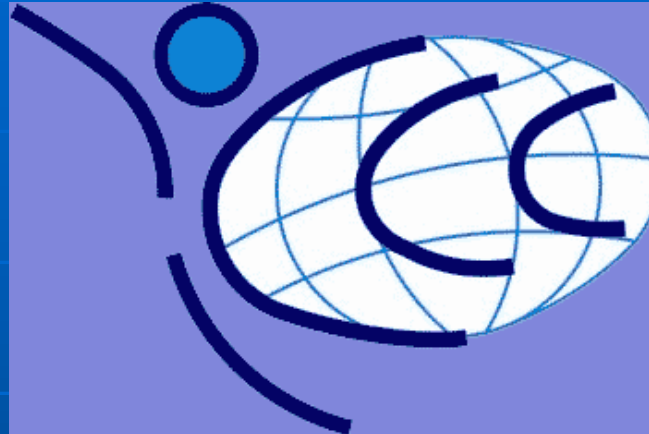




# International Cartographic Association



## Cartography and Children Commission: *Proposals for the next 4 years*

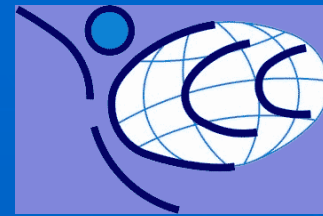
José Jesús Reyes Nuñez  
Eötvös Loránd University  
Dept. of Cartography and Geoinformatics  
Budapest, Hungary



The project is supported by the European Union and co-financed by the European Social Fund  
(grant agreement no. TÁMOP 4.2.1/B-09/1/KMR-2010-0003)

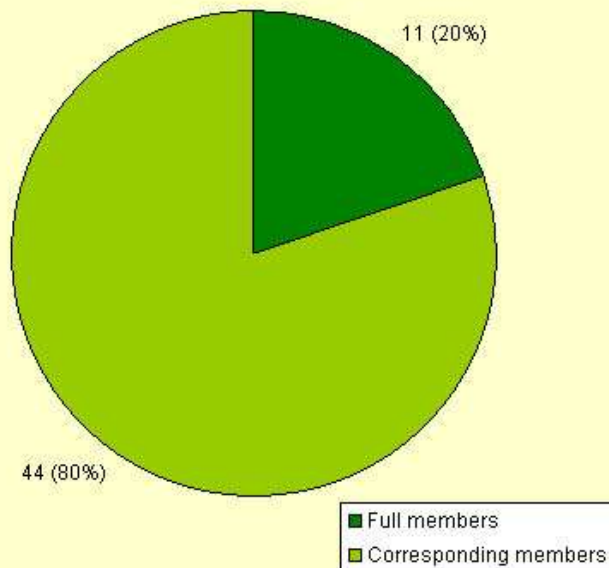


# Cartography and Children Commission

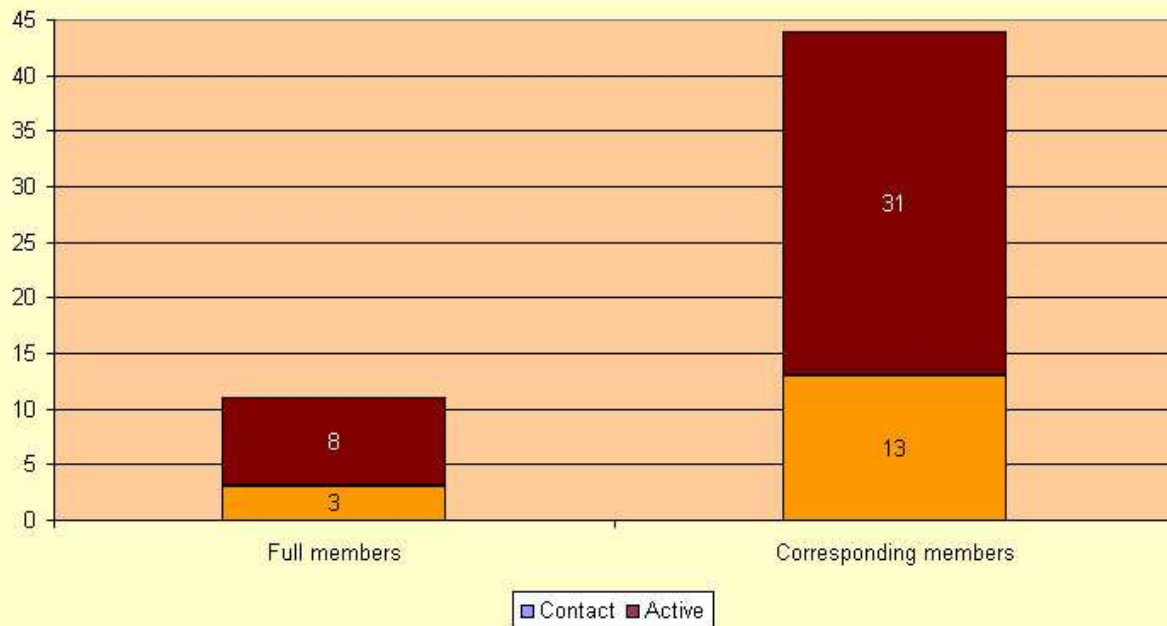


## Membership:

ICA Commission on Cartography and Children  
(Membership in 2010)



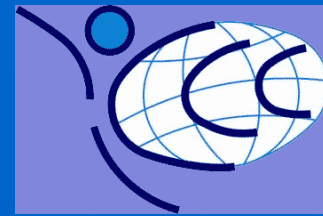
CCC: Number of active and contact members



From 25 countries: Brazil (7), Argentina (5), Greece (5), Spain (4)  
Email list: 169 (ICA CE, CC, members and interested colleagues)



# Cartography and Children Commission



The commission aims, internationally, to:

- promote the use and enjoyment of maps by children and young people;
- increase understanding of children and young people's engagement with maps;
- raise the standard of maps and atlases produced for children and young people.

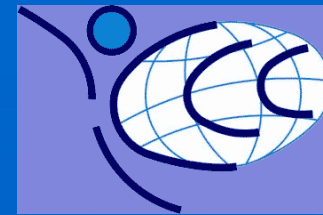
In 2011-2015 it will further these aims by:

- disseminating the outcomes of research into map use by children and young people.  
*Deliverable:* an enhanced set of online bibliography and web links on cartography and children
- developing stronger links between the ICA and relevant international and regional organizations related to Cartography and Children. *Deliverable:* following the contacts with the Commission for Geography Education of the International Geographical Union and other international/regional organizations.
- stimulating a debate on the different aspects of cartography for children in interest of collecting and publishing (in digital or/and printed format) the research results. *Deliverable:* representing the commission in events and publications related to this theme
- following the promotion of the use of digital cartography, web cartography and GIS in schools.  
*Deliverable:* representing the commission in events and publications related to this theme.
- providing consultative support to the ICA Executive in relation to the rules and judging of the Barbara Petchenik Children's World Map Competition. *Deliverable:* appropriate support as required





# Cartography and Children Commission



## ■ Terms of Reference 2011-2015

In 2011-2015 it will further these aims by:

- disseminating the outcomes of research into map use by children and young people.  
Deliverable: *an enhanced set of online bibliography and web links on cartography and children*

The screenshot shows the website for the Commission on Cartography and Children. The page is titled "Bibliographies in different languages" and lists various research papers and books. The website has a blue header with the Commission's name and logo, and a sidebar with navigation links like "Newsletters", "Members", "Meetings", "Proceedings", "Terms", "History", "Bibliography", and "Links".

**COMMISSION ON CARTOGRAPHY AND CHILDREN**

**Bibliographies in different languages**

- [Bibliography in English](#)
- [Bibliography in Spanish](#)
- [Bibliography in Portuguese](#)
- [Bibliography in Hungarian](#)

**Barbara Petchenik Competition**

**Newsletters**

**Members**

**Meetings**

**Proceedings**

**Terms**

**History**

**Bibliography**

**Links**

**NEW ICA ACI**

**Barbara Petchenik Competition**

**COMMISSION ON CARTOGRAPHY AND CHILDREN**

**NEW ICA ACI**

**Callag, S. (1990)** Resourcing mapwork, *Primary Geographer*, 5, 14.

**Callag, S. (1995)** Mapping the environment with children, in De Villiers, M. (Ed.) *Developments in Primary Geography: Theory and Practice*, Sheffield: Geographical Association, pp. 11-17.

**Callag, S. (1995)** Going for the globe: introducing the world to 4-7 year olds, *Primary Geographer*, 23, pp. 4-6.

**Callag, S. (1996)** Beginning to map the world, *Primary Geographer*, 24, pp. 13-15.

**Callag, S. (1996)** Technical interest in curriculum development: a programme of map skills, in Williams M. (Ed.) *Understanding Geographical and Environmental Education: The Role of Research* London: Cassell, pp. 83-111.

**Cornell, E.H. and Hay, D.H. (1984)** Children's acquisition of a route via different media, *Environment and Behaviour*, 16, pp. 627-41.

**Cross, J.A. (1987)** Factors associated with students' place location knowledge, *Journal of Geography*, 88(2), pp. 59-63.

**Dale, P.E. (1971)** Children's reactions to maps and aerial photographs, *Area*, 3(3), pp.170-177.

**Dalke, D.E. (1990)** Charting the development of representational skills: When do children know that maps can lead and mislead? *Cognitive Development*, 13(1), pp.53-72.

**Davis, D.W. (1990)** Big maps - little people, *Journal of Geography*, 89(2), pp. 58-62.

**Davis, L.S. (1981)** Problems in the identification of some topographic map symbols by uninitiated children: a preliminary investigation from Zimbabwe. In, P Wilson, R. Garber and J. Fien (Eds.) *Research in Geographical Education*. Brisbane: Australian Geographical Education Research Association.

**Diana, E.M. and Webb, J.M. (1997)** Using geographic maps in classrooms: The conjoint influence of individual differences and dual coding on learning facts, *Learning and Individual Differences*, 9(3), pp.195- 214.

**Devereux, R. (1982)**, *Environmental Knowledge and Map Learning in Boys aged 11 to 16*, Unpublished M.A. dissertation, University of London Institute of Education.

**Downs, R. M. and Liben, L.S. (1988)**, Through a map darkly: understanding maps as representations, *Genetic Epistemologie*, 16, pp. 11-18.

**Downs, R.M., Liben, L.S. and Daggis, D.G. (1988)** On education and geographers: the role of cognitive development theory in geographic education, *Annals of the Association of American Geographers*, 78, 880-700.

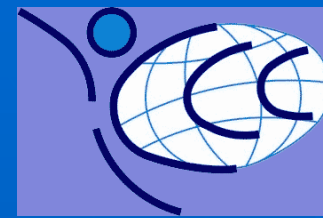
**Evans, L. (1991)** Finding your way, *Special Children*, January (Special supplement), pp.7-9.

**Fitzsimons, D. (1989)** Creating effective type for the classroom, *Journal of Geography*, 88(2), pp.42-45.

**Foley, M. and Jankoun, J. (1996)** Mapwork, in Foley, M. and Jankoun, J. (1996) *The Really Practical Guide to Primary Geography*, London: Stanley Thomas, pp. 75-99.



# Cartography and Children Commission



■ developing stronger links between the ICA and relevant international and regional organizations related to Cartography and Children. Deliverable: *following the contacts with the Commission for Geography Education of the International Geographical Union and other international/regional organizations.*



**HERODOT**  
Network for Geography in higher education

HERODOT Conference, 4-7 September 2008: Future Prospects in Geography. Flinders University, HIF

IGU  
UGI  
International Geographical Union  
Union Géographique Internationale

**Commission on Geographical Education**

Home About IGU-CGE Publications Projects Conferences Charters

**IGU CGE**

Welcome to the website of the Commission on Geographical Education (CGE) of the International Geographical Union (IGU)!

The purpose of the Commission is to promote geographical and environmental education globally. In order to accomplish this goal, the activities of the Commission include:

- publication of a journal, *International Research in Geographical and Environmental Education*, newsletters, and conference proceedings;
- organization of international conferences;
- coordination of international and regional research projects; and
- co-sponsorship of the Geography Olympiad.

Members of the Commission include Professor Lex Chalmers, Commission Chair. Please follow the links to explore this site and the workings of the Commission on Geographical Education.

**News**

**Newsletter #8, August 2011**

IGU Regional Conference, Santiago, Chile, November 2011

IGU Congress and Pre-Congress Commission on Geographical Education Symposium, August 2012

2012 International Geography Olympiad

Conference Proceedings of the Lucerne Conference in 2007 now available online (pdf)

International Charter on Geographical Education now available online in 22 languages (pdf)

MORE NEWSLETTERS

WIKI Geographical Education

The Commission endorses the IGU Initiative on Cultures and Civilizations for Human Development. See [www.homeofgeography.org](http://www.homeofgeography.org) or email [m.robertson@latrobe.edu.au](mailto:m.robertson@latrobe.edu.au) to learn more about this project.



**9<sup>TH</sup> INTERNATIONAL GEOGRAPHY OLYMPIAD (IGEO)**

**INVITATION**

Dear Colleagues,

On behalf of the Geographical Society of Germany (Deutsche Gesellschaft für Geographie – DGFG) and the Institute for Geography of the University of Cologne, it is our pleasure to invite your country to send a team to the 9th International Geography Olympiad (iGeo). This will be held in Cologne, Germany, from 21 August to 26 August 2012, under the auspices of the International Geographical Union Olympiad Task Force. The venue will be the Institute for Geography in the heart of the city of Cologne beside the Rhine River.

As always the iGeo competition contains three elements: a written response test, a multimedia test and a fieldwork test. The official language of the iGeo is English. Questions will be presented in English and students must answer in English. Extra facilities will be provided for non-native English speakers. A country's team will be made up of four secondary school students between 16 and 19 years of age (inclusive) on 30 June 2012. Students must be selected through a national geography competition. Please return your application by **21 January 2012** at the latest. For further information on the iGeo, tests, guidelines, costs and the application form see [www.geolympiad.org](http://www.geolympiad.org).

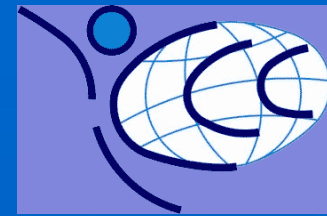
**Dr Dorothea Wiktorin**  
iGeo 2012 Organising Committee,  
[d.wiktorin@uni-koeln.de](mailto:d.wiktorin@uni-koeln.de)

**Ms Kathryn Berg**  
Secretariat, International Geographical Union  
Olympiad Task Force,  
[admin@igso.org.au](mailto:admin@igso.org.au)

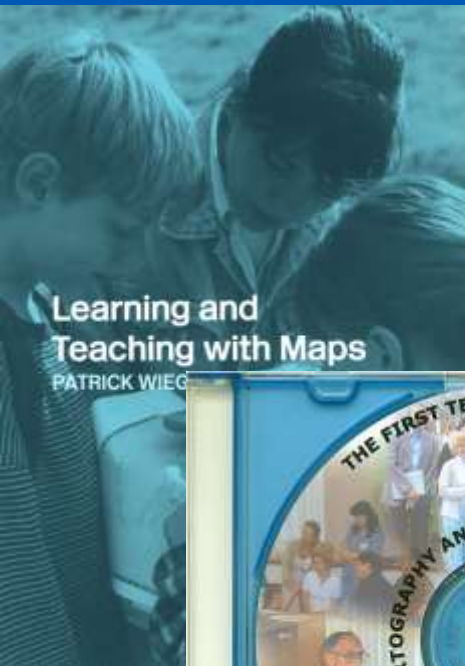




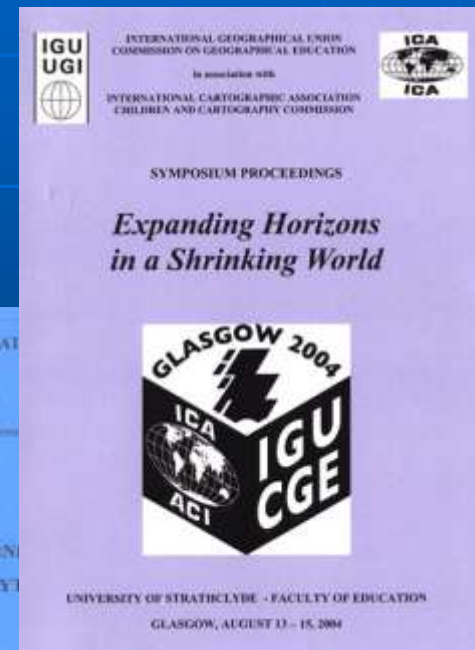
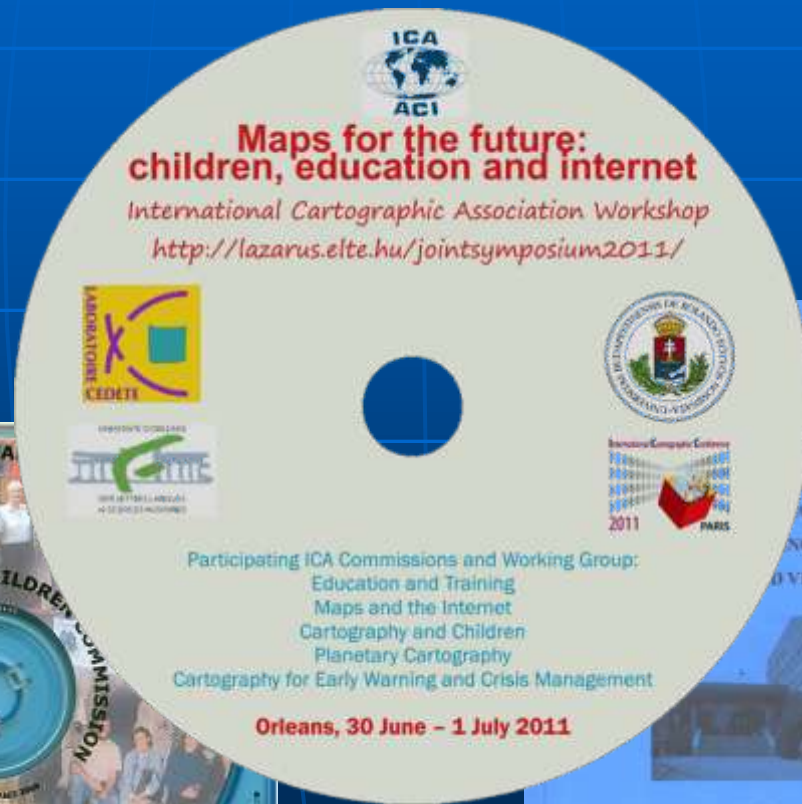
# Cartography and Children Commission



- stimulating a debate on the different aspects of cartography for children in interest of collecting and publishing (in digital or/and printed format) the research results.  
Deliverable: *representing the commission in events and publications related to this theme*

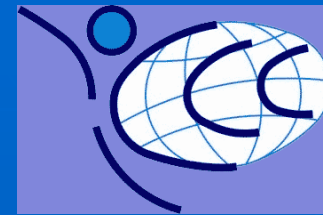


Learning and Teaching with Maps  
PATRICK WIEG





# Cartography and Children Commission



- following the promotion of the use of digital cartography, web cartography and GIS in schools. Deliverable: *representing the commission in events and publications related to this theme.*

FAQs | Newsletter | Contact Us | Site Map

**GIS Day** Discovering the World Through GIS **November 16, 2011**

Home | Events | Resources & Support | Participant Showcase | About GIS Day

**Celebrate GIS Day!**

**The Countdown Has Begun: Only 39 Days Away**

**Plan for GIS Day 2011**

**Free Materials Available**  
The new GIS Day 2011 flier is now available to help you promote your upcoming event. Find it and many other [free materials](#) to help you in planning, promoting, and hosting your event.

**GIS Day Video**  
This video spotlights GIS Day organizers and attendees as they tell their GIS Day stories, share benefits of hosting an event, and provide recommendations to future participants. [Watch](#) | [Download](#).

**Bronze Pins Available**  
GIS Explorer and GIS Innovator bronze pins are available in the [GIS Day Gear store](#) to promote the importance of geography to GIS Day participants. Many other materials for your events are available on the [Materials page](#).



GIS Day 2011

Dia 16 de novembro de 2011

**Local: Universidade do Estado do Rio de Janeiro-UERJ  
Campus Maracanã  
Rua São Francisco Xavier, 524  
Pavilhão João Lyra Filho, 9º andar, Bloco F, Auditório 93  
Horário: 08:00h às 18:00h  
Contato: gisdaynov2011@gmail.com**

Realização:



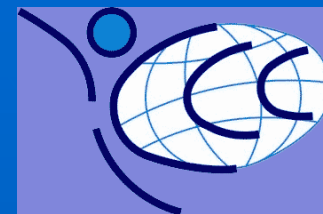
Apoio:







# Cartography and Children Commission



TÉRINFORMATIKAI VILÁGNAP AZ ELTE TÉRKÉPTUDOMÁNYI  
ÉS GEOINFORMATIKAI TANSZÉKEN  
2010. november. 17.



10gisday005.jpg



10gisday006.jpg



10gisday010.jpg



10gisday011.jpg



10gisday012.jpg



10gisday013.jpg



10gisday014.jpg



10gisday016.jpg



10gisday017.jpg



10gisday018.jpg



10gisday001.jpg



10gisday002.jpg



10gisday004.jpg



10gisday019.jpg



10gisday022.jpg



10gisday023.jpg



10gisday024.jpg



10gisday027.jpg



10gisday028.jpg



10gisday030.jpg



10gisday032.jpg



10gisday033.jpg

GIS Day at  
the Eötvös Loránd  
University  
(Department of  
Cartography and  
Geoinformatics)  
17 November, 2010



zeti Fejlesztési Ügynökség  
www.ujszechenyiterv.gov.hu  
06 40 638 638

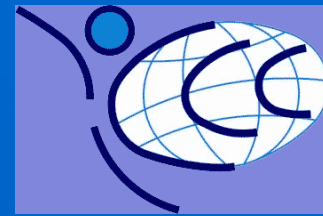


A projekt az Európai Unió támogatásával, az Európai Szociális Alap társfinanszírozásával valósul meg.





# Cartography and Children Commission



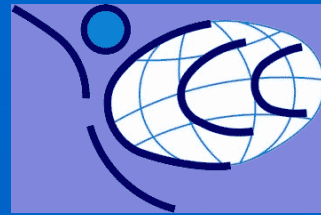
- providing consultative support to the ICA Executive in relation to the rules and judging of the Barbara Petchenik Children's World Map Competition. Deliverable: *appropriate support as required*



Barbara Petchenik Exhibition (Paris, 2011)



## Activities planned for the next years



- Divulcation of Commission activities and research in continents with less participation and results on Cartography and Children

Priorities: **Asia** (Indonesia, Japan, China /Hong Kong/, Israel)

**America** is an „special” case – four countries are „traditionally” active (Brazil, Argentina, USA, Canada), but we need to make known the Commission activities in other countries (2009 – Chile, 2011 – Uruguay)

**Africa** (South Africa) – more complicated...

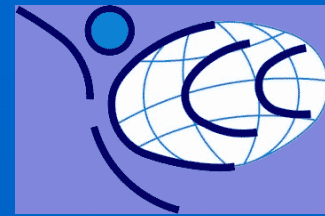
It is only possible with the cooperation of the Commission members – the participation in regional events related to Geography, Cartography, etc. can be a good opportunity to publicize the activities of the Commission.

The official representation of our Commission in any scientific event is considered a right of each member - the Commission has materials (lectures, posters, etc.) that can be delivered to any member who requests it, being named as the official representative of our Commission in the event.





## Activities planned for the next years



- Closer ties with the ICA Commissions that have themes related to Cartography and Children:

- Common projects
- To follow the organization of joint events that makes possible the personal exchange of experiences between members of ICA Commissions (Education, Internet, Atlas, Early Warning, Planetary Cartography etc.)

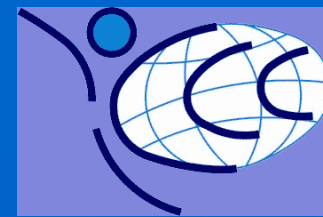


Need to deepen our relations with the Commission on Maps and Graphics for Blind and Partially Sighted People

Other Commissions: Maps and Society, Art and Cartography, Cognitive Visualization, etc



# Activities planned for the next years



- Commission members' active collaboration in printed or digital publications about research related to our theme (joint research projects, papers presented in events, etc)

Lecture Notes  
in Geoinformation and Cartography  
Subseries: Publications of the  
International Cartographic Association (ICA)

László Zentai  
Jesús Reyes Nunez  
*Editors*

A screenshot of the Springer website showing the product page for the book 'Maps for the Future'. The page includes the Springer logo, navigation links, a search bar, and a detailed description of the book. The book is part of the 'Lecture Notes in Geoinformation and Cartography' series, edited by László Zentai and Jesús Reyes Nunez. It is a hardcover book with 150 pages, published in 2012. The price is listed as 99.95 €. The page also features a 'Reserve an Online Book Review Copy' button, a 'NEW BOOK ALERT' sign-up form, and a list of related books, including 'GIS in Geowissenschaften und Umwelt' edited by Ach, Kristine. The bottom of the page has navigation buttons for 'BACK' and 'NEXT'.

## Maps for the Future

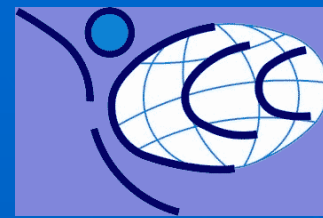
Children, Education and Internet







## Activities planned for the next years



- Commission members' active collaboration in printed or digital publications about research related to our theme (joint research projects, papers presented in events, etc)  
In 2012: contacts with ESRI to publish next volume of the serie „Children Map the World”

### Children Map the World

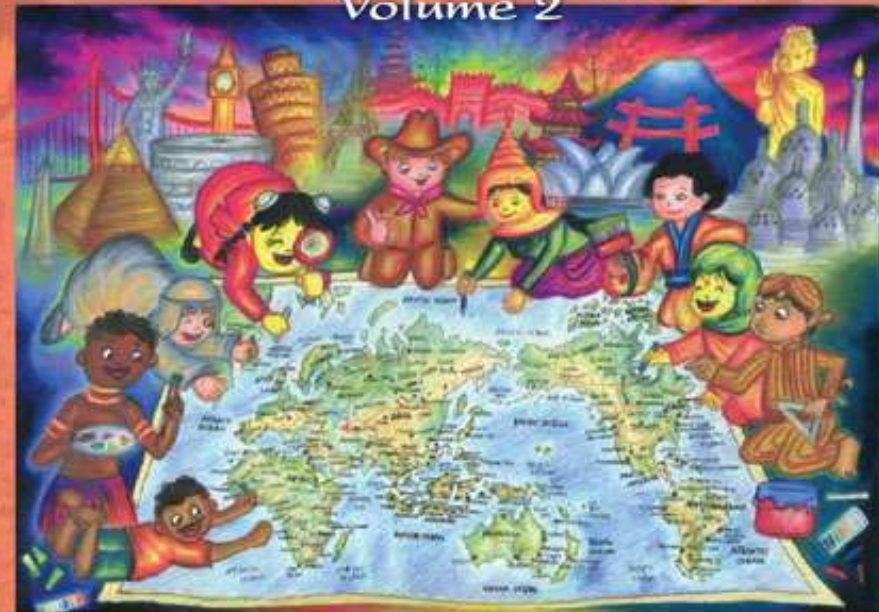
Selections from the Barbara Petchenik  
Children's World Map Competition



Jacqueline M. Anderson, Jeet Atwal, Patrick Wiegand, and Alberta Aurlinger Wood, editors

### Children Map the World

Selections from the Barbara Petchenik  
Children's World Map Competition  
Volume 2

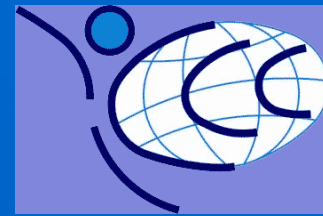


Tamanoujka Bandrova, Jesus Reyes Nunez, Milan Konecny, and Jeet Atwal, editors





# Activities planned for the next years



## Barbara Petchenik Competition

New four years period (2011-2015):

- New theme for the contest, which will be valid for the 2013 and 2015 awards
- Some changes in the rules of competition (mainly related to the work of the Jury)

At present are being collected the Commission members' opinions, proposals, etc!

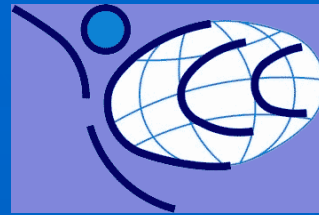


Members of Jury working in Paris...





## Activities planned for the next years



### Improving international research projects

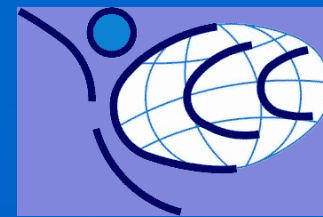
- Between Commission members...
- Between Commission members and colleagues from other Commissions: Education and Training, Maps and the Internet, Atlases, Cognitive Visualization, Art and Cartography, Maps and Society, etc

Financial support for research – mainly obtained by research teams in their respective countries (scientific organizations, foundations, EU funds, etc)

Commission meetings and other international events are a good opportunity to know which are the research themes „running” and planned all over the world...



# Activities planned for the next years



## Examples of Hungarian research projects related to our field

**Virtuális Glóbuszok Múzeuma**

Múzeum | Információ | Mars gömbök | Térképtudományi Tanszék | Országos Széchényi Könyvtár | Publikációk, linkek

Keresendő részlet:  Ebben a mezőben:  Átmérő [cm]  Keres:

1987	politikai földgömb	25 cm lengyel	komplex földgömb	25 cm angol	domborzati földgömb	40 cm angol szerkezeti földgömb felső rész	40 cm angol szerkezeti földgömb alsó rész	40 cm angol szerkezeti földgömb	25 cm magyar komplex földgömb	25 cm magyar politikai földgömb	0 cm virtuális földgömb	0 cm virtuális földgömb	25 cm latin albedo marsgömb
1987	Vállalat...	Kartográfiai Vállalat...	Kartográfiai Vállalat...	Kartográfiai Vállalat...	Kartográfiai Vállalat...	Kartográfiai Vállalat...	Kartográfiai Vállalat...	Kartográfiai Vállalat...	Cartographia, Belma K...	Cartographia, Belma K...	Ptolemaiosz	Sztrabón	Hargitai Henrik

99 találat.

Részletes adatlap

## Virtual Globes Museum:

- 3D reproduction of spheres (Earth, planets, sky)
- Virtual restoration
- At present 99 globes

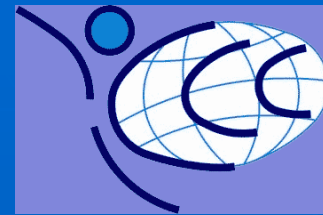
*Mátyás Gede, Mátyás Márton, etc.*  
 Dept. Of Cartography and Geoinformatics, ELTE







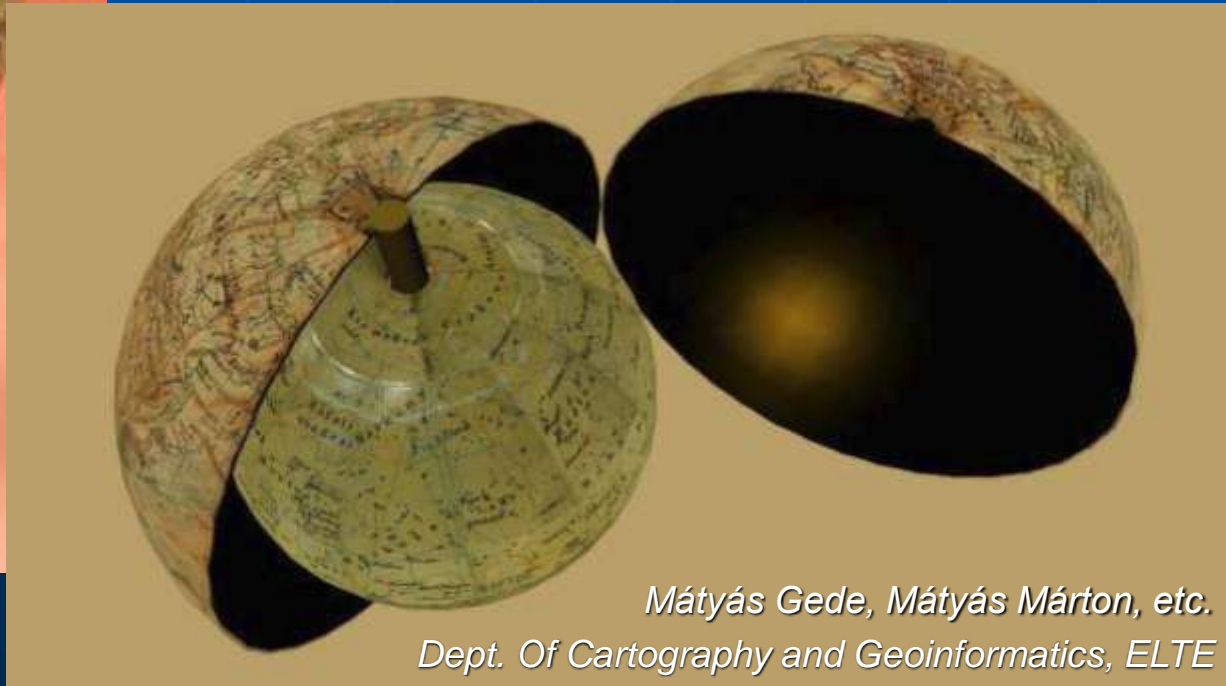
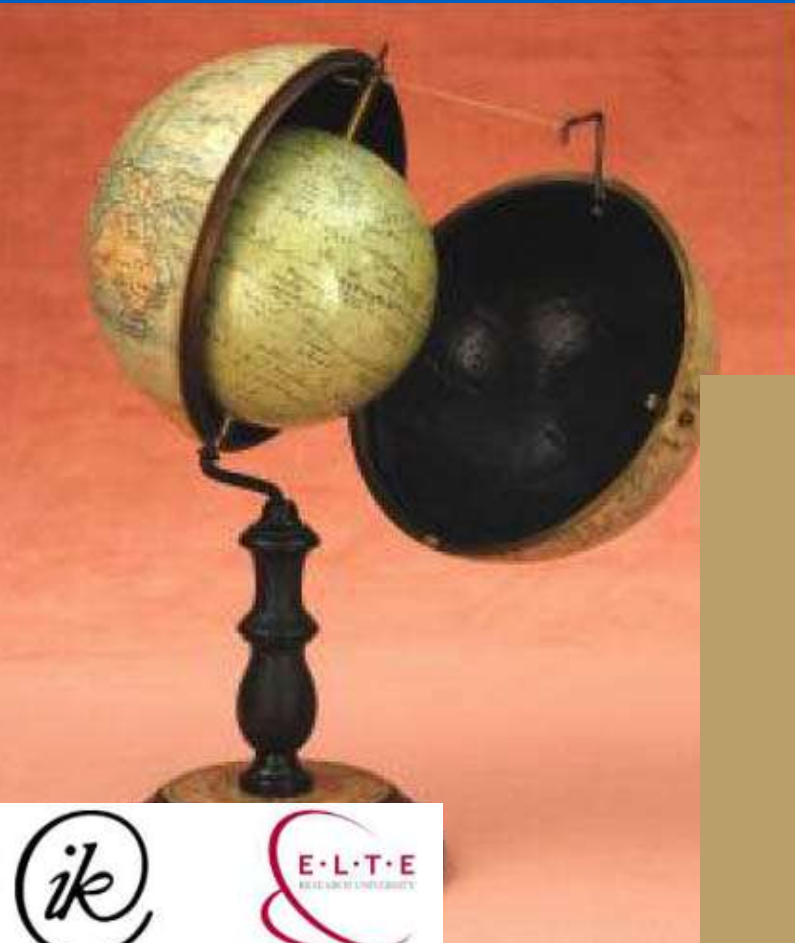
# Activities planned for the next years



Examples of Hungarian research projects related to our field

Virtual Globes Museum:

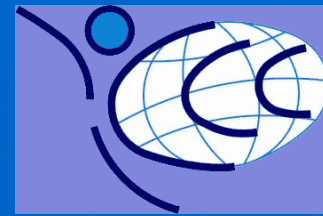
- 3D reproduction of spheres (Earth, planets, sky)
- Virtual restoration
- At present 99 globes



*Mátyás Gede, Mátyás Márton, etc.  
Dept. Of Cartography and Geoinformatics, ELTE*



# Activities planned for the next years



Examples of Hungarian research projects related to our field

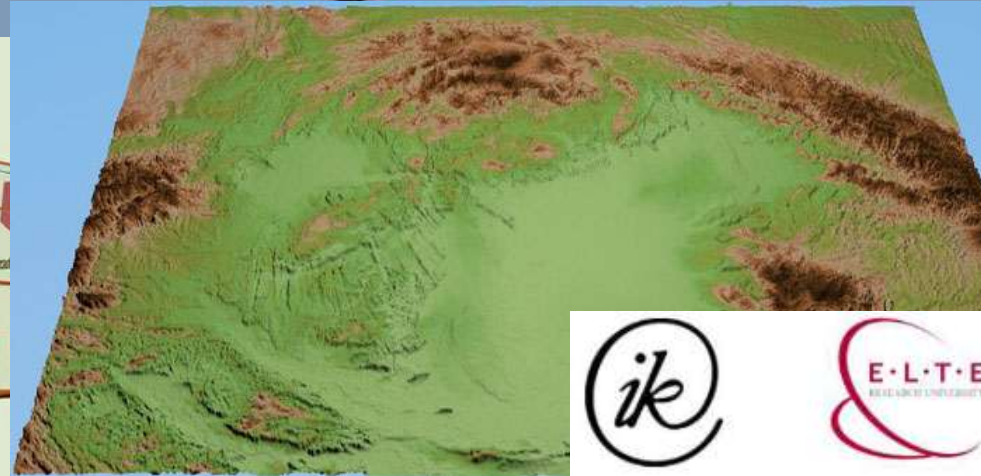
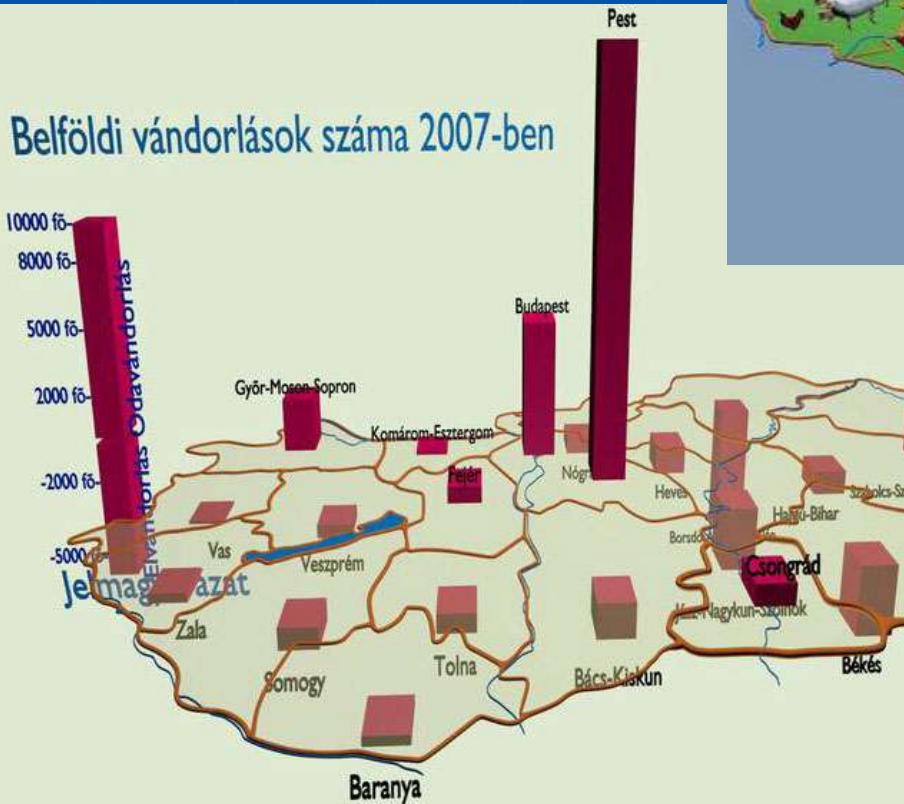
3D Cartography: Adopting traditional methods of thematic representation to 3D

Testing 3D freeware (Blender)

*Katalin Zsoldi, PhD student*



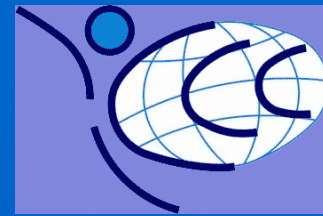
Belföldi vándorlások száma 2007-ben





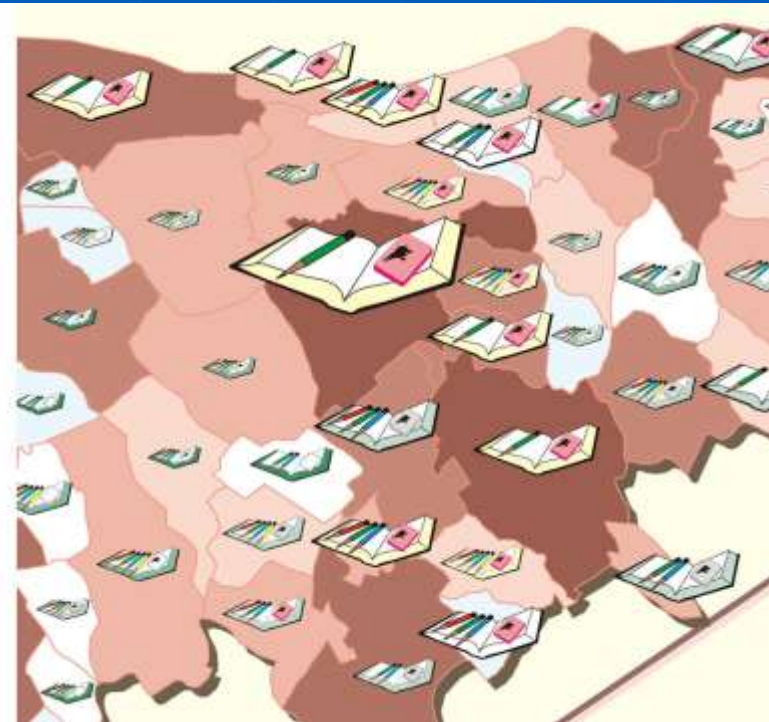


# Activities planned for the next years



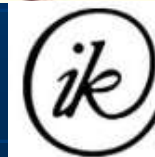
Examples of Hungarian research projects related to our field

Geovisualization and Thematic Cartography... Its' role in the Primary and Secondary Education



Testing the possibilities of using alternative methods of representation in School Cartography, testing maps in Elementary Schools

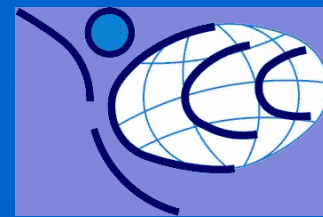
*José Jesús Reyes Nunez, Dept. Of Cartography and Geoinformatics, ELTE*



HUNGARY RENEWS



# Activities planned for the next years



## Examples of Hungarian research projects related to our field

**A TÉRKÉPEKRŐL...** Újdonságok

**Előzmények**

**"A Földtől a számítógépes térképekig"** című multimédiás bemutató összefoglalója.

**Amit tanultok és annál többet...**

Mindent, amit a térképekről az iskolában tanultál, plusz még azt is, amit mindig tudni akartál róluk, de nem tanították...

**Mit hol találsz? (Links)**

Világszerte található, a térképekkel és a gyerekekkel valamilyen módon kapcsolatban álló honlapok címeit találhatod itt. Látogasd meg őket!

**EGY KIS SEGÍTSÉG...**

*Első látogatásodkor olvasd el!*

A honlap bármely oldaláról visszateherhetsz erre a főmenüre, ha a felső bal sarokban látható ikonra kattintasz...

A különböző fejezetek címei mellett látható kis képeket mindig a honlap baloldali fogod megtalálni, így bárhol vagy a honlapon belül, beléphetsz a kívánt fejezetbe.

Az alapsmereteket bemutató fejezet ("Amit tanultok és annál többet...") oldalainak a végén fogod megtalálni ezt az ikont:

Következő téma

Előző oldal

Következő oldal

Kezdőoldal

Segítségével ezen a fejezeten

**ELTE** TÉRKÉPTUDOMÁNYI ÉS GEOINFORMATIKAI TANÁRSZÉK

**TÉRKÉPI ISMERETTERJESZTÉS**

Főoldal ALAPISMERETEK DIGITÁLIS GYŰJTEMÉNYEK JÁTÉKOK HIVATKOZÁSOK RENDEZVÉNYEK HÍREK

**Köszöntjük honlapunkon!**

**Kedves Érdeklődő!**

On jelenleg az ELTE Térképtudományi és Geoinformatikai Tanárszékének kisiskolások és érdeklődők számára létrehozott ismeretterjesztő weboldalát látogatta meg. Reméljük hasznosítható információkkal gazdagodik!

Kellemes időtöltést kívánunk!

**Hírek**

**2. Egy birodalom romjai: az elpusztított budapesti föld feletti és föld alatti katonai-diplomáciai negyed**  
2011. 03. 09.

**1. A Sándor-palota: az Ördöglovas és a Hírszterelnök**  
2011. 03. 09.

**Keresés**

Keresés a portál | 4. keresés

**TÁJOP**

A projekt az Európai Unió támogatásával és az Európai Szociális Alap társfinanszírozásával valósul meg, a támogatási szerződés száma TÁJOP-4.2.1./0-09/1/KMR-2010-0003.

Popularization of Cartography: Renewing a website created in 2001 using new tools (Plone, CMS)

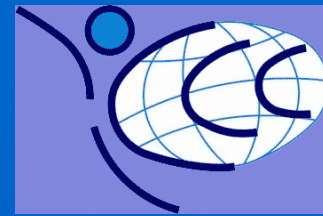
José Jesús Reyes Nunez, Szabó Csaba, Dept. Of Cartography and Geoinformatics, ELTE







# International Cartographic Association



COMMISSION ON  
CARTOGRAPHY AND CHILDREN

NEW ICA ACI

Barbara Petchenik Competition

WELCOME TO THE WEBSITE  
OF THE  
ICA COMMISSION ON CARTOGRAPHY AND CHILDREN

BARBARA PETCHENIK COMPETITION 2011  
Results of Barbara Petchenik Competition 2011

# THANK YOU

If you want to become a member of our commission, please [click here](#)  
To send any comment related to the CCC site please [click here](#)

© from 2011: Jesús Reyes Nuñez  
© 2007-2011: Temenoujka Bandrova & Jesús Reyes Nuñez  
© 2004-2007: Patrick Wiegand & Jesús Reyes Nuñez  
© 2000-2004: Jacqueline Anderson & Derek A. Parent

<http://lazarus.elte.hu/ccc/ccc.htm>



The project is supported by the European Union and co-financed by the European Social Fund (grant agreement no. TÁMOP 4.2.1/B-09/1/KMR-2010-0003)