

# MEN A (2)

# Schmidwald-Horben

1 : 15'000 | 5m | 2022

Base material: Swisstopo  
 Map maker: Ernst Kläy, Burgdorf  
 Print: frey print&design, Birr  
 Coordinates: CH1903+ / LV95: 2'631'000 / 1'223'000  
 Copyright: WUC Orienteering 2022 / OLG Huttwil

18.08.2022

# Long

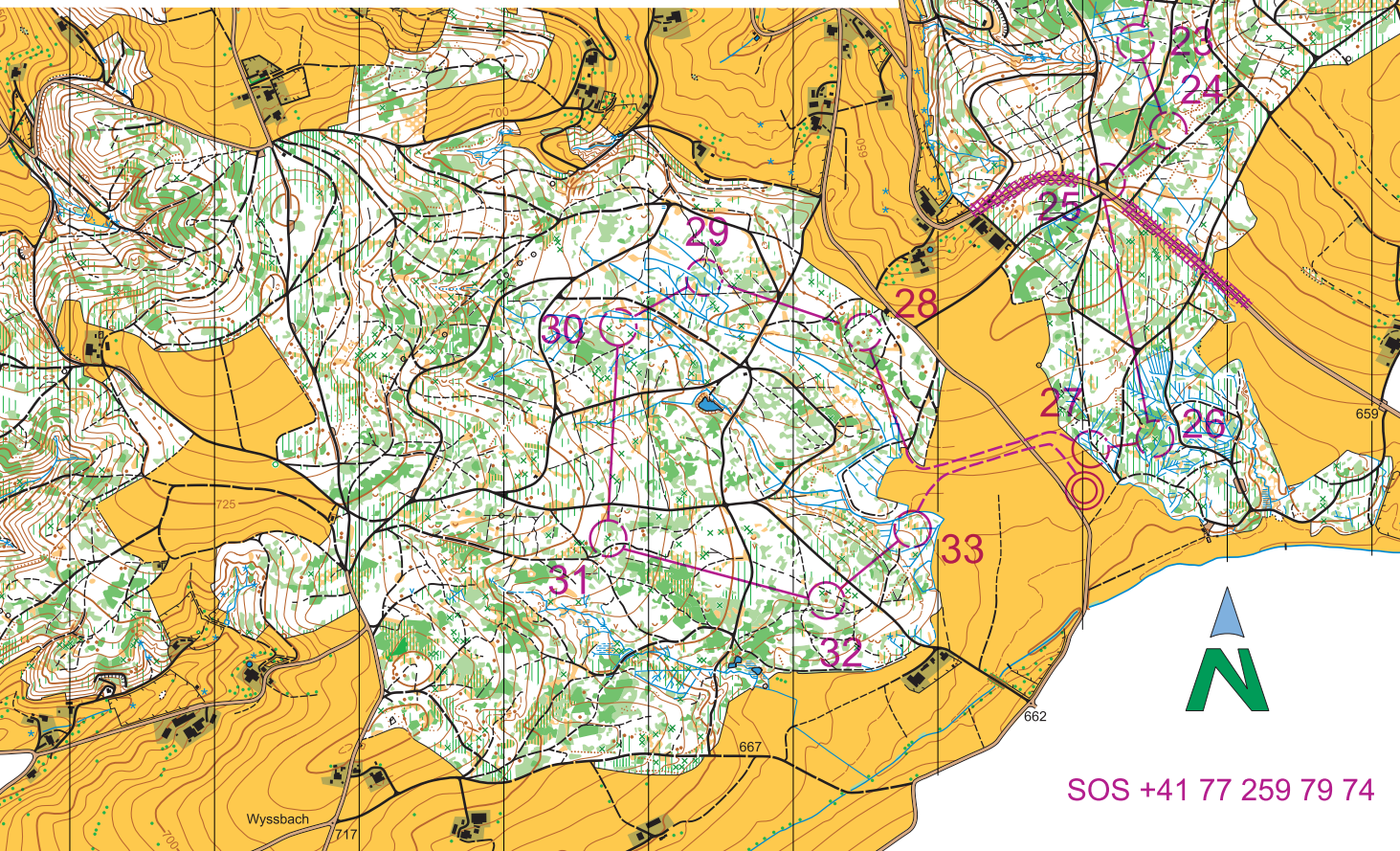
Course setters:  
 Reto Flückiger, Beat Zimmermann



FISU  
 WORLD  
 UNIVERSITY  
 CHAMPIONSHIP  
 ORIENTEERING



WUC 2022 - Long					
MEN A		14.0 km		470 m	
▶		⊙		⊙	
15	44		⊗	1.3	⊙
16	45	←	↘		✓
17	43		⊗		↖
18	35	●		1.0	⊙
19	39	↗	⊗	1.8	⊙
20	40	⊗			↘
21	49	∩			
22	52	→	∩		↓
23	53		⊗		↘
24	55		∩		⊙
25	203	↘	↘		↘
26	59	⊗		1.5	⊙
27	204	↘	⊗		↘
		○ — 420 m — →			
28	61	←	●	1.0	⊙
29	62		⊗		⊙
30	63	↘	∩		⊙
31	65	⊗		1.5	⊙
32	70	↓	●	1.0	⊙
33	205		⊗		⊙
		○ — 480 m — →			



SOS +41 77 259 79 74