



# TENTSMUIR NW

## Dragon's Teeth

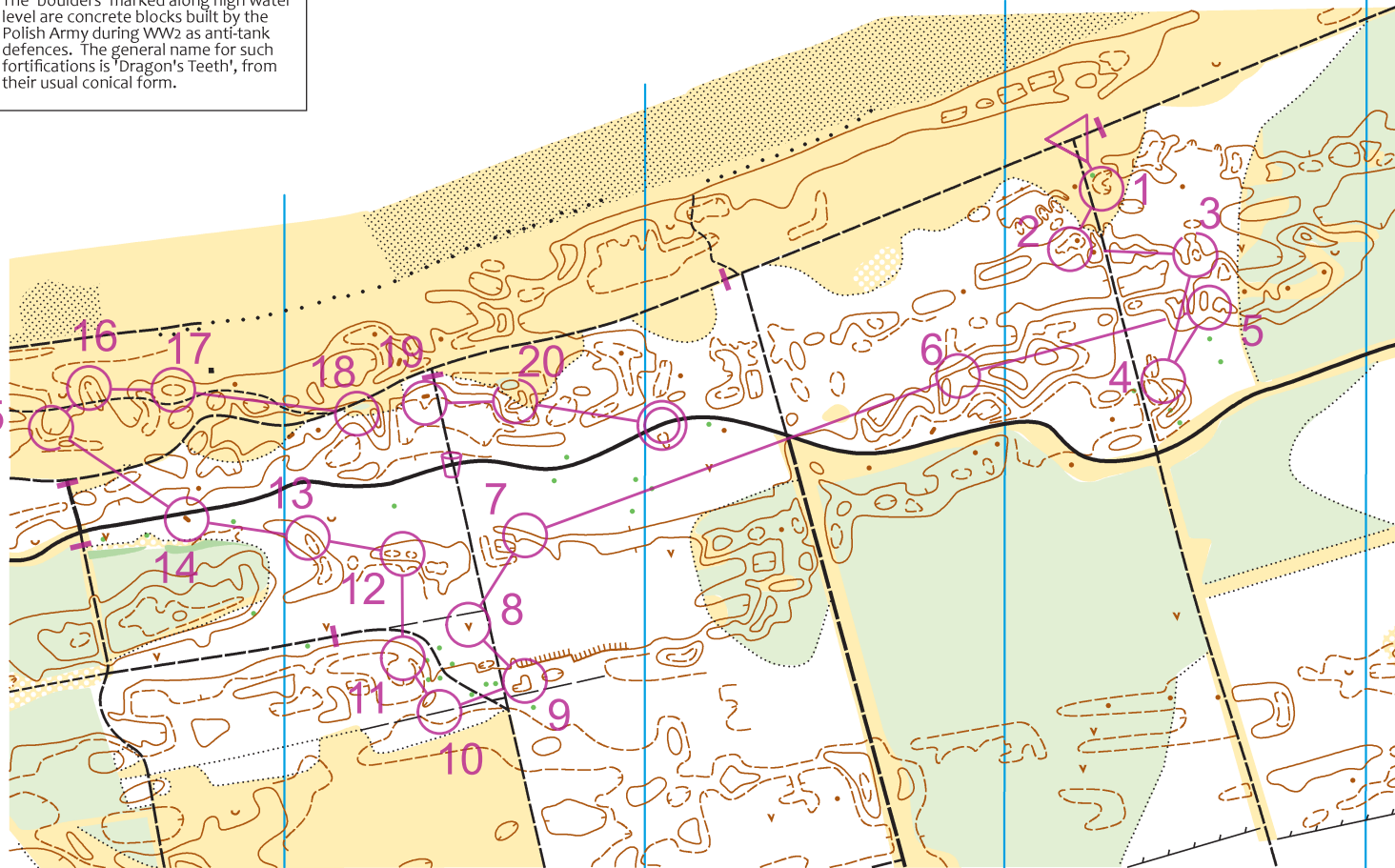
Scale 1:5000  
Contour interval 2.5m



WTOC 2012 is staged in Scotland by British Orienteering on behalf of the International Orienteering Federation.

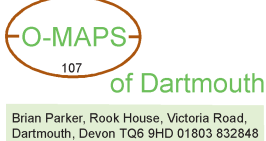


The 'boulders' marked along high water level are concrete blocks built by the Polish Army during WW2 as anti-tank defences. The general name for such fortifications is 'Dragon's Teeth', from their usual conical form.

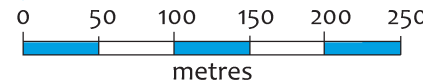


Maximum time 132 min

	Day1	2.3 km	10m
▷			
1	A-C	⊙	⊙
2	A-C	↑	
3	A-E	○	
4	A-D	⋈	⊙
5	A-C	)	↑
6	A-D	○	⋈
7	A-D	⋈	⊙
8	A-B	∨	⊙
9	A-D	⊙	⊙
10	A-C	⋈	←
11	A-B	⋈	⋈
12	A-D	○	⋈
13	A-C	○	⊙
14	A-C	•	
15	A-E	∧	⋈
16	A-E	○	⊙
17	A-E	○	↗
18	A-E	∧	⋈
19	A-C	⋈	←
20	A-E	⋈	→
⊙		190 m	⊙



Base map 2010 by Deeside Orienteering & Leisure Maps.  
Selective corrections 2012 for 5000 scale TrailO by O-Maps of Dartmouth.  
Map copyright 2012 Kingdom of Fife Orienteers.

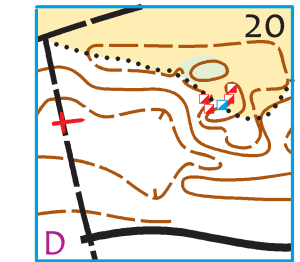
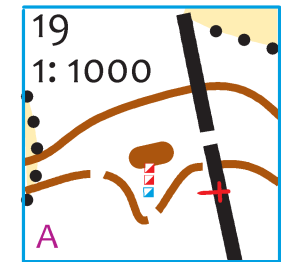
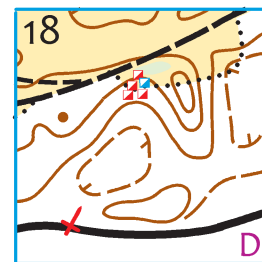
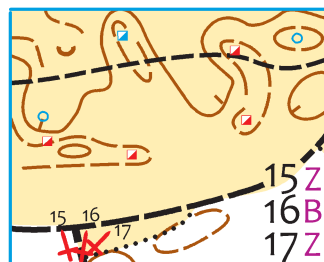
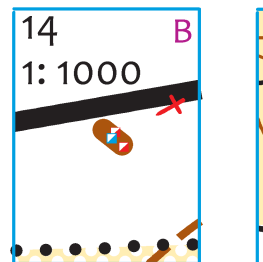
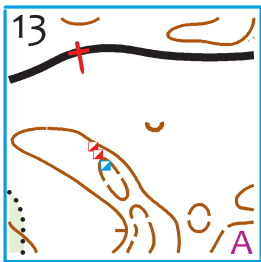
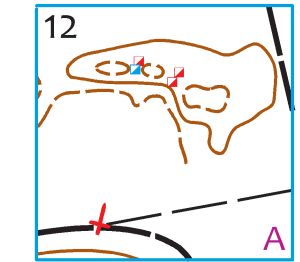
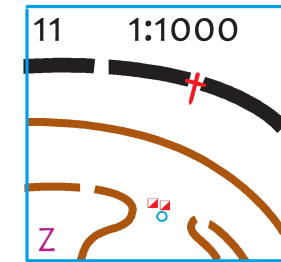
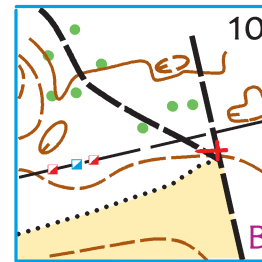
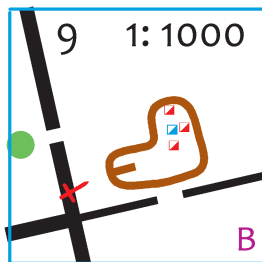
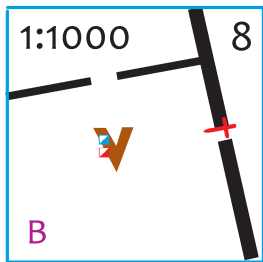
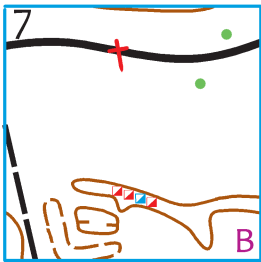
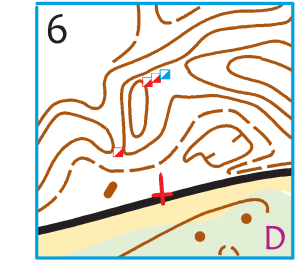
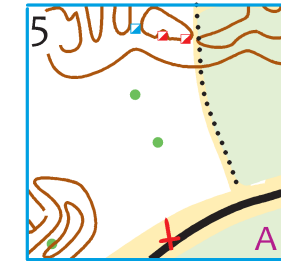
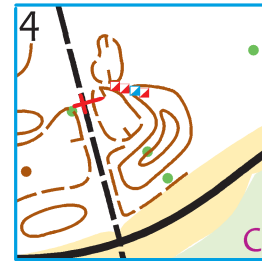
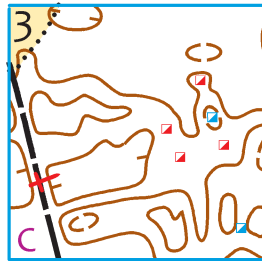
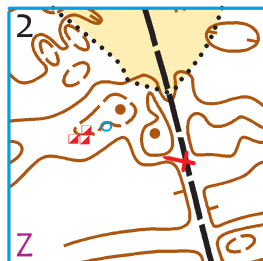
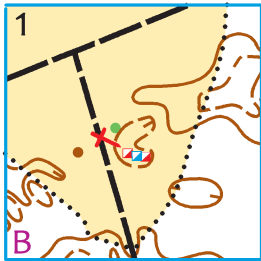
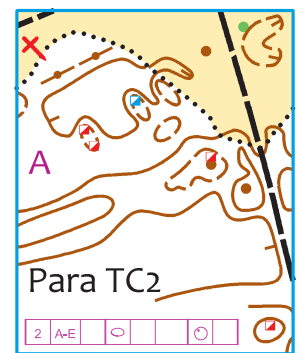
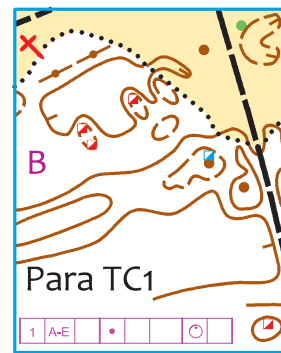
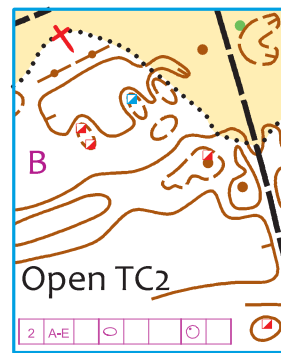
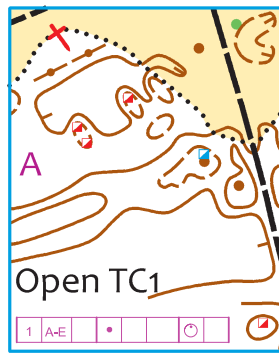




# Day 1 Solutions

1:2500

- + Viewing point
- ▣ Correct flag
- ▣ Other flag
- Zero

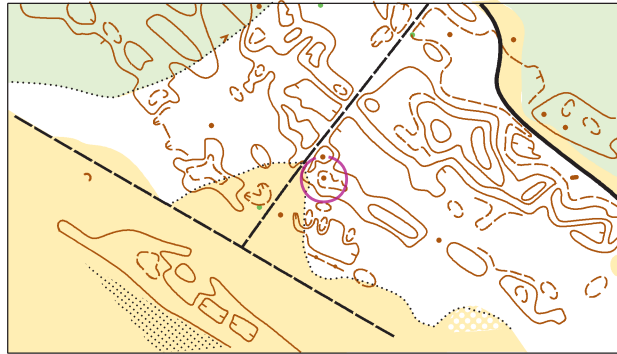




# Open TC 1

1

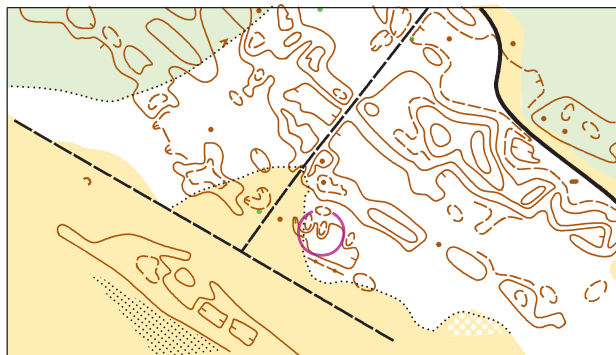
Scale 1 : 5000  
Contours 2.5m



# Open TC 2

2

Scale 1 : 5000  
Contours 2.5m

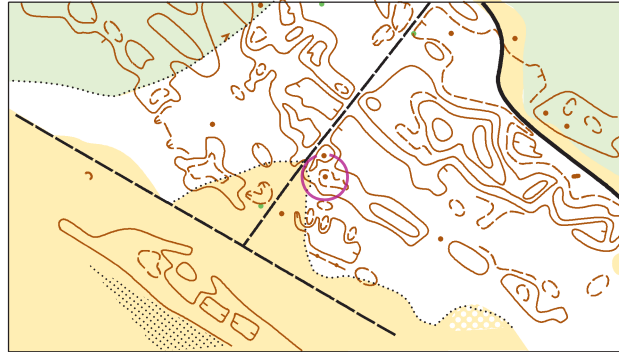




# Para TC 1

# 1

Scale 1 : 5000  
Contours 2.5m



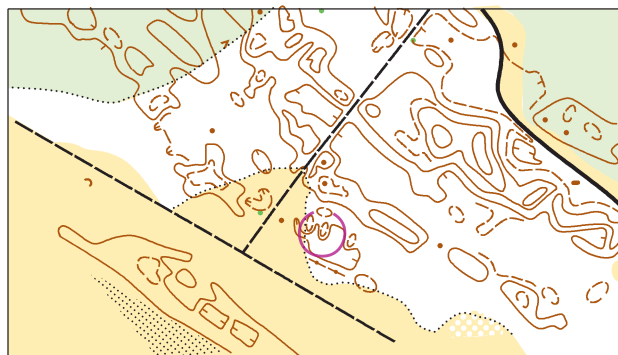
1	A-E	•			○
---	-----	---	--	--	---



# Para TC 2

# 2

Scale 1 : 5000  
Contours 2.5m



2	A-E	○			○
---	-----	---	--	--	---