

Bulletin 4





Table of contents

1. [Welcome](#)
2. [Organizers](#)
3. [Event Center](#)
4. [Programme](#)
5. [Final entries](#)
6. [Important deadlines](#)
7. [Transportation, parking and locations](#)
8. [Payment](#)
9. [Medical care](#)
10. [Media](#)
11. [Ceremonies](#)
12. [Team materials and information](#)
13. [Anti-Doping](#)
14. [Rules and procedures](#)
15. [Taping and marking](#)
16. [Embargoed areas](#)
17. [Model events](#)
18. [Maps and courses](#)
19. [Quarantines](#)
20. [Start procedure](#)
21. [EYOC Tour](#)
22. [Social events](#)

1. Welcome



Greetings from the President of Bulgarian Orienteering Federation

Dear young orienteering friends,
I am over excited to have the honor and the pride to welcome you all in Bulgaria and the old capital Veliko Tarnovo. Our country and the Bulgarian Orienteering Federation have great traditions in our favourite sport orienteering. Together, along with 9 other countries in 1961 we founded the International Orienteering Federation. Until then, we organized really well a few World and European Orienteering championships here in Bulgaria. That is why I strongly believe that our federation, together with the orienteering club in Veliko Tarnovo, can organize very good European Youth Orienteering Championships on very technical and interesting terrains.

I wish to all of you - young competitors, very successful starts.

Good luck!

Prof. Atanas Georgiev

President of Bulgarian Orienteering Federation



Dear Young Athletes and Events Organizers,

It is a great pleasure that Veliko Tarnovo and Bulgaria welcomes all of you to the European Youth Orienteering Championships (EYOC 2018).

I am sure that this medieval town, which was the Capital of The Second Bulgarian Kingdom for 208 years, will be a charming scenario and highly challenging for all of you.

Do not miss the opportunity to visit the Tsarevets and Trapezitsa fortresses, where the great Bulgarian kings from the Asenevci dynasty lived. Veliko Tarnovo.

I wish all the best for all of you, O-friends!

Let the best win!

Daniel PANOV

Mayor of Veliko Tarnovo

ORGANIZERS





SPONSORS



PARTNERS



MEDIA PARTNERS



2. Organizers

	Bulgarian Ministry of Youth and Sports Bulgarian Orienteering Federation Municipality of Veliko Tarnovo Municipality of Elena Municipality of Lyaskovets SCO Trapezitsa 1954 Veliko Tarnovo
Organizing committee	
Event director	Todor Pedev
Technical director	Konstantin Koynov
Secretary General	Grigor Karaivanov
Infrastructure & Logistics	Krasimir Danailov
Mapper	Georgi Kartalov
Course Planners	Ivan Sirakov, Tihomir Kuzmanov, Georgi Kartalov
IOF Senior Event Adviser	Nermin Fenmen (TUR)
National Controller	Vladimir Atanasov (BUL)
IOF Representative	
IOF Council Member	Maria Silvia Viti

3. Event centre

	Hotel Momina Krepost
Address	Mestnost Ksilifor, м. Ксилифор, 5000 Ксилифор, Veliko Tarnovo
GPS coordinates	https://goo.gl/maps/oCNSB5Kn95w
Link to maps	+359 89 675 7049
Phone	www.trapezitca1902.com
Website	
Working hours	
27 June 2018	16:00 – 20:00h
28 June 2018	10:00 – 22:00h
29 June 2018	15:00 – 17:00h, 19:30 – 21:00h
30 June 2018	15:00 – 17:45h
1 July 2018	08:30 – 10:00h – Finish arena Relay



4. Programme

Date & Time	Event	Destination
Thursday, June 28		
until 20:00h	Team arrival	Hotels
10:00h – 22:00h	Accreditation	Event centre
10:00h – 14:00h	Model event without control flags, Only own transportation	Veliko Tarnovo, Ksilifor
14:00h – 18:00h	Model events – with control flags, organizers transportation only Technical model – SI AIR+ Start and Finish demonstration Relay map board sample	Ksilifor
15:00h	Deadline Entry slots – Sprint	via email or hard copy
19:00h	Team leaders meeting, Sprint	Event centre
19:30h- 21:00h	Dinner	Hotels
Friday, June 29		
07:00h – 09:00h	Breakfast	Hotels
	Quarantine Check-in	with entering the bus
08:00h	Buses departure (bus departure lists will be distributed at Team Leaders' Meeting)	from hotels
09:00h	Buses departure (bus departure lists will be distributed at Team Leaders' Meeting)	from hotels
10:00h – 12:15h	Sprint Distance Final	Tsarevets
12:15h – 12:30h	Flower ceremony – Sprint	Finish arena
12:45h	Start EYOC TOUR Sprint	Tsarevets
13:00h – 15:00h	Lunch	Hotels
15:00h	Deadline Entry slots - Long	via email or hard copy
17:30h – 18:30h	Official Opening ceremony	Park Marno pole
18:30h – 19:00h	Prize-giving ceremony	Park Marno pole
19:30h – 20:30h	Team leaders meeting, Long	Event centre
20:00h – 21:30h	Dinner	Hotels
Saturday, June 30		
06:00h – 08:00h	Breakfast	Hotels
07:00h – 07:15h	Quarantine Check-in	with entering the bus
07:15h	Buses departure	Hotels
10:00h – 14:30h	Long Distance Final	Miikovtsi
14:30h	Start - EYOC TOUR Long	Miikovtsi
14:30h – 14:45h	Flower ceremony	Miikovtsi
15:00h	Buses departure	Miikovtsi
15:00h	Deadline for teams - Relay	via email or hard copy
17:45h – 18:45h	Team leaders meeting, Relay	Event centre
19:00h – 19:30h	Prize-giving ceremony	Kaloyanova fortress
19:30h – 22:00h	Dinner and party	Kaloyanova fortress

Sunday, July 1

07:00h - 08:30h	Breakfast	Hotels
10:00h – 13:00h	Relay	Petropalovski monastery
Time will be announced on field	Mass start for remaining runners	Petropalovski monastery
13:00h – 13:30h	Prize-giving ceremony, Relay	Finish arena Relay
	Prize-giving ceremony, Teams	Finish arena Relay
13:30h	Closing ceremony	Finish arena Relay
13:45h	Mass start – EYOC Tour	Petropalovski monastery
After 14:00h	Lunch and departure	Hotels



[See the general interactive map in Google.](#)

5. Final Entries

Federation	Men 16	Women 16	Men 18	Women 18	Team Official	Total
Sum	100	100	118	95	84	497
Australia*	1	1	4		3	9
Austria	3	3	3	3	3	15
Belgium	3	4	3	3	2	15
Bulgaria	4	4	4	3	2	17
Croatia	1	2	1	1	1	6
Czech Republic	4	4	4	4	2	18
Denmark	4	4	4	2	3	17
Estonia	4	4	4	4	2	18

	Finland	4	4	4	4	3	19
	France	4	4	4	4	3	19
	Germany	4	4	4	2	3	17
	Great Britain	3	2	3	3	4	15
	Hungary	4	4	4	4	4	20
	Ireland	2	1	4	1	2	10
	Israel	4		4	1	2	11
	Italy	3	4	3	2	2	14
	Latvia	4	4	4	4	4	20
	Lithuania	4	4	4	4	2	18
	Macedonia*		2	2		1	5
	Moldova			1			1
	New Zealand*	1	2	1	4	2	10
	Norway			4	4	2	10
	Poland	4	4	4	4	2	18
	Portugal	3	3	4		2	12
	Romania	4	4	4	4	2	18
	Russian Federation	4	4	4	4	3	19
	Serbia			2	2	1	5
	Slovakia	4	4	4		3	15
	Slovenia	2	4	1	2	2	11
	Spain	4	4	4	4	2	18
	Sweden			4	4	2	10
	Switzerland	4	4	4	4	4	20
	Turkey	4	4	4	4	5	21
	Ukraine	4	4	4	4	2	18
	United States*	2		2	2	2	8
	TOTAL	100	100	118	95	84	497

*According to IOF Foot-O Rules competitors representing member Federations of the IOF, defined by the International Olympic Committee as belonging to the European continent, can compete in EYOC.

Competitors representing other member Federations of the IOF can participate in EYOC but will not be eligible for European titles, medals or diplomas

6. Important deadlines

28 June, Thursday 15:00 h	Deadline for final entries for Sprint distance	Via email with entry form
29 June, Friday 15:00 h	Deadline for final entries for Long distance	Via email with entry form
30 June, Saturday 15:00 h	Deadline for final entries for the Relay	Via email with entry form

7. Transportation, Parking and Locations

All competitors and coaches are obliged to use the organizers transportation during the official EYOC programme. For the Relay it is allowed to use own transportation. For the competitions the bus timetable will be handed out at the Team Leaders' Meetings.

Model event for Long and Relay during 14:00 – 18:00h will model the exact competition (control flags, SI AIR+ stations, Start, Finish, Relay map board, etc.). On the Model event for the Sprint distance during 14:00 – 18:00h only control flags will be placed. During the mentioned times above, it is compulsory to use the official transportation. There will be organized buses travelling to and from hotels to the model events. See the transportation schedule below.

It is possible to go to the model events outside the mentioned hours, but there won't be any control flags, timing stations, start, etc.

Note: For the Model event Sprint – teams, accommodated in hotel Bolyarski and Panorama – Type A, will have to walk (10 minutes) to the Model Event Sprint, and to the model event Sprint Parking (and take a bus) for the Model event Long & Relay.

Bus timetable Model Sprint

Departure Momina krepost(Event Centre) / Model event Long & Relay	Departure from Hotels		Arrive Model Sprint
	Departure Manastira	Departure Lesoparka	
13:55	14:10	14:20	14:45
14:15	14:30	14:40	15:05
14:35	14:50	15:00	15:25
14:55	15:10	15:20	15:45
15:15	15:30	15:40	16:05
15:35	15:50	16:00	16:25
15:55	16:10	16:20	16:45
16:15	16:30	16:40	17:05
16:35	16:50	17:00	17:25
16:55	17:10	17:20	17:45
17:15	17:30	17:40	18:05
17:35	17:50	18:00	18:25
17:55	18:10	18:20	18:45

18:15	18:30	18:40	19:05
18:35	18:50	19:00	19:25

Departure from Model Sprint

Departure Model Sprint	Arrive Momina krepost(Event Centre) / Model event Long & Relay	Arrive Manastira	Arrive Lesoparka
13:30	13:50	14:05	14:15
13:50	14:10	14:25	14:35
14:10	14:30	14:45	14:55
14:30	14:50	15:05	15:15
14:50	15:10	15:25	15:35
15:10	15:30	15:45	15:55
15:30	15:50	16:05	16:15
15:50	16:10	16:25	16:35
16:10	16:30	16:45	16:55
16:30	16:50	17:05	17:15
16:50	17:10	17:25	17:35
17:10	17:30	17:45	17:55
17:30	17:50	18:05	18:15
17:50	18:10	18:25	18:35
18:10	18:30	18:45	18:55

Bus timetable Model Long & Relay**Departure from Hotels**

Departure Manastira	Departure Lesoparka	Arrive Model Long+Relay
14:10	14:20	14:50
14:30	14:40	15:10
14:50	15:00	15:30
15:10	15:20	15:50
15:30	15:40	16:10
15:50	16:00	16:30
16:10	16:20	16:50
16:30	16:40	17:10
16:50	17:00	17:30
17:10	17:20	17:50
17:30	17:40	18:10
17:50	18:00	18:30
18:10	18:20	18:50

Departure from Model Long&Relay

Departure Model Long+Relay	Arrive Manastira	Arrive Lesoparka
13:55	14:10	14:20
14:15	14:30	14:40
14:35	14:50	15:00
14:55	15:10	15:20
15:15	15:30	15:40
15:35	15:50	16:00
15:55	16:10	16:20
16:15	16:30	16:40
16:35	16:50	17:00
16:55	17:10	17:20
17:15	17:30	17:40
17:35	17:50	18:00
17:55	18:10	18:20
18:15	18:30	18:40
18:35	18:50	19:00

Spectators and EYOC Tour participants should park their vehicles only in the allowed parking places, set up by the organizers. For the Long distance, because the road to Miikovtzi is narrow, it is not allowed for EYOC Tour or Spectators to arrive to the parking and the arena before 10:00h.

GPS coordinates:

Sprint distance – Parking – [check interactive map on the website](#)

Long distance Parking

GPS: 42.847393, 25.937778, 42°50'50.6"N 25°56'16.0"E

Link: <https://goo.gl/maps/R27BGzQ6mP72>

Relay – Parking

GPS: 43.089765, 25.699162, 43°05'23.2"N 25°41'57.0"E

Link: <https://goo.gl/maps/W2iybgt5cNK2>

VIP and Media: All VIPs and media representatives may use their own transportation to all events. However, they need to follow the parking instructions at the Parking areas at the competitions.

8. Payment

Payments are accepted as cash during accreditation. Payment by credit card is not possible. Currency accepted is the Euro or the Bulgarian Leva. There are quite a few bank branches nearby where you may exchange currencies.

Payment details:

SCO Trapezitca 1954
79 Stefan Stambolov, V.Tarnovo, Bulgaria
Plamen Legkostup
BG77BUIN95611000593214
BUINBGSF
Allianz Bank Bulgaria

9. Medical care

There will be an ambulance with first aid medical staff at the Arena during competitions. If a competitor is injured in the terrain, the situation and the location of the patient must be notified to the nearest official or at the finish line. First aid and evacuation will be organized by the organizers and the medical crew.

Injuries / illness occurring outside of competition activities are treated by the public health care system. There is a general practitioner at Veliko Tarnovo center and two hospitals (marked with red H on the [general map](#)) nearby.

In the case of emergency: The national emergency number is 112. The staff at the emergency call center speak English. Additionally, telephone numbers of the organizers will be given to each competitor/official during accreditation to use in case of emergency.

10. Media

All media representatives will have a badge which allows them to go to specific areas throughout the competitions.

Media & Ceremonies

After finishing their competition and returning the GPS equipment, all athletes will exit through the press zone. Field interviews with athletes may take place before entering the press zone in cooperation with the host broadcaster.

11. Ceremonies

Timetable for the ceremonies:

Ceremony	Date and Time	Place
Flower ceremony - Sprint	29 June, 12:15	Finish arena - Sprint
Opening ceremony EYOC	29 June, 17:30	Veliko Tarnovo City center
Prize-giving ceremony - Sprint	29 June, 18:30	Veliko Tarnovo City center
Prize-giving ceremony - Long	30 June, 19:00	Kaloyanova fortress
Prize-giving ceremony – Relay	1 July, 13:00	Finish arena – Relay
Prize-giving ceremony – Teams	1 July, 13:00	Finish arena – Relay
Closing ceremony EYOC	1 July, 13:30	Finish arena – Relay

[Check interactive map for locations.](#)

Opening ceremony

The Opening ceremony will be held on Friday, 29 June at Veliko Tarnovo city center at 17:30. Teams will attend the opening ceremony in their official team uniforms. Provided the weather permits, teams will assemble on a specific spot and will be led into the Ceremony Area. Teams accommodated in Hotel Momina Krepost, Lesoparka and Manastira will be transported by buses. Teams in Bolyarski and Panorama will have to walk to the ceremonies location. Bus times will be announced at the Team Leader's Meeting.

Flower ceremony

The flower ceremony announcing the first three of each class in the EYOC Sprint and EYOC Long will be held in the finish arena of each competition. Official team uniforms are not necessary for the flower ceremony.

Prize-Giving ceremony

The IOF Protocol for Prize-giving ceremonies will be followed. In this respect, the top 6 athletes will appear wearing their official team uniforms. The national anthem of the winner is played. All stand for the national anthem.

The Prize-Giving Ceremony for Team score will be held right after the Relay ceremony.

Closing ceremony

The Closing Ceremony for EYOC 2018 will be held immediately after the Prize-giving ceremony for Team score at the Relay Arena.

12. Team Materials and Information

Each team will get an EYOC information/material package after accreditation. Accreditation will be open from June 28th, 10:00h in the Event Center

The package includes the following items:

Team Package:

- Bulletin 4
- Model event maps (Sprint, Long + Relay)
- SI-card – The athlete must use the assigned SI-card during all starts.
- Souvenirs for the team

GPS tracking

GPS tracking will be used both for the Long distance Final and the Sprint distance Final. The runners who will use a GPS device will be announced the day before each start in the team leaders meeting. GPS units will be handed out before entering the pre-start zone. The GPS vests will be handed at the first TEAM LEADERS' MEETING. Using GPS device is compulsory for all the runners are in the list.

Live results

[EYOC Sprint](#)

[EYOC Long](#)

[EYOC Relay](#)

or at liveresultat.orientering.se

Online results: All rights reserved to Peter Löfås

TV results: All rights reserved to Martin Zoller

Sources of information

Bulletin 4 is the most important source of competition information for the teams.

Additional information may be distributed to the team boxes (in the Event centre) before each Team Leaders' Meeting.

All Team Leaders may send questions or requests for the agenda up to 30 minutes before each meeting, thus giving the opportunity for necessary preparation. Send your questions at info@eyoc2018.eu Minutes of the Team Leaders' Meeting will be published on the official website each day.

Number bibs

All competitors must wear their respective number bibs at all competitions. There will be a new number for each start. The bibs must be entirely visible and shall not be folded over, cut down or covered in any way. The number bibs are **handed out to Team Officials at the Teams Leaders' Meeting** the day before. The bibs are required when entering the buses for the competitions.

Teams Pigeon Holes

Each team will have a pigeon hole at the Event Center where they will receive start and results lists and any other information.

13. Anti-doping

Doping is strictly forbidden, and the organizers of the EYOC are dedicated to supporting the anti-doping authorities in their work.

14. Rules and procedures

Rules

The rules applicable for the event are

- IOF Foot Orienteering Events (valid from 1 January 2018)
- IOF Special Rules for the 2018 EYOC

These rules are accessible on the IOF website at <http://www.orienteering.org>

Competitions

The start interval in the Long distance competition is 2 minutes and in the Sprint distance is 1 minute. Starting time is drawn randomly in 4 starting groups (1 – early, 4 – late). Each Federation may allocate a maximum of 1 athlete in each starting group. Competitors from the same Federation shall not start consecutively.

Entry form – Sprint and Long:

[DOWNLOAD LINK FOR THE ENTRY FORM – Sprint and Long](#)

Entry form – Relay:

[Download link for the Entry Form - Relay](#)

You may also obtain a printout of the entry forms and fill them in and submit them to the Event Office (Hotel Momina Krepost) or at the Arena.

For the MIX Relay, teams can be formed and submitted up to 9:00h at the Finish Arena or the day before in the Event Office (check Event office working hours).

Complaints

Complaints will be made using the official form provided by the organizer. The deadline for complaints is 15 minutes after the organizer announces the official results. The complaints should be submitted at the secretary tent and it is free of charge.

Arenas

There will be a "bag drop-off" point for bags coming from the quarantine areas. Water will be available in the Finish area. There will be toilet facilities available at quarantine and finish.

For the Sprint distance – there will be team zone for changing and rest which can be reached by following a marked route.

For the Long distance Final and the Relay there will be common team tents.

Timing systems and punching

SPORTident AIR+ Touch free punching with a range of 30cm is used as electronic punching and timing system. At the finish, the time is taken via electronic mat when crossing the finish-line, no station needs to be punched.

Coaching

Coaches are allowed to go to into the quarantine area. They are allowed to leave the quarantine at any time after quarantine is closed but after leaving, it is not possible to come back.

For both the Sprint and the Long distance Final coaches will be allowed to accompany the athletes as far as the pre-start gate.

Accreditation

Accreditation will take place from 10:00-22:00 on June 28th, Thursday only.

All competitors and officials are obliged to wear their official badge to the quarantine, all the arenas, during transportation, to the ceremonies and during the meals.

For the Friendship party, it is necessary to show your accreditation card in order to be allowed to enter in Kaloyanova fortress.

15. Taping and marking

Red-white tape –The crossing points marked on the map with Symbol 708 will be taped on the terrain with red-white tape.

Blue tape – shows dangerous areas and temporary construction areas (Symbol 714). Zones taped with blue tape should not be crossed for runner's safety.



"DO NOT PASS" sign is used for passages forbidden to enter in the Sprint.



16. Embargoed areas

Check the [Google map](#) to see all embargoed areas.

Tsarevets fortress and the suburbs are embargoed for orienteering activities, using any kind of map, and also for going for a walk.

The marked parts in the Google map (link above) are fully embargoed and forbidden to visit.

You may pass by in a car/bus only using the main roads.

17. Model events

Model event - Sprint

Control points	5 (only prisma flags)
Courses	There aren't pre-set courses for this model event
Shoes	Forbidden to use spikes or short-dobbed orienteering shoes

Model event – Long & Relay

Control points	8 (SportIdent AIR+ stations)
Courses	There aren't pre-set courses for this model event
Test Model	SPORTIdent AIR+
Start demonstration	Start corridors will be built demonstrating the procedure
Finish demonstration	Finish corridor will be built and procedure will be shown
Relay	Map stand will be demonstrated

All athletes are encouraged to participate in both the Model Events (1 for Sprint distance and 1 for Long and Relay).

There will be a Technical Model Event demonstrating the use of SI AIR + Touch free system for competitors to familiarize themselves with what to expect during the competition. It will be held on the Model Event Long+Relay. Also, the start procedure, the finish and map stand for relay will be demonstrated only at the Long+Relay Model.

18. Maps and courses

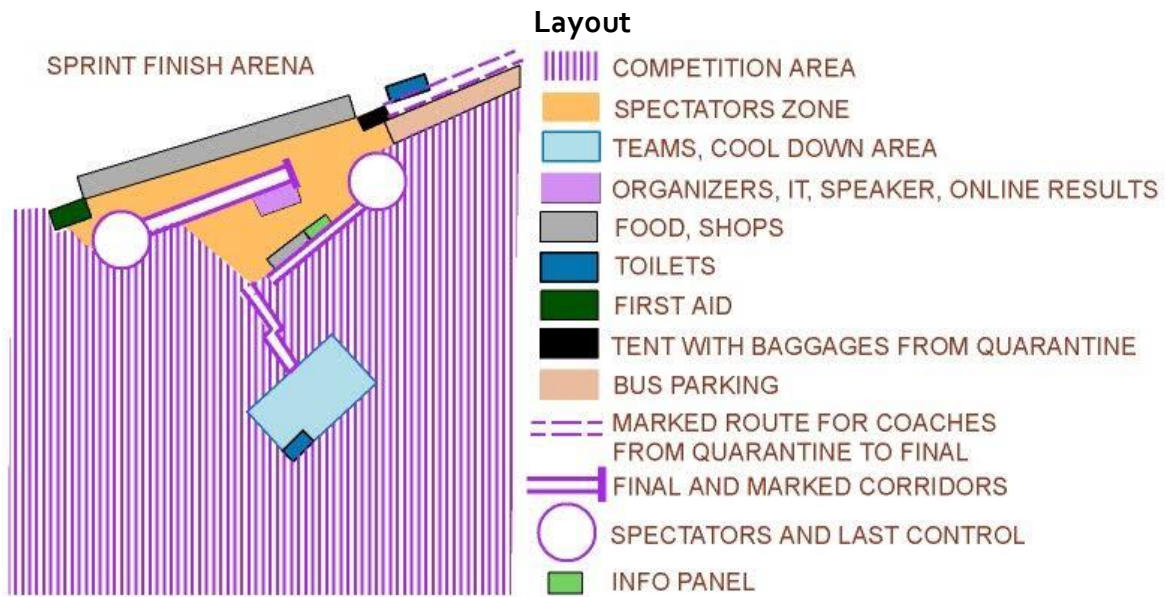
All the maps are drawn according to the International Specification for Orienteering Maps (ISOM 2017) and the International Specification for Sprint Orienteering Maps (ISSOM 2007).

All EYOC maps are spot colour offset printed.
The maps will be handed out at the start in a plastic bags.

All control descriptions are printed on the map.
Loose control descriptions will be available 2 minutes before the start.

Sprint distance Final

Format	Sprint distance
Start interval	1 minute
Maximum time on course	40 minutes
Map scale	1:4000, contours – 2.5m
Map size	240x190mm – Maps will be in plastic bags
Loose description size	MAX: 50x140mm
Drinking stations	None on course, water at the finish
Shoes	Due to the historical nature of the area orienteering shoes with spikes or dlobbered metal spikes of any kind are forbidden . Competitors using this type of shoes will be disqualified.
Distance from Event center	7km
Detailed program	Quarantine closes with entering the bus Buses departure (bus departure lists will be distributed at Team Leaders' Meeting)
10:00	First start EYOC
12:15	Flower ceremony
12:45	First start EYOC Tour
17:30	Opening ceremony
18:30	Prize-giving ceremony Sprint
19:30	Team leader's meeting, Long
20:00	Dinner



Sprint map



Scale – 1:4000, e-2.5m, according to ISSOM

Pre-start -10 min, From Quarantine to Pre-start – 400 meters

Moderately steep urban and fortress terrain. Lots of small paved roads, narrow stairs and walls. 70 % of the map covers the fortress.

Symbol 708 will be used for narrow passageways in a space with many stone walls and forbidden access. This passage will be marked with white-red tape on the terrain.

Competitors must cross this area only on the marked places on the map.

Running on walls is strictly forbidden. Competitors who pass through forbidden passages or who run on walls. It is only allowed to jump over walls marked with Symbol 519.

The ground in the fortress is very uneven and most of the paths and alleys are paved with cobble stones.



On the terrain there are lights built specially for the famous Sound and Light show at the fortress. These lights will not be marked on the map. There won't be any control points on these objects.



Courses – Sprint distance Final

Class	Length (Optimal route)	Climb	CPs	Winning time
W16	2.00km	85m	15	10-12 minutes
W18	2.10km	90m	15	10-12 minutes
M16	2.20km	105m	15	10-12 minutes
M18	2.50km	115m	17	10-12 minutes

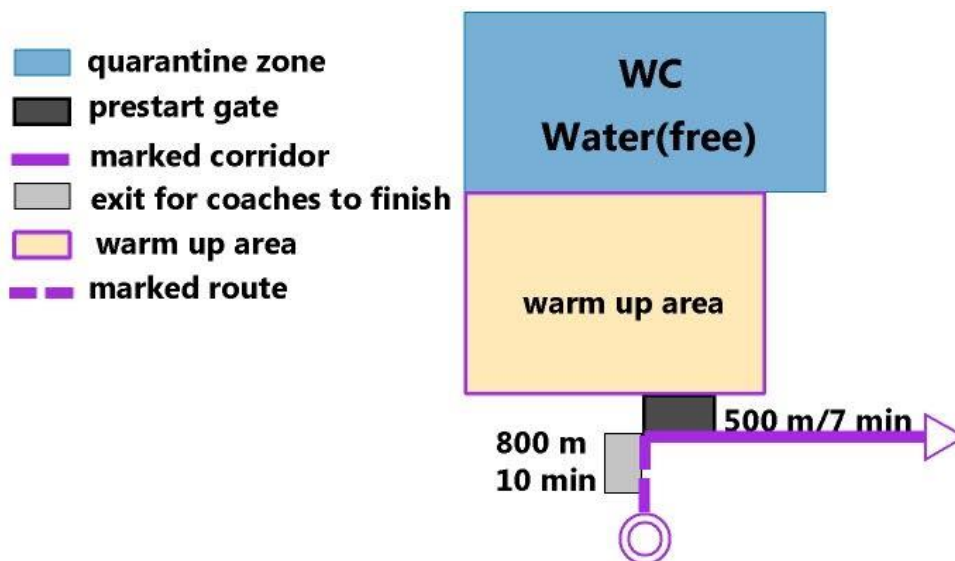
There will be a Spectators control for all classes at the Sprint Distance.

Sprint distance Final Quarantine

For the Sprint distance the quarantine closes with entering the bus.

Clothes will be transported from the quarantine to the finish by the organization. Please leave your clothes / bags in the drop off zone.

All coaches will be able to leave the quarantine at any time and walk to the finish arena following the marked route. Coaches may accompany the athletes as far as the pre-start.



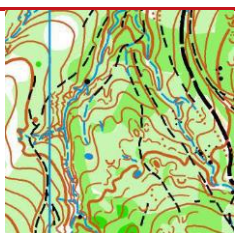
Long distance Final

Format	Long distance
Start interval	2 minutes
Maximum time on course	120 minutes
Map scale	1:10000, contours –5m
Map size	210x290mm
Loose control description	MAX: 50x130mm
Drinking stations	There will be three refreshment points during the course for all classes.
Distance from Event center	55 km
Detailed program	<p>Quarantine closes with entering the bus</p> <p>7:15 Bus departure</p> <p>10:00 First start EYOC</p> <p>14:30 First start EYOC Tour</p> <p>14:45 Team leader’s meeting, Relay</p> <p>19:00 Prize-giving ceremony</p> <p>19:30 Dinner & Friendship party at Kaloyanova fortress</p>

Layout



Long map



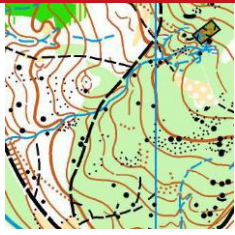
Scale – 1:10000, e-5m, according to ISOM 2017

Pre-start gate at -7 min. Marked route from Quarantine to Pre-start gate (1200m).

Moderately steep terrain with lots of microforms – summits, valleys and terraces. At some places there are some boulders, stony grounds and rocky formations. Vegetation is mostly deciduous, varies in all categories. The greater part of the area (80%) is of good runnability and visibility with paths of all categories.

In some areas there are many trees of varying nature which are not marked on the map as a distinct tree. There won't be control points on these distinct trees. There are some old wide paths that are not used. **Symbol № 508.000 and 508.004** is used to mark them on the map.

Most of the terrain is covered with stony ground.



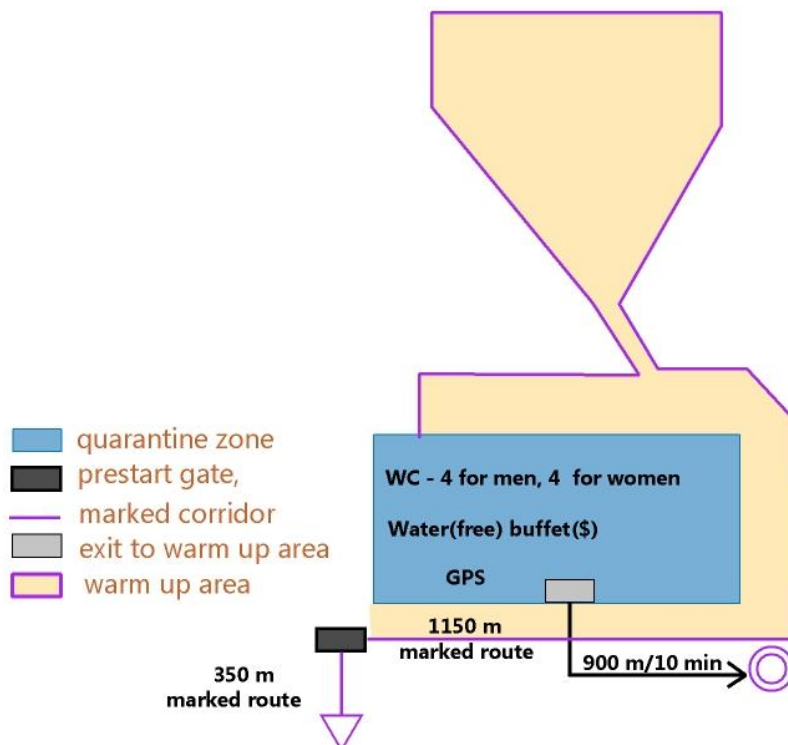
On the map Symbol 419 (Prominent vegetation feature) is not used. There will be three refreshment points for the Long distance for all classes. They are placed on common routes. Water will be provided. Personal drinks will not be allowed. Only for Men 18 – there will be a map change on the course. (e.g. first map ends with control 8. The second map has the triangle at the position of control point number 8. Course continues with control point 9). At the map change runners punch the control point and leave the first map, and take the second map from an official.

Courses – Long distance Final

Class	Length	Climb	CPs	Winning time
W16	4.45 km	235 m	13	35-40 minutes
W18	5.15km	365 m	14	40-45 minutes
M16	5.50km	310 m	14	40-45 minutes
M18	6.60km	420 m	15	45-50 minutes

Long distance Final Quarantine

For the Long distance the quarantine closes with entering the bus. Clothes will be transported from the quarantine to the finish by the organizers. Please leave your clothes/bags in the drop off zone. There won't be a bag drop-off at the pre-start gate. All coaches will be able to leave the quarantine at any time and walk to the finish arena following the marked route. Coaches may accompany the athletes as far as the pre-start. There will be marked route from the pre-start to -3 min (350m).



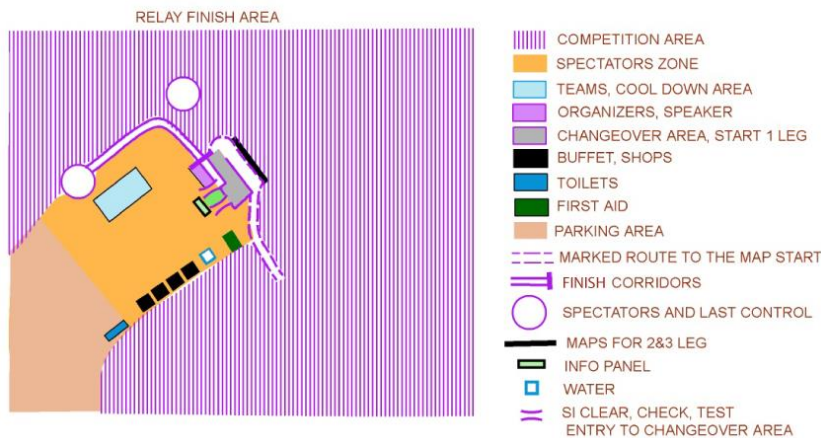
Relay

Format	Relay (3 runners)
Start interval	Mass start for first leg
Maximum time on course	240 minutes (whole team)
Map scale	1:10000, contours – 5m
Map size	240x240mm
Drinking stations	There will be a refreshment point at the spectator control.
Distance from Event center	3 km

Detailed program

10:00	Start of 1 st leg - Relay Mass start for remaining runners to be announced on field
13:00	Prize-giving ceremony – EYOC Relay, Team scores
13:30	Closing ceremony
13:45	Mass start EYOC Tour
14:00	EYOC teams departure

Layout



Relay map



Scale – 1:10000, e-5m, according to ISSOM 2017

Moderately steep terrain with plateau. At some places there are stones, cliffs and rocky formations. Vegetation varies in all categories with parts of low visibility and runnability due to vegetation and stony ground. There are roads and paths of all categories.

In some areas there are many trees of varying nature which are not marked on the map as a distinct tree. There won't be control points on these distinct trees.

On the map the Symbol 419 (Prominent vegetation feature) is not used. There will be a refreshment point at the spectators' control. Water will be provided. Personal drinks will not be allowed. Most of the terrain is covered with stony ground.

Courses – Relay

Class	Length	Climb	CPs	Winning time_(whole team)
W16	3.1-3.2km	100 m	16	75 minutes
W18	3.2-3.4km	150 m	16	90 minutes
M16	3.5-3.6km	165 m	17	90 minutes
M18	3.8-4.1km	190 m	18	105 minutes

(*) The organization reserves the right to make minor changes to the courses stated above

19. Quarantines

There will be quarantine areas for the Sprint distance Final and the Long distance Final. There is no quarantine for Relay and EYOC Tour races.

General Rules

At the check-in to the buses leaving for the quarantine area, each athlete and coach must show his or her accreditation card and running bib. GPS units will be handed out before entering the pre-start zone. The GPS vests will be handed at the TEAM LEADERS' MEETING for the Long distance. These units will be returned immediately after the competition.

The use of mobile phones, computers or any other communication devices inside the buses and the quarantine zone is strictly forbidden. It is not allowed to bring any maps of the competition areas into the quarantine zone.

The quarantine will include indoor places as well as outdoor areas.

There will be toilets and drinkable water in the quarantine.

20. Start procedure

There is a clock showing the real time in the quarantine, at the start line, and at the finish.

Pre start: GPS devices are distributed

-3 minutes: SI-cards are cleared, checked and tested.

-2 minutes: Control descriptions can be taken;

-1 minute: Position behind the start line.

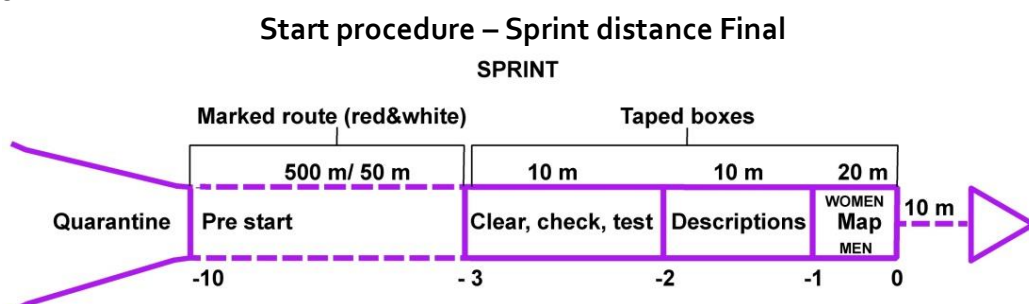
Start: The competitor's map is placed face down next to the start line.

5 seconds before the start time, the count-down begins with short beeps and a long beep at exactly the start time.

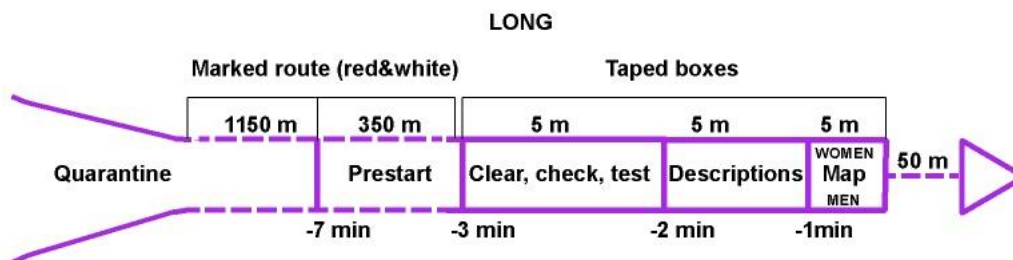
For the Sprint distance there will be a punch start. (it will be tested on the Long and Relay model event)

At the last beep, the competitor starts by punching the start station, then taking his map and running to the map start marked on the map, by following the taped route in the terrain.

The map start (start triangle) is marked in the terrain by a control flag. The route to this flag is marked with red-white tapes.



Start procedure – Long distance Final



21. EYOC Tour



All you need to know

Visit the website to see the full information.

<http://eyoc2018.eu/eyoc-tour/>

22. Social events & Sightseeing

- Friendship party** The friendship party will be held right after the prize-giving ceremony for the Long distance.
It will be held at Kaloyanova fortress for all teams and team leaders. Bring your accreditation cards!



A warm welcome to old capital of Bulgaria - Veliko Tarnovo!

EUROPEAN
YOUTH
ORIENTEERING
CHAMPIONSHIPS

EYOC 2018
28 JUNE-1 JULY - VELIKO TARNOVO, BULGARIA

ЕВРОПЕЙСКО
ПЪРВЕНСТВО ПО
ОРИЕНТИРАНЕ ЗА
ЮНОШИ И ДЕВОЙКИ



Main sponsor | Генерален спонсор



Organizers | Организатори



Media partners | Медийни партньори



Отпечатано с любезното съдействие на
копирен център и книжарница www.sirus-vt.com

Programme | Програма

Friday, June 29th
10:00h - Sprint distance Final - Tsarevets
12:15h - Flower ceremony - winners Sprint - Tsarevets
17:30h - Official opening ceremony + Prize-giving ceremony Sprint distance - Summer Theatre, Park Marno Pole

Saturday, June 30th
10:00h - Long distance Final - Milkovtsi, Elena
14:30h - Flower ceremony - winners Long - Milkovtsi, Elena
19:00h - Prize-giving ceremony Long distance - Kaloyanova fortress, Arbanassi

Sunday, July 1st
10:00h - Relay - Petropalovski monastery, Lyaskovets
13:00h - Prize-giving ceremony Relay - Petropalovski monastery, Lyaskovets
13:30h - Closing ceremony EYOC 2018, Petropalovski monastery

Петък, 29 юни
10:00ч - Спринтова дистанция - Царевец
12:15ч - Церемония с цветя - победители Спринт
17:30ч - Официално откриване на първенството и официално награждаване - Спринт - Летен театър

Събота, 30 юни
10:00ч - Дълга дистанция - Мийковци, Елена
14:30ч - Церемония с цветя - Дълга д., Мийковци
19:00ч - Награждаване - Дълга дистанция - Калоянова крепост, Арбанаси

Неделя, 1 юли
10:00ч - Щафета, Петропаловски м-р, Лясковец
13:00ч - Награждаване Щафета, Петропаловски манастир, Лясковец
13:30ч - Официална церемония за закриване на състезанията

Sponsors & Partners | Спонсори и партньори

