

The Evaluation of the Maps

1. Ski Orienteering 2011

WMOC

Norway, Sjusjøen-Lillehammer

Long distance, February 5, 2011

Map: Natrudstilen, 1:10 000/5 m

Middle distance, February 6, 2011

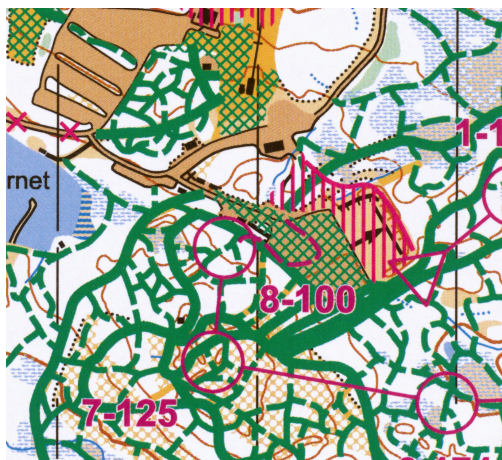
Map: Natrudstilen, 1:10 000/5 m

Both maps had been laser printed. The quality was very good, but there was not overprint effect.

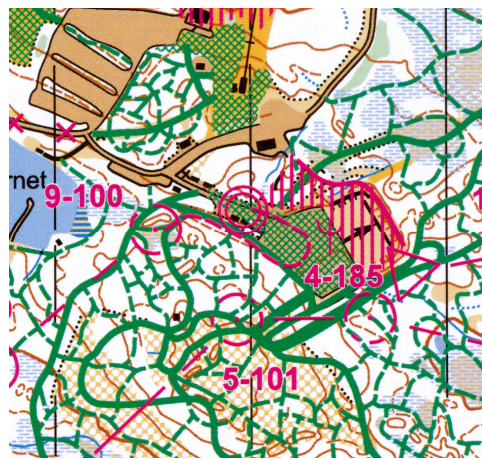
General appearance of both maps was clear and readable. Every symbol had been drawn carefully (nice track crossings etc.).

The bank line of the water body and the edge line of the impassable marsh had not been drawn.

The line widths of the tracks in the long distance map were too big. For instance, the line width of the symbol 801 Very wide track shall be 0.85 mm according to the ISSkiOM 2009. In the long distance map it was over 1 mm. This was strange and totally unnecessary error, because in middle distance map (same terrain, same scale) the line widths were correct.



Long



Middle

EOC, JWOC, EYOC

Norway, Sjusjøen-Lillehammer

Long distance, February 2, 2011

Map: Natrudstilen, 1:15 000/5 m

Same map as in WMOC, but different framing of the area.

Sprint, February 4, 2011

Map: Natrudstilen, 1:5000/5 m

Same map as in WMOC, but different framing of the area.

The track symbols were enlarged correctly (1,5x), but other map symbols were not (1,5x).

Middle distance, February 5, 2011

Map: Natrudstilen, 1:10 000/5 m

Same map as in WMOC, but different framing of the area.

Relay, February 6, 2011

Map: Natrudstilen, 1:10 000/5 m

Same map as in WMOC, but different framing of the area.

2. Mountain bike orienteering, 2011

WMOC

Sweden, Leksand-Rättvik

June 17-20, 2011

Long 1:10 000/5 m

Middle 1:10 000/5 m

Sprint 1:7500/5 m

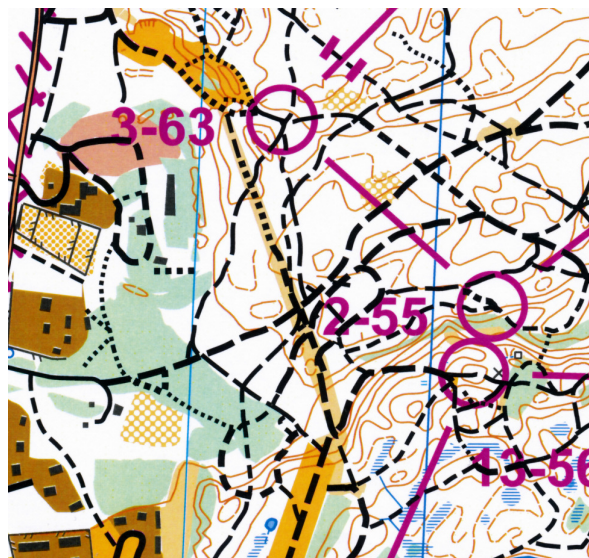
All of the maps had been laser printed. The quality was very good, but there was not overprint effect.

All the tracks and paths had been drawn very carefully.

The correct colour for buildings, power lines etc. should have been black 70 %. This colour was too dark in the all maps.

Using of the form lines could not have been necessary in this kind of terrain, where there is enough height difference. The form lines were not used.

In every map the north lines were not exact according to the paper edges. Why? Also the spacing of the north lines was not drawn according to the ISMTBOM.



**WOC
Italy, Vicenza, Veneto**

August 20-28, 2011

The original maps were not sent to the IOF to be evaluated. This evaluation has been written with help of the competition map printed in the Suunnistaja magazine of the Finnish Orienteering Federation. The maps in the official web pages of the event are in very small scale.

The latest version of ISMTBOM has been valid over one year, but still the black 100 % colour was used also with other symbols than just tracks and paths. The correct colour for buildings, power lines etc. shall have been black 70 %.

A totally new track and path symbol was used. Bulletin 4: *In agreement of the IOF EA, we used the new symbol 839.2 for rideable area (orange colour). This new symbol will be described during Team Leaders' meetings and will be demonstrated during the model event.*

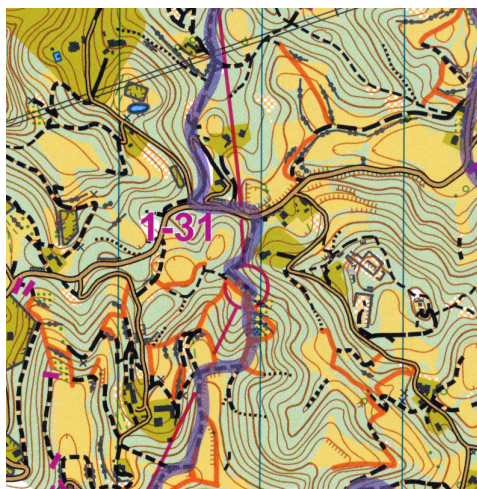
The ISMTBOM 2009 states: *For IOF events, deviations are permissible only with the sanction of the IOF Map Commission (IOF MC).*

The map of the middle final, Pozzplo di Villaga, 1:15000/5 m

In the map sample the orange lines will be seen.

In the upper right part of the map there is a path symbol that is not in the ISMTBOM.

The thick blue line is the route choice of the winner, not a track symbol.



The map of the sprint final. The last part of the courses were in a very (too) complex terrain. This caused a complaint, in which the silver medalist in men's class disqualified himself.

