

The ISOM revision project

ICOM 2014, Lavarone, Italy

The ISOM legacy - Map specifications for orienteering

- (1962: European Championships (black, brown, blue); 1:25000; 10 m)
- 1969: black, brown, blue, **yellow**;
1:25000/1:20000(?); 5 m
- 1975: black, brown, blue, yellow, **green**;
1:20000/**1:15000**; 5 m (or free choice between
2 and 10 m); A, B (and C) symbols
- 1982: more greens (+ adjusted colours);
1:15000 (1:10000 exceptionally); 5 m (2.5 m
exceptionally); A, B (and C) symbols; up to
20% variation allowed for line thickness

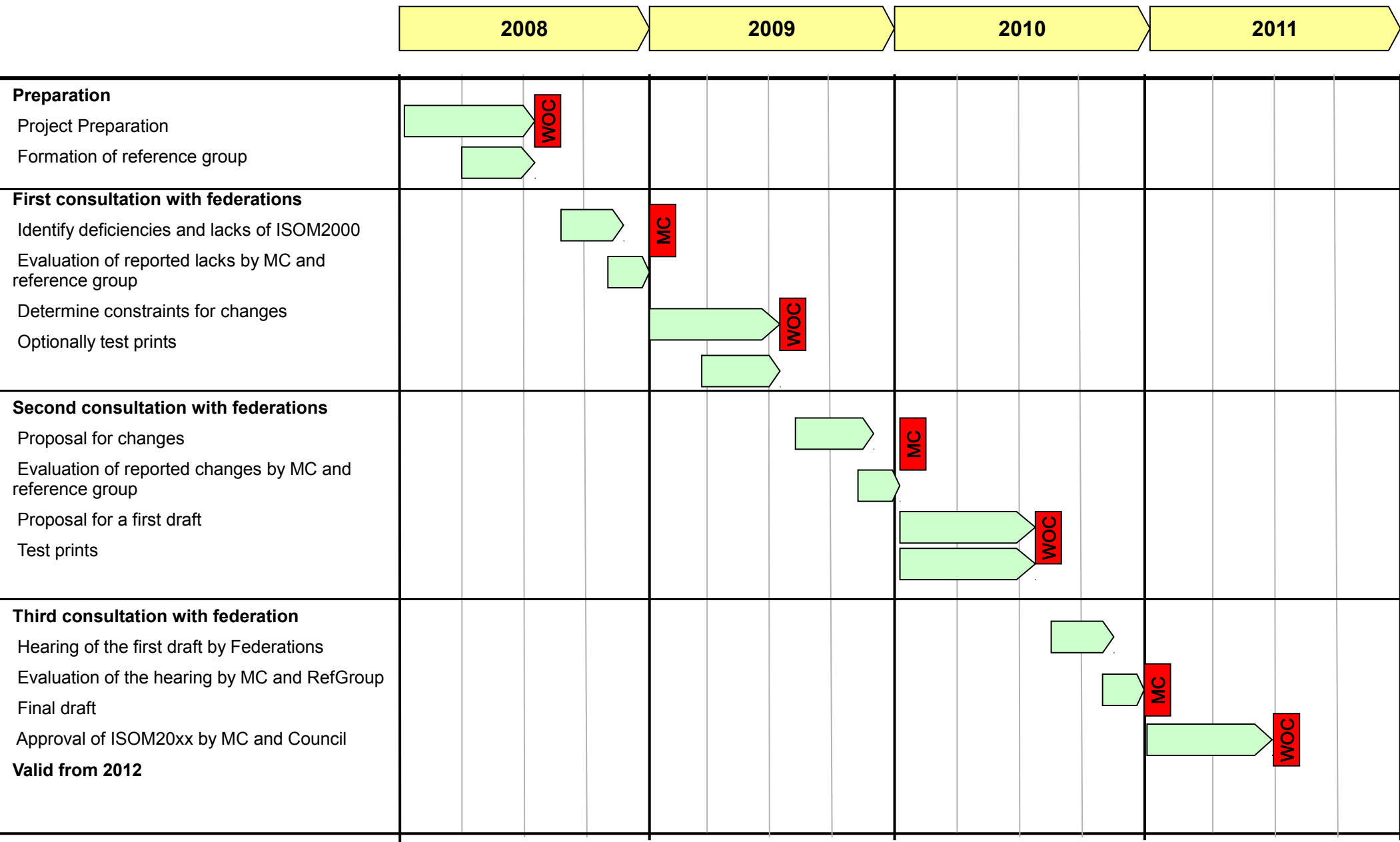
The ISOM legacy - Map specifications for orienteering

- 1990: Adjustments; 1:15000 (1:10000 exceptionally), 5 m (2.5 m exceptionally); up to 20% variation allowed for symbol dimensions
- 2000: Adjustments; 1:15000 (1:10000 enlargement), 5 m (2.5 m exceptionally), up to 5% variation allowed for symbol dimensions
- 201x: Adjustments; 1:15000 (1:10000 enlargement); 5 m (2.5 m exceptionally), ...

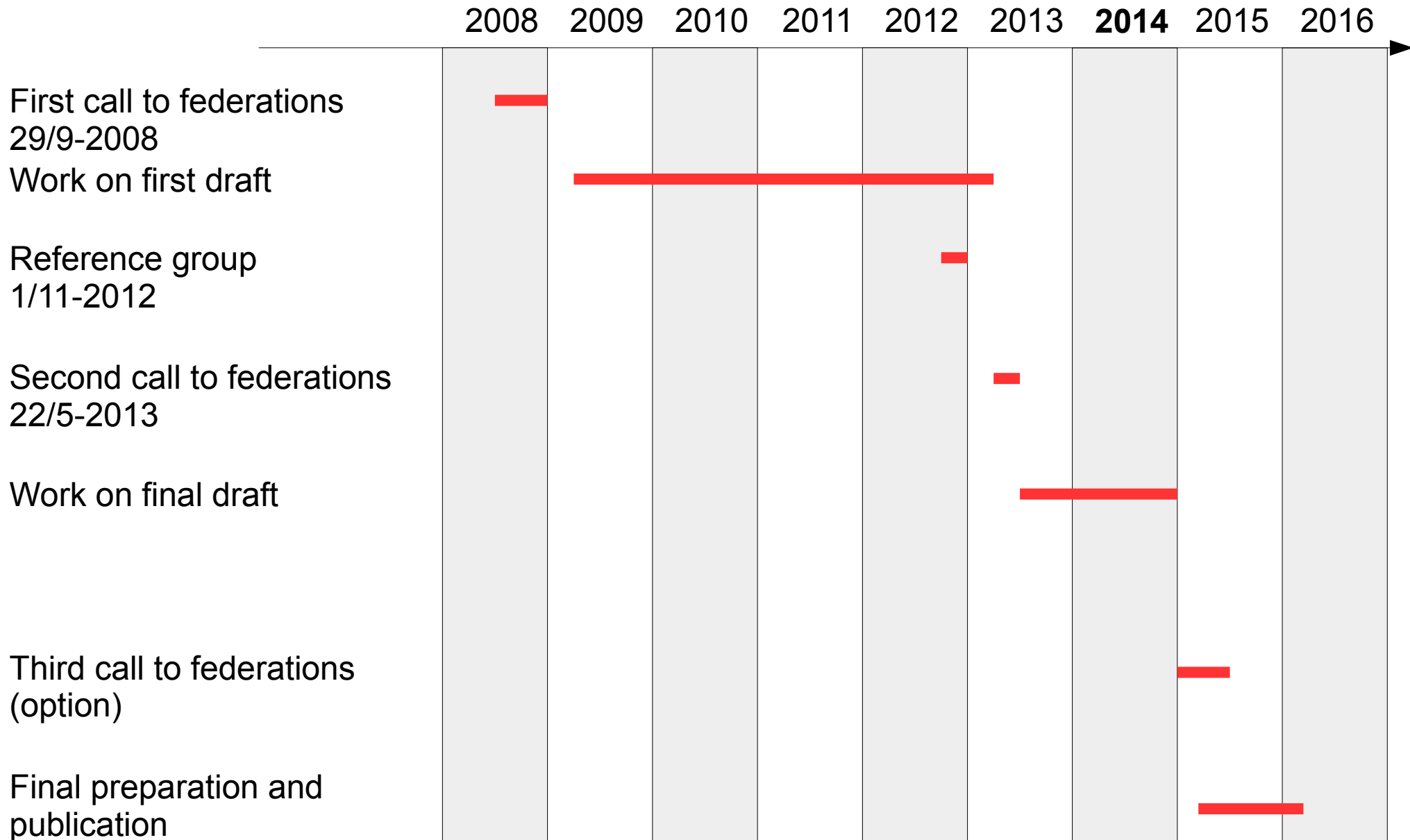
The ISOM is perfect, is it not? So why is a revision needed?

- Alignment with the ISSOM
- Better support for alternative printing methods
- Responding to input on ISOM symbols
- Experiences from map evaluations (deviations, observed problems, symbol application, ...)
- Focus even more on generalisation
- Consistency issues
- Undergrowth symbols revisited
- Include symbol footprints

Preliminary roadmap ISOM 201x (june 2008 version)



Project history and plan



So, has anything been done?

- Suggesting and testing alternative/new symbols
 - Undergrowth, boulder field / stony ground, vegetation boundary, form lines, adjusting dotted lines, symbol sizes, ...
- Reading, structuring and discussing input from federations
- Investigations into colour printing and colour systems (SUI)
- Colour vision issues (input from AUS)
- Test prints (SUI)

Changes

- Simplification: Map scale 1:10000 strict enlargement of 1:15000 (exceptions removed)
 - magnetic north lines (spacing)
 - course overprint symbols
- Clarify minimum dimensions
- Minimum distance / white space between symbols
- Describing the footprints of symbols

Changes

- Alignment with ISSOM (symbols, symbol dimensions, impassable / passable, ...)
- Adjustment of some point symbol sizes
- Introduction of some new symbols
- Tightening up the definitions for broken ground, stony ground and boulder field
- Form lines - new graphical implementation still considered (thinner line)

Proposed changes, cont.

- Undergrowth - new graphical implementation sought
- Alternative for vegetation boundary (green line)
- Alternative colour for paths in rocky areas (grey)

ToDo

- Colour specification
 - CMYK values, CIE Lab, HVS, PMS
- Decisions still to be made
 - Form lines
 - Screen densities
 - Line widths, symbol spacings, ...
 - Impassable / forbidden
- Document production and publishing
 - Create graphics

Questions?