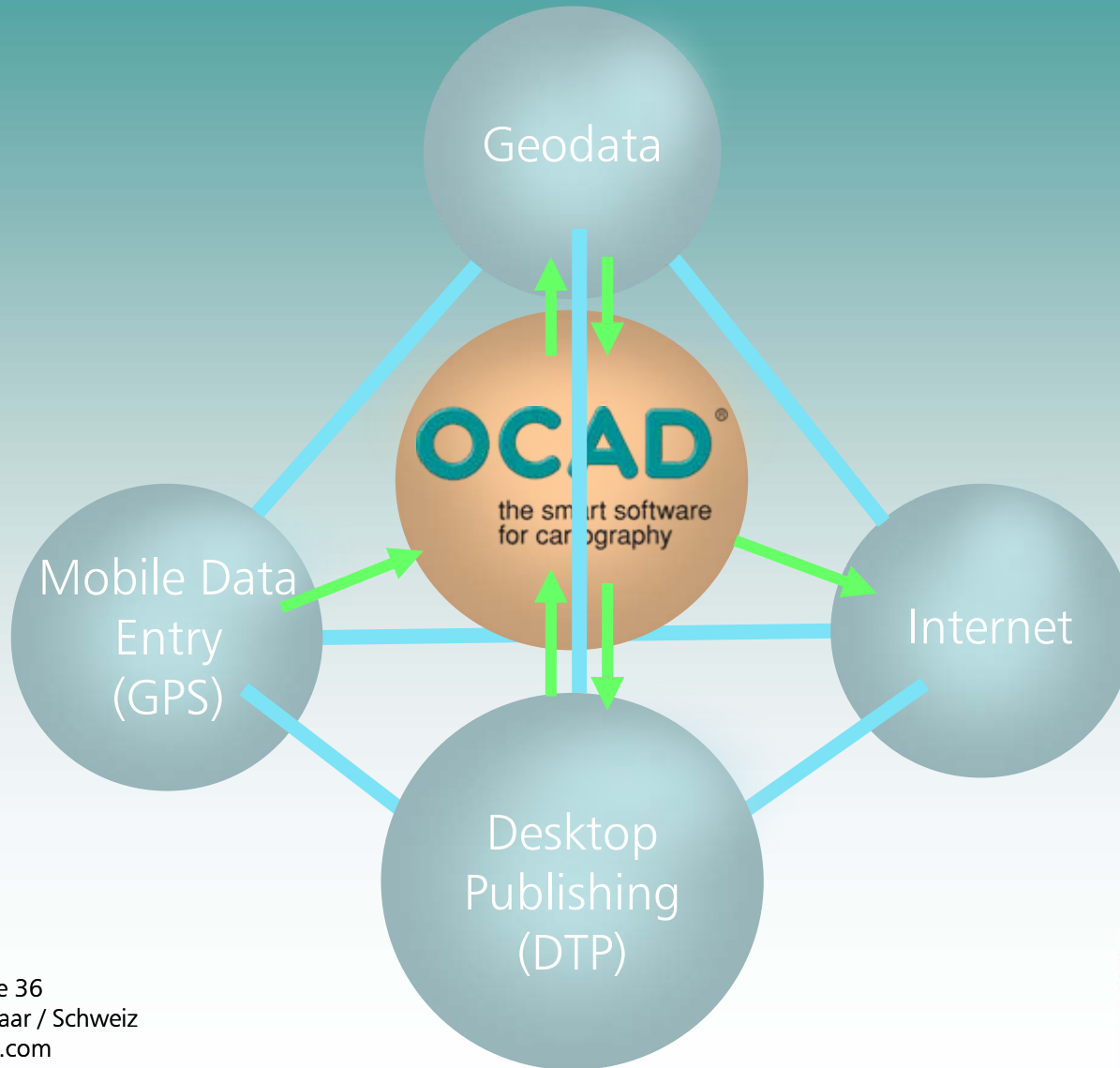


OCAD® 10

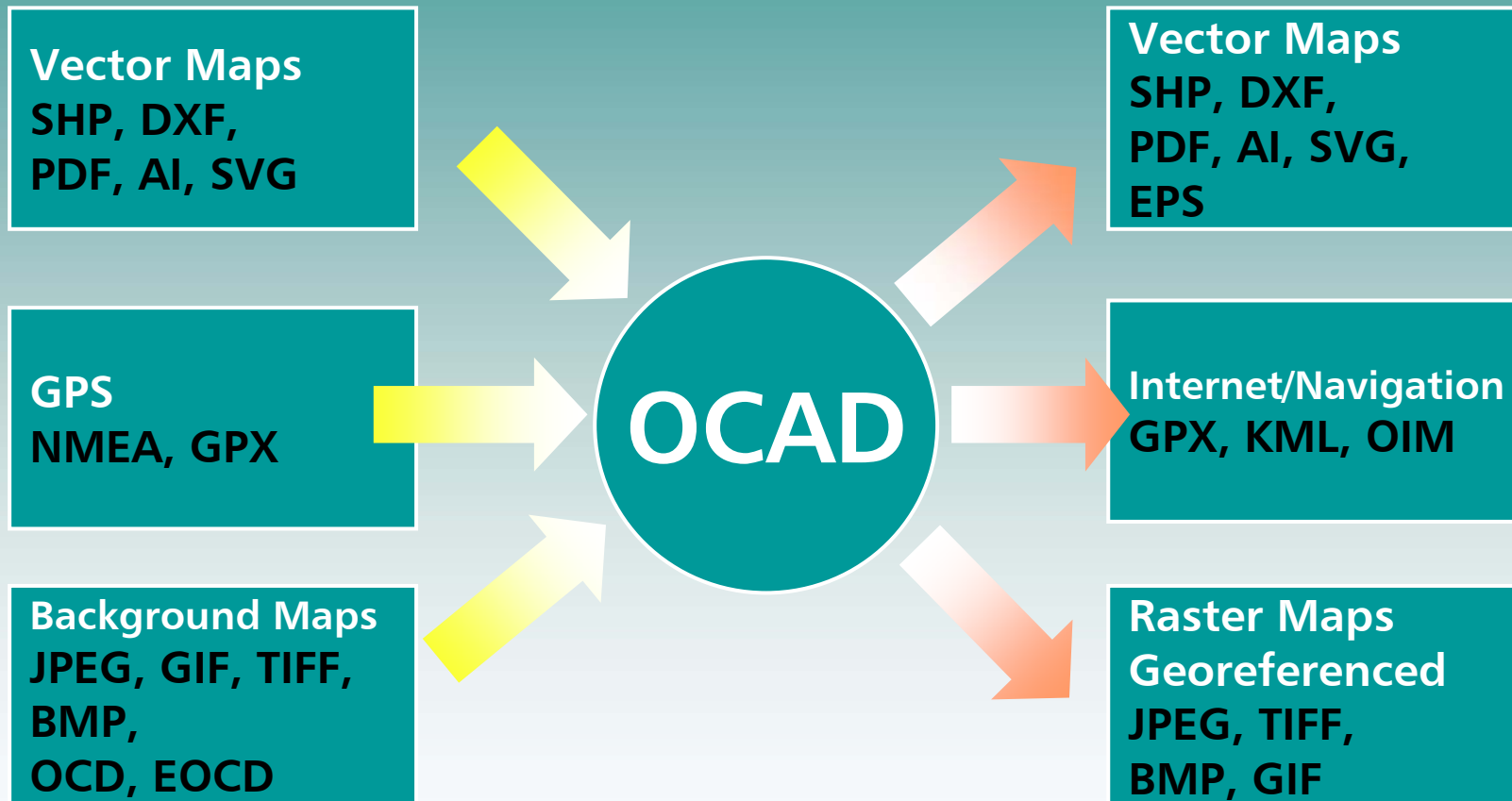


OCAD – smart for cartography –
A niche product towards a
professional cartographic
software

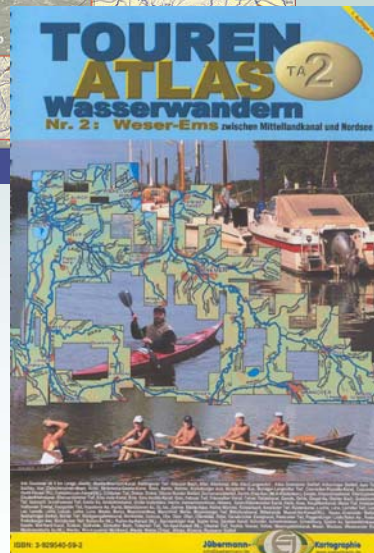
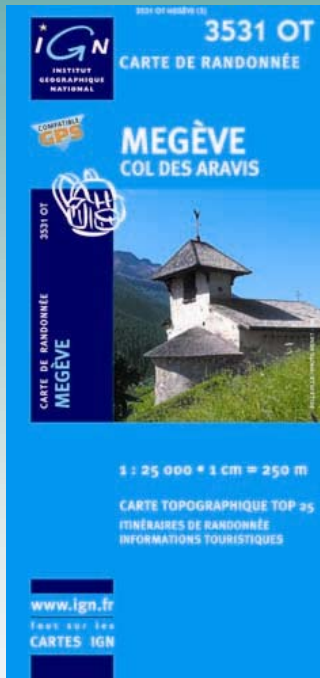
Positioning of OCAD



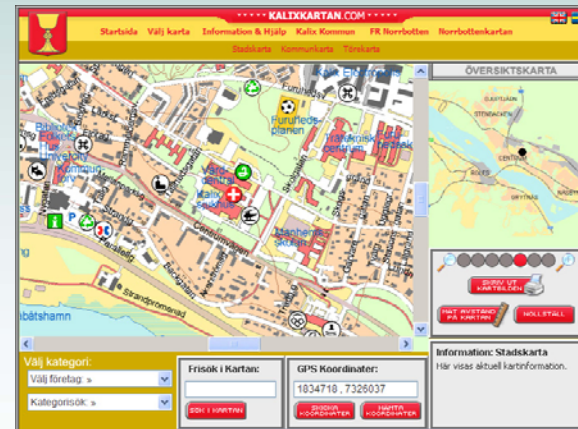
OCAD – Import and Export



Wide Worldwide Variety of OCAD Applications



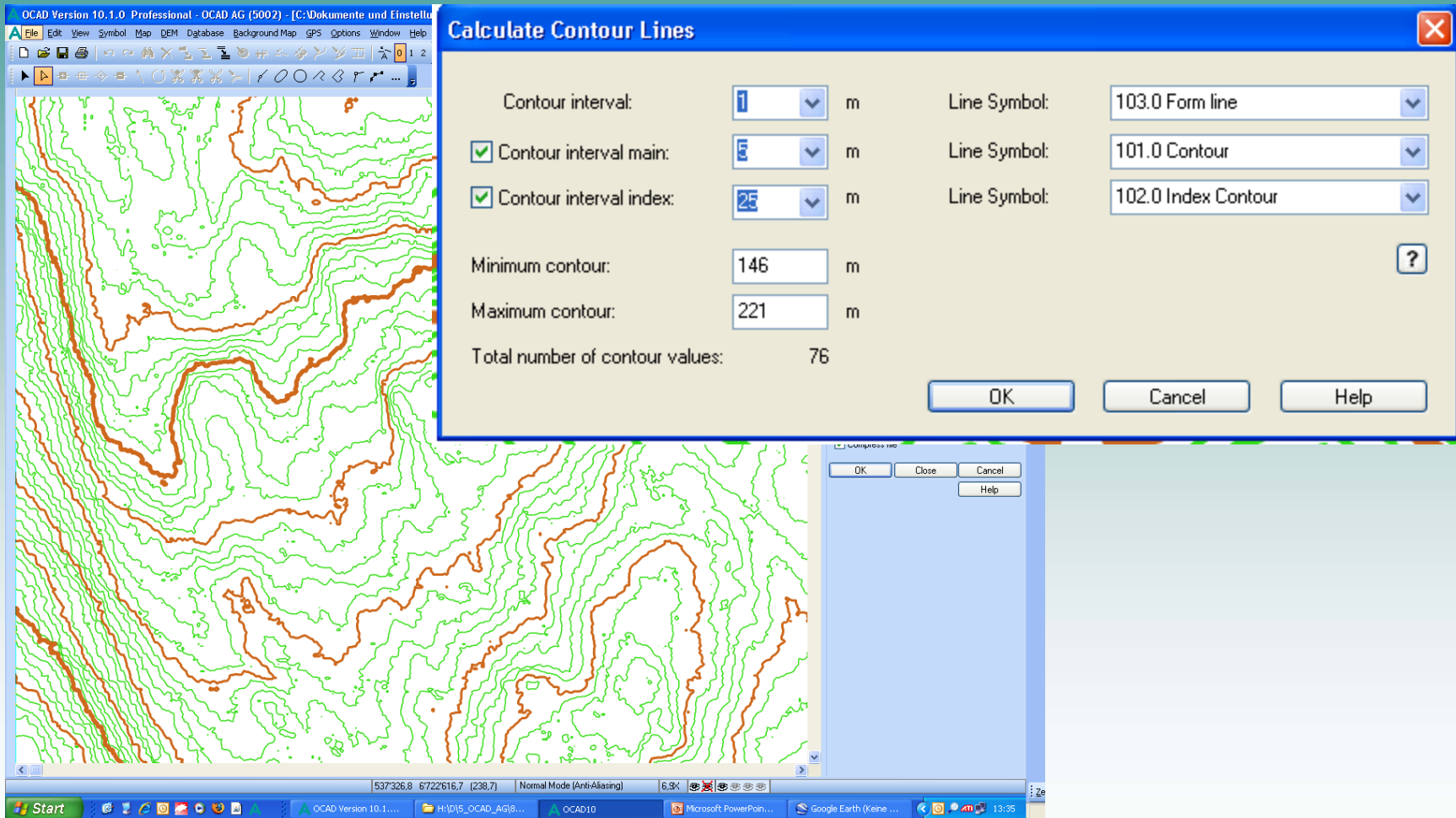
Publicationen
PDF, AI, SVG,
EPS,
JPEG, TIFF, BMP,
GIF,
OIM



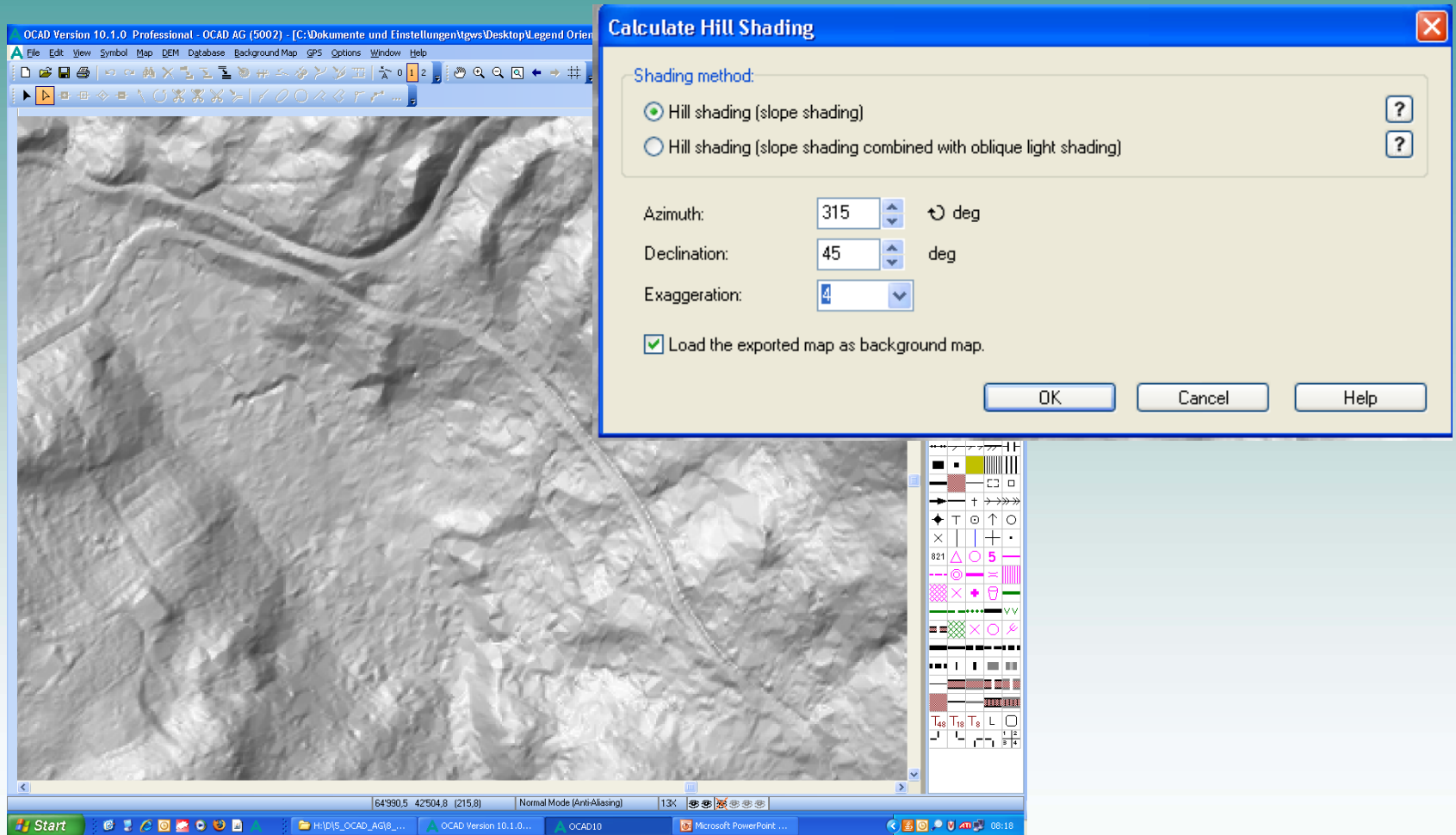
New Functions in OCAD 10 I

- DEM / LiDAR
- Calculation of Contour Lines
- Calculation of Hill Shadings
- Smoothing
- Select Objects by Property
(Remove Dirt)

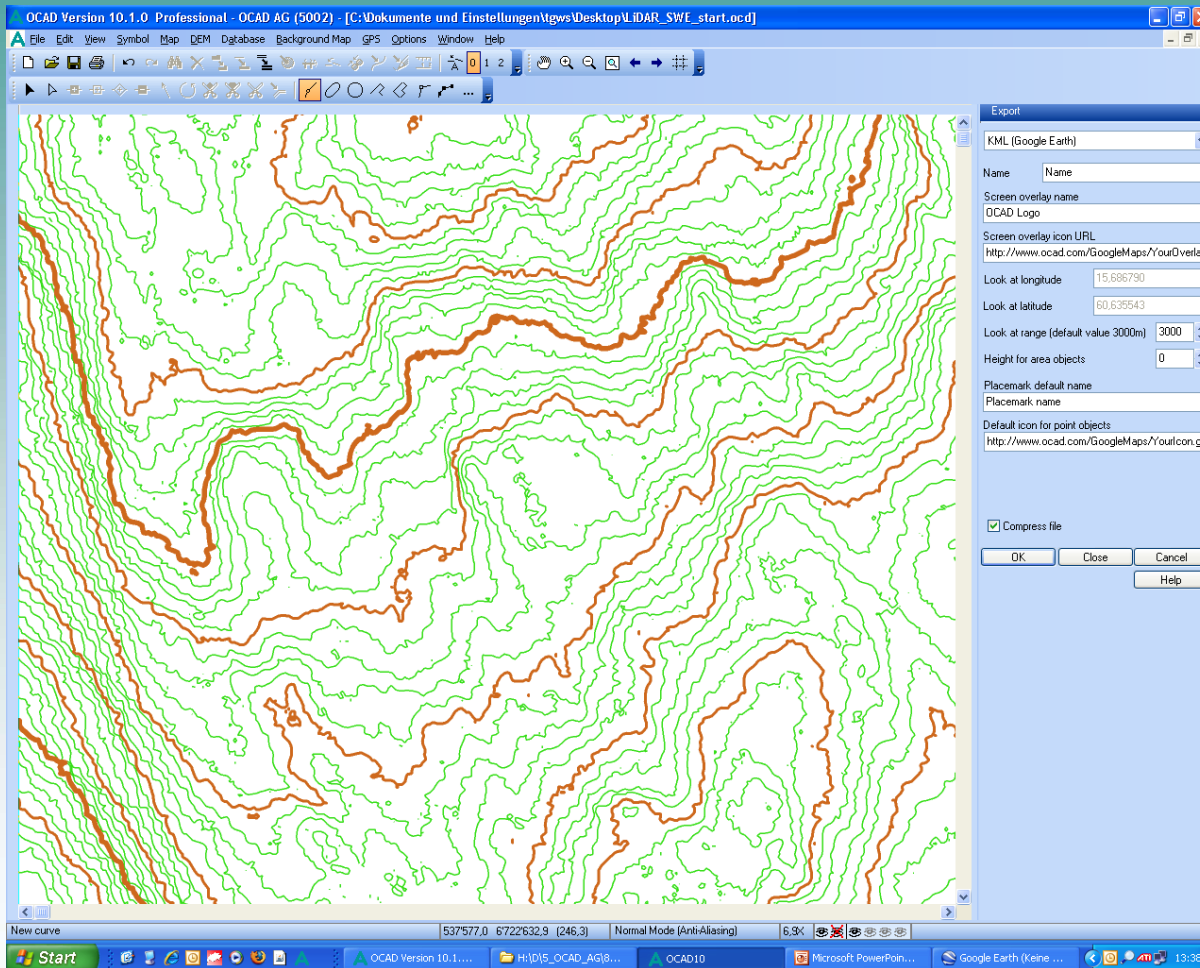
Calculation of Contour Lines



Calculation of a Hill Shading



Smoothing Contour Lines



Remove Dirt

The screenshot displays the OCAD Version 10.1.0 Professional interface. A 'Select Object by Property' dialog is open, and a 'Selected Objects' table is visible. The table lists various line objects with their indices, types, symbols, and properties. The object with index 4147 is highlighted in blue.

Object index	Object type	Symbol	Number of vertic	Elevation [m]	Length [m]	Area [m]
4119	Line object	103.0: Form line	10	229.00	9,83	-
4120	Line object	103.0: Form line	7	229.00	5,60	-
4121	Line object	103.0: Form line	16	229.00	13,39	-
4123	Line object	103.0: Form line	7	229.00	12,07	-
4124	Line object	103.0: Form line	10	229.00	4,41	-
4125	Line object	103.0: Form line	7	229.00	2,88	-
4126	Line object	103.0: Form line	10	229.00	10,63	-
4127	Line object	103.0: Form line	10	229.00	11,09	-
4129	Line object	103.0: Form line	13	229.00	14,39	-
4131	Line object	103.0: Form line	2	229.00	0,00	-
4132	Line object	103.0: Form line	16	229.00	17,43	-
4133	Line object	103.0: Form line	10	229.00	10,93	-
4134	Line object	103.0: Form line	7	229.00	6,17	-
4135	Line object	103.0: Form line	7	229.00	10,82	-
4137	Line object	103.0: Form line	7	229.00	5,76	-
4138	Line object	103.0: Form line	7	229.00	1,85	-
4139	Line object	103.0: Form line	2	229.00	0,00	-
4140	Line object	103.0: Form line	7	229.00	8,88	-
4141	Line object	103.0: Form line	7	229.00	8,76	-
4144	Line object	101.0: Contour	7	230.00	2,63	-
4145	Line object	101.0: Contour	7	230.00	6,05	-
4146	Line object	101.0: Contour	7	230.00	7,22	-
4147	Line object	101.0: Contour	10	230.00	13,37	-
4148	Line object	101.0: Contour	10	230.00	11,71	-
4149	Line object	101.0: Contour	7	230.00	7,62	-

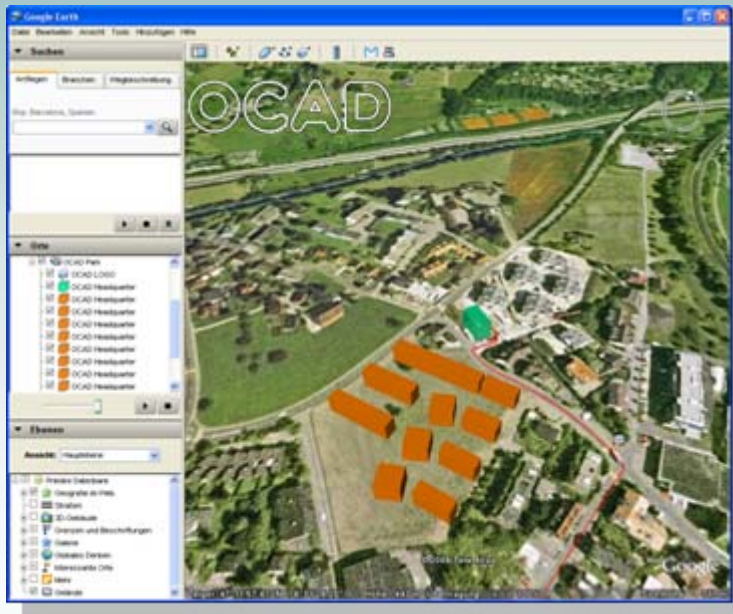
OCAD AG
Mühlegasse 36
CH-6340 Baar / Schweiz
www.ocad.com

New Functions in OCAD 10 II

- Load Background Maps (Non Modal Mode)
- Virtual Gaps
- Real Time GPS
- Export into Google Earth
- Rotate Map Panel
- Mobile Tool Bars
- Export Encrypted Files

OCAD Exports your data into the planet browsers

- Import and Export of GPS-Data (Waypoints and Tracks)



Internet/Navigation
GPX, KML



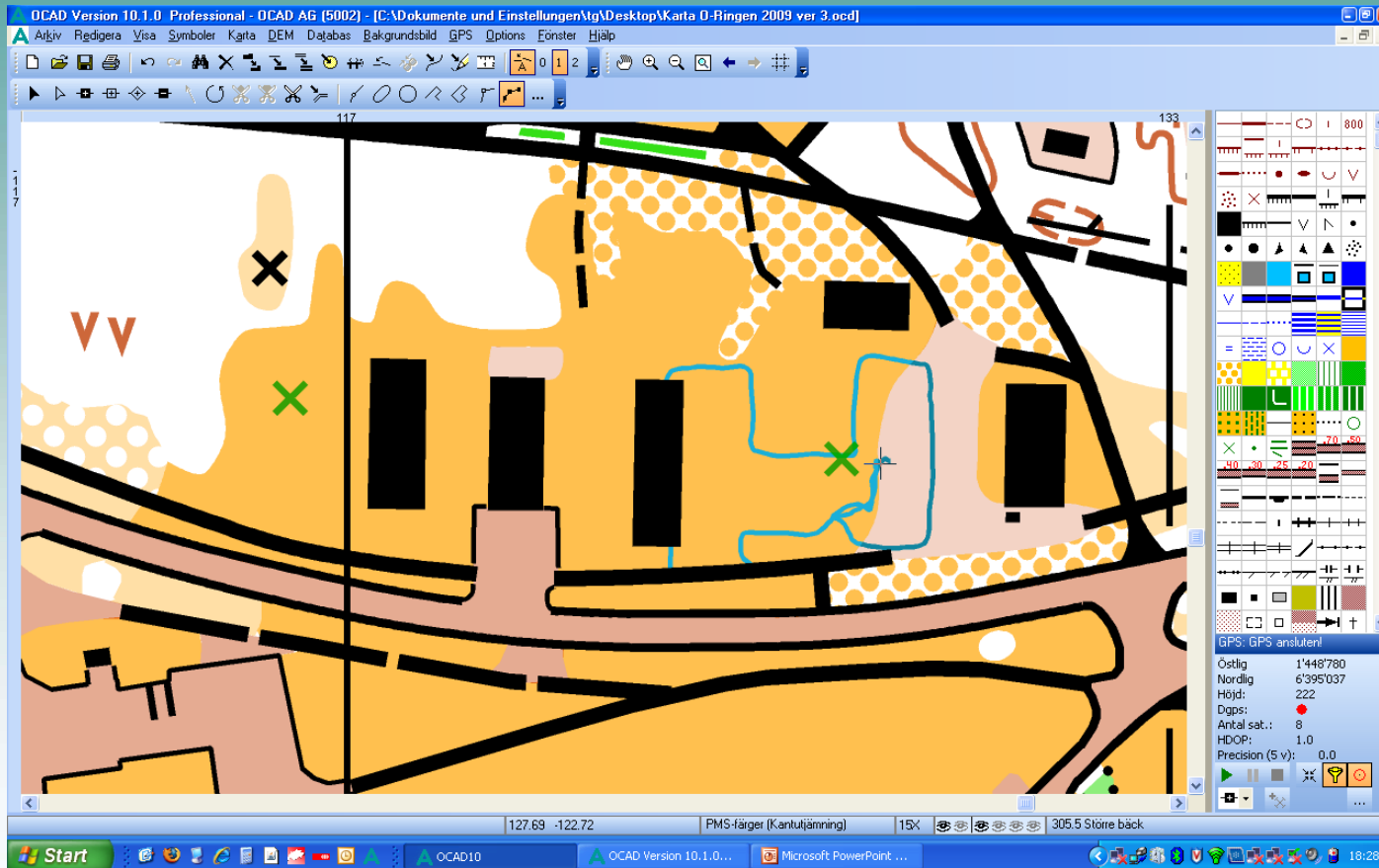
Use OCAD as you mobile mapper!



OCAD AG
Mühlegasse 36
CH-6340 Baar / Schweiz
www.ocad.com

OCAD[®]
the smart software
for cartography

Real Time GPS



Encrypted OCAD Files

Exportera krypterad fil

Lösenord för att öppna dokumentet:

Tillåt utskrift och export

Endast giltig för licensnummer:

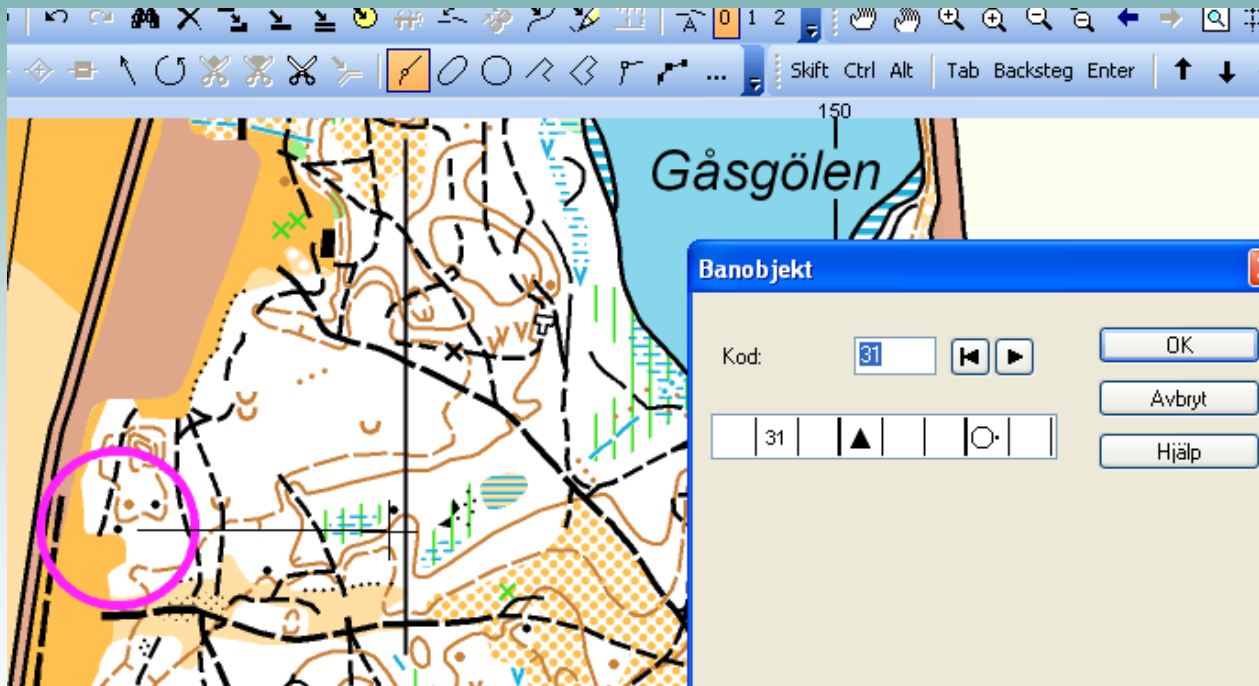
1:	2740__
2:	
3:	
4:	
5:	
6:	
7:	
8:	
9:	
10:	
11:	
12:	
13:	
14:	
15:	
16:	

Kartägarens namn:

New Functions in OCAD 10 III

- Automatic Control Description
- Automatic Calculation of Climb
- Import and Export GPX File
- Profile

Automatic Control Description



Automatic Climb Calculation

The screenshot displays the OCAD software interface for automatic climb calculation. A topographic map shows a pink route with several control points marked by pink circles and numbers 1 through 6. A cyan vertical line is also visible on the map. The 'Kontroll-altitud' window shows a table of elevation data for each control point. The control panel on the right shows the current control point (38) and the calculated climb statistics.

Namn	Höjd	Höjd	Skillnad (m)
	Från DEM	Använd	
51	697,19	697,19	0,00
31	767,93	767,93	0,00
32	808,88	808,88	0,00
33	760,30	760,30	0,00
34	733,49	733,49	0,00
35	814,65	814,65	0,00
36	804,61	804,61	0,00
37	747,19	747,19	0,00
38	729,08	729,08	0,00
39	729,80	729,80	0,00
40	719,88	719,88	0,00

Control Panel Data:

- Current Control Point: 38
- Klasser: (empty)
- Antal löpare: 0
- Bana: H21
- Förhandsgranska: (Navigation buttons)
- Infoga... (button)
- Återställ (button)
- Längd: 1.810 km
- Stigning: 117 / 95 m
- Control List:
 - 1. 33
 - 2. 32
 - 3. 35
 - 4. 31
 - 5. 34
 - 6. 38

Cartografic Workflow

1. Define colors
2. Define symbols
3. Import GIS data (shp or dxf)
4. Assign OCAD map symbols
5. Automatization with CRT-tables
6. «Fine tuning»
7. Publishing

Import your data into OCAD!

- AI (Adobe Illustrator)
- PDF (Portable Document File)
- SHP (Shape-Format)
- DXF (Data Exchange Format)
- SVG (Scalable Vector Graphic)
- GPX (GPS Exchange Format)

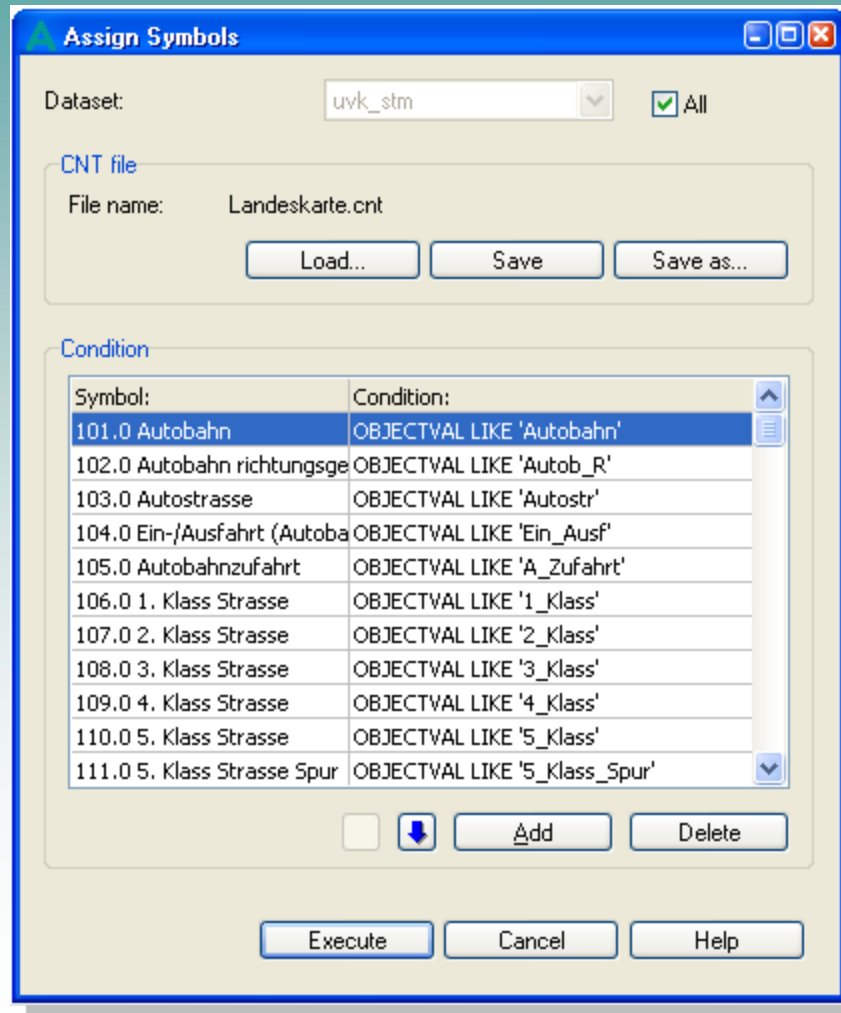
Vector Maps
SHP, DXF,
PDF, AI, SVG



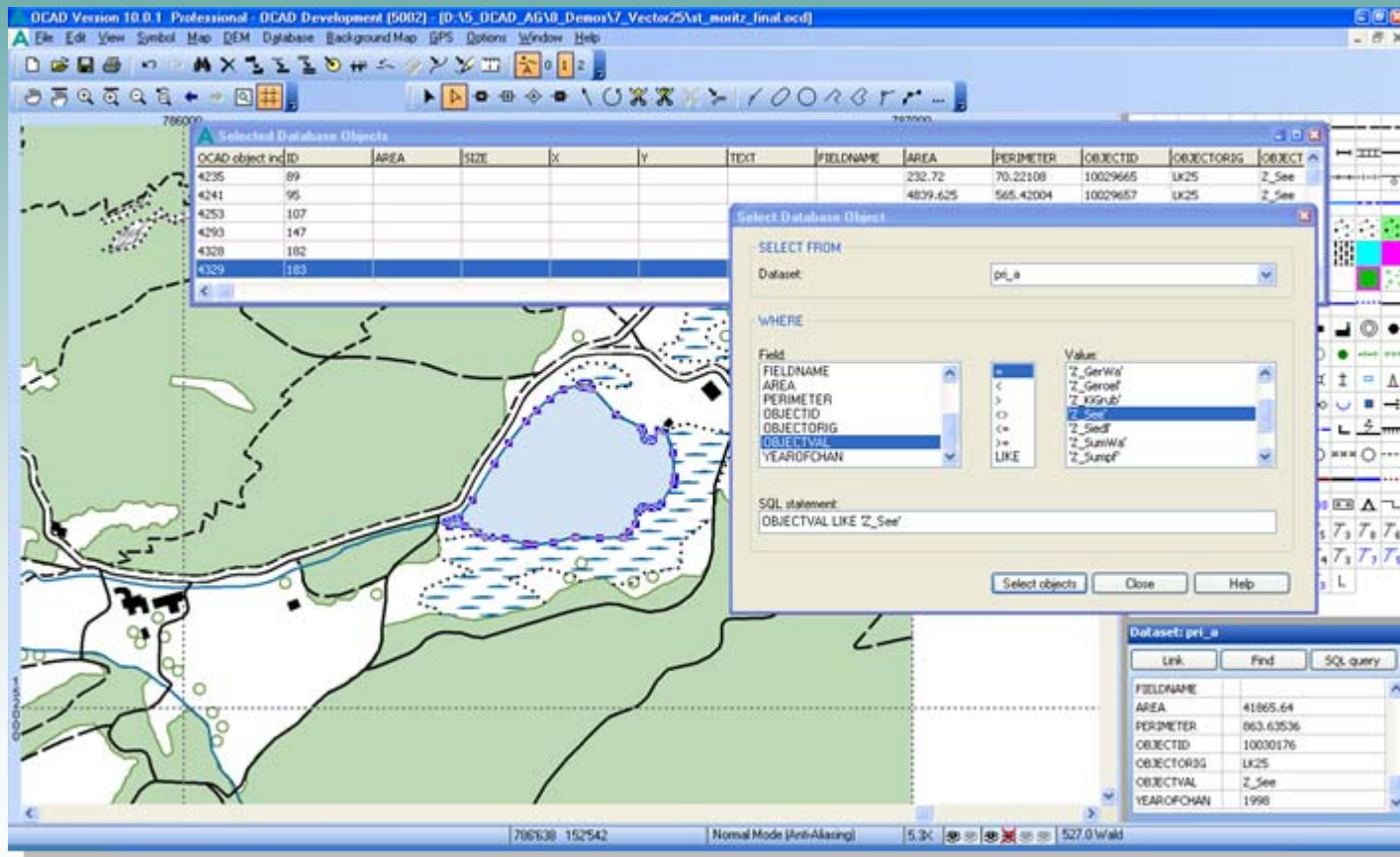
GPS
NMEA, GPX



Assign OCAD map Symbols to your basic Geodata on the fly

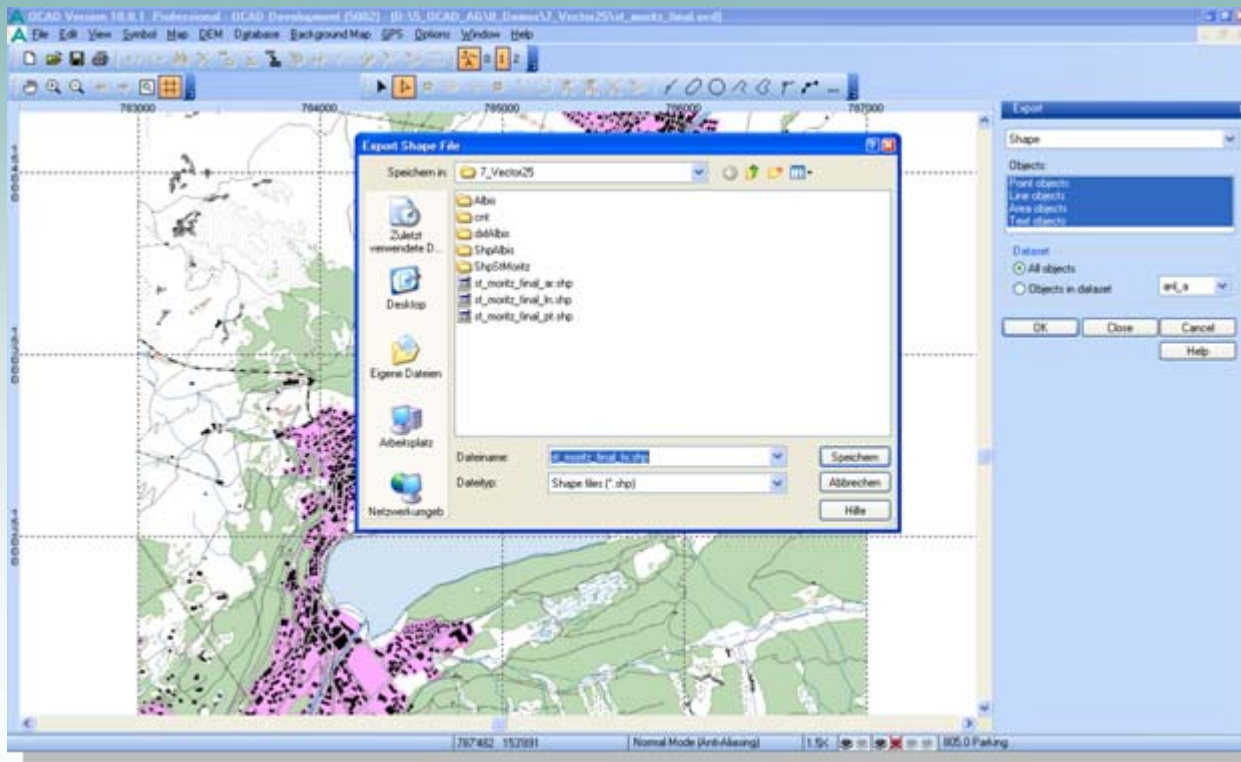


Maintain and enhance you basic database with OCAD!



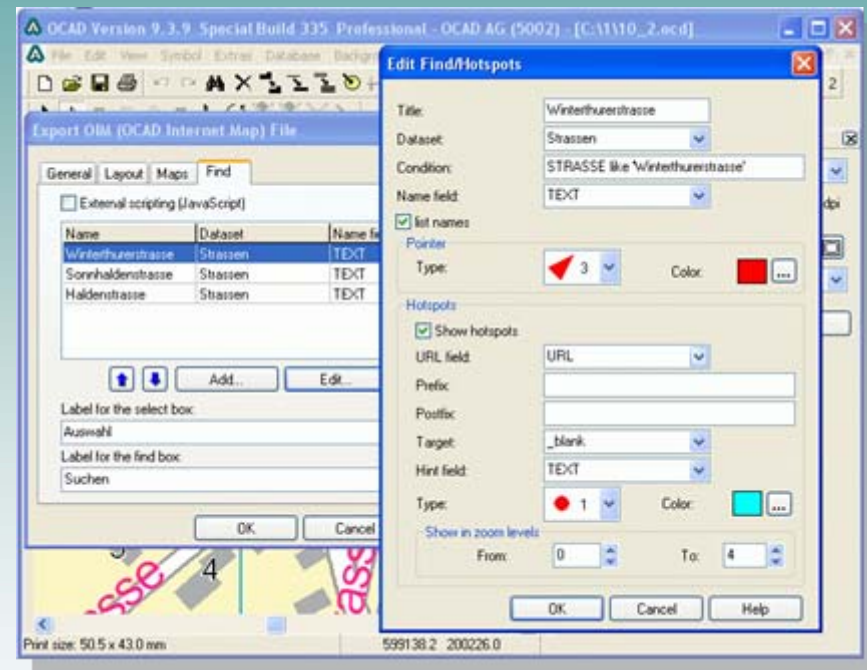
Export Data out of OCAD into GIS

Vektorkarten
SHP, DXF



Make your map interactive!

- Quick build up of the map image due of tiled maps
- Default navigation tools like zoom and pan functions
- Search functions for streets or points of interests
- Hot spots with hyperlink
- Option for Java, Flash or SVG-Environment



OCAD 10 with 5 Editions

OCAD 10 Viewer

OCAD 10 CS (Course Setting)

OCAD 10 Standard

OCAD 10 Professionell

OCAD 10 Trial Version

OCAD 10 Academic/Student



Thank you very much for your attention!