

HISTORICAL THEMATIC MAPS

USING MAPINFO

ANALYSIS OF THE DIFFERENT GRAPHIC SOLUTIONS INCLUDED IN MAPINFO

**Author: Héctor Rodríguez
Universidad del País Vasco**

**ELTE, Department of Cartography and Geoinformatics
December, 2006**

0.- INDEX

1.- Introduction	page 3
2.- Brief description of the counties	page 4
3.- Method	page 7
3.1.- Data collection	page 7
3.2.- Joining DXF files in AutoCad	page 7
3.3.- Creating polygons in AutoCad	page 8
3.3.1.- Checking	page 9
3.3.1.a.- Polygon validation	page 9
3.3.1.b.- Polygon-settlement correlation	page 10
3.4.- Data capture	page 11
3.4.1.- Making a graphic database	page 11
3.4.2.- Checking date	page 12
3.5.- Opening the files with MapInfo	page 13
3.5.1.- DXF files	page 13
3.5.2.- Thematic database	page 15
3.6.- Joining graphic data with thematic database	page 15
3.7.- Combining different polygons from the same settlement	page 17
3.8.- Geocoding	page 18
3.9.- Adding actual work to previously create database	page 19
3.10.- Georeference	page 19
3.11.- Creation of thematic maps	page 21
4.- Thematic maps	page 23
4.1.- Kind of maps	page 23
4.1.1.- Map edition	page 23
4.1.2.- Limitations of MapInfo	page 28
4.2.- Map printing	page 28
4.2.1.- Processing	page 28
4.2.2.- Limitations of MapInfo	page 29
4.3.- Map comparisons	page 30
5.- Used software	page 33
6.- Bibliography	page 34
7.- Annexe 1	page 35

1.- INTRODUCTION

This project is a continuation of the final project made by two former Erasmus students -Irene Antona and Ion Sola- in Budapest.

The project is based on Hungary historic cartography and its goal is to obtain the thematic maps of five counties crossed by the Danube. The databases of three of the counties were elaborated by the two former students mentioned earlier and the databases of the other two counties have been created by me. The different maps show aspects such as population, nationalities and religion. This project belongs to a wider on-going international one which will illustrate all the counties crossed by the Danube from Germany to Romania.

The counties I have worked on are called Komárom and Esztergom and they have been added to Fejér, Tolna y Pest-Pilis-Solt-Kiskun, the three counties selected by the former Erasmus students.

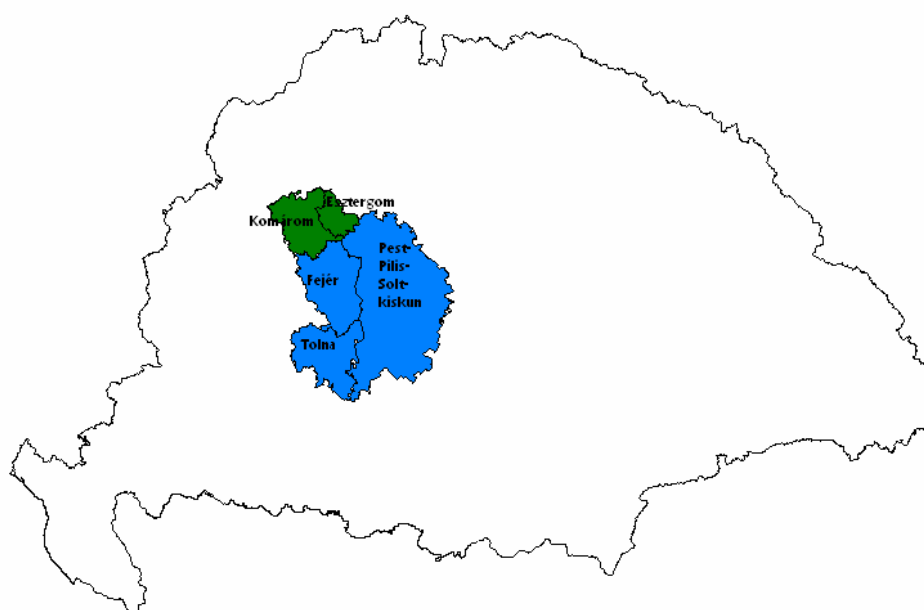
All the data have been obtained from an atlas about Hungary in 1914. This atlas contains the data about population, nationalities and religion which were introduced in a database to be worked with and to be the base for the different thematic maps

The thematic maps will improve the understanding of the data. These way users will be able to see the social situation of the counties in 1914, which will allow different analysis, including the comparison of the situation in Hungary in different years.

The final project has been divided in three parts: a brief description of the counties, the work process to create the different maps and some comparisons of the maps made using MapInfo.

2.- BRIEF DESCRIPTION OF THE COUNTIES

The selected counties were situated in the heart of the historical land of Hungary in 1914 and all of them were crossed by the Danube.



-ESZTERGOM

Area	985 km ²
Number of Settlements	50
Population	72 936
Density of population	74,0 inhabitants / km
Nationalities	77,8 % m(Hungarian), 12,0 % n(German) 9,9 % sl (Slovak)
Religions	83,4 % (Roman Catholic), 13,2 % r (Calvinists), 2,5 % iz (Jews)

Esztergom was the smallest county selected to be included in this project with 985 km². It had the smallest number of settlements with 50. Its borders were Bars in the North, Hont and Nógrád in the East, Pest-Pilis-Solt-Kiskun in the South and Komárom in the West.

-KOMÁROM

Area	2803 km ²
Number of Settlements	93
Population	179 513
Density of population	64,0 inhabitants / km
Nationalities	88,3 % m, 6,1 % n 4,1 % sl
Religions	68,2 % rk, 25,7 % r, 2,9 % ev(Lutherans), 2,6 % iz

Komárom had a the lowest density of population with 64,0 inhabitants per kilometre in 1914. It had a higher percentage of Hungarian nationality with 88,3%. Its borders were Pozsony, Nitra and Bars in the North, Esztergom and Pest-Pilis-Solt-Kiskun in the East, Féjér and Veszprém in the South and Győr in the West.

-TOLNA

Area	3462 km ²
Number of Settlements	123
Population	252 312
Density of population	72,9 inhabitants / km
Nationalities	69,4 % m, 29,3 % n
Religions	69 % rk, 14,8 % r, 12,6 % ev, 2,9 % iz

Tolna was a southern province located in the West side of Danube. Its borders were Fejér in the North, Pest-Pilis-Solt-Kiskun in the East (with the river in the middle), Veszprém and Somogy in the West and Baranya in the South. An important characteristic of this county was the high density of German people, who were the 29,3 % of the total population.

-PEST-PILIS-SOLT-KISKUN

Area	10 288 km ²
Number of Settlements	219
Population	829 192
Density of population	80,6 inhabitants / km
Nationalities	86,3 % m, 9,5 % n, 2,9 % sl
Religions	71,3 % rk, 17,2 % r, 7,7 % ev, 2,8 % iz

Pest-Pilis-Solt-Kiskun was the biggest province of the selected ones with an area of 10 288 km² and was also one of the biggest in the whole land of Hungary in that period. Its borders were Nógrád, Heves and Hont in the North, Jász-Nagykun-Szolnok and Csongrád in the East, Bács-Bodrog and Baranya in the South and Tolna,

Fejér, Komáron and Esztergom in the West. Pest-Pilis-Solt-Kiskun was also the county with the highest number of settlements in the working area.

-FEJÉR

Area	4009 km ²
Number of Settlements	104
Population	214 045
Density of population	53,4 inhabitants / km
Nationalities	85,7 % m, 11,1 % n, 2 % sl
Religions	68,2 % rk, 26,2 % r, 3,1 % ev, 2 % iz

Féjer was the province with the lowest population density (53,4 inhabitants per kilometre). It was located on the left hand side of the Danube and it bordered in the North with Komáron, with Pest-Pilis-Solt-Kiskun in the East, with Tolna in the South, and with Veszprem in the West.

3. METHOD

In the followings sections I explain the different steps followed in the work process. I illustrate how I obtained the data, how I worked with the data to create shapes and to create a database, how I added the previous work and how I created the maps.

3.1.- DATA COLLECTION

The first step of the project was to compile the different data to be used. My main sources were: First the Historical Atlas about Hungary in 1914 was, which was borrowed from the library of the Department of Cartography and Geoinformatics. The name of the atlas was “A Történelmi Magyarország Atlasza és Adattára 1914”.

Secondly, files with the territorial partition of Hungary in 1914 and the information in the atlas were needed. Prof. Zentai Laszlo was asked for some DXF files - which had been converted from the original CDR files - representing the maps used in the atlas. However, there was a problem. When you convert CDR files into DXF files, the line width become as small as possible and the polygons are divided in several open lines, so those maps couldn't be used and I had to use the files the former students had worked with. In those files the polygons were closed and the lines were segments of lines. So to make the final map I had to join different files of the different layers and get them together.

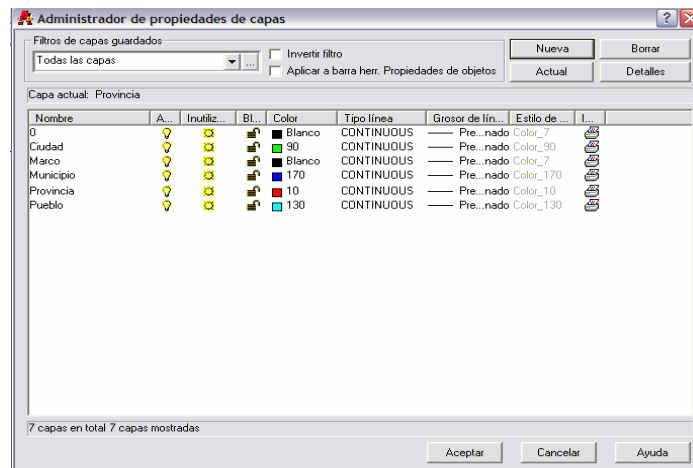
3.2.- JOINING DXF FILES IN AUTOCAD

The following step was to open the DXF files in AutoCad to join the different layers and to make the polygons. First the file containing the province's contour was opened and then all the other files to finish with the file with the settlement's contour.

When I tried to open the DXF files, I found out that AutoCad wasn't able to load the files because the software found them incomplete. The solution was to copy the files again and then loading them was possible.

Then I had four DXF files that I had to edit in AutoCad to create my work area. Once I had made five layers to compose the map, the first step I did in AutoCad was to open the counties file and erase all the lines except the lines belonging to Esztergom and Komárom. These lines were saved in a new layer called “Provincia”.

This file also contained a frame, which was saved in another layer called “Marco”. This frame was used to join this work with the previous one. It was saved in DWG format. After that the town file was opened and all the lines except the lines belonging to the selected counties were erased. This was saved in a new layer called “Municipio” and in a new DWG file. Finally, I did the same with the settlements and the cities file.



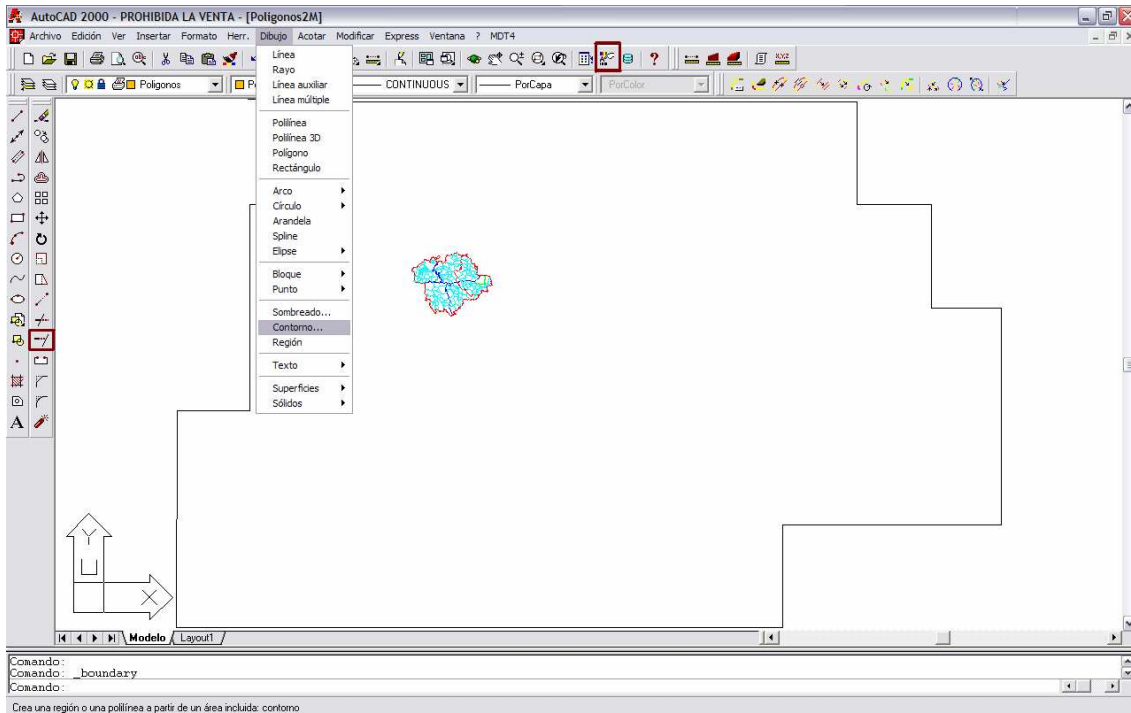
3.3.- CREATING POLYGONS IN AUTOCAD

Once I had the different layers with the polylines of the counties I was going to work with, I made the settlements and the cities polygons.

First, I opened the last DWG file named “Ciudades” which contained all the layers. I made a new layer called “Poligonos” and made it current to make the new polygons there. To make the polygons was very easy; I selected “Draw/Boundaries...” command from the Draw upper menu, I had to click in the middle of the polygon that I wanted to make.

Nevertheless, I had only one problem when trying to make one polygon. After zooming it I found that the polylines didn’t close the polygon. Consequently, the software couldn’t make the polygon. The solution was to extend the line using the “Extend” command located in the Draw bar.

With the “Ciudades” file the process was different because they were polylines. The process to be followed with polylines is to select them and click in the Properties button of the upper menu, where the option “No” in the “Closed” box had to be changed to the option “Yes”.

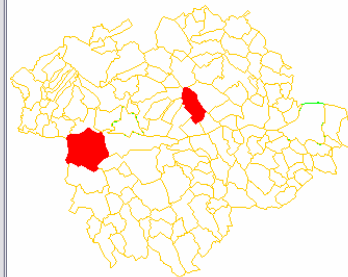
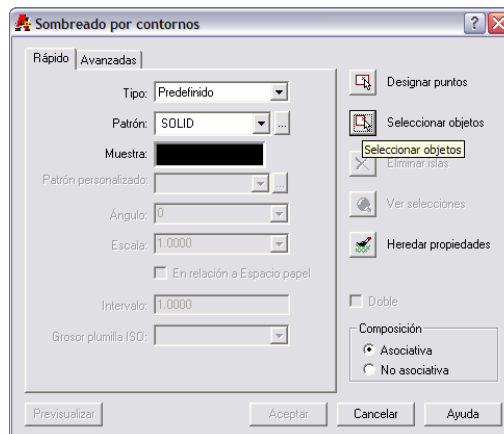


3.3.1. CHECKING

After all the polygons were created, two tasks had to be done: to check that all the polygons were valid and to check that all of them existed and each polygon represented only one settlement.

3.3.1.a.- Polygons validation

First, I checked that all the polygons had been made correctly. To do it, I filled all the polygons with a colour. I did it selecting “Draw/Hatch...” in the upper menu. There I chose the hatch and later I selected the polygon. If the polygon was valid, it was filled with colour. I did it with all the polygons, one by one.



3.3.1.b.- Polygon-settlement correlation

After the last step, I had all the polygons filled with colour. The next step was to check that all the polygons in the files were the same polygons that I had on the original map. To do it, I photocopied the map from the atlas and every time I erased the colour from one polygon, I checked it on the map, marking and numbering the settlement. The conclusion of this work was that the number of settlements on the map and in the files was the same (139). As all the polygons were valid and each one represented only a settlement, I saved this map to a DXF file version 12 to be loaded later into MapInfo.

3.4. DATA CAPTURE

The data were obtained from the Atlas “A Történelmi Magyarország Atlasza és Adattára 1914”. This Atlas covers the administrative situation of Hungary in 1913. The numerical statistics are based on the national census data of 1910. The thematic information I have processed is the number of inhabitants and the ethnic and religious data of each settlement.

3.4.1.- MAKING A GRAPHIC DATABASE

First, I made tables with the Excel software. The structure of the tables were similar to the tables used by the former students had used. I made two tables, one table for Esztergom and other one for Komárom. The distribution of the data was:

- Name of the settlement
- Settlement code
- County code
- Population
- Nationalities, Hungarian, Germans, Slovaks, Romanian, Gipsy...
- Religions, Roman Catholic, Greek Catholic, Greek Orthodox, Lutherans...

In the first column, there were the names of the settlements in Hungarian and some of the characters of the Hungarian alphabet do not exist in my laptop. Besides, the keyboard was configured for the Spanish language and some consonants and vowels were either in different position or not included. The solution was to change the keyboard configuration to Hungarian using the Windows Language tool and to put some new characters in my keyboard with some sticks.

The second column had the code of each settlement. This code was necessary to relate the map to the thematic data. I kept the same way of encoding used by Erasmus students last year, which was formed by three letters and three digits. The former referred to the county and the latter to the place each settlement occupies in alphabetic order in each of the two counties.

The third column includes the county code. This code made easier the work with a database.

The next column records the number of inhabitants.

The other columns have data about nationalities and religions. The same fields that appeared in the gazetteer of the Atlas have been recorded. The ethnic groups recorded were Hungarian, German, Slovakian, Romanian, Russniak, Croatian, Serbian, Gipsy, Wend, Polish, Greek, Italian, Bunievatz, Socatz, Czech and Moraviar and Bulgarian. Meanwhile, the religious groups recorded were Roman Catholic, Greek Catholic, Calvinist, Lutheran, Greek Orthodox, Unitarian or Jewish.

	A	B	C	D	E	F	G
1	Name of the	Village code	Province cod	Population	Nationalities	n	sl
2					Hungarians	Germans	Slovakians
3	Bajna	esz001	ESZ	2099	2079		
4	Bajót	esz002	ESZ	1430	1420		
5	Bart	esz003	ESZ	1168	1155		12
6	Bátorkeszi	esz004	ESZ	3144	3116		
7	Béla	esz005	ESZ	535	532		
8	Bény	esz006	ESZ	1557	1541		
9	Búcs	esz007	ESZ	1584	1584		
10	Csév	esz008	ESZ	1773	160	18	1587

It was easy to work with the data from the atlas with this distribution because at the end of the atlas you can find all the Hungarian settlements with this information in the same alphabetic order:

- Name of the settlement.
- Code of letters and numbers for locating the settlement in the map.
- Name of the county where is located.
- Name of the district.
- Actual name of the settlement and the country to which belongs.
- Number of inhabitants of the settlement.
- Number of people of each nationality.
- Number of people of each religious group.

Sometimes a settlement which was located in Hungary in 1914, it is located in another country nowadays. In these cases the name can have changed and be written in the language of the new country to which it belongs

This is an example:

Viszka 35B-C2 Hunyad vm. Marosillyei j. (Visca)
1260 18m 1237ro 1243go

The settlement was named Viszka and can be found on the map sheet no. 35B of the Atlas (field C2). The settlement administratively belonged to Marosillyei District of Hunyad County. Visca is the present name and now it belongs to Slovakia. The settlement had 1260 inhabitants in 1910: 18 people claimed to be Hungarian and 1237 people to be Romanian, while the rest of the inhabitants belonged to other ethnic groups. From the total number of inhabitants, 1243 people claimed to be Roman Catholic according to the census of 1910.

Before starting to structure the data, I photocopied the pages of the atlas that contained all the data previously explained. Those pages contain all the Hungarian settlements in alphabetic order, and I had to find the settlements belonging to the two selected counties. The solution was to read all the settlements and underline the settlements of Esztergom in one colour and the settlements of Komárom in other colour.

When I finished underlining all the settlements I began to introduce the data into two tables, one for all the settlements of each county in alphabetic order. As it is best to have one table which contains the settlements of both counties, another table was made where both above mentioned tables were pasted and all the settlements ordered in alphabetic order.

3.4.2.- CHECKING DATA

As I had to find the settlements belonging to my counties among all the Hungarian settlements, the possibility of making a mistake was high. To avoid this problem, I decided to check on the data.

First, when I found the name of a settlement I underlined it and I counted it on another sheet of paper. This way, at the end of the search, I had counted all the underlined settlements. The result of this check was that I had 141 settlements and only 139 polygons, so it was a mistake in the database. Later while I was filling the table with the settlement's data I looked for the settlement in the map and I marked it.

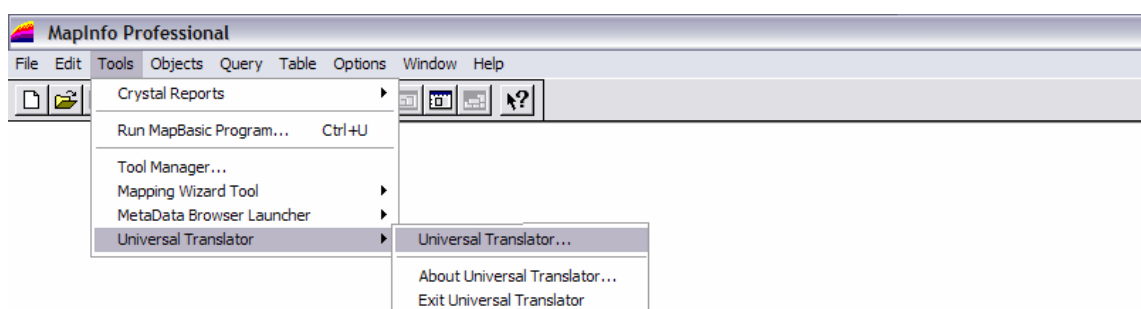
With this check I could see if any settlement was missing or if one settlement was counted twice. The result of this check was that one town contained three settlements, so the three settlements were joined. I chose the big settlement, erased the others and added the data of the erased settlements to the remainder settlement. Then I had 139 settlements with 139 polygons.

3.5.- OPENING THE FILES WITH MAPINFO

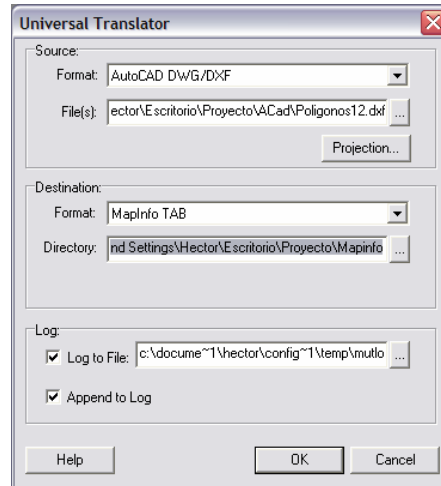
Once the database was completed and the polygons had been done in AutoCad and saved as DXF files, these files had to be loaded in MapInfo and geocoded with the database. The first step of this process was to open the DXF maps and the database in MapInfo.

3.5.1.- DXF FILES

I opened the file created in AutoCad. This was possible with the tool “Universal Translator” that MapInfo has in the “Tool” menu.



Loading this tool a common dialog appears with different options. I selected the file to be loaded and its format. Afterwards, the place where I wanted it to be saved and the kind of format.

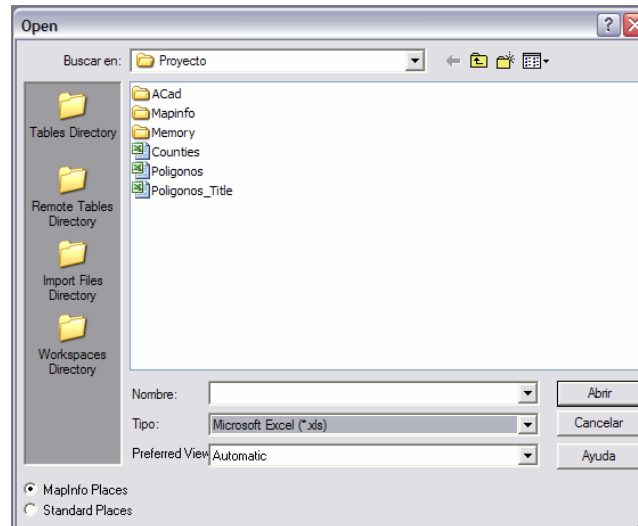


When I finished this process I had the file loaded. During the loading process two files are created automatically, one file with MAP extension and the other file with TAB extension. This last file contains a table with a column called "AutoCad elevation", which doesn't have data because the AutoCad map was produced only in two dimensions.

I realised that I had two files, one with MAP and the other with TAB extension one for each layer only after the loading had taken place. The most interesting files were the files belonging to the polygons layer. Then I made the rest of the layers invisible with the layer control. I had a problem with the polygons because I had forgotten to create the polygons of the cities. As it is easier to work in AutoCad than in MapInfo, I corrected my mistake in AutoCad. I transferred the "Ciudades" layer into the "Poligonos" layer. Later I repeated the last steps and then I had all the polygons in MapInfo.

3.5.2.- THEMATIC DATABASE

The next step was to load the Excel file selecting “File/Open...” in the upper menu. When I clicked this option one common dialog appeared:



In this window I selected the kind of file to open, Microsoft Excel (*.xls) and the last table made, which contained the data of both counties.

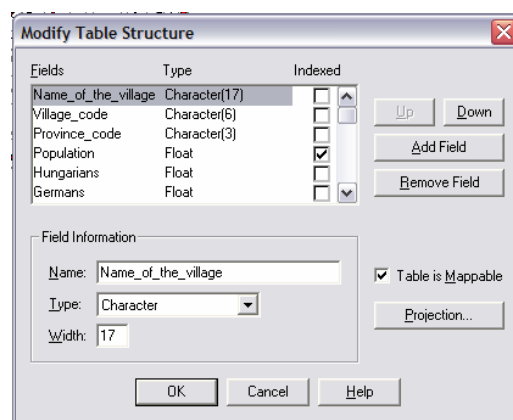
3.6.-JOINING GRAPHIC DATA WITH THEMATIC DATABASE

The objective of this step was to have a polygon joined to one row of the table so that, when you select the polygon on the map, one row of the table is also selected. The row to be selected should be the row belonging to the same settlement.

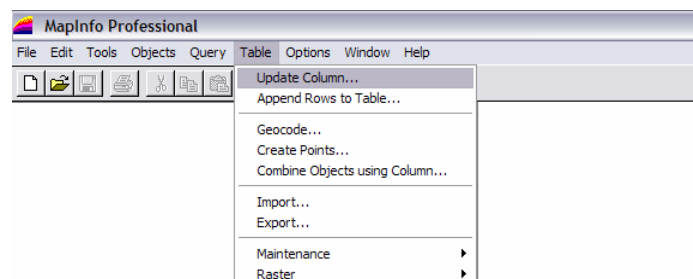
When I selected one polygon of the map, one row was also selected but it didn't contain any information. I needed to transfer the information from the Excel table to this table. One option was to write all the information again, settlement by settlement. But I had a lot of settlements with numerous fields containing information, so I rejected this option. Instead I decided to copy the data from one table to the other table. I needed one common column and I only had one column in the table of the map which wasn't useful. Then I made another column, I clicked in “Table/Maintenance/Table Structure...” in the upper menu, where you can add columns or remove them. I added a new column with the same characteristics and the same name that the common column I needed. This column was called “Village_code”. This column is alphanumeric with a length of six characters. When I had made it, I

had a new column without information. The next step was to rename the polygons with the name of the settlements. Although this step was tedious due to the quantity of names to be included, there was no other way of doing it. I looked in the paper map for the settlement corresponding to the polygon, copied the settlement code and wrote it in the new column in the selected row.

After this when I selected one polygon from the map one row with the settlement code was selected at the same time. The next step was transferring all the data from the imported table to the map table. I made news column, following the same steps that I have described before. I made as many columns as the Excel file had and I wanted to copy. The columns had to have the same characteristics, the same name and the same length.

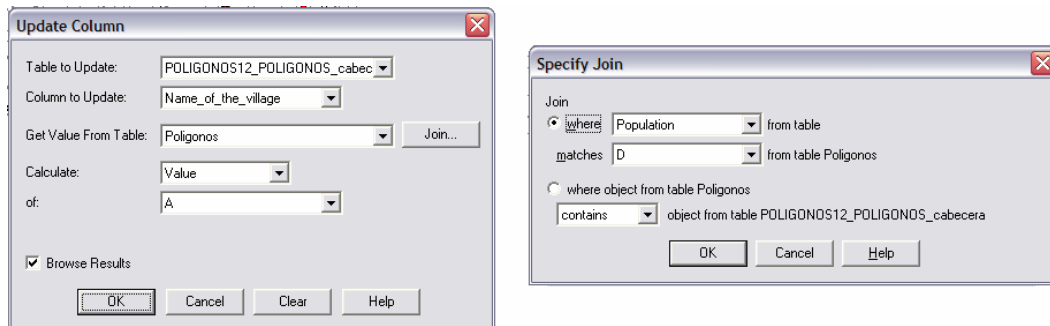


Once all the columns with the same characteristics had been made, I copied the different fields. I had to copy column by column because MapInfo can't copy all the columns at the same time. As I had two columns in common the fields were copied correctly. All the data belonged to the corresponding village. I did it selecting "Table/Update Column..." in the upper menu.



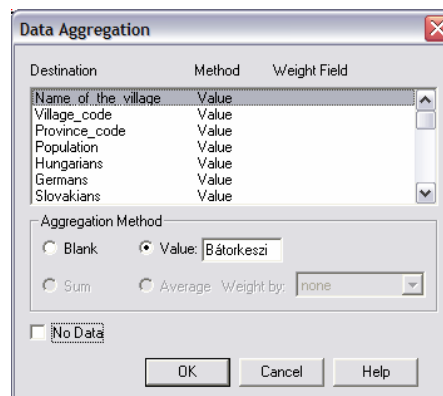
With that selection, MapInfo shows a window where I selected the table to be updated and the column to be filled. Then I selected the table I wanted to copy the information from and the way to copy that information. I wanted to copy the

information with the same value so I selected the “Value” option. In the “Join” option I selected the common column. This column allows all the information to be copied correctly, so the data belong, to the correct settlement.



3.7. COMBINING DIFFERENT POLYGONS FROM THE SAME SETTLEMENT

I had three settlements which had two polygons. For example the settlement Héteny contained two polygons. I had to join the two polygons, so that when any of them was selected, the two polygons would be selected. First, I made the layer editable and I looked for the settlements that were repeated. I selected these polygons and in the upper menu I clicked on “Objects/Combine...” In the next window I could choose if I wanted to add, to multiply etc...the data. As the data were from the same settlement I chose the “Value” option. This option keeps a common value of the data in all fields.

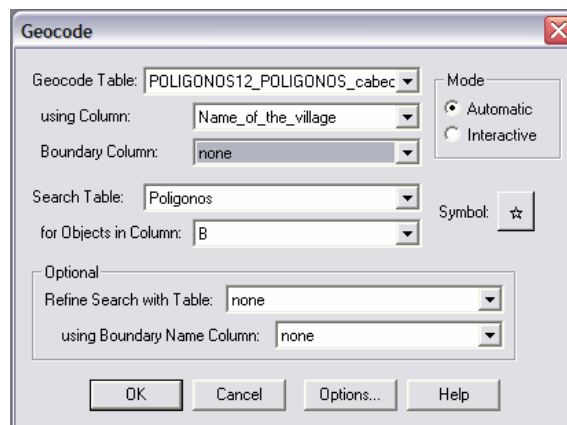


Before I had had two rows for the same settlement, and later I had one row selected every time two polygons were selected.

3.8.- GEOCODING

Geocoding is the most important step. This step would permit me to have one column of the table in common with the thematic map by using some codes. The “Village code” was used again.

I clicked in “Table/Geocoded...” in the upper menu and one window appeared. In this window I chose different options such as the table to geocode (this table was the table that had been made at the moment of importing the map), the reference column and the table where the software will find the data to geocode (the imported table) and the column with a relation. Geocoding can be either automatic or interactive and I chose the automatic option.



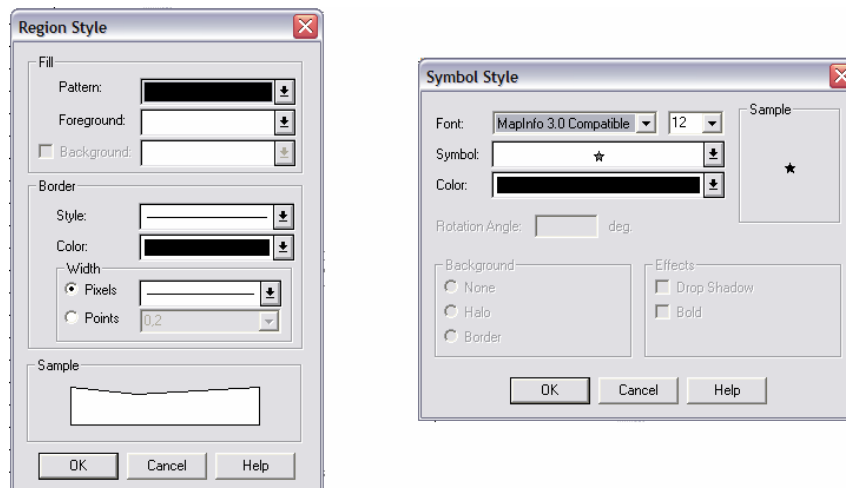
When I clicked the Ok button, the software began the processing. After finishing this process, it showed the number of geocoded polygons in a window and I had 139 polygons geocoded. The process had been correct. However I had found out there were errors, I would have had to repeat interactively the process.

3.9.- ADDING ACTUAL WORK TO PREVIOUSLY CREATE DATABASE

Next I had to open the MAP file done by the previous year students. I selected “Field/Open...” from the upper menu and I chose the file. When the file was to be opened, the software identified the same codes because that work was also geocoded and this way, the previous year’s work added to my work.

The two works were in the same window and joined, although the tables from the different works were apart but this it didn’t matter.

Finally, I selected the same appearance options for both works. I selected the same type of line, the same colour, the same size, the same symbol... I did it selecting “Options/Region Style... or Options/Line Style...” in the upper menu.



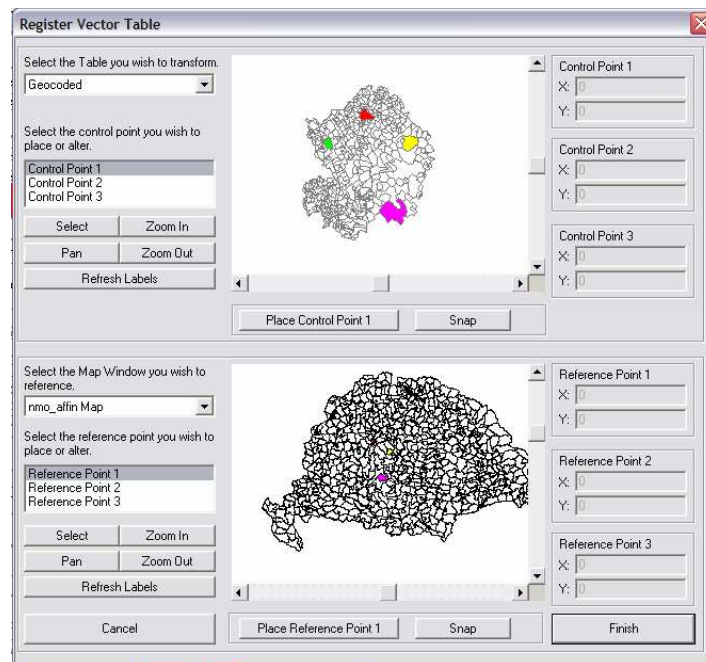
Before doing this last step, I had to select all the polygons or all the symbols that I wanted to change. Besides I had to make the layer editable. All of this was done following the same steps that I have previously described.

3.10.- GEOREFERENCE

In this step I endowed my work with real coordinates. I only needed a Hungarian map with coordinates. With the help of MapInfo I made a bidimensional simple transformation. To do this transformation it is necessary to have a scale change, a translation and a rotation.

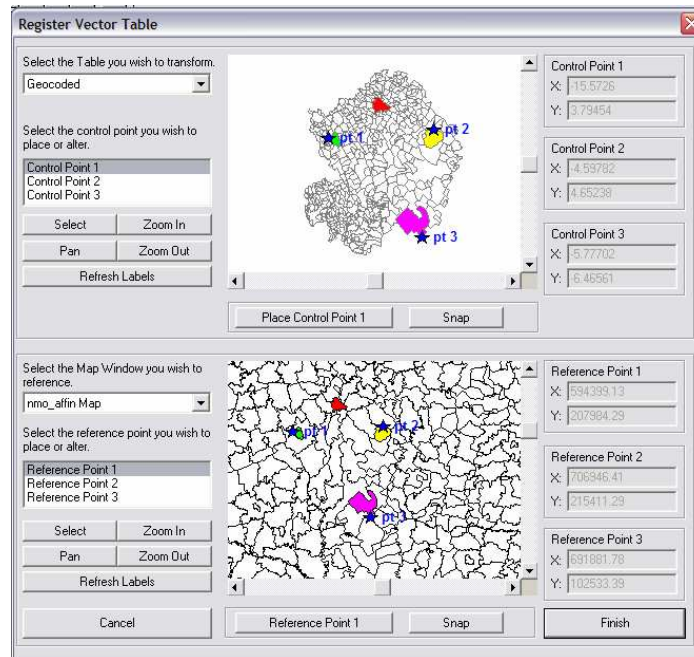
I asked Prof. István Elek for help. He explained the process and gave me both MapInfo version 8 and the Hungarian map with coordinates.

First I installed the version 8 of MapInfo. This version contained the tool to do the georeference. This tool appeared in the 7.8 version of the software. At that moment with the new version, I loaded the tool “Register Vector Utility”. The steps to load the tool were similar to the steps explained to load “Universal Translator” tool. When I had the tool loaded I used it. I selected “Tools/Register Vector.../Register vector map...” from the upper menu and a window appeared.



In this window I selected three control points, three points in the map without coordinates and the same three points with coordinates. I coloured the towns that contained the control points because this was the best way to recognize the place of the control points in the map. These towns had to be as remote as possible and form a triangle so the transformation is done as correctly as possible. Besides, the towns had to have some characteristic point to place the control point. This is why the search wasn't easy.

When I selected the control points in both maps, in the window is shown the different coordinates of six points. The next figure shows it.

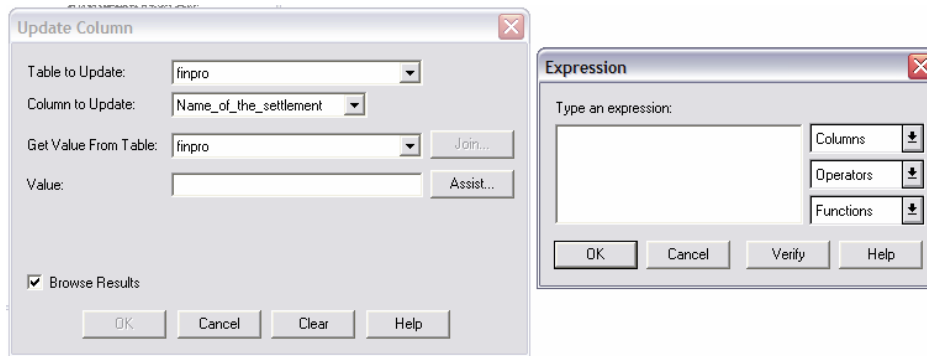


This step was repeated with the map of my work. When I georeferenced the two works, both were joined perfectly because both had the same coordinates. I have to mention that the process wasn't precise and exact because the maps were different, the contour of the towns wasn't similar and the zoom didn't permit to work in an ideal scale. However for the context of the work the results were valid.

3.11. CREATION OF THEMATIC MAPS

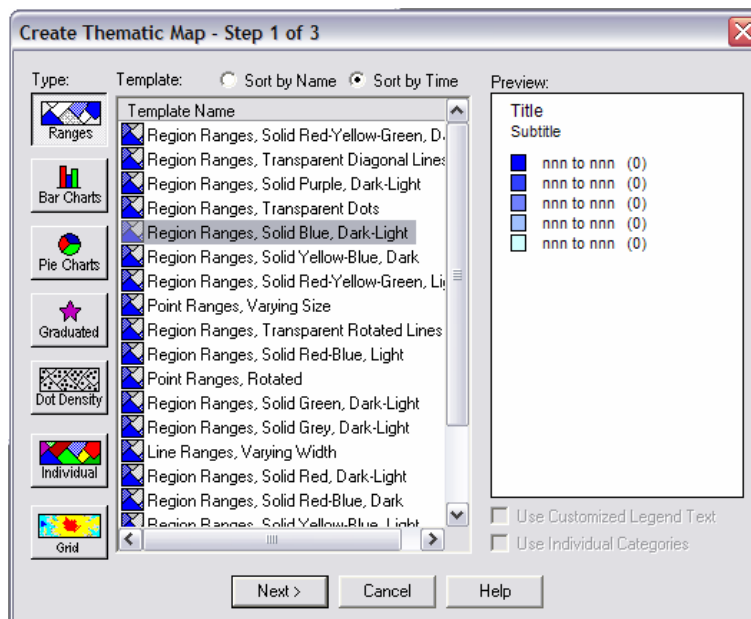
When I had georeferenced the work, the last step was to make thematic maps. MapInfo can make some kinds of predetermined thematic maps.

Before making thematic maps, I made new columns in the tables to prepare data to make thematic maps. I created two columns. The process was similar to the process explained previously. I selected "Table/Update Column..." to fill the columns. There I selected the table that contained the column to fill and the table that contained the data. As these two tables were the same, the software allowed me to select one expression which could fill the table. In the first column I introduced the density of population. In the expression I selected the column "Population" divided by area. It was possible to introduce the area because the map had coordinates.



In the second column I introduced the majority’s religion. In this case the expression was if one religion had more people than other religions. I compared the majority religion. The software result was true or false. Afterwards, manually, I changed and compared all the religions settlement by settlement in the map.

With all the data I made different thematic maps. I selected “Map/Create Thematic Map...” from the upper menu. In the window shown I chose the different options to represent thematic maps.



4.- THEMATIC MAPS

I have made different thematic maps using the data of the database. Therefore the maps show data like inhabitants, religion, density of population, nationalities...

4.1.- KIND OF MAPS

There are numerous kinds of thematic maps, choroplets, surface maps, cartodiagrams... I have made thematic maps with MapInfo. I have made the maps as best as MapInfo allows.

4.1.1.- MAP EDITION

MapInfo has an option in which the software, with the database, is able to make different thematic maps, as I have explained previously. MapInfo permits the creation of element maps, surface maps and cartodiagrams in different ways.

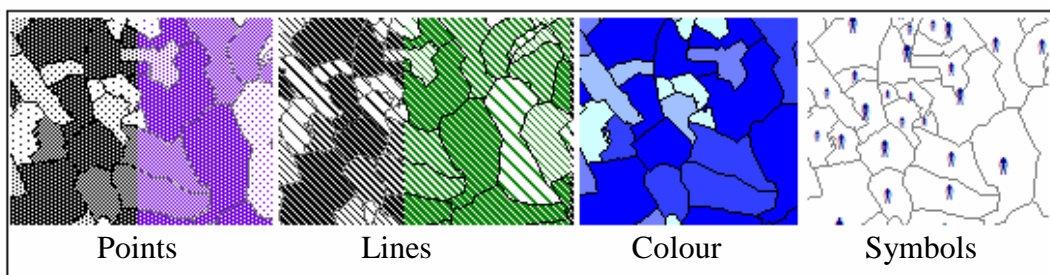
I can't make all kinds of thematic maps offered by MapInfo using the actual data. The reason is that the map representation would be wrong. For example, surface maps cannot be done because we don't have the appropriated data to create them. All the data that I had are not continuous and to make surface maps continuous data are needed. In this project the data was stored separately for each settlement. So there was no continuous change like temperature or atmospheric pressure data which would be continuous data.

I made maps about inhabitants, religion and nationalities. I made alternative maps for the different possibilities such as cartodiagrams, choroplets.....

I have made maps with inhabitants data that are discontinuous, so I had to represent those data in element maps. I decided to choose different shades of colour. The darkest tone shows the settlements with more people and the lightest tone the settlements with less people. Also I represented it in a map with points. In this map, the settlements with more inhabitants were represented with points distributed more densely. On the contrary, the settlements with fewer inhabitants were represented with less point. The change between both extremes was gradual so the map shows the settlements with more people with more points. I did the same but I changed points to

a hatch using diagonal lines. The high range had more lines than the low ranges. The change was gradual. In these two last examples, MapInfo coloured points and lines with black colour as the default colour. I changed the black to another colour. Last I made one map with gradual symbols. The symbol used was the draw of a person. In the villages with more people the symbol is bigger than in the villages with less people. In this case, MapInfo didn't make different ranges, it used a gradual size. The graduation was made by MapInfo. MapInfo allows different kinds of graduation, logarithmic, constant or square root. I chose logarithmic. This method isn't the most exact but it is the best way to represent the information in this map. I have forgotten to write that in my work I had the village of Budapest. Budapest has a huge number of people in comparison with the other settlements. This is a problem because in the calculation done with MapInfo the results are distorted. Besides I had the last year work in another table, so I had two tables with two ranges. For these reasons I had to change the ranges given by MapInfo for another ranges. The previous and the final ranges were:

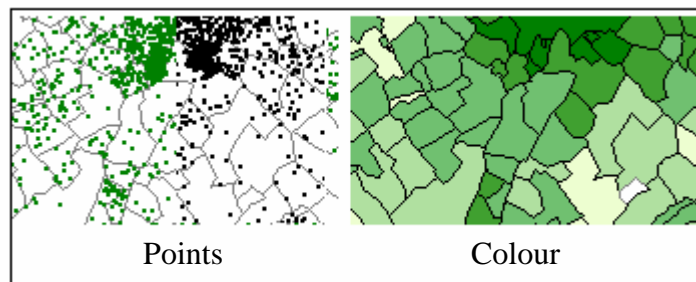
INHABITANTS					
Table 1		Table 2		Final range	
0	2000	100	900	100	1100
2000	3000	900	1400	1100	1800
3000	4000	1400	1700	1800	2700
4000	5000	1700	2400	2700	4200
5000	881000	2400	22400	4200	880400



The next maps that I made were the maps with density of population data. These data weren't continuous either. The density was inhabitants per square kilometre and the density of each settlement was different so I made choropleth. In the first map I chose a colour in different shades. The higher range had the darkest tone and the lower range had the lightest colour. As with the previous data, because of the huge number of inhabitants in Budapest I had to modify the ranges. I did it to show

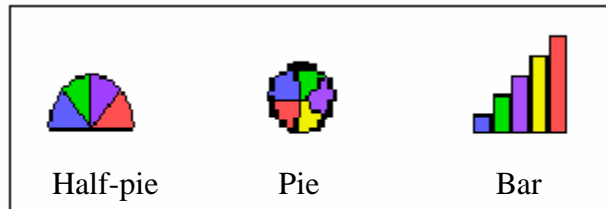
the very best map. The other kind of map that I made was using points. But this was different than the inhabitants map. Each point drawn shows a number of people. This way, I managed to show in the map the settlements with more density of population, because these settlements had a higher number of points than the settlements with fewer inhabitants. I changed the colour of the points from black to green. Also I changed the value of the point. In some maps, one point represented fifty people and in other maps with points represented twenty people.

DENSITY OF POPULATION					
Table 1		Table 2		Final range	
0	200	70	130	0	100
200	300	130	140	100	150
300	400	140	170	150	300
400	500	170	190	300	600
500	29900	190	7520	600	29900

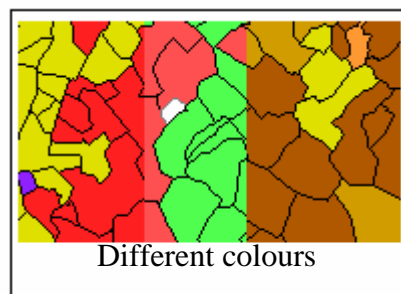


Finally I made the maps about religions. In each settlement different people that believe in different religions existed. These data weren't continuous either. The best options to show this variable were cartodiagrams because of the existence of several religions with different number of devotees. MapInfo can make different cartodiagrams. First I made half-pies cartodiagrams. In each half-pie the percentage of people that believed in this religion was shown in a different colour. Every half-pie had as many colours as religions existed in the settlement. The size of the half-pie would change depending on the number of religions. In the second type, the cartodiagram was a pie chart. This way, as previously, each religion had a different colour and its own percentage of believers. The sizes of the pie charts will change in order of the number of believers. The higher number of believers will have the higher size. In both ways, the size of the charts is calculated by the software. The graduation can be constant, logarithmic or square root. The best graduation is logarithmic due to the existence of Budapest that distorts the results. The last map I made was with bar charts. In this cartodiagram each bar shows a different religion and is coloured in

different colours. Depending on the number of believers, the bar will be high or small. Also the size of the bar charts will change in order of the number of religious. The graduation, at same at the last ways, will be in different kinds.



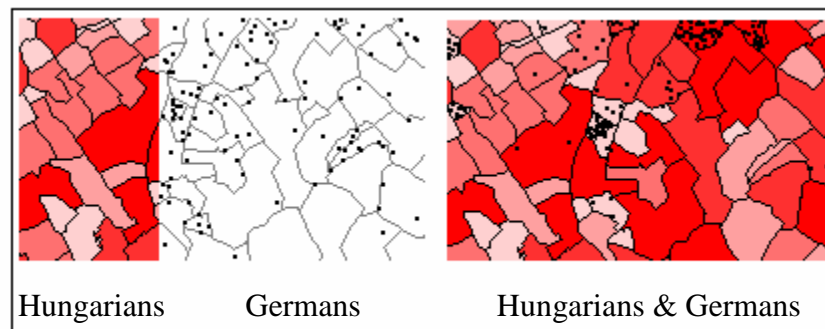
After this, I made the maps that showed the majority religion of each settlement. Again the data were discontinuous, so I made choropleths. As the religions were different and they didn't have any relation, I chose different colours, one colour for each religion so the user would be able to identify the different religions at first. I only had five religions. I also made a map with a gradation of brown. The darkest showed the religion most repeated in the different settlements and the lightest the least repeated. However, I also made another map with the opposite legend.



I made other map using proportional symbols. I chose one religion and the number of believers was shown with a symbol of a different size. In this way the data were discontinuous. The size of the symbol, as all along the project, was made by MapInfo with a graduation of square root, logarithmic or constant. I chose the logarithmic because Budapest has a high population. Later, in this map I added a graduation of colour that showed the inhabitants of each settlement as I have explained at the beginning of this section.



Finally, I made maps that showed the number of people of different nationalities. The data were discontinuous. For this process I used two different ways of representation. Both ways were choropleths. First of all, I made a map with graduation of colours that represented the Hungarian population in different settlements. In the population maps, the highest number of Hungarians was represented by the darkest shade. Later, in the same map I represented the number of Germans by dots and each point was equal to fifty Germans.



I should have previously explained that when using graduation of colour in thematic maps the darkest showed the highest value and the lightest the smallest one. The same was applied to lines or dots. There were also no writing norms that I applied, e.g. to use white colour to represent higher Z coordinates or to use green colours to represent the lower Z coordinates. There isn't any normalization, but the same kinds of representation are always used. Another norm is that when there are a high amount of elements, you should use a gradation of two related colour or add to the colour different patterns, because with one colour it is difficult to see the different graduations in a map.

Thematic maps show information and this information should be represented in the best possible way to allow you to see the information at first glance.

4.1.2.- LIMITATIONS OF MAPINFO

As I have explained, MapInfo offers different possibilities of representation of maps. However, there are three important limitations in its use.

First, MapInfo doesn't allow to change the size of charts or to move them. This means that small areas produce charts that can hide another chart or the cross border while big areas will produce big charts, which will consequently hide more information. MapInfo doesn't allow fixing the size of chart bars either, so if you have an area with high values, such as Budapest, the bars will hide a larger map area. If you change the size of the charts you won't see some information.

Secondly, when you use symbols, you can't move them because MapInfo places them automatically. If they are very little, they appear in the cross border of the settlement, and it can seem as if they belonged to another settlement. Besides, if you enlarge the size of the symbols you can't avoid hiding information.

Last, when you chose a graduation of colour, you have to choose the default colour because MapInfo doesn't allow any minimizing of colour. You should choose different colours and this way difficult the work if you want to change, e.g. from brown to yellow.

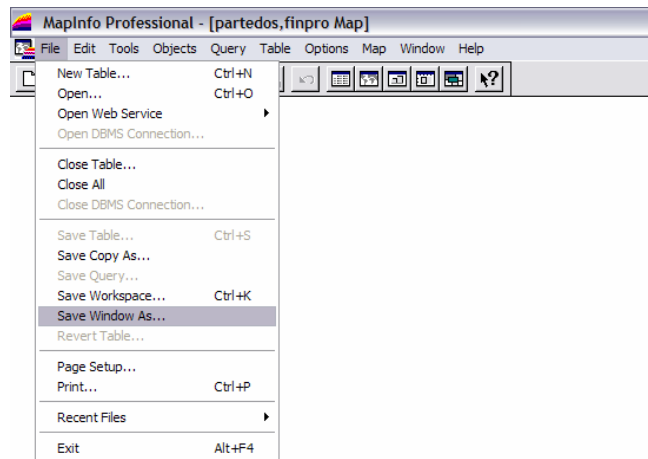
4.2.- MAP PRINTING

There are two steps to be explained. First the process of printing and the colours used and then some limitations of the software in this area.

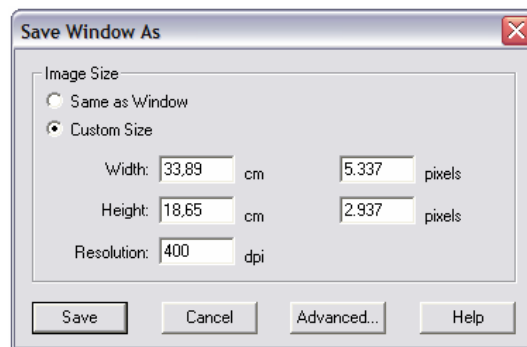
4.2.1.- PROCESSING

I made the map, and I saved the window in different formats and in different dimensions with MapInfo layer. Some maps were saved in TIFF format, others in bitmap (BMP) format. I could print these formats but I had to do these steps for each map. Therefore I had the same number of maps as windows saved. If I wanted to add the legend, I had to save the legend in a new window and afterwards add the legend with one image-editing software like Paint.

The process to save the map windows is to choose "File/Saved window as..." in the upper menu.



After I chose the place to save the window and the format, another window appeared, in which you can change the dimension. I only change the DPI resolution, to print the map. Afterwards I selected the “Advance” option and I removed the frame of the window.



4.2.2. LIMITATIONS OF MAPINFO

In MapInfo you can create a layout in which you can add the legend of the map and you can organize the layout. This tool isn't very useful because the map and the legend appear in the same size that they have in the window. Besides, MapInfo puts one frame in each window.

Another limitation is the colour. MapInfo only allows a selection between RGB and HSV colour, which are both used by monitors. You can't change to the CMYK model used by printers. The problem is that the colour changes from the monitor to the printer.

There are different models of colour. The RGB colour model is an additive model in which red, green and blue (often used in additive light models) are combined in various ways to reproduce other colours. The name of the model and the abbreviation 'RGB' come from the three primary colours: Red, Green and Blue. These three colours should not be confused with the primary pigments of red, blue and yellow, known in the art world as 'primary colours'. Each pixel on the screen can be represented in the computer or interface hardware (for example, a 'graphic card') as a value for red, green and blue. These values are converted into intensities used for display.

The HSV model is commonly used in computer graphics applications. In various application contexts, a user must choose a colour to be applied to a particular graphical element, being the HSV colour wheel used often. In this wheel, the hue is represented by a circular region; a separate triangular region may be used to represent saturation and value. Typically, the vertical axis of the triangle indicates saturation, while the horizontal axis corresponds to value. In this way, a colour can be chosen by first picking the hue from the circular region, then selecting the desired saturation and value from the triangular region.

CMYK is a subtractive colour model used in colour printing (Cyan, Magenta, Yellow and black). The mixture of ideal CMY colours is subtractive (cyan, magenta, and yellow printed together on white result in black). CMYK works through light absorption. The colours that are seen are from the part of light that is not absorbed. For several practical reasons, the 'black' generated by mixing the subtractive primaries is not ideal and so four-color printing uses black ink in addition to the subtractive primaries.

4.3.- MAP COMPARISONS

To finish this work, I will reflect on a comparison of the different maps made. The comparisons are between maps of inhabitants, density of population, majority religion, maps with one religion and the map that joins data about Hungarians and Germans.

The best maps to show the information about inhabitants are the maps made with graduation of colour and lines or dots maps, but only if the colour of the dots or lines aren't black. In the lines and dot maps done with black colour, the areas with more population and then more lines or dots produce an optic effect as a vibration. This effect doesn't allow seeing well the borders of the settlements. Although the colour changes to grey the border seems discontinuous again and it is very difficult to

see it. Besides in lines and dots maps the borders seems discontinuous. The map with the symbols of persons show very well the information, but the symbols can hide other symbols and some borders. It shows correctly the settlements with a high population. In this case the border colour used is grey.

The maps about density of population don't have any problem. In the maps of gradation of colour you can see perfectly the areas with a higher value of density. The colour of the borders in this map is black because another colour made more difficult the reading of information. In the dot maps with points, when a dot is equal to twenty people, logically there are more dots than when a dot is equal to fifty, and they look same as a green colour or black. Maybe black colour is the best way. In this map, and opposite to what happened in the aforementioned map, the colour of the border should be grey. If the colour had been black, the dots and borders would have been mixed.

The maps about religions represented by charts are more problematical. MapInfo doesn't allow any change in sizes or location of the charts, so some charts can hide information. The best maps were made using half-pies. This kind of map contained the charts with the smallest, but readable size, with less hidden map information. It isn't a good quality map, but it is the best of the maps made. The maps with pies hide a lot of information. The worst solution is the bar chart. In this kind of maps, you can't read the map information due to the little settlements.

In the maps representing the majority religions the first version was to represent each religion with a different colour. At first the Roman Catholic, which is the majority religion, had a light green colour. The next religions had different colours, red for the Calvinist, blue for Lutherans and green and purple for the other religions. The blue and red colours were darker than the green of the Roman Catholics. Then I changed the light green colour to dark green colour. Then red and blue didn't stand out from the other colours. Later, I tried with a brown scale. First, I used the light brown for the Roman Catholic and the dark brown for the Calvinist. This map was erroneous, I changed the value of the colour and use dark brown for Catholics.

In the maps with the symbols of religions, as had happened with the inhabitants map with symbols, it looks very well at first glance and you can see the settlements with more believers. This map only has the problem of hidden information; it depends on the size of the symbols. Besides, I chose symbols that show the religion: a cross for the Catholics and a David's Star for Jewish. When I added the information about the inhabitants with a gradation of colour, the map allows to identify if the religion was majority or not. As the colour of the population was

different from the colour of the symbols, there wasn't any problem to distinguish both in the map.

In the map that shows the two nationalities it is very easy to identify the information. The processes to represent the information were graduation of colour and dots. The basic colour of the graduation chosen was red and it shows the number of Hungarians. The dots are black and show the number of Germans. One dot is equal to fifty people. In the map you can see the places with the higher number of Germans. Besides, the places with a low number of Hungarians have the higher number of Germans. The border is black, which makes dots and border mixed, but if the colour of the border is grey it would be very difficult to see the border. Then the best solution is to draw the border with black.

5.- USED SOFTWARE

The software used in this work are:

AutoCad (*.dwg/*.dxf)

It is one of the CAD software more used in the world. I have used the version 2000 and the version 2004 of the software. Both versions are similar, although if you work in the 2004 version and later you want to open the file with the 2000 version, you should to save previously the file in the 2000 version.

Excel (*.xls)

With this software I made the database with the data that I obtained from the Atlas. The software is included in Microsoft Office. I used the 2003 version although it doesn't matter because I didn't make any calculation.

MapInfo (*.map/*.tab)

This is Geographical Information System software. It is a vectorial GIS. I used 7.0 and 8.0 version. The difference is that the last version has the tool to transform coordinates. I used this tool to give coordinates to my map.

Word (*.txt)

Word is a text processor. It is one of the most sell and use software over the world. This software is included in Microsoft Office. I used it to write the memory of the work. I had the 2003 version.

PowerPoint (*.pps)

With this software made the slides to present my work. It is included in Microsoft Office. I used the 2003 version. It has new presentation options like as movements.

6.0.- BIBLIOGRAPHY

- ARANAZ DEL RIO, FERNANDO, *Tu amigo el mapa*, Ministerio de Fomento, Dirección General del Instituto Geográfico Nacional, cuarta edición, Spain, 1998 April.

-MAPINFO, *MapInfo Professional, user's guide version 6.5*, MapInfo Corporation, Troy, New York (EEUU), 2001 May.

- PELLICER PEREZ, JULIO, *Cartografía*, Ministerio de educación, Cuba, 1980.

-ZENTAI, LÁZSLÓ, *A Történelmi Magyarország Atlasza és Adattára 1914*, Talma Kiadó, Budapest (Hungary), 2001.

Web sources:

- Free multimedia encyclopedia, 2006 of November of 21.

<www.wikipedia.com>

ANNEXE 1
