

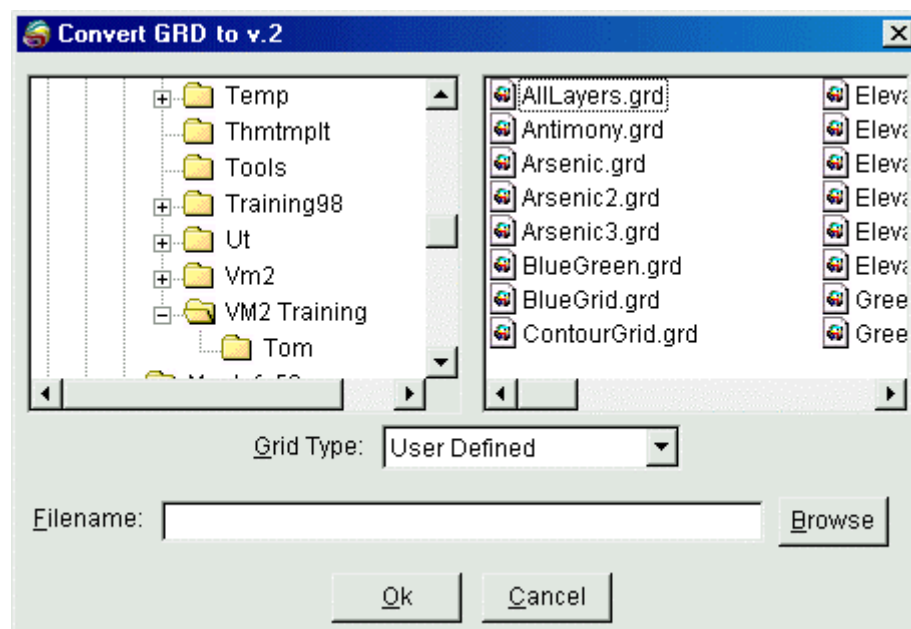
Version 1.x Grid Converter

Collectively, the *Grid Tools* are a series of utilities that work with *Vertical Mapper* grid files to increase the flexibility and workability of grids in the MapInfo desktop mapping environment. The *Grid Tools* include functions that allow *Vertical Mapper* grids to be exported to other common mapping formats. They include functions to reproject a grid from one coordinate system into any other MapInfo-supported system, reclassify a grid's values to a predefined value or class, splice adjacent or coincident grids into a seamless map coverage, trim grids to fit into a custom map boundary, and change the cell size (resolution) of a grid in order to reduce the file size or to make it more comparable to adjacent or overlying grids.

The utilities have been designed to directly support the user in working with the entire range of analytical functions available in *Vertical Mapper*. However, in the larger context, all of these functions ultimately provide major benefits to the user by making *Vertical Mapper* grids more usable as maps for sharing information visually and for transferring geographic data between GIS environments.

In order to ensure compatibility with earlier versions, a Version 1.x to Version 2.x grid converter is included in the *Grid Tools* utilities.

- To access the conversion tool, choose the  button from the *Grid Manager* dialogue and select the *1.x to 2.0* command from the drop-down menu.



1. From the file manager box, select the drive, directory and file name of the *Vertical Mapper* Version 1.x grid file (.GRD) to be converted to Version 2.0 format.
2. Select the **Grid Type** from the drop-down list that refers to the unit of measurement of the Z-value in the Version 1.x grid.

- 3.
4. Enter an appropriate ***Filename*** for the new Version 2.0 grid and select the ***OK*** button. The dialogue box will remain open for subsequent file conversions. To close the dialogue, select the ***Cancel*** button or use the *Close Window* icon in the top right corner of the dialogue.

Note: If more than one grid file is selected for conversion, the file name edit box is disabled. When OK is selected, you are prompted to ***Select Output Directory*** which must be different from the input directory. The files are then converted and placed into the output directory with the same file name.