
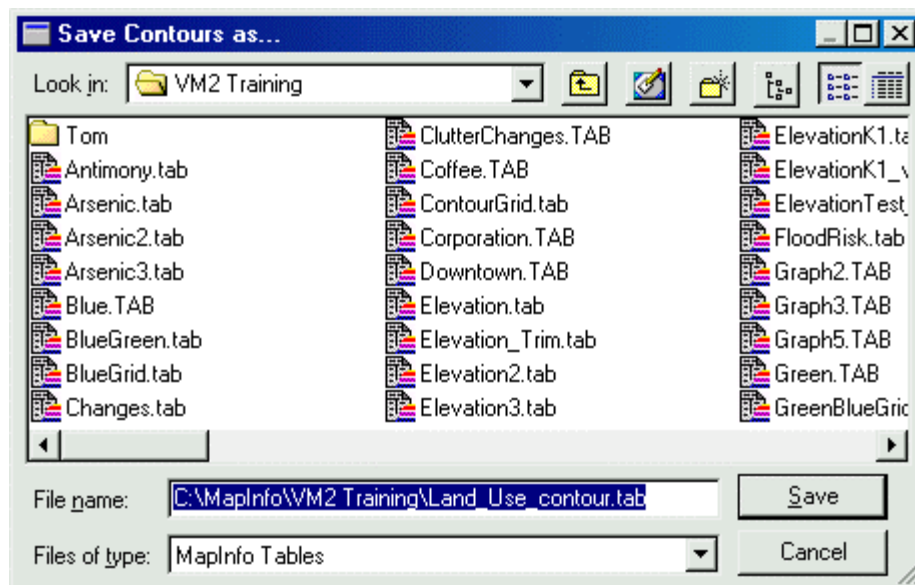


Contouring Classified Grids

Just as region contours are created from numeric grids, they can also be created from classified grids. In this case, a more simplified threading process is used that traces line work along the cell boundaries between different classes and converts each unique classified group of cells into a single MapInfo region. The value of each classified grouping is attached as an entry to the region table in a column labeled "Class".

- From the Vertical *Mapper Grid Manager* dialogue box, highlight a classified grid file from the list of open grids and select the  button.
- A dialogue box appears and prompts the user to *Save Contours As...* Enter a name in the *Filename* box and select *Save*. The contouring function automatically completes and draws the MapInfo region table into a new Map window.



- Note that the new regions are an exact reproduction of the classified grid (.GRC) regions but are in MapInfo vector format with an attached column entry.

