

## Creating Polyline Contours

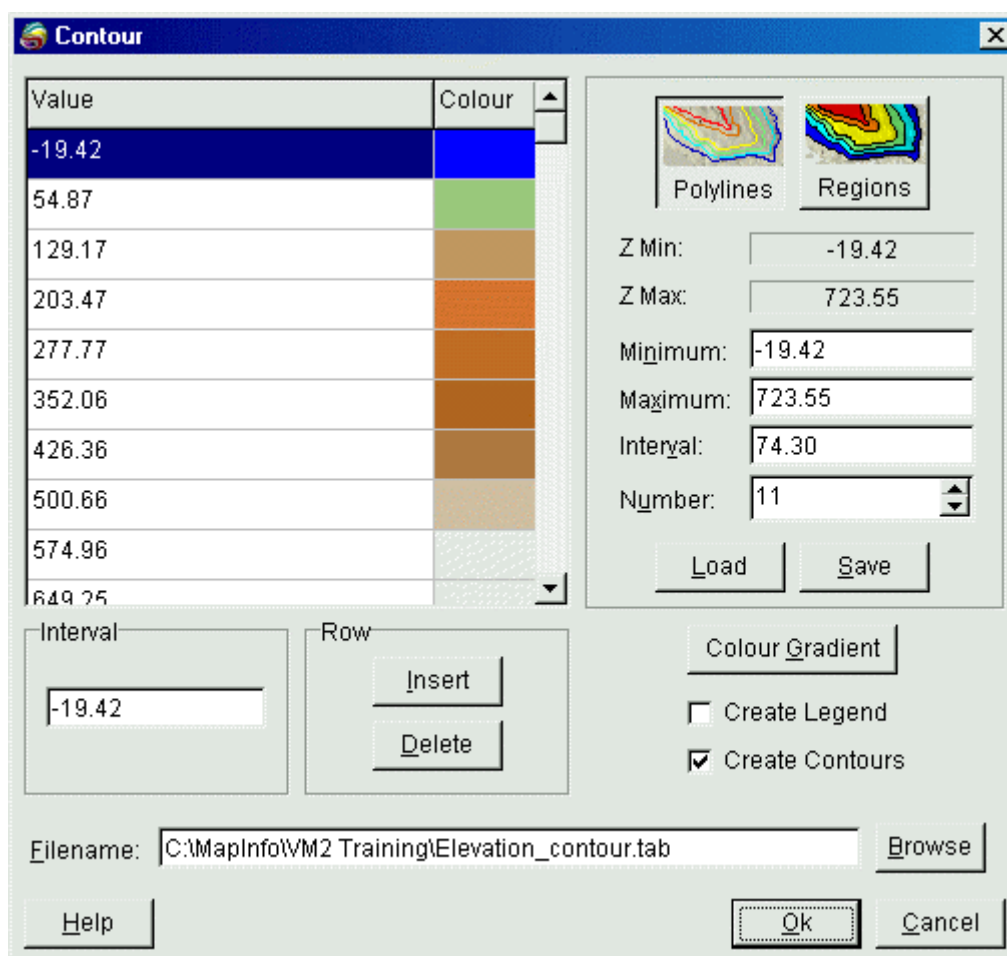
A standard contour line map can be generated from within *Vertical Mapper* using a process that threads polylines through an existing grid file. A number of settings can be defined by the user including the range of grid values to be contoured, the contour interval, and the colour and style of individual contour lines. These settings can be saved in a configuration file and applied to other grid files.

From the *Vertical Mapper Grid Manager* dialogue box, highlight a grid file from the list of open grids

and select the  button.



- From the *Contour* dialogue box, select the *Create Polylines* button. The dialogue box will present a number of options that customize the generation of isolines threaded through the grid.



- Define the contour lines using the following controls:

1. Set the **Minimum** value, defined as the lowest grid value that will be examined during the threading process.
2. Set the **Maximum** value, defined as the highest grid value that will be examined during the threading process.
3. Set the **Interval** or the **Number** settings to control the number of contour lines created.

**Tip:** The default setting in the *Minimum Value* field is the lowest value encountered in the grid file and may not, in some cases, be appropriate for the contouring process. In addition, if you want to maintain consistency in *Contour Intervals* throughout a series of grid files, the settings must remain the same for each contour plot.

- 1 The **Value / Colour** list shows all of the contour lines that will be created based on the *Contour Intervals* settings. From here, individual contours can be added or removed and line colours can be changed.
1. To change the range of colours that appear by default in the *Value/Colour* list, select the **Colour Gradient** button to load the colour histogram attached to the selected grid file into the *Grid Colour Tool*. Assign a new gradient colour ramp to the grid values using the commands described in Chapter 7. This new colour ramp will be used to assign new line colours to each contour interval. It will not assign these new colours to the grid.
2. To change the colour of an individual contour line, double click on any *Value* or corresponding *Colour* field and select an appropriate colour and pattern using standard MapInfo options from the **Line Style** dialogue box.
3. To add a new contour interval to the list of existing intervals, highlight the interval that is lower

than the one to be added in the *Value/Colour* list, and select the ***Insert*** button. The new interval is added midway between the highlighted interval and the next higher one. The value of the new interval may be changed using the ***Interval*** edit box.

4. To remove a contour interval, highlight the desired row in the *Value/Colour* list and select the ***Delete*** button.

- 

- Select the ***Create Legend*** check box to create a legend of contour levels and line colours.
- Select the ***Create Contours*** check box to create the contour file. This option can be disabled but not the corresponding legend when a contour file has already been created. If desired, a legend can be created later without having to recreate the contour file.
- Customized interval and line colour settings may be saved by choosing the ***Save*** button. Similarly, saved profiles may be loaded into any contouring session using the ***Load*** button. Profiles are saved as text files with a .PFC extension.
- Once all contour parameters have been set, save the contour map to a .TAB file. The file will automatically display in a Map window. If the ***Create Legend*** check box was selected in the *Contour* dialogue, a legend will automatically appear in a different Map window.