



International Cartographic Association
Association Cartographique Internationale

CARTOGRAPHY

October 2012

A monthly on-line periodical designed to capture the latest cartographic news and developments from around the world.

If you have any general cartography items of interest then please email them to [editor-eCARTO news](mailto:editor-eCARTO@ica.org)

International Cartographic Association Contacts

- [Georg Gartner](#), the **President** of the ICA about policy issues.
- [László Zentai](#), the **Secretary-General** of the ICA about the agenda (places/dates of manifestations), addresses of committees and members and obtaining publications.
- [Igor Drecki](#), the **News Editor** of the ICA for publication of ICA News and Future Items.
- Other members of the ICA **Executive Committee** (see the [Executive Committee page](#)).
- [Felix Ortog and Manuela Schmidt](#), the **Webmasters** of the ICA about technical errors or suggestions for this site.
- If you want to post news to the ICA website, please read our [Guidelines for posting news to the ICA website](#).

Periodical Content

International Cartographic Association Contacts.....	1
ICA NEWS	2
QUOTE	2
NEWS - Cartographic.....	3
MOBILE DEVICES - Cartography	14
APPLICATIONS - Cartographic	17
TECHNOLOGY, DEVELOPMENTS & KNOWLEDGE	19
RAMBLINGS – Cartographic Discussions.....	21
RESOURCES - Cartographic.....	25
BOOKS - Cartography.....	26
CARTOGRAPHY – Penalties, bans and shutdowns	29
JOB OPPORTUNITY or just a Grave Situation?	30
PASSIONATE about CARTOGRAPHY	32
TRACKING OUR MOVES.....	34
A FINAL PICTURE FROM OUR WORLD	35
CONFERENCES.....	35

ICA NEWS

Recent Posts

- [President's Blog: Winner of the ICA video contest](#)
- [October's Map of the Month is the Landscape Atlas of the Czech Republic](#)
- [Alluring bike journey visualisation reveals London's hubs](#)
- [First meeting of the Commission on Neocartography](#)
- [President's Blog: Mountain Cartography](#)

QUOTE

“Those cartographers are right characters, aren't they?”
(Sean, QI panellist – read more below)

NEWS - Cartographic

Aerometrex launches 3D mapping service

Published on Tue, 23/10/2012, 01:35:03



Adelaide firm, Aerometrex, will launch a new 3D mapping service, aero3Dpro, at the Science Exchange in Adelaide, this Thursday October 25th at 5:30pm.

Aero3Dpro models entire landscapes, including high-density urban environments, parks, gardens, suburbs and infrastructure in 3D geometry. It gives all users of mapping and CAD data realistic images for modelling real-world environments, with complete flexibility of viewpoint.

Read more:

<http://www.spatialsource.com.au/2012/10/23/article/Aerometrex-launches-3D-mapping-service/LHCBAVQYH.html>

Astronomers develop technique for mapping the universe in 3-D

October 23, 2012

Astronomers develop technique for mapping the universe in 3-D Galaxy cluster MACSJ0717.5+3745. Combining observations from Mauna Kea with data taken by telescopes in space, astronomers at the Institute for Astronomy (UH Manoa) and their collaborators have developed a technique that allows them to map collisions of giant galaxy clusters in three dimensions.

Read more:

<http://phys.org/news/2012-10-astronomers-technique-universe-d.html#jCp>

Quirky travel mapping application allows travellers to visualize trip planning

October 22, 2012 By [Nick Vivion](#)

Go Pro Travelling has announced their new take on maps, an interactive mapping application that allows users to plot out trips and collaborate with friends, family and colleagues to build trips in a visually engaging way.



The company, which is based in Greece and not affiliated with [GoPro](#) cameras, has added the functionality in an attempt to redefine the way that travel planning maps are created.

Read more:

<http://www.tnooz.com/2012/10/22/tlabs/quirky-travel-mapping-application-allows-groups-to-visualize-trip-planning/#2qRdBLzsVBvfgZR.99>

Ice Anglers Take Advantage of Navionics Mapping and Apps

NPAA Supporting Partner Press Release
Published October 22, 2012

WAREHAM, Massachusetts - Navionics, the world leader in electronic navigation. Navionics has anglers covered in the hard water season up North. While some anglers put away their boats for the end of open water season many continue on fishing once the water freezes over.

GPS units handheld or mounted to snowmobiles and ATV's are becoming a mainstay so why not take advantage of the same mapping that you use during the open water season! Let Navionics HD Mapping take you to the structure that holds the fish. With Navionics constantly adding updates thru the Freshest Data program you can



take advantage of the most up to date and detailed lake cartography while "driving" to your fishing hole.

Read more:

<http://icefishing.outdoorsfirst.com/articles/10.22.2012/5287/Ice.Anglers.Take.Advantage.of.Navionics.Mapping.and.Apps/>

Walking Access Mapping System - ARA HĪKOI

Welcome to the New Zealand Walking Access Commission's online public access mapping system, the Walking Access Mapping System (WAMS). WAMS has been designed to assist the public to identify land in New Zealand open to recreational access on foot and to provide other access related information.

Read more:

<http://wams.org.nz/wams/doc/desktop/disclaimer/disclaimer.html?redirect=http://wams.org.nz/wams Desktop/index.aspx>

The New Cartographers: 'Mappy Hour,' Sex Clubs And Diversity

[Carl Franzen](#) October 21, 2012, 7:00 AM 10710

Never mind [Apple's maps misfire](#), the free, volunteer-made [OpenStreetMap](#) may end up reigning supreme anyway, as companies increasingly choose it for map data over Google. But as the project grows, it's becoming harder and harder for its members to agree on what direction to go in next. Part 3 of a 3-part series. Read [part 1 here](#) and [part 2 here](#).

Maps can help guide us through life, but they also shape how we see the world, for better or worse.



Manuela de Pretis/Flickr

Take the classic example of the “[Gall-Peters Projection](#),” created by German historian Arno Peters, based off the work of Scottish evangelical minister and astronomer [John Gall](#), which seeks to represent area accurately — so that areas of the same size on the map appear so, which is not the case for other flat maps of spherical areas.

Read more:

<http://idealab.talkingpointsmemo.com/2012/10/openstreetmap-part-3-new-cartographers.php>

MapMyFitness Maps Workout Location Basics For Free [Review]

Giles Turnbull (11:15 am PDT, Oct 19)



Free, and does the basics pretty well

MapMyWalk is one of a range of apps from the people at MapMyFitness. It's not a pretty app, but mapping walks doesn't have to be pretty to be functional. And it is functional. Mostly.

To get started, you'll have to set up an account, because all the [MapMyFitness](#) services are designed to be social.

Read more:

<http://www.cultofmac.com/196828/mapmyfitness-maps-workout-location-basics-for-free/#bqqzSj49FzggJHmm.99>

A closer look at Apple iOS 6 Maps and eight alternatives (comparison review)

By [Matthew Miller](#) for [Smartphones and Cell Phones](#) | October 17, 2012 -- 12:26 GMT (23:26 AEST)

Summary: Apple's iOS 6 Maps works well for many people, but Tim Cook did issue an apology and offered up some alternatives. Let's take a closer look at Apple Maps and some of these available choices and don't forget to check out the 110+ screenshot gallery.

..... I tested iOS 6 Maps, Navigon, CoPilot Live, Telenav Scout, MotionX GPS Drive, and Waze apps while also checking out Google Maps, Nokia Maps, and Bing Maps via the Safari web browser.

Read more:

<http://www.zdnet.com/a-closer-look-at-apple-ios-6-maps-and-eight-alternatives-comparison-review-7000005820/>

Small area technique vital for mapping poverty

[Rasheed Khalid](#)

Sunday, October 21, 2012

Islamabad: Professor Stephen Haslett from Massey University, New Zealand, has said that large scale national surveys are usually unable to provide detailed information at local level which necessitates the use of small area estimate (SAE), a technique that provides reliable estimates from lower geographic level by using statistical modeling.

Read more:

<http://www.thenews.com.pk/Todays-News-6-138674-Small-area-technique-vital-for-mapping-poverty>

Re-mapping the Pacific replaces some historic charts by Captain Cook

Updated 4 October 2012, 17:07 AEST

One of the world's largest cruise ship companies has slowly been re-charting areas of the Pacific that haven't been properly mapped since Captain Cook passed through the region.

Re-mapping the Pacific replaces some historic charts by Captain Cook (Credit: ABC)

The company says the re-mapping will open up new areas for tourists, new routes for other ships and be good for Pacific Island economies.

Read more:

<http://www.radioaustralia.net.au/international/radio/program/pacific-beat/remapping-the-pacific-replaces-some-historic-charts-by-captain-cook/1025550>

Mapping technology could aid in tracebacks

10/19/2012 1:43:45 PM
Andy Nelson

A technology application developed at a U.S. Department of Energy facility could shorten the time it takes to track down the source of contaminated food in an outbreak.

The stochastic mapping model developed at the department's Sandia National Laboratories would use probability theory to help account for uncertainties along the supply chain during a food safety outbreak, according to a Sandia news release. That could make it easier to trace outbreaks to their source, Stephen Conrad, a Sandia researcher, said in the release.

Read more:

<http://www.thepacker.com/fruit-vegetable-news/Mapping-technology-could-aid-in-tracebacks-174977901.html>

Crime mapping website for England and Wales is expanded

15 October 2012 Last updated at 06:48 GMT

People in England and Wales can compare crime levels in their neighbourhood with other areas, following the expansion of a crime-mapping website.



The maps already record reports of different categories of crime and anti-social behaviour

The Home Office has widened the www.police.uk Compare Your Area tool to allow people to compare crime levels for a certain borough or district.

Read more:

<http://www.bbc.co.uk/news/uk-19944817>

Mapping it out: software helps unpick housing managers' problems

Andy Bradley

[Guardian Professional](#), Thursday 11 October 2012 08.45 BST

Using maps to understand data can free up land for development, engage tenants and tackle fuel poverty.



The truth is out there: mapping data together can help housing providers solve problems from development to repairs and maintenance. Photograph: Gso Images/Getty Images

Like many other housing associations Aster Group has used mapping software to plot and manage ground maintenance contracts. But as our organisation has grown, we realised other areas of the company could benefit from being able to overlay different types of information about a location on an interactive map.

Mapping housing data through geographical information systems (GIS) helps to spot trends or answer specific questions about our work.

Read more:

<http://www.guardian.co.uk/housing-network/2012/oct/11/housing-associations-using-data-maps>

DMS announces training and commercial support for Quantum GIS

Published on Tue, 23/10/2012, 01:31:05

Digital Mapping Solutions (DMS) recently announced the introduction of commercial training and support packages for the free Quantum GIS (QGIS) package, throughout Australia and New Zealand.



Read more:

<http://www.spatialsource.com.au/2012/10/23/article/DMS-announces-training-and-commercial-support-for-Quantum-GIS/FBZHLQLRRG.html>

Wanderous: A Map App For iPhone That Gets You Lost (On Purpose)

The Huffington Post | By [Jason Gilbert](#) Posted: 10/18/2012 12:38 pm



[Wanderous](#), a new mapping and GPS app for iPhone with a focus on local discovery, is a potential fix for that all-too-common conundrum: It's a turn-by-turn directions app that supplies you with detours to historic or intriguing places nearby to your route. You enter in your starting point and destination and Wanderous spits out directions, along with three or four parks, landmarks, or historical corridors that are close.

Read more:

http://www.huffingtonpost.com/2012/10/18/wanderous-map-app-iphone_n_1979302.html

Why modern maps put everyone at the centre of the world

12 October 2012 Last updated at 12:44 GMT



With new GPS technology, it is almost impossible to get lost nowadays. So how will the death of paper maps change the way we live, asks Simon Garfield.

Got truly and outstandingly lost recently? Enjoy the feeling while you can, for it's becoming an increasingly difficult task.

As a curious race we have always liked to know where we are, but it is now almost impossible not to know - our phones, computers and sat navs keep us continually co-ordinated, and through them we are involuntarily tracked ourselves. Once the preserve and privilege of the rich and influential, maps and accurate wayfinding have suddenly come to feel like a birthright, to the point where if things don't meet our expectations (good afternoon Apple Maps), we feel worse than deprived, we feel truly disorientated.

Read more:

<http://www.bbc.co.uk/news/magazine-19908848>

Licensed Mapping - Vital to Keep Up with Changing Face of Britain

Written by Ordnance Survey
Thursday, 18 October 2012

Ordnance Survey, Great Britain's national mapping agency, is reminding land and property professionals to ensure that they are not risking their professional reputation by using unlicensed mapping data.

Over the last 10 years the use of digital location-based information has changed significantly, from being used by only a small number of organisations to becoming an essential business decision-making tool. This increased reliance on, and recognition of, digital mapping data has also resulted in customers demanding the most up-to-date information available. Ordnance Survey makes up to 10 000 changes to the master map database of Great Britain every day, reflecting the rapid developments in the nation's environment. However, it is not only important for organisations to have the most up-to-date data, but also vital that they have the appropriate licence to effectively use it. The use of older, unlicensed data not, only has legal and cost implications, but also risks damaging professional reputations, which may have taken many years to build.

Read more:

<http://www.amerisurv.com/content/view/10600/2/>

Google Maps shows most searched places in Delhi, Mumbai, Bengaluru

18 Oct, 2012, 4:48 pm IST | by tech2 News Staff

According to the Google IPSOS report on mobile behaviour, 46 percent of smartphone users in India are using their devices to look up directions, or just simply explore maps.

Read more:

<http://tech2.in.com/news/general/google-maps-shows-most-searched-places-in-delhi-mumbai-bengaluru/519062>

Google Goes to Great Depths for Watery Maps

By David Vranicar
TechNewsWorld
09/26/12 9:18 AM PT

Today in international tech news: Google has gone to great depths to get its hands on some reliable maps of coral reefs across the world.

Having already [mapped Antarctica](#) and [the North Pole](#), Google has added panoramic images of coral reefs on Google Street View.

As [the BBC reports](#), Google gathered the materials through the Catlin Seaview Survey, a project designed to study the health of coral reefs. Scientists with the



Catlin Group, based in Bermuda, used a trio of wide-angle lenses snapping 24-megapixel photos from each lens.

Among the coral reef added to the maps: Australia's Great Barrier Reef, Hawaii's Hanauma Bay and the Philippines' Apo Island.

Read more:

<http://www.technewsworld.com/story/76249.html>

Google cameras map Grand Canyon trails

October 25, 2012 - 8:31AM
Felicia Fonseca

Google and its Street View cameras have already taken users to narrow cobblestone alleys in Spain using a tricycle, to the [Great Barrier Reef on an underwater scooter](#) and to Canada's snow-covered slopes by snowmobile.

The search giant now has brought its all-seeing eyes — mounted for the first time on a backpack — down into the Grand Canyon, showcasing the attraction's most popular hiking trails on the South Rim and other walkways.



Google operations manager Steve Silverman stands along the canyon wall wearing the Trekker. *Photo: AP*

Read more:

<http://www.theage.com.au/digital-life/digital-life-news/google-cameras-map-grand-canyon-trails-20121025-286mg.html#ixzz2AGDDdng4>

Apple's maps: its worst software product yet?

September 27, 2012

[Asher Moses](#)

Technology Editor

The best of the worst in Apple Maps



Steep drop after the Anzac Bridge in Sydney.

Read more:

<http://www.brisbanetimes.com.au/digital-life/mobiles/apples-maps-its-worst-software-product-yet-20120927-26mgz.html#ixzz27ljtkuUR>

MOBILE DEVICES - Cartography

Esri moves into smart phone mapping with Geoloqi buy

[Joab Jackson](#) (IDG News Service)

— 16 October, 2012 17:53

Esri now offers an API that returns geographically specific information.

Ramping up efforts to serve the growing market for mobile Web geocoding services, geographic information systems (GIS) provider Esri has purchased mobile location based services provider Geoloqi. Terms of the deal were not disclosed.

Esri plans to combine Geoloqi's Web 2.0 technology with its own traditional GIS capabilities in order to offer advanced mobile location services for smartphone applications.

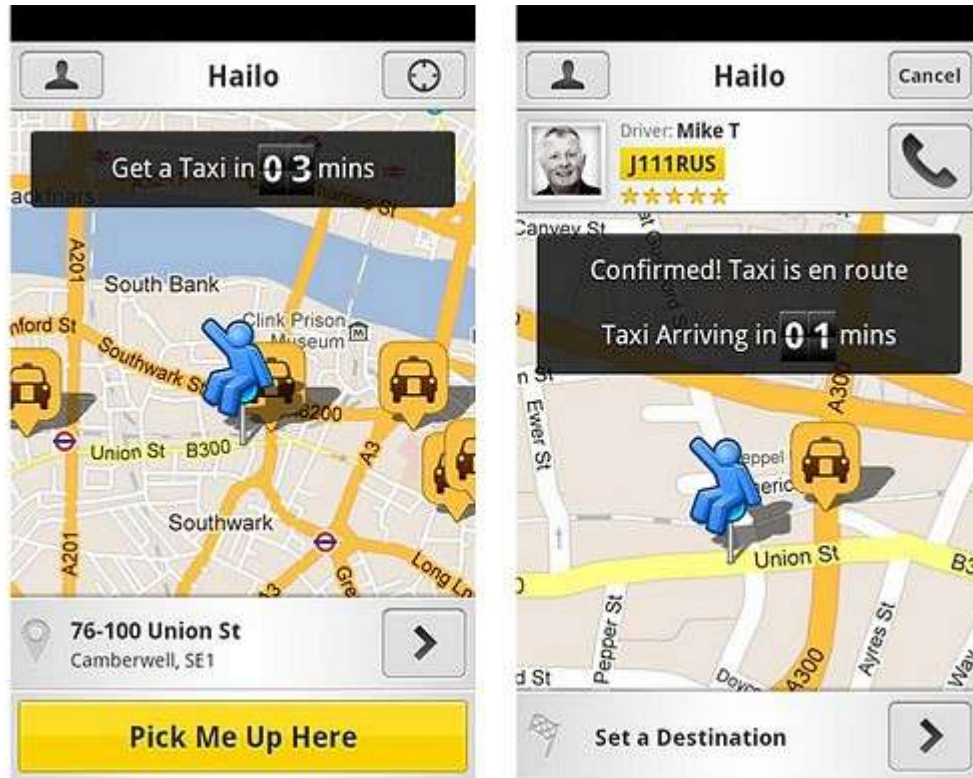
Read more:

http://www.goodgarguide.com.au/article/439260/esri_moves_into_smart_phone_mapping_geoloqi_buy/

The 25 best travel apps

By Helena Lee
7:00AM BST 21 Oct 2012

There are lots of apps that can enhance your travelling experience. Here are a few of our favourites.



The Hailo app lets you summon a cab from your mobile

The Cartographer

£2.49, iPhone, iPad

Plan your trip with vintage-style maps that are designed to inspire the intrepid traveller. Using Google's mymaps, outline the route before downloading the maps to your device which can be accessed through the app.

Other App reviews can be viewed at this site

Read more:

<http://www.telegraph.co.uk/technology/mobile-app-reviews/9614344/The-25-best-travel-apps.html>

Map Search On PCs “Eroding,” Shifting To Mobile — comScore

Oct 16, 2012 at 10:34am ET by [Greg Sterling](#)



It all makes sense. According to [comScore](#), map-based search on the PC has now peaked and is starting to erode. By contrast mobile usage of mapping applications is growing and will continue to do so for the foreseeable future.

Apple Maps' problems notwithstanding, smartphone mapping apps offer a better overall experience than online maps. Because they're in your pocket they're available when they're most needed: on the go. And they offer location-aware/search nearby capabilities that online maps do not.

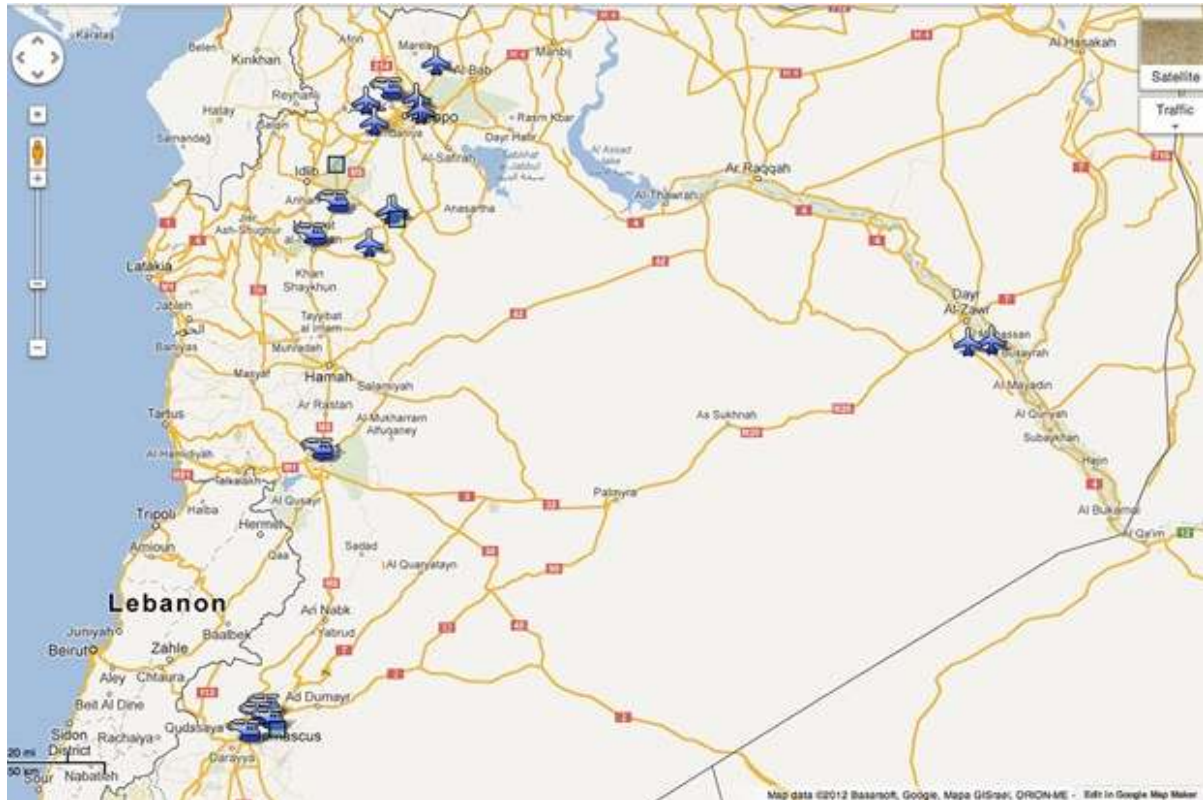
Read more:

<http://searchengineland.com/map-based-search-on-pcs-eroding-shifting-to-mobile-comscore-136750>

APPLICATIONS - Cartographic

Danish architect maps Syrian rebel strikes on planes and helicopters

By [David Axe](#)
22 October 12



In July, the embattled regime of Syrian president Bashar al-Assad [unleashed its jet fighters](#) against the growing rebel forces of the Free Syrian Army, marking a major escalation of the bloody civil war. The rebels responded. With guns and, allegedly, [Stinger shoulder-fired missiles](#) acquired from the CIA, they sent some of Assad's roughly 460 planes and copters tumbling in flames to the ground.

Now a Danish architect and part-time aviation journalist [is mapping each claimed shoot-down](#) of Assad's jets and helicopters, resulting in the first running tabulation of the cost -- at least in terms of machinery -- of the escalating Syrian air war. Bjørn Holst Jespersen's map, sponsored by journalist [David Cenciotti's blog The Aviationist](#), marks 19 possible "kills" by rebel forces, as reported in the press or seen in YouTube videos.

Read more:

<http://www.wired.co.uk/news/archive/2012-10/22/map-of-syrian-rebel-hits>

Dean assesses recruiting with maps

Posted: Thursday, October 18, 2012 10:36 pm
By Robyn Dexter/In-depth Editor

The dean of the Honors College is helping Eastern figure out enrollment and recruiting methods by mapping the region with geographic information systems, better known as GIS.

John Stimac, the dean of the Honors College, is part of the Enrollment Worx group and is the chairman for the GIS Map Worx subcommittee.

He has been working in accordance with the group to plot out where Eastern applicants and students are from.

“GIS is a tool and we’re taking data that we already have and looking at it in a different light,” he said. “We’re able to look at the data more quickly than if we had to wade through all the numbers.”

Through the mapping system, Stimac is able to tell how many people apply to Eastern as opposed to how many actually enroll and where they come from.

“We can start to identify hotspots,” he said. “This includes schools, towns, counties and zip code regions that we have the most success in.”

The map analysis can also be used for advertising purposes.

Read more:

http://www.dennews.com/news/dean-assesses-recruiting-with-maps/article_25c32344-199e-11e2-b345-0019bb30f31a.html

TECHNOLOGY, DEVELOPMENTS & KNOWLEDGE

MIT Researchers Build Wearable, Real-Time Mapping System

By [Stephanie Mlot](#)

September 26, 2012 10:09am EST



Search-and-rescue operations may one day get a boost from a wearable sensor system in development at the Massachusetts Institute of Technology (MIT).

MIT researchers built a system that digitally maps the environment where the wearer is moving. Ideally, the gadget will become a tool that emergency personnel could use to coordinate disaster response.

[According to MIT News](#), the machine's sensors wirelessly relay data to an off-site computer, allowing observers to watch the map's creation as the wearer moves through a space – in this instance, an MIT building hallway. The prototype was built using a stripped-down Microsoft Kinect sensor and a laser rangefinder.

Read more:

<http://www.pcmag.com/article2/0,2817,2410207,00.asp>

Metaio's New SDK Allows SLAM Mapping From 1,000 Feet

[Jay Donovan](#)

Thursday, October 18th, 2012



Munich-based augmented reality pioneers [Metaio](#) announce today a whole slew of new products. These include:

- [A new SDK](#) - powered by a new Augmented Reality Experience Language (AREL)
- An update to [Metaio Creator](#) (their AR desktop publishing tool for non-technical users)
- Advanced camera technologies like continuous visual search and [SLAM](#) (Simultaneous Localization and Mapping).

One of the primary goals of this new set of tools is to enable beginning-to-end augmented reality content creation and deployment for non-technical individuals or businesses.

And it's all free too (more or less).

Read more:

<http://techcrunch.com/2012/10/18/metaios-new-sdk-allows-slam-mapping-from-1000-feet/>

Scientists Create Fishy Robots for Naval Research

By Janet McConnaughey
October 23, 2012 12:54PM

Spying, mapping and mine detection and removal may be getting some new tools: robotic fish. The Navy is researching such tools as an eel undulating through waters, powered by batteries and checking for mines. A jellyfish is a surveillance robot, powered by the atoms around it. Fins pick up intelligence while propelling a robot bluegill sunfish.

An eel undulating through coastal waters, powered by batteries and checking for mines. A jellyfish is actually a surveillance robot, powered by the atoms around it. Fins pick up intelligence while propelling a robot bluegill sunfish.

The U.S. Office of Naval Research is supporting baby steps toward making those visions of the future a reality.

Read more:

http://www.sci-tech-today.com/story.xhtml?story_id=11300BSDOO88

Google equipping developers with Maps Tracks, Geolocation APIs

By [Rachel King](#) for [Between the Lines](#) | October 17, 2012 -- 18:39 GMT (05:39 AEST)

Summary: Google's new Maps Tracks and Geolocation APIs can be used by businesses that rely on "map-based information" for developing their own internal apps.

While Apple continues to rework its maps strategy, **Google's** mapping solutions portfolio only seems to get more well-rounded.

Today's release is targeted towards developers in the form of two new APIs for Google Maps with different ways of using GPS data.

Here's a breakdown on the two APIs:

- **Google Maps Tracks API:** Can be used to build apps that can store, display and analyze GPS data on a map. Built on top of Google's cloud infrastructure, this API also includes geo-fencing, in which an organization can outline a virtual region on a map in order to notify a device when it enters or exits a predefined area.
- **Google Maps Geolocation API:** With this tool, the app or device can determine its own location by looking up the locations of nearby Wi-Fi access points and cell towers -- without using GPS. Thus, by limiting GPS usage, the goal is to save battery life while enabling work indoors and in remote areas.

Read more:

<http://www.zdnet.com/google-equipping-developers-with-maps-tracks-geolocation-apis-7000005944/>

RAMBLINGS – Cartographic Discussions

Map Names, Map Traps and Map Mischief

16 Mar 2011

Posted by David Mumford

Labels: [Bartholomew](#), [Maps in the news](#), [Media](#)

Publicity over new names appearing on a recent map of Loch Lomond National Park (see [BBC News item](#)) generated much discussion in our office. Here are a couple of similar examples that we talked about:

The story that John George Bartholomew named a couple of islands in Loch Lomond: The book 'Bartholomew 150 years' by Leslie Gardner documents this - "Off Rosdhu Point, on Loch Lomond, there are two islets, one called St Winifred's and one St Rosalind's. John George Bartholomew gave them those names. While on a boating trip in that part of the loch, on a glorious June day, he came to an understanding with the girl he loved and later married." These names were commemorated on the next edition of the Half-inch Scotland series (No7, Firth of

Clyde).



Claims of an elephant in the contours: Much is written about this one, it even made it onto the BBC QI program (season 5, episode 4) which showed the elephant in the contour lines on a British Army Map of an area of the Gold Coast (Ghana) from the 1920s. Apparently it was created by bored surveyors.

Unsubstantiated accounts of Pu Ding basin somewhere in China, bunnies in the bathymetry (seabed contours) off South America, a backward phrase in some Greek hills and various rude words hidden across the globe.

Is this done for personal recognition, to catch map copying, mischief making or simply boredom?

As mapmakers we are always on the lookout for new places/features to capture to reflect changes around the world. We have just added a name to a previously unnamed gorge on the Isle of Skye on our forthcoming Collins Road Atlas 2012 - see previous post [Competition Winner Immortalised on Collins 2012 Big Road Atlas Britain](#).

Read more:

http://blog.collinsmaps.com/2011_03_01_archive.html

More than meets the eye: the secret life of maps

(British Library, London, England cartography exhibition)

11/1/2001

By [Eric J. Lyman](#)

The first problem in planning something like Lie of the Land: The Secret Life of Maps, the cartography exhibition currently on display at the British Library in London, is selecting the right maps to demonstrate how even the most faithful cartography springs from subjective, human elements that, intentionally or not, make it something other than what it purports to be. Not that examples are hard to come by, the exhibition's director told me. Quite the contrary, since in some way almost any of the 4.25 million maps in the library's collection could be used to illustrate the point.

That embarrassment of riches presented a unique problem that struck Peter Barber, the British Library's newly appointed map librarian and the director of Lie of the Land, immediately after choosing the topic for the eight-month-long exhibition. Barber had only recently taken his post following the retirement of the venerable Tony Campbell and was given just four months to plan, develop, and open the exhibition -- a task that usually takes much longer. In his comfortable office three floors directly above the exhibition, Barber explained the motives and the challenges behind mounting a display that uses something presumed to be fact to illustrate the contrary.

"People naturally tend to trust maps,"

Read more:

<http://www.ericjlyman.com/mercators.html>

QI Transcript – Elephant on the map

Series 5, Episode 4

Transcript by: Sarah Falk



Stephen

That is an elephant on a map, as you see. Disguised as a contour. It is an official British Army map that was made in the 1920s, and the, erm, soldiers responsible for surveying that part of, er, what is, in fact, the Gold Coast, what we would now call Ghana, just got bored and traced an elephant. They thought it was a very remote part that no one would ever bother to visit and need the map. So they just made an elephant with a little 300-foot contour mark on its back. There it is. And it was months, possibly years, in fact, before anyone noticed.

Sean

Those cartographers are right characters, aren't they?

Stephen

Aren't they just.

QI Transcript - Paris Sewer Pattern Echoes Street Pattern

Series 5, Episode 4
Transcript by: Sarah Falk

Now let's explore somewhere a little less unnerving. Paris. What's the best way to get from the Eiffel Tower to the Louvre without seeing any French people?

Viewscreens: Picture of a map of Paris, pointing out the Eiffel Tower and the Louvre.



Stephen

Their sewers echo their streets exactly. So under the Champs-Élysées, there's a sewer as wide as it, called the Champs-Élysées. They even have street signs in the sewers for the streets and all the side streets and at every intersection, they have all the street names. So if you knew Paris above ground, you'd never get lost. You could walk along these wonderful sewers.

QI Transcript – The First Man to Put Two Feet on Mount Everest

Stephen

Radhanath Sikdar was a mathematician from Bengal who was the first to identify Everest, which used to be known as Peak XV, as the world's highest mountain. And this was in 1852. He used a theodolite from 150 miles away, and he measured it to be *exactly* 29,000 feet. Exactly 29,000. And he thought no one would believe him; they would think he just rounded up and said, "Oh, it's about 29,000, you know," but he really . . . They say he was so annoyed by the fact that it was exactly 29,000 that he added two feet so that it looked as if he was terribly precise. So he was quite literally the man . . . the first man to put two feet on . . . on (Everest).

Read more:

<https://sites.google.com/site/qitranscripts/transcripts/5x04>

RESOURCES - Cartographic



The screenshot shows the Mercatormag.com website. The header features the site name and a decorative orange and yellow abstract graphic. Below the header, there is a search bar with a 'Search' button. To the right of the search bar is a 'Related Searches' section with a list of items: Antique Maps, Henry Hudson, New Amsterdam, World Globe, 3D Maps, and Book Review. Below the search bar, there is another 'Related Searches' section with a grid of items: John K. Waters, Road Map, Satellite Photos, World Atlas, Earth Satellite Map, Live Satellite Images, Satellite Internet, Live Webcam, Satellite Phone, Satellite Images of Earth, Live Maps, TomTom Maps, PowerPoint Maps, and Live Radio.

<http://ww5.mercatormag.com/>

BOOKS - Cartography

Lose yourself in a good map

ON THE MAP BY SIMON GARFIELD (Profile £16.99)

By [Harry Ritchie](#)

PUBLISHED: 17:33 GMT, 11 October 2012 | **UPDATED:** 06:45 GMT, 12 October 2012

We have satnav, we have Google Earth, we have maps on apps. Atlases, gazetteers, city A-Zs, maps that you have to unfold like a concertina and refold with all the ease and simplicity of completing a Rubik's cube - who needs 'em?



Read more:

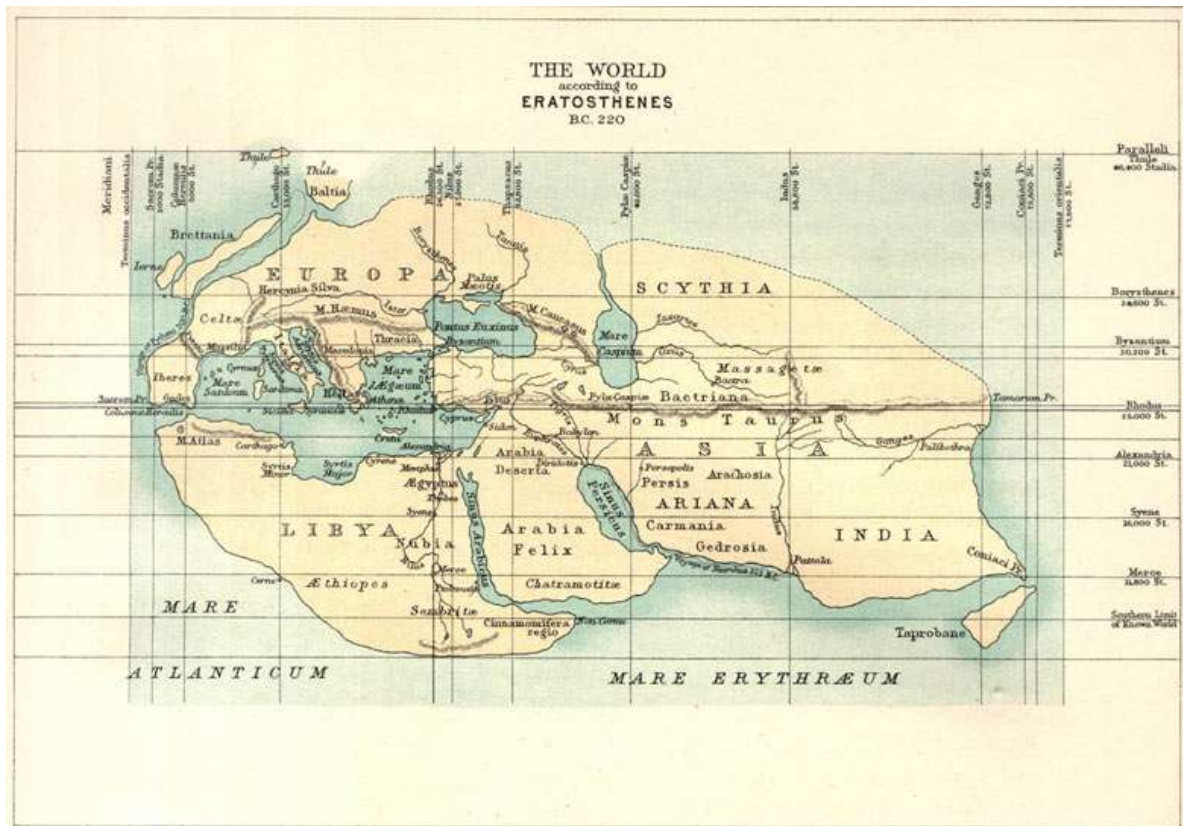
<http://www.dailymail.co.uk/home/books/article-2216234/Lose-good-map-ON-THE-MAP-BY-SIMON-GARFIELD.html>

Maps through the ages – in pictures

Simon Garfield
guardian.co.uk, Friday 19 October 2012 15.37 BST

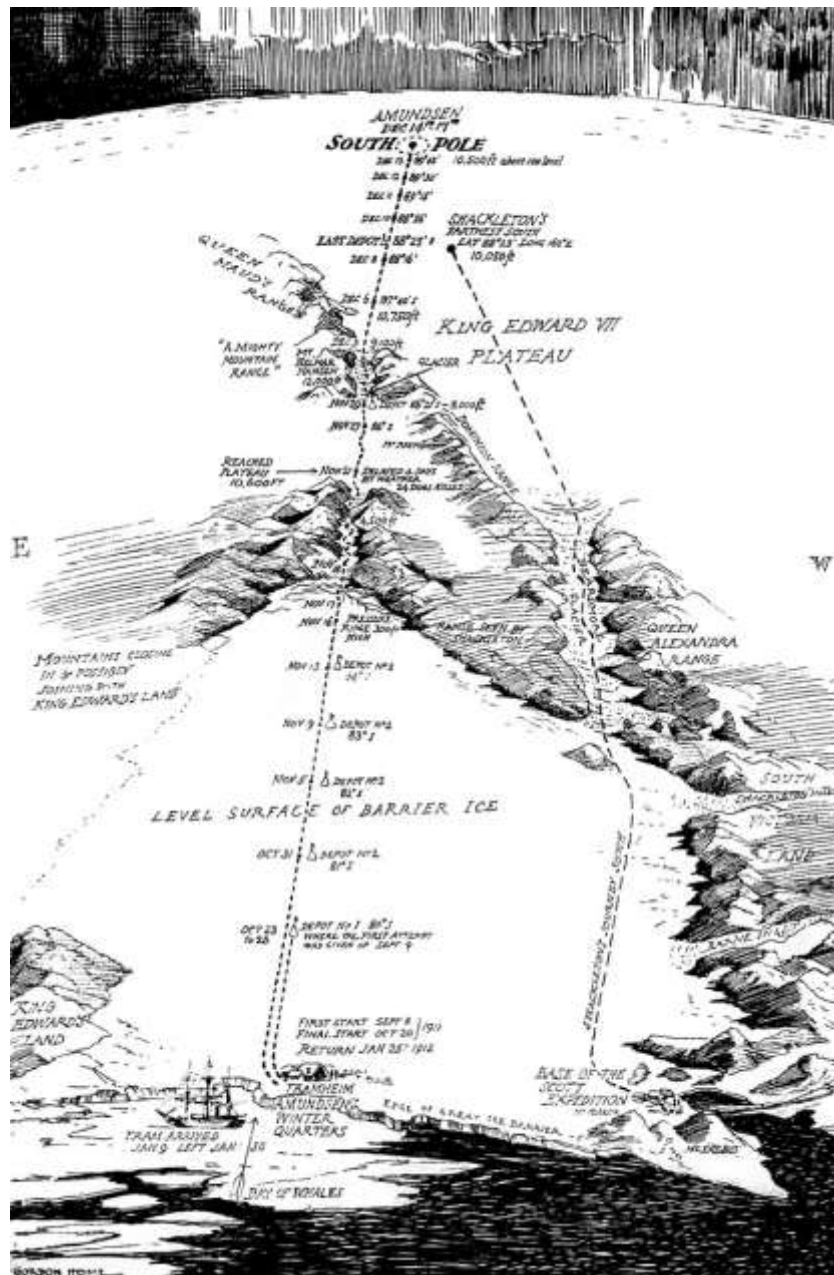
In his new book, [On the Map: Why the World Looks the Way it Does](#) (Profile Books), Simon Garfield charts the history of maps, from the early sketches of philosophers to the infographics of the digital age, and what they tell us about the way we see the world.

Some examples from the book:



The World According to Eratosthenes

Eratosthenes (born 276 BC) began his treatise *Geographica* shortly after becoming the third Librarian at The Great Library of Alexandria. His world map was drawn in about 194 BC. No contemporary version exists, this reproduction was made for a Victorian audience. Resembling a dinosaur skull it shows three recognisable continents: Europe to the north-east, Africa (described as Libya and Arabia) beneath it and Asia to the east, with the equator running through Rhodes. Photograph: Courtesy of Profile Books



Amundsen's route to the pole

Antarctica has long been described as the last place on earth to be mapped, and vast areas remain cartographically white and silent. This map, compiled by Englishman Gordon Home from telegraph reports, appeared in a book by Roald Amundsen published in 1912. Its principal attraction is narrative, with the map serving as a vivid adventure diary. Members at the Royal Geographical Society would not have been amused by the fact that Scott and Co had apparently yet to reach the pole. Photograph: Courtesy of Profile Books

Read more:

<http://www.guardian.co.uk/travel/interactive/2012/oct/19/maps-through-the-ages-pictures?newsfeed=true>

CARTOGRAPHY – Penalties, bans and shutdowns

Tougher penalties mapped out to fight illegal surveys

Updated: 2012-10-23 01:22
By Wang Qian (China Daily)

Amendment to focus on foreigners gathering sensitive information

Foreigners carrying out illegal surveys, mapping without permission or marking the location of key facilities without authorization, will face tougher penalties amid measures to enhance security of strategic areas.

Tackling these activities, and the requisite punishment, is under discussion as authorities draft amendments to the National Surveying and Mapping Law. According to the State Administration of Surveying, Mapping and Geo-information, the amendments have been included in the State Council's work agenda for 2012. Li Weibing, deputy director of legislation and industry management for the administration, said that he hopes the draft will be finished this year and the law will be implemented by 2017.

Almost 40 illegal surveying and mapping cases were detected between 2006 and 2011, mostly in border areas such as the Xinjiang Uygur autonomous region, the administration said.

Read more:

http://europe.chinadaily.com.cn/china/2012-10/23/content_15837733.htm

China's maps to be closely monitored for more accuracy

Updated: 2012-10-17 07:19
By An Baijie (China Daily)

China's mapping authority will apply strict measures to prevent the distribution of maps that contradict the country's territorial stance.

Maps have been found that contain a number of mistakes relating to Chinese territory, including marking the wrong borders, or identifying sensitive or classified geographical information. The map information should be regulated in accordance with the law, a notice issued by the National Administration of Surveying, Mapping and Geo-information has stated.

The publication of maps will be more strictly overseen by the mapping authorities, and publishing houses will be required to have the relevant qualifications before they publish maps, said the notice, which was posted on the website of the administration on Friday.

Online maps that incorrectly show China's territory will be banned and websites uploading incorrect maps will be shut down.

Read more:

http://www.chinadaily.com.cn/china/2012-10/17/content_15822962.htm

China may toughen laws on 'illegal' mapping: state media

CARTOGRAPHERS who publish maps which do not include all of China's territorial claims may receive tougher punishments in future, according to a draft of regulations, state media have reported.

The move comes amid a worsening political crisis between Tokyo and Beijing over disputed islands, and would see a ten-fold increase in the maximum fine payable for publishing maps considered inaccurate by the Chinese government.

Current regulations, drafted in 1995, allow for a maximum fine of 10,000 yuan (\$1500), which would increase to 100,000 yuan if the new law is passed, according to the Xinhua news agency.

Read more: <http://www.news.com.au/breaking-news/world/china-may-toughen-laws-on-illegal-mapping-state-media/story-e6frfkui-1226481437653#ixzz2ABmrJKWQ>

JOB OPPORTUNITY or just a Grave Situation?

Milford expert locates, maps long-lost graves



By NANCY BEAN FOSTER
Union Leader Correspondent
October 22, 2012 9:31PM



David Palance knows the ins and outs of New Hampshire's burial grounds, including the Vale End Cemetery in Wilton, a place considered by many to be haunted by the Blue Lady ghost. (NANCY BEAN FOSTER PHOTO)

As a professional cemetery mapper, David Palance spends a lot of time in New Hampshire's oldest burial grounds, unearthing clues to help researchers, historians and genealogists.

Palance, the owner of Auto Mech Cemetery Mapping in Milford, maps cemeteries using simple tools such as tape measures and more advanced gadgets including ground scanners and GPS. The work involves determining who is buried where and creating databases.

Read more:

<http://www.unionleader.com/article/20121023/NEWHAMPSHIRE09/710239937>

Arlington Cemetery debuts new interactive map, searchable on Internet, through mobile app



By Associated Press, Published: October 23
WASHINGTON

Arlington National Cemetery on Monday made available to the public a massive electronic database detailing the gravesites of the roughly 400,000 people buried there.

Cemetery officials built the database over the last two years to verify the accuracy of their records brought into question by reports of misidentified graves. Prior to 2010, the cemetery used paper records and maps to track who is buried where.

Read more:

http://www.washingtonpost.com/politics/arlington-cemetery-debuts-new-interactive-map-searchable-on-internet-through-mobile-app/2012/10/22/a73a9474-1c97-11e2-8817-41b9a7aaabc7_story.html

PASSIONATE about CARTOGRAPHY

Helping map the future

It's a day he will never forget. 13-year-old Salim Shekh still recalls how disappointed he felt when he searched for his neighbourhood on Google maps and realized that it didn't exist. Though the Rishi Aurobindo colony in Eastern Kolkata where Salim lived had 9,000 residents, it was considered a slum. This bothered Salim and fuelled his determination to give the area a new identity and place on the world map.

So he initiated a project to map the colony with his friends. Pencils, paper and cello tape were their only tools until a local NGO and UNICEF stepped in to help. Things got better, and the scope of the project grew.



Read more:

<http://indiatoday.intoday.in/story/helping-map-the-future/1/224715.html>

Lifelong Love of Maps Drives Ex-Military Mother of Three to Pursue Successful Career in GIS

Written by American Sentinel University

Friday, 19 October 2012

Maps Fanatic Loved GIS Even Before She Knew There was GIS

You never forget your first love. When Shaylene Caffey was a little girl, one of her favorite things to do was get out the atlas and plan out her family's road trips.

“Most teenagers had posters of heartthrobs on their walls. I had maps all over mine,” Caffey admits. “I think I loved geographic information systems (GIS) before I even knew there was GIS.”

Read more:

<http://www.amerisurv.com/content/view/10604/2/>

Apple Maps vs. my brain

October 20, 2012 at 1:30 pm by [Mónica Guzmán](#)

Damn you, Apple Maps. But not for the reasons you think.



“So, right now, if I asked you what direction Portland was, you really don’t know?” my husband asked me the other day. I smiled and shook my head. He’s plumbed the depths of my directional incompetence for five years and still can’t believe it.

Read more:

<http://www.geekwire.com/2012/apple-maps-brain/>

TRACKING OUR MOVES

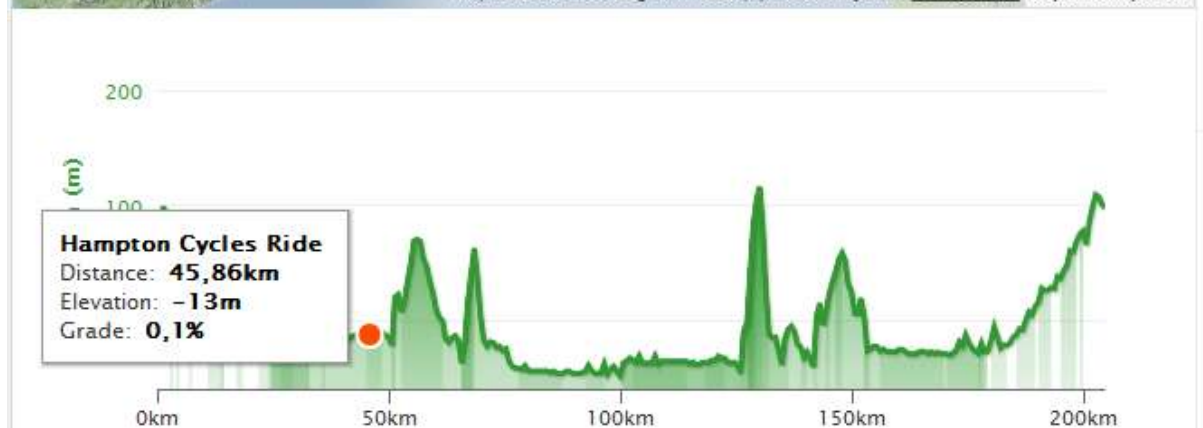
I have included this item to show how we can use our technology to record personal statistics for our activities. Wolfgang, was able to record his bicycle trip, including vertical profile, and download it to the Internet. I was amazed at his time for 204.5 km (I struggled to ride 100km in about the same time that day) but was equally impressed by the software. Check out the interactive components at <http://www.strava.com/rides/25625821>

10/21/2012 Glen Waverley, VIC, Australia

Wolfgang H. rode on Sunday, October 21, 2012

204.5 km **1,266 m** **07:34:21** **4,136**

Distance Elevation Moving Time Calories



A FINAL PICTURE FROM OUR WORLD

Great pictures of the world.pps



CONFERENCES

Go to the ICA website:

<http://icaci.org/calendar/>