



Commission on Education and Training

<http://lazarus.elte.hu/cet/>

April 2012 Newsletter

An occasional electronic newsletter from the Commission.

If you have any brief items of interest then please email them to david.fraser@rmit.edu.au for eCET.

If you have more substantial articles please send them to Igor Drecki at i.drecki@auckland.ac.nz for the ICA newsletter.

Quotes

"In their daily work cartographers are used to journeying over all the universe on their maps without the inconveniences, the expenses and the fatigues of travelling." (Professor F.J. Ormeling, President International Cartographic Association, 1984)

"It's remarkable what power you cartographers do wield in a modern world. The world as we visualise it is one of your making. You have implanted in the minds of all of us, pictures of the world fashioned around the conventions of map makers. We who grew up with Mercator's Projection on the wall have inhabited a planet top heavy with vast Greenland and still more vast northern Canada. We Australians live down-under, not up-over, only because of map makers and their conventions. And those of us who live in eastern Australia go up to Queensland, down to Antarctica and across to Western Australia because of the right-way-up concepts you have instilled in us." (His Excellency the Right Honourable Sir Ninian Stephen, Governor-General of Australia in his official opening address of the 12th International Cartographic Association Conference, Perth, Western Australia, 4-13 August 1984)

And on a lighter note:

"Where would we be without satellite navigation?" (Q.I.)

Cartography in the News

Satellite maps suggest Antarctica's penguins surprisingly plentiful

Saturday, April 14, 2012 0:33 am TWN, AFP

WASHINGTON -- Antarctica boasts almost twice as many emperor penguins as previously thought, researchers have discovered using satellite mapping technology to count to the iceberg-huddling birds from above.

<http://www.chinapost.com.tw/life/discover/2012/04/14/337770/Satellite-maps.htm>

Giant map makes for fun lessons in Juneau schools

Posted: April 13, 2012 - 12:05am

By [Sarah Day](#)

JUNEAU EMPIRE



Kurt Rieselbach's teaches a second-grade class about the Ring of Fire as they sit on a 26x35-foot National Geographic Giant Traveling Map of the Pacific Ocean at Harborview Elementary School on Wednesday.

Students in several Juneau schools got to stand on one of the world's largest maps this week and get an interesting interactive lesson in geography.

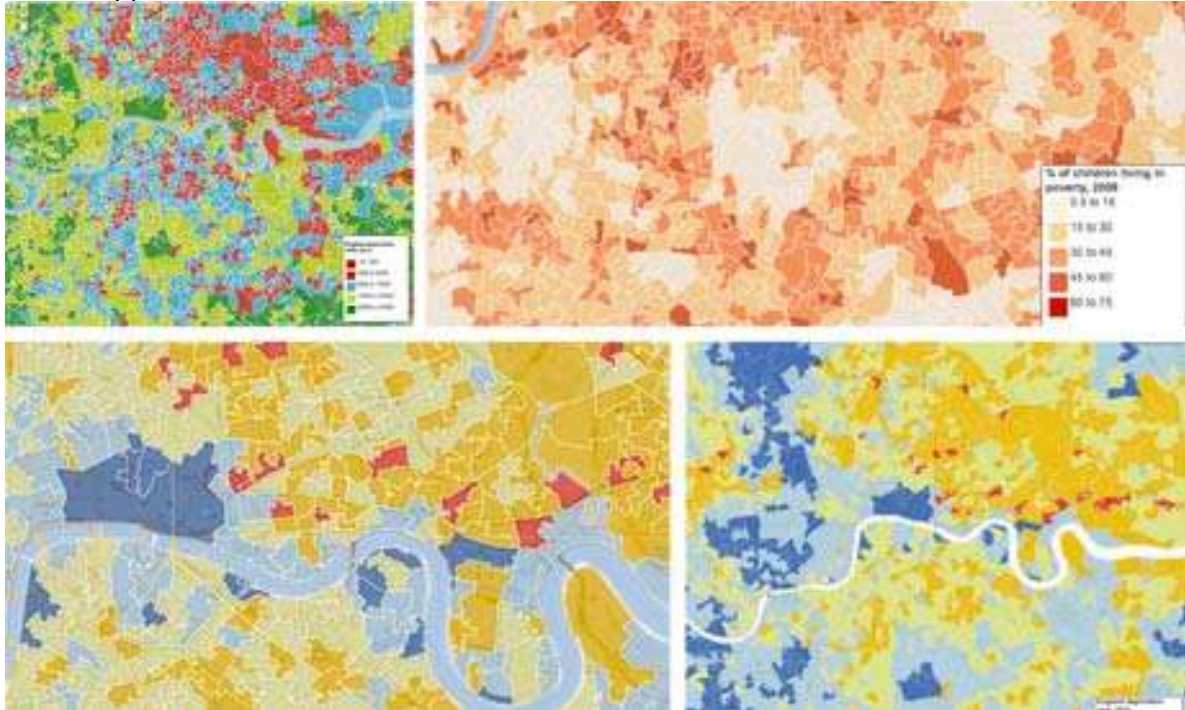
National Geographic has created a series of "Giant Traveling Maps" it loans out to geography programs.

<http://juneauempire.com/local/2012-04-13/giant-map-makes-fun-lessons-juneau-schools#.T4lcn9nLm7A>

http://www.recordnet.com/apps/pbcs.dll/article?AID=/20120414/A_LIFE/204140308

How can we get our map colours right? How open journalism helped us get better

How good are we at choosing colour palettes for maps on the Datablog?
What happened when our users showed us how to do it



Maps of many different colours. But which one is best?

How can you get the colour scales right on maps?

(*At this site*) is a Storify showing how the conversation evolved - to create a better map.

<http://www.guardian.co.uk/news/datablog/2012/apr/13/mapping-colours-open-journalism-storify>

Changing world view

Stockton native helps Google map Amazon

By [Jo Ann Kirby](#)
Record Staff Writer
April 14, 2012 12:00 AM

Besides sending its Street View car zipping around Stockton to update its Google Maps view of the city, the Mountain View-based tech company has also been mapping a more exotic locale.



The result is a 360-degree view of breathtaking beauty featuring rainforest, rivers and remote communities in the Amazon Basin.

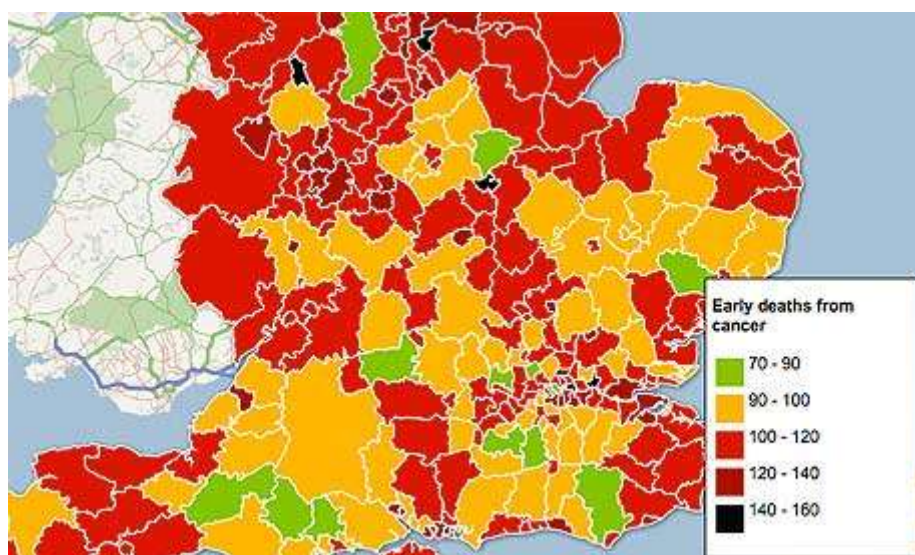
The Google team used 50,000 still photos to create the immersive, 360-degree panoramic views of the amazing region.

Check it out yourself, by going online to Google Earth, then type Rio Negro into the search.

Mapping and healthcare: can geographic data help service planning?

How can health organisations use geographic datasets to tailor the services they offer to the needs and habits of the community, asks Tracey Caldwell

[Tracey Caldwell](#)
[Guardian Professional](#), Thursday 12 April 2012 09.42 BST
[Article history](#)



Sophisticated mapping is helping health organisations to plan service provision. Photograph: Guardian

[Health](#) organisations are increasingly turning to mapping to visualise and plan service provision. More than two thirds of PCTs, all ambulance trusts and 69 hospital trusts in [England](#) and Wales have registered for the Public Sector Mapping Agreement (PSMA), which widens access to Ordnance Survey (OS) digital mapping products.

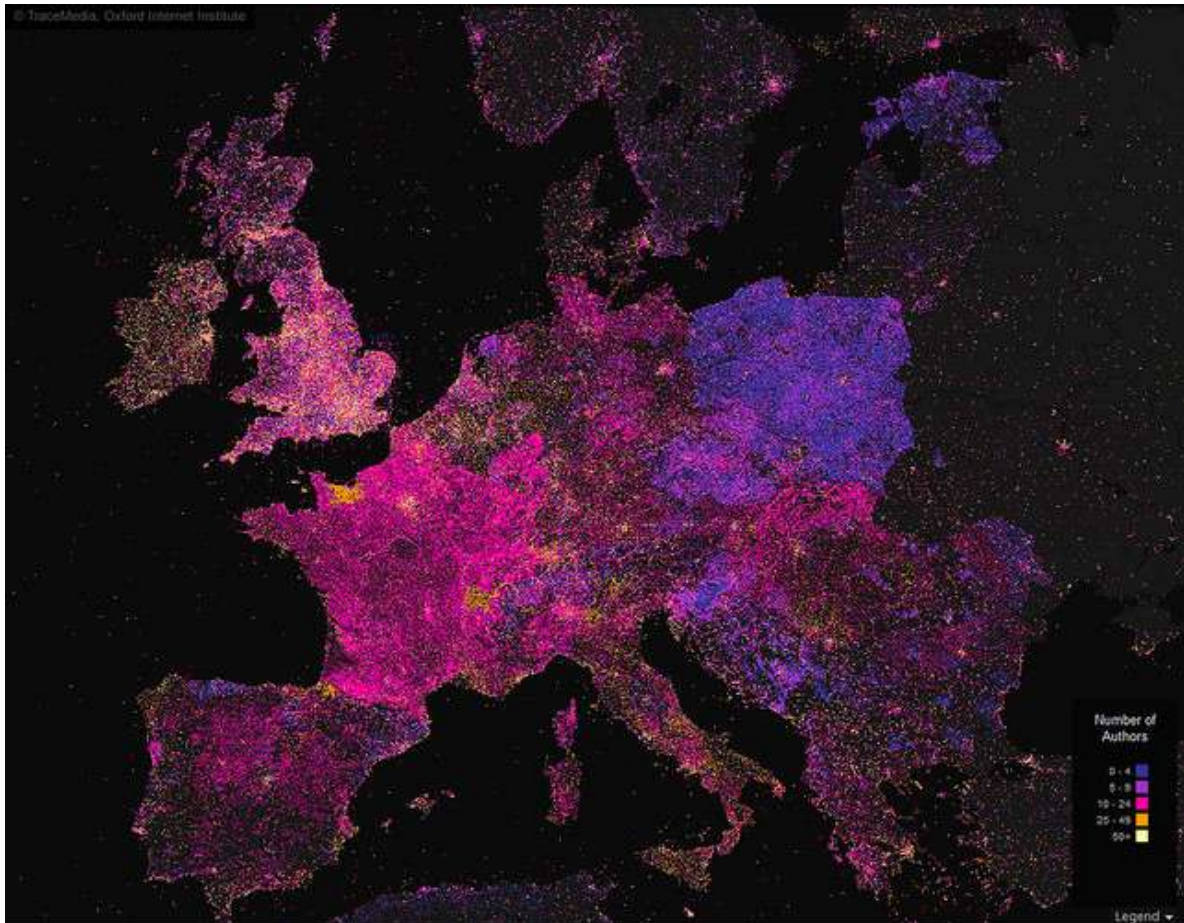
<http://www.guardian.co.uk/healthcare-network/2012/apr/12/mapping-healthcare-service-planning?newsfeed=true>

A Glowing Map Of Wikipedia's Worldwide Community

[Infographic of the Day](#)

Who is talking about who, and in what language?

[Mapping Wikipedia](#) is a project by [TraceMedia](#) in conjunction with the [Oxford Internet Institute](#). It's an interactive map that allows you to select a language, and see where that language is writing about.

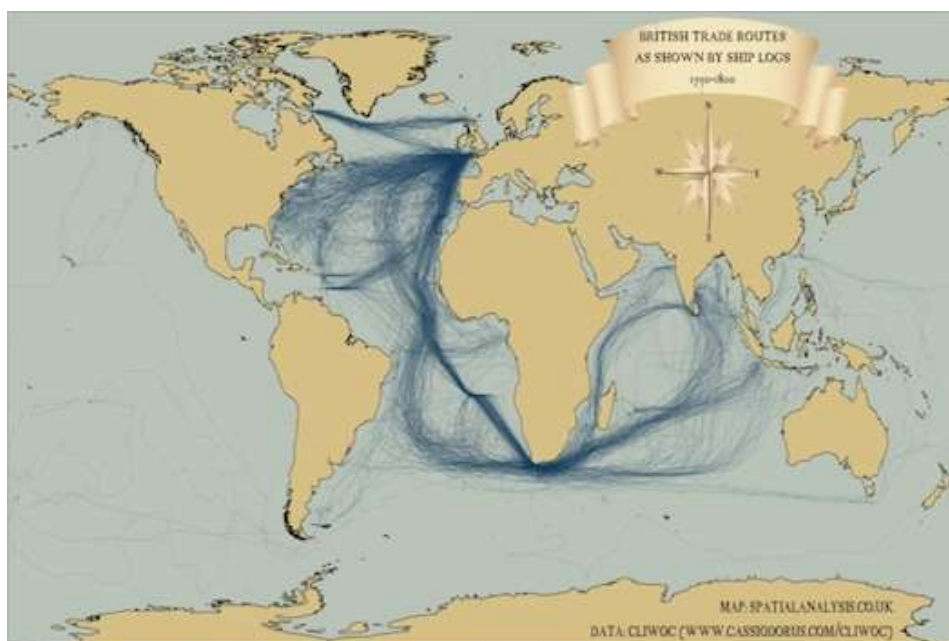


<http://www.fastcodesign.com/1669509/a-glowing-map-of-wikipedias-worldwide-community>

Modern Data Visualization Helps To Uncover Ancient Shipping Routes

By Guardian on April 13, 2012

This article titled "18th Century shipping mapped using 21st Century technology" was written by John Burn-Murdoch, for guardian.co.uk on Friday 13th April 2012 10.32 UTC



Last month we looked at an example of an [old mapping style being applied to modern data](#). This time it's the other way round. James Cheshire, of Spatial Analysis, has taken historical records of shipping routes between 1750 and 1800 and plotted them using modern mapping tools.

The first map, above, shows journeys made by British ships.

via PSFK: <http://www.psfk.com/2012/04/18th-century-shipping-map.html#ixzz1s0uvqAr0>

Maps: Dinosaurs to many travellers

April 11, 2012

By Evan Bevins - The Marietta Times (ebbevins@mariettatimes.com) , The Marietta Times

When it comes to getting from here to there, Williamstown resident Mike Knopp believes GPS devices are the way to go. His friend Travis Thompson, of Marietta, doesn't trust them. "I'm not saying GPS's are always wrong," said Thompson, 23. "They just always steer me wrong."

.....

Maps' numbers are declining as GPS devices and direction-giving smartphone apps and websites become more common, but many people like Thompson still use foldout maps and atlases to chart their courses.

<http://www.mariettatimes.com/page/content.detail/id/543389/Maps--Dinosaurs--to-many-travelers.html?nav=5002>

Google Maps illustrates how people depend too much on technology

By REBECCA MILLER Published April 11, 2012

The fast-paced evolution and expansion of the Internet is leading to the destruction of critical thinking and general intake and understanding of simple knowledge. With everything a Google search or a click away, memorizing and retaining information is becoming a thing of the past.

Basic knowledge of geography seems to be decreasing with each new innovation on Google Maps. North, south, east and west no longer need to be determined by geological markers, because you can simply type in the address of your desired destination and your smartphone or laptop will do the rest. Or can it?

http://www.wildcat.arizona.edu/index.php/article/2012/04/google_maps_illustrates_how_people_depend_too_much_on_technology

Dutchman Pioneers Hiking in the West Bank

By Juliane von Mittelstaedt
04/13/2012



Stefan Szepesi on a hike in the West Bank.

Jerusalem-based diplomat Stefan Szepesi discovered a love of hiking when he set out to explore the West Bank on foot, much to the confusion of the local Palestinians. He has now written the first walking guide to the region, which is the perfect place for hiking -- provided you steer clear of the military facilities and settlements.

<http://www.spiegel.de/international/world/0,1518,826679,00.html>

Google teases futuristic internet glasses

April 5, 2012 - 9:41AM



"A group of us from Google X (Labs) started Project Glass to build this kind of technology; one that helps you explore and share your world."

Images showed people wearing eyeglasses with stylish silver frames that featured tiny cameras and on-lens displays to discretely show information such as walking directions, weather forecasts or messages from friends.

Built-in microphones let wearers command the internet-linked glasses by speaking.

"We took a few design photos to show what this technology could look like and created a video to demonstrate what it might enable you to do,"

Read more: <http://www.theage.com.au/digital-life/hometech/google-teases-futuristic-internet-glasses-20120405-1wdt9.html#ixzz1r8HSocC1>

Cartographer – Job and Career Descriptions

Note this section is based on **U.S.A. information** and is included here to help expand our thinking beyond the context of our own nation.

[Geographic Information System Analyst / Cartographer](#)

Center for Environmental Management of Military La... - Eglin AFB, FL
POSITION A Geographic Information System (GIS) Analyst/**Cartographer** (Research Associate II Special) position is available with the Center for Environmental Management... \$45,000 - \$47,000 a year

[Naturejobs.com](#) - 12 days ago - [save job](#) - [block](#) - [email](#) - [more...](#)

[Production Cartographer](#)

Maponics LLC - White River Junction, VT

This multifaceted role will be responsible for the identification, acquisition and maintenance of spatial data resources and utilizing those resources in the...

[JobsInVT.com](#) - 17 days ago - [save job](#) - [block](#) - [email](#) - [more...](#)

[Cartographer](#)

Central Intelligence Agency - Washington, DC

The Central Intelligence Agency's Directorate of Intelligence is looking for talented **cartographers** to join the team that produces maps that contribute to complex... \$49,861 - \$92,001 a year

[HireDiversity.com](#) - 26 days ago - [save job](#) - [block](#) - [email](#) - [more...](#)

[Geographic Information System \(GIS\) Analyst/Cartographer \(Re...](#)

Colorado State University ★★★★★ [3 reviews](#) - Fort Collins, CO
POSITION A Geographic Information System (GIS) Analyst/**Cartographer** (Research Associate II Special) position is available with the Center for Environmental Management... \$45,000 - \$47,000 a year

[Colorado State University](#) - 5 hours ago - [save job](#) - [block](#) - [email](#) - [more...](#)

[Supervisory Geographer - GS-0150-13/Supervisory Cartographer...](#)

Department Of The Interior - Lakewood, CO

Are you a professional Geographer or **Cartographer** looking for a position in the Federal workforce? Do you have a passion for LiDAR, IfSAR, and orthoimagery? Do you...

\$81,823 - \$114,158 a year

[usajobs.gov](#) - 22 hours ago - [save job](#) - [block](#) - [email](#) - [more...](#)

<http://www.indeed.com/q-Cartographer-jobs.html>



Careers
in

Cartography and GIS



This booklet is published by the Cartographic and Geographic Information Society, whose mission is to support research, education, and practice to improve the understanding, creation, analysis, and use of maps and geographic information to support effective decision-making and improve the



www.cartogis.org

quality of life. CaGIS serves both students and professionals in the fields of cartography and GIS.



http://www.cartogis.org/docs/cartogis_careers.pdf

Free Mapping Resources

Free GIS Software - QGIS 1.7.4

Quantum GIS (QGIS) is a user friendly Open Source Geographic Information System ([GIS](#)) licensed under the [GNU General Public License](#). QGIS is an official project of the [Open Source Geospatial Foundation](#) (OSGeo). It runs on Linux, Unix, Mac OSX, and Windows and supports numerous vector, raster, and database formats and functionalities.

<http://www.qgis.org/>

Map Maker Pro desktop mapping

The foundation of the system is the free GIS, Map Maker *Gratis*. If your mapping needs are basic simply use Map Maker *Gratis* for free.

<http://www.mapmaker.com/>

ESRI Free Mapping Software

Easily visualize and share spatial information.

Web

- **ArcGIS Explorer Online**—Do queries, create dashboards, and author presentations.
- [ArcGIS Online for Personal Use](#)—Create and share maps everywhere.

Desktop

- **ArcGIS Explorer Desktop**—Combine your local data with online spatial information.
- **ArcGIS for AutoCAD**—Access ArcGIS map services within AutoCAD and prepare CAD data for use in ArcGIS.
- **ArcReader**—View high-quality interactive maps authored in ArcGIS for Desktop and published with the ArcGIS Publisher extension.

Mobile

- **ArcGIS for Smartphones and Tablets**—Navigate maps, collect and report data, and perform GIS analysis from your smartphone or tablet device.

<http://www.esri.com/software/free-mapping-software/index.html>

MapSphere

MapSphere is a mapping software for Windows that:

- downloads maps and satellite images from different sources (OpenStreetMap, Terraserver, LandSat, and others)
- stores all the mapping data on the hard drive for offline use
- represents the map in 2D and 3D modes
- supports GPS-receivers to track your current position
- displays the location of other users and their GPS tracks
- provides a chat to discuss your travels
- geo-references your photos according to your track and uploads them to your personal trip page
- shows tracks, photos, and chat messages on the map
- supports geocaching
- supports an easy-to-use iPad viewer

<http://www.mapsphere.com/>

Smart Phone Mapping Apps

GeoInformatics

GeoInformatics has the first international Geo-news magazine iPhone application allowing users to access the latest news.....: very cool !

[Download](#) your free GeoInformatics app now in the App Store.

www.geoinformatics.com

Access and Edit Esri Maps on Kindle Fire

ArcGIS for Android Now Available at Amazon Appstore? for Android

press release

April 10, 2012, 2:17 p.m. EDT

REDLANDS, Calif., April 10, 2012 /PRNewswire via COMTEX/ --

Esri users can now access ArcGIS data and mapping capabilities on Amazon's popular Android tablet, Kindle Fire. ArcGIS for Android, also available on iOS devices, Windows Phones, and other Android devices, lets users access, edit, and share maps. The free app can be downloaded directly from the Amazon Appstore for Android.

<http://www.marketwatch.com/story/access-and-edit-esri-maps-on-kindle-fire-2012-04-10>

Amazing Views of Earth and of Aurora Borealis

Time lapse sequences of photographs taken by Ron Garan and the crew of expedition 28 & 29 onboard the International Space Station from August to October, 2011





http://www.youtube.com/watch?v=TwgXL6_lg58&feature=relmfu



View the earth in a new way.

Broadcasting live views of earth 24/7 to bring you a perspective unlike any other. Check out the videos below.



<http://www.urthecast.com/>

(Thanks to Laszlo Zentai for this link)

New York, New York

The initial pop-ups are a bit of a pain but once you are through these hurdles the rest is quite good, for those who have been to New York. For the rest of us these panoramas save the need to go there.



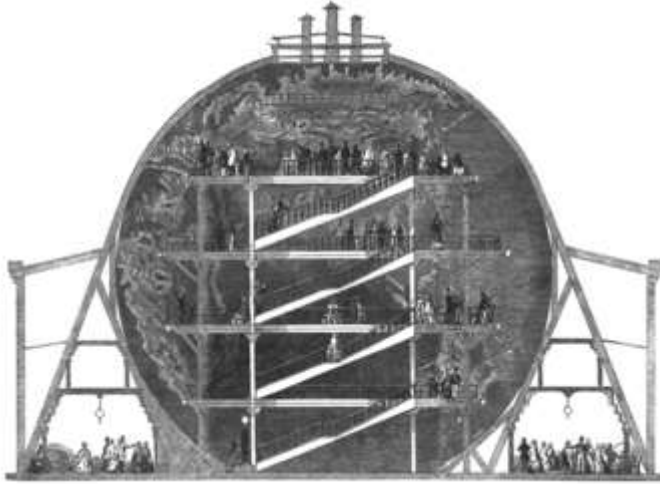
<http://www.pixelcase.com.au/vr/2009/newyork/>

(Thanks again to Laszlo Zentai for this link)

Great Cartographic Dreams - Realised

Wyld's Great Globe

From Wikipedia, the free encyclopedia



Interior of the Great Globe

Wyld's Great Globe (also known as **Wyld's Globe** or **Wyld's Monster Globe**) was an attraction situated in London's [Leicester Square](#) between 1851 and 1862, constructed by [James Wyld](#) (1812–1887), a distinguished mapmaker and former Member of Parliament for [Bodmin](#).

At the centre of a purpose-built hall was a giant globe, 60 feet 4 inches (18.39 m) in diameter. The globe was hollow and contained a staircase and elevated platforms which members of the public could climb in order to view the surface of the earth on its interior surface, which was modelled in plaster of Paris, complete with mountain ranges and rivers all to scale. *Punch* described the attraction as "a geographical globule which the mind can take in at one swallow."^[1] In the surrounding galleries were displays of Wyld's maps, globes and surveying equipment.

http://en.wikipedia.org/wiki/Wyld%27s_Great_Globe

Mapparium

From Wikipedia, the free encyclopedia



North America as it appears in the Mapparium.

The **Mapparium** is a three-story tall [glass globe](#) of [stained glass](#) that is viewed from a 30-foot-long (9.1 m) bridge through its interior. It is a unique exhibit at The [Mary Baker Eddy Library](#) in [Boston, Massachusetts](#).

Built in 1935 and based upon [Rand McNally](#) political maps published the previous year, the Mapparium shows the political world as it was at that time, including such long-disused labels as [Italian East Africa](#) and [Siam](#), as well as more-recently defunct political entities such as the [Soviet Union](#). In 1939, 1958, and 1966 the Church considered updating the map, but rejected it on the basis of cost and the special interest it holds as an historical [artifact](#).

<http://en.wikipedia.org/wiki/Mapparium>

The Map

THE MAP

by Wisława Szymborska (2012)

*Flat as a table,
On which it is put.
Nothing moves underneath it,
Nothing changes its place.
Above it – my human breath
Does not create vortexes of air
And nothing muddies its pure colours.*

*I like maps, because they lie.
Because they do not give an access to the virulent truth.
Because generously, with good-natured sense of humor
They spread on a table in front of me the world
Not of this world.*

Source: <http://icaci.org/>



<http://pinterest.com/pin/51017408248434118/>

What to Do With Your Old Paper Maps



<http://pinterest.com/pin/51017408248319801/>

Cartographic Research

Henrique Koehler has developed a natural orientation system which can simplify and harmonize all orientation means including postal codes and room numbers.

He calls this a quantum jump because it makes it possible to give a quantifiable answer to the question “where?”. In his opinion this is a better education contribution than navigation devices or post codes.

I (eCARTO editor) am a bit confused by his work but see what you make of it:

www.volksnav.com/misery

www.volksnav.com/YouAreHere (your maps?)

www.volksnav.com/fundamental

www.volksnav.com/UNGIWG10

According to Henrique “*My system makes smarter and sharpens the orientation sense. Concerning cartography, this innovation can be realized through a simple change from the squared to a quasipolar grid. This grid has almost magic characteristics according to www.volksnav.com/map*”.

More:

www.volksnav.de/Melbourne

www.volksnav.de/iMelbourne

www.volksnav.de/LondonMapplet

www.volksnav.de/iLondon

www.volksnav.de/Lonodon

3D Image



Contribution from Les Isdale

What about a 3D Printer



<http://www.youtube.com/watch?v=R4wvv6Sh0ng&feature=related>

Printing a bicycle – if you don't believe it, watch this video.



Imagine the cartographic model making capabilities.

<http://www.youtube.com/watch?v=hmxjLpu2BvY&feature=youtu.be>

3D printing a terrain map of Mount Rainier



<http://www.youtube.com/watch?v=ymTz0pnodVM>

Conferences

4th International Conference on Cartography and GIS

18-22 June, 2012

Albena - summer resort on Black Sea, Bulgaria.

Brisbane International Geospatial Forum 2012

8 - 10 July

'Global Connections through Mapping'

Brisbane, Australia

Hosted by Mapping Sciences Institute, Australia, the Australian and New Zealand Map Society and the International Map Trade Association. A combined Conference and Trade Show.

Show. Further information:

(website) www.imtamaps.org ; (email) imtaaspac@chariot.net.au

Exploration and Mapping in Mining 2012

Data management and integration

17th – 19th July 2012, Duxton Hotel, Perth

The United Nations/Vietnam Workshop on Space Technology Applications for Socio-Economic Benefits Workshop

10 to 14 October 2011

Hanoi, Vietnam,.

Office for Outer Space Affairs

United Nations Office at Vienna

Vienna International Centre

P.O. BOX 500

A-1400 Vienna, AUSTRIA

Phone: (+43 1) 26060- 4948

E-mail: unpsa@unvienna.org

<http://www.oosa.unvienna.org/oosa/en/SAP/act2011/Vietnam/index.html>

Interexpo

17-19 April 2012

Novosibirsk

Geo-Siberia-2012", the 8th international congress and specialized exhibition in the field of geodesy, cartography, geology, geophysics, land management, land and property cadastres, geoinformation, Earth remote sensing, forestry management, environmental monitoring, specialized instrument-making, which will be held on 17-19 April 2012 in Novosibirsk, Russian Federation. "Interexpo Geo-Siberia-2012" is the former "Geo-Siberia" in new format.

From September 2011 the exhibition and scientific congress "Geo-Siberia" have been renamed as "Interexpo Geo-Siberia" that more exactly reveals the content and spirit of this forum.

<http://geosiberia.ssga.ru>

Third Open Source GIS Summer School,

July 9-13th, 2012

Girona, Spain

Sponsored by The GIS and Remote Sensing Centre (University of Girona, Spain),

Nottingham Geospatial Institute (University of Nottingham, UK) and OpenGeo

<http://www.sigte.udg.edu/summerschool2012/>

Mountain Cartography Workshop

1 and 5 September 2012

New Zealand near Taurewa,.

The theme of the Workshop is Mapping Mountain Dynamics

[cfp](#), [New Zealand](#), [workshop](#)

The Graphical Web& SVG Open 2012 Conference

The Graphical Web and SVG Open 2012 conference takes place from September 11 to 14 2012 at ETH Zurich (Hoenggerberg campus), Zurich, Switzerland.

<http://www.graphicalweb.org/>

CfP: LBS 2012 in Munich

9th International Symposium on Location-Based Services,

October 16 to 18, 2012.

Munich, Germany,

The 23rd International CODATA Conference-

Open Data and Information for a Changing Planet

Taipei 28th-31st October 2012.

Go to link:> <http://www.codata2012.com/>

The influence of SOA on Map Production and GeoBusiness

November, 19th to 23th 2012 in Vienna,
Austria.

http://www.cartography.at/icamapprodution/?Upcoming_Events

SOMAP 2012, the Symposium on Service-Oriented Mapping

Vienna from November 22-23, 2012.

The ICA Commission on Map Production and Geobusiness and our host, the Austrian Federal Office for Metrology and Surveying, is pleased to invite You to the International Symposium on Service-Oriented Mapping in Vienna from November 22nd to 23rd 2012.

<http://somap.cartography.at>

9th International Conference of the African Association of Remote Sensing of the Environment (AARSE) – AARSE 2012

On

*Earth Observation & Geo-information Sciences for Environment and Development in Africa:
Global Vision and Local Action Synergy*

The conference will be held in El Jadida, Morocco, at the Faculty of Science, Chouaib Douakkali University from October 29 to November 2, 2012

www.aarse2012.org

MIWAI 2012

December 26-28, 2012

The 6th Multi-Disciplinary International Workshop on Artificial Intelligence (MIWAI 2012)
Ho Chi Minh City, Vietnam,.

The MIWAI-2012 invites papers on advances in AI techniques and related fields, e.g., GIS, neural networks, decision trees, genetic algorithms, fuzzy logic, etc., for climate change.

Go to link:> <<http://www.hcmuaf.edu.vn/>>

NOTE: If you are involved in a workshop, symposium or conference related to cartography please send me brief details for the newsletter.
