

International Cartographic Association
Association Cartographique Internationale



Commission on Education and Training

eCET

Newsletter

Cartography matters

[Http://azarus.elte.hu/cet/](http://azarus.elte.hu/cet/)

May 2011

Quote

The nice thing about standards is, there are so many to choose from.

C. Northcote Parkinson

<http://www.gunnar.cc/quotes.html>

Cartography in the Media

Outrage over TomTom speed traps for motorists

The Age

Asher Moses

May 6, 2011 - 3:59PM

Some European police departments are getting tips for traffic cameras placement, and those tips are coming right from inside the cars of drivers.



TomTom Australia says it is planning to sell GPS data collected about its customers' journeys to road authorities and private companies even after it was forced to apologise when that same data was used by Dutch authorities to set speed traps.

The revelations, [revealed](#) in *The Australian Financial Review* today, have caused outrage among privacy campaigners and lobby groups who believe it is now necessary for electronic devices to come with special stickers saying whether they are going to track your location and be sold to marketers.

But TomTom Australia's vice-president of marketing, Chris Kearney, in a phone interview, rejected the privacy concerns and claims that TomTom was "tracking" users. He conceded TomTom was collecting real-time "timestamped GPS data" of users' journeys but said there were no privacy risks because the data was decoupled from the individual users.

GO TO LINK: >

<http://www.theage.com.au/digital-life/cartech/outrage-over-tomtom-speed-traps-for-motorists-20110506-1ebc2.html>

'U' Researchers To Map The Arctic

May 6, 2011 6:57 AM



(credit: SLIM ALLAGUI/AFP/Getty Images)

MINNEAPOLIS (AP) – A team of University of Minnesota researchers who are admired in academic circles for their work mapping Antarctica, are now expanding their work to include the Arctic.

The university says the work is part of a nearly \$4 million, five-year cooperative agreement with the National Science Foundation.

Led by Paul Morin in the university's College of Science and Engineering, the Polar Geospatial Center will now provide support and training for other researchers studying the Earth's poles.

GO TO LINK: >

<http://minnesota.cbslocal.com/2011/05/06/u-researchers-to-map-the-arctic/>

NASA Releases Sky-Mapping Archive

10:17 AM, Apr 16, 2011



LOS ANGELES (USA TODAY) - NASA has released a trove of data from its sky-mapping mission, allowing scientists and anyone with access to the Internet to peruse millions of galaxies, stars, asteroids and other hard-to-see objects. Many of the targets in the celestial catalog released online this week have been previously observed, but there are significant new discoveries. The mission's finds include more than 33,000 new asteroids floating between Mars and Jupiter and 20 comets.

GO TO LINK: >

<http://www.wltx.com/news/watercooler/article/133245/363/NASA-Releases-Sky-Mapping-Archive>

How travellers can unlock the power of Google

April 14, 2011 - 4:45PM



.....Google Maps offers a wealth of information. Type a place name into the Google Maps search box, click on the result that matches your destination, and you'll get a map on the right hand side of the page and photos on the left. You can click for directions or, under "More", get the mesmerising "Street View". Street View is available in 25 countries, but there are still some places where you'll have to stick with still photos, like Darwin.

Click "Search nearby" in Google Maps and you can find just about anything in the destination. Type in "museum" or "pizza" and listings pop up. Type in "hotels" and you'll get options for lodgings, check-in and check-out dates, along with a small photo, the hotel's address and phone number, a price, and reviews.

Using My Maps, you can also map out your walking tour and see how long it is in kilometres; add your favourite hotels and eateries as a guide for someone else; and after the trip, turn that map into a scrapbook with text, photos and videos you collected along the way. There's a tutorial to get you started.

GO TO LINK: >

<http://www.theage.com.au/travel/traveller-tips/how-travellers-can-unlock-the-power-of-google-20110401-1crfj.html>

Now copyright-free maps of States, districts, panchayats

S. Anandan

The Hindu

Online edition of India's National Newspaper

Friday, Apr 15, 2011

Kochi: Even as the "Malayalam Loves Wikipedia" campaign, launched to expand the knowledge repositories of Malayalam Wikipedia with copyright-free Malayalam-related photographs, continues to evoke overwhelming response from Wiki users and contributors, a project meant to make available online free-to-use national map and maps of States, districts and panchayats is making silent, but significant strides.

The ambitious project was taken up by Bangalore-based software engineer and Wiki contributor Rajesh Odayanchal. Other contributors, Ajay Kuyiloor, Naveen and Jason Nedumbala, joined him in the venture. The team crossed a milestone when a copyleft [free of copyright] map of India — to be further fine-tuned — and maps of the districts of Kerala and some States were readied.

“Our aim is to prepare maps of all Indian States up to ward-level, which is a humungous task.

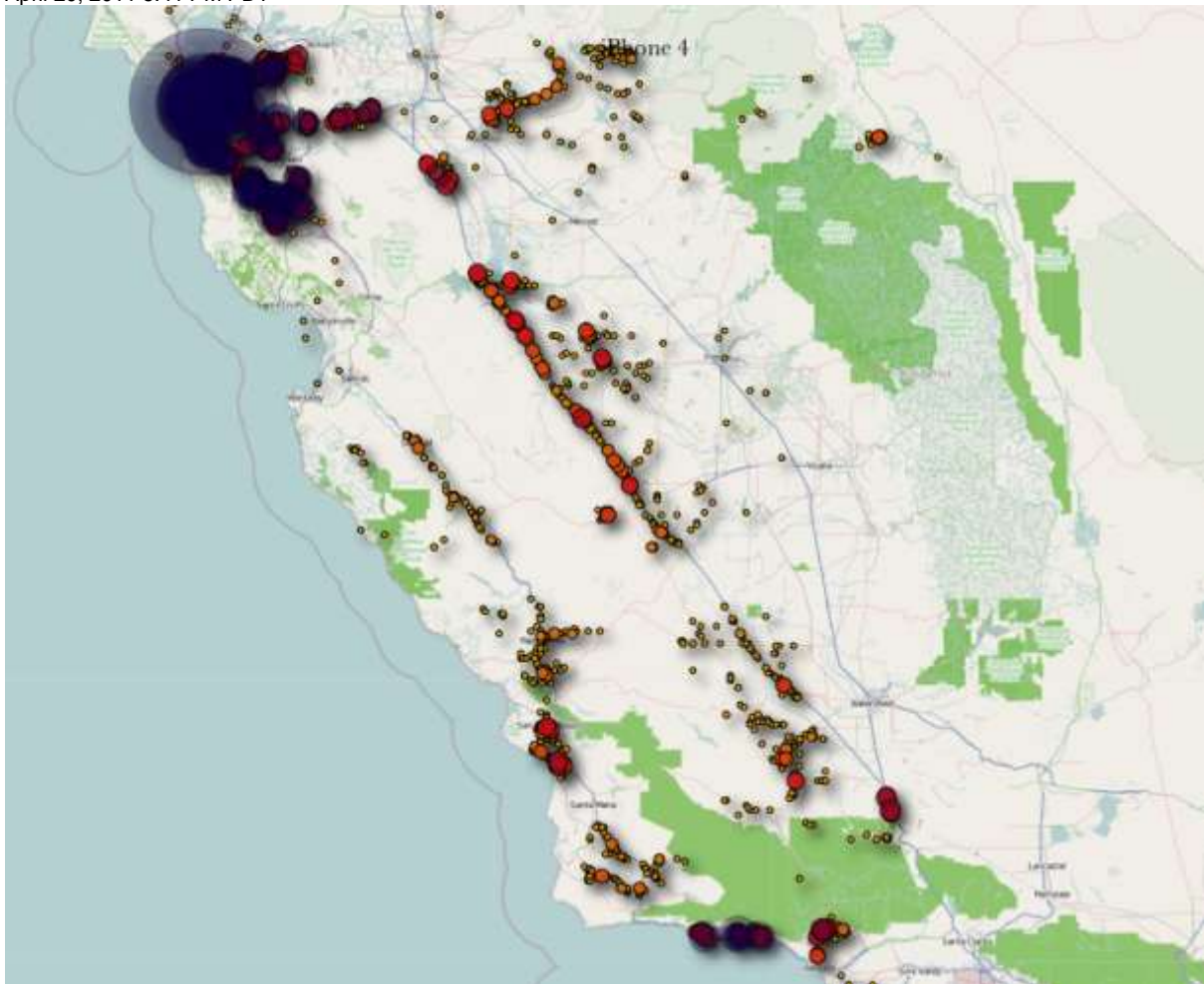
GO TO LINK: >

<http://www.hindu.com/2011/04/15/stories/2011041558071600.htm>

Your iPhone's watching you. Should you care? (FAQ)

by [Josh Lowensohn](#) and [Elinor Mills](#)

April 20, 2011 6:41 PM PDT



A peek at location data stored on an iPhone.
(Credit: Josh Lowensohn/CNET)

Read more: http://news.cnet.com/8301-13579_3-20055885-37.html#ixzz1K8V9rAab

Researchers announced today that they found what look like secret files on the [iPhone](#) that [track user location](#) and store it on the device, without the permission of the device owner. It's unclear what the data is used for and why Apple has been collecting it in iOS products that carry a 3G antenna for nearly a year now.

Alasdair Allan, senior research fellow in astronomy at the University of Exeter, and writer Pete Warden, who discovered the log file and created a tool that lets users see

a visualization of that data, say there's no evidence of that information being sent to Apple or anybody else. Even so, the pair note that the data is unencrypted, giving anyone with access to your phone or computer where backups may be stored a way to grab the data and extrapolate a person's whereabouts and routines.

GO TO LINK: >

http://news.cnet.com/8301-13579_3-20055885-37.html#ixzz1K8VOqyWc

http://news.cnet.com/8301-13579_3-20055885-37.html

Microsoft launches StreetView rival in Europe

12 April 2011 Last updated at 15:11 GMT

Microsoft is launching its own version of Google's StreetView - dubbed Streetside - across Europe.

Cars fitted with cameras have begun taking pictures around London and will start mapping major cities on the continent next month.

The service is already available in 56 US towns and cities.

Microsoft has been keen to avoid the privacy concerns that dogged Google's service but said that it does plan to gather wi-fi data.



Microsoft is taking pictures in conjunction with mapping partner Navteq

GO TO LINK: >

<http://www.bbc.co.uk/news/technology-13047454>

Google Earth Builder For Businesses To Customize Maps On The Cloud

By [Rue Liu](#) on Wed Apr 20th, 2011

Google has announced its newest mapping product targeted at the enterprise market called Google Earth Builder. The company stands firm at the top of mapping, with Google Maps arguably the most popular online mapping site and with Google Earth downloaded over 700,000,000 times. Google Earth Builder takes the popularity of Google Maps and Google Earth and lets businesses use this technology to build and store their own geospatial data in the Google cloud.

GO TO LINK: >

[http://www.slashgear.com/google-earth-builder-for-businesses-to-customize-maps-on-the-cloud-](http://www.slashgear.com/google-earth-builder-for-businesses-to-customize-maps-on-the-cloud-20147339/?utm_source=feedburner&utm_medium=feed&utm_campaign=Feed%3A+slashgear+%28SlashGear%29)

[20147339/?utm_source=feedburner&utm_medium=feed&utm_campaign=Feed%3A+slashgear+%28SlashGear%29](http://www.slashgear.com/google-earth-builder-for-businesses-to-customize-maps-on-the-cloud-20147339/?utm_source=feedburner&utm_medium=feed&utm_campaign=Feed%3A+slashgear+%28SlashGear%29)

Azerbaijani President signs order on publication of National Atlas of Azerbaijan Republic

Today.az - Covering Azerbaijani Inside and Out
Thursday, April 21st, 2011 11:33

Azerbaijani President Ilham Aliyev has signed an order on the publication of the National Atlas of the Republic of Azerbaijan, the Azerbaijani President's official website reported.



GO TO LINK: >

<http://www.today.az/news/society/84819.html>

Magellan's eXplorist Pro 10 does GIS data collection for \$700, makes Google maps green with envy

By [Michael Gorman](#) posted Apr 15th 2011 5:35AM



It's been quite awhile since we last saw a [GIS unit from Magellan](#), but the company is once again dipping its toes in the cold, clear waters of GPS data collection. Running [Windows Mobile 6.5](#) (so it'll play nice with existing GIS data collection programs) and powered by dual AA disposables, the eXplorist Pro 10 has a three-inch 240 x 400 color transreflective display

-- so on-screen site surveying is as easy in direct sunlight as it is in the dark of night. The device fears neither raincloud nor Super Soaker and comes with a 533 Mhz CPU, 128MB of RAM, 4GB of onboard memory, and room for more bits and bytes via microSD. A 3.2 megapixel camera, three-axis compass, pressure altimeter, and a barometer round out the geographic measurement gear, and a Bluetooth radio is included for connecting peripherals should the existing array of tools be insufficient for your mapmaking needs. On sale now for \$699.99, the Pro 10 is aimed squarely at the pro crowd (shocking, we know), but [Google's](#) pretty much made casual cartography unnecessary, anyway. Press release is after the break.

GO TO LINK: >

http://www.engadget.com/2011/04/15/magellans-explorist-pro-10-does-gis-data-collection-for-700-m/?utm_source=feedburner&utm_medium=feed&utm_campaign=Feed%3A+weblogsinc%2FEngadget+%28Engadget%29

Crowd Sourcing

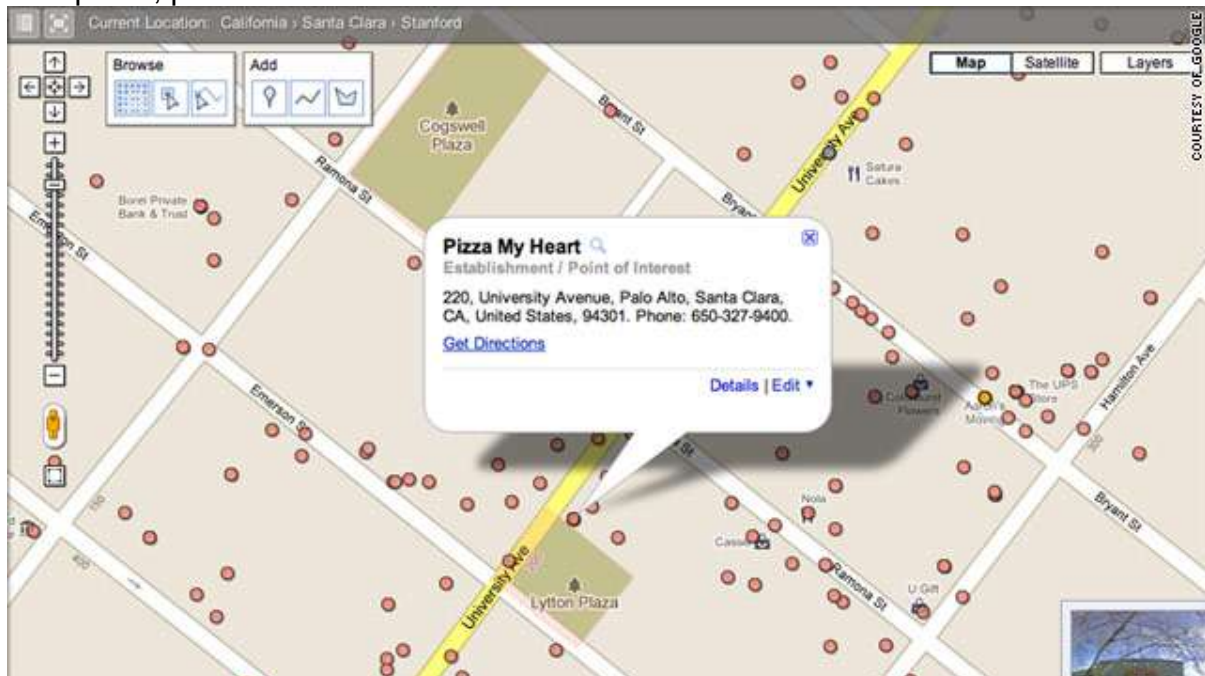
Google users become editors of U.S. map

By **Jennifer Van Grove**, Mashable
April 19, 2011 7:59 a.m. EDT | CNN Tech

Nearly three years after first releasing [Map Maker](#), Google is finally ready to let its users edit and add to the map of the United States.

[Google Map Maker](#) is a parallel version of Google Maps that accepts user contributions and map edits. When approved by moderators, edits are published to Google Maps and are pushed live to all users.

The Map Maker tool has been used in 183 countries and regions around the world, and users have been actively adding the next level of detail -- roads, universities, bike paths, pools and the like -- to their towns.



Google is allowing its users to edit and add to the map of the United States.

GO TO LINK: >

http://www.cnn.com/2011/TECH/web/04/19/google.editors.maps.mashable/index.html?eref=rss_tech&utm_source=feedburner&utm_medium=feed&utm_campaign=Feed%3A+rss%2Fcn_tech+%28RSS%3A+Technology%29

Online Mapping Shows Potential to Transform Relief Efforts

By [STEVE LOHR](#)

Published: March 28, 2011

Digital maps assembled by far-flung networks of online volunteers through the process called crowd-sourcing have been powerful tools in humanitarian relief work in the last few years.



In Japan after the earthquake and tsunami, crowd-sourced maps have helped give local relief workers a clearer picture of the situation on the ground as they set priorities for food, shelter and sanitation services. The Web maps are also being used to track the fighting in Libya and the needs of refugees fleeing that conflict. But a new report says that the potential of online mapping to transform humanitarian services will not be realized without better coordination and communication between digital volunteers and veteran agencies in the relief field, like the [United Nations](#) and the Red Cross.

GO TO LINK: >

http://www.nytimes.com/2011/03/28/business/28map.html?_r=1&ref=disasters

Expert Meeting: Crowdsourcing Mapping for Preparedness and Emergency Response

The United Nations Office for Outer Space Affairs is aiming at bringing together 30 leading experts representing crowd-sourcing communities, space agencies, disaster management and civil protection agencies, NGOs, private companies, and regional and international organizations. If you are an expert currently working in any of the relevant areas (disasters, crowd-source mapping, space-based information) and would like to participate in the meeting please do consider applying. We are looking for experts that either already work with crowdsourcing mapping or have been considering how their work could leverage on this opportunity (specifically for disaster risk reduction and emergency and humanitarian response).

For this first expert meeting we will be focusing on getting a feedback from experts from the disaster management community regarding how information has to be generated and/or tailored to ensure that it can be used effectively; on novel potential applications and products which could be elaborated by the crowd-sourcing communities that can support preparedness and emergency response, and; how to build upon existing solutions to facilitate the sharing of information to the emergency management community. Additionally, we will also be discussing strategies on how to adequately address intellectual property and copyright concerns.

This programme is still being elaborated and if you would like throw in your thoughts please join us at the following Google Group:

<http://groups.google.com/group/space-based-information-for-crowdsourcing-mapping>

Thanks again for the extraordinary interest in this event and we are sure the end result will benefit the work we all carry out together.

And please do forward this e-mail to any expert you personally know and that you think should be involved in this event

Regards

David

David STEVENS
Programme Coordinator
UN-SPIDER
United Nations Office for Outer Space Affairs
Vienna - Beijing - Bonn
Tel.: +43-1-260605631
Skype: tazarkount - Mobile +43 - 699 1459-5631
E-Mail david.stevens@unoosa.org

Latest UN-SPIDER Newsletter - <http://www.un-spider.org/newsletter>

GO TO LINK: >

<http://www.un-spider.org/crowdsourcing-mapping>

The Geospatial Revolution

If you have ever wondered where our industry is today, and where it is going? Have a look at this series of videos produced by Penn State University. They are truly excellent and, together, they are an educational resource for use by all those involved in the new cartography.

The Geospatial Revolution



GO TO LINK: >

<http://www.youtube.com/watch?v=ZdQjc30YPOk&feature=relmfu>

The Geospatial Revolution – Episode 1



GO TO LINK: >

<http://www.youtube.com/watch?v=poMGRbfgp38>

The Geospatial Revolution – Episode 2



GO TO LINK: >

<http://www.youtube.com/watch?v=GXS0bsR0e7w&feature=relmfu>

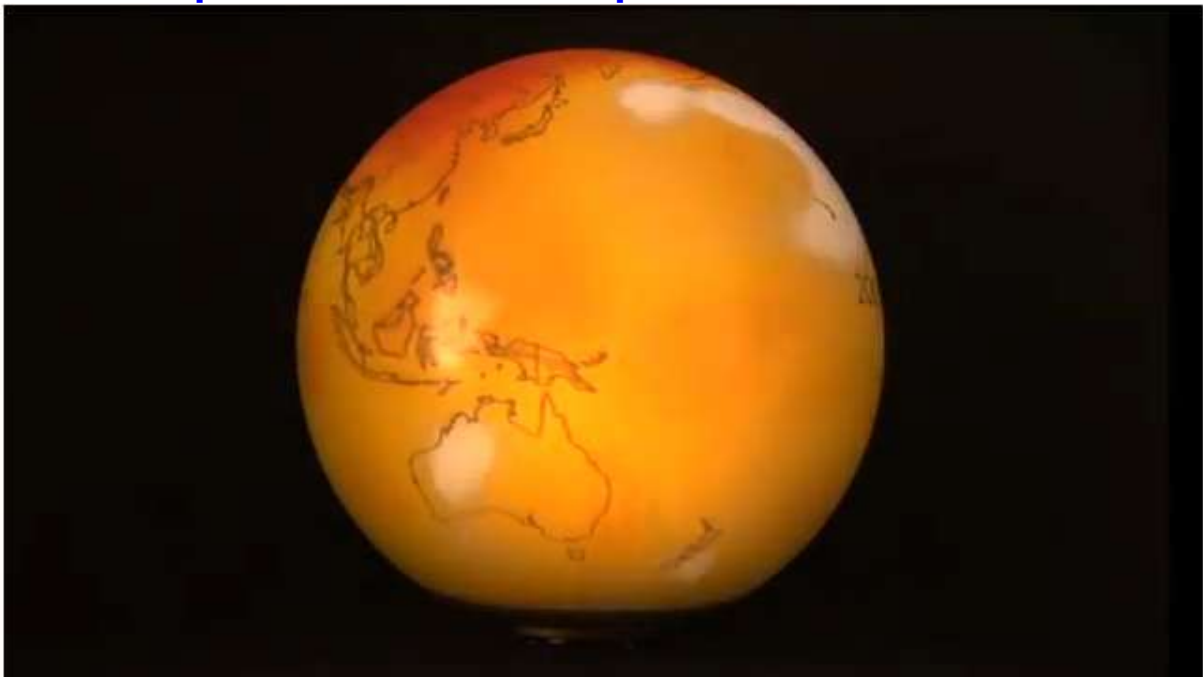
The Geospatial Revolution – Episode 3



GO TO LINK: >

<http://www.youtube.com/watch?v=OePOK6nzcaY&feature=relmfu>

The Geospatial Revolution – Episode 4



GO TO LINK: >

<http://www.youtube.com/watch?v=9F7z9LLYxf8&feature=relmfu>

The Making of a Cartographer

Cartographer

Applies scientific and mathematical principles to design, prepare and revise maps and charts.

Tasks

- designs and compiles map manuscripts using digital and graphical source material, including aerial photographs, satellite imagery, survey documents, existing maps and records, reports and statistics
- advises surveyors and other professionals on the data requirements for map production and on the aesthetic, technical and economic considerations of scales, details to be illustrated, place names and reproduction techniques
- supervises and coordinates the work of cartographic associates in the production and reproduction of maps
- may produce digital elevation models
- may specialise in cadastral (land tenure) or topographical mapping, or maps for specific purposes such as town planning, geology and hydrography

GO TO LINK: >

<http://www.visabureau.com/australia/jobs/cartography-jobs-australia.aspx>

Cartography

Cartography (from [Greek](#) *chartis* = map and *graphein* = write) is the study and practice of making [maps](#). Combining science, [aesthetics](#), and technique, cartography builds on the premise that reality can be modeled in ways that communicate spatial information effectively.

The fundamental problems of traditional cartography are to: [\[citation needed\]](#)

- Set the map's agenda and select traits of the object to be mapped. This is the concern of map editing. Traits may be physical, such as roads or land masses, or may be abstract, such as [toponyms](#) or political boundaries.
- Represent the terrain of the mapped object on flat media. This is the concern of [map projections](#).
- Eliminate characteristics of the mapped object that are not relevant to the map's purpose. This is the concern of [generalization](#).
- Reduce the complexity of the characteristics that will be mapped. This is also the concern of generalization.
- Orchestrate the elements of the map to best convey its message to its audience. This is the concern of [map design](#).

Modern cartography is closely integrated with geographic information science (GIScience) and constitutes many theoretical and practical foundations of [geographic information systems](#).

GO TO LINK: >

<http://en.wikipedia.org/wiki/Cartography>

Geojargon Survey Results and Analysis

Wednesday, April 13th 2011

[8 Comments and 4 Reactions](#)

By [Adena Schutzberg](#)

Summary: *During March, Directions Magazine conducted a “geojargon” survey. What is “geojargon”? We asked readers to look at 35 geospatial terms and*

determine how well they knew the meaning of each. Executive Editor Adena Schutzberg reports on the results and teases out some trends and insights.

We left our “geojargon” survey open for two weeks in March. We asked readers to look at 35 geospatial terms and determine how well they knew the meaning of each. A total of 538 respondents anonymously assigned each term to one of four categories ([view results](#)):

- I'm not familiar with this word
- I've seen/heard this word, but don't know what it means
- I think I know what this means, but I'm not sure
- I know the meaning of this word

Well-known Terms

I did some simple analysis, first on the raw data. What were the terms we felt we knew best? The following terms were assigned to the “I know the meaning of this word” category by more than 90% of respondents:

- geocoding
- open source
- spatial analysis
- topology
- schema
- Web service
- raster
- accuracy

GO TO LINK: >

<http://www.directionsmag.com/articles/geojargon-survey-results-and-analysis/173779>

Historical Mapping

Earliest known depicting the voyage of Map Magellan

1. [7.30 - ABC](#)

Australian Broadcasting Corporation.

Broadcast: 24/05/2011.

Reporter: Rebecca Baillie.

The earliest known map depicting the voyage of Magellan has been found in South America, and it's Dutch owner is here in Australia ... He is now certain that European map-maker Lorenz Fries hand drew it in Strasbourg in 1525, just after Portuguese explorer Ferdinand Magellan circumnavigated the world.



GO TO LINK: >

<http://www.abc.net.au/7.30/content/2011/s3225919.htm>

“America” map

On April 25, 1507, German cartographer Martin Waldseemueller produced a world map containing the first recorded use of the term "America," in honor of Italian navigator Amerigo Vespucci.

GO TO LINK: >

<http://www.digtriad.com/news/watercooler/article/171885/176/Today-In-History---April-25>

Education

Coastline paradox

Coastline paradox

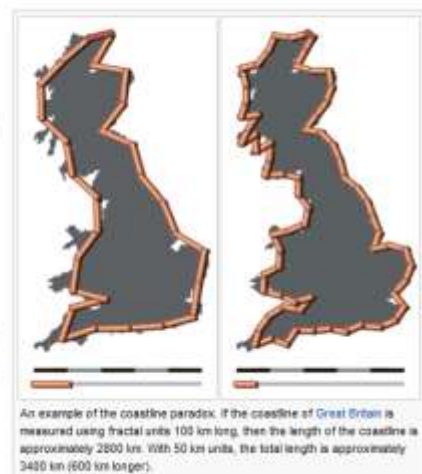
From Wikipedia, the free encyclopedia

The **coastline paradox** is the counterintuitive observation that the coastline of a landmass does not have a well-defined length. This results from the fractal-like properties of coastlines.^{[1][2]} It was first observed by Lewis Fry Richardson.

More concretely, the length of the coastline depends on the method used to measure it. Since a landmass has features at all scales, from hundreds of kilometers in size to tiny fractions of a millimeter and below, there is no obvious limit to the size of the smallest feature that should not be measured around, and hence no single well-defined perimeter to the landmass. Various approximations exist when specific assumptions are made about minimum feature size.

For practical considerations, an appropriate choice of minimum feature size is on the order of the units being used to measure. If a coastline is measured in *miles*, then small variations much smaller than one mile are easily ignored. To measure the coastline in inches, tiny variations of the size of inches must be considered. However, at scales on the order of inches various arbitrary and non-fractal assumptions must be made, such as where an estuary joins the sea, or where in a broad tidal flat the coastline measurements ought to be taken.

Extreme cases of the coastline paradox include the fjord-heavy coastlines of Norway, Chile and the Pacific Northwest of North America. From the southern tip of Vancouver Island northwards to the southern tip of the Alaska Panhandle, the convolutions of the coastline of the Canadian province of British Columbia makes it over 10% of the entire Canadian coastline—25,725 km vs 243,042 km^[clarification needed] over a linear distance of only 965 km, including the maze of islands of the Arctic archipelago.^[3]



An example of the coastline paradox. If the coastline of Great Britain is measured using fractal units 100 km long, then the length of the coastline is approximately 2800 km. With 50 km units, the total length is approximately 3480 km (600 km longer).

GO TO LINK: >

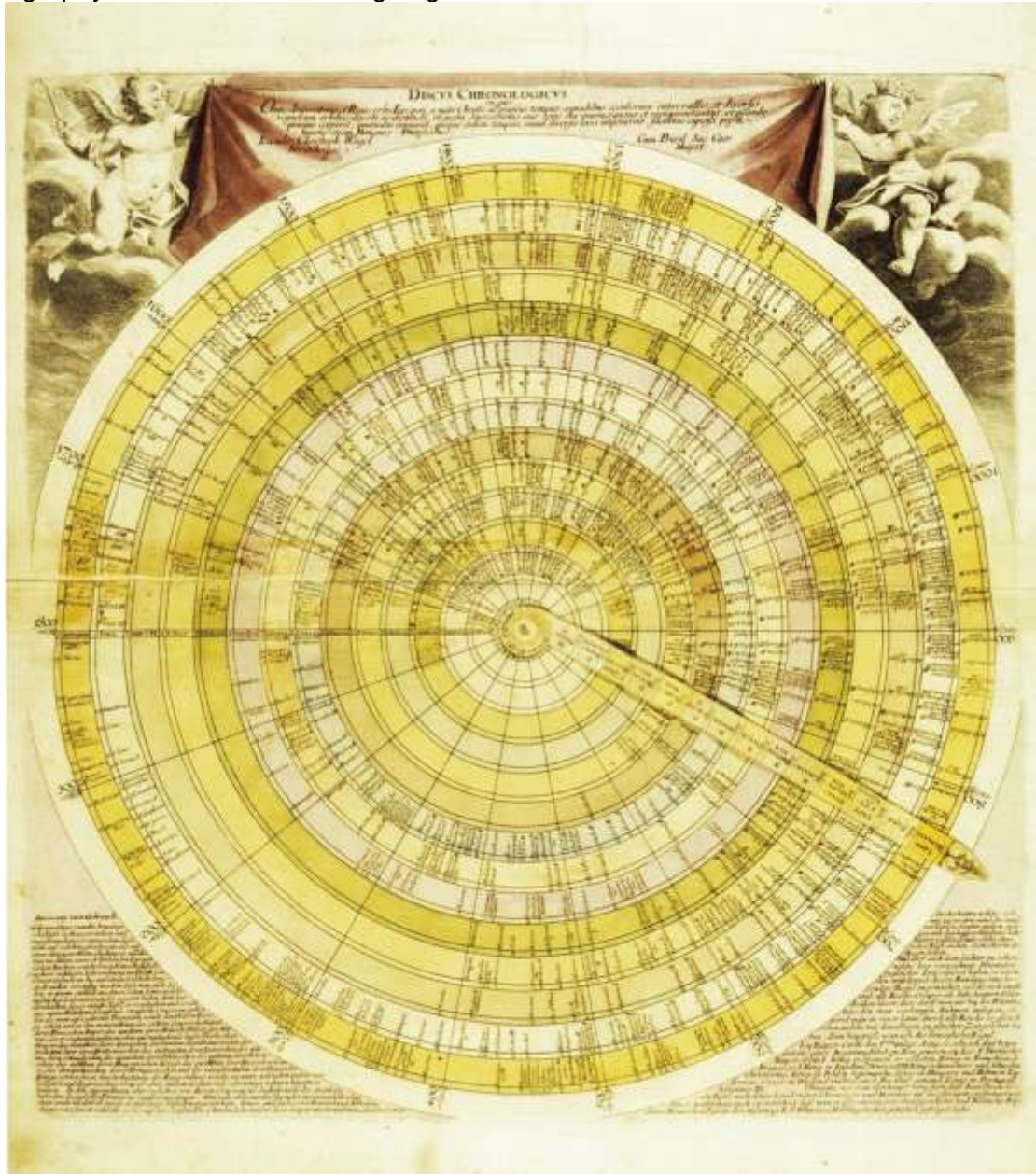
http://en.wikipedia.org/wiki/Coastline_paradox

Publications

Creative Cartography: 7 Must-Read Books on Maps

by [Maria Popova](#)

From tattoos to Thomas More's Utopia, or what Moby Dick has to do with the nature of time. We're obsessed with [maps](#) — a fundamental sensemaking mechanism for the world, arguably the earliest form of standardized information design, and a relentless source of visual creativity. Today, we turn to seven fantastic books that explore the art and science of cartography from seven fascinating angles.



GO TO LINK: >

<http://www.brainpickings.org/index.php/2011/01/07/must-read-map-books/>

Mercator Revisited



In celebration of the 500th anniversary of the birth of Gerard Mercator, we are delighted to announce the international conference *'Mercator Revisited – Cartography in the Age of Discovery'*. The conference will take place from April 25th till 28th, 2012 in the city of Sint-Niklaas, Belgium, 15 km from the town of Rupelmonde where *Gerard de Kremer* was born on the 5th of March 1512. The conference focuses on the place of cartography in general and of Mercator in specific in the 16th century. This Age of Discovery presented mapmakers with both unprecedented opportunity and scientific obligation to collect, record and categorise the world 'as it was'. At the same time, the greatest mapmakers of the era were also scientists, craftsmen and humanists influenced by international politics, science and philosophy. Their maps not only reflect the factual discoveries of the time but also the environments within which the maps were produced.

Mercator Revisited – Cartography in the Age of Discovery

25-28 April, 2012

International conference

Sini-Niklaas, Belgium

Contact: contact@mercatorconference2012.be

For more information please consult the conference website:

GO TO LINK: >

www.mercatorconference2012.be

Conferences

ISPRS Joint Workshop on 3D City Modelling & Applications

First call for papers and Announcement-ISPRS Joint Workshop on 3D City Modelling & Applications which will be held on 26-27 June, 2011 in Wuhan University, P.R. China.

In case of questions, please contact : 3dcma@lmars.whu.edu.cn

For more information please consult the workshop website:

www.lmars.whu.edu.cn/3DCMA2011.html

Maps for the future: Children, Education and Internet"

Joint ICA Symposium

with a Special Session dedicated to Cartography for Early Warning and Crisis Management

Date: June 30- July 1, 2011

Venue: University of Orleans, France

<http://lazarus.elte.hu/jointsymposium2011/>

25th International Cartographic Conference

3–11 July 2011

Paris, France

Open to researchers, engineers, students, data producers and software suppliers, the ICC 2011 will be held from 4th to 8th July 2011 at the Palais des Congrès in Paris, with simultaneous proceedings in eight meeting rooms. This conference will consider the most wide-ranging issues involving cartography and geomatics. In addition to oral presentations, sessions will be organized for the presentation of work in the form of poster displays.

<http://www.icc2011.fr/>

The Surveying and Spatial Sciences Conference

November 21-25, 2011

Wellington, New Zealand.

It is a joint conference hosted by the New Zealand Institute of Surveyors and the Surveying and Spatial Sciences Institute. Please register your interests at <http://sssc2011.org>

1st European State of the Map Conference - Call for Papers

The Research Group Cartography and the Austrian OpenStreetMap community are pleased to invite you to contribute to the 1st European State of the Map Conference of the OpenStreetMap project, held July 15-17 in Vienna, Austria. After 4 successful and well-organised International State of the Map conferences, we are proud to offer an additional European edition of this well-received event. In addition to former OSM-conferences we will establish a specific focus on research with a relation to OpenStreetMap.

Attached you'll find the Call for Papers, which will be open until Monday, February 28. Please forward this mail to anyone interested.

For further information please visit: <http://www.sotm-eu.org/cfp>

MODSIM 2011,

International Congress on Modelling and Simulation,

12-16 December,

Perth, Australia,

mssanz.org.au/modsim2011

«InterCarto-InterGIS 17».

SUSTAINABLE DEVELOPMENT OF TERRITORIES:

GIS THEORY AND PRACTICE

December 14-15, 2011

Belokurikha, Altai Krai (Russia)

December 18-19, 2011

Denpasar, Bali (Indonesia)

<http://conf.nsc.ru/intercarto17>.

Mercator Revisited – Cartography in the Age of Discovery

25-28 April, 2012

International conference

Sini-Niklaas, Belgium

Contact: contact@mercatorconference2012.be

For more information please consult the conference website:

www.mercatorconference2012.be

NOTE: If you are involved in a workshop, symposium or conference related to cartography please send me brief details for the newsletter.

Crisis Mappers Network

The Crisis Mappers Network

Leveraging mobile platforms, computational and statistical models, geospatial technologies, and visual analytics to power effective early warning for rapid response to complex humanitarian emergencies.

The **International Network of Crisis Mappers (CM*Net)** is the the largest and most active international community of experts, practitioners, policymakers, technologists, researchers, journalists, scholars, hackers and skilled volunteers engaged at the intersection between humanitarian crises, technology and crisis mapping.

The Crisis Mappers Network was launched by 100 Crisis Mappers at the first International Conference on Crisis Mapping in 2009. As the world's premier crisis mapping hub, CM*Net catalyzes communication and collaboration between and among crisis mappers with the purpose of advancing the study and application of crisis mapping worldwide.

GO TO LINK: >

<http://www.crisismappers.net/>

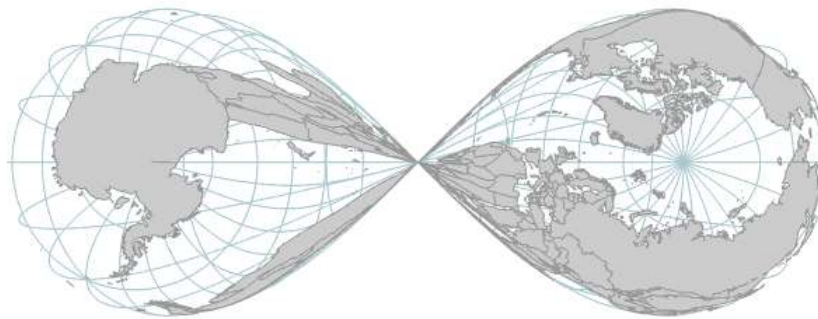
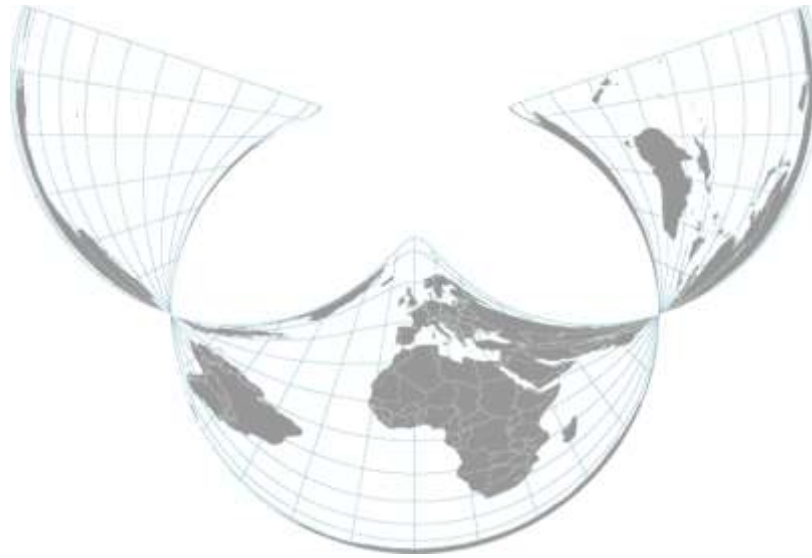
Cartographer's Guild



GO TO LINK: >

<http://www.cartographersguild.com/forum.php>

Accidental Map Projections



GO TO LINK: >

<http://www.cartogrammar.com/blog/accidental-map-projections-ii/>