



Commission on Education and Training

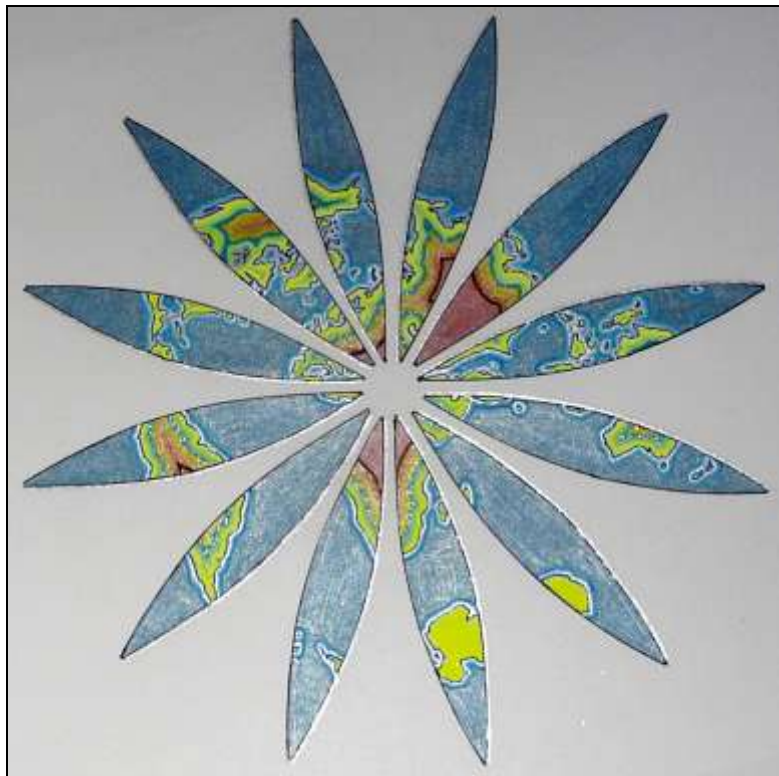
<http://lazarus.elte.hu/cet/>

December 2011 Newsletter

An occasional electronic newsletter from the Commission.

If you have any brief items of interest then please email them to david.fraser@rmit.edu.au for eCET.

If you have more substantial articles please send them to Igor Drecki at i.drecki@auckland.ac.nz for the ICA newsletter.



A modified Transverse Mercator Projection of oblique latitudes and longitudes with a pole at Jerusalem.

Quotes

“With education comes confidence - and if you are confident you can make decisions based on knowledge not guesswork.” (Rohan Simmons)

Cartography in the media

Mapping studies show scope of *P vivax* malaria burden

Lisa Schnirring ■ Staff Writer
Dec 6, 2011 (CIDRAP News) –

Though global rates of the most deadly form of malaria are declining in Africa, the parasite's less deadly but more difficult-to-treat cousin, *Plasmodium vivax*, has a firm foothold in many parts of South Asia and Latin America, according to new mapping studies.

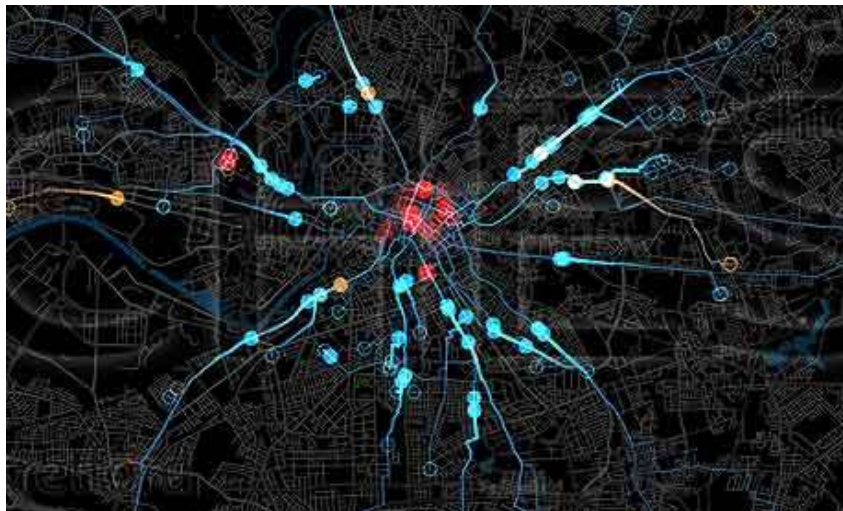
The maps, produced by researchers from the Malaria Atlas Project (MAP) at the University of Oxford, were released yesterday in Philadelphia at the annual meeting of the American Society of Tropical Medicine and Hygiene (ASTMH).

Go to link:>

<http://www.cidrap.umn.edu/cidrap/content/other/news/dec0611malaria.html>

England riots: mapping the distance from home to offence

Was there a riot commute? How far were accused rioters from home? ITO World has helped us map those accused of rioting in August.



UK riots distance mapped in Manchester: ITO World help us map possible routes from home to riots

They were the "riot commuters", people who came from far and wide to take part in - or just watch - the disturbances across England. But did they really exist? How far did people actually travel?

Now we have the first answer: 2.2miles

According to analysis by the UK's top transport data mapping company, [ITO world](http://www.ito-world.com) - based on the Guardian's database of riot-related court records - the average distance from home to where defendants were accused of a riot offence was just over two miles, or a half hour walk.

Go to link:>

<http://www.guardian.co.uk/uk/datablog/2011/dec/05/england-riots-distance-travelled-map?newsfeed=true>

What Antarctica would look like 'naked'... radar mapping shows contours of region in greatest ever detail

- 'It's like we discovered a new continent hidden under the ice,' says British researcher

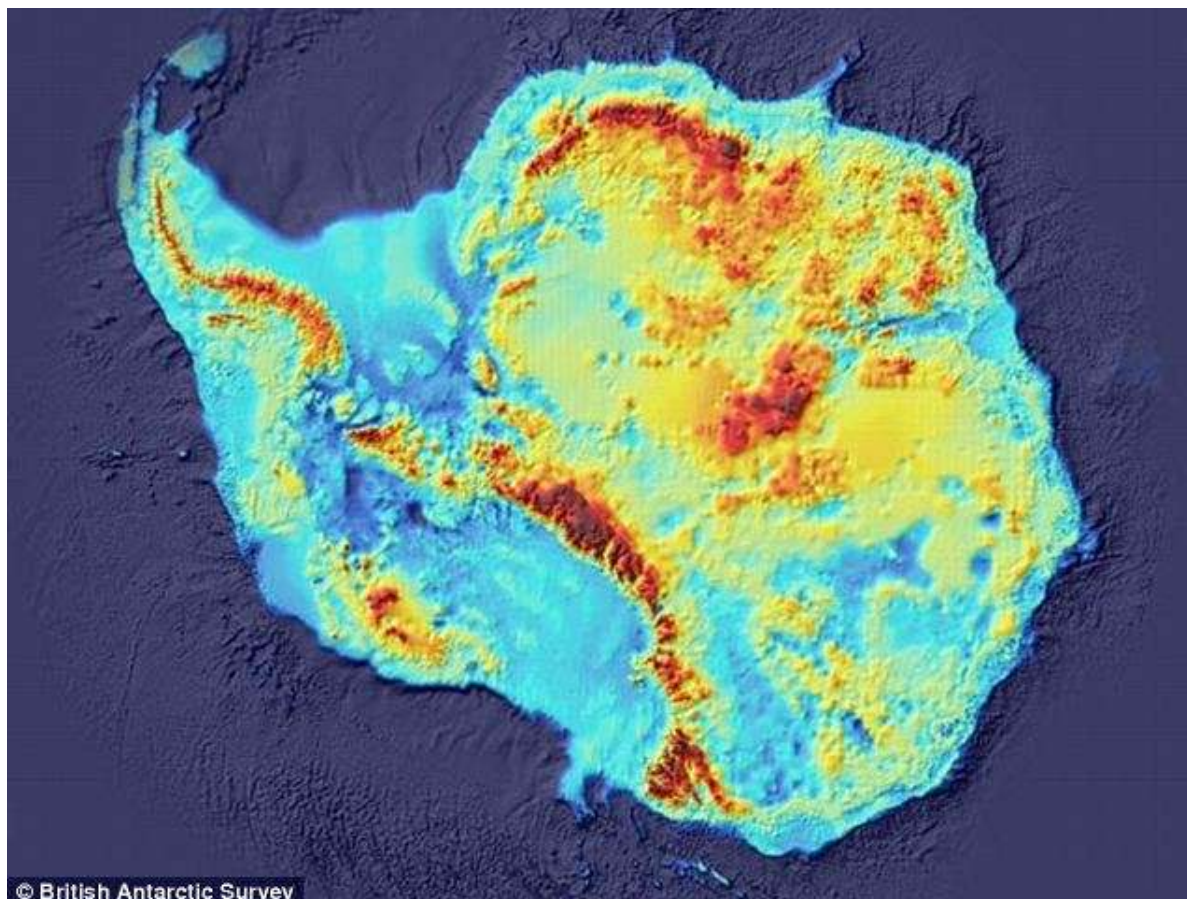
By [Ted Thornhill](#)

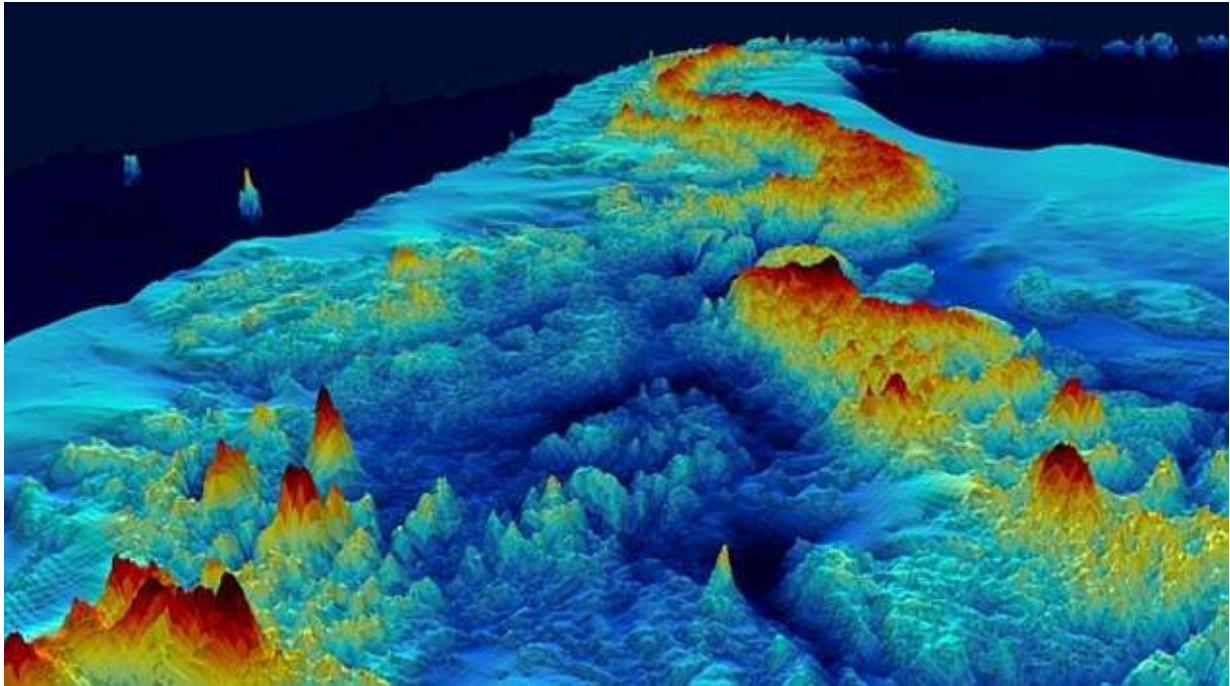
Last updated at 7:38 PM on 6th December 2011

Radar imaging has revealed what Antarctica would really look like if it wasn't covered in ice.

The southern hemisphere's polar region may look fairly flat, but there are actually 9,000ft-high mountains lurking beneath ice that in places is 12,000ft thick.

The British Antarctic Survey (BAS) used decades of research including state of the art techniques to show what the continent would look like 'naked'.





Go to link:>

<http://www.dailymail.co.uk/sciencetech/article-2070635/What-Antarctica-look-like-naked--radar-mapping-shows-mountainous-Alps.html#ixzz1foKWHdDJ>

Industry News

GIS Cloud Featured at Eye on Earth Summit

Esri Platform Supports Collaborative Environmental Problem Solving

By [Esri](#)

Published: Tuesday, Dec. 6, 2011 - 12:06 pm

REDLANDS, Calif., Dec. 6, 2011 -- /PRNewswire/ -- At the Eye on Earth Summit [Esri](#) will describe how cloud GIS is positioned to create an international geospatial platform for sharing environmental data and designing solutions. Also former US president Bill Clinton, Esri president Jack Dangermond, and European Environment Agency (EEA) director Jacquelyn McGlade will join other renowned speakers to present the value of accessible data for international collaboration and decision making.

Go to link:>

<http://www.sacbee.com/2011/12/06/4103995/gis-cloud-featured-at-eye-on-earth.html#ixzz1foLRnPLS>

Avenza Makes Its Mark on the Cartographic Industry Sweeping Top Awards at the Annual IMTA Conference

Developer of the PDF Maps App Seizes the Highest Honor With the IMTA Global Award

TORONTO, Dec 06, 2011 (MARKETWIRE via COMTEX) -- Avenza Systems Inc., producers of MAPublisher(R) cartographic software for Adobe(R) Illustrator(R) and Geographic Imager(R) geospatial tools for Adobe Photoshop(R), celebrates its world-wide recognition from the International Map Trade Association (IMTA) as a top producer of cartographic software and innovative technology winning the coveted 'IMTA Global Award' at its November conference in Bangkok, Thailand.

Go to link:>

<http://www.marketwatch.com/story/avenza-makes-its-mark-on-the-cartographic-industry-sweeping-top-awards-at-the-annual-imta-conference-2011-12-06>

Mapping underground water sources for drip irrigation could change African village life, say Stanford researchers

Investments in small-scale irrigation and geophysical mapping will help relieve food insecurity in sub-Saharan Africa, Stanford researchers say.

Stanford Report, December 5, 2011

BY SARAH JANE KELLER

Rural farmers in sub-Saharan Africa live under risky conditions. Many grow low-value cereal crops that depend on a short rainy season, a practice that traps them in poverty and hunger.

But reliable access to water could change the farmers' perilous situation. Stanford scientists are calling for investments in small-scale irrigation projects and hydrologic mapping to help buffer the growers from the erratic weather and poor crop yields that are expected to worsen with climate change in the region.



Go to link:>

<http://news.stanford.edu/news/2011/december/solar-drip-irrigation-120511.html>

As it happened: London roadside emergency

0708: Adrian Brown

Every day, London's ambulance service answers dozens of emergency call outs to road traffic collisions across the city.

Throughout 6 December, a team of BBC journalists will be alongside ambulance crews as they deal with a typical day on London's roads.

We want to get a sense of the scale of road casualties in the UK. Government estimates put the annual number of road casualties in Great Britain at around 730,000. That works out at about 2,000 killed or injured each day.



Live London crash map

- The live map shows the location and detail of each collision and will be updated as information is received throughout the day.
- Click on a marker to see details of a collision.
- The capital's ambulance crews and paramedics treat an estimated 100 casualties on a typical day.
- The majority of those injured are treated at the scene but take some of them to hospital.
- The map is based on calls received at the London Ambulance Central control room.
- BBC News reporters have joined London ambulance paramedics to get an insight into a typical day on the city's roads. Follow the [LIVE COVERAGE](#) of the day for the latest updates.

Go to link:>

<http://www.bbc.co.uk/news/uk-16030644>

Ghana Measures Forests from Sky and Land

Country Name: Ghana

Author: Steve Zwick

Cash-strapped countries hope to earn carbon credits for saving their rainforests, but many fear their gains will be wiped out by the high cost of documenting the carbon they capture in trees. Ghana hopes to change that by blending satellite technology with ground-truthing in a way that they say is both cheap and effective.

Part Ten: [Ghana Measures Forests from Sky and Land](#) tells the story of efforts in Ghana to blend satellite technology with ground-truthing to lower the cost of measuring forests for REDD.

Off to NASA

While Asante was scouring the Ghanaian countryside, Tutu was at NASA working with Saatchi. They began working with three sets of data – two provided by NASA and one by the Japan Aerospace Exploration Agency (JAXA).

From NASA came visual data generated by the agency's workhorse Landsat and MODIS (Moderate Resolution Imaging Spectroradiometer) projects and Lidar (Light Detection And Ranging) data from its GLAS (Geoscience Laser Altimeter System) project. From JAXA came radar data from its ALOS-Palsar satellite.

Lidar uses lasers the way radar uses radio-waves, and would essentially estimate a forest's height, with the laser's first bounce hitting the top of the forest and the second one hitting the bottom. By combining that data with the images, Saatchi and Tutu were able to get a fairly good idea of what was on the ground.

The process was long and tedious, and involved first filtering and then crunching data that had come from three different sources in three different forms. The filtering involved removing obvious errors, such as outlier data caused by light or sound bouncing at bad angles. The crunching was more of a challenge.

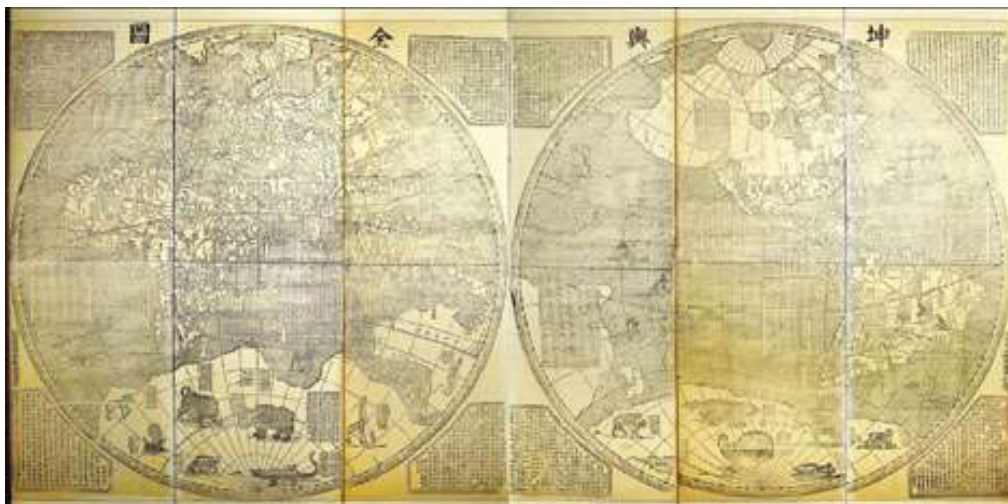
Go to link:>

http://www.ecosystemmarketplace.com/pages/dynamic/article.page.php?page_id=8752§ion=news_articles&eod=1

Putting China on the map

2011-11-29

By Liu Wei (China Daily)



The world map developed by Jesuit father Ferdinand Verbiest during his mission to China in 1674. Photos provided to China Daily

Old maps of China are sought after by collectors due to the nation's increasing importance worldwide. Liu Wei reports.

Nine years ago, London-based art dealer Daniel Crouch could buy a 1584 map of China for 2,000 pounds (\$3,098). It would cost him 5,000 pounds now. "I would be very surprised if it was less than 10,000 pounds in two years' time," he says.

Go to link:>

http://www.chinadaily.com.cn/cndy/2011-11/29/content_14178243.htm

Community mapping of African rainforests could show way forward for preservation, REDD

[Jeremy Hance](#)

[mongabay.com](#)

December 01, 2011



MAPPING FOR RIGHTS
Putting communities on the map

Home » Democratic Republic of Congo » Inongo Territory

Home
About Rainforest Foundation UK
Participatory mapping
Where we work:
Cameroon
Democratic Republic of Congo
Inongo Territory
Republic of Congo
Central African Republic
Gabon
Resources
Login to database

Inongo Territory click on the icons for more information

Participating Communities (not currently interactive)
Mapping Activities
Livelihoods and Cultural Activities
External Actors
Turlita-Ledima Nature Reserve
Logging Concessions

Photo Gallery

About Inongo Territory **Project** Resources

Inongo territory is in the Province of Bandundu in the centre-west of the Democratic Republic of Congo (DRC). It is home to a large number of Bantu groups and indigenous peoples, many of which depend on the forest and its resources for their survival.

Screenshot of new website of community mapping in central Africa's forests.

A new initiative to place community mapping of central African rainforests online could prove key to local rights in the region, says the UK-based NGO Rainforest Foundation. Working with forest communities in five African countries, Rainforest Foundation has helped create digital maps of local forests, including use areas, parks, and threats such as logging and mining. The website, MappingForRights.org, includes interactive maps, photos, and video.

Go to link:>

http://news.mongabay.com/2011/1201-hance_communitymapping_africa.html#ixzz1foiyd4rS

Technology Trends

A new tool to track and predict fire behaviour

Natasha Harradine

Updated December 01, 2011 13:57:39

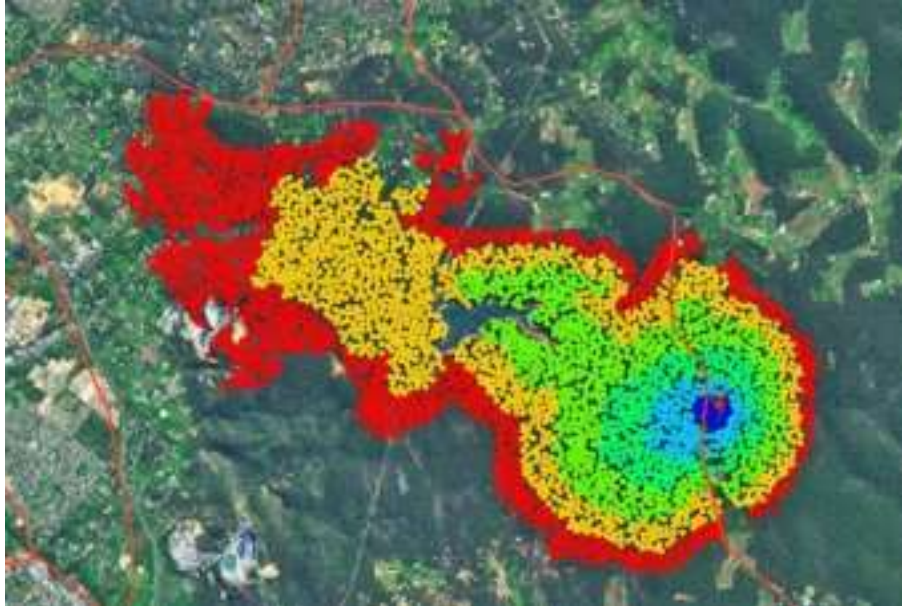


Photo: The simulation shows the ignition point, marked with a pin, and where the fire would spread. (Landgate)

A prescribed burn which got out of control in the Margaret River area destroyed at least 40 properties and damaged at least ten others.

In the wake of the blaze, questions have been asked about why the Department for Environment and Conservation continued with the burn despite expected adverse weather conditions.

A team is now at work trialling new technology which could give fire authorities a better assessment of risk management and possible outcomes before a decision is taken.

It can also be used during a bushfire emergency to predict fire movement, doing in 30 seconds what now takes an hour manually.

Go to link:>

<http://www.abc.net.au/news/2011-11-30/fire-technology-feature/3705182?section=wa>

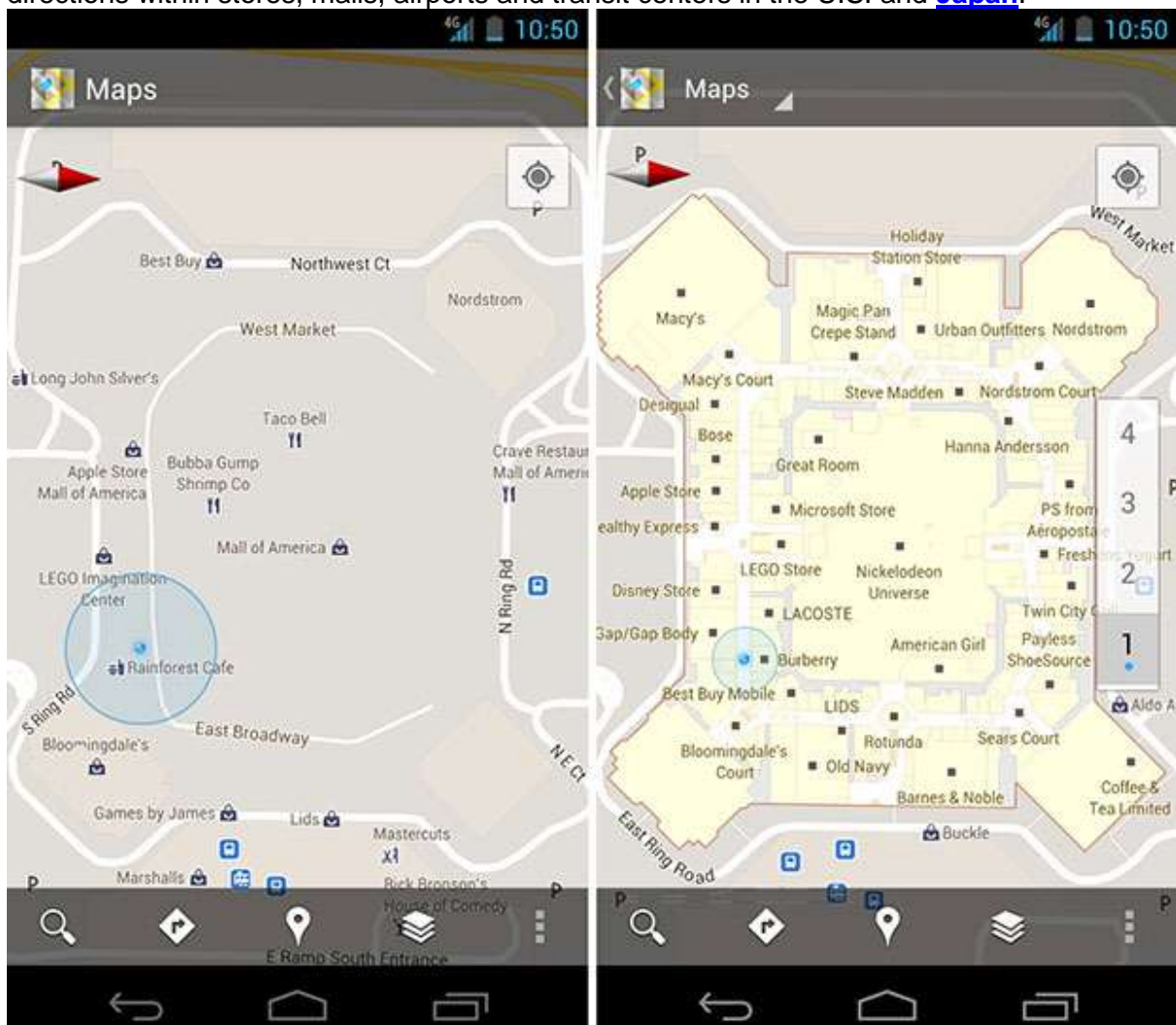
Google's maps go indoors in the U.S. and Japan

By Associated Press

2011-12-02 11:30 AM

Google">Google's next frontier in digital mapping will span the world's shopping malls and airports.

An upgrade of [Google](#)">[Google](#)'s mobile mapping service released Tuesday includes directions within stores, malls, airports and transit centers in the U.S. and [Japan](#).



Go to link:>

http://www.taiwannews.com.tw/etn/news_content.php?id=1775982

Google's Marissa Mayer: Her favorite mobile apps

By [Patricia Sellers](#) December 5, 2011: 11:21 AM ET

Mobile/local/social is the web's sweet spot right now. And Google's Marissa Mayer is in the middle of it.



Credit: Asa Mathat

We told you how Mayer engineered the [acquisition of Zagat](#). That could turn out to be a very smart deal if Google gets us searching and sharing and mapping our ways to restaurants even more than we do today.

At the *Fortune* [Most Powerful Women](#) dinner in Silicon Valley last week, Mayer explained her strategy at Google ([GOOG](#)), where she heads local efforts including maps. She also told us about three of her favorite mobile apps:

Google Maps 6.0: This app takes Google Maps indoors. In a Best Buy ([BBY](#)), for instance, you can make your way from tablets to TVs by viewing the floor plan and following that little blue dot that indicates your location. The app, launched last week for Android phones exclusively, also works in Home Depot ([HD](#)), IKEA, select Macy's ([M](#)) and Bloomingdale's, and some airports such as O'Hare, Hartsfield, and SFO. Could Disney ([DIS](#)) theme parks be next? Mayer wouldn't tell us.

Layar: This browser provides "augmented reality" experiences. Combining a camera and GPS and accelerometer, it will display photographically where you are and also what's down the road. Just as a cursor marks your position on a document, Layar transforms your phone into "a cursor for the world," Mayer says.

LikeALittle: This app aggregates online profiles and maps them to help you find nearby people who have common interests. The LikeALittle states the purpose more specifically: "We like to think of the site as a flirting-facilitator platform (FFP for short), a way for you to anonymously compliment and chat about potential crushes around you." Well, Mayer wouldn't call this a flirtation, but she learned via LikeALittle that LinkedIn ([LNKD](#)) cofounder Reid Hoffman, whom she has known for years, majored in symbolic systems at Stanford, as she did. Here's more app talk from Mayer:

Go to link:>

http://postcards.blogs.fortune.cnn.com/2011/12/05/google-marissa-mayer/?section=magazines_fortune

Tour ski slopes with just a click

BY VINCE HORIUCHI

The Salt Lake Tribune

Updated Dec 5, 2011 02:50PM

It may not be the same as strapping on a pair of skis and swishing through fresh powder down Big Emma or Regulator Johnson, but those who can't head up to Snowbird, Solitude or other Utah ski resorts can now go online and get an eye-level view of the state's best ski runs.

Google, which makes the Street View feature of Google Maps, has now made several of Utah's ski resorts available for view on its virtual mapping service.



Go to link:>

<http://www.sltrib.com/sltrib/lifestyle/53014446-80/google-ski-street-view.html.csp>

Nagpur has a whopping 447 slums!

TNN Dec 4, 2011, 03.43AM IST

Tags:

- [Ramesh Nagre](#)
- [National Fire Service College](#)

NAGPUR: Slums are alarmingly increasing in the city affecting the growth health [atmosphere](#) in the state's second capital. It can be gauged with the fact that there are around 447 slums in the Orange City.

Of which 287 are notified and 137 are non-notified slums, revealed 'slum mapping' carried out by the Nagpur Municipal Corporation (NMC). The survey has also identified 23 new slums in different parts of the city.

Go to link:>

http://articles.timesofindia.indiatimes.com/2011-12-04/nagpur/30474413_1_new-slums-illegal-slums-slum-mapping

Hotter, drier, meaner: Trends point to a planet increasingly hostile to agriculture

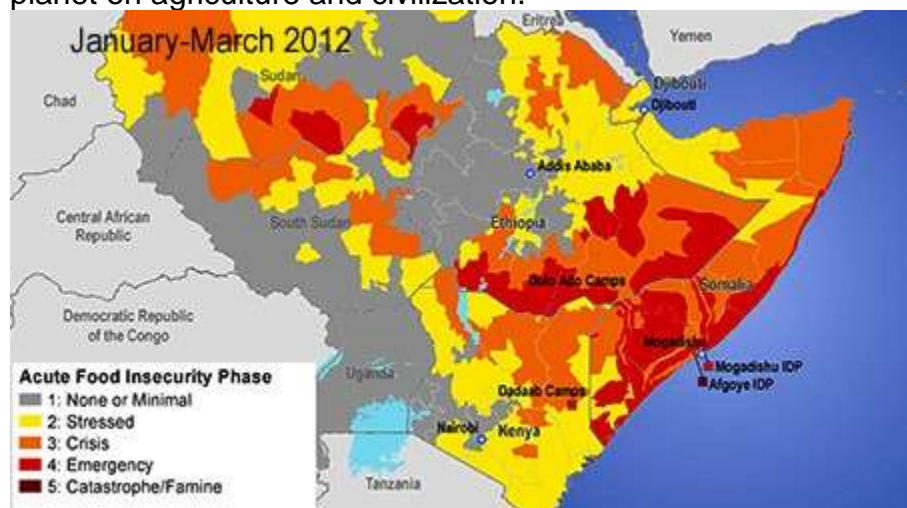
By Douglas Fischer

Daily Climate editor

Dec. 5, 2011

SAN FRANCISCO – To get a glimpse of the future, look to East Africa today. The Horn of Africa is in the midst of its worst drought in 60 years: Crop failures have left up to 10 million at risk of famine; social order has broken down in Somalia, with thousands of refugees streaming into Kenya; British Aid alone is feeding 2.4 million people across the region.

That's a taste of what's to come, say scientists mapping the impact of a warming planet on agriculture and civilization.



Go to link:>

<http://www.dailyclimate.org/tdc-newsroom/2011/12/climate-drought>

Mapping Controversies

Soviet Subs Cruised Canada's Arctic, Cold-War Era Maps Suggest

First Posted: 12/ 6/11 04:30 AM ET Updated: 12/ 6/11 06:50 AM ET

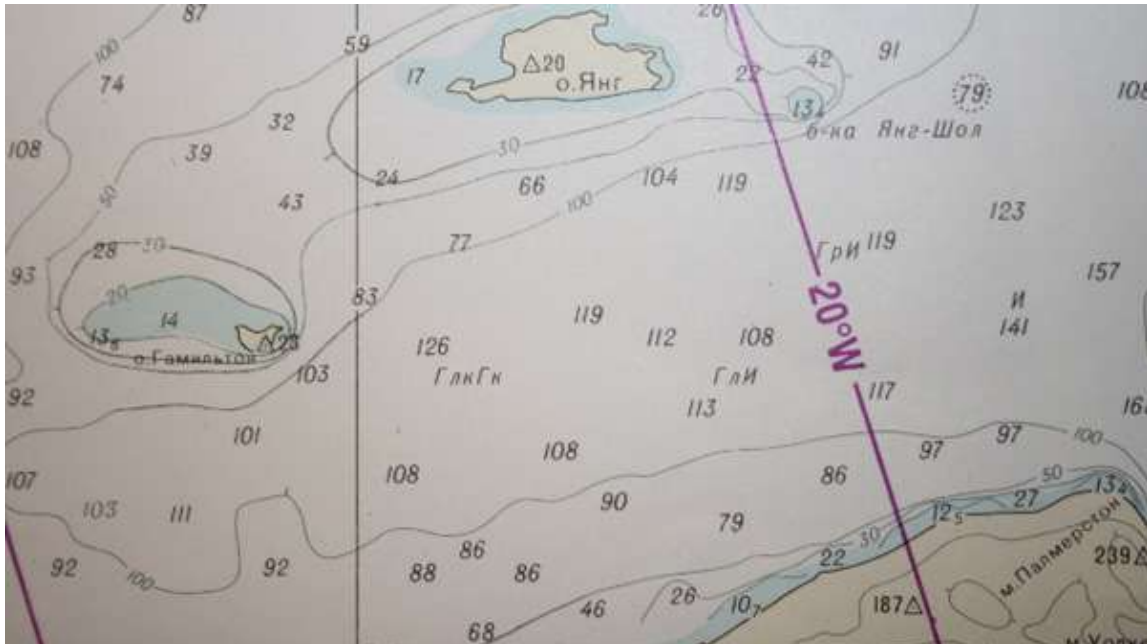
THE CANADIAN PRESS 

The old Soviet Union may have been just as familiar with Canada's Arctic waters as Canadians.

Sections of Cold-War-era nautical charts obtained by The Canadian Press suggest that Russian mariners have for decades possessed detailed and accurate knowledge of crucial internal waterways such as the Northwest Passage.

Those charts, which may offer the first documentary proof of the widely held belief that Soviet nuclear submarines routinely patrolled the Canadian Arctic during the Cold War, are still in use by Russian vessels. In some places, they are preferred to current Canadian charts.

"In some cases the Russian charts are more detailed than the Canadian ones and the navigators have them out on the chart table beside the Canadian ones in order to cross-reference any questionable soundings," said Aaron Lawton of One Ocean Expeditions, an adventure tourism company that charters the Russian-owned ship Akademik Ioffe for Arctic cruises.



This map is of a section of the Northwest Passage in Barrow Strait, southwest of Resolute. The map was obtained by Michael Byers from the bridge of the Russian-flagged Academic Ioffe cruise ship.

Go to link:>

http://www.huffingtonpost.ca/2011/12/06/soviet-sub-canada-arctic-cold-war-northwest-passage_n_1130970.html?ref=canada-politics

Lawyers caught mapping and then getting plain silly

By Dominique Paul Noth
Editor, Milwaukee Labor Press
Posted December 2, 2011

On Wall Street it's called insider trading. In retail circles, it's "bait and switch." There may not be a similar term in legal circles, but it's time to coin one, given the behavior of Michael Best & Friedrich.

The law firm shared \$400,000 in taxpayer money when hired to create a redistricting plan for the state legislature and the congressional districts. It heeded its GOP masters, designing new districts that so strongly favor continuing Republican control that many Democrats don't expect to win -- if the new maps survive both federal and state court challenges of considerable weight.

Go to link:>

http://www.milwaukeeelabor.org/in_the_news/article.cfm?n_id=00214

Mountaineer mapping error nearly fixed

URIEL J. GARCIA Cronkite News_| Posted: Monday, December 5, 2011

WASHINGTON - Coconino County Supervisor Matt Ryan urged a House committee Friday to grant "much-needed relief" to county residents who recently learned that their homes were built on federal land because of a 50-year-old surveying error. A 2007 U.S. Bureau of Land Management survey found that a 1960 private survey erroneously marked some federal land near Coconino National Forest as private property.

Those 2.67 acres of land would become part of the Mountaineer Subdivision, where 27 people bought what they thought was private property and where some now live. Some residents said they have had multiple property surveys over the years and it came as "a shock" when they learned that their homes had always been on federal land.

Go to link:>

http://azdailysun.com/news/local/state-and-regional/mountaineer-mapping-error-nearly-fixed/article_a4edff5c-bad9-5fb9-ab6b-ff5c29580d9b.html#ixzz1fodbtAYO

Indigenous Cartography

Mapping the terrain of Western Desert Aboriginal art

- by: *Christopher Allen*
- From: *The Australian*
- November 26, 2011 12:00AM



Clifford Possum Tjapaltjarri and Tim Leura Tjapaltjarri, *Warlugulong* (1976). Source: Supplied

The patterns they began to paint, then, were like topographic maps of the terrain to which they belonged. There is no horizon because they are not in any sense views of the land, nor is there any idea of the standing viewer looking out towards a vanishing point, sightline parallel to the ground, which underpins geometrical perspective. The Aboriginal viewpoint is like an aerial one, except that too is misleading, since it is in reality the tracing of paths walked on foot from one place to another.

A better analogy is probably the map of an underground railway system, which is a schematic picture of links and connections, rather than an accurate and proportional representation of the distance or even the strict direction between points.

Go to link:>

<http://www.theaustralian.com.au/news/arts/mapping-the-terrain-of-western-desert-aboriginal-art/story-fn9n8gph-1226203652406>

Antarctica Mapping

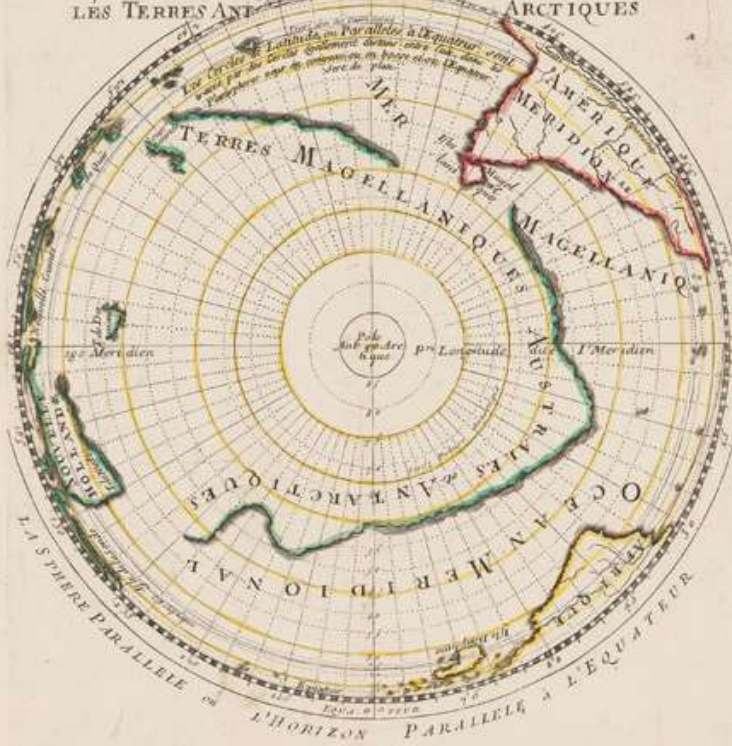
Antarctica: mapping the last continent

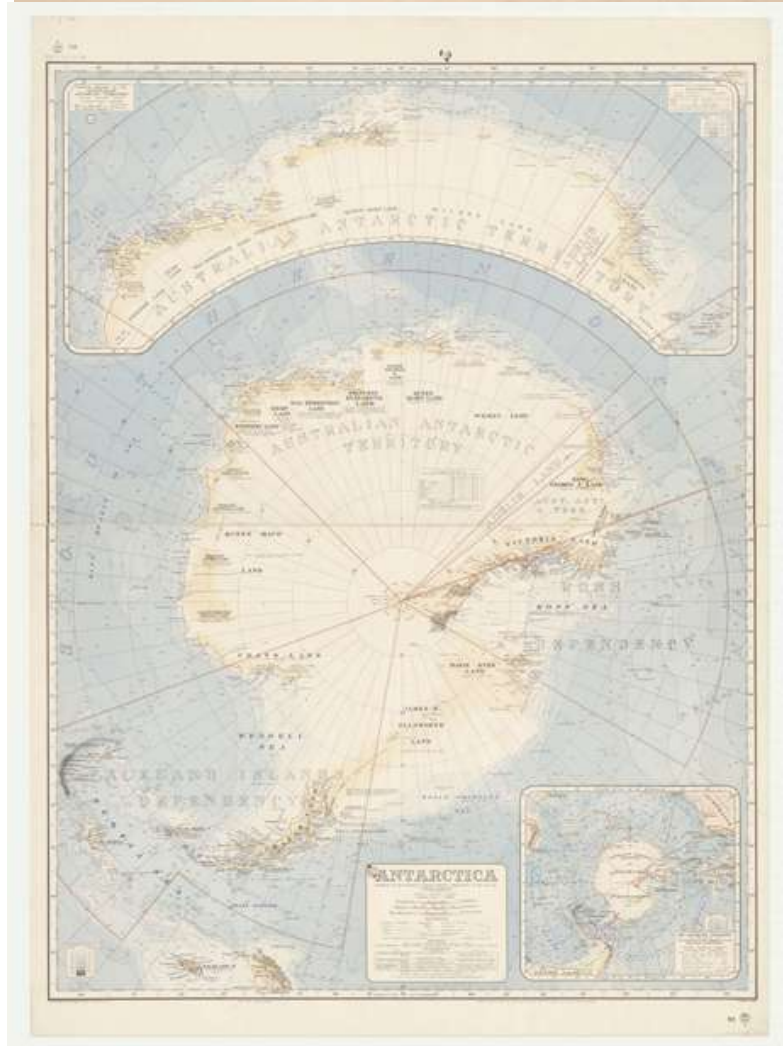
A new exhibition of historic charts at the State Library of NSW, Australia, revisits how explorers put Antarctica on the map.



Captain Cook sketched this in 1772, marking the path he would take on his second voyage south. (Credit: State Library of NSW)

fol. **HEMISPHERE MERIDIONAL du GLOBE TERRESTRE** vuientant
 l'œil étant posé au Zénith et à distance infinie du plan de projection
 contenant partie de **L'AFRIQUE** par le Sud **L'AMERIQUE MERIDIONALE** et
LES TERRES ANTI-ARCTIQUES





Go to link:>

<http://www.australiangeographic.com.au/journal/antarctica-mapping-the-last-continent.htm>

Career Profile



Rebecca Zylberberg
Program studied: Bachelor of Applied Science, Multimedia Cartography
Graduation Year: 2008
First Job:
GIS Analyst/ Cartographer, Spatial Vision
Current Position:
Cartographer, Rio Tinto, Perth

"I started my current job as soon as I graduated - literally the next day. I'm primarily involved in the Vicmap book series, for which we are producing 5 books of maps for different regions across the State of Victoria.

I love this career because it suits me to a T. I went through high school doing straight science subjects but it was pushed onto me. Cartography is a blend of my science side and my arts side. It's a marriage! If you are into geography, I'd definitely recommend it because you are using science but you create the product with the arts side

I definitely recommend studying Geospatial Science at RMIT. It's smaller and you get more personalised teaching. The lecturers are really enthusiastic about their specialised areas and their enthusiasm is contagious."

Conferences

India Geospatial Forum 2012

8 – 9 February, 2012

Three vertical conferences focusing on infrastructure (Geo-Infra), enterprise (Geo-Enterprise) and e-governance (Geo-Gov)

www.indiageospatialforum.org

The International Congress Geotunis 2012

26th to 30th March 2012

Tunisia,

Sixth Session

“The use and the applications of GIS, remote sensing and digital modeling in the field of environment and in the management of natural resources and hazards”

Interexpo

17-19 April 2012

Geo-Siberia-2012”, the 8th international congress and specialized exhibition in the field of geodesy, cartography, geology, geophysics, land management, land and property cadastres, geoinformation, Earth remote sensing, forestry management, environmental monitoring, specialized instrument-making, which will be held on 17-19 April 2012 in Novosibirsk, Russian Federation. “Interexpo Geo-Siberia-2012” is the former “Geo-Siberia” in new format. From September 2011 the exhibition and scientific congress “Geo-Siberia” have been renamed as “Interexpo Geo-Siberia” that more exactly reveals the content and spirit of this forum.

<http://geosiberia.ssga.ru>

Mercator Revisited – Cartography in the Age of Discovery

25-28 April, 2012

International conference

Sini-Niklaas, Belgium

Contact: contact@mercatorconference2012.be

www.mercatorconference2012.be

4th International Conference on Cartography and GIS

18-22 June, 2012

Albena - summer resort on Black Sea, Bulgaria.

Brisbane International Geospatial Forum 2012

8 - 10 July, 2012

'Global Connections through Mapping'

Brisbane, Australia

Hosted by Mapping Sciences Institute, Australia, the Australian and New Zealand Map Society and the International Map Trade Association. A combined Conference and Trade Show.

Show. Further information:

(website) www.imtamaps.org ; (email) imtaaspac@chariot.net.au

The influence of SOA on Map Production and GeoBusiness "

November, 19th to 23th 2012

This workshop will be held in Vienna, Austria.

Further information will be available soon.

http://www.cartography.at/icamapprodution/?Upcoming_Events

NOTE: If you are involved in a workshop, symposium or conference related to cartography please send me brief details for the newsletter.

Esoteric Cartography

Welcome To Revolver Maps 2.0

Revolver Maps are interactive visitor globes rendered by the Revolver Engine.

Check the widget on the left: Use the buttons or drag to navigate.

The **Revolver Graphics Engine** is a strongly specialized 3D renderer. It's available as a **Java** version as well as a **Flash** version. The RevolverMaps Service bases on both implementations.

Now have a closer look: Every visitor leaves an eternal dot on the globe, recent visitors are tagged by the labels showing flag, city and state.



use the buttons to control rotation and zoom



Thanks to David Forrest for this item

Go to link:>

http://www.cartography.at/icamapprodution/?Upcoming_Events

Mapping out an art career

Maryland Hall exhibit features detailed map collages

By [THERESA WINSLOW](#), Staff Writer

Published 12/03/11

Maps point Anna Fine Foer in the right direction - whether it's for travel or for art.



Joshua McKerrow — The Capital Eastport artist Anna Fine Foer discusses her exhibit, "Camougraphy in Cartopolis," which runs through Dec. 15 at Maryland Hall for the Creative Arts in Annapolis. The show features 30 works, most incorporating map collages.

The Eastport resident employs pieces from all kinds of maps to make intricate collages. They function as art and social commentary on topics ranging from science and the role of technology to politics and entertainment. There's also a religious component to some of her work.

"I can tell a lot of different stories at the same time (through maps)," Foer said. "It can be about geographical location and conceptual ideas."

Go to link:>

<http://www.hometownannapolis.com/news/top/2011/12/03-25/Mapping-out-an-art-career.html>

Mapping world dance

December 5th, 2011 by brand-m



Thomson has developed an interactive map showing the evolution of western dance music over the last 100 years. The journey begins with traditional folk music from Europe, Africa and the Caribbean, writes Steve Mullins. The sixties soul and funk explosions trigger the rise of disco in the States, and synth pop in Europe. In the late 70s and early 80s, hip-hop, house, techno and electro explode, and that spawns a multitude of other genres.

The map is formatted like an audio player, and press-play and visual connections between genres race around a map of the world, revealing how music evolved from early 19th-century African songs and marching-band music to 21st century dubstep, grime, and electro house.

Go to link:>

http://www.brand-m.biz/mapping-world-dance_11811.html

Wanted: Blankets and Napkins Printed With Personalized Maps

Soft Cities uses OpenStreetMap data to produce beautiful color textiles of your neighborhood.

"Maps get us around, but they also hold our memories," says artist and entrepreneur Nikki Gunn Rodenbeck. "Personalized maps become something of a visual story of your life, either in the present, past, or future." To explore the sentimentalities of our personal geographies, Rodenbeck recently launched [Soft Cities](#), where you can order cuddly textile maps of just about anywhere on earth, with personalized markers denoting any special location that's close to your heart.



Go to link:>

<http://www.fastcodesign.com/1665548/wanted-blankets-and-napkins-printed-with-personalized-maps>

Eye Candy: Pretty Maps Boston

Text Size: [A](#) | [A](#) | [A](#)

BY [Kaitlyn Johnston](#) POSTED ON 12/5/2011

A couple of summers ago when Stamen Design's [Pretty Maps](#) first made its way around the web, everyone *oohed* and *ahhed* because of its Google Earth-like addictability and visual appeal. Behind the scenes, it's pretty cool, too: The interactive mapping tool assigns colors and essentially overlaps numerous layers of community-generated data, including Flickr shapefiles, Natural Earth urban areas, and OpenStreetMap (OSM) road, highway and path data.

The resulting image looks like you're flying above the city while looking through a kaleidoscope, or like this:



Go to link:>

<http://blogs.bostonmagazine.com/bostonista/2011/12/05/eye-candy-pretty-maps-boston/>