



Commission on Education and Training

<http://lazarus.elte.hu/cet/>

November 2011 Newsletter

An occasional electronic newsletter from the Commission.

If you have any brief items of interest then please email them to david.fraser@rmit.edu.au for eCET.

If you have more substantial articles please send them to Igor Drecki at i.drecki@auckland.ac.nz for the ICA newsletter.

Quote

"In a world where electronic mapping is so accessible, the public enthusiasm for a printed, tangible product is as strong as ever."

Director of Marketing Rob Burns, Maps.com

ICA Meeting – Vienna – November 2011



[Thanks Horst for the photographs]

Dr Suchith Anand sent his thoughts relating to the ICA gathering. I have included the email in its original form below as it contains some interesting thoughts of education and training:

Dear ICA Colleagues,

First of all big thank you to Georg and his colleagues for the excellent organisation of this very successful meeting. Personally i found this meeting very useful for me to get an idea of the bigger strategic vision of ICA. I am also very pleased to see the focus on capacity building and outreach for the ICA. For our commission on OSGT ,I strongly believe that in addition to our scientific and research activities , our aim is also to work on ways to provide the benifits of geospatial technology to the wider community.

Especially for the economically disadvantaged communities across the world , we also need to provide the software tools (in addition to training workshops and other capacity building activities) for helping them in thier spatial decision making processes (there are many examples from agriculture, land use etc to community activities like <http://ushahidi.com/> <http://mapkibera.org/> etc) , and i see free and open source GIS and open data as key for achieving this objective. Hence the MoU between the ICA and the Open Source Geospatial Foundation is the right step in this direction and will help us build synergies for the benifit of the wider community.

Also i want to highlight the fact that Open Source software is not only about the lower cost and sustainability but also for the high quality (because of the transparency and peer review). Good example is NASA's motivation for distributing software codes Open Source for increasing thier software quality via community peer review <http://ti.arc.nasa.gov/opensource>

I would like to offer the E-learning for Open Geospatial Community (ELOGeo) Platform <http://elogeo.nottingham.ac.uk/> for the ICA in our efforts for providing high quality training materails for anyone to use under creative commons licence.

The ELOGeo repository <http://elogeo.nottingham.ac.uk/xmlui> though launched only 5 months back has seen strong growth. As of now there are around 66 sets of material (lecture notes, practicals, handouts, papers etc) submitted to the repository by the community. In this 5 month period there were over 17000 accesses of the materials from over 4000 users which demonstrate the strong demand from the community.

I have also one suggestion for the ICA Body of Knowledge plans. As this is a very diverse area (from generalization to projections to webservices etc) and also for keeping the contents updated, it might be good to explore options like having a wiki site also setup in parellel to harness the community input for the process. Different subsections can have different theme leaders and they can edit and moderate thier sections. The advantage is it will very fast development and we can take snapshots at regular intervals from the wiki to feedin to the more formalized structure. I will be pleased to setup an ICA wiki for this in the ELOGeo platform.

If ICA wish to develop interactive learning materials for the ICA Body of Knowledge type initiative, i will suggest looking at Xerte for this . Xerte is open-source software developed the University of Nottingham, released under the GNU public license, so anyone can use it. Xerte provides a full suite of open source tools for elearning developers and content authors producing interactive learning materials. Details at <http://www.nottingham.ac.uk/xerte/index.htm>

It was a pleasure meeting colleagues from the different commissions and discussing ideas over the last two days. Hoping to see you all in future ICA events and best wishes for the future.

Suchith

*Dr Suchith Anand
Suchith.Anand@nottingham.ac.uk
University of Nottingham NG7 2 TU*

Cartography in the media

Israelis Mapping Every Grave in 3,000-Year-Old Mount of Olives Necropolis

Published November 17, 2011
| Associated Press

JERUSALEM – A Jewish group in Jerusalem is using 21st-century technology to map every tombstone in the ancient cemetery on the Mount of Olives, a sprawling, politically sensitive necropolis of 150,000 graves stretching back three millennia.



The goal is to photograph every grave, map it digitally, record every name, and make the information available online.

GO TO LINK=>

<http://www.foxnews.com/scitech/2011/11/17/israelis-mapping-every-grave-in-3000-year-old-mount-olives-necropolis/#ixzz1e29kZHRg>

Fragments of Gondwana discovered off Perth

Updated November 16, 2011 10:57:22

Two islands which were once part of the super-continent Gondwana have been discovered on the floor of the Indian Ocean about 1,600 kilometres west of Perth.

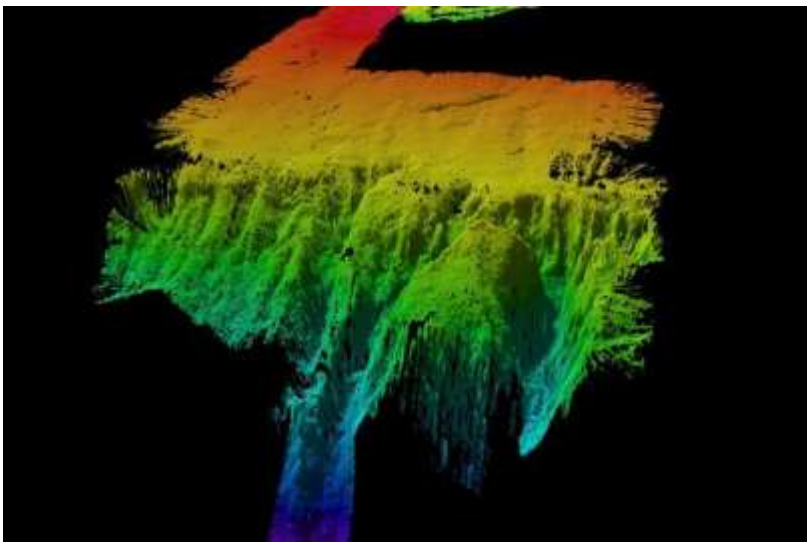


Photo: A CSIRO image of one of the island plateaus found at the bottom of the Indian Ocean (University of Tasmania)

GO TO LINK=>

<http://www.abc.net.au/news/2011-11-16/fragments-of-gondwana-discovered-off-perth/3673810>

Ethiopia on Way to National Energy Map

Study identifies wind, solar potentials whose lack of information has been leaving the resources untapped



The database enables the production of a variety of energy maps based on data collected on the supply side of electricity, biomass, renewable energy and hydrocarbons.

Since the potential areas for power generation are clearly indicated on the energy map,

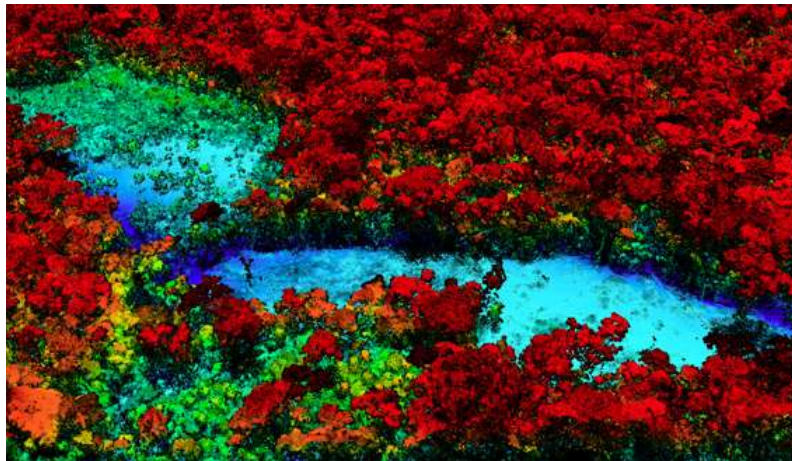
GO TO LINK=>

<http://addisfortune.com/Ethiopia%20on%20Way%20to%20National%20Energy%20Map.htm>

Breakthrough technology enables 3D mapping of rainforests, tree by tree

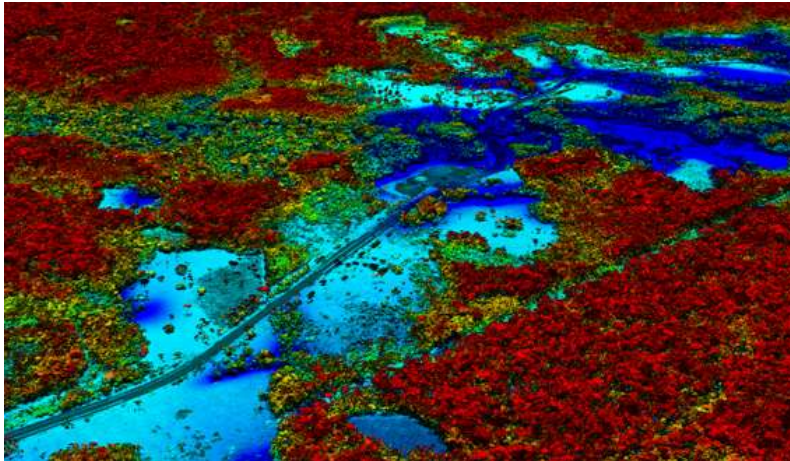
[Rhett A. Butler](#), mongabay.com

October 24, 2011



This image shows a small deforested patch with individual trees, colored by height. The densest biomass is red, while deforested areas — with low biomass — are shades of blue. Image courtesy of the Carnegie Airborne Observatory.

High above the Amazon rainforest in Peru, a team of scientists and technicians is conducting an ambitious experiment: a biological survey of a never-before-explored tract of remote and inaccessible cloud forest. They are doing so using an advanced system that enables them to map the three-dimensional physical structure of the forest as well as its chemical and optical properties.



3D forest mapping along the Interoceanic Highway, a road that was just upgraded to facilitate transport of commodities from the Amazon to Pacific coast ports. Asner's research has shown that improvement of the "Transoceanica", as it is sometimes known, has triggered a sharp increase in deforestation in surrounding areas. Images courtesy of the Carnegie Airborne Observatory.

GO TO LINK=>

http://news.mongabay.com/2011/1024-asner_rainforest_monitoring.html

Rivers of ice: Vanishing glaciers

Stunning images from high in the Himalayas - showing the extent by which many glaciers have shrunk in the past 80 years or so



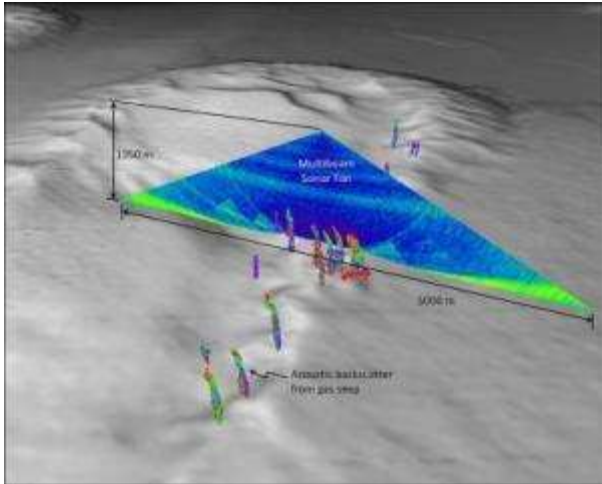
GO TO LINK=>

<http://www.bbc.co.uk/news/world-south-asia-15216875>

Multibeam Sonar Can Map Undersea Gas Seeps

ScienceDaily (Oct. 6, 2011)

A technology commonly used to map the bottom of the deep ocean can also detect gas seeps in the water column with remarkably high fidelity, according to scientists from the University of New Hampshire and the National Oceanic and Atmospheric Administration (NOAA). This finding, made onboard the NOAA ship Okeanos Explorer in the Gulf of Mexico, will lead to more effective mapping of these gas seeps and, ultimately, enhanced understanding of our ocean environments.



This is a view of the multibeam sonar water column backscatter data used to detect gas seeps. Gas seeps derived from the sonar are shown in the foreground. (Credit: Image produced by the University of New Hampshire Center for Coastal and Ocean Mapping/Joint Hydrographic Center using IVS Fledermaus software)

GO TO LINK=>

<http://www.sciencedaily.com/releases/2011/10/111006113620.htm>

A stellar shelf life

Perry Vlahos

October 13, 2011



ASV librarian Barry Cleland. Photo: Rodger Cummins

A rare astronomical atlas has proved its incredibly high worth to eager star-gazers.

In September 2003, Kym Thalassoudis was our guest speaker from Adelaide and his lecture topic featured his area of interest: "astronomical atlases".

Thalassoudis already had up and running a popular website, skymaps.com, where anyone could download an accurate and easy-to-use chart he had created of the starry sky, for any month of the year. In fact, I still recommend it to anyone asking for a free chart at just the right level for someone starting out in astronomy.

Thalassoudis's presentation told of the beginnings of celestial cartography and how the earliest charts came to be. He also made mention of a rare "ghost book" atlas by Dr John Bevis from the mid-1700s that was never published officially.



The exceedingly rare astronomical atlas by Dr John Bevis. *Photo: Rodger Cummins*
Thalassoudis said there were only 21 copies worldwide, making it rare and valuable.

GO TO LINK=>

<http://www.theage.com.au/technology/sci-tech/a-stellar-shelf-life-20111012-1ljmx.html#ixzz1cEx27moq>

Education

Geography

Map skills

To read a map you need to understand compass directions, grid references and the map's key and scale. You need to be able to find features when given a map reference. You also need to be able to describe a feature's location on a map by giving a map reference.

Basics of mapping: 1

Maps are representations of the world created by people called **cartographers** to help other people navigate the world. Maps contain information tailored to a specific purpose.

Go To Link=>

http://www.bbc.co.uk/schools/gcsebitesize/geography/geographical_skills/maps_rev1.shtml

Google Map Maker



Map your world with Google Map Maker

Google Map Maker lets you add to and update the map, for millions of users to see in Google Maps and Google Earth. Get started mapping the places you know.

[Start Mapping Now](#)

-  **Your town**
Add detail to your town. Put your local bookstore on the map, trace the outline of your library, or place your favorite restaurant in the right spot.
-  **Schools and universities**
Build a detailed campus map by adding academic buildings and walkways.
-  **Roads**
Trace and add roads to Google Map Maker to help people find their way around.

-  [Map Maker Help Center »](#)
-  [See where Map Maker is available »](#)
-  [Visit the Map Maker community forum »](#)

Watch timelapse videos of user contributions.



Callao, Peru



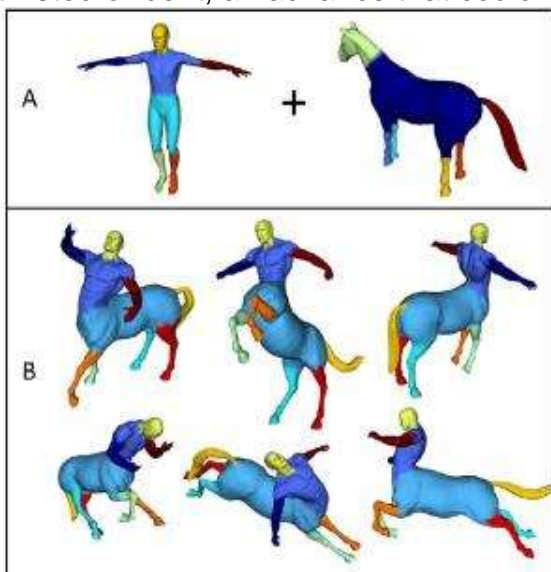
Go To Link=>

http://www.google.com/intl/en_ca/help/mapmaker/

Genius of Einstein, Fourier Key to New Computer Vision That Mimics How Humans Perceive 3-D Shapes

ScienceDaily (June 20, 2011)

Two new techniques for computer-vision technology mimic how humans perceive three-dimensional shapes by instantly recognizing objects no matter how they are twisted or bent, an advance that could help machines see more like people.



The techniques, called heat mapping and heat distribution, apply mathematical methods to enable machines to perceive three-dimensional objects, said Karthik

Ramani, Purdue University's Donald W. Feddersen Professor of Mechanical Engineering.

"Humans can easily perceive 3-D shapes, but it's not so easy for a computer," he said.

Go To Link=>

<http://www.sciencedaily.com/releases/2011/06/110620161310.htm>

Point Cloud and Open Source Debate Opens The European LiDAR Mapping Forum 2011

Monday, October 24th 2011

A major step forwards or will it damage the industry; should we be supporting Open Source as a way forward for LIDAR technologies? It could open doors to many – or will it result in the closure of a number of industry players and be too high a price to pay? Or consider Point Cloud Services; are these a way to dramatically improve services for customers or is this just evolving technology?

After much feedback from the LIDAR community, the organisers of the European LiDAR Mapping Forum (ELMF) have selected these two burning issues to be debated in a newly introduced plenary panel debate session, taking place on the opening day of the European LiDAR Mapping Forum, which runs from 29-30th November 2011 in Salzburg, Austria. Experts from all sectors of the LIDAR industry will put forward their opinions for debate with delegates.

Go To Link=>

<http://www.directionsmag.com/pressreleases/point-cloud-and-open-source-debate-opens-the-european-lidar-mapping-forum-2/210467>

Nokia Maps 3D - the 'making of' DVD extra

Published by *Steve Litchfield* at 11:08 UTC, October 25th 2011

Nokia Maps 3D is a desktop browser-based 3D mapping tech demo, with (currently) 23 major cities around the world mapped in glorious, true 3D, with data and textures gathered from satellites, planes and cars, using conventional cameras and laser rangefinders. Anyway, Nokia just released a rather cute 'making of' video, demonstrating in public-friendly form, roughly how it all gets put together. It's embedded below - comments welcome. Oh, and apparently you'll soon not even have to install a plug-in into your browser...

Of course, the resources to do all this for much more of the world's urban areas would be enormous, but we'll settle for this as both a good start and a good demo of Nokia's 3D mapping technology.



Go To Link=>

http://www.allaboutsymbian.com/news/item/13461_Nokia_Maps_3D-the_making_of_DV.php

ArcGIS Online On Show

Published on Fri, 21/10/2011, 10:09:18



ArcGIS Online, the cloud-based system for creating and sharing maps and geographic information online, was applauded at Ozri 2011 as having the power to bring GIS to the masses.

Speaking at the conference last week, Esri Australia Managing Director Brett Bundock said ArcGIS Online would do for GIS what Google has done for online mapping – it will make it accessible to the masses.

“At Esri Australia, we feel a real sense that GIS is on the threshold of an exciting new frontier,” said Mr Bundock.

“With ArcGIS Online, our compatriots at Esri in the U.S. have opened up the science of GIS to every household, every student, and every business owner.

“ArcGIS Online bridges the gap between the simple online maps which have been popularised thanks to Bing and Google, and Esri’s offering, which draws on a rich development history spanning more than 50 years.

Go To Link=>

<http://www.spatialsource.com.au/2011/10/21/article/ArcGIS-Online-On-Show/HKNEQTYHCU.html>

Map Creation Software

MapBox

Make beautiful maps. Share them anywhere. **That's MapBox.**

Go To Link=>

<http://mapbox.com/>

PostGIS

PostGIS adds support for geographic objects to the [PostgreSQL](#) object-relational database.

Go To Link=>

<http://postgis.refractions.net/>

Mapnik

Mapnik is a [Free](#) Toolkit for developing mapping applications. Above all Mapnik is about making beautiful maps.

Go To Link=>

<http://mapnik.org/>

Google Maps

Go To Link=>

Maps.google.com

TileMill

TileMill is an application for making beautiful maps. Whether you're a journalist, web designer, researcher, or seasoned cartographer, TileMill is the design studio you need to create compelling, interactive maps.

Go To Link=>

<http://mapbox.com/tilemill/>

Location, location, location

Putting the smart into smartphones

October 28, 2011



Phone-based barometers, thermometers and breathalysers. Oh, My!

Sensors maketh the smartphone. The addition of touch screens, gps and accelerometers have set the bar for what an entry level phone must have but it also opened our imaginations to what these wonder devices could eventually do.

.....
The Galaxy Nexus has added a barometer sensor which can measure atmospheric pressure (first appearing in the Motorola Xoom - I wonder if this was one of the bits of tech booty from the recent Google acquisition?). The additional data that the barometer can give will augment the data from the GPS to offer altitude measurements. Time will tell if new weather forecasting apps will be able to use this additional sensor in a meaningful way. I wonder if there are applications for divers and other wilderness adventure sports.

GO TO LINK=>

<http://www.theage.com.au/it-pro/innovation/blogs/smoke--mirrors/putting-the-smart-into-smartphones-20111027-1mlj7.html#ixzz1cEvpM8Da>

More than Navigation: Who Cares Where Starbucks Is?

October 26, 2011 By: [Janice Partyka](#)
Wireless Pulse, October 2011

The location industry is evolving. In the near future we won't be discussing navigation and mapping as a way of finding the nearest Starbucks. Contextual location driven advertising will start delivering solid revenues, as soon as the market becomes better organized. The value of location information will be magnified as it shifts to the cloud. Vehicle manufacturers will be creating their own rich contextual location information. Near field communication, NFC, with its seat between consumers and cash registers, will provide some of the most valuable location data. These are points all made at last week's LocNav conference by The Where Business.

Tipping Point. Half of Americans are not using smartphones. Location becomes more interesting when everyone has a smartphone and it reaches a tipping point. Social proximity and location has big benefits. "When everyone has a smartphone, you can connect via wireless mesh," says Michael Metcalf of Yahoo. "If I'm in a line

at JFK for a cab, I can let others know my destination and I can reduce the line and wait by half.” Geo-fencing has been stymied by the battery drain caused by frequent GPS pinging. Wireless mesh technology solves this issue. Another winner in location is near field communications, which works in short range proximity to enable purchases and other activities via smartphones. It creates a valuable database that includes precise location tracking data.

90% of marketing managers plan to use mapping technology in the next year

Posted 11 November 2011 14:47pm by [Vikki Chowney](#)

90% of 250 marketing managers in the transport, finance, public sector and retail industries said that they are using, or have plans to use, mapping and geospatial technology as part of their marketing strategy.

Within the survey, 'mapping technology' was defined as technology that can be used by companies to present geographical information regarding the business to customers and/or staff, and it looks to be affecting businesses at every level. 62% of those using it already said it had forced them to reconsider their product strategy. Nearly half of marketing professionals using the technology (46%) said that it improves productivity, and one in five (21%) are using it to combine different sets of data and spot patterns, agreeing that this would not have been possible without being able to visualise information.

GO TO LINK=>

<http://econsultancy.com/us/blog/8264-vanson-bourne-and-google-reveal-growth-in-mapping-technology>

In the right direction

Shweta Taneja
Tue, Nov 15 2011

A map in hand is worth two on line when you are driving, says Amit Prasad, founder and CEO, SatNav Technologies, a Hyderabad-based GPS map-making company.



“You don’t need a phone GPRS connection, and re-routing is much faster in on-board systems,” he says. After all, cars honking behind you in traffic will not wait for the map to buffer on your smartphone. “A good GPS system talks to you and says ‘turn right’ at exactly the point where you need to take a turn,” explains Prasad.

GO TO LINK=>

<http://www.livemint.com/2011/11/15214833/In-the-right-direction.html?h=B>

Google Launches Indoor 'Street View' Shots

By [Chloe Albanesius](#)
October 28, 2011

Google is taking its Street View mapping service indoors. No, it won't capture you vegging out on your couch, but the feature will be exploring the interiors of certain businesses.

"This experience, using Street View technology, includes 360-degree imagery of the business interior and storefront," Google said back in May. "With this immersive imagery, potential customers can easily imagine themselves at the business and decide if they want to visit in person."



Go To Link=>

<http://www.pcmag.com/article2/0,2817,2395479,00.asp#fbid=xOSrpl-HefL>

App for hikers and backpackers prints custom maps to order

Backpacker magazine and Trimble (NASDAQ: TRMB) have just released a new app for the iPad that is called Backpacker Map Maker. It is a mapping and trip-planning program that runs on the Apple iPad, and enables backpackers and hikers to find wild places, plot GPS points and plan their next adventure over seamless topo maps — and do this all from the touch-screen of an Apple iPad.



GO TO LINK=>

<http://www.oh-yay.com/app-for-hikers-and-backpackers-prints-custom-maps-to-order-8811666.html>

TomTom recalculates direction on navigation devices that made it a household name

Roberta Cowan
Amsterdam— Reuters

Last updated Tuesday, Oct. 25, 2011 7:59AM EDT

TomTom, the Dutch navigation equipment and digital map maker, is switching focus away from the cash-bleeding personal navigation devices that made it a household name to its auto and mapping services to restore growth and profits.



Best known for its personal navigation devices (PNDs) used by car and truck drivers, TomTom also sells real-time traffic services through its internet-connected devices and smartphone apps, mapping data to businesses, as well as navigation units which are built into cars, including various Renault, Fiat and Mazda models.

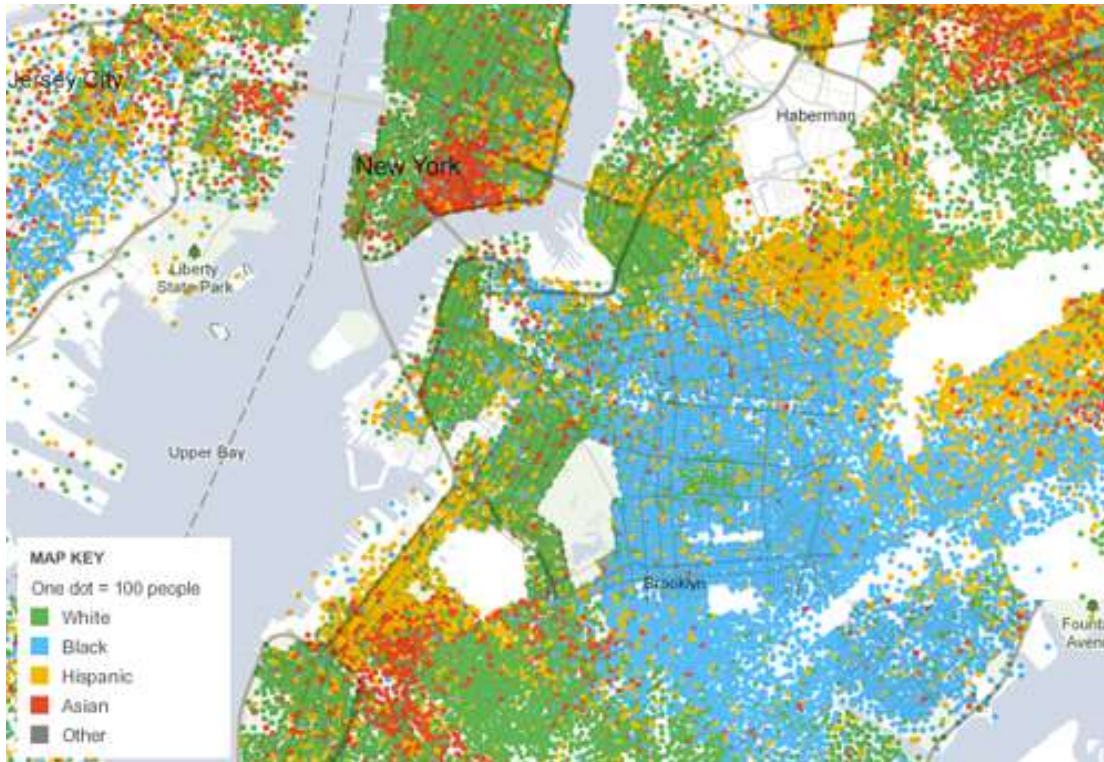
Go To Link=>

<http://www.theglobeandmail.com/news/technology/tech-news/tomtom-recalculates-direction-on-navigation-devices-that-made-it-a-household-name/article2211588/>

When Maps Don't Cut It

When Maps Shouldn't Be Maps

Matthew Ericson, the deputy graphics director at The New York Times, says: Often, when you get data that is organized by geography — say, for example, food stamp rates in every county, high school graduation rates in every state, election results in every House district, racial and ethnic distributions in each census tract — the impulse is since the data **CAN** be mapped, the best way to present the data **MUST** be a map. You plug the data into ArcView, join it up with a shapefile, export to Illustrator, clean up the styles and voilà! Instant graphic ready to be published. And in many cases, that's the right call.



<http://www.gpsworld.com/wireless/more-navigation-who-cares-where-starbucks-is-12218>

Matthew Ericson, deputy graphics director at The New York Times that The map is great when geography/location is the critical issue, but other graphics (tables, graphs) based on the same GIS data often are better, where analysis can clarify the message (Matthew Ericson, deputy graphics director at The New York Times) <http://www.ericson.net/content/2011/10/when-maps-shouldnt-be-maps/>

Mathew Ericson links to a site where census data is displayed for the district under the cursor, interactively.

GO TO LINK=>

<http://projects.nytimes.com/census/2010/explorer>

(Thanks to Les Isdale for this (edited) contribution)

FSI mapping could be misused, say experts

Kunal Purohit, Hindustan Times

Mumbai, November 11, 2011

In a move that will impact the growth the city sees in the future, the civic body plans to evaluate the existing floor space index (FSI) consumption in an area vis-à-vis with the infrastructure of the place through a process called the FSI mapping. The findings will be used to determine how liveable an area is.

Unless studied in combination with the density of population, simply mapping the existing FSI makes little sense, say experts. "Such mapping can be misleading as it would show that consumption in an area like Dharavi is low, but it doesn't reflect that the density of population there is very high," said Pankaj Joshi, executive director of the Urban Design Research Institute. "Such a survey, though necessary, is incomplete just by itself."

GO TO LINK=>

<http://www.hindustantimes.com/India-news/Mumbai/FSI-mapping-could-be-misused-say-experts/Article1-767581.aspx>

Happy birthday, Tech City: Have another confusing map

PM hobnobs with startup upstarts at party
By [Brid-Aine Parnell](#)

The UK Prime Minister went down to the Silicon Roundabout on Thursday to mark the first anniversary of his Tech City initiative and unveil an interactive map of it all.

Unfortunately, in practice this seems to mean that the map is a dense information overload, much of which appears quite pointless,.....

GO TO LINK=>

http://www.theregister.co.uk/2011/11/10/tech_city_first_birthday/

Statistics

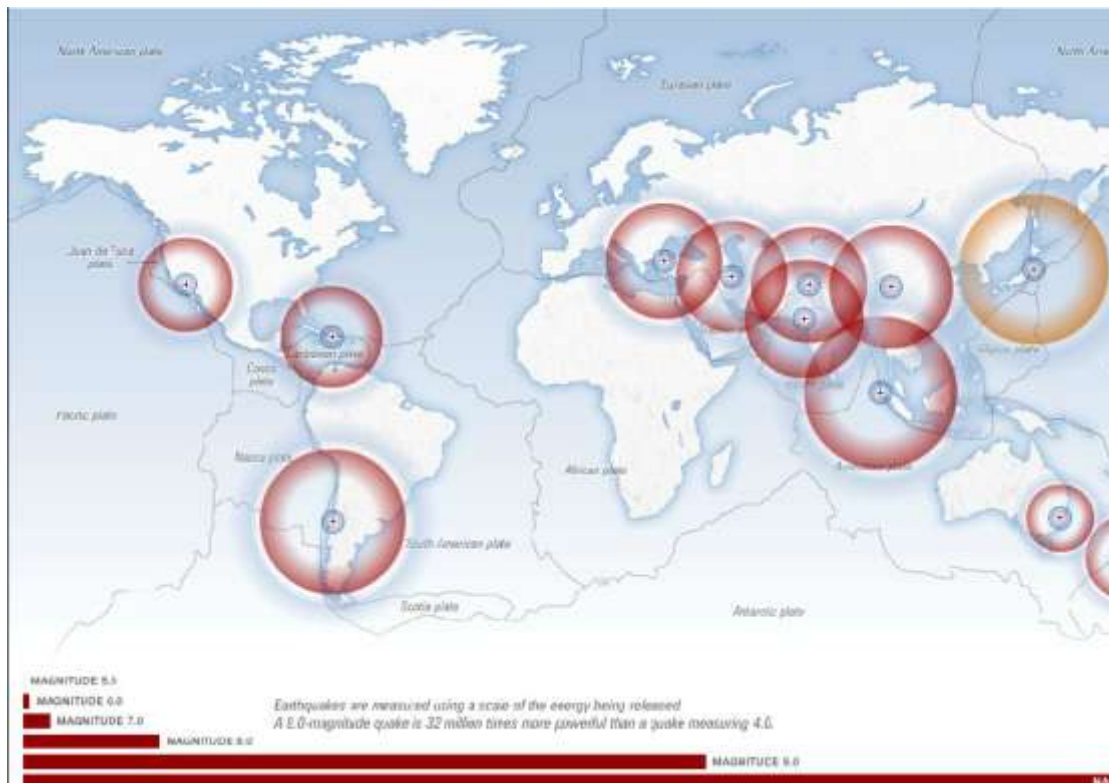
Comparison of notable earthquakes

Updated June 09, 2011 11:36:32

Earthquakes happen around the world on a daily basis, every so often wreaking havoc on the regions they strike, killing hundreds of thousands of people, tearing down buildings, damaging infrastructure and triggering deadly tsunamis. Roll over the points on the map to view recent notable earthquakes and the impact they've had.

By ABC News Online designer Ben Spraggon; Reporting Amy Simmons

Sources: [Geoscience Australia](#); [USGS](#)



GO TO LINK=>

<http://www.abc.net.au/news/2011-06-09/comparison-of-notable-earthquakes/2752310>

Environmental mapping

Radiation Maps for Japan

Researchers map the fallout from Fukushima.

By Ruth Williams | November 14, 2011



Scientists have constructed local and nation-wide maps of the radioactive particles that rained down when the Fukushima Daiichi nuclear power plant failed after a massive earthquake and tsunami rocked Japan last March. The fallout maps, published today (November 14) in *Proceedings of the National Academy of Sciences*, will help direct decontamination efforts to the worst affected areas.

Go To Link=>

<http://the-scientist.com/2011/11/14/radiation-maps-for-japan/>

New sonar maps show East Coast at risk of tsunamis, too

Ongoing 5-year investigation led by USGS was requested by nuclear regulatory agency

By Charles Q. Choi

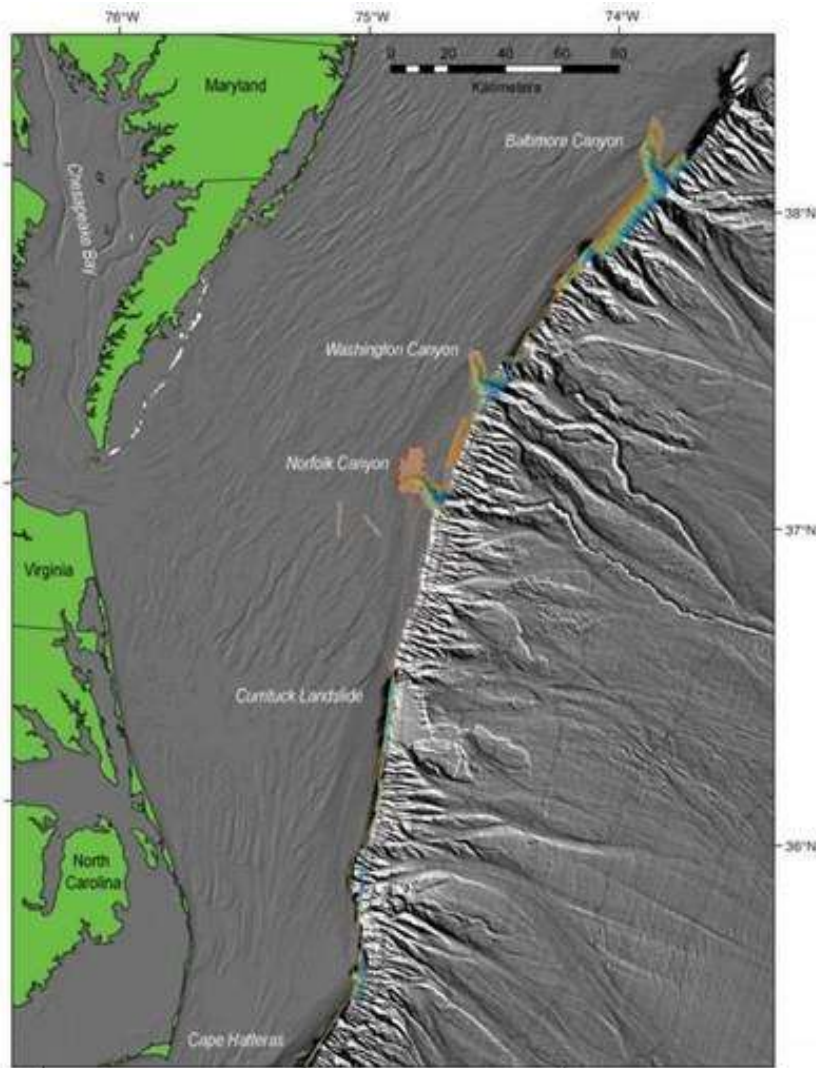
updated 11/10/2011 11:58:38 AM ET

The East Coast of the United States isn't the first place that comes to mind as being at risk of tsunamis, but new sonar maps are now helping to show that these risks do exist.

For about the past five years, researchers at the U.S. Geological Survey, along with other governmental and academic partners, have been gauging the potential for [tsunamis generated by landslides](#) in submarine canyons in the mid-Atlantic to strike the U.S. Atlantic and Gulf of Mexico coasts.

Mapping mission

Investigators set out to map key areas of the Atlantic continental margin in high-resolution, work that could uncover more about these hazards.



Go To Link=>

http://www.msnbc.msn.com/id/45241679/ns/technology_and_science-science/#.Tr4LVHLO25g

WaterAid's Innovative Mapping Tool, Developed by Collabera, Receives UK Charity Award

press release

Oct. 24, 2011, 7:43 a.m. EDT

LONDON, Oct 24, 2011 (BUSINESS WIRE) -- International charity WaterAid received a high commendation for the development and effective use of its innovative water supply monitoring tool at The Charity Times Awards 2011. Named the 'Water Point Mapper', the novel tool received this commendation in the 'Best Use of Technology' category.

The monitoring and mapping of rural water supply services was a complex process involving the use of expensive Geographical Information System-based software tools. WaterAid joined hands with Collabera, a leading global IT solutions provider, to address this complexity.

Go To Link=>

<http://www.marketwatch.com/story/wateraid-innovative-mapping-tool-developed-by-collabera-receives-uk-charity-award-2011-10-24>

Regional Workshop on Mapping Pacific Cultural Heritage Sites

Monday, October 24, 2011 9:18 AM
BY SECRETARIAT OF THE PACIFIC COMMUNITY

Participants attending a sub-regional workshop on mapping cultural heritage sites along the Coral Coast in Sigatoka were informed of the significant role physical mapping plays in the preservation of endangered cultural heritage sites.

Part of the workshop involved a site mapping exercise in Tavuni Hill Fort, in the interior of Nadroga.

Go To Link=>

<http://solomontimes.com/news.aspx?nwID=6556>

ICTO help sought for geo-hazard map of PH

Posted on 25 Oct 2011 at 6:08pm

A member of the House of Representatives has asked the government to tap the technical expertise of the Information and Communications Technology Office (ICTO) to come up with a nationwide geo-hazard map that will allow officials to carry out simulations for typhoons, flooding, and earthquakes.

Cagayan representative Jack Enrile said Malacañang must seek the aid of the ICTO to simulate scenarios and generate data that can assist the National Disaster Risk Reduction and Management Council (NDRRMC) and Department of Social Welfare and Development in planning their operations.

Enrile said an accurate, detailed and up-to-date geo-hazard map will significantly improve both the national and local government units' capacity to draw up and implement disaster response plans.

Go To Link=>

<http://newsbytes.ph/2011/10/25/icto-help-sought-for-geo-hazard-map-of-ph/>

Mapping the formation of an underwater volcano

Posted On: October 28, 2011 - 2:31pm

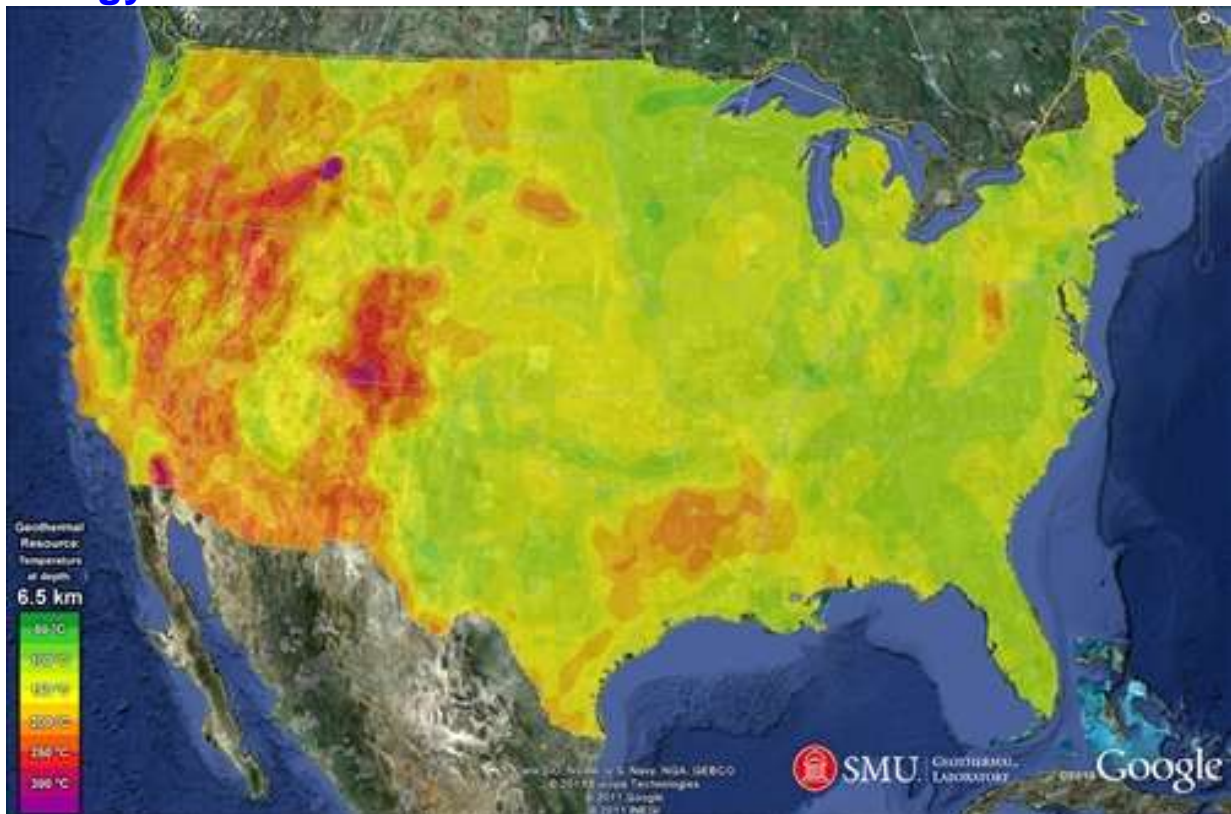
On Oct. 9 an underwater volcano started to emerge in waters off El Hierro Island in the Canaries, Spain. Researchers of the Spanish Institute of Oceanography (IEO, Ministry of Science and Innovation) only needed 15 days to map its formation in high resolution. The volcanic cone has reached a height of 100 m and the lava tongue flows down its side, even though its activity has slowed down in the past few days. "This is probably the first time that such a young underwater volcano has been mapped in such high resolution," explains Juan Acosta, head of the IEO campaign set to study the volcanic cone that emerged this month near El Hierro island in the Canaries.

On the 9th October, scientists of Spain's National Geographic Institute (Spanish Ministry of Development) detected the initial seismic movements that gave way to the birth of the underwater volcano. Then, by the 24th of this month, scientists on board the IEO's ship Ramón Margalef had already completed the bathymetry (mapping of the sea bed) with unprecedented precision.

Go To Link=>

http://www.sciencecodex.com/read/mapping_the_formation_of_an_underwater_volcano-80537

Energy from hot rocks abounds



A new map shows the vast potential for geothermal energy across the U.S.

By John Roach

Clean, accessible, reliable and renewable energy equivalent to 10 times the installed capacity of coal power plants in the U.S. is available from the hot rocks under our feet, according to the results of a new mapping study.

The energy, called geothermal, is generated from heat found deep below the Earth's surface. While there's some geothermal developed in the western U.S., it was previously thought lacking in the eastern portion of the country.

Now, researchers at [Southern Methodist University](http://www.smu.edu), with funding from [Google.org](http://www.google.com), have compiled geological data from 35,000 sites across the U.S.

Go To Link=>

http://futureoftech.msnbc.msn.com/_news/2011/10/27/8509629-energy-from-hot-rocks-abounds?chromedomain=cosmiclog

Scientists map Nepal typhoid using Google Earth

Last Updated: Monday, October 17, 2011, 17:47

London: Scientists working in Nepal have tried out a combo of cutting edge gene sequencing technology and global positioning system (GPS) to map typhoid's spread and trace its source.

More than 150 years ago, John Snow mapped cholera cases in Soho, London, tracing the source of the outbreak to a contaminated water pump.

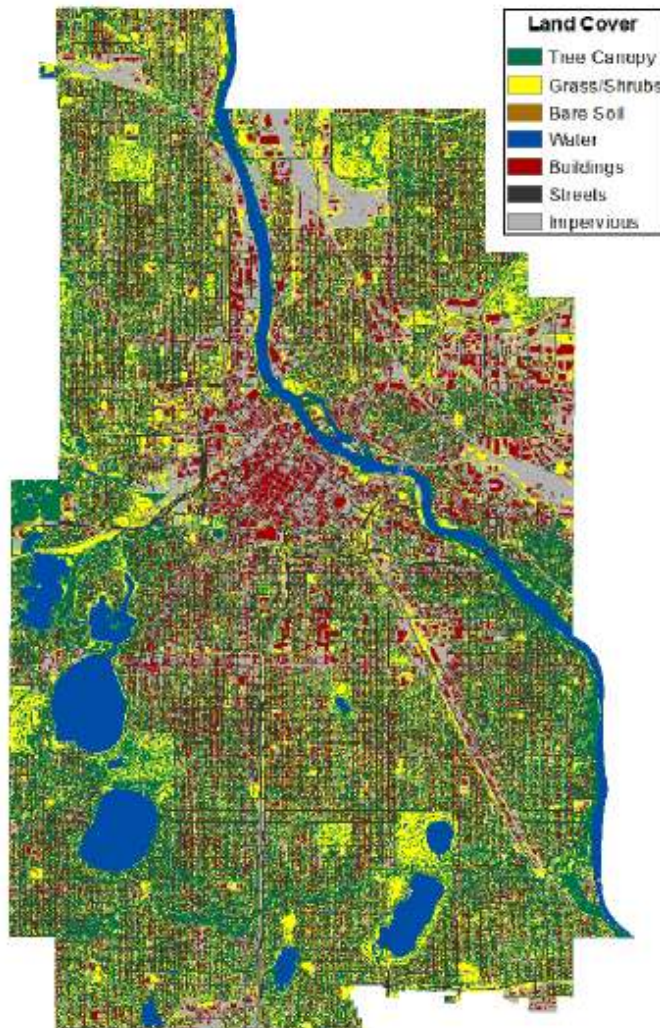


"Now, advances in technology have allowed us for the first time to create accurate geographical and genetic maps of the spread of typhoid and trace it back to its sources," said Baker.

Go To Link=>

http://zeenews.india.com/news/health/health-news/scientists-map-nepal-typhoid-using-google-earth_14212.html

Mapping Minneapolis Urban Tree Canopy



Go To Link=>

<http://www.ci.minneapolis.mn.us/sustainability/docs/MinneapolisTreeSummary.pdf>

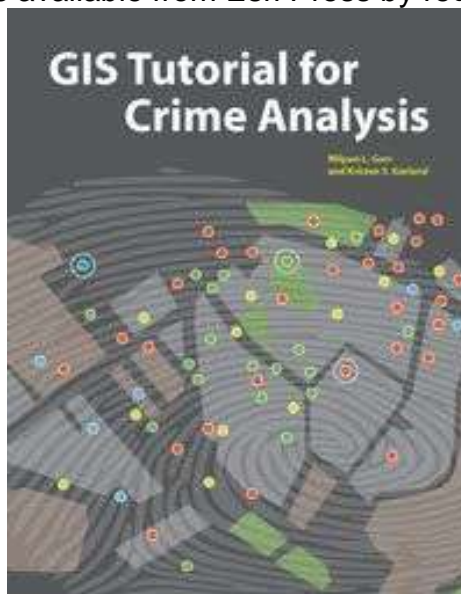
Book

Esri Press Book Presents Latest Crime Mapping and Analysis Methods

Tuesday, November 15th 2011

[*GIS Tutorial for Crime Analysis*](#), the new workbook from Esri Press, combines step-by-step tutorials with independent exercises to teach readers the skills needed to apply mapping and analysis to police work.

Designed for both classroom instruction and self-study, the book includes a 180-day trial version of ArcGIS 10 for Desktop software and real crime data obtained from the Pittsburgh Police Bureau and the Allegheny County 911 Center in Pennsylvania. An instructor resource DVD is available from Esri Press by request.



Go To Link=>

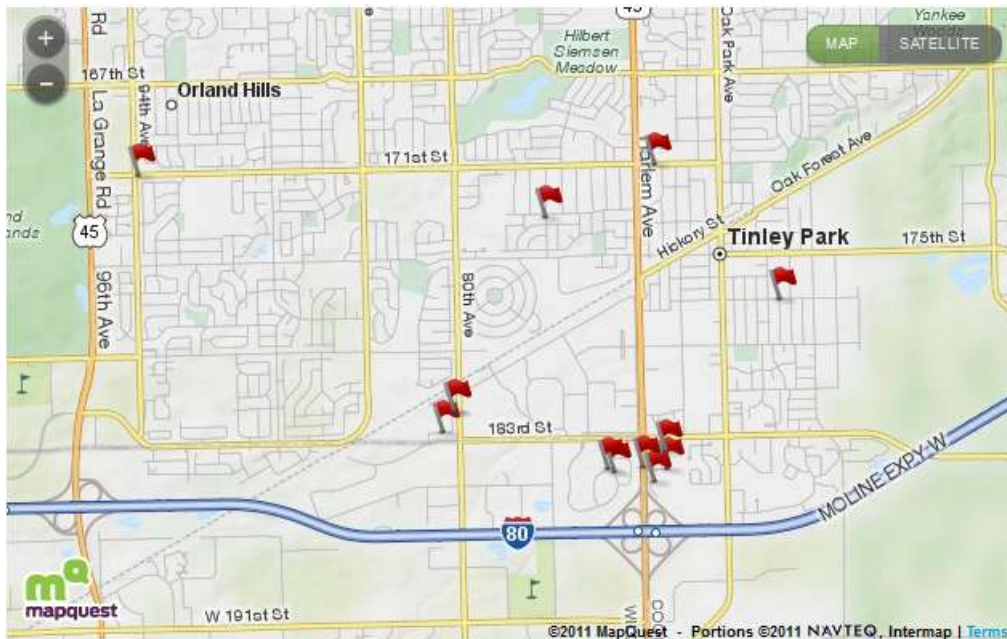
<http://www.directionsmag.com/pressreleases/esri-press-book-presents-latest-crime-mapping-and-analysis-methods/214496>

Security Mapping

Mapping it Out: A Look at October's Vehicle Break-ins

We've plotted for you the local vehicle break-ins that have been reported so far this month.

- By [Carrie Frillman](#)
- October 28, 2011



Go To Link=>

<http://tinleypark.patch.com/articles/car-burglary-map>

Now you'll be able to compare the performance of your police force to others as crime-mapping website expands

By [Emma Reynolds](#)

Last updated at 8:22 PM on 28th October 2011

Internet users will now be able to see a detailed breakdown of crimes committed in their area on the Government's improved police-mapping website.

Anyone living in England or Wales can check the police.uk website for the performance of their local officers on crime rates, quality of service and victim satisfaction.

Burglary	
Street	Incidents
1 Gladstone Mews, London	13
2 Worcester St, Birmingham	11
3 York St, Manchester	9
4 Prince St, Bristol	4
5 Marble St, Manchester	3
6 Albert Rd South, Watford	2
7 Nelson St, Newcastle	2
8 Middle St, East Sussex	2
9 Charles St, East Sussex	2
10 Crowtree Rd, Sunderland	2

Go To Link=>

<http://www.dailymail.co.uk/news/article-2054598/Crime-mapping-website-expands-Home-Offices-Police-uk-website-compare-forces.html#ixzz1c9GSRhYC>

Latest Japan hack prompts concerns it is sustained attack

By Julian Ryall in Tokyo
3:56PM BST 28 Oct 2011

Japan's mapping agency has become the latest government agency to be targeted by hackers, prompting concerns that the attacks are part of a series of sustained attacks.



Servers at the Geospatial Information Authority, the agency responsible for drawing up maps for the government, were hacked into and used to try to access servers at a private cyber security company and a university, officials said Friday.

Go To Link=>

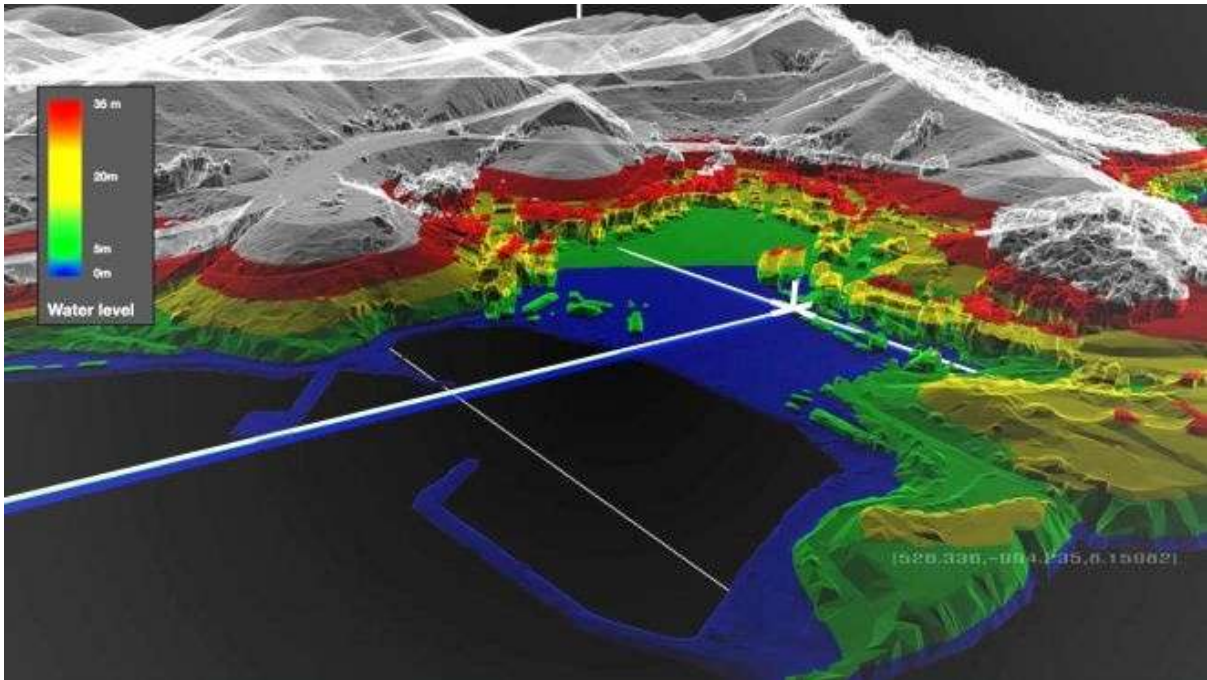
<http://www.telegraph.co.uk/technology/news/8855639/Latest-Japan-hack-prompts-concerns-it-is-sustained-attack.html>

Saab Unveils Amazing 'Magic Maps' for Military

By [Allison Barrie](#)
Published November 10, 2011
| FoxNews.com

Maps may not sound sexy. But Saab's real-time 3D maps will nonetheless make your eyes pop.

FoxNews.com can exclusively reveal this never-before-seen military technology, which can create an incredibly detailed and accurate 3D map of a battlefield and -- with the help of footage from a nearby drone as an overlay -- provide real-time information on the war zone. These maps are "geo-referenced," meaning they incorporate latitude, longitude and height, and they're accurate to within an amazing four inches.



Go To Link=>

Read more: <http://www.foxnews.com/scitech/2011/11/10/exclusive-saab-unveils-magic-maps-for-military/#ixzz1dT69sbP8>

ESRI & Ordnance Survey

Esri Incorporates Ordnance Survey OpenData into World Topographic Map

Thursday, October 27th 2011

[Esri](#) | Redlands, CA

The Ordnance Survey's (OS) small- and midscale OS OpenData products have been included in Esri's World Topographic Map, the crowdsourced map at the foundation of Esri's Community Maps program. The map service can be accessed from the basemap gallery in [ArcGIS Online](#).

The OS OpenData products incorporated into the World Topographic Map include information on roads, rivers, woodlands, administrative regions, built-up areas, and buildings representing a high level of detail. The added detail from OS OpenData significantly enhances the value and utility of geographic information for anyone working on mapping projects with British geography within the World Topographic Map.

Typically, when geospatial data holders release free data products, the information is only available in vector format that requires setup and processing before it can be used.

Go To Link=>

<http://www.directionsmag.com/pressreleases/esri-incorporates-ordnance-survey-opendata-into-world-topographic-map/211033>

Cartographer - Film

“Here” – A Film About A Cartographer

London 2011: HERE Review

by [Shelagh M. Rowan-Legg](#), October 25, 2011 3:40 PM

Cartography is a strange discipline these days. With the physical geography of the world long since mapped (though that may change with global warming,) most cartographers are either concerned with political lines, or with incredibly detailed satellite imaging made possible by current technology. What can we learn from a map? What is the correlation between the lines on a map and the road you take? And are the maps of our lives, our souls, written on our faces and bodies? Director Braden King explores these questions in his slow, quiet, and strangely moving film, **Here**.

Will (Ben Foster) is an American cartographer hired by the government of Armenia to take detailed images of the landscape for purposes that might not be quite above board. Gadarine (Lubna Azabal) is an Armenian photographer who has been away from home, and now back on a grant to take pictures of the countryside. Though both are fiercely independent, they somehow end up travelling together, engaging in debate and romance.

King, the filmmaker, asks the audience to examine our inner cartographer and cartographability.

Go To Link=>

<http://twitchfilm.com/reviews/2011/10/london-2011-here-review.php>

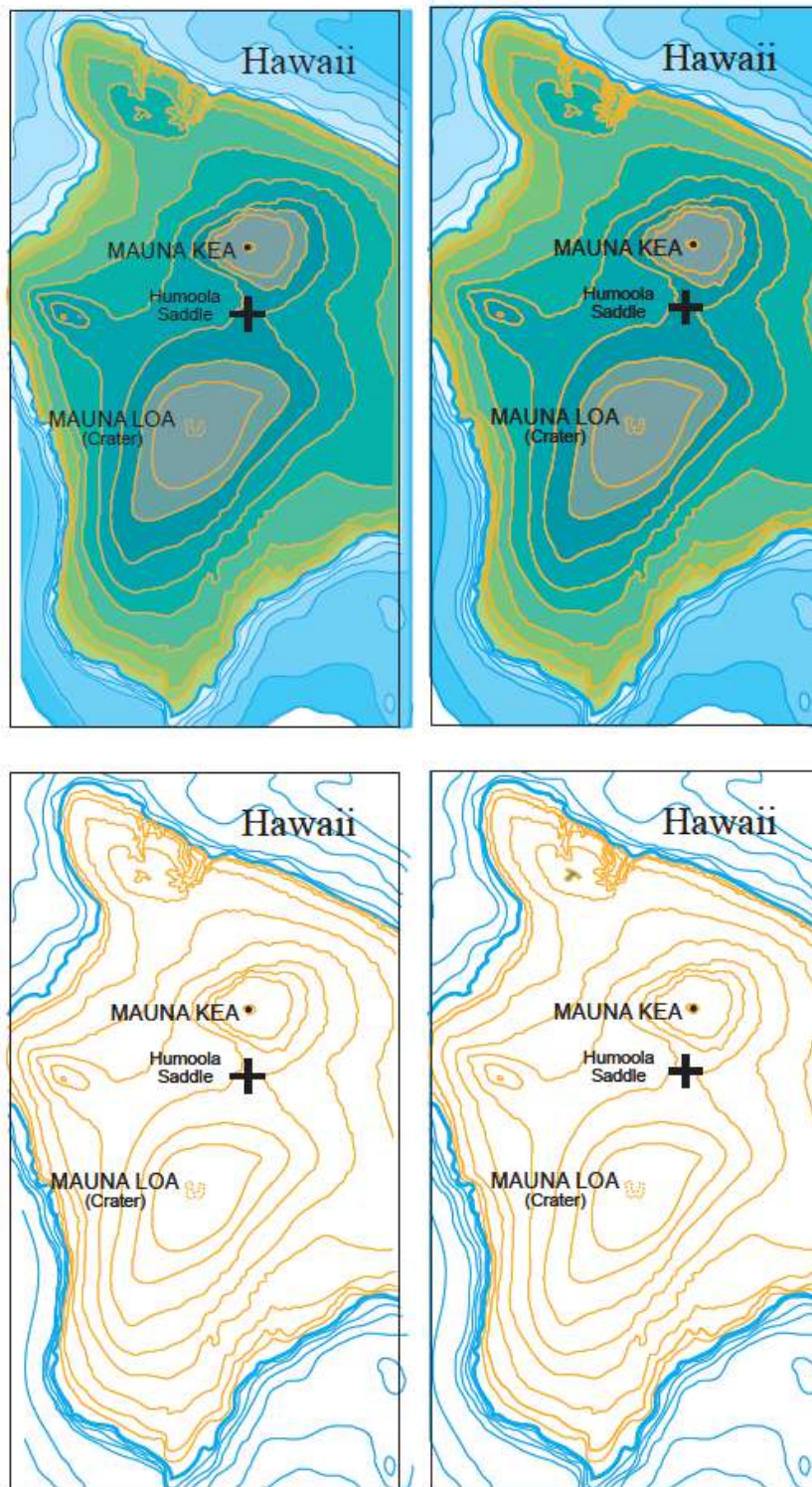
3D Maps and Images

If you have an interest in 3D images, please send your examples and they will feature in the next newsletter.



<http://www.flickr.com/photos/billdavis6959/6341364442/in/pool-62553512@N00>

Les Isdale (MSIA President, Australia) forwarded these maps to me. I have switched the images left to right so that cross-eyed viewing will produce a 3D view of Hawaii. Images need to be reversed for stereoscope viewing.



Here is another example for cross-eyed viewing:



<http://www.flickr.com/photos/voxel123/6033477031/in/pool-320246@N20/>

Also see autostereogram theory explained at:

http://en.wikipedia.org/wiki/Autostereogram#Depth_maps

Thanks go to Les Isdale for this input.

Conferences

MODSIM 2011,

12-16 December,
International Congress on Modelling and Simulation,
Perth, Australia,
mssanz.org.au/modsim2011

InterCarto-InterGIS 17

SUSTAINABLE DEVELOPMENT OF TERRITORIES: GIS THEORY AND PRACTICE

December 14-15, 2011

Belokurikha, Altai Krai (Russia)

December 18-19, 2011

Denpasar, Bali (Indonesia)

<http://conf.nsc.ru/intercarto17>.

India Geospatial Forum 2012

8 – 9 February, 2012

Three vertical conferences focusing on infrastructure (Geo-Infra), enterprise (Geo-Enterprise) and e-governance (Geo-Gov)

www.indiageospatialforum.org

The International Congress Geotunis 2012

Sixth Session

26th to 30th March 2012

Tunisia,

“The use and the applications of GIS, remote sensing and digital modeling in the field of environment and in the management of natural resources and hazards”

Mercator Revisited – Cartography in the Age of Discovery

25-28 April, 2012

International conference

Sini-Niklaas, Belgium

Contact: contact@mercatorconference2012.be

www.mercatorconference2012.be

4th International Conference on Cartography and GIS

18-22 June, 2012

Albena - summer resort on Black Sea, Bulgaria.

4TH INTERNATIONAL SYMPOSIUM ON THE HISTORY OF CARTOGRAPHY

BUDAPEST SYMPOSIUM 2012

EÖTVÖS LORÁND UNIVERSITY, BUDAPEST, HUNGARY

28 - 29 June 2012

The Symposium theme is

Exploration - Discovery - Cartography'

http://www.ichistcarto.org/index.php?option=com_content&view=article&id=38&Itemid=45

Brisbane International Geospatial Forum 2012

8 - 10 July

'Global Connections through Mapping'

Brisbane, Australia

Hosted by Mapping Sciences Institute, Australia, the Australian and New Zealand Map Society and the International Map Trade Association. A combined Conference and Trade Show.

Show. Further information:

(website) www.imtamaps.org ; (email) imtaaspac@chariot.net.au

The United Nations/Vietnam Workshop on Space Technology Applications for Socio-Economic Benefits Workshop

10 to 14 October 2011

Hanoi, Vietnam,.

Office for Outer Space Affairs

United Nations Office at Vienna

Vienna International Centre

P.O. BOX 500

A-1400 Vienna, AUSTRIA

Phone: (+43 1) 26060- 4948

E-mail: unpsa@unvienna.org

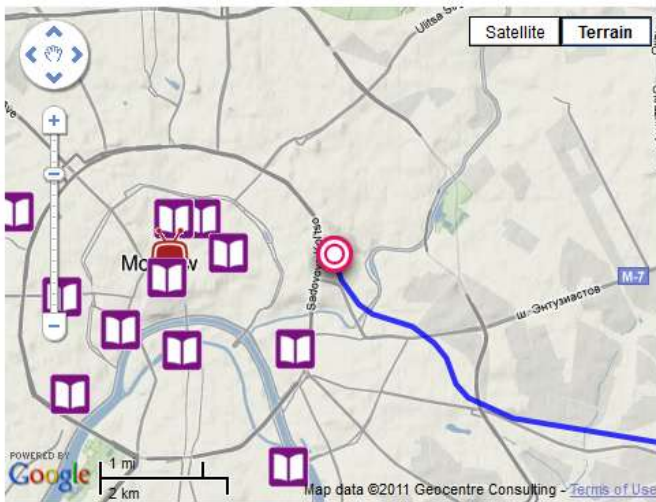
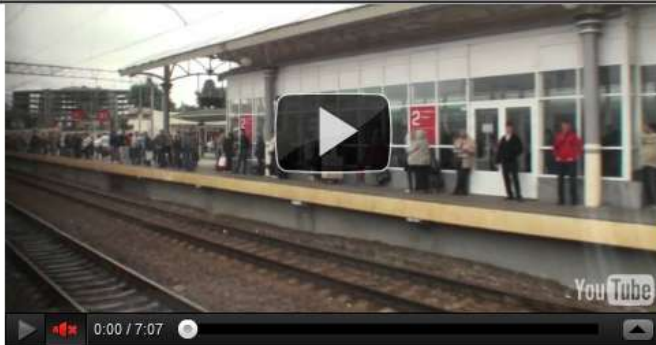
<http://www.oosa.unvienna.org/oosa/en/SAP/act2011/Vietnam/index.html>

NOTE: If you are involved in a workshop, symposium or conference related to cartography please send me brief details for the newsletter.

Linear Profiling

Trans Siberian Railway

If you like interactive maps and train trips then sit back and travel the Trans-Siberian Railway without leaving your computer (or is life too short?).



Travel route

- Moscow
- Volga river
- Kama river
- Perm
- Lower Urals, Ust-Kishert settlement
- Yekaterinburg
- Tyumen
- Irtysch river
- Clouds over Barabinskaya steppe
- Ob river

★ — the most picturesque places of the route

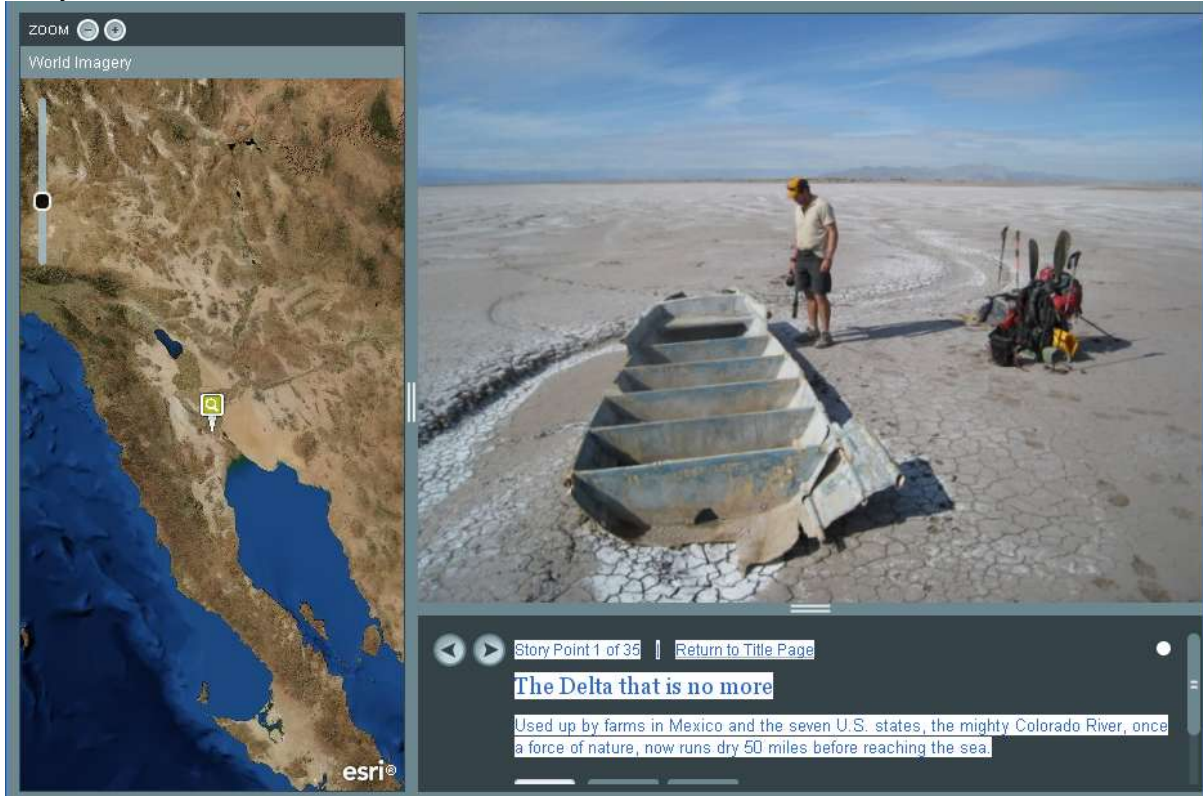
Go To Link=>

<http://www.google.ru/intl/ru/landing/transsib/en.html>

A Journey Down the Colorado River

The Colorado River Project shows how farming, population pressure and a multi-year drought have affected habitat, impacted the living ecosystem, and imperiled water supply in the Colorado River Basin. Built upon Jonathan Waterman's unprecedented river journey from source to sea.

Story Point 1 of 35



[Return to Title Page](#)

The Delta that is no more

Used up by farms in Mexico and the seven U.S. states, the mighty Colorado River, once a force of nature, now runs dry 50 miles before reaching the sea.

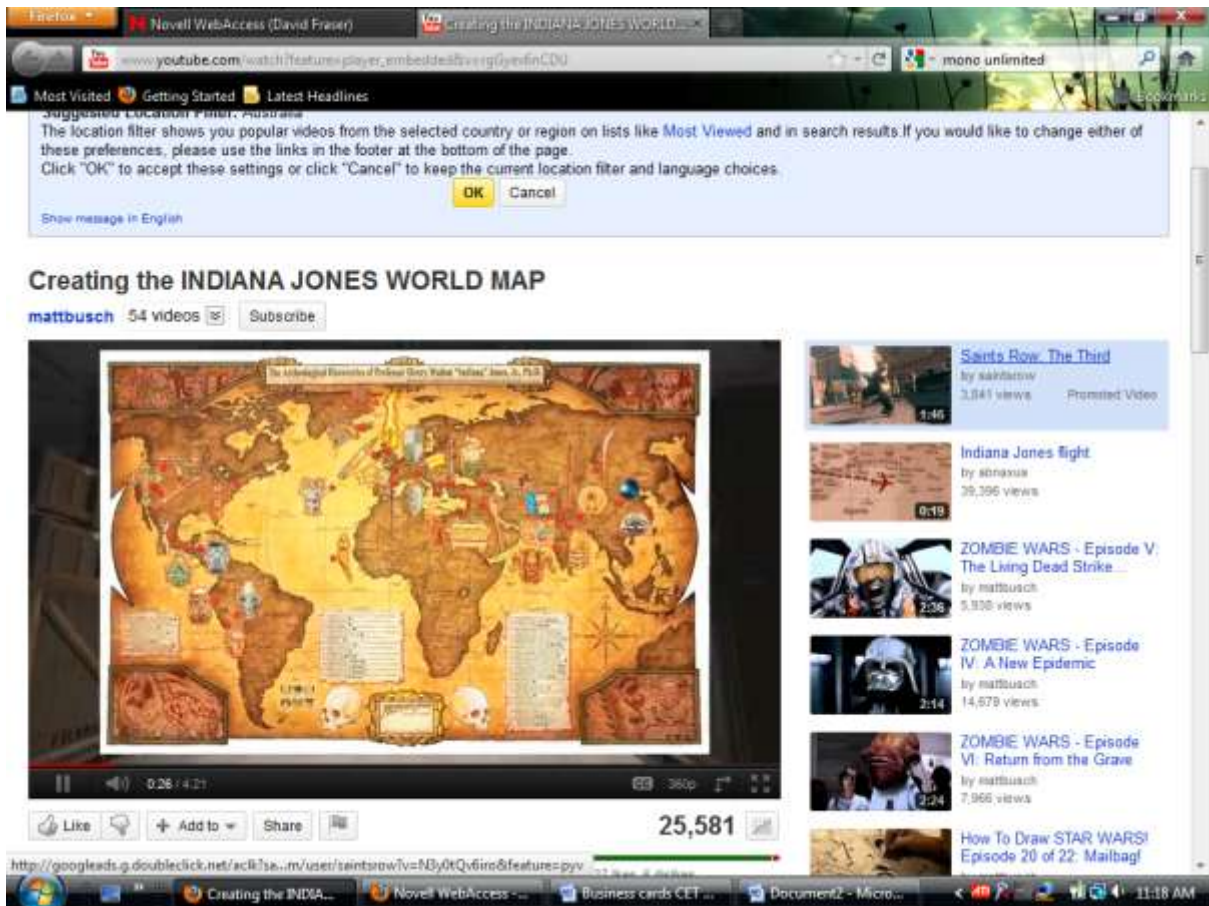
Jonathan Waterman

In 2008, Jonathan Waterman made the unprecedented, source-to-sea descent of the Colorado River, following the trailblazing Civil War hero John Wesley Powell, who first ran the unknown Grand Canyon in an 1869 scientific exploration.

Go To Link=>

<http://www.geostories.org/story/a-journey-down-the-colorado-river/ges0E87183508D1D2F56>

Raiders of the Lost Ark (Overtly commercial)



The screenshot shows a Firefox browser window displaying a YouTube video. The video title is "Creating the INDIANA JONES WORLD MAP" by the channel "mattbusch", which has 54 videos and a "Subscribe" button. The video player shows a map of the world with various locations and icons related to Indiana Jones. The video has 25,581 views and is currently at 0:26 / 4:21. Below the video player are buttons for "Like", "Add to", and "Share". To the right of the video player is a list of recommended videos, including "Saints Row: The Third", "Indiana Jones fight", and several "ZOMBIE WARS" episodes. The browser's address bar shows the URL: http://www.youtube.com/watch?feature=player_embedded&v=rgGyev6nCDU. The taskbar at the bottom shows several open applications, including "Novell WebAccess", "Business cards CEF...", and "Document2 - Micro...". The system clock shows 11:18 AM.

Go To Link=>

http://www.youtube.com/watch?feature=player_embedded&v=rgGyev6nCDU
From Laszlo Zentai