

International Cartographic Association
Association Cartographique Internationale



Commission on Education and Training

<http://lazarus.elte.hu/cet/>

October 2011 Newsletter

An occasional electronic newsletter from the Commission.

If you have any brief items of interest then please email them to
david.fraser@rmit.edu.au. for eCET.

If you have more substantial articles please send them to Igor Drecki at
i.drecki@auckland.ac.nz for the ICA newsletter.

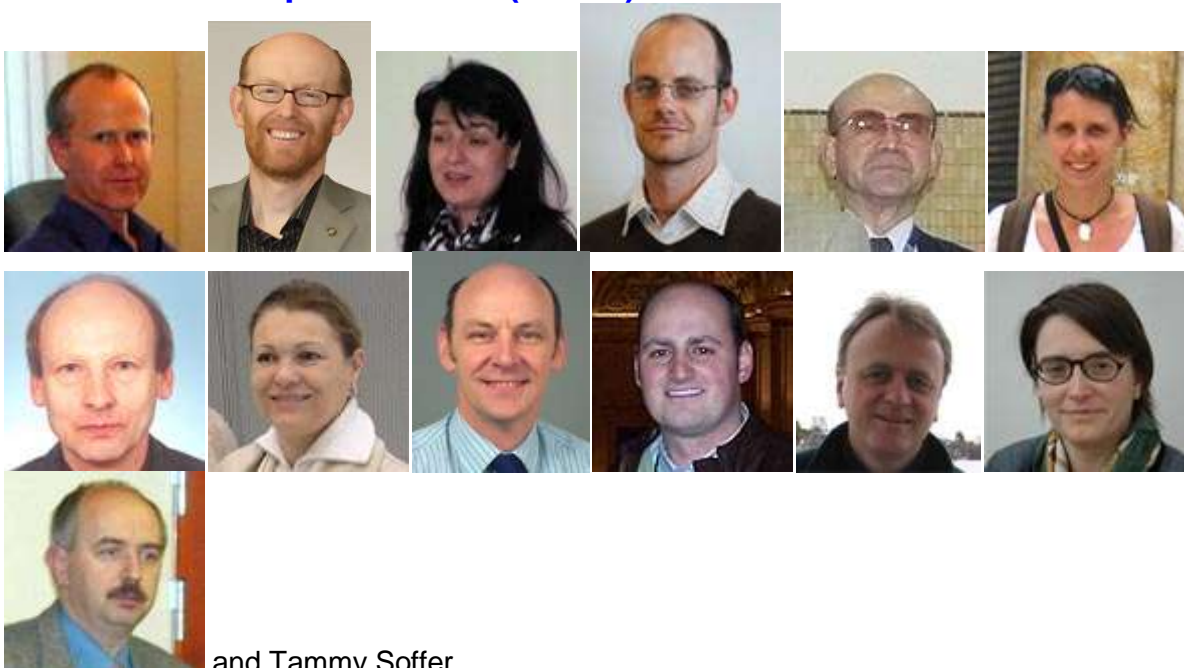
Quotes

“The location of anything is becoming everything.”

(Penn State University, 2009)

Commission Members

CET membership 2011-2015 (So far)



and Tammy Soffer

See website <http://lazarus.elte.hu/cet/> for details.

Note that Professor Laszlo Zentai is the new liaison member between CET and Executive

David Fraser is in the process of inviting more national representatives on to the Commission. For any updates please visit our website at <http://lazarus.elte.hu/cet/>

Nations represented on the Commission (as of October, 2011)

Australia Brazil Bulgaria Czech Republic Great Britain Hungary
Israel Japan New Zealand Norway United States

Two for the Diary



Ghent University and the Cultural Heritage Cell Waasland are pleased to announce that registration for the international conference 'Mercator Revisited – Cartography in the Age of Discovery' is now open.

The conference will take place from April 25th till 28th, 2012 in the city of Sint-Niklaas (Belgium). It focuses on the place of cartography in general and of Mercator in specific in the 16th century, and on different approaches to historical cartography of the Early Modern Period. Key-notes will be given by Prof. Jerry Brotton (Queen Mary, University of London), Prof. Mark Monmonier (Syracuse University), Prof. Georg Gartner (Vienna University of Technology) and Dr. Thomas Horst (Universität der Bundeswehr München).

Registration for the conference is possible through the website: www.mercatorconference2012.be/registration. On the site you can also find information on themes, venue, social events, suggestions for lodging and (over the next months) the preliminary programme.

Sincerely,
Bart Ooghe

4th International Conference on Cartography and GIS 18-22. June, 2012, Albena summer resort, BULGARIA



www.cartography-gis.com

Cartography in the News

Intel Buys Mobile Mapping Company for \$350 Million

By [Kyle Wagner](#) Oct 3, 2011 1:13 AM

Intel's chips are finally going to start showing up in phones next year, and Ultrabooks are due soon, but it looks like the world's top chip maker's making a push in mobile software, too. Intel [just bought Israel-based mapping software company Telmap](#) for \$300 to \$350 million.



Go to link:=>

<http://gizmodo.com/5845948/intel-buys-mobile-mapping-company-for-350-million>

Openworld: TomTom integrates mapping technology into Oracle business apps

'*Google Maps for enterprise users*'

By Anh Nguyen | [Computerworld UK](#) | 05 October 11

TomTom, the satellite navigation (Sat Nav) device maker, has announced the integration of its mapping technology into Oracle's business applications.

Called TomTom Geospatial for Oracle, the solution will enable users of Oracle Database 11g to integrate TomTom map and routing data into business applications and IT infrastructure that run on Oracle Database 11g.

"We integrate with MapViewer to make the picture. In the same way you can see Google Maps at home, we are enabling the same for enterprise users," George de Boer, senior manager of business development at TomTom said at the Oracle Openworld conference.

Go to link:=>

<http://www.pcadvisor.co.uk/news/software/3308849/openworld-tomtom-integrates-mapping-technology-into-oracle-business-apps/>

NSDI With Cloud Computing Technology in Indonesia

Posted by GIS talk On Friday, September 16, 2011

Indonesia's National Coordinating Agency for Survey and Mapping, BAKOSURTANAL, is taking its GIS initiatives to a whole new level by developing its NSDI using cloud computing technology – an initiative which stemmed from the agency's thrust to provide accurate and reliable geospatial information to government agencies and the general public.

Dr. Asep Karsidi, Chief of BAKOSURTANAL, [told FutureGov](#) that at the moment they are currently collaborating with Esri, a worldwide leader in GIS, to develop Indonesia's Spatial Data Infrastructure (Ina-SDI) using cloud.

Cloud computing can provide seamless sharing of information between different agencies, and also provide various opportunities for BAKOSURTANAL to become more cost-effective, productive, flexible, and efficient.

"In order to be spatially enabled, Indonesia will make spatial data acquisition complete on every scale as mandated in Indonesia's geospatial Information Laws – thus the development of the Indonesian Spatial Data Infrastructure is very critical," he said

"For the next three years we will continue to develop the NSDI to focus more on geospatial data and as well as build on capacity building for our human resources who will be custodians of our geospatial data."

Go to link:=>

<http://www.educationgis.com/2011/09/nsdi-with-cloud-computing-technology-in.html>

Google Uearth: Aussie discovers new treasures from the past - from his office

Asher Moses

September 23, 2011 - 4:51PM



A "kite" in Jordan used thousands of years ago to funnel animals into the "head" where they would be killed. *Photo: David Kennedy*

Australia has unwittingly become the Google Earth archaeology capital of the world.

After [announcing in February](#) that he had unearthed almost 2000 potential archaeological sites in Saudi Arabia from his armchair, Professor David Kennedy, from the University of Western Australia, has now uncovered thousands more

prehistoric man-made stone structures across the entire Arabian peninsula, stretching from northern Syria to Yemen.

Aerial archaeology transformed our understanding of north-western Europe two or three generations ago but Professor Kennedy said "that opportunity was lost in the Middle East". It's only now, thanks to Google Earth, that the areas that were previously off-limits to archaeologists are being fully understood.

Go to link=>

<http://www.theage.com.au/technology/technology-news/google-unearth-aussie-discovers-new-treasures-from-the-past--from-his-office-20110923-1kol7.html#ixzz1YluGxYVN>

Report: Checks needed on police GPS tracking

9:53 PM, Sep 20, 2011



WASHINGTON (AP) - A bipartisan group that includes former leaders of the FBI and Drug Enforcement Administration is calling for limits on authorities' use of GPS and other powerful technologies to track the movements of suspects.

Go to link=>

<http://www.news10.net/rss/article/155550/5/Report-Checks-needed-on-police-GPS-tracking->

Mapping the inside of the moon

NASA's latest lunar exploration will give us a never-before-seen glimpse of the moon below the surface

posted on September 12, 2011, at 4:09 PM

Though the moon is our closest neighbor in space, there's much we don't know about it. For instance: Did [a second moon](#) once crash into our moon, destroying the second moon and leaving our moon pockmarked with craters? NASA hopes to shed light on this and other questions as it sends a lunar probe named [GRAIL](#) (Gravity Recovery and Interior Laboratory) to orbit the moon. Here, a brief guide to this mission:



An artist rendering of the NASA GRAIL mission, which will measure the moon's gravitational field, and use that data to create a map of our moon's composition below the surface. Photo: NASA/JPL-Caltech [SEE ALL 80 PHOTOS](#)

Go to link:=>

<http://theweek.com/article/index/219157/mapping-the-inside-of-the-moon>

Pole-to-pole flights give new picture of greenhouse gases

Posted on September 8, 2011 - 04:25 by Kate Taylor

A three-year series of [research](#) flights from the Arctic to the Antarctic comes to an end this week, completing an unprecedented survey of greenhouse gases in the atmosphere.



The HIPPO [project](#) is aimed at generating the first detailed mapping of the global distribution of gases and particles that affect Earth's climate.

"Tracking carbon dioxide and other gases with only surface measurements has been like snorkeling with a really foggy mask," says Britton Stephens, a scientist with the National Center for Atmospheric Research ([NCAR](#)). "Finally, HIPPO is giving us a clear view of what's really out there."

Go to link:=>

<http://www.tgdaily.com/sustainability-features/58335-pole-to-pole-flights-give-new-picture-of-greenhouse-gases>

New Times Atlas Grossly Exaggerates Greenland Ice Loss

September 19, 2011 5:14 PM EDT

The Times Atlas of the World claims to be the world's most authoritative source for cartography. So, when they quite publically announced that their new edition reflected a 15 percent decrease in Greenland's ice cover as "green and ice-free," several scientists were confused.

Leading UK polar scientists came out, claiming that the Times Atlas of the World was absolutely over exaggerating and wrong to assert that it had to re-draw its map of Greenland due to climate change.

Updating the 1999 version, the 13th edition of the comprehensive atlas was released last week at a cost of \$237 (£150). It includes a number of revisions made for reasons of environmental change like the drying up of rivers such as the Colorado, the shrinking of inland waterways like the Dead and Aral Seas, and the break-up of some Antarctic ice shelves.

However, it's the bold opening statement on the atlas' glossy publicity sheet that's drawing the biggest criticism.



(Photo: Times Atlas/ Modis – Toby Benh)

The recently released 2011 Times Atlas (L) grossly exaggerates the amount of ice loss in Greenland, according to researchers at the Scott Polar Research Institute.

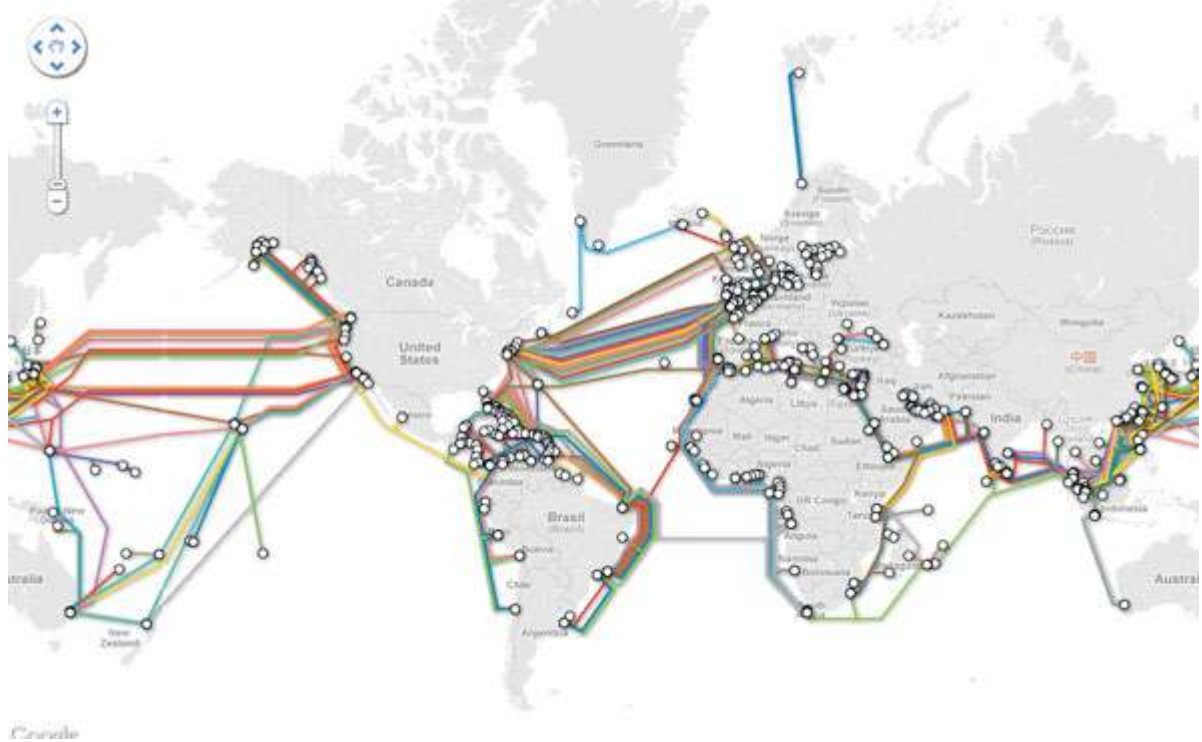
Go to link:=>

<http://www.ibtimes.com/articles/216387/20110919/times-atlas-exaggerates-greenland-ice-loss-15.htm>

View The World Of Underwater Internet Cable With New Google Map

Penned by Jay Casteel

([@JayCasteel](#)), Published 09/21/2011



Everybody takes the Internet for granted. They don't realize what it actually is. It's a global system of interconnected computer networks, but how are all these computers connected?

By miles of cables that stretch underwater from continent to continent.

The cable system is actually pretty amazing. According to [TIME.com](#), the cables are called "tubes", or "submarine communications cables, which are giant cables laid on the seabed, carrying telecommunications signals between continents, countries and small islands in between."

The TIME article says there's 121 of these systems in place right now, with another 25 planned to be in service by 2013, and now you can see where they all are on a constantly updated interactive Google Map.

Now you can see where they all are on a constantly updated interactive Google Map at [SubmarineCableMap.com](#).

Go to link:=>

<http://www.ballerstatus.com/2011/09/21/view-the-world-of-underwater-internet-cable-with-new-google-map/>

National Spatial Data Infrastructure - GIS Portal in Brazil

Posted by GIS talk On Monday, April 12, 2010

Report: The design of a new highway, the construction of a hydroelectric power plant, the installation of an industrial complex. Decisions on resource planning and management, as well as the elaboration of public and private policies, will be facilitated with the introduction of the National Spatial Data Infrastructure (INDE), to which users will have access by means of an internet portal, the SIG Brasil. Initially, the portal will integrate geospatial data of federal institutions of the Brazilian government and will permit information visualization and access, making it possible to mix geospatial information in the internet environment. During the next decade, other national organizations – at state and municipal level, for example – will be able to join INDE. The signing of INDE launch minutes will mark the portal inauguration, and will take place on April 8, at the auditorium of the Ministry of Planning, Budget and Management, in Brasília, with the presence of minister Paulo Bernardo Silva; the president of CONCAR and secretary of Strategic Planning and Investments Afonso Oliveira de Almeida; the substitute president of CONCAR and president of IBGE Eduardo Pereira Nunes; the executive secretary of CONCAR and director of Geosciences of IBGE Luiz Paulo Fortes, besides representatives of other entities.

The portal SIG Brasil is a practical result of the introduction of INDE, an initiative of the Federal Government aimed at cataloging, integrating and harmonizing geospatial data produced or kept by institutions of the Brazilian government, so that they are easily located, handled in their characteristics and accessed for the more diverse uses, by any client with internet access. INDE foresees the establishment of norms and standards for data production, storage, share and dissemination. Also, the celebration of interinstitutional agreements of data share, besides qualification and training for producers and users of such information.

Go to link:=>

<http://www.educationgis.com/2010/04/national-spatial-data-infrastructure.html>

Gregory's relegated to memory lane as directory comes to dead end

Malcolm Brown

August 19, 2011

www.ecotrafficsolutions.com.au

Boom gates, Bollards, Speed humps Line marking, Sales service & parts

THE "glovebox *Gregory's*", which has guided Sydneysiders for 75 years, has been published for the last time before being swallowed up by its big brother, the *UBD Street Directory*.

Navman, Whereis.com, Google Maps and other geographical locators have spelt the demise of the directory, which was started by a Bathurst journalist, Cecil Albert Gregory, in 1934 after he came to Sydney to work and had trouble finding his way about.

The first publication, then called *Gregory's Directory of Sydney Streets and Suburbs*, had 14,000 streets and entries such as "Mascot Aerodrome" and "Asylum for the Insane".



Book ends ... Ian Webster with first and last Gregory's. Photo: Ben Rushton

THE "glovebox *Gregory's*", which has guided Sydneysiders for 75 years, has been published for the last time before being swallowed up by its big brother, the *UBD Street Directory*.

Navman, Whereis.com, Google Maps and other geographical locators have spelt the demise of the directory, which was started by a Bathurst journalist, Cecil Albert Gregory, in 1934 after he came to Sydney to work and had trouble finding his way about.

The first publication, then called *Gregory's Directory of Sydney Streets and Suburbs*, had 14,000 streets and entries such as "Mascot Aerodrome" and "Asylum for the Insane".

The book, which reached sales of 150,000 a year, was so vital to motorists in an ever-expanding city that the company was required to publish editions that covered regions such as the central coast, Wollongong and Canberra.

It even resorted to publishing "copyright protection", deliberate mistakes in each map - such as non-existent streets and cul-de-sacs - that could be detected in copied maps.

Ilan Webster, the managing director of Universal Publishers Pty Ltd, publisher of *Gregory's* and the *UBD Street Directory*, said yesterday that the publication would not disappear completely. It will be combined with the UBD version, which has larger pages and a different "cut" of maps.

"We are not surprised with the [technological developments] because we facilitated it with our digital mapping," he said. "We provided the basis on which they operate."

The editions of *Gregory's* are not strictly annual. Originally the company published new editions only when stocks of the old ran out. But recently it has been annual and has documented changes in the city's geography.

The tramlines on the first maps are gone, and the freeways have been inserted. The farmland of places such as Castle Hill in 1960 has been swallowed up in the urban sprawl. Sydney Airport, nicely contained in 1960, now reaches far out into Botany Bay.

The hardcopy version of *Gregory's* had declined in circulation to about 50,000 a year. Old editions have become collector's items and are fetching high prices.

Go to link:=>

<http://smh.drive.com.au/roads-and-traffic/gregorys-relegated-to-memory-lane-as-directory-comes-to-dead-end-20110818-1j077.html>

Finding Maps for Free

I need a page-size map of another part of the world that I can print from my computer. Where can I find one?

There are several websites (based in America) which allow you to download and use maps of various parts of the world with few if, any, copyright restrictions provided the map is for personal or educational use. These are mostly small-scale maps (i.e. showing relatively large areas of the world). Note that not all maps on these sites are free of copyright, especially those that link to external websites.

- [The Perry Castañeda Library at the University of Texas, Austin](#)
- [The CIA World Factbook includes a reference map section](#)
- [The National Geographic Society of Washington](#)
- [The United Nations](#) offers a range of maps in pdf format for downloading; not all countries are represented, however there are regional and world maps as well as thematic maps available
- [The Houghton Mifflin Company](#)
- [About.com](#)
- The British Cartographic Society has links from its web pages to [online mapping](#)

Go to link:=>

<http://www.cartography.org.uk/default.asp?contentID=750>

Who has the answer to your mapping question?

Welcome to Q&A for cartographers, geographers and GIS professionals — check out the [FAQ!](#)

The screenshot shows the homepage of the Geographic Information Systems Stack Exchange. At the top, there is a navigation bar with links for Questions, Tags, Users, Badges, Unanswered, and Ask Question. Below this, the main content area is titled 'All Questions' and features a list of five questions. Each question entry includes the number of votes, answers, and views, the question title, a brief description, tags, the user who asked the question, and the time it was asked. On the right side, there is a 'Related Tags' sidebar listing various GIS-related tags with their respective question counts. The questions listed are:

- DEM to Slope calculation**: 0 votes, 1 answer, 9 views. Asked 49 mins ago by user2543. Tags: dem.
- Convert ESRI Integer ASCII Grid to something useful**: 0 votes, 0 answers, 12 views. Asked 2 hours ago by BWill. Tags: esri, qgis, convert.
- Mysterious MapInfo query syntax errors**: 0 votes, 0 answers, 9 views. Asked 3 hours ago by CapsicumDreams. Tags: mapinfo, sql, query.
- Convert csv files into osm with fme**: 0 votes, 0 answers, 7 views. Asked 4 hours ago by Pat. Tags: python, openstreetmap, fme, csv.
- For a ESRI Geodatabase Feature Class, which table holds the spatial reference?**: 2 votes, 2 answers, 45 views. Asked 9 hours ago. Tags: esri-geodatabase, spatial-reference.

The 'Related Tags' sidebar on the right includes: arcgis (732), arcgis-10.0 (535), arcobjects (393), python (344), postgis (263), arcgis-server (239), arcmap (233), openlayers (217), esri (207), qgis (182), raster (174), geoserver (166), arcengine (141), projection (132), c# (130), web-mapping (123), arcsde (121), shapefile (118), geoprocessing (118), data (114), arcpy (114), and google-maps (112).

Go to link=>

<http://gis.stackexchange.com/faq>

An Interactive Map of 9/11

Where Were You on Sept. 11, 2001?



Go to link=>

<http://www.nytimes.com/interactive/2011/09/08/us/sept-11-reckoning/where-were-you-september-11-map.html?scp=6&sq=map&st=cse>

Thanks go to Kathryn Germain for this item.

Gadgets

Create Your Own Street View

From the manufacturer:

The Kaiser Baas **Car Camera** is a revolutionary portable video camera unit, containing a 120 degree wide view angle, motion detection recording capabilities, a built-in microphone and a Li-ion battery all designed to securely mount to the windscreen of your car.

The unit supports a capture resolution of 1280 x 720 via a ¼ hi-res CMOS sensor, recording on to an SD card of up to 64GB and supports real time playback and real time date and time display.

The Kaiser Baas **Car Camera** uses are endless - Record your road trips or for peace of mind in the unfortunate event of an accident. It is also great for those who enjoy weekend scenic drives. The unit also has the ability to record at night utilising the built-in LED for night vision. It also consists of an onboard 5.0 mega pixel camera for snapshot capture ability.

Features

- Car Cam 1280 x 720 capture resolution with 120 degree wide view angle
- 2.5 inch TFT LCD display
- 1/4 high resolution CMOS sensor
- Video recording and playback function
- Supports real time playback and real time date and time display
- AVI video format
- Supports motion detection recording
- Built-in microphone
- Built-in LED for night vision
- Built-in rechargeable Li-ion battery
- Supports 5.0 mega pixel resolution for snapshot capture
- Supports SD memory cards up to 64GB



Car Camera
RRP:\$99.95AUD

Go to link:=>

<http://www.kaiserbaas.com/kaiser-baas-product-page/motion/car-camera>



Sports Camera

Sports camera for bicycles:

RRP: 149.95AUD

Go to link:=>

<http://www.kaiserbaas.com/kaiser-baas-product-page/motion/sports-camera>

Garmin Colorado: Rock'n'Rolling GPS



The Rock'n'Roller wheel that dominates the top of the device is surely one of the first things to catch your attention. This is primarily used for zooming in and out, as well as for browsing through the menu. The amount of detail differs from one model of [Garmin Colorado](#) to the other. For example, the 400T version comes with topographic maps for the entire USA. The 400I model, instead, features the maps of the inland lakes and rivers, while the 400C version comes with postal information.

One of the most interesting features of this GPS device is the wireless exchange of maps. On top of that, it is waterproof, comes with preloaded maps and allows you to do paperless geocaching. Two AA batteries will keep Garmin Colorado alive for up to 15 hours. Since these batteries are really cheap, you can get more of them, to make sure the GPS device does not die on you.

Go to link:=>

<http://walyou.com/gps-gadgets/>

Book

The Map That Changed the World

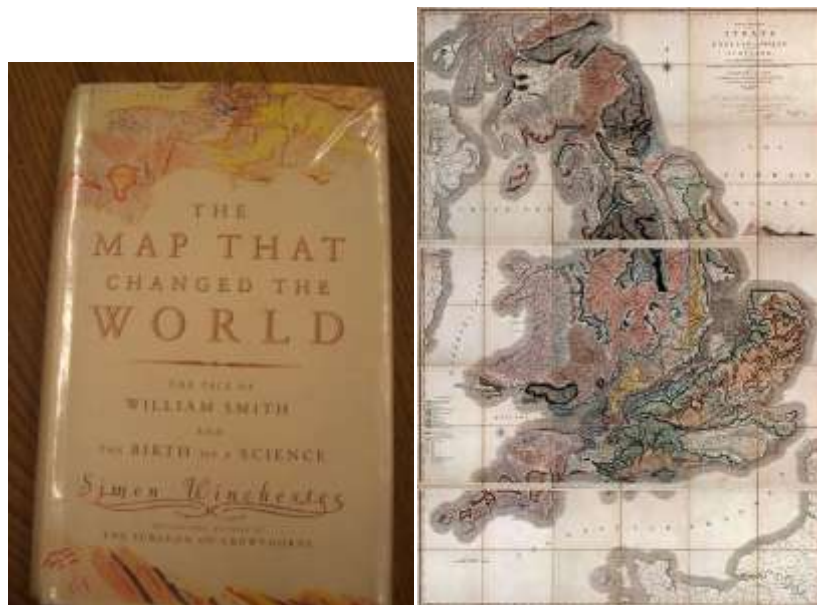
Simon Winchester

Viking, 2001

ISBN0-670-88407-3

It tells the story of geologist [William Smith](#) and his great achievement, the first [geological map](#) of [England](#) and [Wales](#). It was the first national-scale geological map, and by far the most accurate of its time. Smith's pivotal insights were that each local sequence of rock strata was a subsequence of a single universal sequence of strata and that these rock strata could be distinguished and traced for great distances by means of embedded fossilized organisms. Winchester paints a highly evocative image of the intellectual context of the time, the development of Smith's ideas and how they contributed to the [theory of evolution](#) and more generally to a dawning realisation of the true age of the earth.

http://en.wikipedia.org/wiki/The_Map_that_Changed_the_World



This, the official will explain, is the first true geological map of anywhere in the world. It is a map that heralded the beginnings of a whole new science. It is a document that laid the groundwork for the making of great fortunes – in oil, in iron, in coal, and in other countries in diamonds and tin and platinum and silver – that were won by explorers who used such maps. It is a map that laid the foundations of a field of study that culminated in the work of Charles Darwin. It is a map whose making signified the start of an era, not yet over, that has been marked ever since by the excitement and astonishment of scientific discoveries that allowed man at last to stagger out from the fogs of religious dogma, and to come to understand something certain about his own origins and those of the planet. It is a map that had an importance, symbolic and real, for the development of one of the great fundamental fields of study – geology – which, arguably like physics and mathematics, is a field of learning and endeavour that underpins all knowledge, all understanding.

Education

kdmc Combining Maps and Data Sources tutorials

KDMC produces a wealth of digital media tutorials to support our training sessions and classes. While the focus of some tutorials is on technology and journalism, most are general enough to be of use to anyone.

Maps	Combining Maps and Data Sources
QGIS basics for Journalists	Explore data with GIS maps
Using Spreadsheet Data in Google Maps and Google Earth	Help users explore your data
Google Map Basics	Create map mashups and embed them
Map Mashups: Collaboration	How to collaborate building map mashups.
ZeeMaps	Take Google maps to the next level
Geotagging and Mapping Photos	Shoot photos and geotag them with a GPS device
Map Mashup Resources	A list of relevant wikis and examples
Embedding Map Mashups	Things to consider before embedding

Go to link:=>

<http://multimedia.journalism.berkeley.edu/tutorials/>

Tool of the week for journalists – Batchgeo, for mapping data

September 13th, 2011 Posted by [Sarah Marshall](#) in [Handy tools and technology](#), [Tool of the Week](#)

Tool of the week: [Batchgeo](#)

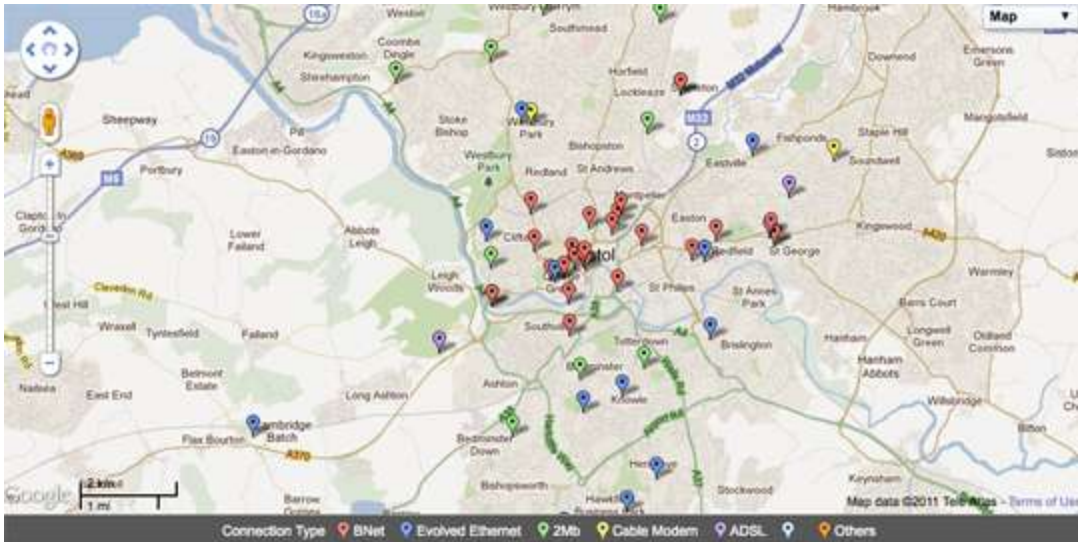
What is it? A free mapping tool. Simply paste data from a spreadsheet and see it plotted on a map.

How is it of use to journalists? Journalists who cannot code and have no technical knowledge have a wide range of tools available to them for plotting data and creating maps.

You can have a go yourself by copying and pasting data into Batchgeo. Here is a list of the [most populous countries in 2100](#), based on United Nations predictions. (You can see the data displayed as a heat map and find out [how to use Google Fusion Tables for mapping](#).)

Here is a regularly updated [spreadsheet on Nato attacks in Libya](#).

Here is a [list of Bristol City Council wifi hotspots](#).



Go to link=>

<http://blogs.journalism.co.uk/editors/2011/09/13/tool-of-the-week-for-journalists-batchgeo-for-mapping-data/>

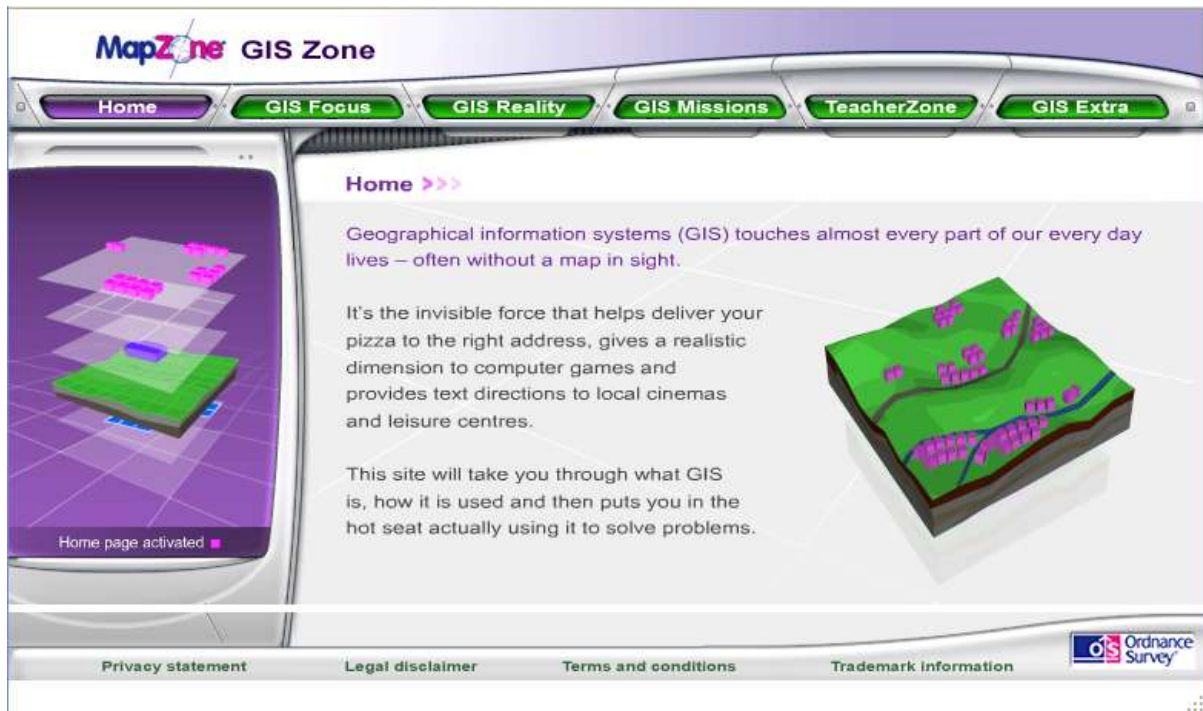
MapZone – Ordnance Survey



Go to link=>

<http://mapzone.ordnancesurvey.co.uk/mapzone/>

GIS Zone – Ordnance Survey



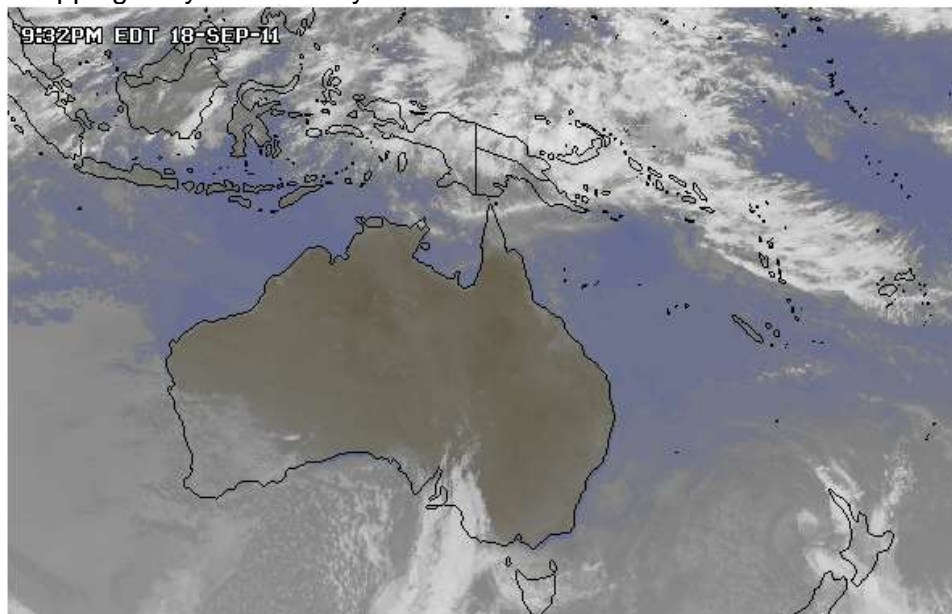
Go to link:=>

<http://mapzone.ordnancesurvey.co.uk/mapzone/giszone.html>

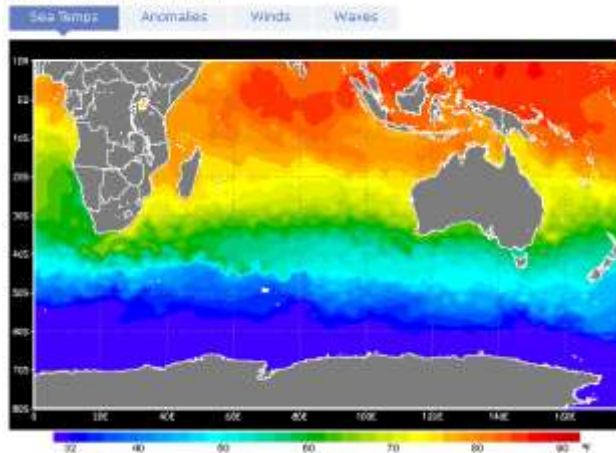
Hazard mapping

South Pacific Basin Hurricane & Tropical Storm Center

Real-time mapping of cyclone activity



South Pacific Basin Maps

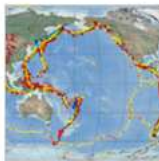


USGS Hazards program

Natural Hazards

Every year in the United States, natural hazards cost lives and billions of dollars in damage. The U.S. Geological Survey (USGS) provides policymakers and the public with a clear understanding of natural hazards and their potential threats to society, and assists with developing smart, cost-effective strategies for achieving preparedness and resilience. See ["Natural Hazards—A National Threat" Fact Sheet](#).

Earthquake Hazards



The Earthquake Hazards Program (EHP) is part of the National Earthquake Hazards Reduction Program (NEHRP) led by the National Institute of Standards and Technology (NIST). Earthquakes pose significant risk to 75 million Americans in 39 States. The EHP provides information and products for earthquake loss reduction, including hazard and risk assessment, and comprehensive real-time earthquake monitoring.

- [Real-time RSS Feeds](#)
- [Earthquake Notification Service](#)
- [Did You Feel It?](#)

["Earthquake Hazards – A National Threat" Fact Sheet](#)

Volcano Hazards



The overall objectives of the Volcano Hazards Program are to advance the scientific understanding of volcanic processes and to lessen the harmful impacts of volcanic activity. The Volcano Hazards Program monitors active and potentially active volcanoes, assesses their hazards, responds to volcanic crises, and conducts research on how volcanoes work. The Program also issues warnings of potential volcanic hazards to responsible emergency-management authorities and to the populace affected.

- [Current Alerts for U.S. Volcanoes](#)

["Volcano Hazards – A National Threat" Fact Sheet](#)

Landslide Hazards



The mission of the Landslide Hazards Program (LHP) is to provide information that leads to the reduction of losses from landslides and increase in public safety through improved understanding of landslide hazards and strategies for hazard mitigation. In pursuit of the program mission, the LHP conducts landslide hazard assessments, pursues landslide investigations and forecasts, provides technical assistance to respond to landslide emergencies, and engages in outreach activities.

- [Advisories](#)
- [Real-time Monitoring](#)

["Landslide Hazards – A National Threat" Fact Sheet](#)

["Wildfire Hazards – A National Threat" Fact Sheet](#)

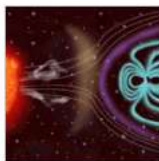
Global Seismographic Network



The Global Seismographic Network (GSN) is a permanent digital network of state-of-the-art seismological and geophysical sensors connected by a telecommunications network. The GSN provides near-uniform, worldwide monitoring of the Earth, with over 150 modern seismic stations distributed globally. The GSN was formed in partnership among the USGS, the National Science Foundation (NSF) and the Incorporated Research Institutions for Seismology (IRIS).

- [Station Status](#)

Geomagnetism



The mission of the Geomagnetism Program is to monitor the Earth's magnetic field. Using ground-based observatories, the Program provides continuous records of magnetic field variations covering long timescales; disseminates magnetic data to various governmental, academic, and private institutions; and conducts research into the nature of geomagnetic variations for purposes of scientific understanding and hazard mitigation.

- [Real-time Data](#)

Coastal and Marine Geology



The Coastal and Marine Geology Program conducts research on changes in the coastal and marine environment, whether naturally occurring or human induced. Changes in this environment can endanger our quality of life, threaten property, pose risk to fragile environments, and affect livelihoods. The management challenge faced by all coastal communities is to balance the competing needs of citizens, government, industry, and the environment. Sound marine science is critical for making such management decisions.

- [Floods](#)

Go to link:=>

http://www.usgs.gov/natural_hazards/

WHO maps noncommunicable disease trends in all countries

Country profiles on noncommunicable disease trends in 193 countries

News release

14 September 2011 | Geneva - A new WHO report features information about the noncommunicable diseases (NCDs) situation in 193 countries, as global leaders prepare to meet at the United Nations high-level meeting on noncommunicable diseases in New York, 19-20 September 2011.

"This report indicates where each government needs to focus to prevent and treat the four major killers: cancer, heart disease and stroke, lung disease and diabetes," says Dr Ala Alwan, Assistant Director-General for Noncommunicable Diseases and Mental Health at WHO.

The report includes details of what proportion of each country's deaths are due to noncommunicable diseases. Using graphs in a page per country presentation format, the report provides information on prevalence, trends in metabolic risk factors (cholesterol, blood pressure, body mass index and blood sugar) alongside data on the country's capacity to tackle the diseases.

Noncommunicable diseases are the top cause of death worldwide, killing more than 36 million people in 2008. Cardiovascular diseases were responsible for 48% of these deaths, cancers 21%, chronic respiratory diseases 12%, and diabetes 3%.

Go to link:=>

http://www.who.int/mediacentre/news/releases/2011/NCDs_profiles_20110914/en/index.html

The National Atlas of Sri Lanka - 2nd Edition

The National Atlas of Sri Lanka - 2nd Edition

ISBN 9559059041

Publisher Survey Department of Sri Lanka

Pages 243 Size 500x350mm Printed in Colour on 129gsm art-matt paper

Weight 4500 g.

Price ***AU \$ 245.99**

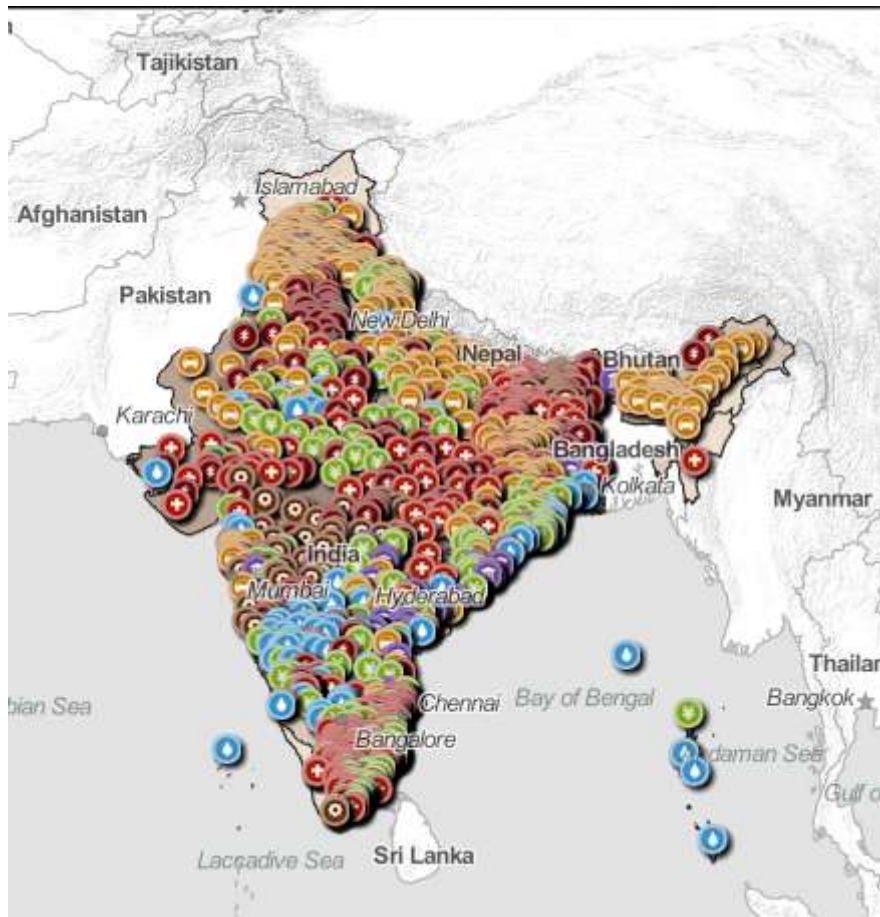
Consists of 12 major themes sub-divided into 82 sub-themes comprehensively explained in 246 cartographic images including 31 full page maps with accompanying text, tables and colour photographs

It portrays the many facets of Sri Lanka and represents physical, historical, cultural, socio-political, demographic and economic landscapes.

World Bank

Mapping for Results

Mapping for Results visualizes the locations of World Bank Bank-financed projects to better monitor development impact, improve aid effectiveness and coordination, and enhance transparency and social accountability. In combination with the subnational socio-economic indicators such as poverty, health, malnutrition, and population density it helps to better target development assistance.



Go to link:=>

<http://maps.worldbank.org/>

Community Mapping Attracts \$500,000 Award

Knight News Challenge 2011: One of the Sixteen winners, from mapping to data viz, from water shortages to interactive documentaries

June 22, 2:30 p.m.

Part of a series: [Knight News Challenge 2011](#)

Project: The Public Laboratory

Winner: The Public Laboratory for Open Technology and Science, Cambridge, Mass.

Award: \$500,000

Project lead: Jeffrey Warren

Website: www.publiclaboratory.org

Twitter: [@publiclaboratory](https://twitter.com/publiclaboratory)

To make technology work for communities, The Public Laboratory will create a tool kit and online community for citizen-based, grassroots data gathering and research. The Lab is an expansion of Grassroots Mapping – a project originated at the Center for Future Civic Media at MIT. During the project, residents used helium-filled balloons and digital cameras to generate high-resolution “satellite” maps gauging the extent of the Gulf of Mexico oil spill – at a time when there was little public information on the subject. Expanding the tool kit beyond aerial mapping, Public Laboratory will work with communities, both online and offline, to produce information about their surroundings.

Go to link:=>

<http://www.niemanlab.org/2011/06/knight-news-challenge-2011-sixteen-winners-from-mapping-to-data-viz-from-water-shortages-to-interactive-documentaries/>

Technical

New mobile Web Google Maps highlights sorry state of native iOS app

By [Casey Johnston](#)



Google released an update to the mobile Web version of Google Maps [on Friday](#), adding many features previously included in the native app—well, the Android app, anyway. The added features bring Web Maps up to par with the native app Android

users have had for some time, though the Web app is less slick on Android in comparison to the native app. The mobile Web version also makes many features available to iOS users that never made it to the native app, such as bicycling route overlays and directions.

With the new mobile Web version of Google Maps, users have access to many features that previously only existed in the desktop and Android versions of the program: clickable icons for transit stations and businesses; satellite, traffic, and bike path layers; and integration with Places pages that can include information like a business's hours and customer ratings and reviews.

The new Web version of Maps gives Android users some flexibility: if they search for a business or restaurant on Google and get a Maps result, clicking the map's picture or Get Directions button gives them an option to open it in either the Web or app version of Maps.

Once they're in the Web or native version of Maps, Android users can view the Places page, layer on traffic congestion views, and access their own maps and destinations through their Google profile. A button to the right of the search bar lets you flip back and forth between directions and the map.

Go to link=>

<http://arstechnica.com/open-source/news/2011/05/new-mobile-web-google-maps-highlights-sorry-state-of-native-ios-app.ars>

In-Car Computer Systems

Never lost, always exploring

Submitted by [Laura Scarborough](#), Community Blogger
Thursday, September 22nd, 2011, 3:17pm



Courtesy of AP Graphics

Over the years my darling husband has primarily been the driver on road trips with our family circus. I can't really offer a valid explanation except for that was how we did it. My job was to keep the circus happy, entertained, fed, medicated...whatever...just keep the kids relatively quiet. My job also was once to manage the navigation...read the map. Of course he never listened to his navigator

because being the driver, he knew a better way. Nowadays I'm no longer his traffic bitch. That is what the GPS navigator app on his smartphone is for. I gladly turned over that thankless job especially because he doesn't listen to her either. Apparently he still knows a better way...even when we are lost. Oh wait, we are never lost. We are exploring.
Um yeah, sure.

Go to link:=>

<http://manteca.news10.net/news/families/84047-never-lost-always-exploring>

Drive to set future game technology in motion

Chris Harris

September 17, 2011



The projected future of in-car entertainment, as envisioned by an RMIT team. *Photo: Supplied*

FORGET I Spy and hand-held video games - they are passe.

Soon the kids will be able to stay amused playing with three-dimensional holograms controlled by motion sensors.

The technology, similar to Microsoft's Kinetic system, is being developed by the Games and Experimental Entertainment Laboratory (GEElab) at the RMIT University.

Advertisement: Story continues below

Three-dimensional images are projected into the back seat to entertain passengers, who control the action with gestures rather than buttons and hand-held controllers - and without the need for 3D glasses.

The system can teach young passengers about their surroundings as they drive along. For example, it can project an image of a train as the vehicle passes a railway station. It can also become a mobile tour guide or provide a virtual office-like environment, allowing passengers to use the technology as an interactive computer.

Go to link:=>

<http://theage.drive.com.au/drive-to-set-future-game-technology-in-motion-20110916-1kdzo.html>

Conferences

2011 IEEE International Conference on Intelligent Computing and Intelligent Systems

(ICIS 2011) Call for Papers

November 18-20, 2011

Guangzhou, China

<http://www.ieee-icis.org>

spatial@gov(r) Conference

15 - 17 November 2011

National Convention Centre Canberra

<http://www.spatial.gov.au/>

or

<http://www.cebit.com.au/2011/conferences/spatial-at-gov>

The Surveying and Spatial Sciences Conference

November 21-25, 2011

Wellington, New Zealand.

It is a joint conference hosted by the New Zealand Institute of Surveyors and the Surveying and Spatial Sciences Institute. Please register you interests at <http://sssc2011.org>

MODSIM 2011,

12-16 December,

International Congress on Modelling and Simulation,

Perth, Australia,

mssanz.org.au/modsim2011

InterCarto-InterGIS 17

SUSTAINABLE DEVELOPMENT OF TERRITORIES: GIS THEORY AND PRACTICE

December 14-15, 2011

Belokurikha, Altai Krai (Russia)

December 18-19, 2011

Denpasar, Bali (Indonesia)

<http://conf.nsc.ru/intercarto17>.

India Geospatial Forum 2012

8 – 9 February, 2012

Three vertical conferences focusing on infrastructure (Geo-Infra), enterprise (Geo-Enterprise) and e-governance (Geo-Gov)

www.indiageospatialforum.org

The International Congress Geotunis 2012

Sixth Session

26th to 30th March 2012

Tunisia,

“The use and the applications of GIS, remote sensing and digital modeling in the field of environment and in the management of natural resources and hazards”

Mercator Revisited – Cartography in the Age of Discovery

25-28 April, 2012

International conference
Sini-Niklaas, Belgium
Contact: contact@mercatorconference2012.be
www.mercatorconference2012.be

4th International Conference on Cartography and GIS

18-22 June, 2012
Albena - summer resort on Black Sea, Bulgaria.

Brisbane International Geospatial Forum 2012

8 - 10 July (Okay a bit of overkill)
'Global Connections through Mapping'
Brisbane, Australia
Hosted by Mapping Sciences Institute, Australia, the Australian and New Zealand Map Society and the International Map Trade Association. A combined Conference and Trade Show.
Show. Further information:
(website) www.imtamaps.org ; (email) imtaaspac@chariot.net.au

The United Nations/Vietnam Workshop on Space Technology Applications for Socio-Economic Benefits Workshop

10 to 14 October 2011
Hanoi, Vietnam,
Office for Outer Space Affairs
United Nations Office at Vienna
Vienna International Centre
P.O. BOX 500
A-1400 Vienna, AUSTRIA
Phone: (+43 1) 26060- 4948
E-mail: unpsa@unvienna.org
<http://www.oosa.unvienna.org/oosa/en/SAP/act2011/Vietnam/index.html>

NOTE: If you are involved in a workshop, symposium or conference related to cartography please send me brief details for the newsletter.

Google Maps Image - Chile



Open Street Mapping

The Open Street Map site offers a tutorial in one mapping package –

Go to link:=>

<http://mapserver.org/tutorial/background.html#background>

Other sites

Go to link:=>

<http://weait.com/sotm11-keynote/keynote-sotm2011.html>, and

Go to link:=>

<http://maptogether.org/>

The Things People Do!

Places, Streets and things with your first name.

At this website you can type in a first name and it will show you on a map of the world where that name is located. In the words of the author of the software:

Last weekend, I whipped up *Version 2.0*. Coverage is now worldwide, and in addition to streets, each map includes namesake towns, parks, rivers, and more. Type your *first name* below, press *Map It!*, then click the red pushpins to zoom:

Find This First Name:

Map It! Earth It!

Okay, yes I did type in my own first name. Clicking on each map pin tells me what is located there with David as its name. There must be a deeper purpose for this surely!



Go to link==>

<http://www.datapointed.net/2011/02/maps-of-streets-places-first-names/>

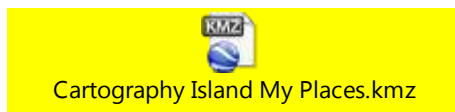
Cartography Island – Caretaker needed

Cartography Island is looking for a caretaker. You could be that person. All that is required is for the island to be maintained, the information updated and new cartography “realestate?” developed. Let David Fraser know if you can help by developing the island.

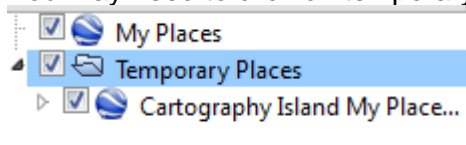
Have you been to Cartography Island?

You need Google Earth on your computer.

Then double click on the following:



You may need to click on temporary places once in Google Earth:



Then zoom in to get the full effect.



(Screen grab from Google Earth.)