

International Cartographic Association  
Association Cartographique Internationale



## Commission on Education and Training

# September 2010 Newsletter

An occasional electronic newsletter from the Commission.

If you have any brief items of interest then please email them to  
[david.fraser@rmit.edu.au](mailto:david.fraser@rmit.edu.au) for eCET.

If you have more substantial articles please send them to Igor Drecki at  
[i.drecki@auckland.ac.nz](mailto:i.drecki@auckland.ac.nz) for the ICA newsletter.

---

Quote: *"Neither the historian nor the cartographer can ever reproduce the reality they are trying to communicate to the reader of books or maps; they can but give a plan, a series of indications, of this reality. ...."*

Crane Brinton, <http://quotes.dictionary.com/subject/cartography>

### Conferences Alert!!!!

## 25<sup>th</sup> International Cartographic Conference

and the 15th General Assembly of the International Cartographic Association

3 - 8 July 2011 - Palais des Congrès - Paris

*Enlightened view on Cartography and GIS*

### 25th International Cartographic Conference

3–11 July 2011

Paris, France

Open to researchers, engineers, students, data producers and software suppliers, the ICC 2011 will be held from 4th to 8th July 2011 at the Palais des Congrès in Paris, with simultaneous proceedings in eight meeting rooms. This conference will consider the most wide-ranging issues involving cartography and geomatics. In addition to oral presentations, sessions will be organized for the presentation of work in the form of poster displays.

**PAPERS => SUBMISSION DEADLINE is now OCTOBER 12<sup>th</sup>, 2010**

**GRANTS => SUBMISSION DEADLINE is also OCTOBER 4<sup>th</sup>, 2010**

Travel awards to the ICC2011 will be granted to 35 year old or less researchers from emerging countries who specialise in Cartography or Geomatics. For more information on ICA travel awards, please go on the ICA website ([www.icaci.org/ica-awards](http://www.icaci.org/ica-awards))

Go to link > <http://www.icc2011.fr/>

## Cartography in the Media

### New Maps of Philippines Support Insurers' Assessment of Catastrophe Risk

GeoPlace.com

Issue Date: , Posted On: 9/15/2010

GfK GeoMarketing has released a new map edition of the Philippines, including a highly detailed map of the country's four-digit postcodes. These digital postcode and administrative maps offer a precise, reliable foundation for regional risk analyses.

The Philippines are particularly at risk from natural catastrophes such as tsunamis, typhoons, floods and volcanic eruptions. In 2008, the environmental organization Germanwatch ranked the Philippines eighth among countries hardest hit by natural disasters. At the same time, the country draws a significant number of investors, particularly in the energy and hotel real estate branches. Up-to-date, detailed maps with coverage of postcode and administrative boundaries comprise the foundation for risk management among insurance and reinsurance companies.



<http://www.geoplace.com/ME2/dirmod.asp?sid=&nm=&type=MultiPublishing&mod=PublishingTitles&mid=2F0B36C074B04B3DAACB3F3733414366&tier=4&id=EAEA4241DF3842968C9DC85F362A6483>

### Fascinating role of terrain in shaping city

The San Francisco Chronicle (California)

September 14, 2010 Tuesday

FINAL Edition

John King

To the extent that the phrase rings any sort of bell, "urban events" may bring to mind visions of a flash mob, a street fair or a parade with corporate sponsors.

In San Francisco, it also can mean those spots where topography and real estate collide - the seductive disruptions that in turn embody what this city has come to be.

Contentious friction absorbed by the whole, again and again and again.

This is a roundabout introduction to the best book on San Francisco I've read in years, Florence Lipsky's "San Francisco: The Grid Meets the Hills." A French architect, Lipsky uses historical maps and her own eye-popping cartography images to show how surveyors and planners tackled the steep-hilled reality of our peninsula terrain. Beyond that, she explores how the lay of the land alters not just *what* we see, but *how* we see.

<http://www6.lexisnexis.com/publisher/EndUser?Action=UserDisplayFullDocument&orgId=1593&topicId=21355&ocId=1:1263601989>

### Britain's 'seven social tribes' mapped

Wednesday, September 15, 2010

An interesting novel way of cartography when it comes to mapping Britain's 'social tribes'... A team of cartographers at London's City University have created a visualisation of Britain which makes 'the traditional map of the British Isles look outdated by comparison'. The Telegraph article reports that:..... [The mosaic-like map](#) beautifully visualises the

"Seven Social Tribes of Britain", combining postcode information with demographic data from the Government.

<http://cemore.blogspot.com/2010/09/britains-seven-social-tribes-mapped.html>

## Choosing a Chart Plotter

*Pick a plotter for your fishing style...*

September 15, 2010

By Glenn Law



[VIEW PHOTO GALLERY](#)

Chart plotters are increasingly difficult to isolate from the myriad electronic tools available to the simplest fishing boats. Even stand-alone plotters, which are still produced by most manufacturers, increasingly are built to incorporate functions besides chart plotting. The overwhelming trend in electronics is systems in which the chart plotter, usually in concert with a sounder, establishes the basic platform and hosts additional functions, ranging from radar to engine monitoring.

<http://www.saltwatersportsman.com/article/Gear-and-Techniques/Choosing-a-Chart-Plotter>

## Map of the Day: Chicago's Quilted Constituencies

Sep 13 2010, 4:52 PM ET

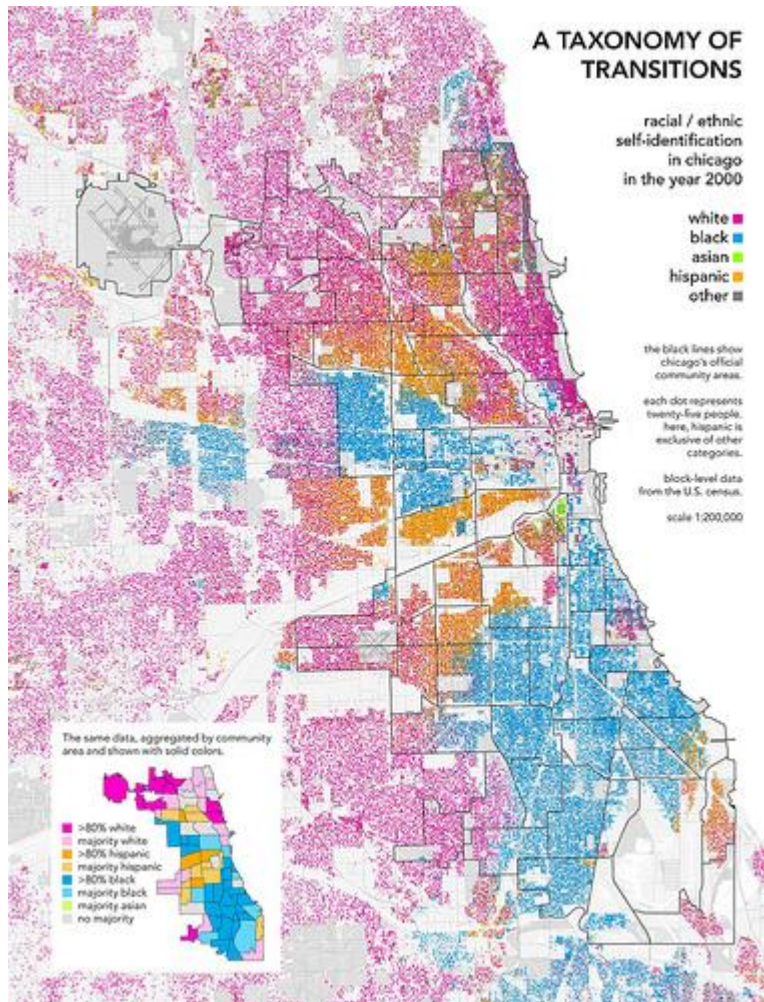
Next year, for the first time since **Harry Truman** was president, Chicagoans will vote in a mayoral election with no incumbent. **Rahm Emanuel** is obviously getting most of the buzz, but an open-answer poll by the [Chicago Tribune](#) released last Friday found that he garnered only 7 percent, behind Cook County Sheriff **Tom Dart** (12 percent) and state Sen. **James Meeks** (11 percent).

The poll shows that this race is going to be wide-open, but the map below proves that it's going to be wild. Most major American cities have distinct ethnic neighborhoods, but Chicago's are perhaps the most pronounced. I'd say it's the biggest city that has retained its neighborhoods from America's third immigration wave (1880-1920; 23 million U.S. immigrants).

If the map included white subsets of Irish, Polish, and Dutch, we'd see an even more quilted city. You'd see the Dan Ryan Expressway on the South Side skirting **Richard J. Daley's** old Ward 11 and separating his heavily Irish constituency in Bridgeport from the majority black neighborhood closer to the lake.

The most recent wave of immigrants has also made Chicago one of the most Hispanic cities in America, so whether **Luis Gutierrez** runs or not (9 percent in the polls), he is sure to be a major player.

The map below is from **Bill Rankin** at the fantastic [Radical Cartography](http://www.radicalcartography.net) site. Rankin use dots to represent ethnic populations instead of sweeping generalizations to make the map more granular and accurate.



<http://www.theatlantic.com/politics/archive/2010/09/map-of-the-day-chicagos-quilted-constituencies/62893/>

## Maps and tracking - Part One

[listen now](#) | [download audio](#)



[full image](#)

Old maps have a certain reassuring permanence about them, not so the new ones - welcome to the age of real-time cartography!

<http://www.abc.net.au/rn/futuretense/stories/2010/3000607.htm>

## Archaeology Series Opens with Talk on Roman Map-Making

Valpo Life ^ | September 2010 | Valparaiso University Relations

Posted on **Saturday, 11 September 2010 12:02:12 PM** by **SunkenCiv**

The annual Valparaiso University Archaeological Institute of America lecture series began Sept. 21 with a discussion of Roman cartography and the creation of a map that would influence Christian mapmaking for centuries.

Richard Talbert, professor of history at the University of North Carolina, discussed "The Magnificent Peutinger Map: Roman Cartography at Its Most Creative"

Talbert discussed how the ancient Romans came to realize that maps are not mere factual records, but also value-laden documents, focusing on the powerful meaning and purpose in the so-called Peutinger Map, an elongated, astonishingly rich, Roman world-map.

In Rome, as today, Talbert examined how maps can be designed to promote and reinforce values, from peace and civilization to unashamed pride in conquest and entitlement to world-rule. Talbert described recent advances developed by scholars to more effectively interpret the cartographic products of pre-modern societies.

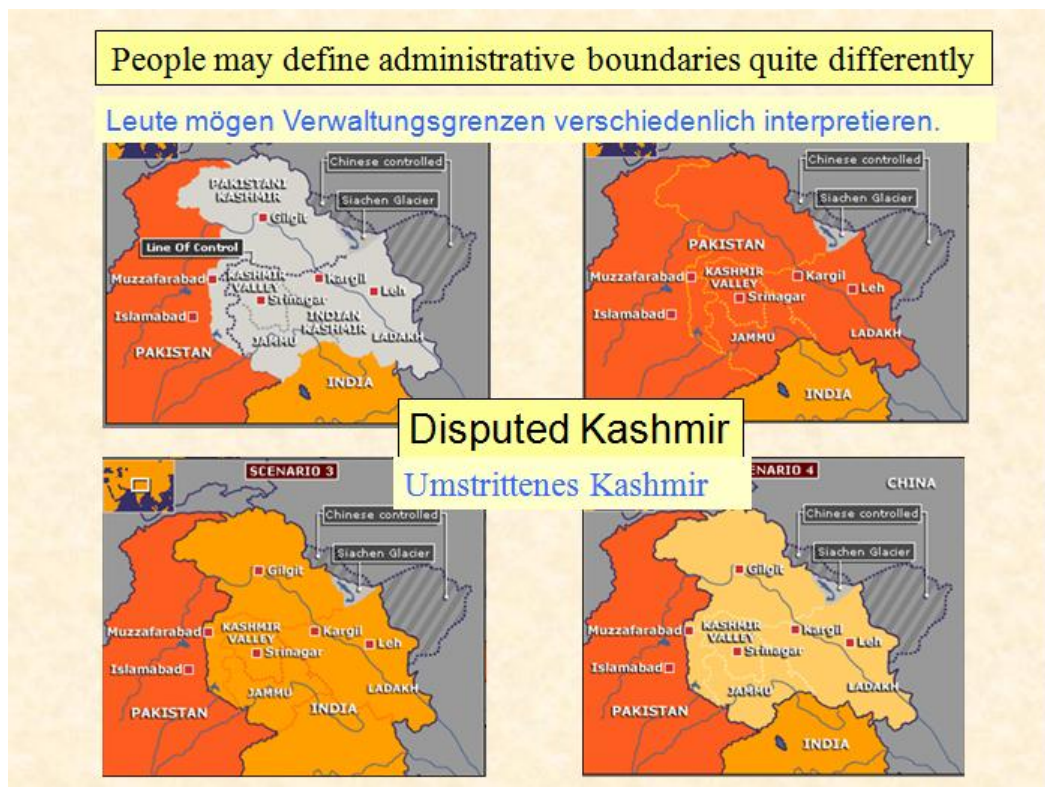
Talbert's current research focuses primarily on Greek and Roman spatial perceptions (physical and cultural), and on mapping the classical world. This year, his books "Geography and Ethnography: Perceptions of the World in Pre-Modern Societies" and "Rome's World: The Peutinger Map Reconsidered" are being published.

<http://www.freerepublic.com/focus/f-chat/2587057/posts>

## And now for a little controversy!

Cartography might lie, but topography and cultural geography does not. Kashmir is not India. Kashmir is not Pakistan. Kashmir is not China. Kashmir is the boundary zone of India-China-Pakistan. But it is distinctively Kashmir. And its people – whatever their religion or national identity – are Kashmiris. [...]

[http://brothersjuddblog.com/archives/2010/09/there\\_is\\_a\\_kashmir.html?utm\\_source=feedburner&utm\\_medium=feed&utm\\_campaign=Feed%3A+BrothersjuddBlog+%28BrothersJudd+Blog%29](http://brothersjuddblog.com/archives/2010/09/there_is_a_kashmir.html?utm_source=feedburner&utm_medium=feed&utm_campaign=Feed%3A+BrothersjuddBlog+%28BrothersJudd+Blog%29)



## The Cape of yesteryear

### Community Notes

By [Wendy Lopata](#)

September 05, 2010

"The 1858 Map of Cape Cod, Martha's Vineyard, & Nantucket" is being reprinted in response to popular demand. The book first debuted a year ago and quickly sold out by the end of the year.

This limited-edition reproduction atlas is based on the 1858 "Map of the Counties of Barnstable, Dukes and Nantucket, Massachusetts," by 19th-century New England cartographer Henry F. Walling. It was inspired by an original copy of the map held in the collection of the W.B. Nickerson Cape Cod History Archives at Cape Cod Community College.

<http://www.capecodonline.com/apps/pbcs.dll/article?AID=/20100905/LIFE/9050309/-1/rss11>

## Czechs ban Google from expanding 'Street View'

By KAREL JANICEK

Associated Press Writer

PRAGUE (AP) - Authorities in the Czech Republic have banned Google Inc. from expanding its mapping feature "Street View" in the eastern European country, an official said Tuesday. Google Czech Republic said it was not deterred by what it considered a temporary decision, and said the dispute was mostly about technical problems in collecting the photographs used in "Street View" - which provides Internet users with panoramic views and photographs of neighbourhoods from various points along many streets across the globe.

<http://www.wistv.com/Global/story.asp?S=13148510>

## Cartofictions – Julien Oliver

Posted by Luke Munn at [10:40 AM](#)

Labels: [data](#), [google](#), [visualisation](#)

From the earliest world maps to Google Earth, cartography has been a vital interface to the world. It guides our perceptions of what the world is and steers our actions in it. As our knowledge about the world has changed, so have maps with it (or so we like to think).

In this lecture Julian shows a darker side of map-making, covering various reality-distorting effects innate to the graphic language of cartography and how they can be easily exploited for gain.

<http://windowgallery.blogspot.com/2008/03/cartography-as-controversy.html>

## GIS as a Service - has Potential to Meet Growing Demand for Geospatial Technology

Written by Philip O'Doherty, CEO eSpatial

08 September 2010

GIS User

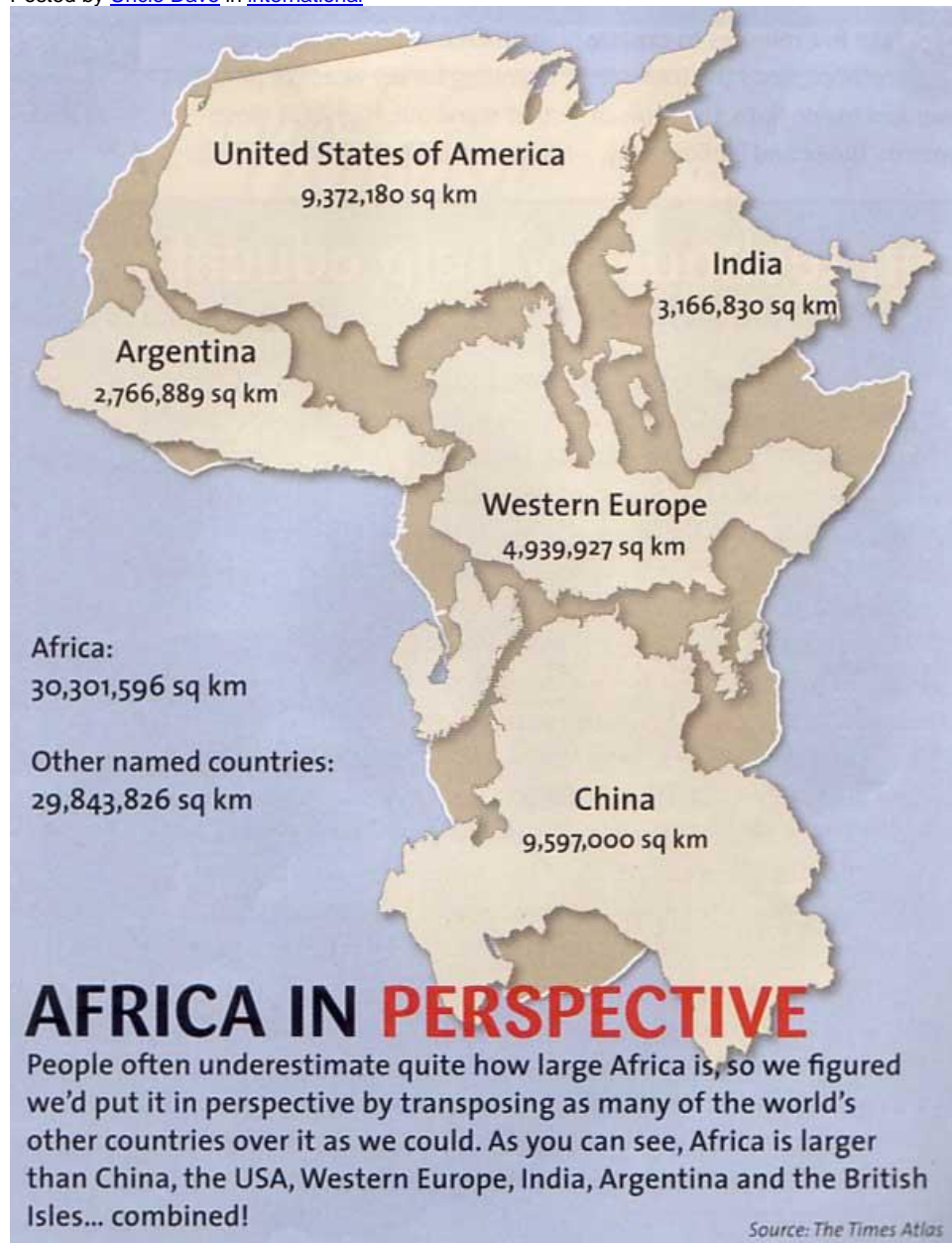
Every Cloud has a silver lining; Only "GIS as a Service" has Potential to Meet Growing Demand for Geospatial Technology

There is a growing consensus that the future of software is tied to cloud computing and software as a service. Someday, all software will run online and clunky desktop applications will be a distant memory. In a recent article for Directions Magazine I explored "[How Will GIS Companies Weather the Gathering Cloud Computing Storm?](#)" and concluded that cloud computing and the [software as a service \(SaaS\) model](#) would be the push that finally delivers GIS capabilities to a much wider corporate audience beyond its existing niche markets.

<http://www.gisuser.com/content/view/21330/28/>

## Did You Know Africa Was This Big?

Published on September 11th, 2010  
Posted by [Uncle Dave](#) in [international](#)



<http://www.dvorak.org/blog/2010/09/11/did-you-know-africa-was-this-big/>

## Risk Cartography User Guide

The Risk Cartography ([www.risk-cartography.org](http://www.risk-cartography.org)) aims at an integrative and multi-perspective knowledge platform to deal with risk controversies and to open up the debate for civil society and for better decision making and knowledge-based regulation. Risk cartographies can be explored from different perspectives following the individual needs and concerns of various users. The strategy of mapping risk controversies in the risk cartography is to address the problems of knowing respectively of evaluating by assembling heterogeneous involved elements: the mapping gathers the protagonists of risk controversies, their institutions, the issues at stake, the prominent statements, the involved materials and technologies. Moreover, it intends to go back to sources, to chronologies and underlying narratives.

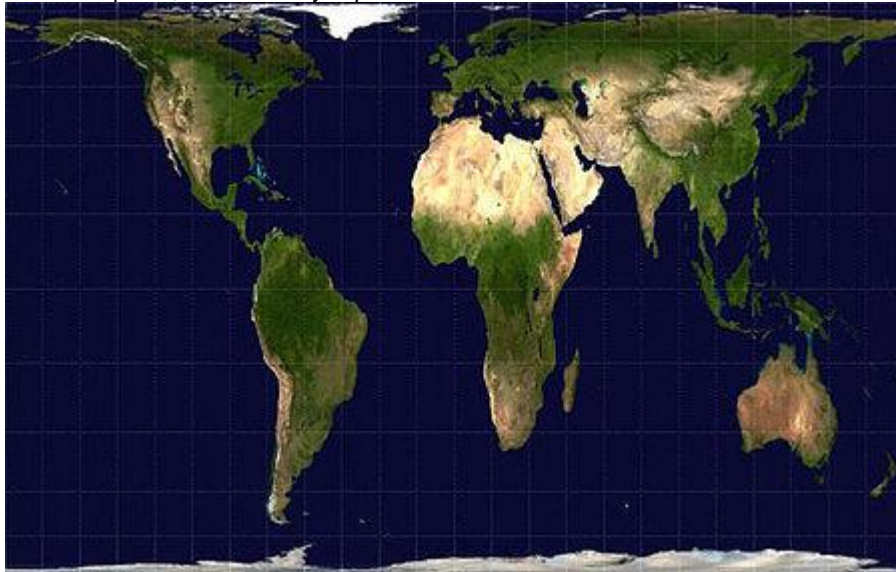
We have chosen one typical matter of concern in contemporary risk societies to explore the

features of the risk cartography from one of the case studies: the growing concern about production, use and release of nanoscale particles in industry and everyday life is mirrored by the debate around the contentious harmlessness of titanium dioxide in sunscreens with a sun protection factor above 15. Titanium dioxide is a nanoscale material engineered in the laboratory of the chemical company Degussa and known since long for its strong effect in wastewater treatment. There is a large debate about potential risks if nanoscale objects like TIO<sub>2</sub> can cross the skin, cell borders or the blood-brain barrier. It is also debated whether there are considerable risks for employees that produce these tiny particles.

<http://www.mappingcontroversies.net/Home/PlatformRiskCartography>

## Gall–Peters projection

From Wikipedia, the free encyclopaedia



Gall-Peters projection of the [Earth](#)

The **Gall–Peters projection**, named after [James Gall](#) and [Arno Peters](#), is one specialization of a configurable equal-area [map projection](#) known as the **equal-area cylindrical** or **cylindrical equal-area** projection. The Gall–Peters achieved considerable notoriety in the late 20th century as the centerpiece of a controversy surrounding the political implications of map design. Maps based on the projection continue to see use in some circles and are readily available, though few major map publishers produce them.

[http://en.wikipedia.org/wiki/Gall%E2%80%93Peters\\_projection](http://en.wikipedia.org/wiki/Gall%E2%80%93Peters_projection)

## Laser backpack measures interiors

Published: Sept. 8, 2010 at 7:53 PM

BERKELEY, Calif., Sept. 8 (UPI) –

A portable laser backpack that can produce fast, automatic and realistic 3-D mapping of difficult interior environments has been developed, officials say.

The reconnoitering backpack was developed at the University of California, Berkeley, and funded by the Air Force Office of Scientific Research and the Army Research Office, an Air Force release said Tuesday.

The backpack is the first system designed to work without having to be strapped to a robot or attached to a rolling cart.

Its data acquisition speed is very fast, collecting data in real time while the human operator is walking, in contrast to existing systems in which the data is collected in a stop-and-go fashion, resulting in days and weeks of data acquisition time, the Air Force said.

The technology will allow military personnel to collectively view the interior of modeled buildings and interact over a network in order to achieve military goals like mission planning, researchers said.

The cutting-edge technology has been successfully tested on the university campus.



"We have already generated 3-D models of two stories of the electrical engineering building at UC Berkeley, including the stairway, and that is a first," Avidah Zakhor, lead researcher and professor of electrical engineering, said.

[http://www.upi.com/Science\\_News/2010/09/08/Laser-backpack-measures-interiors/UPI-49261283989989/](http://www.upi.com/Science_News/2010/09/08/Laser-backpack-measures-interiors/UPI-49261283989989/)

## edrawing the map

By Tim O'Brien September 15, 2010



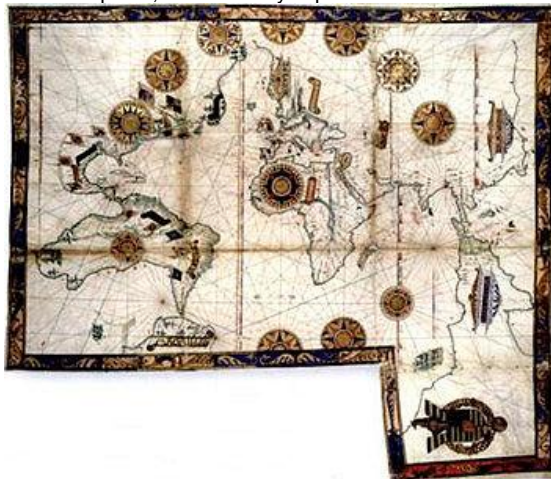
We've often heard the common piece of conventional wisdom, "You can't teach an old dog new tricks." In short, this statement means that it's difficult, perhaps impossible, for mature adults to learn new skills and abstract ideas. But is there any truth to such a statement? Neuroscientific research in the latter part of the twentieth century shows that this statement might not be as accurate as many people have previously thought.

The American neuroscientist Michael Merzenich has been conducting research in brain mapping and neuroplasticity since the 1960s, which has entailed some radical developments in the way neuroscientists view the brain.

<http://www.themuse.ca/articles/32992>

## Dieppe maps

From Wikipedia, the free encyclopedia



World map, by [Guillaume Brouscon](#), 1543.

The **Dieppe maps** are a series of world maps produced in [Dieppe](#), France, in the 1540s, 1550s and 1560s. They are large hand-produced maps, commissioned for wealthy and royal patrons, including [Henry II of France](#) and [Henry VIII of England](#). The Dieppe school of [cartographers](#) included [Pierre Desceliers](#), [Johne Rotz](#), [Guillaume Le Testu](#), [Guillaume Brouscon](#) and [Nicholas Desliens](#).

[http://en.wikipedia.org/wiki/Dieppe\\_maps](http://en.wikipedia.org/wiki/Dieppe_maps)

## Going underground: British explorers map out 'never-ending' cave network underneath Borneo jungle

By Mail Foreign Service

Last updated at 4:50 PM on 8th September 2010

Mail online

These incredible images show British scientists on an expedition to map a 'never-ending' cave network in a project that dates back more than 30 years.

The twisting network of caverns underneath Gunung Mulu National Park, in Sarawak, Borneo, contains the largest cave chamber in the world, the largest cave by volume and what is believed to be the largest cave passage.

Scientists carry out bi-annual visits into several caves and have so far mapped out an incredible 186 miles of the underground network.



Making a splash: Expedition leader Tim Allen inspects the 'Shower Head' - a calcium-formed funnel which transports rain water from the surface into caves underneath Gunung Mulu National Park, in Sarawak, Borneo

Using lasers and other equipment they measured the dimensions of different sections of the numerous caverns stretching throughout the UNESCO World Heritage site and feed them into a computer to build up the map.

Read more: <http://www.dailymail.co.uk/news/worldnews/article-1310129/British-explorers-map-cave-network-underneath-Borneo-jungle.html#ixzz0z1vWNvyS>

## Mapping norms to be improved further: Official

08:50, September 09, 2010

China Daily

Editor's note: Interactive tools like mapping and surveying have seen resurgent demand in recent times. But with the growth there have also been several questions on the credibility of the information provided by companies.

In China, the mapping and surveying sectors come under the purview of the State Bureau of Surveying and Mapping. Song Chaozhi, deputy director-general of the bureau, spoke to China Daily on the steps being taken to improve the credibility of information.

Q: What is the progress on the licenses for Internet map service providers, especially for

joint ventures between Chinese and foreign companies?

*A: We have granted first-class surveying and mapping credential certificates to 30 companies so far. Work on the second-class credential approval procedure has also started. All the licenses were issued under the Internet Map Service Professional Standards of the bureau.*

<http://english.people.com.cn/90001/90778/90862/7134661.html>

## **Esri Program Helps Nonprofits Get Started with Mapping and GIS**

GISCafe

**REDLANDS, Calif. — (BUSINESS WIRE) — September 8, 2010** — Today, Esri president Jack Dangermond announced a new program that helps qualified nonprofit organizations acquire and get started with ArcGIS geographic information system (GIS) software. The program is intended to make it much easier and more affordable for these organizations to incorporate spatial analysis, mapping, and geographic data management into their local and global efforts. Dangermond, who made the announcement at the Gov 2.0 Summit in Washington, D.C., said, "Countless nonprofit organizations with many different levels of hardworking staff and volunteers are trying to make our world a better place. With this flexible program, we hope to give these organizations the tools they need to better visualize and analyze spatial information so that they can accomplish their various missions."

<http://www10.giscafe.com/nbc/articles/1/861311/Esri-Program-Helps-Nonprofits-Get-Started-with-Mapping-GIS>

## **GPS tracks endangered turtles**

September 9, 2010 - 9:14AM

The Sydney Morning Herald

AAP

Three loggerhead turtles have swam the equivalent of a Sydney to Hobart yacht race in search of the best place to breed, new satellite data shows.

A special GPS tracking system launched by the Queensland government last year has been mapping three female loggerhead turtles' migration along the state's southern coast.

<http://news.smh.com.au/breaking-news-national/gps-tracks-endangered-turtles-20100909-151sk.html>

## **NASA satellite data aid United Nations' ability to detect global fire hotspots**

by [bjs](#) on 08. Sep, 2010 in [Blog Entry](#)

Science Blog

Written by:

Gretchen Cook-Anderson

NASA's Earth Science News Team

In the midst of a difficult fire season in many parts of the world, the United Nations' (UN) Food and Agriculture Organization has launched a new online fire detection system that will help firefighters and natural hazards managers improve response time and resource management.

The Global Fire Information Management System (GFIMS) delivers fire data from an imaging sensor aboard NASA's Terra and Aqua satellites to generate daily fire maps and images through a freely accessible Web interface. The system also dispatches detailed email alerts of the quantity and coordinates of fires, and it does so less than three hours after a satellite passes over burning land.

[http://scienceblog.com/38338/nasa-satellite-data-aid-united-nations-ability-to-detect-global-fire-hotspots/?utm\\_source=feedburner&utm\\_medium=feed&utm\\_campaign=Feed%3A+scienceblogrssfeed+%28Science+Blog%29](http://scienceblog.com/38338/nasa-satellite-data-aid-united-nations-ability-to-detect-global-fire-hotspots/?utm_source=feedburner&utm_medium=feed&utm_campaign=Feed%3A+scienceblogrssfeed+%28Science+Blog%29)

## Another big-ice Arctic thaw, say experts

Randy Boswell September 8, 2010  
The Vancouver Sun

Arctic Ocean sea ice has experienced another severe meltdown this year, with the approaching end-of-summer minimum representing the third-biggest thaw since satellite monitoring began about 30 years ago.

This year's retreat from a winter maximum of about 15 million square kilometres to a September coverage area of just five million square kilometres also means that the four greatest melts since satellite measurements began in the late 1970s have occurred in the past four years.



Photograph by: Denis Sarrazin/Center for Northern Studies/Handout/Reuters,  
<http://www.vancouversun.com/technology/Another+Arctic+thaw+experts/3496268/story.html>

## Inconvenient Ice Study: Less ice in the Arctic Ocean 6000-7000 years ago

Posted on [September 8, 2010](#) by [Anthony Watts](#)  
[Watts Up With That?](#)

Since there is so much worry about the Arctic Sea Ice extent this time of year, it is always good to get some historical perspective. According to this study, our current low Arctic ice extents are not unprecedented.

From a press release of the [Geological Survey of Norway](#):

### Less ice in the Arctic Ocean 6000-7000 years ago

Written by: Gudmund Løvø 20. October 2008

Recent mapping of a number of raised beach ridges on the north coast of Greenland suggests that the ice cover in the Arctic Ocean was greatly reduced some 6000-7000 years ago. The Arctic Ocean may have been periodically ice free.



**BEACH RIDGE:** The scientists believe that this beach ridge in North Greenland formed by wave activity about 6000-7000 years ago. This implies that there was more open sea in this region than there is today. (Click the picture for a larger image) Photo: Astrid Lyså, NGU  
<http://wattsupwiththat.com/2010/09/08/inconvenient-ice-study-less-ice-in-the-arctic-ocean-6000-7000-years-ago/>

## Fault maps could aid earthquake forecasts

Earth moved in the Chilean quake where the strain was highest.

Richard A. Lovett

Published online 8 September 2010 | Nature | doi:10.1038/news.2010.456



A detailed analysis of Chile's February quake may help seismologists to predict the severity of future tremors. LEO LA VALLE/epa/Corbis

For 100 years, scientists have thought that earthquakes are caused by 'elastic rebound', in which strain builds up across fault lines until something causes the fault to slip in a big, earthquake-producing lurch. Only now — in the aftermath of the magnitude-8.8 earthquake that rocked Chile in February this year — have scientists been able to measure all of these events in action.

In a study in Nature<sup>1</sup>, a team of geologists from the GFZ German Research Centre for Geosciences, Potsdam, compared earth movements during the Chilean earthquake to a decade's worth of measurements of strain build-up, finding that the greatest slippage indeed happened on parts of the fault that had accumulated the most strain.

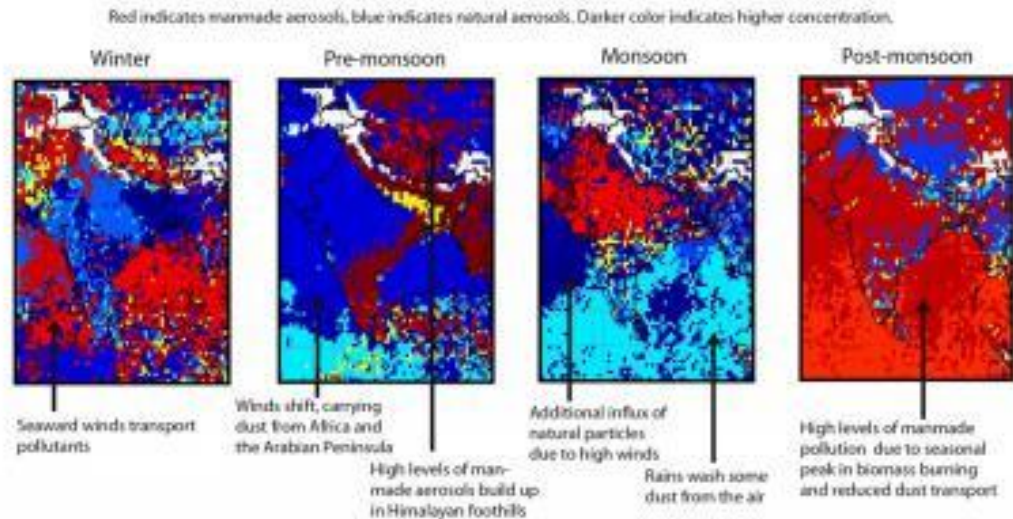
[http://www.nature.com/news/2010/100908/full/news.2010.456.html?s=news\\_rss](http://www.nature.com/news/2010/100908/full/news.2010.456.html?s=news_rss)

## Satellite data reveal seasonal pollution changes over India

By EurekAlert

CHAMPAIGN, Ill. - Armed with a decade's worth of satellite data, University of Illinois atmospheric scientists have documented some surprising trends in aerosol pollution concentration, distribution and composition over the Indian subcontinent.

In addition to environmental impact, aerosol pollution, or tiny particles suspended in the air, can be detrimental to human health by causing a range of respiratory problems. Aerosols can come from natural sources, such as dust and pollen carried on the wind, but the most hazardous aerosols are generated by human activity – soot and other hydrocarbons released from burning various fuels, for example.



Seasonal changes in manmade (red) and natural (blue) aerosol properties relative to previous season

<http://www.scimag.com/news-satellite-data-reveal-seasonal-pollution-changes-o-090810.aspx>

## Online map helps Cantabrians find services

**Published:** 6:32AM Thursday September 09, 2010

**Source:** ONE News

A Google Map has been created to help earthquake affected people in Canterbury find out what services and shops are open, and what roads and bridges are closed.

Anyone can add information to the map, and it is continuously being updated.

The Google Map, had more than 30,000 visitors on Wednesday alone, and contains around 150 points of interest.

Map creator, David Knight, says although he lives in Wellington, he was motivated to find some way of assisting the quake victims.

He said was aware this type of technology was used extensively during other international crises, such as the Haitian earthquake and Australia's Victorian bushfires, so he thought he'd kick start one for Canterbury.

"The great thing about this map is that everyone with internet access can view it and contribute to it," said Knight.

<http://tvnz.co.nz/national-news/online-map-helps-cantabrians-find-services-3767313?ref=rss>

## In-Cab Touchscreen Display meets needs of agriculture industry.

September 8, 2010

Equipped with built-in, dual-frequency receiver, CFX-750(TM) full-color, 8 in. display lets farmers choose specific guidance, steering, and precision agriculture capabilities to best fit their needs. Possible upgrades include GLONASS capabilities and section and rate control. For precision planting, display is compatible with Field-IQ(TM) crop input control system and Tru Count clutches. Visibility can be increased from cab by using 2 live video feeds on display.

<http://news.thomasnet.com/fullstory/In-Cab-Touchscreen-Display-meets-needs-of-agriculture-industry-583085>

## A Technical Look At Termite Mounds Foretells Changes in Africa's Ecosystems

by Jaymi Heimbuch, San Francisco, California on 09. 8.10  
Travel & Nature



The termites are great geologists, and watching these insects, in addition to the usual indicators like changes in tree lines and vegetation, gives researchers a new perspective on how climate change is impacting the environment on the savannas.

"By understanding the patterns of the vegetation and termite mounds over different moisture zones, we can project how the landscape might change with climate change," explained co-author Greg Asner at Carnegie. "Warming is expected to increase the variability of future precipitation in African savannas, so some areas will get more, while others get less rain. The predictions are that many regions of the savanna will become drier, which suggests more woody species will encroach on today's grasslands. These changes will depend on complex but predictable hydrological processes along hill slopes, which will correspond to pattern changes in the telltale termite mounds we see today from the air."

And it's from the air that they're studied, specifically with the Carnegie Airborne Observatory (CAO), an airborne mapping system that can scan 40,000 acres per day to create 3D images of structures including vegetation and termite mounds.

[http://www.treehugger.com/files/2010/09/a-technical-look-at-termite-mounds-foretells-changes-in-africas-ecosystems.php?campaign=th\\_rss&utm\\_source=feedburner&utm\\_medium=feed&utm\\_campaign=Feed%3A+treehuggersite+%28Treehugger%29](http://www.treehugger.com/files/2010/09/a-technical-look-at-termite-mounds-foretells-changes-in-africas-ecosystems.php?campaign=th_rss&utm_source=feedburner&utm_medium=feed&utm_campaign=Feed%3A+treehuggersite+%28Treehugger%29)

### Remote Sensing Tidbits

Wednesday, September 15, 2010

Scientists used the Carnegie Airborne Observatory, an airborne mapping system to map termite hills in Kruger Nation Park in South Africa. Why? To make sense of climate change. It turns out the hill-building is related to annual rainfall and the hills are "easy" to see in the deep forest. The research is published in the September 7, 2010, advanced online edition of Nature Communications and was done under the Carnegie Institution's Department of Global Ecology climate efforts.

<http://apb.directionsmag.com/archives/8591-Remote-Sensing-Tidbits.html>

## Tracing the big picture of Mars' atmosphere

By NASA  
Sep 8, 2010

North Texas eNews One of the instruments on a 2016 mission to orbit Mars will provide daily maps of global, pole-to-pole, vertical distributions of the temperature, dust, water vapor and ice clouds in the Martian atmosphere.

The joint European-American mission, ExoMars Trace Gas Orbiter, will seek faint gaseous clues about possible life on Mars. This instrument, called the ExoMars Climate Sounder, will supply crucial context with its daily profiling of the atmosphere's changing structure.

The European Space Agency and NASA have selected five instruments for ExoMars Trace Gas Orbiter. The European Space Agency will provide one instrument and the spacecraft. NASA will provide four instruments, including ExoMars Climate Sounder, which is coming from NASA's Jet Propulsion Laboratory, Pasadena, Calif.

Two of the other selected instruments are spectrometers -- one each from Europe and the United States -- designed to detect very low concentrations of methane and other important trace gases in the Martian atmosphere.

[http://www.ntxe-news.com/artman/publish/article\\_64178.shtml](http://www.ntxe-news.com/artman/publish/article_64178.shtml)

## Geospatial IT saves councils £230m



Rebecca Thomson email

Wednesday 08 September 2010 08:09



Geospatial technology saved councils £230m and boosted GDP by around £323m in England and Wales in 2009, according to a [report](#).

Mobile, web-mapping and satellite technologies are helping to make bin men more efficient, tell people how long it will be until a bus arrives and keep citizens informed about roadworks. Research for the Local Government Association found that the [adoption of geospatial technology](#) is now advanced enough to affect councils' budgets and efficiency.

Over the last few years internal databases have been linked, electronically stored maps have been introduced and geospatial IT has been integrated into mainstream enterprise systems, leading to mobile applications and other services that boost efficiency.

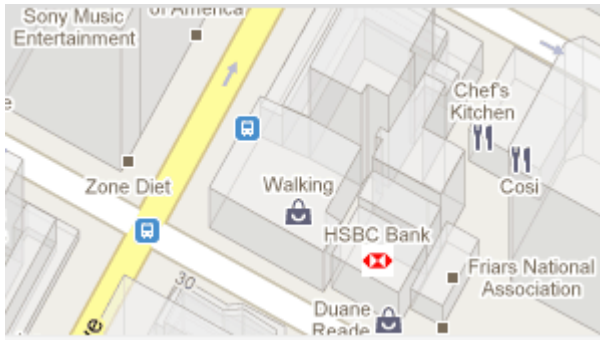
<http://www.computerweekly.com/Articles/2010/09/08/242648/Geospatial-IT-saves-councils-163230m.htm>

## Google reveals how it will make money on Maps

Posted by [Seth Weintraub](#)  
September 7, 2010 3:20 PM

Whether you use an iPhone, Blackberry or Android you may be earning Google some revenue when you use their Maps applications and APIs.





Cha-ching!

You didn't think Google (GOOG) was offering up all of those maps that you see all over the Web as just a goodwill gesture, did you? Now developers who use Google's Maps UI including Apple (AAPL), with their Maps.app on iPhone, will be supporting Google's advertising efforts.

Google will be monetizing its Maps applications and Maps APIs by letting businesses embed their logos on the maps that Google provides ... for a fee.

Google today [blogged the news](#):

Advertisers pay to have their company logos appear on the map, and to help you remember their locations the next time you're in the area. Sponsored map icons are being offered as a limited beta to companies in the U.S. with multiple locations and a well-known brand.

Participation in this beta does not affect visibility on the map; the new feature is only available to businesses that already appear on the map, and whose default icons can be swapped out for their logo.

I know some will be upset about the revelation, but this feels fair to me. I get great mapping functionality of Google Maps and at the same Google gets a few pennies every time I see an company logo. The logos aren't intrusive and actually help me recognize the landmarks I am after quicker. So who is to lose out here? Google, customers or advertisers all seem to benefit?

<http://tech.fortune.cnn.com/2010/09/07/google-reveals-how-it-will-make-money-on-maps/>

## Map giant to axe print and distribution jobs

2:00pm Tuesday 7th September 2010

Mapping giant Ordnance Survey will no longer print its own maps.

The decision which ends a 160-year-old tradition will result in the loss of 38 jobs from its Southampton HQ.

In future OS maps will be printed in Somerset and distributed from Nottingham.

Unions expressed "sadness and anger" at the end of an era and attacked the savings as "tiny".

OS bosses signed a deal with Frome printers Butler Tanner and Dennis worth up to £10m to print around 2.3 million copies a year of its 620 different maps.

[http://www.basingstokegazette.co.uk/news/regional/romsey/8376341.Map\\_giant\\_to\\_axe\\_print\\_and\\_distribution\\_obs/?ref=rss](http://www.basingstokegazette.co.uk/news/regional/romsey/8376341.Map_giant_to_axe_print_and_distribution_obs/?ref=rss)

## Carbon mapping breakthrough

07.09.2010

By integrating satellite mapping, airborne-laser technology, and ground-based plot surveys, scientists from the Carnegie Institution's Department of Global Ecology, with colleagues from the World Wildlife Fund and in coordination with the Peruvian Ministry of the Environment (MINAM), have revealed the first high-resolution maps of carbon locked up in tropical forest vegetation and emitted by land-use practices.

These new maps pave the way for accurate monitoring of carbon storage and emissions for the proposed United Nations initiative on Reduced Emissions from Deforestation and

Degradation (REDD). The study is published in the September 6, 2010, early edition of the Proceedings of the National Academy of Sciences.

[http://www.innovations-report.com/html/reports/environment\\_sciences/carbon\\_mapping\\_breakthrough\\_161182.html](http://www.innovations-report.com/html/reports/environment_sciences/carbon_mapping_breakthrough_161182.html)

## NAVTEQ Announces Real-Time Traffic in Brazil

GISCafe

**Sao Paulo — September 07, 2010** — NAVTEQ, the leading global provider of maps, traffic and location data enabling navigation, location-based services and mobile advertising around the world, announced the launch of NAVTEQ Traffic™ in Brazil, delivering comprehensive, real-time traffic information to nearly 48 million people in six major cities, including Sao Paulo, Rio de Janeiro, Belo Horizonte, Salvador, Curitiba and Porto Alegre.

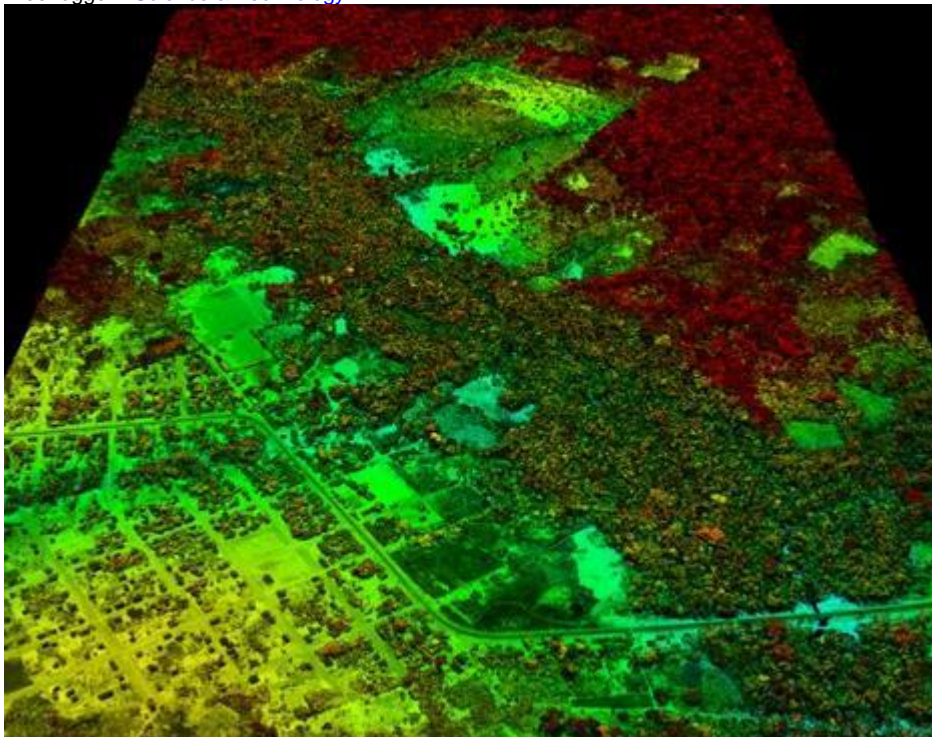
.....  
NAVTEQ Traffic is a quality-tested, comprehensive solution that links up-to-the minute traffic information to map data and enables wireless transmission directly to in-vehicle navigation systems, personal navigation devices and mobile phones. NAVTEQ Traffic delivers detailed information about current traffic conditions, allowing drivers to make better routing and re-routing decisions.

<http://www10.giscafe.com/nbc/articles/1/860172/NAVTEQ-Announces-Real-Time-Traffic-Brazil>

## First-Ever Carbon Map Shows Global Warming in Peru's Amazon

by Jeff Kart, Bay City, Michigan on 09. 6.10

Treehugger - [Science & Technology](#)



*This image shows an area of road building and development adjacent to primary forest in red tones, and secondary forest regrowth in green tones. Credit: Carnegie Institution.*

You can see the effects of global warming in a new high-resolution map that shows carbon locked up in tropical forest vegetation and emitted by land-use practices in Peru's Amazon. The maps were created with satellite mapping, airborne-laser technology, and ground-based plot surveys.

[http://www.treehugger.com/files/2010/09/carbon-map-shows-global-warming-peru-amazon.php?campaign=th\\_rss&utm\\_source=feedburner&utm\\_medium=feed&utm\\_campaign=Feed%3A+treehugger%28Treehugger%29](http://www.treehugger.com/files/2010/09/carbon-map-shows-global-warming-peru-amazon.php?campaign=th_rss&utm_source=feedburner&utm_medium=feed&utm_campaign=Feed%3A+treehugger%28Treehugger%29)

## Russia to lift ban on satellite photo mapping

21:38, September 06, 2010

The Russian government will lift restrictions on satellite photo mapping of the country's territory, the RIA Novosti news agency reported on Monday.

According to Russian federal space agency Roscosmos, the limitations will be lifted for photo mapping with the details smaller than two meters in size.

In 2006, then Defense Minister Sergei Ivanov announced the lifting of restrictions on the satellite images resolution. However, Roscosmos has not issued a permission for mapping until now.

Many regions of Russia have currently been blurred on the maps made of satellite images due to military demands.

Source: Xinhua

<http://english.peopledaily.com.cn/90001/90777/90853/7131612.html>

## Google Earth spies building-permit violators

By Eric Frazier

Posted: Monday, Sep. 06, 2010

If you're thinking about adding a new wing to your house without getting building permits, a word of warning: Google is watching.

More specifically, Google Earth, the virtual mapping program that offers satellite images and aerial photographs of locations around the world.

For the past couple of years, Mecklenburg County's code enforcement office has been using Google Earth and its growing stash of pictures to sniff out code violators.

They can take the Google pictures and compare them to pictures from the county's own aerial photography tool, Polaris, to document structural changes over the past year or so.

Read more: <http://www.charlotteobserver.com/2010/09/06/1672049/google-earth-spies-building-permit.html#ixzz0yppgqdNj>

## Nasca Lines may be map of underground water sources: Expert

Washington, Aug 30 2010

A new research has found that Nasca lines which are a series of ancient geoglyphs located in the Nazca Desert of Peru, may be a giant [map](#) of the underground water sources traced on the land, says expert.

The Nasca Lines are located in the Peruvian desert, about 200 miles south of Lima.

The assortment of perfectly straight lines lies in an area measuring 37 miles long and 1-mile wide.

<http://www.newkerala.com/news2/fullnews-31134.html>

## Scanning the Past

The logo for GEOInformatics features the word "GEO" in large, bold, red letters, followed by "Informatics" in a smaller, white, sans-serif font. The background of the logo is a dark, abstract image of a city or landscape with a grid-like pattern.

Knowledge for Surveying, Mapping & GIS Professionals

**Subscribe** to Geoinformatics Magazine for the special introduction price of € 62,50 (normal price € 89,-).

**Current Issue: Nr.5 / July/August / Volume 13**

30-07-2010

### Tracking Down the Middle Ages

The medieval church of San Giacomo in Maspiano, Italy, is to be restored. Until recently, no complete plans of the structure existed.

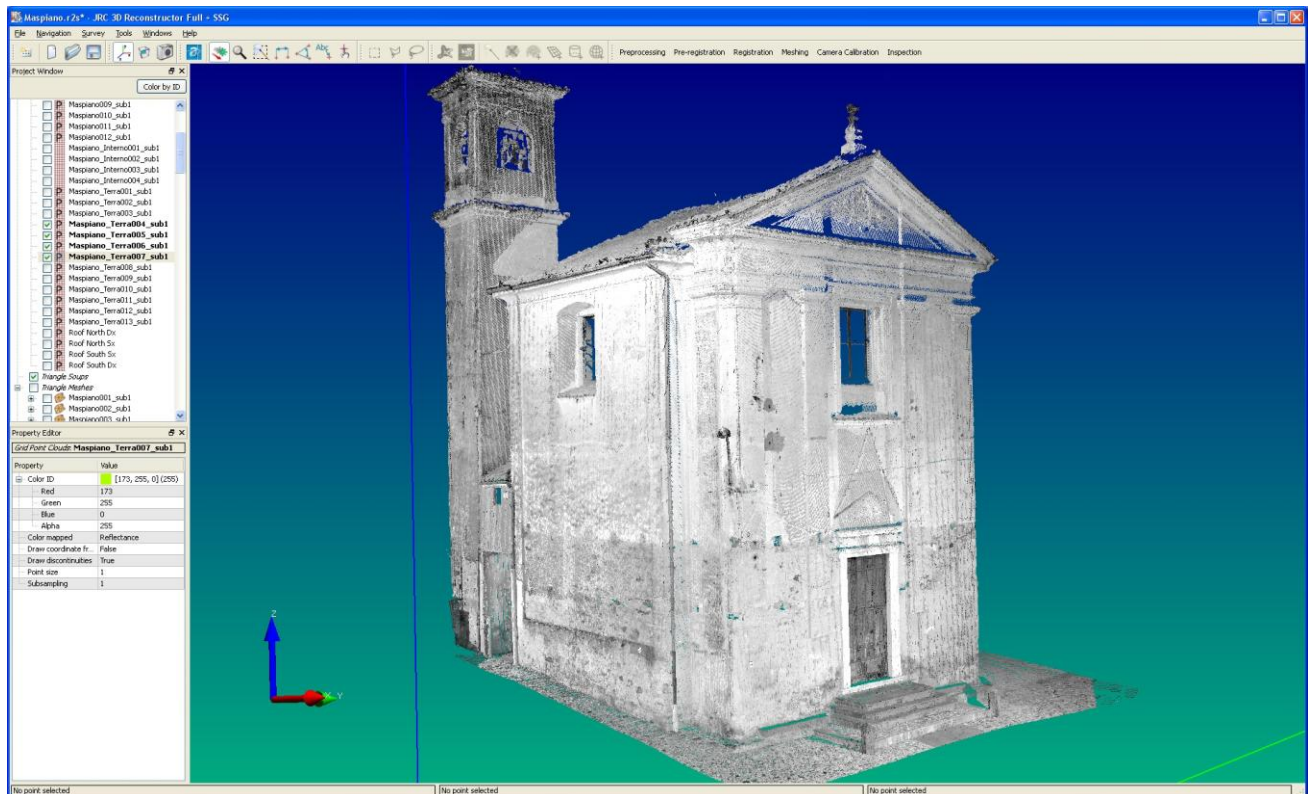


But accurate plans are absolutely essential, as restoration work on this 500-year-old structure requires skill and careful preparation. For the geomatics specialists at Gexcel, architectural surveying is familiar territory. The company was founded on the initiative of the faculty for structural engineering, architecture, space and environment. They were hired by the diocese of Brescia to conduct a geometric survey of the church, which dates back to the 16th century, on-site and as quickly as possible. High-quality procedures and products were of decisive importance: Gexcel used the new FARO Laser

Scanner Photon specifically for this task. It is an innovative device for measuring large objects from a distance of up to 76 meters.

### Serving the preservation of historical monuments

The restoration of San Giacomo church was divided into two phases. A topographical network was created first as the basis for geo-referenced scanning. Next the interior and exterior were scanned, and colour photographs taken with a high-resolution Nikon digital camera. All of this data was evaluated using FARO Scene software. Head of Laser Engineering Massimo Gelmini explains: "After the field phase, the scan data was processed, registered and geo-referenced. The camera was calibrated for a texture model and finally orthophotos and CAD illustrations of the church were prepared." The data was processed with Gexcel's Reconstructor software and AutoCAD.



<http://www.geoinformatics.com/blog/in-the-spotlight/tracking-down-the-middle-ages>

## Mapping out a new course

### Russian tanker conquers Arctic passage

Rowena Mason, London

September 4, 2010

The Age (Telegraph)

FOR 500 years, commodity traders have been trying to conquer the treacherous waters of the Russian Arctic passage - aware of its potential as a lucrative short-cut shipping route. The path is blocked all winter and only smaller cargo vessels manage to navigate through the icebergs for two to three months each summer.

But this week, the first commercial supertanker has traversed the strait. Carrying 70,000 tonnes of gas from Murmansk in Russia destined for Ningbo in China, the feat has moved the difficult Northern Sea Route a step closer to rivalling the dominant Suez Canal in the south.

#### FROM ICE TO OPEN WATER

How the Arctic ice sheet is projected to shrink



<http://environment.newscientist.com/data/images/archive/2535/25355901.jpg>

<http://www.theage.com.au/world/russian-tanker-conquers-arctic-passage-20100903-14ubk.html>

## Cartographic Resources

### Maps

By Matt Rosenberg, About.com Guide to Geography

The Internet is home to a vast collection of world maps, country maps, state maps, city maps, street maps, road maps, physical maps, political maps, and every type of map possible. This page provides resources for maps along with information to learn how to best use maps and map tools.

1. [World Maps](#)
2. [Country Maps](#)
3. [Road Maps](#)
4. [Blank and Outline Maps](#)
5. [Using Maps and Understanding Maps](#)
6. [GIS & GPS](#)
7. [More Maps: Historical, Topographic, U.S. Maps](#)

<http://geography.about.com/od/findmaps/u/maps.htm>

## Howstuffworks - Cartography

### How Maps Work: Cartography Conventions



- ▶ Images
- ▶ Videos

Cartography conventions help people make sense of a map immediately. Learn about cartography conventions and find out how cartography utilizes a... Turner explains, "[One convention] used in cartography on political maps, on most maps, [is] that the water is blue. It can throw people when you try...  
[Science](#) > [Geophysics](#)

### Introduction to How Maps Work

Maps are a convenient method of illustrating a wide variety of data. Learn about the different types of maps and find out how maps are created.

[Science](#) > [Geophysics](#)

### Top 10 Rare Books: 5. Ptolemy's 'Geographia'



- ▶ Images
- ▶ Videos

...Geographia," later renamed "Cosmographia." In it, he outlined his principles of geography and cartography, then provided extensive maps of the world as he...  
[Entertainment](#) > [Literature](#)

### How Maps Work: Online Maps

GIS, successfully creating a map requires a cartographer to have a lot of specialized knowledge. Many cartographers have degrees in cartography...

[Science](#) > [Geophysics](#)

### Map



- ▶ Images
- ▶ Videos

... or spherical models of the earth. The art and science of mapmaking is called cartography. A collection of maps in book form is an atlas. Maps show the earth...  
[Culture](#) > [Terms](#)

<http://science.howstuffworks.com/search.php?terms=cartography>

## OpenDragon geoinformatics software

The Global Software Institute is pleased to announce that the well-known OpenDragon geoinformatics software is now available for free download anywhere in the world. (In the past, OpenDragon was available only in a few countries.) During the next few months, OpenDragon will also fulfil the promise of its name and become open source.

As you probably already know, OpenDragon offers a full suite of image analysis and raster GIS capabilities including image enhancement, supervised and unsupervised classification, geometric correction, measurement and statistics, vector capture and display, slope, aspect and buffer calculations and multi-criterion decision making. OpenDragon also includes the OpenDragon Toolkit, which allows users who can program in C to extend the software functionality.

Schools, colleges and universities need robust, high quality software for geoinformatics teaching and research. Commercial software is frequently too expensive, especially for lesser developed countries, while 'home grown' software is frequently buggy or incomplete. OpenDragon fills the gap by providing a wide range of core geoinformatics functions in an integrated, easy-to-use package. The Toolkit is especially useful for faculty and graduate students who need to develop and evaluate their own algorithms.

OpenDragon(tm) is an offshoot of the commercial Dragon/ips(r) system from Goldin-Rudahl Systems, Inc. OpenDragon is fully internationalized. The current system provides Thai, Czech, French, Russian, Bahasa Indonesian and Brazilian Portuguese interfaces. We will gladly cooperate with anyone wishing to translate the software into other languages.

To download OpenDragon, or for more information, visit <http://www.open-dragon.org>

## First Atlas: Maps From Ortelius' Theatrum Orbis Terrarum

Aug. 26, 2010

Author: Marcel van den Broecke, Ph.D Category: Non-fiction: Illustrated/Art Description: The Theatrum atlas appeared in 1570, and published continuously until 1612 in seven languages and 31 editions, the first landmark in cartography. Dr. van den Broecke has translated text from the Latin and added fascinating commentary to the beautifully ornate maps. A remarkably beautiful book about the Renaissance world and the age of discovery. Rights available: North America Rights already sold: UK & Commonwealth, translation rights with

Compendium Publishing Other information: bound book, royalty inclusive prices available

Contact: William Corsa

Specialty Book Marketing, Inc.

[billbooky@aol.com](mailto:billbooky@aol.com)

phone: 212-696-0415

443 Park Avenue South, New York, NY 10016

Item number: 7222



## Free GIS Stuff

9/01/10 •

All of the costs involved to learn GIS, purchase hardware and software, and obtain data can be a bit disarming. Listed here are some completely free GIS related resources. Free GIS Posts Visit the Free GIS category on GIS Lounge for some of the most recent posts about free geospatial resources. ArcVoyager Special Edition A package designed expressly ... [read more](#)

<http://gislounge.com/>



## Interesting Links

Links to cartography and map sites. 620

<http://www.cartotalk.com/>



## Explorations:

[What do maps show?](#) - an USGS online learning unit

[Measurement - Scale](#) videos at Countdown. Tackle [A Proportional Fish Story](#)

[Compass Rose Google Earth Terra Server](#) find your home or school from space.

Watch [this topographic map](#) video @ Teacher Tube | [Place based storytelling](#) **WOW**

Take the [cartography quiz](#) **OR** Use the [National Atlas](#) to locate your town.

[Mapping out a new world order](#) CNN | [A Matter of Scale](#)

[Technology reveals new worlds to map](#) | [Mapping Renewable Energy, Rooftop by Rooftop](#) - Time, 12/22/08

Use the resources to make a specialized map using - [North American Environmental Atlas](#)

Map worksheet - [Estimate distance traveled on the underground railroad](#)

Use latitude and longitude figures to generate a [celestial map at Your Sky](#)

[Using Google Maps to Find a Home's Solar Potential](#) | [Green Maps Around the World](#)

[GPS Internet Hunt](#) **OR** [GIS Internet Hunt Eyes on the Sky, Feet on the Ground](#): offers a wealth of mapping activities

Check out [An Atlas of Cyberspaces](#). **OR** [Historic Maps in K-12 Classrooms](#) **OR** [USGS Geography](#)

[Geocaching](#) [British and Metric Conversions](#) **NEW!** | [Earth as Art](#) space images **NEW!**

[Corn Mazes](#) - USGS | [Googlelitrips.org](#) - literature and maps

<http://www.mrsoshouse.com/ext/cart.html>

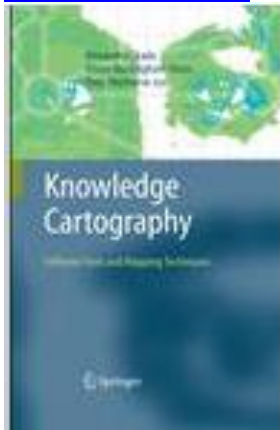
## Books

### Knowledge Cartography for Controversies: The Iraq Debate

[Knowledge Cartography](#)

[Advanced Information and Knowledge Processing](#), 2008, 249-265, DOI: 10.1007/978-1-84800-149-7\_12

[Simon Buckingham Shum](#) and [Alexandra Okada](#)



#### **Abstract**

In analyzing controversies and debates – which would include reviewing a literature in order to plan research, or assessing intelligence to formulate policy – there is no one worldview which can be mapped, for instance as a single, coherent concept map. The cartographic challenge is to show which facts are agreed and contested, and the different kinds of narrative links that use facts as evidence to define the nature of the problem, what to do about it, and why. We will use the debate around the invasion of Iraq to demonstrate the methodology of using a knowledge mapping tool to extract key ideas from source materials, in order to classify and connect them within and across a set of perspectives of interest to the analyst. We reflect on the value that this approach adds, and how it relates to other argument mapping approaches.

<http://www.springerlink.com/content/u6401608u58j64w7/>



## The New Cartographers: Kity Harmon's new book explores The Map as Art

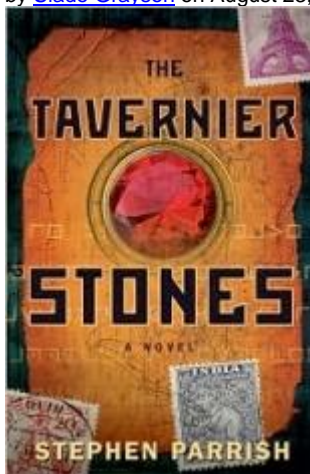


Read more:

<http://www.nationalpost.com/arts/Cartographers+Kity+Harmon+book+explores/2179919/story.html#ixzz0zgljvLN>

### **The Tavernier Stones**

by [Slade Grayson](#) on August 23, 2010



I have to admit, the idea of a mystery based on equal parts cartography and gemology seemed as interesting to me as listening to a systems analyst describe what he/she did at work today. But somehow, first-time author Stephen Parrish lines [THE TAVERNIER STONES](#) with interesting tidbits from both professions, just enough to inform the reader about a specific plot point. Then he gets back to the action before the reader's eyes glaze over.

<http://www.bookgasm.com/reviews/thrillers/the-tavernier-stones/comment-page-1/#comment-79814>

## Technical Issues

### 3D Lenticular Printing Interlacing Algorithm Illustrated Using Photoshop

by  
Isaac Cheung  
Co-founder of ViCGI.com

#### **Introduction**

3D Lenticular printing has become more affordable because of the ever lowering prices of digital printing equipment found in homes and offices. There are many downloadable lenticular printing software products on the market; some free and some for a medium to high price. By and large these products serve one main purpose; i.e. to interlace pictures to be viewed through lenticular sheets.

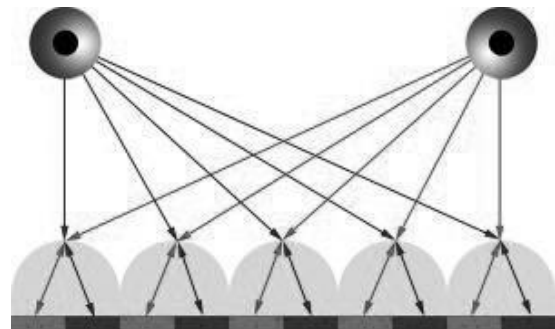
This article tries to demystify the underlying working of interlacing software. By understanding how pictures are interlaced and then combined, you will be able to appreciate the principles of lenticular printing better. This knowledge will also help you identify with the terminology used in many other lenticular software products.

Since CS4 Adobe Photoshop Extended has had 3D features built-in. The information presented here is not intended to replace any interlacing software product. However, we believe knowing why is just as important as knowing how. Through a real example, we will go through the steps in interlacing a lenticular print without an ad hoc program so you will also understand the "why" aspect of the task.

#### **Principle of 3D Lenticular Printing**

A brief review here will help lay the foundation for further discussion.

<http://www.vicgi.com/lenticular-interlacing-algorithm.html>



### Three-Dimensional Interaction with Autostereoscopic Displays

Zahir Y. Alpaslan and Alexander A. Sawchuk<sup>2</sup>  
Integrated Media Systems Center, University of Southern California, Mail Code 2564  
Los Angeles, CA 90089-2564.

Z.Y. Alpaslan and A.A. Sawchuk, "Three-Dimensional Interaction with Autostereoscopic Displays," Proc. Stereoscopic Displays and Virtual Reality Systems XI Symposium, Proc. SPIE, Vol. 5291, San Jose, CA, 2004.

#### **ABSTRACT**

We describe new techniques for interactive input and manipulation of three-dimensional data using a motion tracking system combined with an autostereoscopic display. Users interact with the system by means of video cameras that track a light source or a user's hand motions in space. We process this 3D tracking data with OpenGL to create or manipulate objects in virtual space. We then synthesize two to nine images as seen by virtual cameras observing the objects and interlace them to drive the autostereoscopic display. The light source is tracked within a separate interaction space, so that users interact with images appearing both inside and outside the display. With some displays that use nine images inside a viewing zone (such as the SG 202 autostereoscopic display from StereoGraphics), user head tracking is not necessary because there is a built-in left right look-around capability. With such multi-view autostereoscopic displays, more than one user can see the interaction at the same time and more than one person can interact with the display.

Keywords: Autostereoscopic displays, interactive displays, video tracking, 3-D display, stereo display.

[http://www.zahirpalpaslan.com/research/3DIASD\\_ZYAlpaslan\\_web.pdf](http://www.zahirpalpaslan.com/research/3DIASD_ZYAlpaslan_web.pdf)

## **Geospatial Software offers 3D capabilities.**

September 8, 2010

ThomasNet News

### **Original Press Release**

Integrating spatial analysis and data capture with 3D virtual earth style of presentation, GeoMedia® 3D delivers precise visualization of surface and environmental characteristics. Users can navigate with full freedom of movement in all dimensions to evaluate geospatial assets and analytical results. Users can also dynamically integrate surfaces, imagery, feature data, and vector data to create 3D view of all data sources in GeoMedia 3D map window for rapid assessment of fast-changing conditions.

## **Intergraph® Introduces 3D Capabilities in Geospatial Software**

GeoMedia® 3D to enhance productivity and increase situational awareness for faster, more informed decision making

HUNTSVILLE, Ala., -- Intergraph® has introduced new 3D capabilities for its GeoMedia® product line, fully integrating advanced spatial analysis and data capture with the 3D 'virtual earth' style of presentation popular in today's mainstream mapping applications. The combination delivers more precise visualization of surface and environmental characteristics for increased insight, data accuracy and user productivity.

<http://news.thomasnet.com/fullstory/Geospatial-Software-offers-3D-capabilities-583271>

## **Esri Releases the Open GeoServices REST Specification**

Source: Environmental Systems Research Institute Inc. Esri Releases the Open GeoServices REST Specification Software Makes Server-Side Resources Instantly Available to Thousands of Developers  
REDLANDS, Calif., Sept. 8, 2010 (GLOBE NEWSWIRE) –

At the FOSS4G Conference in Barcelona, Spain today, Esri announced the release of the GeoServices REST Specification. This open specification provides a standard way for Web clients to communicate with geographic information system (GIS) servers through Representational State Transfer (REST) technology. The specification has been opened such that developers can expose the GeoServices API request structure from the ArcGIS Server and other non-Esri, back-end GIS servers or processors.

"In many ways, by releasing the GeoServices REST Specification as open technology, Esri is repeating what it did in the early '90s, releasing shapefiles as an open data format," explains Dr. Satish Sankaran, Esri product manager for interoperability and standards. "This specification encapsulates a strong platform that allows developers to create services that support rich GIS Web applications and allows geospatial services to be embedded into anything on the Web, including commercial off-the-shelf products, open source, and even mashups. The GeoServices REST Specification helps make all GIS data more open and interoperable on the Web."

The GeoServices REST Specification for a server implementation is a proven specification that has been widely deployed and exercised in the field and exposes server-side resources to a broad range of clients and applications. The JSON-based, REST-full specification makes the server instantly usable by thousands of developers working in popular client-side development environments with the ArcGIS Web mapping APIs for JavaScript, Flex, Silverlight, iOS, and Android, all of which are powered by the GeoServices REST Specification.

To download the GeoServices REST Specification, visit [www.esri.com/opengeoservices](http://www.esri.com/opengeoservices).

<http://www.stockmarketsreview.com/news/36856/>

## Data Mash-Ups and the Future of Mapping

JISC has released [Data Mash-Ups and the Future of Mapping](#).

Here's an excerpt:

The term 'mash-up' refers to websites that weave data from different sources into new Web services. The key to a successful Web service is to gather and use large datasets and harness the scale of the Internet through what is known as network effects. This means that data sources are just as important as the software that 'mashes' them, and one of the most profound pieces of data that a user has at any one time is his or her location. . . .

Since, as this report makes clear, data mash-ups that make use of geospatial data in some form or other are by far the most common mash-ups to date, t

<http://digital-scholarship.com/digitalkoans/2010/09/07/data-mash-ups-and-the-future-of-mapping/>

## eSpatial's iSMART GIS supports access to the OS OnDemand services provided by Ordnance Survey of Great Britain.

### GISCCAFÉ

OS OnDemand is a new online service that delivers world-class Ordnance Survey mapping over the Web directly to your organisation

**6th September 2010, Dublin, Ireland:** eSpatial, a leading provider of Web GIS, and Location Information solutions today announced that its market leading GIS product, iSMART supports access to the OS OnDemand services provided by Ordnance Survey of Great Britain.

OS OnDemand delivers world-class Ordnance Survey mapping over the Web directly to your organisation – when you want it, where you want it, quickly. This web map service (WMS) offers Ordnance Survey licensed customers the most up-to-date mapping of all of Great Britain at a range of scales, including a raster view of OS MasterMap® Topography Layer, making it ideal for a huge variety of applications. OS OnDemand is based on open standards, eliminating specialist requirements, and therefore enabling all Open Geospatial Consortium (OGC®) compliant web applications to consume OS OnDemand.

<http://www10.giscafe.com/nbc/articles/1/860190/eSpatial%C3%A2%E2%82%AC%E2%84%A2s-iSMART-GIS-supports-access-OnDemand-services-provided-by-Ordnance-Survey-Great-Britain>

## Hand Drawn Maps

### Alejo Malia's 3D 'Googles World' Drawings are Virtually Foreign

Illustrated Online Cartography

Artist Alejo Malia has sketched 'Googles World' in three dimensions as if the online universal mapping application's pinpoints were to exist in real life.

The familiar images of New York City appear in a precise hand-drawn manner of 'Googles World,' complete with [icons](#) signifying desired destinations of parks and subways. An information bubble even appears looming over Times Square, undoubtedly communicating the address and a short description of the site to an inquiring humanoid looking in from above.

<http://www.trendhunter.com/trends/googles-world>

### At 90, city's leading artist recognized in Somerville

On September 8, 2010, in [Latest News](#), by The News Staff

By Andrew Firestone

Fred Lund knows Somerville as well as anyone. The oldest and longest serving city employee travels down every Somerville street in his work as the city cartographer and draftsman, designing maps of the city by hand.

In a city of aspiring artists, the artistry of Lund, 90, is hidden in plain sight.

Opening a show of his art Tuesday at the Armory, it's clear that wizened craftsman has given the city a stroke worth seeing for all these years. Responsible for much of the art in

Somerville stores, city pamphlets and fliers for public events, Lund's maps still serve as base map for all projects in Somerville including the MBTA project and the Assembly Square development.

"Most of this is self-taught," he said, looking back at the evolution of his form.

<http://www.thesomervilleneews.com/archives/6821>

## GPS? Mapquest? Not for fans of hand-drawn maps

Reuters September 14, 2010



Hundreds of hand drawn maps are featured on the website of the Hand Drawn Map Association ([www.handmaps.org](http://www.handmaps.org)), and in a new book, "From Here to There: A Curious Collection from the Hand Drawn Map Association."

Photograph by: Choo Youn-Kong, Getty Images

As high-tech mapping services such as Garmin, Google and MapQuest make finding directions easier than ever, a new movement has revived interest in maps made by hand, as a route toward personal expression.

<http://www.canada.com/technology/Mapquest+fans+hand+drawn+maps/3522935/story.html>

## Forget GPS: Hand-drawn maps still have allure

Documents tell a story about a place — and the people who draw them

Advertisement



Reuters

An image entitled "9/11" by John Hutchison of New York from the book "Here to There: A Curious Collection from the Hand Drawn Map Association," compiled by Kris Harzinski, documented his route home from Manhattan to Brooklyn on Sept. 11, 2001, and wrote out the thoughts he had while watching the World Trade Center towers burn.

[http://www.msnbc.msn.com/id/39174555/ns/travel-travel\\_tips/](http://www.msnbc.msn.com/id/39174555/ns/travel-travel_tips/)

## Global Positioning System? Mapquest? Not for Fans of Hand-Drawn Maps



An image entitled "Empatheia" by Shane Watt from the upcoming book "Here to There: A Curious Collection from the Hand Drawn Map Association," compiled by Kris Harzinski released September 13, 2010. Watt's map was drawn as a "mashup" of global cities, including Washington DC, London, Los Angeles, Tehran, Kabul and Beijing. It is intended to depict a "military industrial city of the future." As high-tech mapping services such as Garmin, Google and MapQuest make finding directions easier than ever, a new movement has revived interest in maps made by hand, as a route toward personal expression. To match Reuters Life! ART-MAPS/ REUTERS/Here to There: A Curious Collection from the Hand Drawn Map Association/Shane Watt.

By: Randall Mikkelsen

**BOSTON (REUTERS).**- As high-tech mapping services such as Garmin, Google and MapQuest make finding directions easier than ever, a new movement has revived interest in maps made by hand, as a route toward personal expression.

[http://www.ardaily.com/index.asp?int\\_new=40806&int\\_sec=2](http://www.ardaily.com/index.asp?int_new=40806&int_sec=2)

## For fans of hand-drawn maps

Destination: New York

By Randall Mikkelsen, Reuters Life!

As high-tech mapping services such as Garmin, Google and MapQuest make finding directions easier than ever, a new movement has revived interest in maps made by hand, as a route toward personal expression.

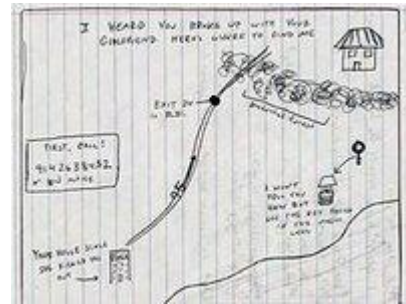
Ingrid Burrington plotted encounters between strangers in New York City that were noted on the "missed connections" personals section of Craigslist, a website for classified listings.

Marilyn Murphy mapped the sites of her stomach injections to treat juvenile arthritis - a practical guide for her next shot as well as a testament to her illness.

Scott Schuldt used methods and instruments of old surveyors to chart his rambles in the Pacific Northwest of the United States, and plots them in the folksy, primitive scale of strides to the inch.

These maps and hundreds of others are featured on the website of the Hand Drawn Map Association ([www.handmaps.org](http://www.handmaps.org)), and in a new book, "From Here to There: A Curious Collection from the Hand Drawn Map Association."

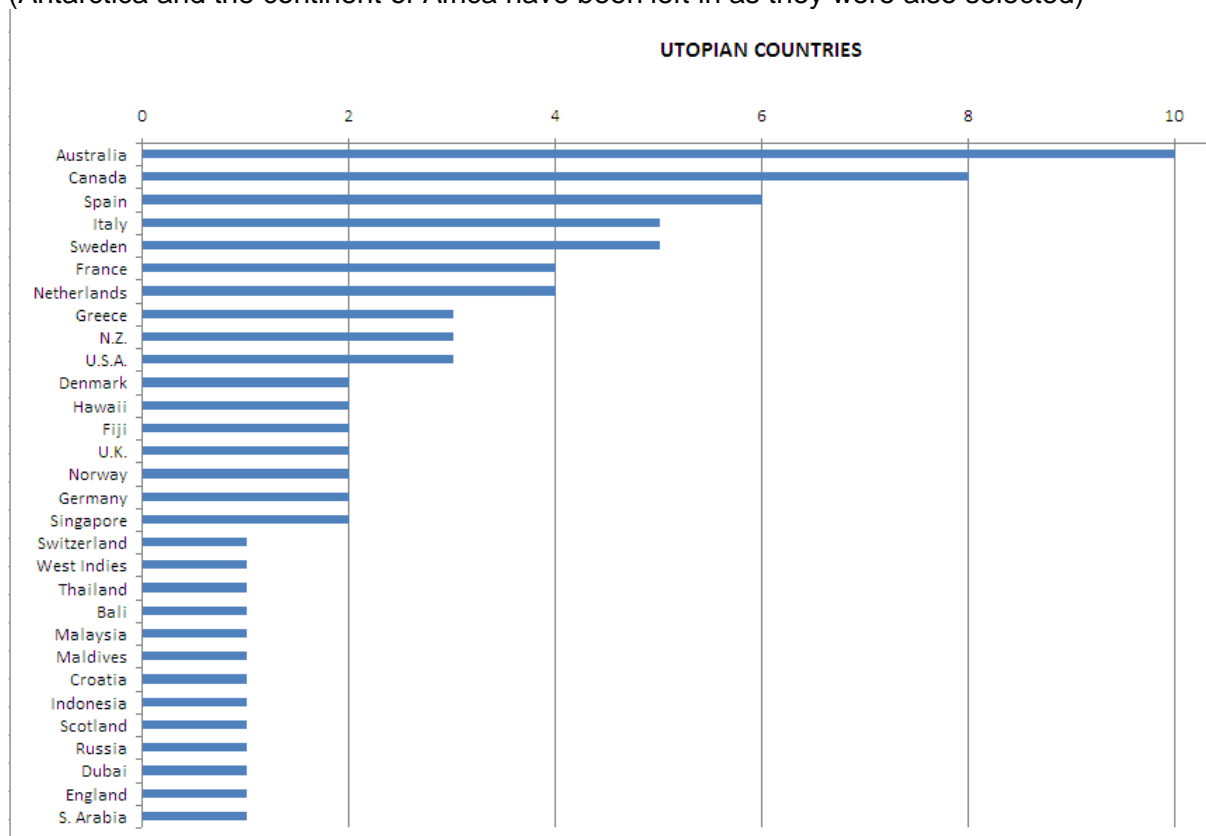
<http://www.canoe.ca/Travel/TipsTrends/Trends/2010/09/14/15342301-reuters.html?cid=rsstravelfeatures>



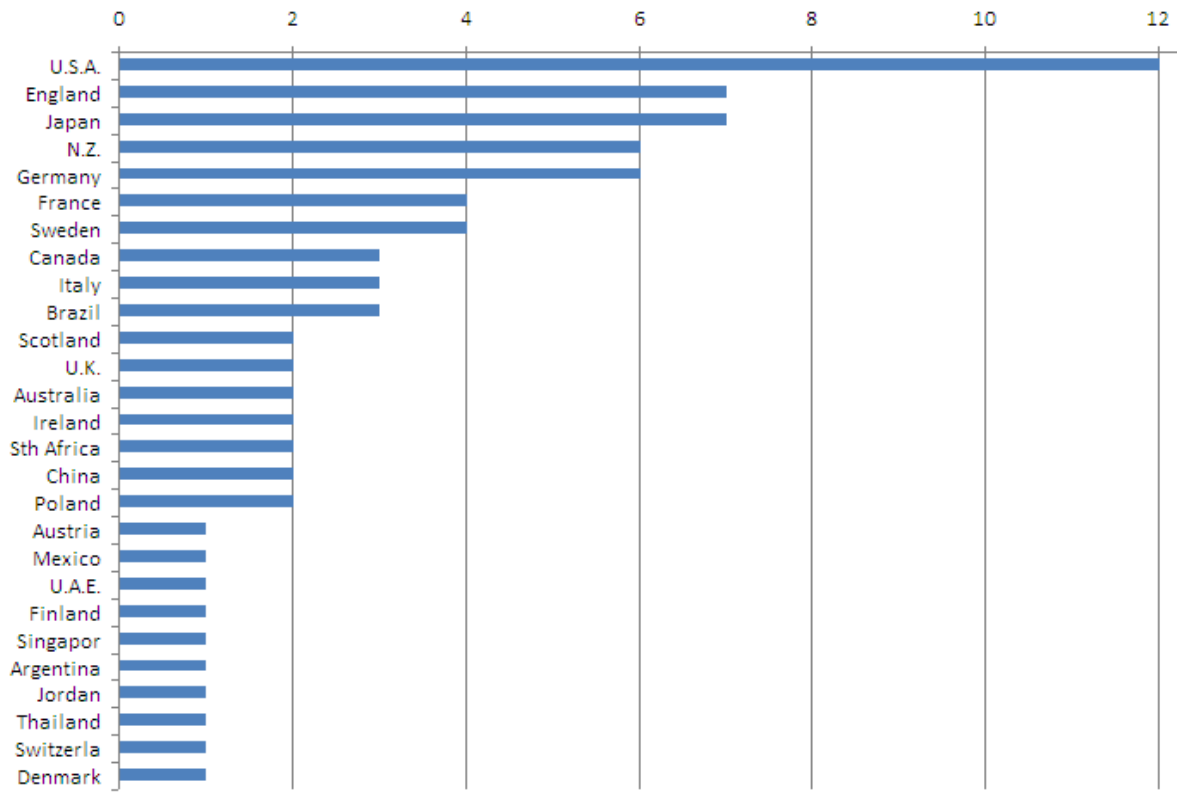
Lola Pellegrino drew this map for an ex-boyfriend to let him know she was still around after he broke up with his latest girlfriend. (REUTERS/Lola Pellegrino/Handout)

## Where to live

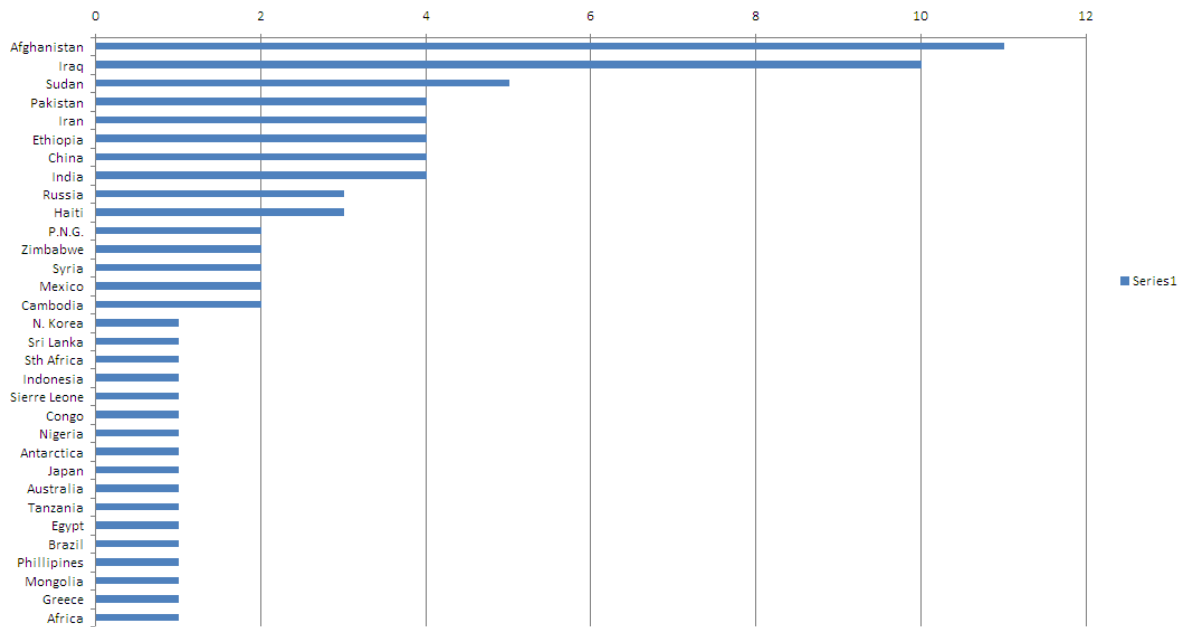
I gave my 32 undergraduate students in the subject Environmental Sustainability the task of identifying five countries in each category of "utopian", "acceptable" and "disastrous" in terms of place to live. The charts below show the places that they selected for each category. (Antarctica and the continent of Africa have been left in as they were also selected)



### ACCEPTABLE COUNTRIES



### DISASTROUS COUNTRIES





## Odd Spot

### Nike releases new Nike+ GPS app for runners

By David Chartier, Macworld

September 07, 2010 11:50 AM ET

Nike has released [Nike+ GPS](#), a new app for runners, in the App Store. As the name promises, this new app's main advantage is live GPS tracking while you run. It can track your route and upload it--along with the rest of your run data--to [Nikeplus.com](#), Nike's Web service and community for gadget-enabled runners.

Nike+ GPS also includes a Challenge Me feature that's designed to help ambitious runners push themselves. If you run three miles, Challenge Me will push you to run 3.5. Run five miles, and Nike's app will move the carrot just a little farther.

[Splunk and MapReduce: Download now](#)

There are a few likely reasons for why Nike decided to release a separate Nike+ app when it already got Apple to build one into iOS. For one, this new app does not require the purchase of a [Nike + iPod Sport Kit](#)--it relies solely on device hardware like the GPS and accelerometer. As a result, iPhone and iPod touch users now only need to consider purchasing a \$2 app versus a \$30 kit (iPod nano owners, however, will still need the kit).

<http://www.networkworld.com/news/2010/090710-nike-releases-new-nike-gps.html?hpg1=bn>

### Deep-sea Images Reveal Colorful Life off Indonesia

Robin McDowell, Associated Press Writer  
Scientific Computing

Scientists using cutting-edge technology to explore waters off Indonesia were wowed by colorful and diverse images of marine life on the ocean floor — including plate-sized sea spiders and flower-like sponges that appear to be carnivorous. They predict that as many as 40 new plant and animal species may have been discovered during the three-week expedition that ended August 14, 2010.

More than 100 hours of video and 100,000 photographs, captured using a robotic vehicle with high-definition cameras, were piped to shore in real-time by satellite and high-speed Internet. Verena Tunnicliffe, a professor at the University of Victoria in Canada, said the images provided an extraordinary glimpse into one of the globe's most complex and little-known marine ecosystems.



Some of the many interesting images collected by the Little Hercules ROV during the INDEX 2010 Exploration of the Sangihe Talaud Region off Indonesia. (AP Photo/NOAA Okeanos Explorer Program)

<http://www.scimag.com/news-DS-Deep-sea-Images-Reveal-Colorful-Life-off-Indonesia-082610.aspx>

**“Back in my day, we .....**”

**Recruiting for the Women's Army Corps, cartographer in the Army Ground Forces.**

"The Army of the United States has 239 kinds of jobs for women."

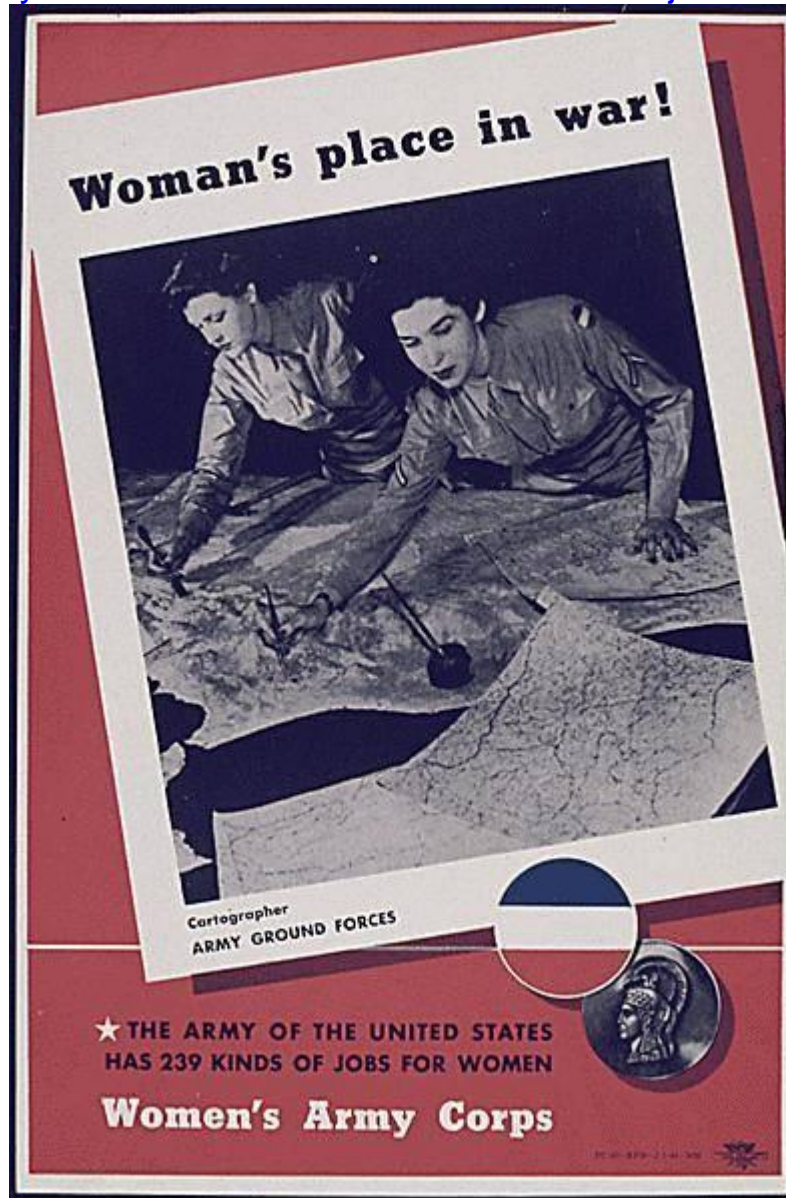


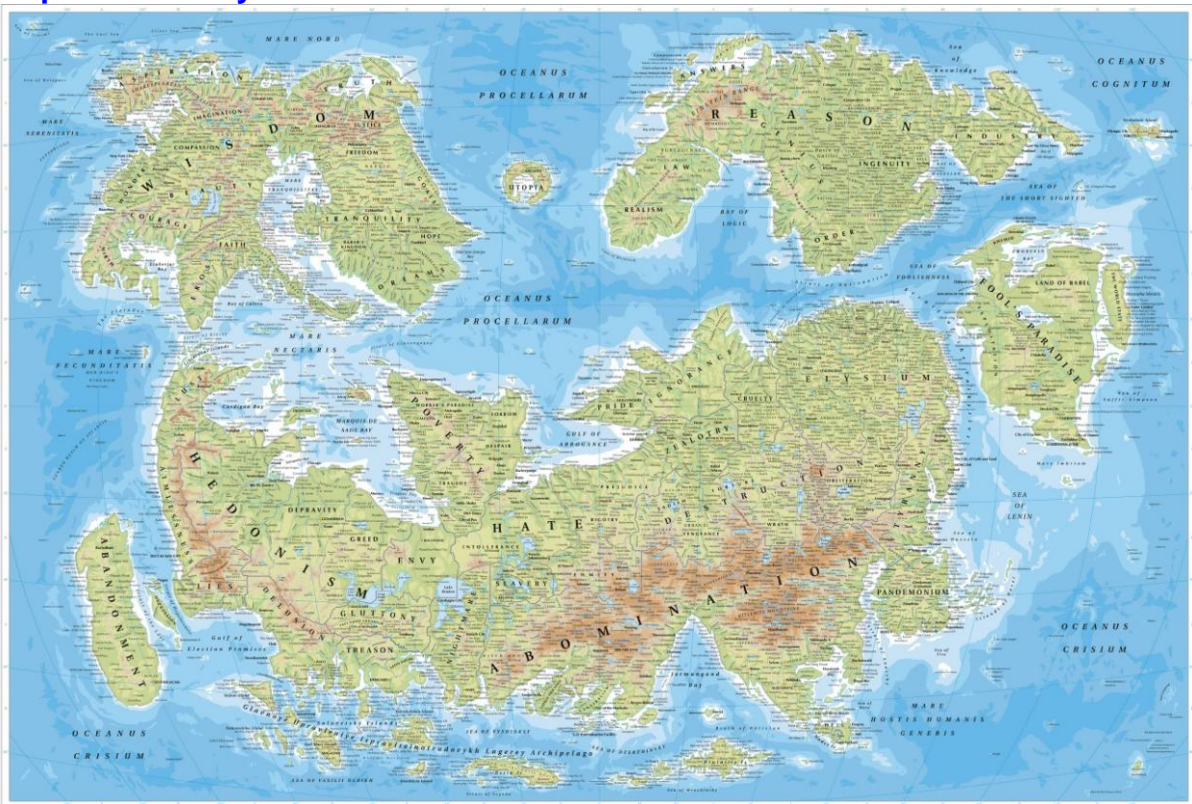
Image courtesy of National Archives and Records Administration.  
Created by Office of Government Reports, U.S. Information Service, Division of Public Inquiry, Bureau of Special Services,  
OWI.

Modifications © Jone Lewis 2001.

[http://womenshistory.about.com/library/pic/bl\\_p\\_wwii\\_place\\_cart.htm](http://womenshistory.about.com/library/pic/bl_p_wwii_place_cart.htm)

## Feature Map

### Map of Humanity



[http://www.documaga.com/wp-content/uploads/2010/07/map\\_of\\_humanity.jpg](http://www.documaga.com/wp-content/uploads/2010/07/map_of_humanity.jpg)

## A Map to Wine About

### Italian wine map

August 30th, 2010 12:57 pm CT



Sample of the map

Photo: DeLong Company

The De Long Co., specialty cartographers, has just released another in their collection of wine maps, this one representing Italy. It's a pretty package: 24" by 36" in size printed on fairly heavy paper stock with enough color to make you think you've ingested funny mushrooms. You can see a large as well as a more detailed version at their website: <http://www.delongwine.com>.

<http://www.examiner.com/wine-in-chicago/italian-wine-map>

## Off-Centre Mapping

### Putting Rap on the Map. Literally.

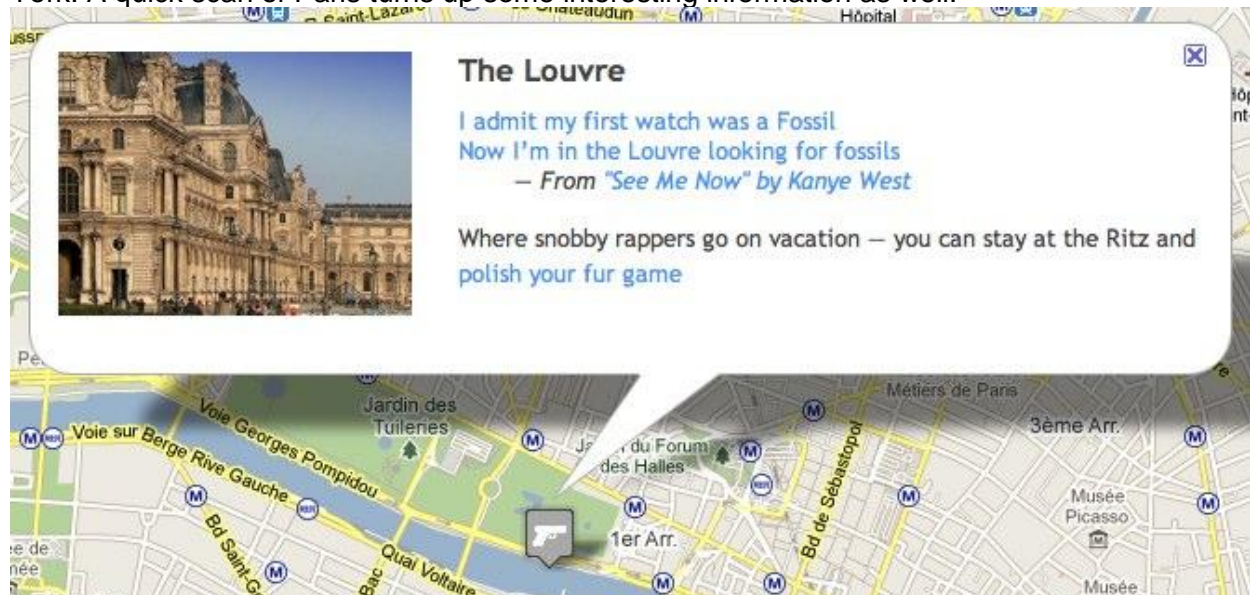
Alex Stone, August 31st, 2010



Rap enthusiasm site, [Rap Genius](#) has gone through the impressive tasks of combing rap and Google Maps. Rap Genius' [Rap Map](#) is a Google Map-based visual almanac of all things rap. You can scan an area and view rap landmarks and places mentioned or referenced in some famous rap lyrics.



The Rap Map doesn't just cover major cities and famous rap locations like Atlanta and New York. A quick scan of Paris turns up some interesting information as well.



This is definitely one of the more entertaining Google Maps mashups. You get kind of caught up in it like you would with Wikipedia (admit it, you never stop at just looking up a movie). It's currently uncertain if Rap Genius plans to expand on Rap Map, adding more features and more information. I would certainly be interested to be able to sort by artist or area or maybe have it jump around, randomly, presenting me with rap trivia. As strange as it may sound, there's lots of room here for this to get more interesting over time.

Now where's the equivalent for other genres? Maybe [Pitchfork](#) could roll one out for rock? And for as many stories as there are in country music, [CMT](#) would have plenty to include in its own twangified version of the rap map.

<http://blog.programmableweb.com/2010/08/31/putting-rap-on-the-map-literally/>

## Arcade Fire Video Uses Google Maps to Bring You Home

*Justin Houk, September 6th, 2010*

Indie rock band Arcade Fire used HTML5 and the Google Maps API in its latest video to transport us to the neighborhood we grew up in. Director Chris Milk worked with the Google Chrome team to blend music, art, and place into an interactive experience called [The Wilderness Downtown](#). The video mashup takes us into the memories of our youth through Street View and 3D rendered map tiles.



<http://www.thewildernessdowntown.com/>

## Conferences

### INTERGEO 2010

5 to 7 October 2010

The (geo) world will come together in Cologne.

Around 475 companies from 30 countries will again open up new horizons at the world's leading fair for geodesy, geoinformation and land management. Today, 80 per cent of last year's exhibitors have already booked their trade fair participation

<http://aktuell.kundeninformation.net/re?l=6mg15ol1u9khtcl1&req=anr%3D>

### ENVIROINFO 24, 2010

Wednesday Oct. 6                      EnviroInfo/INTERGEO Cologne

Thursday/Friday Oct. 7-8              Enviroinfo Bonn

ENVIROINFO is a series of international and interdisciplinary conferences and a meeting place for experts and practitioners on leading environmental ICT technologies to make the world a better place for living.

Homepage ENVIROINFO 24

<http://www.enviroinfo2010.org/>

On Wednesday October 6th in Cologne as a Special Track of the INTERGEO 2010 Conference on Geodesy, Geoinformation and Land management.

<http://www.enviroinfo2010.org/cms/?q=node/82>

On Thursday October 7th and Friday 8th at Bonn University

[http://www.enviroinfo2010.org/cms/?q=node/83#t\\_C\\_1](http://www.enviroinfo2010.org/cms/?q=node/83#t_C_1)

Registration

<http://www.enviroinfo2010.org/cms/?q=RegAndSub>

The Enviroinfo2010 Ticket includes a 1 Day Ticket for Intergeo2010 Conference and Trade Fair. INTERGEO is the world's largest event and communication platform for geodesy, geoinformation and land management.

### **3rd International Symposium of the ICA Commission on the History of Cartography**

10-13 October 2010

University of Texas in Arlington, USA

The Symposium will be held in conjunction with the 7th Biennial Virginia Garrett Lectures on the History of Cartography (Friday, 8 October 2010) and the Fall Meeting of the Texas Map Society (Saturday, 9 October 2010);

[www.ichistcarto.org](http://www.ichistcarto.org)

### **3<sup>rd</sup> International Conference on Geoinformation technology**

19-20, October, 2010

For Natural Disaster Management and Rehabilitation

The Empress Hotel, Chiang Mai, Thailand

<http://e-geoinfo.net/git4ndm2010/>

### **ICA Commission on National and Regional Atlases**

October 20-23, 2010

Yogyakarta, Indonesia,.

(1) Recent Directions in National Atlas Cartography  
and

(2) National, Regional, City and School Atlases  
as Expressions and Carriers of Space-related Identity

Organized by ICA Commission on National and Regional Atlases

National Coordinating Agency for Survey and Mapping, Indonesia

### **32<sup>nd</sup> Nigerian Cartographic Conference**

1st to 5th November 2011 in Kaduna (Nigeria).

A call for papers is issued with a deadline of 15th September 2010. During the event, there will be an exhibition of maps and drawings and poster presentation. Individual researchers, students, companies and organisations who aim to contribute are requested to give notice by 15th September 2010.

[http://www.gim-international.com/news/id4954-Nigerian\\_Cartographic\\_Conference.html](http://www.gim-international.com/news/id4954-Nigerian_Cartographic_Conference.html)

### **International Geographic Union**

14-18 November, 2011

Regional Geographic Conference

IGU 2011

United and Integrated with the World

[www.ugi2011.cl](http://www.ugi2011.cl)

### **AutoCarto 2010**

November 15-18, 2010

Orlando, Florida

Sponsored by the Cartography and Geographic Information Society (CaGIS), The 18<sup>th</sup> in the series, this international research symposium on computer-based cartography and GIScience will be held in conjunction with the American Society for Photogrammetry and Remote Sensing (ASPRS). The International Cartographic Association and the International

Society for Photogrammetry and Remote Sensing (ISPRS) Technical Commission IV: Geodatabases and Digital Mapping will also hold a number of commission meetings at AutoCarto 2010.

The focus of this joint meeting is **Geospatial Data and Geovisualization for the Environments, Security, and Society**.

<http://www.cartogis.org/autocarto>

### **The Use of GIS and Remote Sensing for Sustainable Development**

29<sup>th</sup> Nov-03<sup>rd</sup> Dec, 2010

Tunis

We have the honour to invite you to participate in the events of **GEOTUNIS International Congress 2010** in its 5th Edition from 29 November to 03 December, **2010 in Tunisia** Centred under the theme "**The use of GIS and remote sensing for sustainable development**". A fifth **GeoTunis session** in front of distinguished scientific users of GIS and remote sensing for the most recent experiments and applications in scientific fields.

The congress will include 4 major scientific themes that address the various uses and applications of geographic information systems as well as numerous practical workshops supervised by the major international institutions active in the field.

**Go to link:>**

[www.geotunis.org](http://www.geotunis.org)

### **Defence Geospatial Intelligence (DGI) 2011**

24 - 27 January, 2011

QEII Centre London

#### ***The 7th Annual Geoint Conference & Exhibition***

Defence Geospatial Intelligence (DGI) is Europe's largest annual gathering dedicated to high-level discussion addressing the major challenges of the defence and government geospatial intelligence community.

### **MSIA 2011 Conference**

A celebration of 100 years of national topographic mapping 1910-2010

Monday 28<sup>th</sup> and Tuesday 29<sup>th</sup> March

University House, Australian National University, Canberra.

The conference program will comprise papers and activities that will tell the story of 100 years of national topographic mapping.

Registration details will be available towards the end of the year. Any inquiries can be directed to the Trevor Menzies, MSIA Heritage Program Manager and Conference Convener at [trevor.menzies@hotmail.com](mailto:trevor.menzies@hotmail.com) or telephone (08) 8981 3413.

### **ISPRS Joint Workshop on 3D City Modelling & Applications**

First call for papers and Announcement-ISPRS Joint Workshop on 3D City Modelling & Applications which will be held on 26-27 June, 2011 in Wuhan University, P.R. China.

In case of questions, please contact : [3dcma@lmars.whu.edu.cn](mailto:3dcma@lmars.whu.edu.cn)

For more information please consult the workshop website:

[www.lmars.whu.edu.cn/3DCMA2011.html](http://www.lmars.whu.edu.cn/3DCMA2011.html)

### **25th International Cartographic Conference**

3-11 July 2011

Paris, France

Open to researchers, engineers, students, data producers and software suppliers, the ICC 2011 will be held from 4th to 8th July 2011 at the Palais des Congrès in Paris, with simultaneous proceedings in eight meeting rooms. This conference will consider the most

wide-ranging issues involving cartography and geomatics. In addition to oral presentations, sessions will be organized for the presentation of work in the form of poster displays.

**Go to link >**

<http://www.icc2011.fr/>

MODSIM 2011, International Congress on Modelling and Simulation,  
12-16 December,  
Perth, Australia,  
[mssanz.org.au/modsim2011](http://mssanz.org.au/modsim2011)

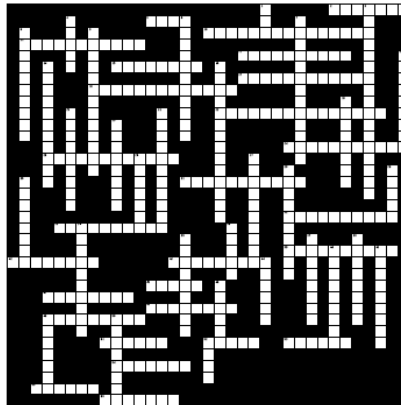
*NOTE: If you are involved in a workshop, symposium or conference related to cartography please send me brief details for the newsletter.*

---

---

## Cartography Crossword

Cartography Terms Crossword by Dr. Thomas Thompson



If you would enjoy the challenge of questions like those shown below then go to the website and attempt the crossword.

Across

- 2 Group of natural processes including weathering, dissolution, abrasion, corrosion, and transportation that remove material from any part of the Earth's surface.
- 5 Network of uniformly spaced parallel lines intersecting at right angles. When superimposed on a map, it usually carries the name of the projection used for the map- that is, Lambert grid, transverse Mercator grid, universal transverse Mercator grid.
- 10 Photomechanical device used in conjunction with a double-projection stereoplotter for producing orthophotograph.
- 11 Science that deals with the measurement and description of the physical features of the oceans, seas, lakes, rivers, and their adjoining coastal areas, with particular reference to their use for navigation.
- 12 Configuration (relief) of the land surface; the graphic delineation or portrayal of that configuration in map form, as by contour lines; in oceanography the term is applied to a surface such as the sea bottom or surface of given characteristics within the water mass.
- 15 Unit of survey of the public lands of the United States, normally a quadrangle approximately 6 miles on a side with boundaries conforming to meridians and parallels within established limits, containing 36 sections. Also, in minor governmental subdivision.
- 17 Pertaining to the use of binocular vision for observation of a pair of overlapping photographs or other perspective views, giving impression of depth.
- 18 Method of extending horizontal position on the surface of the Earth by measuring the angles of triangles and the included sides of selected triangles.

<http://www.armoredpenguin.com/crossword/Data/best/geography/cartography.terms.01.html>