

International Cartographic Association  
Association Cartographique Internationale



Commission on Education and Training

## May 2010 Newsletter

An occasional electronic newsletter for members of the Commission.

If you have any brief items of interest to fellow CET members then please email them to [david.fraser@rmit.edu.au](mailto:david.fraser@rmit.edu.au) for eCET.

If you have more substantial articles please send them to Igor Drecki at [i.drecki@auckland.ac.nz](mailto:i.drecki@auckland.ac.nz) for the ICA newsletter.

---

*“Physics, geosciences, space sciences, environment and mathematics have been rated Australia’s strongest performing fields, according to the global impact of their scientific publications” .Australian Innovation System Report 2010 – reported The Australian, May, 2010.*

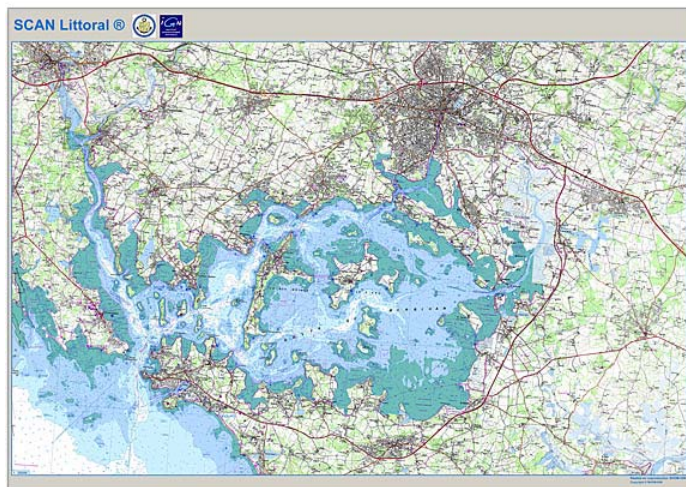
### Map of the Month

#### ICA - MAP OF THE MONTH 05/2010: SCAN LITTORAL

The ICA is happy to feature the fourth Map of the Month: “**SCAN Littoral® chart of the golfe du Morbihan (Brittany)**”

At the 24th International Cartography Conference in Santiago, Chile, the chart won the second jury’s prize in the category “**Hydrography or maritime navigational charts**”. The jury stated:

*Innovative continuous representation of hydrography and topography, as demonstrated in a*



*spectacular part of the French coast.*

## Education Conference

### ESRI's Education User Conference Puts Critical Thinking on the Map

Written by ESRI  
17 May 2010

#### Keynote Speaker Mark Chandler to Discuss Citizen Science and GIS

Redlands, California-ESRI marks its commitment to GIS education with its 10th annual ESRI Education User Conference (EdUC), scheduled for July 10-13, 2010, in San Diego, California. The conference provides the opportunity for the education community to share ideas and experiences and discuss the latest developments in geographic information system (GIS) technology through a series of presentations, panel discussions, and workshops. The conference overlaps the 30th annual ESRI International User Conference, which will be held July 12-16.

One of the hot topics at this year's education conference is the use of GIS to promote analytic and critical thinking skills. "These are the higher-order problem-solving skills employers say they want in future employees," says Angela Lee, libraries and museums manager for ESRI industry solutions.

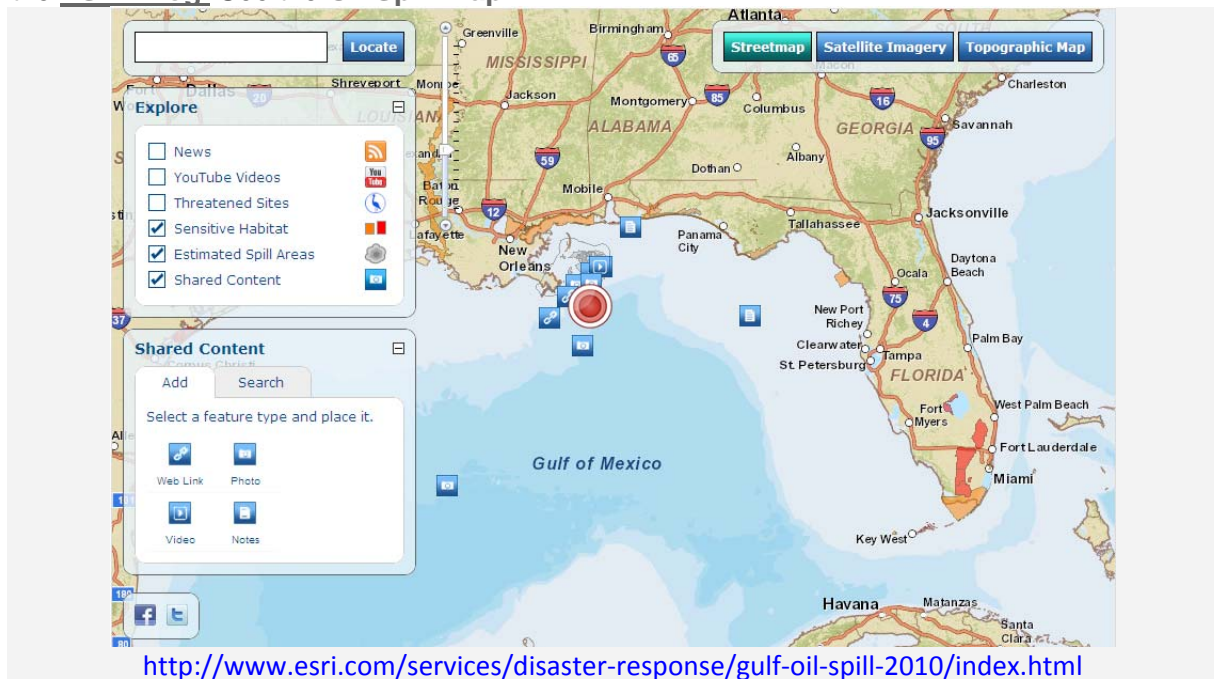
**Go to link:>**

<http://www.gisuser.com/content/view/20498/2/>

## Cartography in the Media

### Gulf Oil Spill Map from ESRI Enables Users to Add / Share via Social Media

An interesting application released by ESRI – The Gulf Oil spill Map. This clever webservice enables users to toggle between a Streetmap, Imagery, or Topo map view. then, users having information about relevant media (like a photo, youtube video or a link to an article) can add a point on a map with a link to the relevant resource. Imagine a user having collected photos along the coast near Gulf Shores Alabama can quickly add an ion to the map and provide a link to his flickr stream for access my all – great stuff! More details on the [ESRI Blog](#). See the [Oil Spill Map HERE](#)



**Go to link:>**

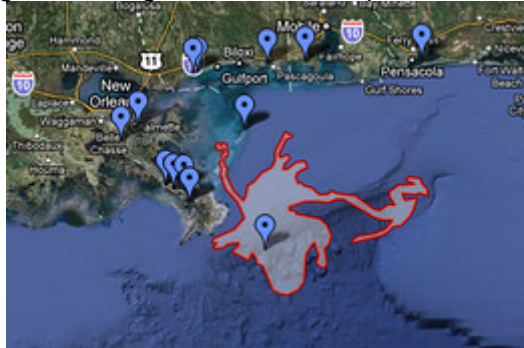
<http://blog.gisuser.com/?p=6787>

## Mapping the Gulf of Mexico Oil Spill

By Jennifer Valentino-DeVries  
Technology News and Insights

- May 5, 2010, 5:47 PM ET

The use of technology to publicly track the effects of disasters is becoming increasingly common — and it's getting noticed again with the oil spill in the Gulf of Mexico.



The latest map of the slick, along with the locations of reports about its effects

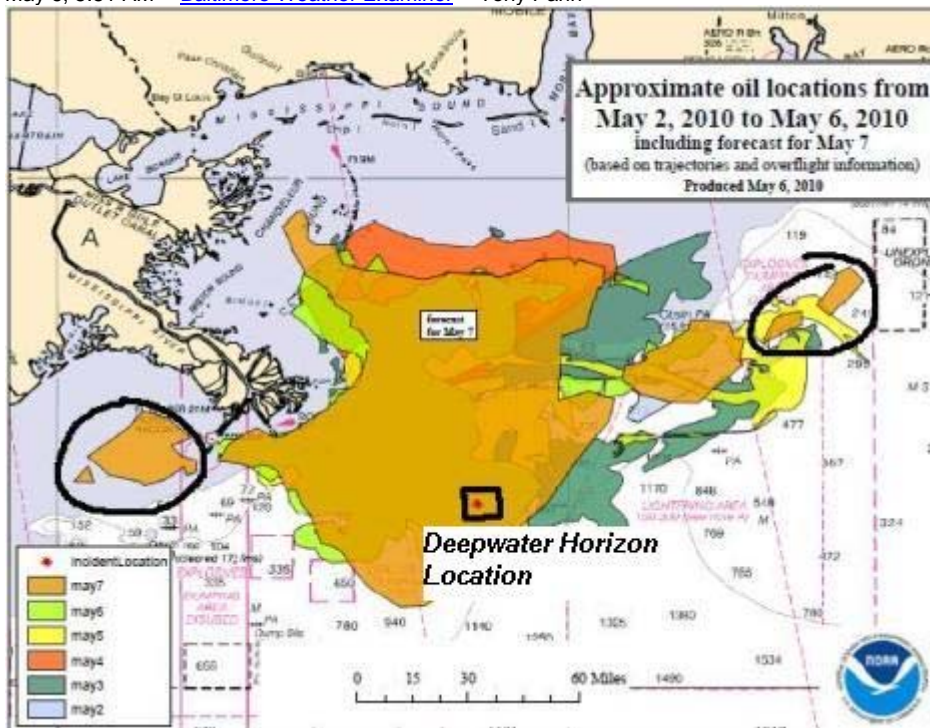
Google, which helped provide maps and people-finder tools [after the earthquake in Haiti](#), has set up [a site](#) dedicated to the oil spill that combines data from Louisiana's government as well as NASA and state non-profit organizations to provide a map of the oil slick and its effects.

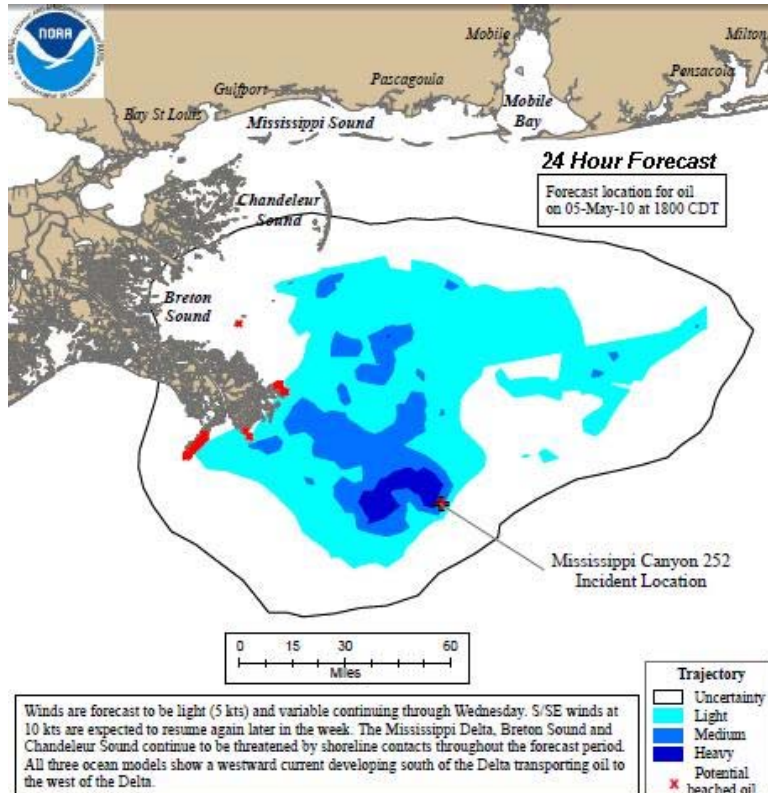
A [story in Wednesday's New York Times](#) described the use in Louisiana of a technology called Ushahidi, which likewise was used after this year's earthquakes and which is now allowing a group called the [Louisiana Bucket Brigade](#) to record data from people who send texts and tweets about everything from out-of-work fishermen to oil-covered animals. The Google tool also is drawing from the Ushahidi data and placing it on the map.

[http://blogs.wsj.com/digits/2010/05/05/mapping-the-gulf-of-mexico-oil-spill/?mod=rss\\_WSJBlog&mod](http://blogs.wsj.com/digits/2010/05/05/mapping-the-gulf-of-mexico-oil-spill/?mod=rss_WSJBlog&mod)

## Oil spill: NOAA outlook and wind forecast maps for May 6

May 6, 5:51 AM | [Baltimore Weather Examiner](#) | Tony Pann





Since the explosion of the [Deepwater Horizon oil rig on April 20th](#), NOAA has been on the scene as the nations leading scientific resource for oil spills. Here is the plot of the primary oil slick over the past 5 days as it continues to spread across the Gulf Coast states. A State of Emergency has been in place for Louisiana, Mississippi, Alabama, and Georgia. The weather had been a concern, churning up the waves and hurting initial efforts to burn the surface oil slick before making landfall. This was part of the same storm that flooded [Nashville, Tenn.](#) and led to at least [10 deaths in the Music City area \(see video here\)](#). See more Oil Outlook Maps and Wind Forecasts in the [slide show below](#). The flow from the north and northeast might help to hold the oil off of the coast today. With the light winds, crews hope to gain more control of the oil containment.

**Go to link:->**

<http://www.examiner.com/x-11224-Baltimore-Weather-Examiner~y2010m5d6-Oil-spill-NOAA-outlook-and-wind-forecast-maps-for-May-6?cid=exrss-Baltimore-Weather-Examiner>

## Gulf oil disaster shown over Detroit region

Posted May 10, 2010 - 1:11 p.m.



The Deepwater Horizon oil spill is shown over the Detroit region. (Google Earth)

BY MARK W. SMITH  
FREE PRESS WEB EDITOR

So just how big is the massive Deepwater Horizon oil leak in the Gulf of Mexico?

Web giant Google, using its interactive mapping platform Google Earth, is trying to help answer that question.

Using data from the National Oceanic and Atmospheric Administration, [Google Earth created an overlay](#) that can display the current oil spill over any region.

Shown above Detroit, the oil spill reaches from Ann Arbor in the west to St. Thomas, Ontario, in the east.

Google Earth expert Paul Rademacher has built [a convenient Web site](#) using the Google Earth plug-in that allows users to place the overlay on any region for comparison.

It is believed that 3.5 million gallons of oil have leaked into the Gulf of Mexico since the April 20 disaster with 210,000 more gallons entering the water each day, [according to the Associated Press](#).

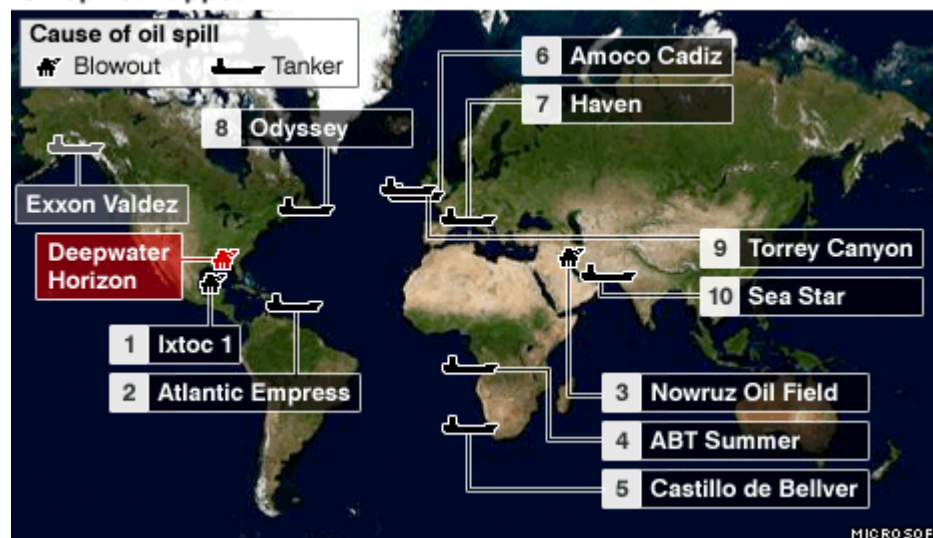
At that rate, the Deepwater Horizon leak would surpass the Exxon Valdez disaster as the nation's worst oil spill by Father's Day.

**Go to link:>**

<http://www.freep.com/article/20100510/BLOG36/100510038/1006/News04/Gulf-oil-disaster-shown-over-Detroit>

## Oil Spills Mapped

Oil spills mapped



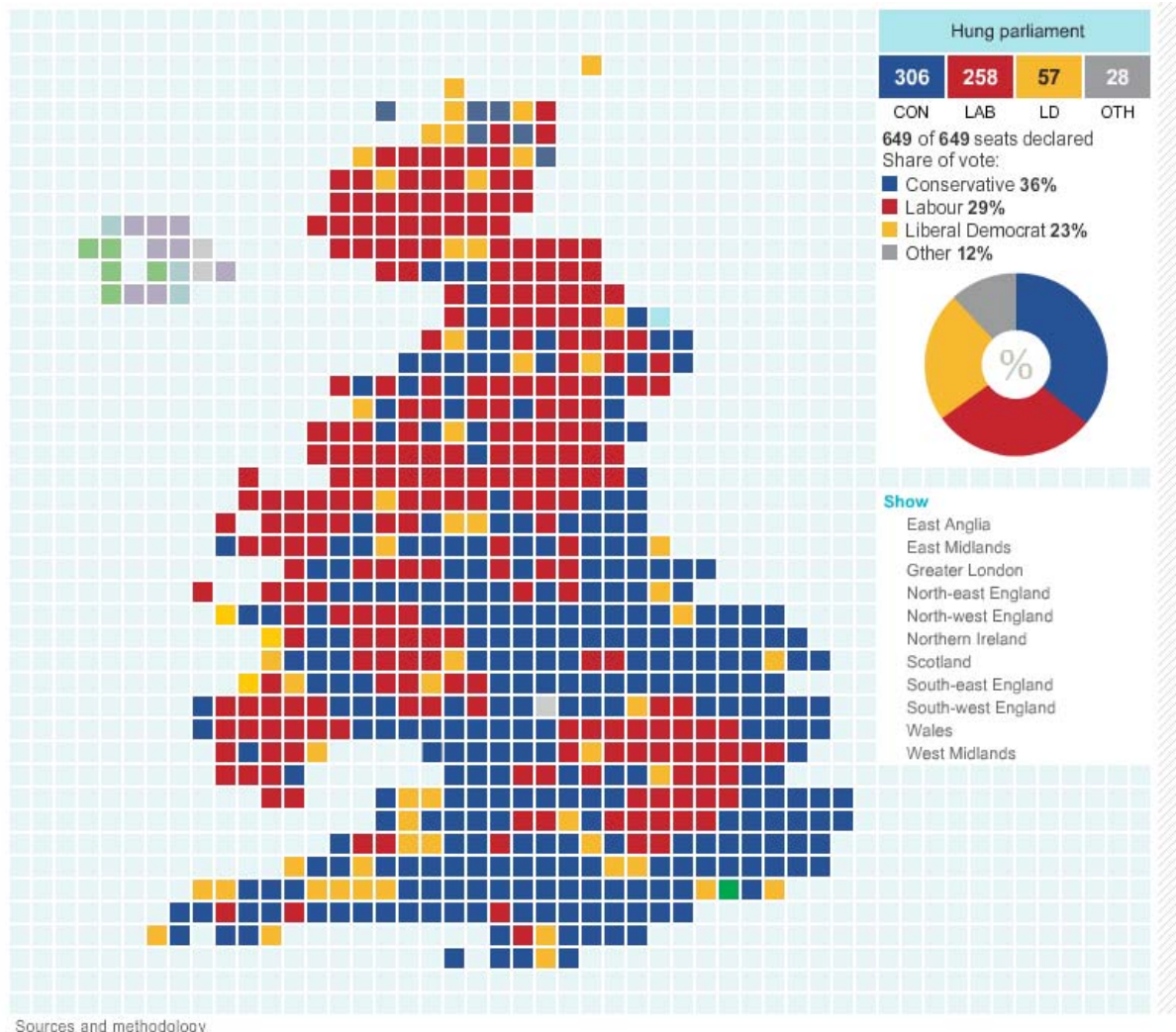
**Go to link:>**

[http://news.bbc.co.uk/2/hi/uk\\_news/magazine/8664684.stm](http://news.bbc.co.uk/2/hi/uk_news/magazine/8664684.stm)

## UK election results map

[guardian.co.uk](http://guardian.co.uk), Thursday 6 May 2010 21.51 BST

Election results map showing all the results in all UK constituencies



**Go to link:>**

<http://www.guardian.co.uk/politics/interactive/2010/may/06/uk-election-results-map>

## Unique map shows UK general election results in new light

Posted In: [Policy & Industry](#)

By EurekAlert

Tuesday, May 11, 2010

A unique map of the UK, showing alternative images of the General Election results, has been created by researchers at the University of Sheffield. The image, which is based on population data, shows how many people are represented by each political party.

The map was created by Benjamin Hennig, a postgraduate researcher at the University's Department of Geography. Unlike conventional maps or the commonly used constituency maps, it puts human beings as the focus to tell a different story of the election results. Geographical maps of the results can appear to overemphasise the vote of rural areas, as the physical size of these constituencies can be much larger than those in urban areas. The increasingly used constituency maps overcome this problem, by distorting land area in favour of a representation of seats in parliament, using one shape per constituency.

The new map created by the researchers goes one step further, by using a gridded population cartogram, with each grid cell sized according to the number of people who live there. By reflecting where people live in the country, the map enables us to see at a glance the number of people who are now represented by each party after the General Election on 6 May 2010.

Ben said: "We designed this map to provide an additional element to the existing election maps. When analysing the election results, the map provides an alternative angle by showing the real dimension of the people's vote in this election. All existing mapping approaches provide a very different perspective on the election outcome. With this new population projection we can understand much better the relation of population density and voting preferences."

**Go to link:>**

<http://www.rdmag.com/News/Feeds/2010/05/policy-unique-map-shows-general-election-results-in-new-l/>

### **Citizen mapping gaining ground**

OpenStreetMap, is a kind of grass-roots Wikipedia for maps that is transforming how map data are collected, shared and used — from the desktop to smartphones to car navigation.

By [Mike Swift](#)

San Jose Mercury News

Originally published Sunday, May 2, 2010 at 10:00 PM

When Brian "Beej" Hall first heard about an audacious volunteer effort to create an Internet map of every street and path in every city and village on the planet, he was hooked. At the time, the nascent effort had only a few American members, and the U.S. map was essentially a digital terra incognita.

Just a few years later, the Berkeley software engineer is editing digital maps so precise they include drinking fountains and benches in the Bay Area parks where he hikes, and the mapping community has swelled to more than 240,000 global members.

The effort, [OpenStreetMap](#), is a kind of grass-roots Wikipedia for maps that is transforming how map data are collected, shared and used — from the desktop to smartphones to car navigation.

Volunteers have mapped everything from bike paths in Silicon Valley to bear cages in the Berlin Zoo, and added places like Nairobi slums that are often ignored by commercial cartographers. In the hours after the devastating earthquake in Haiti, OpenStreetMap produced detailed digital maps of a quake-altered Port-au-Prince that were crucial to relief workers on the ground, a "crisis mapping" template for future disasters.

**Go to link:>**

[http://seattletimes.nwsourc.com/html/business/technology/2011756631\\_maps03.html](http://seattletimes.nwsourc.com/html/business/technology/2011756631_maps03.html)

### **Why a map is a window on to history**

Monday, 3 May 2010 14:24 UK

BBC News Magazine



Maps tell us so much more than how to get from A to B, or where C is in relation to D. They can be tools of power and snapshots of history, and reveal the fears and prejudices of their age, says historian Jerry

Brotton.

A remarkable thing about maps is people's resistance to the most basic fact of mapmaking - they can never be completely objective, accurate images of our world.

Talk to any mapmaker and they will tell you that the mathematics of mapping the globe onto a flat piece of paper mean that some form of distortion, manipulation and selection will always occur because, to put it simply, you cannot square the circle.

[Thanks to Horst Kremer for alerting me to this article]

**Go to link:>**

[http://news.bbc.co.uk/2/hi/uk\\_news/magazine/8654102.stm](http://news.bbc.co.uk/2/hi/uk_news/magazine/8654102.stm)

### **Atlas gives a bird's-eye view of the 17th century**

The Herald

Tuesday, May 04, 2010, 10:00



In 1699, cartographer Joel Gascoyne was summoned by the head of a powerful landowning family and offered the job of mapping large areas of Cornwall.

Just over three hundred years later, his endeavours have been collected in a sumptuous book, which gives a unique picture of land use and communities at that time.

**Go to link:>**

<http://www.thisisplymouth.co.uk/news/Atlas-gives-bird-s-eye-view-17th-century/article-2104292-detail/article.html>

### **A cartography of hope for biodiversity in the Americas**

May 5, 2010

Surfbirds News



Together for birds and people

[« ABC Releases List of Critical Sites Most at Risk from Gulf Oil Spill and Demands Re-Assessment of Ecological Impacts of U.S. Energy Policy | Main | A baseline for conservation and livelihoods in Palau »](#)

Bird species in the Americas are getting a helping hand at sites across the Western Hemisphere, with the launch today by BirdLife International's Important Bird Area (IBA) programme of a roadmap for conservation, the Americas IBA Directory. This publication identifies 2,345 top-priority conservation sites in all 57 countries and territories. The IBA program not only provides a blueprint for policy makers to make informed decisions on habitat protection and restoration but is already helping the conservation of both threatened and common species as well as a wealth of wider biodiversity. The launch has been generously hosted by Inter-American Development Bank in Washington D.C.





**Go to link:>**

[http://www.surfbirds.com/sbirdsnews/archives/2010/05/a\\_cartography\\_o.html](http://www.surfbirds.com/sbirdsnews/archives/2010/05/a_cartography_o.html)

### **Mapping Ancient Civilization, in a Matter of Days**

[The New York Times](#) ^ | 10 May 2010 | JOHN NOBLE WILFORD

Posted on Tuesday, 11 May 2010 4:52:12 PM by [Palter](#)

For a quarter of a century, two archaeologists and their team slogged through wild tropical vegetation to investigate and map the remains of one of the largest Maya cities, in Central America. Slow, sweaty hacking with machetes seemed to be the only way to discover the breadth of an ancient urban landscape now hidden beneath a dense forest canopy. Even the new remote-sensing technologies, so effective in recent decades at surveying other archaeological sites, were no help. Imaging radar and multispectral surveys by air and from space could not “see” through the trees.

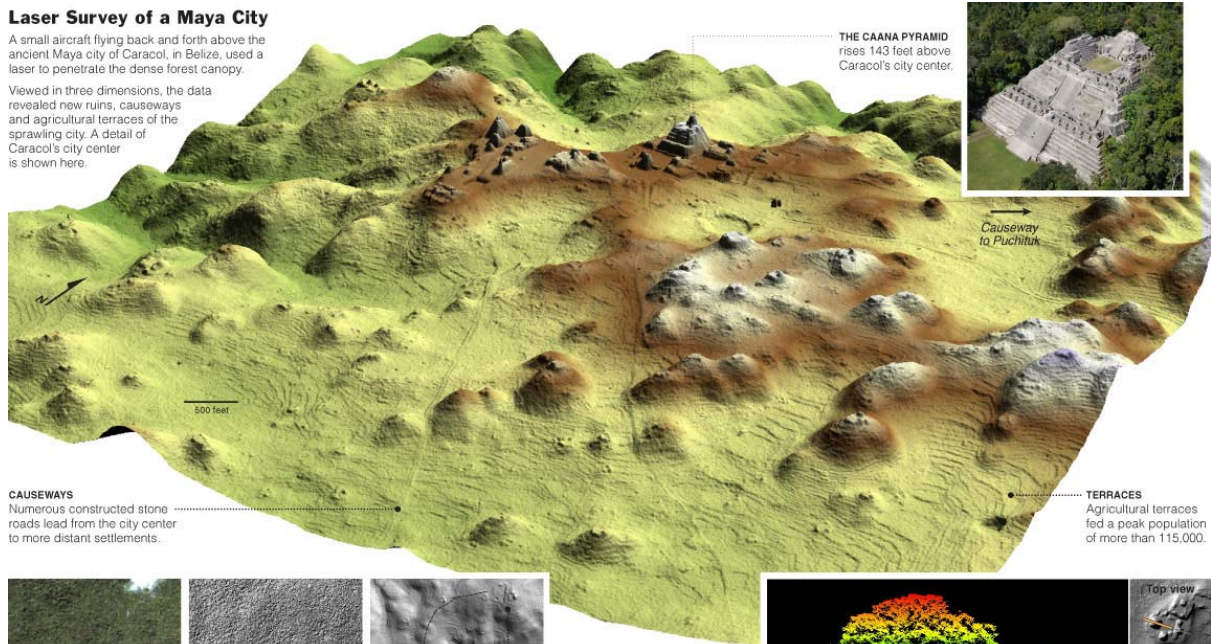
Then, in the dry spring season a year ago, the husband-and-wife team of Arlen F. Chase and Diane Z. Chase tried a new approach using airborne laser signals that penetrate the jungle cover and are reflected from the ground below. They yielded 3-D images of the site of ancient Caracol, in Belize, one of the great cities of the Maya lowlands.

In only four days, a twin-engine aircraft equipped with an advanced version of lidar (light detection and ranging) flew back and forth over the jungle and collected data surpassing the results of two and a half decades of on-the-ground mapping, the archaeologists said. After three weeks of laboratory processing, the almost 10 hours of laser measurements showed topographic detail over an area of 80 square miles, notably settlement patterns of grand architecture and modest house mounds, roadways and agricultural terraces.

## Laser Survey of a Maya City

A small aircraft flying back and forth above the ancient Maya city of Caracol, in Belize, used a laser to penetrate the dense forest canopy.

Viewed in three dimensions, the data revealed new ruins, causeways and agricultural terraces of the sprawling city. A detail of Caracol's city center is shown here.



THE CAANA PYRAMID rises 143 feet above Caracol's city center.



Causeway to Puchituk

### CAUSEWAYS

Numerous constructed stone roads lead from the city center to more distant settlements.

### TERRACES

Agricultural terraces fed a peak population of more than 115,000.



**SATELLITE IMAGERY** from the Ikonos satellite is unable to penetrate heavy foliage.

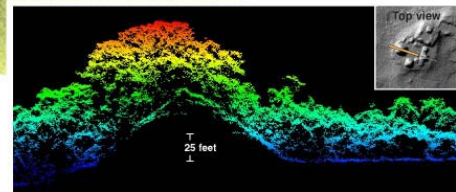


**LIDAR** Using a laser instrument called lidar, for light detection and ranging, to scan the upper canopy shows little detail (left). But some of the laser pulses penetrate the foliage and reflect off of the ground, revealing ruins and extensive terracing (right).



### PUCHITUK

Once surrounded by hundreds of open terraces, the hilltop settlement of Puchituk is now obscured by the forest.



**PEERING THROUGH THE FOREST** A lidar scan along a straight track (orange line, inset) shows reflections off of the ground and different layers of foliage, revealing the cross-section of a pyramid-shaped structure. In this image the measured points are colored according to height, and are accurate to about six inches.

Source: Arlen F. Chase, Diane Z. Chase and John F. Weishampel, University of Central Florida

THE NEW YORK TIMES, IMAGES COURTESY OF CARACOL ARCHAEOLOGICAL PROJECT

**Go to link:>**

<http://www.freerepublic.com/focus/f-chat/2510992/posts>

## New York City Gets Mapped for Solar

May 11, 2010

A twin-engine Shrike Commander equipped with a laser system flew aerial missions over New York City to [collect highly precise 3-D images of the city and its rooftops, trees, wetlands and everything else](#), reports the New York Times.

The data collected with a laser technology known as Lidar (light detection and ranging) will help the city determine if there are any wetlands and how many flat and pitched roofs there are to create an online solar map that will help assess the city's capacity for solar power, according to the article.

**Go to link:>**

[http://www.environmentalleader.com/2010/05/11/new-york-city-gets-mapped-for-solar/?utm\\_source=feedburner&utm\\_medium=feed&utm\\_campaign=Feed%3A+EnvironmentalLeader+%28Environmental+Leader%29](http://www.environmentalleader.com/2010/05/11/new-york-city-gets-mapped-for-solar/?utm_source=feedburner&utm_medium=feed&utm_campaign=Feed%3A+EnvironmentalLeader+%28Environmental+Leader%29)

## Is this the start of the end for pay-as-you-go satnav? GETTING THERE'S JUST TAKEN A NEW DIRECTION



**GOOGLE THERE:** Google's satnav is at least as good as the stuff on cheaper dedicated models - and it's free.

May 11, 2010

As Google Maps adds voice directions and dedicated satnav makers raise their game, we're on course for the fight of the navigators...

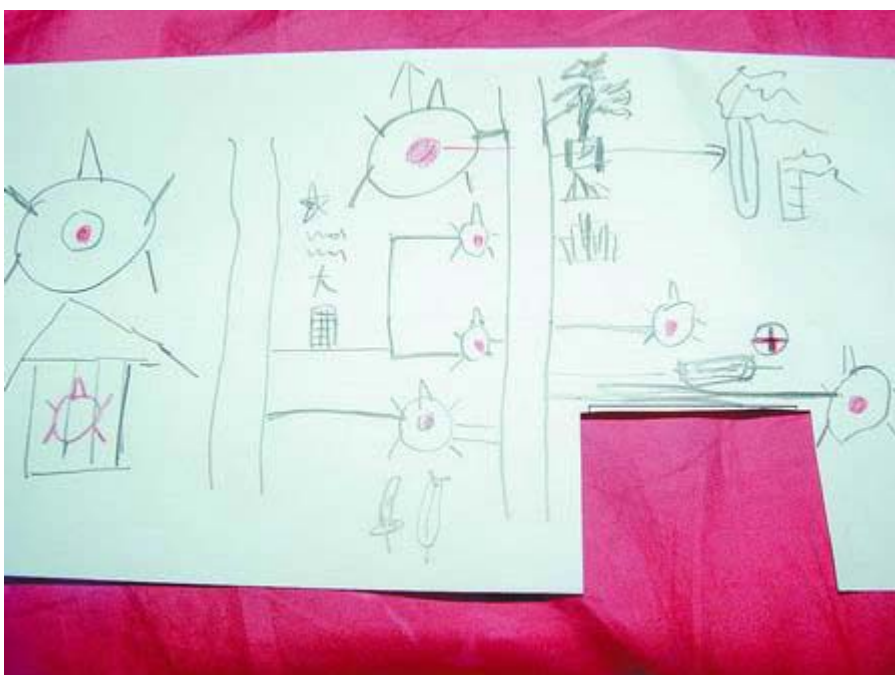
Apocalypse was unleashed on the quiet world of satnavs the other week but it's entirely pardonable if you missed it.

Unless you use geek-friendly Android phones such as the HTC Desire you won't know that its free Google Maps software now gives you turn-by-turn voice navigation, just like a TomTom, albeit with the less-than-reassuring warning "Directions may be wrong, dangerous, prohibited or involve ferries".

**Go to link:>**

<http://www.motoring.co.za/index.php?fArticleId=5464071&fSectionId=751&fSetId=381>

## Detective granny help police shut down illegal Internet bars



(Photo: Global Times/dahe.cn)

BEIJING, May 11 -- Shown is a crude map drawn by an illiterate 72-year-old grandmother surnamed Huang in Hebi, Henan Province detailing the location of six illegal Internet bars. She gave the guide to police who used it to shut them down.

Granny Huang used pictures of turtles to mark the locations (references to turtles in Chinese are often obscene) after she posed as a ragged bottle collector in order to find them and blend into the areas.

**Go to link:>**

[http://news.xinhuanet.com/english2010/odd/2010-05/11/c\\_13286639.htm](http://news.xinhuanet.com/english2010/odd/2010-05/11/c_13286639.htm)

## The art of map making

By Caroline Briggs

BBC News Arts and Culture reporter



Diogo Homem's A Chart of the Mediterranean Sea, 1570, is over a metre wide

To many people, thoughts of maps conjure up images of dusty classrooms and geography teachers.

But a new exhibition at the British Library, Magnificent Maps, aims to put the art back into how we view, and use, these often beautiful examples.

More than simply a topological survey of a country or continent, the maps on display are as diverse as their decorative features - from hunting dogs to sea monsters and cherubs blowing the winds across the ocean.

Picked from a "long shortlist" of 26,000 maps from the library's 4.5 million-strong collection, curators Peter Barber and Tom Harper carefully selected 80 impressive wall maps, some of which have never been displayed in public. "We wanted to make the point that maps can be artistic, so we intentionally selected maps that look good," explains Mr Barber. "The artistry of maps is seductive".

**Go to link:>**

<http://news.bbc.co.uk/2/hi/entertainment/8645303.stm>

## First Commercial Wind Farm in German North Sea Positioned with GNSS Receivers

Issue Date: , Posted On: 5/11/2010

Five Ashtech ProFlex 500 GNSS receivers are helping guide the operations of the self-propelled jack-up vessel Bard Wind Lift I, the first construction vessel specially designed for installing offshore wind turbines, to build the first commercial wind farm in the German North Sea. The Ashtech GNSS receivers are used for every maneuver of Wind Lift I, including precisely positioning the vessel, assisting it to accurately jack itself up from the seabed on 71 meter long legs, and installing the foundation piles for the wind turbines.

**Go to link:>**

<http://www.geoplace.com/ME2/dirmod.asp?sid=&nm=&type=MultiPublishing&mod=PublishingTitles&mid=13B2F0D0AFA04476A2ACC02ED28A405F&tier=4&id=BB787FFCEDAA4FD79F56D36478703C49>

## **Indian satellite launch postponed to June**

New Delhi News.Net

Friday 30th April, 2010 (IANS)

The Indian space agency is likely to launch its rocket, Polar Satellite Launch Vehicle (PSLV-C15), carrying its cartography satellite Cartosat-2B and couple of other payloads, sometime in June.

Originally scheduled for launch May 9, the Indian Space Research Organisation (ISRO) Thursday decided to postpone the flight to a future date as it found 'a marginal drop in the pressure in the second stage of the vehicle during mandatory checks'.

**Go to link:>**

<http://www.newdelhinews.net/story/629227>

## **India to launch cartography satellite in June**

New Delhi News.Net

Thursday 6th May, 2010 (IANS)

The Indian space agency is expected to launch June 5 its Polar Satellite Launch Vehicle (PSLV-C15), carrying a cartography satellite and a couple of other payloads, according to the US-based space consultancy firm Futron Corp.

But a source in the Indian Space Research Organisation (ISRO) told IANS that the launch is most likely to happen during the second week of June.

The 44-metre tall PSLV is a four-stage (engine) rocket powered by solid and liquid propellants alternatively.

Originally scheduled for launch May 9, the ISRO decided to postpone the flight to a future date as it found 'a marginal drop in the pressure in the second stage of the vehicle during mandatory checks'.

At the time of postponement, the rocket was almost ready except for the loading of the satellites that have arrived at the launch centre.

According to ISRO officials, once the rocket is fully assembled and satellites loaded, around 10 days were needed to test the entire systems and sub-systems.

ISRO technicians meanwhile have dismantled the second stage and are carrying out tests and analysis to spot the failed component that needs to be replaced at the Sriharikota rocket launch centre, 80 km from here.

The second stage had to be dismantled as the faulty part is in an inaccessible area after the rocket was assembled fully.

ISRO official said once the faulty part is replaced, all the tests that were carried out earlier have to be done once again.

The main cargo of the rocket is the 690-kg Cartosat-2B satellite, which will carry a sophisticated panchromatic camera on board to take higher (0.8 metre) spatial resolution imageries with a swath of 9.6 km of specific spots for applications such as mapping, land information and geographical information system.

**Go to link:>**

<http://www.newdelhinews.net/story/631628>

## **NigeriaSat-2 Small Satellite Launch Date Announced**

Issue Date: , Posted On: 5/11/2010

SSTL has today announced that it will launch the NigeriaSat-2 and NigeriaSat-X satellites on

behalf of the National Space Research and Development Agency (NASRDA) by a Dnepr launch vehicle from Yasny, Russia on 29th October 2010.

NigeriaSat-2 is the most advanced small satellite ever to be launched, defining new standards in Earth observation and avionics. The spacecraft, which is based upon SSTL's flagship SSTL-300i platform, will be used primarily for resource management and mapping of the Nigerian territory.

Its mission objectives include providing high resolution maps of Nigeria every four months, monthly monitoring of Nigerian crops for food supply security, and supporting the development of the Nigerian national Geographical Information System (GIS) by providing high quality geospatial data.

**Go to link:>**

<http://www.geoplace.com/ME2/dirmod.asp?sid=&nm=&type=MultiPublishing&mod=PublishingTitles&mid=13B2F0D0AFA04476A2ACC02ED28A405F&tier=4&id=91CA4B6419CD4D4C868D3B6E3C1DCEAC>

### **Mapping program will help farmers deal with pests**

Friday, 14/05/2010

Farmers now have a new tool to manage pests and beneficial insects on their property. It's a mapping program that uses information in the Pestweb database overlaid on satellite maps, which allows farmers to see what pest build-up is like on neighbouring properties or throughout their region.

The tool was developed by Soilcare, Landcare and I and I's centre for Horticulture in Alstonville. It was funded under the Federal Government's Caring for our Country Program. Bonnie Walker, from Soilcare, says it will eventually be widely available .

"It can be used not only for insect pests, but also for disease," she says.

"For example, if you had an exotic pest outbreak, it's already in place and so easy to use that farmers can easily upload data to this.

"Farmers usually like tools that make their job easier."

**Go to link:>**

<http://www.abc.net.au/rural/news/content/201005/s2899737.htm>

### **OpenGeoscience Web Mapping Service Serves Free UK Geology Data**

May 13, 2010

REDLANDS, Calif., May 13, 2010 /PRNewswire via COMTEX/ -- The British Geological Survey (BGS) ushers in a new era of geologic mapping services with the launch of its OpenGeoscience Web site, built on ESRI's ArcGIS technology. The Web site is the world's first Web map service built on vector data serving attributed geologic data for an entire country.

OpenGeoscience's Web interface gives site visitors viewing access to geologic maps of the whole of Great Britain at a scale of 1:50,000. Built on ArcGIS Server, OpenGeoscience enables resolution of geologic details to about 50 meters on the ground, which is essentially street level, a world first in terms of releasing countrywide attributed information at this scale.

"OpenGeoscience provides the public with a wealth of geological information and resources including maps, photos, digital data, research reports, and software," explained Richard Hughes, BGS director of information and knowledge exchange. "These can be combined with other environmental information to help people better understand their world."

**Go to link:>**

<http://it.tmcnet.com/news/2010/05/13/4787794.htm>

## NOAA's modernized positioning system key to improved mapping, emergency and land planning

By EurekAlert


Thursday, May 13, 2010

NOAA's National Geodetic Survey – the official U.S. government source for determining precise latitude, longitude and elevation – is undergoing a modernization effort that takes into account advances in GPS and other technologies. The effort is important to all activities requiring accurate positioning information including levee construction projects, the design of evacuation routes in hurricane-prone areas and the forecast of sea-level rise in coastal communities. The modernized National Spatial Reference System will take even greater advantage of newer technologies and better track changes in position and elevation over time to improve and update digital maps.

**Go to link:>**

<http://www.rdmag.com/News/Feeds/2010/05/environment-noaas-modernized-positioning-system-key-to-improve/>

## New Global Map of Every Country's Tallest Building

- By [Alexis Madrigal](#) 
- May 7, 2010 |
- 2:11 pm |
- Categories: [Tech](#)
- 



You can now see the tallest building in every country of the world on one big map, thanks to an obsessive documentarian of engineering accomplishments.

The anonymous cartographer described the new map on the website, [Google Earth Hacks](#) using his handle, blackdogprod.

“I have fanatically spent the last year thoroughly studying *every country* in the world to find the correct building,” blackdogprod wrote. “I’ve used every resource available on the internet to find and verify the tallest building in every country, with the most accurate height available.”

**Go to link:>**

<http://www.wired.com/wiredscience/2010/05/global-map-of-tallest-buildings/#ixzz0oHJatV1o>

## **Always keep a map handy**

**Amit Agarwal Amit Agarwal, Hindustan Times**

Mumbai, May 25, 2010

Most online mapping applications have a built-in distance calculator to help you quickly measure the road distance between any two cities or any two points within a city.

Google Maps has had a special distance measurement tool in their Labs for a while. It lets you calculate the shortest route (as the crow flies) between any two points on Earth.

There’s a new distance calculator included in Bing Maps as well but it’s a little different and probably a bit more useful than what you have in Google Maps.

### **How to get started on Bing.**

To get started, go to [bing.com/maps/explorer](http://bing.com/maps/explorer) and select the “Distance Calculator” app.

You can either drag the red flag to the starting address, or for more accurate results, search the exact location before adding the flag to the map.

Now drag another flag to the destination address and Bing will immediately calculate the road distance as well as the flight distance between the two points.

### **Understand the icons**

The airplane icon represents the air distance between the locations while the bus and car icon will give an approximate idea of the road distance. You can continue adding any number of points to your route and the total driving distance will automatically get updated.

**Go to link:>**

<http://www.hindustantimes.com/rssfeed/gadgets/Always-keep-a-map-handy/Article1-548304.aspx>



## Cartographer – A Life Worth the Living

### Jacques Bertin (1918 -- May 3, 2010)

From Wikipedia, the free encyclopedia



The French Committee of Cartography (CFC) will commemorate Jacques Bertin's 40 years of work as a cartographer, during the ICA 2011 conference in different ways including a talk by a French cartographer and a specific session on graphic semiotics.

**Jacques Bertin** was a [French cartographer](#) and theorist, known from his book *Sémiologie Graphique* (*Semiology of Graphics*), edited in 1967. This monumental work, based on his experience as a cartographer and geographer, represents the first and widest intent to provide a theoretical foundation to [Information Visualization](#).<sup>[1]</sup>

#### **Biography**

Jacques Bertin was born in 1918 in [Maisons-Laffitte](#), [Yvelines](#). When he was 10, he received the first prize of cartography at primary school. He never had problems with drawing, and pursued interests including architecture, the teaching of drawing and cartography.<sup>[1]</sup> Finally he ended up studying [geography](#) and [cartography](#) at the [Sorbonne](#). He became founder and director of the Cartographic Laboratory of the [École pratique des hautes études](#) (EPHE) in 1954 and director of education in 1957. In 1967 he became professor of the Sorbonne,<sup>[2]</sup> and in 1974 he became director of education and director of the Geographical Laboratory of the [École des hautes études en sciences sociales](#) (EHESS), which is part of the École pratique des hautes études (EPHE, VIe Section).<sup>[3]</sup> Later in the 1970s he became head of research at the [Centre national de la recherche scientifique](#) (CNRS).<sup>[4]</sup>

In 1993 Bertin received the "Mercator-Medaille der Deutschen Gesellschaft für Kartographie".<sup>[5]</sup>

Bertin died in [Paris](#) on May 3, 2010.

#### **Publications**

Jacques Bertin has published numerous scientific maps, papers and articles on map making, semiology, graphical information and graphic processing.

- 1967. *Sémiologie Graphique. Les diagrammes, les réseaux, les cartes*. With Marc Barbut [et al.]. Paris : Gauthier-Villars. (Translation 1983. *Semiology of Graphics* by William J. Berg.)
- 1969. *Etude et réalisation d'un dispositif de goniométrie et d'observation de formes d'onde, en large bande*.
- 1976. *Experimental and Theoretical Aspects of Induced Polarization*. 2 vol. With J. Loes. Berlin : Gebruder. Borntraeger.
- 1977. *Graphique et le traitement graphique de l'information*. With Serge Bonin [et al.].
- 1977. *La graphique et le traitement graphique de l'information*. Paris : Flammarion, 1977, 273 p. (translation 1981. *Graphics and graphic information-processing* by William J. Berg and Paul Scott).
- 1992. *Harper atlas of world history*. with Pierre Vidal-Naquet. N.Y. : Harper Collins.

- 1997. *Atlas historique universel. Panorama de l'histoire du monde*. With J. Devisse, D. Lavallée and J. Népote. Genève : Éd. Minerve, 180 p.
- 2006. *Nuovo atlante storico Zanichelli / sotto la direzione di Pierre Vidal-Naquet ; direzione della cartografia*.

	Points	Lines	Areas	Best to show
Shape		possible, but too weird to show	cartogram	qualitative differences
Size			cartogram	quantitative differences
Color Hue				qualitative differences
Color Value				quantitative differences
Color Intensity				qualitative differences
Texture				qualitative & quantitative differences

<http://understandinggraphics.com/wp-content/uploads/2010/01/retinal-variables.png>  
<http://www.cl.cam.ac.uk/~afb21/InfoArch/OlympicSymbols.jpg>

[http://en.wikipedia.org/wiki/Jacques\\_Bertin](http://en.wikipedia.org/wiki/Jacques_Bertin)

## Jacques Bertin's Semiology of Graphics

by Juan C. Dürsteler

The work of Jacques Bertin, embodied in the theory of graphic representation, set in the 60s the principles of the semiology of graphics, indispensable to thoroughly understand the visual language.



Cover of the book "Semiologie graphique" by Jacques Bertin. Click on the image to enlarge it.

Finally I've been able to get a copy of the book "**Semiologie Graphique**" by **Jacques Bertin**, lent for a week thanks to the good offices of the Library of the University. While reading it I'm comfortably waiting for the arrival of my personal copy.

For this [book](#), edited for the first time in 1967, is **one of the classical works of graphical visualisation**. Finding a reprinted version of it in English is not an easy task. We must thank the *L'Ecole des Hautes Etudes en Sciences Sociales* in Paris for the 1999 French reprint as part of their "Les Re-impressions" collection.

It's worth noting that a book that should have a place in the Library of anybody interested in the topic, **is today very difficult to acquire and even access**, especially in its English version.

Digressions apart, Bertin's work, formally educated in cartography, stands out for its formal rigour and constitutes, for many people, a monumental one that is to graphics what the Mendeleev periodic element table is to Chemistry. That is, **the organisation of the visual and perceptual components of the graphics according the features and relations between the data**.

**Serge Bonin**, who worked for many years with Bertin, [explains](#) that in the graphics lab they used to help the researchers that came with last minute drawings for their publications. They noticed that almost nobody looked at them and even less people understood those graphics.

This situation forced them **to decide between just redrawing with their expert hands what they were asked to and trying to analyse and understand the drawing's contents**, rebuild the data table and recreate the graphic pursuing the quick and easy understanding of the information and the appearance of visually relevant information.

In the same way that other researches have done later in the environment of graphics, the quest for the reason of the ineffectiveness of the same lead them to reflect on how to make graphics in a way that could render them useful, **identifying their visual variables and finding the rules to build graphics properly**.

Semiology, proposed by **Ferdinand de Saussure**, is the science that studies the signs used in communication. Linguistics is one of the fundamental parts of semiology. So, the research of Bertin and his group had them **facing the definition of the study of the visual signs along with their "grammatical" rules**.

The basis of Bertin's work is the acknowledgement that (in the words of Serge Bonin) "graphics is a set of signs that allow you to transcribe the existing relations of difference, order or proportionality amongst qualitative or quantitative data". **Bertin restricts the field of semiology of graphics, excluding musical notation, language and mathematics, systems "bound to the temporal linearity"**.

Among the systems aimed at the visual sense, that, unlike hearing, is non sequential (we can look at whatever part of the picture, but a song has a start and a finish), he discards symbolics and art, the meanings of which depend on the relationships between the signs and are, hence, disputable. This way **what remains finally is the "rational part" of the visual signs, that can be structured with a determined grammar**.

Graphic representation has a double function for Bertin: as an **artificial memory** and as a **tool for discovery**, bound to the huge power of visual perception.

**It is, at the end, a seminal work that has influenced a great deal of the work in this field, and with the arrival of the PC, a fair amount of years later has opened up, as Bertin himself said, unlimited possibilities.**

<http://www.infovis.net/printMag.php?num=84&lang=2>

## Cartography - Life Lessons

### Sat Nav Sailor – At France, turn right

MX News  
5-5-2010

A hapless boat captain has run aground after using a car GPS system to negotiate the Thames River.

The hapless UK sailor and his passenger also had no maps, emergency flares or radio as they used the sat-nav to guide the \$33,000 9.75, motor cruiser through treacherous waters. They were heading out of the Thames estuary when they ran aground. A Coast Guard source said: "Using a sat-nav system designed for cars is one of the most ridiculous things I have ever heard in my life."

### Rescue after GPS leads tourists astray

- The Australian newspaper
- From:AAP
- May 07, 2010 7:40AM

A TIP for tourists: if your GPS system leads you into a forest, forces you to unlock gates and move rocks blocking the road, chances are something is amiss.

South Korean tourists travelling from Brisbane to Rockhampton had to be rescued from a remote track in a forestry reserve in southeast Queensland after they tried to follow the directions given by their car's GPS system.

The three followed gravel roads, then dirt roads, then went through a couple of gates, and ended up bogged in a gully in Cordalba State Forest, near Childers.

The men, who did not speak English, ignored danger signs and moved rocks blocking a road, to get to an isolated point that was practically inaccessible, the *Bundaberg NewsMail* reports.

When their Ford Falcon became bogged the men tried to walk out, further endangering themselves.

Bundaberg Police received a 000 call about 1am on Wednesday. A council worker found the tourists' vehicle six hours later.

The forest has form, Childers Police Sergeant Geoff Fay told the paper. A month ago backpackers also got lost there after following their GPS too faithfully.

He said travellers should learn how to use their GPS, and turn back if something looks wrong or signs don't match. *(Thanks go to Greg Heron for finding this article)*

**Go to link:>**

<http://www.theaustralian.com.au/news/breaking-news/rescue-after-gps-leads-tourists-astray/story-fn3dxity-1225863416380>

### **Alliance for Safe Navigation releases free safety white paper**

*Boating Industry*

Friday April 23, 2010

ENGLEWOOD, Colo. — Jeppesen, with its partners in the [newly formed Alliance for Safe Navigation](#), recently published a white paper that examines common causes of boating accidents, property loss and injury and educates boaters about keeping safe by making sure they sail with up-to-date navigation charts.

The white paper, "Boat Smart, Update Your Charts," is freely available through the Jeppesen Web site.

"The evidence clearly shows that too many boaters are sailing with old, outdated charts (or none at all), and that this contributes to an unacceptable number of grounding accidents in the U.S. each year," Jeppesen Executive Ken Cirillo said in a release. "Whether navigating with paper charts or electronic charts, boaters need to have accurate chart data that incorporates all the latest changes and corrections. The industry has made important strides in updating marine cartography and making it readily available to the boating public. Now, we must focus on educating boaters about the need for updating and its many benefits, which can also include savings on boat insurance."

**Go to link:>**

<http://www.boating-industry.com/output.cfm?id=2498293>

### **NY man dies as responders get lost, EMS workers circled his house for 37 minutes because they couldn't find the address on their outdated map**

By Ginger Adams Otis

The New York Post

May 10, 2010

QUEENS, NY — A Queens man died from lack of oxygen as confused firefighters circled his house for 37 minutes because they couldn't find the address on their outdated map, The Post has learned.

**Go to link:>**

<http://www.ems1.com/communications-dispatch/articles/817587-NY-man-dies-as-responders-get-lost/>

## UK National Archives Director: "80 per cent of people can't read it or understand" Data Online



Tuesday, May 11, 2010

The director of information policy and services at the National Archives, Carol Tullo, said the public sector needs to make information more easily accessible to people to achieve efficiency while speaking at the ESRI UK UC. She went on:

She made the point that many people cannot read a simple graph or tabular material. "So if you're sitting somewhere in authority, in a local government department or a government agency, and you're churning out information and you're saying, 'It's online, it's there for everyone to look at' - 80 per cent of people can't read it or understand it."

### And, she said nice things about GIS:

Tullo also described GIS as an important data tool. "There is absolutely no question that information does depend almost entirely on mapping place, space and location," she said.

#### Go to link:>

<http://apb.directionsmag.com/archives/7925-UK-National-Archives-Director-80-per-cent-of-people-cant-read-it-or-understand-Data-Online.html>

## Map Fan Jailed On U.S. Spy Charges

By Alexander Bratersky

The St. Petersburg Times

Issue #1574 (35), Tuesday, May 18, 2010

MOSCOW — A Moscow court sentenced a map enthusiast to four years in prison on Thursday for passing classified information to the United States that one report said could help the U.S. military in a missile strike against Russia.

The trial looked unlikely to upset U.S.-Russian relations, which have rebounded since U.S. President Barack Obama announced a "reset" last year and, among other things, ditched a plan to place an anti-missile shield in Central Europe that Moscow saw as a security threat. But fears of Russia's vulnerability to a U.S. strike have been voiced in hawkish Russian circles after Obama and President Dmitry Medvedev signed the New START agreement to cut nuclear arms in April, and a retired Russian general warned on Thursday that the country's air defenses were weak.

The Moscow City Court said cartographer Gennady Sipachyov was convicted of espionage during a closed trial for sending secret maps belonging to the Russian military's General Staff to the Pentagon over the Internet.

#### Go to link:>

[http://www.times.spb.ru/index.php?story\\_id=31452&action\\_id=2](http://www.times.spb.ru/index.php?story_id=31452&action_id=2)

## China - new rules for Net mapping

By Wang Qian and Wang Xing (China Daily)

Updated: 2010-05-19 07:43

BEIJING - An updated standard for Internet map servers will be implemented next month to avoid State secrets being disclosed and uncertified maps published online, authorities have said.

The new standard issued by the State Bureau of Surveying and Mapping, one year after the first standard was launched, requires all Internet map servers to keep servers storing map data inside the country and provide public Internet protocol addresses.

Under the latest standard, qualified online map servers must have no record of information leakage in any form in the past three years.

The new regulation includes all maps downloaded or copied from the Internet onto cell phones and handheld computers.

By the end of December, the authorities will also crack down on unregistered or illegal Internet map servers and release the blacklist to the public.

Song Chaozhi, deputy director of the State Bureau of Surveying and Mapping, said in a conference on Internet map services in Beijing on May 14 that there are two main problems existing in the field: One is publishing maps with wrong locations or information, and the other is leaking sensitive information involving State secrets on maps.

All these will harm consumers' rights or even endanger national security, he said.

Cases of illegal mapping are not rare in the country.

The national surveying and mapping bureau reportedly punished three Germans who collected geographic information in Yichang, Hubei province and later mapped these in computers.

Similarly, the Longyan bureau of land and resources in Fujian province reportedly meted out administrative punishment to a Japanese who measured 195 locations inside Longyan and located 80 of them on his map.

**Go to link:>**

[http://www.chinadaily.com.cn/china/2010-05/19/content\\_9865442.htm](http://www.chinadaily.com.cn/china/2010-05/19/content_9865442.htm)

## Breckenridge Summer Deals

By [RJ Magill](#)

Published: 5/21/2010

Breckenridge, Colorado is the place to recharge those life-weakened batteries. Summer deals abound in the "Kingdom of Breckenridge"!

It was back in the old mining days when a careless cartographer omitted the entire town of Breckenridge, Colorado from official maps. The town did not officially exist until 1935 and up until that time residents referred to their town as "The Kingdom of Breckenridge". But perhaps the cartographic mistake was fortuitous, for the citizens (visitors too) are able to throw "No Man's Land" celebrations every August; adding yet another reason to revel in this summertime paradise.

**Go to link:>**

<http://www.buzzle.com/articles/breckenridge-summer-deals.html>

## Cartographic Resources

### What is OpenStreetMap?

A visit to [www.openstreetmap.org](http://www.openstreetmap.org) reveals a searchable map that covers cities and towns around the world and that looks and acts a lot like Google Maps or Microsoft's Bing maps — with two crucial differences: OpenStreetMap has an edit button, allowing users who sign up for an account to make changes or add features, and it has an export button, allowing people to freely use map data for software applications or other uses. An iPhone app, Mapzen, is an easy way to contribute to the map.

### From Children's Maps to Child's Play: Imagination Inspires Cartography



**Author:** Kenneth Field

**Source:** [Cartographic Journal, The](#), Volume 47, Number 1, February 2010 , pp. 3-6(4)

**Publisher:** [Maney Publishing](#)

**Go to link:>**

<http://www.ingentaconnect.com/content/maney/caj/2010/00000047/00000001/art00001>

## The Beauty of Maps

### Seeing the art in cartography

A beautiful site to let you explore historical *maps* in incredible detail. Here you can look at old *maps* and discover their stories, and gaze into the future.



The Beauty of Maps SEEING THE ART IN CARTOGRAPHY

Home Historical Maps Digital Worlds Video Highlights On TV

Desceliers' World Map, 1550

Beyond Europe

Elephants and camels live among mutated humanoids

The focal point of the Middle East is the Red Sea. Its literal colouring is reminiscent of the medieval Psalter Map, which has obvious religious connotations. The text box next to the feature, however, claims that the water gets its colour from the stones that lie on the seabed.

The continent of Africa is drawn with accuracy. However, its overly stretched appearance on the map shows cartographers' difficulty in determining the true dimensions of this vast land.

There are elephants and camels in North Africa, and the human imagery placed

Back to Map

Go to link:>

[http://www.bbc.co.uk/bbcfour/beautyofmaps/historical\\_maps.shtml#/psalter/intro/](http://www.bbc.co.uk/bbcfour/beautyofmaps/historical_maps.shtml#/psalter/intro/)

## Geographic Information and Cartography for Risk and Crisis Management

Towards Better Solutions

Series: [Lecture Notes in Geoinformation and Cartography](#)

Konecny, Milan; Zlatanova, Sisi; Bandrova, Temenoujka L. (Eds.)

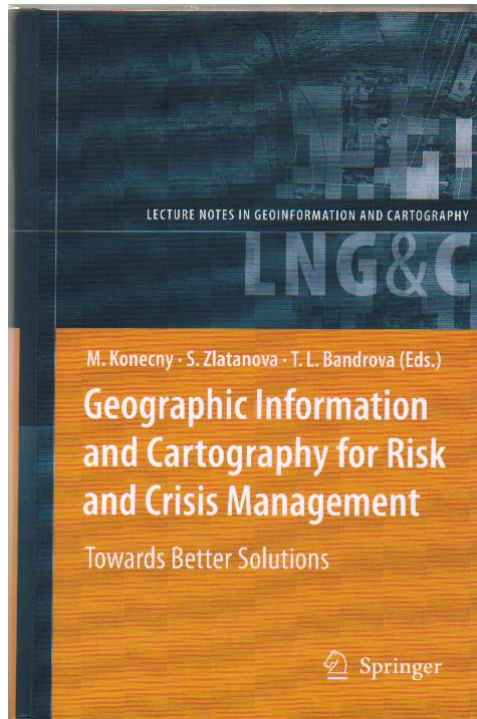
1st Edition., 2010, XXII, 429 p., Hardcover

ISBN: 978-3-642-03441-1

**129,95 €**

Cartography and geographic information (GI) are remarkably appropriate for the requirements of early warning (EW) and crisis management (CM).

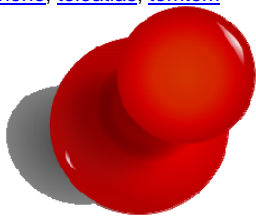
This book outlines research frontiers and applications of cartography and GI in EW and CM and document their roles and potentials in wider processes going on in information /knowledge-based societies



## Mobile location is just the beginning for TeleAtlas

Posted by [Cian](#) on May 11, 2010 16:38

Tags: [location](#), [mobile](#), [mobile device](#), [mobile navigation](#), [mobile-location](#), [navigation](#), [personal navigation device](#), [PND](#), [smartphone](#), [teleatlas](#), [tomtom](#)



In the last few years, [mobile location](#) has gone from being *maybe* the next big thing to *being* the next big thing. Location Based Services (LBS) have influenced everything from [social networking](#) to on-line search. But perhaps the market that has felt the presence of location most sharply is navigation. Following their dynamite representation at [TheWhereBusiness' Location Business Summit](#), we interviewed **Simon Glassman, the Director of Vertical Marketing (EMEA)** for digital mapping and navigation powerhouse [TeleAtlas](#).

**Go to link:>**

[http://www.gomonews.com/mobile-location-is-just-the-beginning-for-teleatlas/?utm\\_source=feedburner&utm\\_medium=feed&utm\\_campaign=Feed%3A+GomoNews+%28GoMo+News%29](http://www.gomonews.com/mobile-location-is-just-the-beginning-for-teleatlas/?utm_source=feedburner&utm_medium=feed&utm_campaign=Feed%3A+GomoNews+%28GoMo+News%29)

## New Kite Aerial Imagery of BBQ Island

May 13, 2010

Google Earth Blog

The San Blas islands are a beautiful archipelago of mostly pristine Caribbean tropical islands located off the northern coast of Panama. There are hundreds of little islands in this area, many of which are occupied, and managed, by the Kuna Indians. A couple of months ago, we spent three weeks exploring the lovely San Blas islands in our sailboat [Tahina](#) as part of our five-year expedition around the world. Unfortunately, Google Earth has had no high resolution imagery for the San Blas islands. So, we had to resort to only charts and guide books to learn about the islands.



While visiting the islands, we had one good day where the winds and weather were perfect for flying our kite to take aerial photos.



**Go to link:>**

[http://www.gearthblog.com/blog/archives/2010/05/new\\_kite\\_aerial\\_imagery\\_of\\_bbq\\_isla.html?utm\\_source=feedburner&utm\\_medium=feed&utm\\_campaign=Feed%3A+GoogleEarthBlog+%28Google+Earth+Blog%29](http://www.gearthblog.com/blog/archives/2010/05/new_kite_aerial_imagery_of_bbq_isla.html?utm_source=feedburner&utm_medium=feed&utm_campaign=Feed%3A+GoogleEarthBlog+%28Google+Earth+Blog%29)

## **Mapping technology provides journalists a new medium for storytelling online**

May 18, 2010

By [Nonny de la Peña](#)

The Online Journalism review

Cartography is undergoing a renaissance that is opening new opportunities for journalists. For example, the Los Angeles Times' successfully updates and moves the police blotter onto the Web by using Google maps to pinpoint homicides. However, mapping technologies offer even more robust data mining possibilities.

[Hypercities](#), a mapping project out of UCLA, connects time and geographical spaces. The site allows users to put historical layers on to maps, such as overlaying John Snow's nineteenth century work tracing the cholera epidemic on to a map of present-day London. A much more impressive undertaking on Hypercities was created by Xarene Eskandar, a graduate student at UCLA. She consolidated content on the Iranian election to create a geo-located reportage of more than 800 YouTube videos, Twitter feeds, Flickr photographs, and other forms of documentation. Hypercities says that, "The result is the largest, day-by-day, hour-by-hour, and sometimes even minute-by-minute web documentation of the election protests in Iran."

[FloatingSheep.org](#), a collaboration between the University of Kentucky and Oxford University, uses comparative maps to show places in the U.S. where bars outnumber grocery stores, which country creates the most web-based references to god around the globe, the geographical face of the abortion battle and, more recently, a map of Wikipedia that takes time into account. Using this time feature, Floating Sheep was able to point out the many biases in Wikipedia including the "lack of pre-16th century biographies in locations (Fertile Crescent, China, Indian subcontinent, etc.) with the longest histories of civilization." The time element was key in teasing out Wikipedia's focus on western cultures.

**Go to link:>**

<http://www.ojr.org/ojr/people/nonnydlp/201005/1851/>

## Cartographic Research

### Geographic Pattern Visualization may Predict Disease Spread

Disease statistics buried within patient records or detailed in newspaper clippings can be sorted with a new toolkit and organized to depict geographic patterns, allowing the discovery of trends that were previously overlooked. The GeoViz Toolkit combines text mining with geographical mapping, allowing users to search publically available data to identify and visualize data patterns for their own interests or concerns. The software allows someone with no programming experience to navigate the application, while also providing different components and analytical tools for experienced analysts.

"The use of interactive maps and graphs, combined with word search interfaces, can lead to greater insight into complex events such as the spread of Swine flu," said Frank Hardisty, research associate, Penn State GeoVISTA Center. "Potential applications range from research in public health — infectious disease dynamics, cancer etiology, surveillance and control — through analysis of socioeconomic and demographic data, to exploration of patterns of incidents related to terrorism or crime."

Many sources for disease and crime statistics — newspaper articles for example — are in a semi-structured format that does not clearly present the data in a table or graph, but rather buries it within the text of the document. To obtain high-quality, relevant information from these documents, researchers use "text analytics" or "text mining," allowing them to retrieve only applicable information, like the date and description of a disease-related death, from the flood of information typically included in a newspaper clipping.

"An example would be searching a database of H1N1 flu reports for 'child' or 'children' and seeing if there is spatial clustering in the relative frequency of those reports," Hardisty told attendees at the 2010 Association of American Geographers Annual Meeting in Washington, D.C.

**Go to link:>**

<http://www.scimag.com/news-DA-Geographic-Pattern-Visualization-may-Predict-Disease-Spread-042010.aspx>

### Cancer cases tracked on state maps

Cara Matthews • Gannett Albany Bureau • May 11, 2010

ALBANY — An interactive cancer-mapping system launched by the state Monday allows people to track incidences and types of cancer by small geographic areas and learn what environmental facilities are nearby that may have contributed to the problem.

This is the first time the state is providing the public with information about such small areas, and the first time an environmental database is being provided with cancer data, said Assemblyman Richard Brodsky, D-Greenburgh, Westchester County, the legislation's Assembly sponsor.

"The next step will be for the (health) department to do an analysis of anomalies so that we can put a lot of fears to rest, and where there is reason for further research, we know where to do that research," he said.

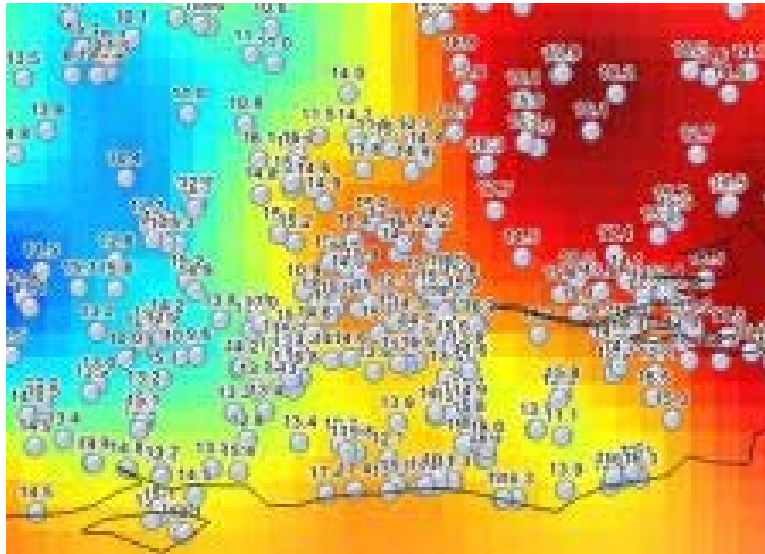
**Go to link:>**

<http://www.democratandchronicle.com/apps/pbcs.dll/article?AID=20105110324>

## Joining the dots to put pollution on the map

May 11, 2010

(PhysOrg.com) -- Air pollution monitors tell us a great deal about their immediate locations -- and not much about the wider area. To fill the gaps on the map, European researchers have developed new statistical tools for a web-enabled world.



Imagine another nuclear accident like Chernobyl. Across Europe, measurements show increased radioactivity, but it's not yet clear how much has been released or where it is coming from. One measuring station reports high radiation levels, yet 30km away, on the other side of a city, the readings are much lower. Should the authorities evacuate the city, and if so, where to?

European research in statistics has made it easier to answer questions like this, and many others relating to less dramatic forms of air and [water pollution](#). By providing new ways to turn a set of point measurements into a contour map that can be published on the web in real time, scientists hope to make existing environmental data more useful, reliable and democratic.

### Interpolating from points to areas

All sorts of environmental issues, from nuclear and chemical spills to groundwater pollution and traffic fumes, involve decisions based on measurements taken at a relatively small number of points, notes Edzer Pebesma of the University of Münster, Germany. Air quality monitoring stations, for instance, have become a common sight in Europe, but the high cost of setting them up and running them will always limit their numbers.

So how do you find the value of an environmental variable at a point on the map where there is no monitoring instrument? Statisticians call this process interpolation. Starting with a fixed number of measurements taken in defined places, the challenge is to create a contour map that shows what is happening between the measurement points, and to say how accurate we can expect these contours to be.

Pebesma heads the EU-funded INTAMAP project, which spent three years developing new [statistical methods](#) and software for interpolating environmental data. Though the mathematics involved are complex, the researchers took care to address real-world issues, Pebesma says. For instance, depending on how much time is available, the software decides whether it can use the most accurate interpolation techniques or must settle for less sophisticated models that are quicker to calculate.

**Go to link:>**

<http://www.physorg.com/news192804004.html>

## Conferences

### **3rd International Conference on cartography and GIS**

June 15-20 2010

Nessebar, Black Sea, BULGARIA

[www.cartography-gis.com](http://www.cartography-gis.com)

### **ISPRS Commission VI Cross-Border Education for Global Geo-Information,**

June 2-4, 2010.

Mid-Term Symposium

Enschede, Netherlands

<http://www.itc.nl/isprsc6/symposium2010/>

### **BCS Symposium 2010 - Call for papers**

June 9<sup>th</sup> – 11<sup>th</sup> 2010

British Cartographic Society Symposium "Talking With Maps".

Village Hotel and Conference Centre in Nottingham

<http://www.cartography.org.uk/default.asp?contentID=933>

### **GI\_Forum 2010**

July 6-9, 2010

Symposium and Exhibit

Applied GeoInformatics

Salzburg

**Learning with Geoinformation**

**Special Focus: Spatial Citizenship**

Symposium & Vocational Training

Within the framework of GI\_Forum 2010

July 7-9, 2010 – Salzburg, Austria

[www.gi-forum.org/learning](http://www.gi-forum.org/learning)

### **IGU Commission on Geographical Education – CGE Symposium -2010)**

July 8-10, 2010

Fatih University

Istanbul, Turkey.

<http://igucge2010.fatih.edu.tr/>

### **ESRI Business GIS Summit**

July 11-12, 2010

**San Diego, California**

Will bring business professionals and industry leaders together to discuss the key advantages of a geoenabled organization.

<http://www.esri.com/events/business/index.html>

### **Interdisciplinary CODATA Workshop on RISK Models and Applications**

**August 26/27, 2010**

**Berlin, Germany,**

[http://www.codata-germany.org/RMA\\_2010/](http://www.codata-germany.org/RMA_2010/)

### **Seventh European GIS Education Seminar**

September 9-12, 2010

Serres, Greece

A specialist meeting on GIS education in Europe

[www.eugises.eu](http://www.eugises.eu)

### **7th ICA Mountain Cartography Workshop**

Mountain Mapping and Geospatial Information Retrieval  
1-5 September 2010  
Borsa, Romania  
<http://www.mountaincartography.org/>

### **GeoCart'2010**

#### **ICA Symposium on Cartography for Australasia and Oceania**

1-4 September 2010  
Auckland, New Zealand  
The fifth National Cartographic Conference GeoCart'2010 and the first ICA Symposium on Cartography for Australasia and Oceania will convene in Auckland,.  
<http://www.cartography.org.nz/geocart2010/index.htm>

### **7th Symposium on LBS and TeleCartography**

20-22 September 2010  
Guangzhou, China.  
**Go to link >**  
<http://www.lbs2010.org/>

### **INTERGEO 2010**

5 to 7 October 2010  
The (geo) world will come together in Cologne.  
Around 475 companies from 30 countries will again open up new horizons at the world's leading fair for geodesy, geoinformation and land management. Today, 80 per cent of last year's exhibitors have already booked their trade fair participation  
<http://aktuell.kundeninformation.net/re?l=6mg15ol1u9khtcl1&req=anr%3D>

### **3rd International Symposium of the ICA Commission on the History of Cartography**

10-13 October 2010  
University of Texas in Arlington, USA  
The Symposium will be held in conjunction with the 7th Biennial Virginia Garrett Lectures on the History of Cartography (Friday, 8 October 2010) and the Fall Meeting of the Texas Map Society (Saturday, 9 October 2010);  
[www.icahistcarto.org](http://www.icahistcarto.org)

### **ICA Commission on National and Regional Atlases**

October 20-23, 2010  
Yogyakarta, Indonesia,.  
(1) Recent Directions in National Atlas Cartography  
and  
(2) National, Regional, City and School Atlases  
as Expressions and Carriers of Space-related Identity  
Organized by ICA Commission on National and Regional Atlases  
National Coordinating Agency for Survey and Mapping, Indonesia

### **AutoCarto 2010**

November 15-18, 2010  
Orlando, Florida  
Sponsored by the Cartography and Geographic Information Society (CaGIS), The 18<sup>th</sup> in the series, this international research symposium on computer-based cartography and GIScience will be held in conjunction with the American Society for Photogrammetry and Remote Sensing (ASPRS). The International Cartographic Association and the International Society for Photogrammetry and Remote Sensing (ISPRS) Technical Commission IV: Geodatabases and Digital Mapping will also hold a number of commission meetings at AutoCarto 2010.

The focus of this joint meeting is **Geospatial Data and Geovisualization for the Environments, Security, and Society**.

<http://www.cartogis.org/autocarto>

### **The Use of GIS and Remote Sensing for Sustainable Development**

29<sup>th</sup> Nov-03<sup>rd</sup> Dec, 2010

Tunis

We have the honour to invite you to participate in the events of **GEOTUNIS International Congress 2010** in its 5th Edition from 29 November to 03 December, **2010 in Tunisia** Centred under the theme "**The use of GIS and remote sensing for sustainable development**". A fifth **GeoTunis session** in front of distinguished scientific users of GIS and remote sensing for the most recent experiments and applications in scientific fields.

The congress will include 4 major scientific themes that address the various uses and applications of geographic information systems as well as numerous practical workshops supervised by the major international institutions active in the field.

**Go to link:>**

[www.geotunis.org](http://www.geotunis.org)

### **25th International Cartographic Conference**

3–11 July 2011

Paris, France

Open to researchers, engineers, students, data producers and software suppliers, the ICC 2011 will be held from 4th to 8th July 2011 at the Palais des Congrès in Paris, with simultaneous proceedings in eight meeting rooms. This conference will consider the most wide-ranging issues involving cartography and geomatics. In addition to oral presentations, sessions will be organized for the presentation of work in the form of poster displays.

**Go to link >**

<http://www.icc2011.fr/>

*NOTE: If you are involved in a workshop, symposium or conference related to cartography please send me brief details for the newsletter.*

## **Odd Spot**

### **Former cartographer enjoys crafting ready-to-wear artwork**

by Jordan Attebury | Staff Writer

Thursday, April 29, 2010

Gazette.Net – Maryland Community Newspapers Online

When he began making art-to-wear pieces, Russ Little admitted to feeling like a "sellout." But soon, Little decided there were worse ways to have people view his combination of cloth, quilts fiber art.



Little spent a decade as a mapmaker for the National Geographic Society in Washington, D.C., before becoming an IT project manager.

"Maps help the lost people find their way in the world or visualize a problem in a way that they can understand it," Little said. "To some extent, even though the artwork I do is abstract, it's doing something similar. It's explaining something. I don't always know what it's explaining, to be honest. But there's something there."

Greenbelt Arts Assistant Barbara Davis describes Little's work as "phenomenal."

**Go to link:>**

[http://www.gazette.net/stories/04292010/hyatnew185958\\_32574.php](http://www.gazette.net/stories/04292010/hyatnew185958_32574.php)

## **Artsy Cartography**

by [Tara Morgan](#)



[click to enlarge](#)

While Google Earth 5.0 can take you deep into the ocean to explore the Mariana Trench and way out to the moon to poke around at Apollo landing sites, there's one thing it can't do: show you the location of all the public art in Idaho.

Luckily, **Idaho Commission on the Arts** has shouldered that task.

ICA used Google Earth to create an interactive online map pinpointing hundreds of pieces of public art scattered all across Idaho. You can browse by artist name, location, media or word, and each listing features the piece's location, a detailed description of the work and, oftentimes, a photo.

From Robert Berks' free-standing bronze bust at the Hemingway Memorial in Ketchum to Jerry Beebe's untitled wood sculpture of raccoons on a tree stump in Coeur d'Alene's City Park, you can now explore all the little treasures that inspire passersby throughout the Gem State at [arts.idaho.gov](http://arts.idaho.gov).

**Go to link:>**

<http://www.boiseweekly.com/boise/artsy-cartography/Content?oid=1597265>

## **“Cartographers for Social Equality”**

The “Cartographers for Social Equality” segment from the “Somebody’s Going to Emergency, Somebody’s Going to Jail” episode of The West Wing.

**Go to link:>**

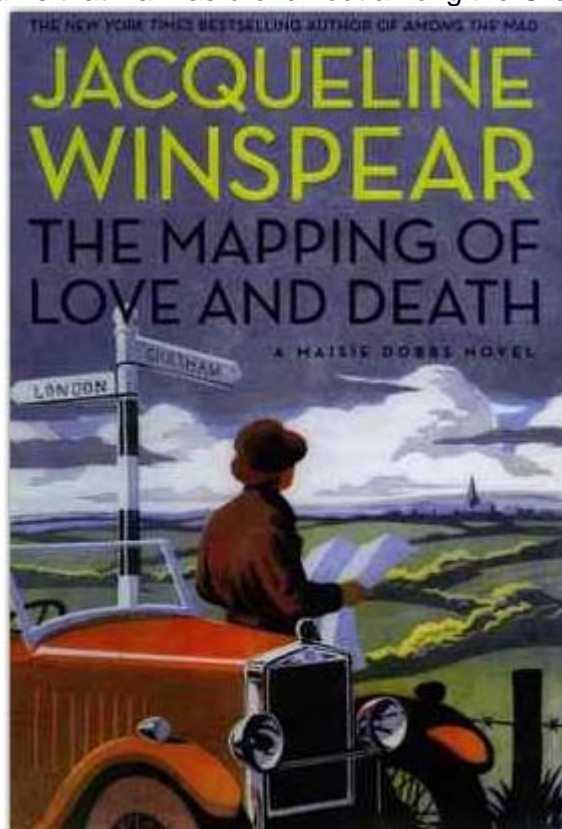
<http://vodpod.com/watch/2880331-the-cartographers-for-social-equality-segment-from->

## Armchair reading

### The Mapping of Love and Death

A *Maisie Dobbs* Novel  
By Jacqueline Winspear  
Harper. 338 pp. \$25.99

In August 1914, Michael Clifton, a young cartographer, dips into the substantial inheritance left him by his grandfather and buys a parcel of land in [California's](#) Santa Ynez Valley. Shortly thereafter, he learns that war has broken out among the Great Powers of [Europe](#).



**Go to link:>**

[http://www.philly.com/inquirer/gallery/20100425\\_Mystery\\_\\_heartbreak\\_in\\_a\\_quainter\\_time.html](http://www.philly.com/inquirer/gallery/20100425_Mystery__heartbreak_in_a_quainter_time.html)

## Reflective Pieces

### THE CARTOGRAPHER

posted by **Chet** at [11:06 AM](#) UTC  
Saturday, April 03, 2010  
Science Musings Blog

Morning. He closes the door and steps into the street. The sun gathers its watercolors behind the trees, behind the horizon. The birds are waking, testing their voices *a capella*. He turns into the woods, the path that leads down to the Queset Brook, to the plank bridge. He stumbles over roots and stones.

The day is a sheet of blank paper, crisp and white.

Didn't he spend yesterday filling it up, mapping the light and shadows, the byways, the flora and fauna, the little exhilarations and tiny fears? Didn't he sketch a picture of the world? Didn't he compile what the poet Adrienne Rich called *An Atlas of the Difficult World*?



And now the sheet is blank again, an intimidating expanse of emptiness, and he has to take up the pen, the T-square, the French curves, all the tools of the cartographer's art, sketching the path, following its meanderings, noting its twists and turns, so that tomorrow he will know where he has been, what he has seen, what he says that he knows. All day he will catalog the latitudes and longitudes of a life, one life, just one.

By the end of the day he will hold an atlas in his hands, heavy with notations, topographies, the contour lines of a soul. He will fall into bed exhausted, the atlas at his side.

And tomorrow he must do it all over again, trying to remember what he had thought he knew, where he thought he had been, trying to see afresh what can only be seen once.

**Go to link:>**

[http://blog.sciencemusings.com/2010/04/cartographer.html?utm\\_source=feedburner&utm\\_medium=feed&utm\\_campaign=Feed:+ScienceMusingsBlog+\(Science+Musings+Blog\)](http://blog.sciencemusings.com/2010/04/cartographer.html?utm_source=feedburner&utm_medium=feed&utm_campaign=Feed:+ScienceMusingsBlog+(Science+Musings+Blog))

**Wild Bill Bunge**

Axis Maps cartographer Zachary Forest Johnson wrote this loving essay-length biography of William Bunge, radical geographer. I loved this excerpt on frozen moments in time, and the necessity of choosing an instant when mapping:

Much of Bunge's cartographic theory is contained in the foreword to the book. Speaking of a historical farm map created for the book (portion above): Maps attempt to integrate over time, that is, maps assume an average span of time. This means that nothing that moves is mapped, and therefore property is inherently preferred over humans. In order to restore truth to the map it is necessary to achieve a fiction of accuracy through an assumption, namely that the map is drawn at an exact instant of time. In this case, the time is June 20, 1915 at 2 p.m. on a sunny day. This fiction freezes the men and horses on the roads, the strawberry pickers in the fields, as well as the crops in rotation and the animals in pasture. This restores life to the dead map of property.

And this, on the relationship between communication technique (old-school graphic design equipment!), choice of study area, and [communication](#) efficacy:

Learning how to make a clean line, lay a rip-a-tone pattern, or design a map with the right Combination of point, area, and line symbols did not seem to be critical knowledge to members of a survival culture. But the school decentralization study made sense. The next three weeks both saved and came to define the potential of the Expedition. The decentralization report - rich in graphs and maps created by Bunge and the Expedition's students - was adopted by a community group and forced the Board of Education to respond to charges that its school districting plans were illegal.

**Go to link:>**

<http://mike.teczno.com/notes/instapaper-slag-heap-III.html>

## Feature Map & Images



[www.stumbleupon.com/stumbler/arcaNeMpyre/](http://www.stumbleupon.com/stumbler/arcaNeMpyre/)

## Guilin Rice Terrace



<http://www.google.com.au/imgres?imgurl=http://www.travel-china.net/imagesen/guilin/guilin-rice-terrace11.jpg&imgrefurl=http://www.travel-china.net/pictures-guilin-rice->

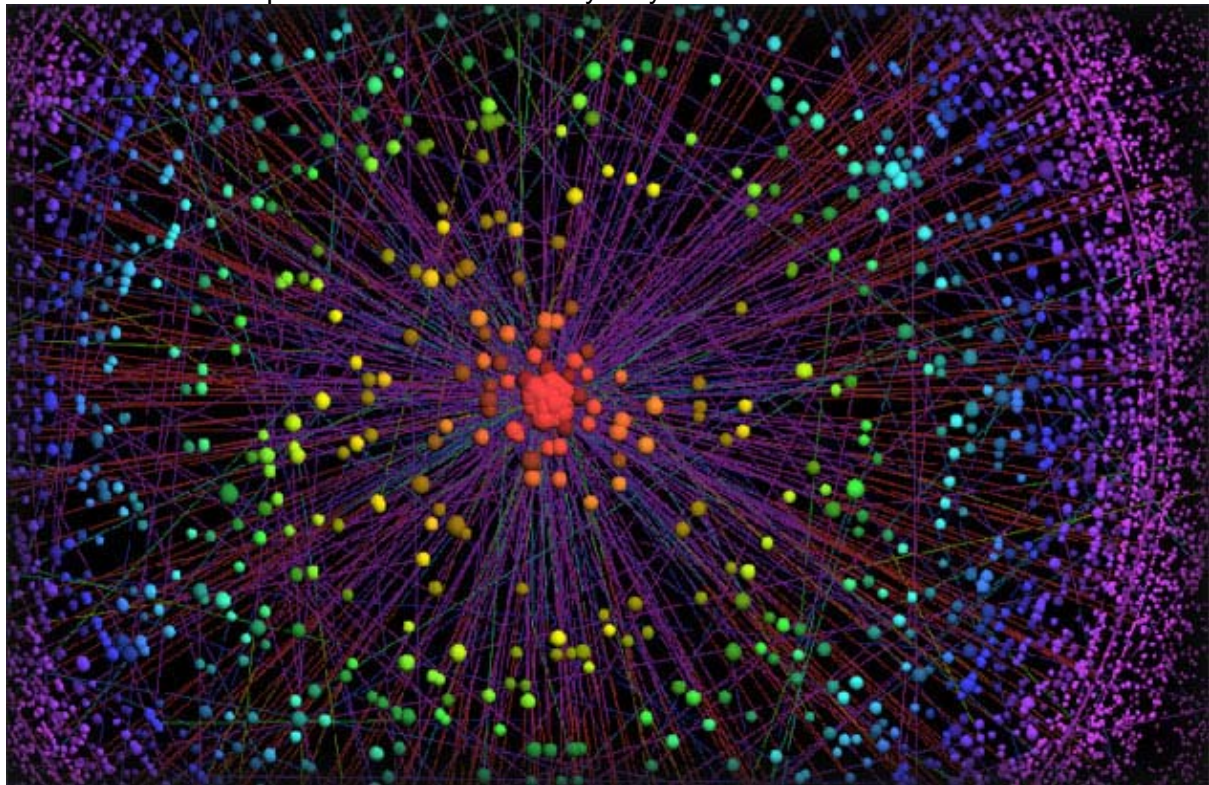
terrace.html&h=342&w=588&sz=96&tbnid=VykluAF2rPneHM:&tbnh=79&tbnw=135&prev=/images%3Fq%3DGuilin%2BRice%2BTerrace%2B-%2BUnique%2BChina%2BPictures&usg=\_\_KuptQTdD7rBIGBEAbR5-geeMF\_Y=&ei=PBvgS-SuPMugkQWbtuXHCA&sa=X&oi=image\_result&resnum=2&ct=image&ved=0CAsQ9QEwAQ

## Map of the Internet

*An explosion of colour that gives shape to cyberspace*

This explosion of colour is the most complete picture of the Internet ever produced. It shows how networks connect in virtual space, allowing data to flow and be accessed by web users across the world.

At the centre of this image is a cluster of 100 or so round balls – the nucleus point of the map. These nodes are the biggest and the most well-connected data networks in the Internet – and include the likes of Google, Global Crossing and Deutsche Telekom. Being at the centre of the image means they are heavily relied on by the other nodes in the picture, which diminish in importance the further away they are.



[http://www.bbc.co.uk/bbcfour/beautyofmaps/digital\\_worlds-map2.shtml](http://www.bbc.co.uk/bbcfour/beautyofmaps/digital_worlds-map2.shtml)