



MARCH 2010

An occasional electronic newsletter for members of the Commission.

If you have any brief items of interest to fellow CET members then please email them to david.fraser@rmit.edu.au for eCET.

If you have more substantial articles please send them to Igor Drecki at i.drecki@auckland.ac.nz for the ICA newsletter.

=====

"Geography is just physics slowed down, with a couple of trees stuck in it." Terry Pratchett

"The map is only useful from the moment when the reader can locate the represented area in his own mental map." Jacques Bertin

ICA - Commission on Education and Training Workshops 2010

I am pleased to announce that both the Viet Nam and Indonesian government have accepted an invitation from the Commission to run cartography workshops in 2010.

Viet Nam workshop

The workshop will run over two weeks with two presenters per week. A commitment is required of presenters to fund their own return airfare to Ho Chi Min City while all on-ground expenses are covered by the Vietnamese government. The workshop is planned over two weeks from 19th to 30th July. Topics covered will include cartographic information systems, Internet mapping, 3D maps and Geovisualization. The Ho Chi Minh City Association of Geomatics (HAG) is a host organisation in collaboration with the HCMC Institute of Resources Geography (HCMIRG). Mr. Lam Dao Nguyen from the GIS & Remote Sensing Research Center (GIRS), Vietnamese Academy of Science and Technology (VAST) has been instrumental in organising the funding and logistics for the workshop. The HCMC University of Technology (HCMUT) is also involved in the organisation of the workshop.

Indonesia workshop

The workshop in Indonesia is coming together well and an initial program has been agreed to. The workshop will also run over two weeks with two presenters per week. A commitment is required of presenters to fund their own return airfare to Jakarta, while all on-ground expenses are covered by the Indonesian government. The 5th IGTE symposium will be held on 27-30 July in Jakarta and two of our presenters will also present at this event. Topics covered will include computer assisted cartography, GIS visualization, Web-cartography and Geospatial education using ICT. Mr. Sukendra Martha, President of the Indonesian Association for Cartography and employee of the National Coordinating Agency for Surveys and Mapping, (BAKOSURTANAL) is a member of the Commission on Education and Training.

Cartographic Education

GIS Education - 10 Colleges Offering Suggested Programs in GIS

Written by GISuser

01 March 2010

The GISuser LinkedIn Group is a popular social resource with more than 6,000 participating GIS professionals and growing strong. Recently, a discussion thread has been quite active, resulting in dozens of comments from members. Members have been commenting and providing tips and leads on their favorite, suggested GIS programs at Colleges and Universities around the Globe. The following are just 10 of the suggested programs - stay tuned for more to come.

Go to link:

<http://www.gisuser.com/content/view/19862/28/>

Give Me a Map Sandwich

Posted on March 16, 2010, 8:45 am, by James Fee, under [GIS](#).

Headings

Manage Your Content – Integrate Your Content

The “Map Sandwich”

A Window into the Future

Give Me Some of that Good Data-as-a-Feature

Bottom Line

[James Fee GIS Blog](#)

Geospatial Technology, Web Mapping and Spatial Services

Go to link:

http://www.spatiallyadjusted.com/2010/03/16/give-me-a-map-sandwich/?utm_source=feedburner&utm_medium=feed&utm_campaign=Feed%3A+spatiallyadjusted+%28James+Fee+GIS+Blog%29

Cartographic futures



http://etc.usf.edu/clipart/73500/73575/73575_old_chartist.htm

A “chatter” of quotes

The future of cartography lies in its' persisting ability to change and adapt itself to the requirements of the map-user. The future of cartography is in the hands of students, who keep themselves informed about new technologies, including remote sensing methods, mapping software and image retrieval by satellites.maps for electronic media will still benefit from good cartographic designI don't see paper maps (or paper books) going away for a long time.You can open one instantly -no waiting to boot up - almost anywhere and pass the time,".)

<http://www.cartotalk.com/index.php?s=881dd8f21e2017d293b354bb072807c3&showtopic=2053&st=15&p=11450&#entry11450>

“.....almost any big infrastructure project is going to need underlying maps and it depends on how those organisations are going to use that mapping information to the extent of the

skilled people they need.” Dean Howell, Managing director of GIS Jobs Australia in the article “Too few are caught mapping”, The Weekend Australian, January 23-24, 2010

It seems very unlikely that our profession will disappear because it is superfluous. Geographic information must be updated continuously to ensure that the data in maps, gps-navigators and geographic information systems is of high quality that is up-to-date, comprehensive, precise and correctly classified. Unless these quality standards are met, the information is useless and may be harmful.

<http://www.maanmittauslaitos.fi/en/default.asp?id=0&docid=5234>

While paper maps aren't going to die, its a limited medium and all the fun stuff is going on in the digital sphere.

<http://www.cloudsourced.com/2009/02/23/the-future-of-cartography-reprise/>

..... if finished OS maps are made available free of charge for commercial exploitation, it could severely damage the independent map suppliers and in effect nationalise the mapping industry. Careful consultation is now required.

<http://www.guardian.co.uk/technology/2009/nov/21/ordnance-survey-independent-map-makers>

Over the last several decades geographical information processing has become increasingly “scientific” and “objective” in nature and, as a result, has lost its ability to deal with qualitative information and both the artistic and emotional aspects of human existence.

<http://www.springerlink.com/content/g614433744782847/>

For far too long people have been searching in vain for maps that fill some small niche but do not exist. Now anyone can make their own map and share it with the world with tools like Google Maps, Google Earth, Platial, etc. Need a specialized biking map of your hometown or map of Chinese restaurants? Now odds are much greater that it will be available.

<http://www.geographictravels.com/2007/07/future-of-cartography-dynamic-custom.html>

So what will be the role of the cartographer in that future era? The cartographer will be an information broker, able to indicate what datasets are relevant for a specific spatial decision support task, as well as a graphic designer able to visualise the relevant spatial data in such a way that her clients are able to grasp the information.

http://www.uacg.bg/UACEG_site/sem_geo/04%20Ormelng.htm

Today, a technological renaissance is spurring the creation of new maps that represent breakthroughs in our understanding of biology, neuroscience, ecology and our relationship with the physical world. For the first time we're able to map not just physical geographies, but genomes, neural pathways, emotions, social networks – even the global movement of ideas.

<http://en.oreilly.com/where2009/public/schedule/detail/7215>

Like traditional cartography, the new maps combine science, technical skill, and aesthetics to display information spatially, but the information they display is radically different. And the map itself -- dynamic, thematic, changeable -- has become an instrument of discovery.

<http://www.esquire.com/features/best-and-brightest-2008/best-new-cartographers-1208>

Coming to Terms with the Industry

Cartography :- the art, science, practice, technologies (and passion) of map making.

Cartography (1973) – 'The art, science and technology of making maps, together with their study as scientific documents and works of art. In this context maps may be regarded as including all types of maps, charts and sections, three dimensional models and globes representing the Earth or any celestial body at any scale.' (ICA)

Cartography (1984) "an information transfer process that is centred about a spatial database which can be considered, in itself, a multifaceted model of geographic reality. Such a spatial database then serves as the central core of an entire sequence of cartographic processes, receiving various data inputs and dispensing various types of information products." (Guptill & Starr)

Cartography (1989) - Cartography is not just an art/craft; neither is it just a technology or system for constructing artefacts. It is also a science which seeks to abstract **general** truths and principles so as to deduce, prescribe or predict the outcome of design methods. (Visvalingam, M)

Cartographer (2009) a person who designs, prepares and revises maps, charts, plans, three-dimensional models and spatial information databases, often using computer-based techniques, and applying principles from science, mathematics and graphic design.
(myfuture - <http://www.myfuture.edu.au/services/default.asp?FunctionID=5050&ASCO=212311A>)

Map (2009) – portrayal of geographic information as a digital image file suitable for display on a computer screen [ISO 19128]

"Practice of **Land Surveying**" means the practice of that branch of the profession of engineering which involves the location, relocation, establishment, reestablishment or retracement of any property line or boundary of any parcel of land or any road right-of-way, easement or alignment; the use of principles of land surveying, determination of the position of any monument or reference point which marks a property line boundary, or corner setting, resetting or replacing any such monument or individual point including the writing of deed descriptions; managing or conducting as managers, proprietors or agent any place of business from which land surveying work is solicited, performed or practiced;
<http://www.psls.org/info/manualpractice.htm>

Geomatics is really all about location - measuring it, mapping it and modelling it - because location is the common link between many things in our world.
<http://user.gs.rmit.edu.au/maths/geomatics.pdf>

Geomatic engineering is the study of the science and technologies of 3D measurement, mapping and visualisation. It is one of the fastest growing IT industries in the world today.
<http://www.geom.unimelb.edu.au/future/>

Geoinformatics encompasses the acquisition and storing of geospatial data, the modelling and presentation of spatial information, geoscientific analyses and spatial planning, and the development of algorithms and geospatial database systems.
<http://www.informaworld.com/smpp/section?content=a790359606&fulltext=713240928>

Geographic Information Science (GI Science) may be defined as the basic research field that seeks to redefine geographic concepts and their use in the context of geographic information systems (GIS).
<http://www.ncgia.buffalo.edu/giscidefn.html>

GIScience is an inherently interdisciplinary research field. It uses theories from and contributes to theory production primarily in geography, but also has links with technical sciences such as computer science, cartography, and surveying engineering, with application-oriented disciplines such as landscape architecture or regional planning, and finally also with social and cultural sciences such as psychology or linguistics.

<http://www.benszm.net/WS/Weibel.pdf>

Geoscience is any science, such as geology, geophysics, geochemistry, or geodesy, concerned with the earth; an earth science

<http://www.thefreedictionary.com/geoscience>

Geospatial Science, is the discipline that concerns the creation, capture, management, analysis and distribution of spatial data. It incorporates modern measurement and information science, and the management of spatial data in useable form.

<http://www.acsis.com.au/Publications/PracRisk/Chapters/CHAPTERONE.pdf>

Spatial Science - A study of human geography which considers space to be a fundamental factor in the way society operates and the way individual people behave. Geography was seen as a science of spatial distribution, that is to say, of locational analysis.

<http://www.answers.com/topic/spatial-science>

Spatial Information industry – acquires, integrates, manages, analyses, maps, distributes and uses geographic, temporal and spatial information and knowledge. The industry includes basic and applied research, technology development, education and applications to address the planning, decision-making and operational needs of people and organisations of all types.

http://www.agta.asn.au/news/other/spatial_industry_report.pdf

Geospatial industry – “includes all the practitioners, vendors, consultants, service providers, researchers, standards bodies, and industry organizations that enable and support the use of the technology for the betterment of society”

GITA past president, Dan Bowditch

Geo-information sector works with location specific (x,y,z) information or services. A geo-information employee is defined as an employee having as a main task (> 50%) working with geoinformation products and services.

<http://ijsdir.jrc.ec.europa.eu/index.php/ijsdir/article/viewFile/148/190>

Geographic Information Systems Professional (GISP)

A GISP is a certified Geographic Information Systems (GIS) Professional who has met the minimum standards for ethical conduct and professional practice as established by the GIS Certification Institute (GISCI)

<http://www.gisci.org/>

Geo-Information Service Infrastructure (GSI) is used to refer to a type of geo-information provision system from which specialised information products and services can be obtained by exploiting the elementary services (resources, processes and data) of a set of collaborating geo-service providers.

<http://eprints.eemcs.utwente.nl/7149/>

Geoinformation is the result of combining geodata with expert knowledge. This can be expressed in the short formula "GI = GD + K" (Geoinformation = Geodata + Knowledge). Knowledge can be integrated as clearly defined procedures for data processing (fusion, merge, aggregation or filtering of data) or in form of mathematic or physical models describing dynamic processes.

www.uneca.org/codi/.../GI%20in%20support%20of%20decentralization.doc

Spatial Information (also known as geographic information) is any information that can be geographically referenced, i.e. describing a location or any information that can be linked to a location.

http://www.anzlic.org.au/glossary_terms.html

Therefore:

Geographic Information (also known as spatial information) is any information that can be geographically referenced, i.e. describing a location or any information that can be linked to a location.

Geographic Information Systems (GIS) is a system of hardware and software used for storage, retrieval, mapping, and analysis of geographic data. Practitioners also regard the total GIS as including the operating personnel and the data that go into the system.

<http://www.nwgis.com/gisdefn.htm>

Why GIS is spatial science? This question has not been answered yet.

http://wiki.answers.com/Q/Why_gis_is_spatial_science&src=ansTT

Committee on Support for Thinking Spatially

2006. *Learning to Think Spatially: GIS as a Support System in the K-12 Curriculum*, Washington DC., National Academies Press.

Compiled by David Fraser, Wednesday, 24 March 2010

Cartography in the media

National Geographic puts McGill hydrographer on the map

Mar. 18, 2010

National Geographic puts McGill hydrographer on the map Bernhard Lehner's one-of-a-kind global rivers map to be included in April issue of magazine

Bernhard Lehner, Dept. of Geography at McGill University, is a hydrographer whose work has literally just gone global. Fusing the fields of hydrology and cartography, a one-of-a-kind map of the world's rivers he created will be included as a pull-out in the April 2010 "Fresh Water" Issue of National Geographic

Go to link:

http://www.mcgill.ca/newsroom/news/item/?item_id=115553

Filipino wins Google Map Maker contest

Posted March 2nd, 2010

thePinoy

A 23-year-old "citizen cartographer" from the University of the Philippines bested 700 other contestants to become the winner of the first Google Map Maker Global Competition. Wayne Dell Manuel won a US\$50,000 donation from UNICEF for the Philippines after adding more than 1,500 qualifying map features and made hundreds of moderations in Google Map Maker. His edits, which were primarily of local public schools, were judged to be

the most numerous and accurate entries in the contest.



Go to link:

<http://thepinoy.net/?p=4735>

People's Map Wins Silver Award

Issue Date: , Posted On: 3/15/2010

Geoplace.com

The People's Map of London received a Silver Award in the Best Digital Product category at the recent International Map Trade Association (IMTA) Gala Awards Dinner. The annual awards ceremony, part of a two day conference held in Bayonne, France, attracted entries from all over Europe, the Middle East and Africa. The awards were presented by Allen Carroll, President of Cartography for National Geographic, whilst other guests came from as far as Australia and the Dominican Republic to see the latest mapping developments.


Over 40 entries were received for the three different award categories being awarded, Best Wall Map, Best Book or Atlas and Best Digital Product, with an overall winner going forward to the World Best Map at the IMTA Global event later this year.

The People's Map is an exciting new mapping concept which enables any individual or organisation to create and maintain maps of Britain by 'drawing' features like roads, land use and point of interests over aerial photography, using simple online editing tools. <http://peoplesmap.com/>

Go to link:

<http://www.geoplace.com/ME2/dirmod.asp?sid=&nm=&type=MultiPublishing&mod=PublishingTitles&mid=13B2F0D0AFA04476A2ACC02ED28A405F&tier=4&id=8A4B1752A37746EFA336F2353CCB2ABE>

March 9, 1454: This Man Is a Continent ... or Two

- By [Randy Alfred](#) 
- March 9, 2010 |
- 12:00 am |



1454: Amerigo Vespucci is born in Florence, Italy. He'll give his name to two continents.

[Vespucci, the son of a notary](#), went to work for the Medici banking house. They dispatched him as an agent to Seville, Spain, where he arranged the fitting out of ships and the trading of their cargoes.

He seems to have been in Seville when another Italian in Spain, Christopher Columbus, returned to the nearby port of Cadiz from his first journey to the West Indies. Vespucci later [helped Columbus prepare his vessels](#) for the Genoese mariner's second and third voyages of discovery.

Not content to sit on the sidelines when fame and fortune were in the offing, Vespucci arranged for and outfitted his own expeditions to seek a short trade route to India. Vespucci set sail in 1499 and explored the northern coast of what we now call South America. Because he was looking for India, he called the local waters there the "Gulf of the Ganges." On his second voyage, Vespucci made a major breakthrough. He followed the eastern coast of the new land south, and south and farther south. He was in fact off the coast of Patagonia, within 400 miles of Tierra del Fuego.

The coast was like nothing previously known to Europeans. Vespucci was [convinced it wasn't Asia](#) at all, but a new world entirely.

Vespucci made one or perhaps two additional voyages to what some were soon calling the New World. A popular account of Vespucci's journeys appeared in a pamphlet, "The Four Voyages of Amerigo." It received widespread circulation, thanks to the growth of a relatively new technology, the [printing press](#).

Martin Waldseemüller, a modernist-humanist German clergyman and cartographer, reprinted "The Four Voyages of Amerigo" in 1507 with his own "Cosmographic Introduction." He opined:

I see no reason why anyone should justly object to calling this part ... America, after Amerigo [Vespucci], its discoverer, a man of great ability.

Waldseemüller included a map of the the new lands, on which the [name "America" makes its earliest appearance](#).

The map was popular. The name caught on, and it stuck.

Go to link:

<http://www.wired.com/thisdayintech/2010/03/0309amerigo-vespucci-born#ixzz0j3TdrZ0W>

Mapping a problem

By Kath Gannaway
Star News

23rd March 2010 02:01:04 AM

Buxton cartographer Robin Rishworth says confusing information on maps and signs is not only unprofessional, it could prove dangerous. 44673

A BUXTON map-maker says local knowledge, experience and job opportunities in fire-affected townships are being ignored by city-centric government departments.

Robin Rishworth spoke out last week after DSE's mapping arm, Spatial Information Infrastructure (SII) put out a map of Marysville that Mr Rishworth says is riddled with errors and inaccuracies.

DSE says however that SII data is constantly being updated and improved but is dependent on feedback from state and local government agencies, and the public to update maps.

Go to link:

<http://www.starnewsgroup.com.au/story/86926>

Maps and manuscripts illustrate an old worldview

By [Cora Lewis](#)

Staff Reporter

Yale Daily News

Published Tuesday, March 23, 2010

Napoleon Bonaparte famously had his men re-draw the world's map to make France larger, but he wasn't the only historic figure who tried to alter the public's perceptions with cartography.



Yale Map Department, Sterling Memorial Library

In a map by Heinrich Bünting, Asia magically takes the shape of the mythological winged horse Pegasus.

Go to link:

<http://www.yaledailynews.com/news/art-news/2010/03/23/maps-and-manuscripts-illustrate-old-worldview/>

See the world with new eyes Businesses are tuning in to augmented reality

BRAD HOWARTH

March 16, 2010

Source: [The Sydney Morning Herald](#)



New dimension information on the phone screen is overlaid on an image from the phone's camera.

For years we have navigated our way through unfamiliar locations by looking at guidebooks and matching their contents to what we see around us. What if we could look at both at once?

This is the promise of augmented reality (AR), which uses computers and mobile phones to overlay additional information and images on what is visible to the naked eye.

AR uses the GPS and compass in modern smartphones, such as the iPhone and those based on Google's Android technology, to determine where you are and the direction you are facing.

Go to link:

<http://www.theage.com.au/technology/enterprise/see-the-world-with-new-eyes-20100315-q9wt.html>

Wolfram Alpha answer engine best of show at SXSW

GLENN CHAPMAN

March 16, 2010 - 3:35AM

© 2010 [AP DIGITAL](#)

A new Wolfram Alpha search engine that delivers factual answers to online queries instead of links to Web pages won top honors late Sunday at the South By South West (SXSW) awards ceremony.

Wolfram Alpha was crowned "Best of Show" at the annual Web Awards that featured categories ranging from blogs, business and classic online services to mobile, game, and film innovations on the Internet.

"It is gratifying to be recognized," Wolfram Alpha's freshly-hired managing director Barak Berkowitz told AFP after accepting the award.

"We expect Wolfram Alpha will be ubiquitous all over the web, everywhere, the same way today Google Maps are."

Like online mapping services, Wolfram Alpha provides factual answers to online queries.

Go to link:

<http://news.theage.com.au/breaking-news-technology/wolfram-alpha-answer-engine-best-of-show-at-sxsw-20100316-q9zk.html>

Google adds bike lane with latest mapping feature

March 10, 2010

Google is adding a bike lane with its latest online mapping option.

Google spent the past six months tweaking its mapping service so it could recommend routes that would steer bicyclists away from big hills and heavily congested streets.

<http://news.theage.com.au/breaking-news-technology/google-adds-bike-lane-with-latest-mapping-feature-20100310-pysz.html>

[Streetsblog](#) talked with [Google Engineer Scott Shawcroft](#) about [Google's new Bike Map feature](#) and their plans for enhancing it.

It gives bicycle directions that take into account the grade of a road, traffic volumes, bike lanes, bike trails, and recommended routes. The map de-emphasizes routes not friendly for cyclists.



The new mapping software includes an overlay of bicycle routes based on priority bicycle streets and paths [in the 150 cities where Google is debuting the service](#).

Go to link:

<http://www.dailywireless.org/2010/03/15/bikes-and-bart-get-mapped/>

Ice Deposits Found At Moon's North Pole

Posted on: Monday, 1 March 2010, 15:55 CST

Using data from a NASA radar that flew aboard India's Chandrayaan-1 spacecraft, scientists have detected ice deposits near the moon's north pole. NASA's Mini-SAR instrument, a lightweight, synthetic aperture radar, found more than 40 small craters with water ice. The craters range in size from 1 to 9 miles (2 to 15 km) in diameter. Although the total amount of ice depends on its thickness in each crater, it's estimated there could be at least 1.3 million pounds (600 million metric tons) of water ice.

"The emerging picture from the multiple measurements and resulting data of the instruments on lunar missions indicates that water creation, migration, deposition and retention are occurring on the moon," said Paul Spudis, principal investigator of the Mini-SAR experiment at the Lunar and Planetary Institute in Houston. "The new discoveries show the moon is an even more interesting and attractive scientific, exploration and operational destination than people had previously thought."



Go to link:

http://www.redorbit.com/news/space/1829878/ice_deposits_found_at_moons_north_pole/index.html

iPhone and Android: How One Mashup Does Both With Google Maps API V3

Andres Ferrate, March 2nd, 2010



Given the increasing popularity of mobile devices such as the iPhone and Android devices (both of which include full browsers), it should come as no surprise that developers have begun to leverage the various APIs out there to provide [mobile mashups](#) that can be implemented without targeting a specific platform or SDK.



The [Google Geo Developers Blog](#) has a recent post that highlights how Missouri State University is using the [Google Maps API V3](#) to provide a platform-independent [mobile map mashup](#). According to Chad Killingsworth, Assistant Director of Web & New Media at the university, one of the goals of this mashup is to enable the university to roll out updates to the mashup without having to update multiple SDKs, especially for small changes:

So instead of writing the maps application using the SDK of each phone platform, I wrapped my v3 Maps API site into a WebView inside a stub application. Now all the work spent on the web version automatically applies to the “native” application and my users never even know the difference.

Go to link:

<http://blog.programmableweb.com/2010/03/02/iphone-and-andriod-how-one-mashup-does-both-with-google-maps-api-v3/>

Chilean quake shifted Earth's axis: NASA scientist

March 2, 2010 - 2:33PM

The Age

The earthquake that killed more than 700 people in Chile probably shifted the Earth's axis and shortened the day, a National Aeronautics and Space Administration scientist said.

Earthquakes can involve shifting hundreds of kilometres of rock by several metres, changing the distribution of mass on the planet. This affects the Earth's rotation, said Richard Gross, a geophysicist at NASA's Jet Propulsion Laboratory in Pasadena, California, who uses a computer model to calculate the effects.

"The length of the day should have got shorter by 1.26 microseconds [millionths of a second]," Gross, said in an emailed reply to questions.

"The axis about which the Earth's mass is balanced should have moved by 2.7 milliarcseconds [about eight centimetres]."

The changes can be modelled, though they're difficult to detect, given their small size, Gross said.

Go to link:

<http://www.theage.com.au/technology/sci-tech/chilean-quake-shifted-earths-axis-nasa-scientist-20100302-pege.html?autostart=1>

Northwest at risk of earthquake like one in Chile

By ALICIA CHANG

AP SCIENCE WRITER

March 07, 2010 12:00 AM

LOS ANGELES — The disaster in Chile has brought new attention to an undersea fault along the Pacific Northwest capable of producing the same type of mega earthquake and inflicting heavy damage on bustling cities like Seattle, Portland and Vancouver.

The fault has been dormant for more than 300 years, but when it awakens — tomorrow or decades from now — the consequences could be devastating.

The last rupture unleashed the largest known quake to hit the Lower 48 — a magnitude-9 that sent tsunami waves crashing into Japanese coastal villages.

Recent computer simulations of a hypothetical magnitude-9 quake found that shaking could last 2 to 5 minutes — strong enough to potentially cause poorly constructed buildings from British Columbia to Northern California to collapse and severely damaging highways and bridges.

Go to link:

<http://www.southcoasttoday.com/apps/pbcs.dll/article?AID=/20100307/NEWS02/3070349>

Property mistaken as flood plain

The adjustments mean homeowners must buy insurance.

By KEVIN CANFIELD World Staff Writer

Published: 3/7/2010 2:20 AM

Last Modified: 3/7/2010 5:28 AM

"What a mess."

That's how Jeff Boyd of Tulsa describes the costly process of getting his home out of the Federal Emergency Management Agency's flood plain map.

Go to link:

http://www.tulsaworld.com/news/article.aspx?subjectid=16&articleid=20100307_16_A18_Whatam400127

New 'Hearing' Maps Are Real Conversation Starters

Posted on: Friday, 5 March 2010, 10:05 CST

Innovative sound-mapping software based on human hearing has been developed to help architects design out unwanted noise.

The new software generates audibility maps of proposed room designs.

The EPSRC (Engineering and Physical Sciences Research Council) project has been developed at Cardiff University.

These maps show hotspots where conversations would not be intelligible if the room were busy. Architects can then adjust their designs to reduce reverberation until the hotspots are eliminated and audibility is maximized.

Software already exists to help architects predict how a building will perform acoustically for an audience in places like theatres and concert halls. This new software is specifically designed to improve the acoustic design of indoor spaces where a large number of people meet, chat and interact. It could be used for business as well as social purposes, for example, in designing open-plan offices, cafes and reception areas.

Go to link:

http://www.redorbit.com/news/technology/1832523/new_hearing_maps_are_real_conversation_starters/index.html

337-year-old book to be reprinted

Ananya Dutta

The Hindu

Tuesday, Feb 09, 2010

KOLKATA: Collectors of rare books will soon be able to lay their hands on a facsimile copy of 17th century book *India and Persia* by **British cartographer John Ogilvie**. It is being reprinted by the authorities of the Asiatic Society here.

Published in 1673, the book, which is a part of the Library of the Asiatic Society, is the only known copy in India, said Nirbed Ray, publication secretary of the Society.

While the condition of the original had deteriorated owing to effects of age, the reprint would probably be available in March, nearly 337 years after it was first printed.

The book has unique artwork and maps from India and Persia. It provided the merchants of the East India Company valuable information on India and the Gangetic plains, Mr. Ray said.

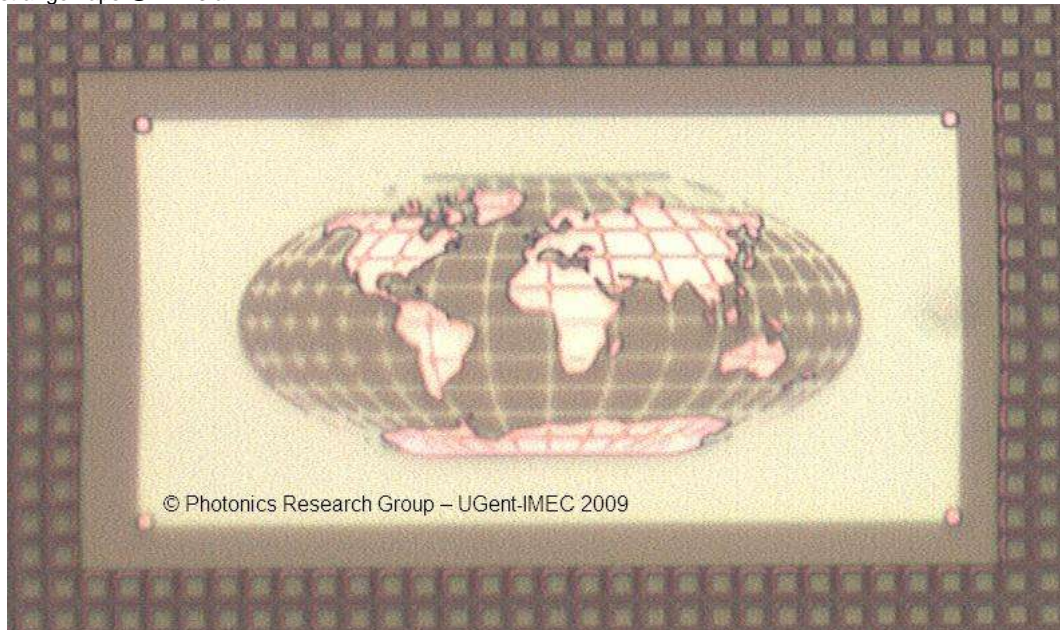
Go to link:

<http://www.thehindu.com/2010/02/09/stories/2010020951362000.htm>

432 – Earth on a Tera Scale

January 17, 2010

strangemaps @ 12:13 am



Take the length of the equator on this map, double that distance and you have the width of a human hair. For this is the world's smallest world map, with the 40,000 kilometre-long equator reduced to a mere 40 micrometres. The smallest features on the map, corresponding to 100 kilometres, are about 100 nanometres wide.

The map was created by the Photonics Research Group at Ghent University in Belgium, and embedded in an optical silicon chip. Miniaturisation on this scale (one trillionth [*], to be exact) will enable optical technology with a million times more components than in present-day, glass-based photonics, and opens the door to nanophotonic applications in consumer electronics, medical imaging, and telecommunication.

Go to link:

http://images.google.com.au/imgres?imgurl=http://strangemaps.files.wordpress.com/2009/01/vladstudio_typographic_world_map_1024x600.jpg&imgrefurl=http://strangemaps.wordpress.com/&usg=__l1ByMOmpkFaA-QcULZb9vpqSuvl=&h=600&w=1024&sz=180&hl=en&start=29&um=1&tbnid=JjEVe7GS_3J8qM:&tbnh=88&tbnw=150&prev=/images%3Fq%3Dcrazy%2Bworld%2Bmap%26ndsp%3D18%26hl%3Den%26client%3Dfirefox-a%26rls%3Dorg.mozilla:en-GB:official%26sa%3DN%26start%3D18%26um%3D1

Cartographic Resources

Peeplo maps



Go to link:

<http://maps.peeplo.com/>

Some cool new stuff in Bing Maps

March 5, 4:52 PM · [San Jose Gadgets Examiner](#) · Robert Mullins

Microsoft unveiled an upgrade to its Bing Maps service this week, part of the new Bing Search engine launched last year, and there's some gee-whiz stuff to enjoy. The new features were revealed Thursday in a Web cast of a Microsoft event at the University of Washington campus in Seattle. Microsoft CEO Steve Ballmer talked about the software company's cloud computing strategy but also shared the stage with Blaise Aguera y Arcas, the chief software architect for Bing Maps.

"What we're really trying to do here instead is to think about mapping as a trellis or a surface on which you bind every conceivable kind of information that relates to space, and to time as well," Aguera y Arcas explained.

The New Bing Maps [offers 21 applications](#).

Go to link:

http://www.examiner.com/x-6470-San-Jose-Gadgets-Examiner~y2010m3d5-Some-cool-new-stuff-in-Bing-Maps?cid=channel-rss-Gadgets_and_Tech

GMaps Pedometer, Now With Optional G

[Adam DuVander](#), March 5th, 2010



The Free Wiki World Map

An early influential Google Maps mashup now gives users the chance to change mapping imagery. The [GMaps Pedometer](#) (our [GMaps Pedometer](#)

[mashup profile](#)) has six different tile options, the most recent of which is [OpenStreetMap](#), the free editable map of the world.

The feature was [added in August](#) and made the change so users could edit the maps:

If you see an error in a map on the OSM overlay, go to the main page for the Open Street Map project, and you will find a map much like the one on this page. That map will have an “edit” tab, and there is where you can make changes to the map. The learning curve for making changes is non-trivial, but your work will benefit everyone who uses the map your neighborhood after you. Changes you make will take a week or so to show up in the OSM overlay on [www.gmap-pedometer.com](#).

The default imagery is still the standard Google Map, but those with a penchant for openness can click the “OSM” button next to the other choices:



And if you'd like to check out similar sites, read our guide [6 Fun Sites to Track Your Trails](#).

Go to link:

<http://blog.programmableweb.com/2010/03/05/gmaps-pedometer-now-with-optional-g/>

The Spy Kite



The Spy kite is a wind flyer that has a digital camera mounted on the frame and is capable of taking photographs from air. The Spy Kite is made up of fiber glass and comes with a wireless remote control that enables you to take photographs while your own feet are on the ground.

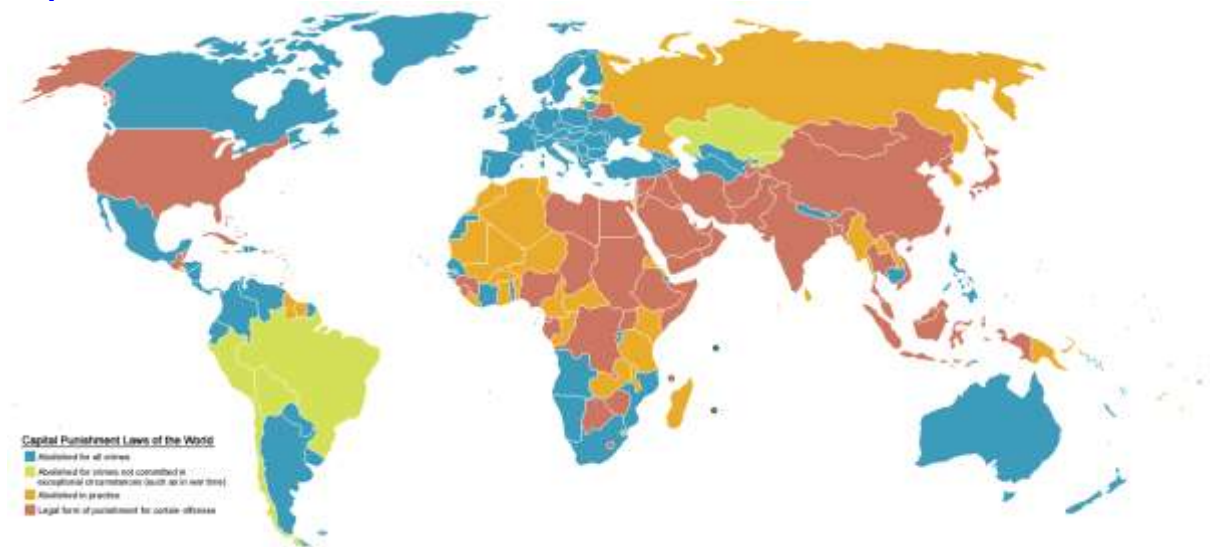
This spy gadget can take photographs from upto 80 feet above from ground.

Go to link:

<http://www.walyou.com/blog/2008/11/18/cool-spy-gadgets/>

Feature Maps

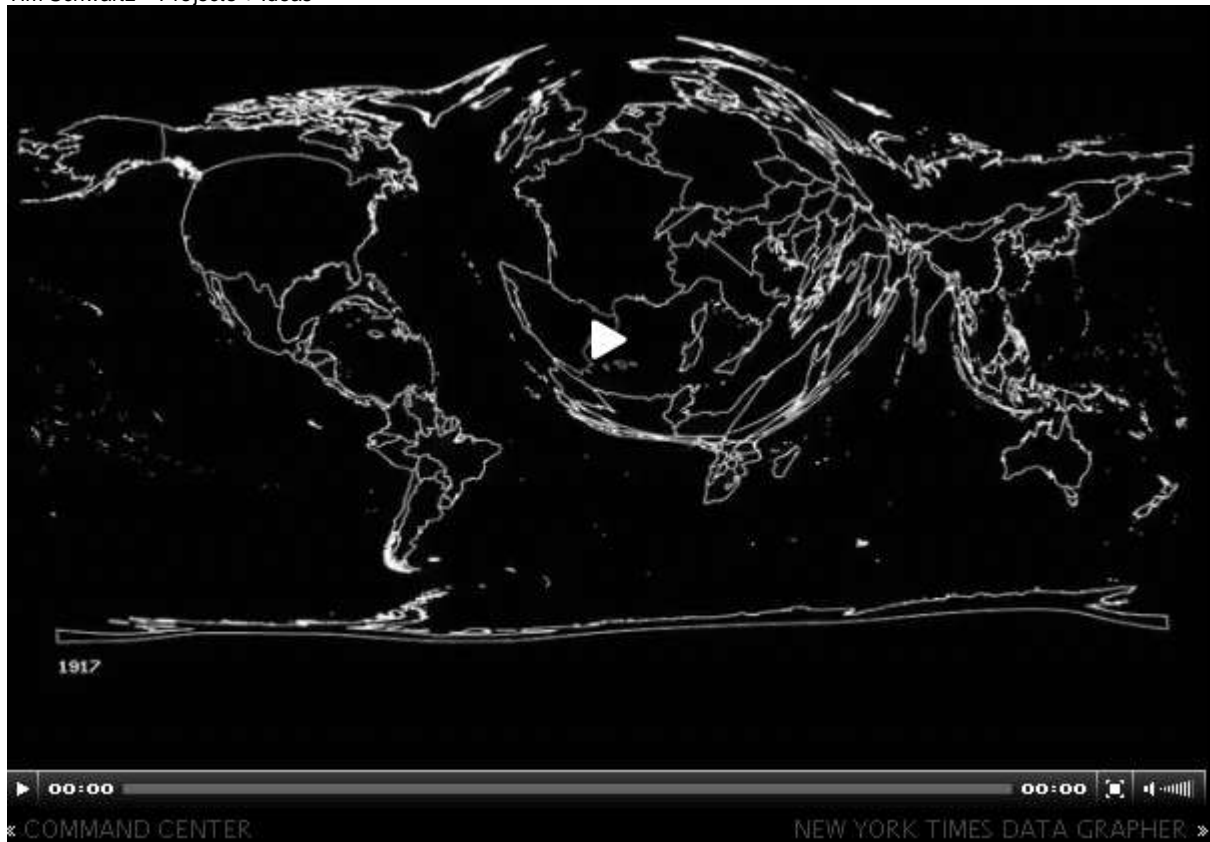
Capital Punishment Laws of the World



http://upload.wikimedia.org/wikipedia/commons/c/cb/Death_Penalty_World_Map.png

Geohistoriography, 2009

Tim Schwartz – Projects + Ideas



This show captures how America views the world as seen through the lens of the American media. All data was collected from the New York Times, namely the number of articles written about a certain country for each year.



The two wall drawings are representations of the 2008 state of America's view of the world. In one piece countries were morphed and expanded or contracted if they were written about more or less than average. In the pyramid piece, countries were organized in a ranked fashion depending on this same data.

The animation shows how America's perspective changed over the last 150 years.

<http://www.timschwartz.org/geohistoriography/>

Old maps point to Dokdo and the East Sea

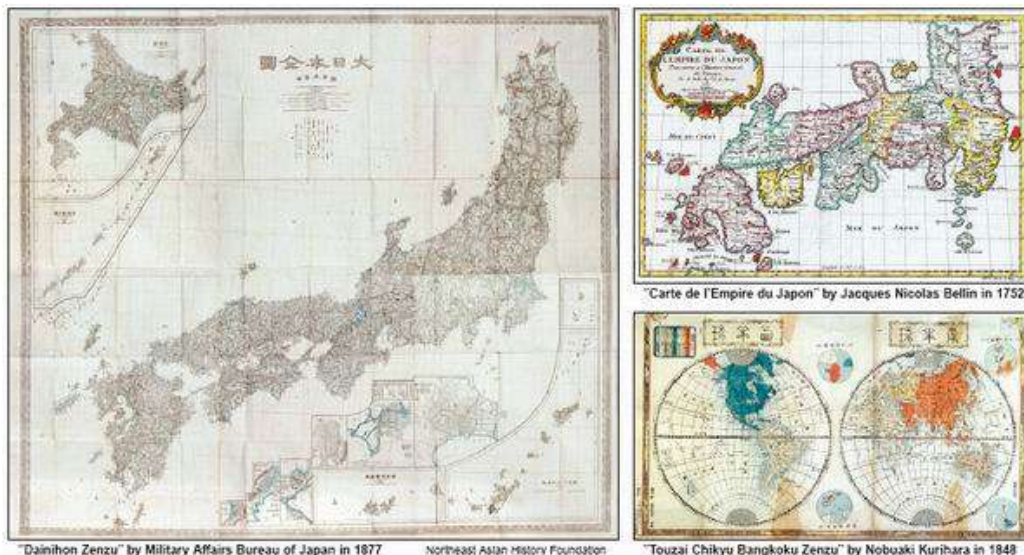
Old maps serve as crucial evidence to prove whether a territory belongs to a certain country and not another

Park Min-young

Asia News Network

[The Korea Herald](#)

Publication Date : 03-03-2010



Old maps serve as crucial evidence to prove whether a territory belongs to a certain country and not another.

The Northeast Asian History Foundation is currently hosting the exhibition 'East Sea and Dokdo in Old Maps' at the National Assembly Library in Yeouido, southwestern Seoul.

A total of 40 old maps featuring the East Sea and Dokdo are on display at the exhibition.

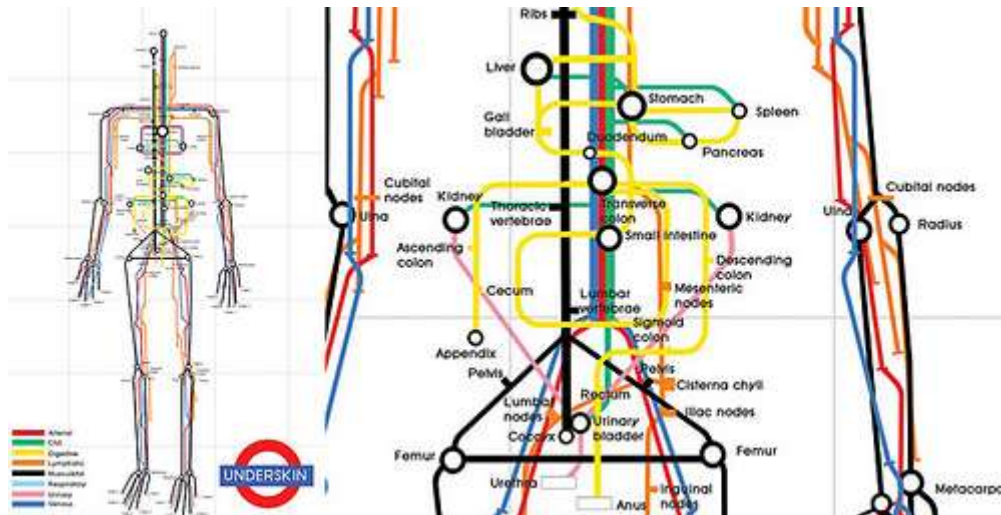
Dated between 1531 and 1929, the majority of the maps are in fact from Japan, which has claimed sovereignty over Dokdo and the designation of the sea east of the Korean Peninsula, despite their own maps saying otherwise. The remaining maps have been drawn up by Westerners or Koreans.

<http://www.asianewsnet.net/home/news.php?id=10489&sec=10>

Human Body as a Tube Map

Friday, March 05, 2010

It *might* be easier to imagine the workings of our body if it were mapped out like the London Underground map. With "*Under Skin*" (you can see what's she's done there), Dutch designer & illustrator, [Sam Loman](#) has charted the interchanges in our body to various "lines" on the map.



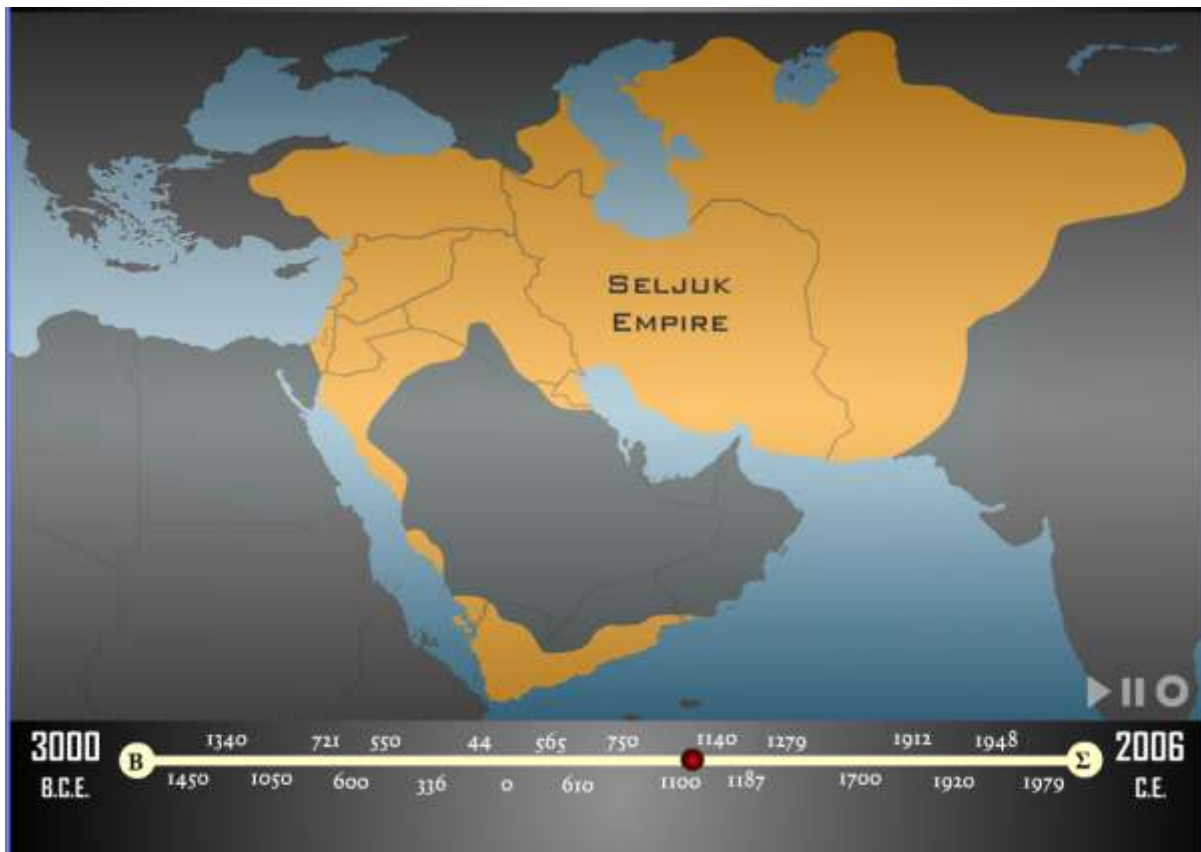
If you look at the [actual size](#) (via [Vizworld](#)), you can see the full beauty of her mix of design, science & cartography. There's a nice touch with Sam giving the copyright to *Transport for Body*.

<http://london-underground.blogspot.com/2010/03/human-body-as-tube-map.html>

Imperial History of the Middle East

Who has conquered the Middle East over the course of world events?

See 5000 years of history in 90 seconds



<http://www.mapsofwar.com/images/EMPIRE17.swf>

Out of this World

Seeing is believing

PERRY VLAHOS

January 25, 2010

IT'S not often that a 400th anniversary is celebrated but this month marks such a commemoration. Astronomically, it was monumental; our perception of the universe and our place in it was altered forever.

News reached Galileo in northern Italy during 1609 of a new device originating in the Netherlands, for making faraway things appear closer. The word "telescope" would not be coined until years later. He set out to make his own and with his scientific and mathematical background even improved on the design. At first he saw its application in military and maritime use but in time his curiosity led him to point it to the heavens and, soon after nightfall on January 7, 1610, he took aim at Jupiter.



Jupiter and its four largest moons, known as the Galilean satellites. From top to bottom, the moons shown are Io, Europa, Ganymede and Callisto. *Photo: Reuters*

Go to link:

<http://www.smh.com.au/technology/sci-tech/seeing-is-believing-20100120-mk8e.html>

Conferences

2010 ESRI Asia-Pacific User Conference

March 3-5, 2010

Australia

<http://www.esriaustralia.com.au/esri/5106.html>

ANZMapS 2010 Conference –

April 7-9,

Adelaide.

“Mapping Climate: an Environment for Change”.

The Australian and New Zealand Map Society Inc.

State Library of South Australia, North Terrace

<http://www.anzmaps.org/docs/img-731164235-0001.pdf>

Workshop of ICA Commission on Use and User Issues

13 April 2010

London, UK

http://www.univie.ac.at/cartography/karto/project/ica_user/ica_user_wiki/index.php?title=News_%26_upcoming_events#Workshop_on_Methods_and_Techniques.C2.A0of_Use.2C_User_and_Usability_Research_in_Geo-information_Processing_and_Dissemination_Tuesday_13_April_2010_at_University_College_London

Geospatial Visual Analytics: Focus on Time

11 May 2010

Guimarães, Portugal

<http://geoanalytics.net/ica/>

UN-SPIDER Regional Workshop Building upon

Regional Space-based Solutions for Disaster Management and Emergency

Response for Africa to take place from 25 to 28 May 2010 in Addis

Ababa, Ethiopia.

<http://www.un-spider.org/workshop-addis-2010>

3rd International Conference on cartography and GIS

June 15-20 2010

Nessebar, Black Sea, BULGARIA

www.cartography-gis.com

ISPRS Commission VI Cross-Border Education for Global Geo-Information,

June 2-4, 2010.

Mid-Term Symposium

Enschede, Netherlands

<http://www.itc.nl/isprsc6/symposium2010/>

BCS Symposium 2010 - Call for papers

June 9th – 11th 2010

British Cartographic Society Symposium "Talking With Maps".

Village Hotel and Conference Centre in Nottingham

<http://www.cartography.org.uk/default.asp?contentID=933>

GI_Forum 2010

July 6-9, 2010

Symposium and Exhibit

Applied GeoInformatics

Salzburg

Learning with Geoinformation

Special Focus: Spatial Citizenship

Symposium & Vocational Training

Within the framework of GI_Forum 2010

July 7-9, 2010 – Salzburg, Austria

www.gi-forum.org/learning

IGU Commission on Geographical Education – CGE Symposium -2010)

July 8-10, 2010

Fatih University

Istanbul, Turkey.

<http://igucge2010.fatih.edu.tr/>

ESRI Business GIS Summit

July 11-12, 2010

San Diego, California

Will bring business professionals and industry leaders together to discuss the key advantages of a geoenabled organization.

<http://www.esri.com/events/business/index.html>

Interdisciplinary CODATA Workshop on RISK Models and Applications

August 26/27, 2010

Berlin, Germany,

http://www.codata-germany.org/RMA_2010/

Seventh European GIS Education Seminar

September 9-12, 2010

Serres, Greece

A specialist meeting on GIS education in Europe

www.eugises.eu

7th ICA Mountain Cartography Workshop

Mountain Mapping and Geospatial Information Retrieval

1-5 September 2010

Borsa, Romania

<http://www.mountaincartography.org/>

GeoCart'2010

ICA Symposium on Cartography for Australasia and Oceania

1-4 September 2010

Auckland, New Zealand

The fifth National Cartographic Conference GeoCart'2010 and the first ICA Symposium on Cartography for Australasia and Oceania will convene in Auckland,.

<http://www.cartography.org.nz/geocart2010/index.htm>

7th Symposium on LBS and TeleCartography

20-22 September 2010

Guangzhou, China.

Go to link >

<http://www.lbs2010.org/>

3rd International Symposium of the ICA Commission on the History of Cartography

10-13 October 2010

University of Texas in Arlington, USA

The Symposium will be held in conjunction with the 7th Biennial Virginia Garrett Lectures on the History of Cartography (Friday, 8 October 2010) and the Fall Meeting of the Texas Map Society (Saturday, 9 October 2010);

www.ichistcarto.org

AutoCarto 2010

November 15-18, 2010

Orlando, Florida

Sponsored by the Cartography and Geographic Information Society (CaGIS), The 18th in the series, this international research symposium on computer-based cartography and GIScience will be held in conjunction with the American Society for Photogrammetry and Remote Sensing (ASPRS). The International Cartographic Association and the International Society for Photogrammetry and Remote Sensing (ISPRS) Technical Commission IV: Geodatabases and Digital Mapping will also hold a number of commission meetings at AutoCarto 2010.

The focus of this joint meeting is **Geospatial Data and Geovisualization for the Environments, Security, and Society**.

<http://www.cartogis.org/autocarto>

25th International Cartographic Conference

3–11 July 2011

Paris, France

Open to researchers, engineers, students, data producers and software suppliers, the ICC 2011 will be held from 4th to 8th July 2011 at the Palais des Congrès in Paris, with simultaneous proceedings in eight meeting rooms. This conference will consider the most wide-ranging issues involving cartography and geomatics. In addition to oral presentations, sessions will be organized for the presentation of work in the form of poster displays.

Go to link:

<http://www.icc2011.fr/>

NOTE: If you are involved in a workshop, symposium or conference related to cartography please send me brief details for the newsletter.

Odd Spot

Cartography Cardigan

If you like the abundance of cardigans that are hitting the racks right now, but florals and sparkles don't fit your style, the [Cartography Cardigan](#) (\$98) might be just what you're looking for. It's got just the right intellectual touch to give you that sultry librarian vibe.



Go to link:

http://www.outblush.com/women/fashion/sweaters/cartography-cardigan-/?utm_source=feedburner&utm_medium=feed&utm_campaign=Feed%3A+outblush+%28Outblush%29