

International Cartographic Association
Association Cartographique Internationale



Commission on Education and Training

June 2010 Newsletter

An occasional electronic newsletter from the Commission.

If you have any brief items of interest then please email them to
david.fraser@rmit.edu.au for eCET.

If you have more substantial articles please send them to Igor Drecki at
i.drecki@auckland.ac.nz for the ICA newsletter.

"M is for Maps

The Internet increased the presence of maps in my thinking. It's become easier to make maps, to change them, and also to work on them collaboratively and collectively and share them (e.g. Google Maps and Google Earth). After the focus on social networks of the last couple of years, I have come to see the focus on location as a key dimension." HANS ULRICH OBRIST, Curator, Serpentine Gallery, London; Editor: A Brief History of Curating; Formulas for Now
http://www.edge.org/q2010/q10_print.html#responses

Genesis of the Commission on Education & Training

Education in Cartography

(Report of Commission I of the International Cartographic Association)

(The original text was published (in French) in the International Yearbook of Cartography (VII) for 1967, pp. 214-220.) (Translation by Mr. J.J. Ovington)

"Among the proposals submitted to the Executive Committee of the I.C.A. for creation of special Commissions, since 1962, a large number of requests have been made for the study of cartographer's training in view of the shortage of qualified staff in various countries and the growing needs for diverse types of mapping. Brigadier D.E. O. Thackwell, elected as chairman, tabled a motion in this context to the second General Assembly of the I.C.A. in London in 1964, which unanimously decided to set up a special Commission. On the proposal of Professor Eduard Imhof, then president of I.C.A., chief geographical engineer S. de Brommer was elected president of Commission 1 on 28th July, 1964; the nomination of five regular members and 11 corresponding members was subsequently approved in Edinburgh."

Education – Viewpoints

On the Future of the Paid Cartographer

Daniel Huffman
March 14, 2010
Geography 970

So, an Australian blogger was asking me a few questions about cartography the other day — including a number about where I see cartography fitting into the digital world where “anyone” can make a map and distribute it almost at not cost. In answering her questions, it’s been the first time I’ve had to really engage with some of the big questions that no one can answer: Who will make maps in the future? Will anyone buy static maps? Will the quality of maps decline? etc. Certainly the field is in a degree of chaos, and we’re not sure where everything will settle. And some people, such as myself, are concerned. So, I would like to give my opinion on the question of the future of paid professional cartography, hopefully prompting a little discussion and perhaps sounding a positive note.

My thesis is thus: The changes wrought by digital technology and our very nascent steps toward “democratization” will lead to an **increased demand** for trained cartographers.

Go to link:>

<http://geog970.wordpress.com/2010/03/14/on-the-future-of-the-paid-cartographer/>

Changing The Way We Teach

GARY MARCUS

Cognitive Scientist; Author, *Kluge: The Haphazard Evolution of the Human Mind*

I am not sure the Internet has changed the way we think so much as the way we act. Information has become cheap, and spend more time on-line than in libraries, but there's been no biological evolution: human brains remain human brains, with a finite capacity for absorbing information and host of cognitive biases that impair our judgements. People have vastly more information at their disposal now, but it doesn't mean they know how to use that information wisely. Teenagers, for example, often gauge the reliability of a Website by how slick a site is, rather than on the nature of the site's sources.

My suggestion? Let us use the Internet as an impetus for completely rebooting our educational system, reorienting it from its current but antiquated 18th century emphasis on memorization — pointless in the age of Wikipedia — to a more modern emphasis on critical thinking skills, on metacognition and decision-making. Instead of teaching kids mere facts we should be teaching children how to reason, reflect, plan, investigate and evaluate. If we can do that, then (and perhaps only then) we might truly change how people think.

Go to link:>

http://www.edge.org/q2010/q10_print.html#carrn

Of Knowledge, Content, Place and Space

GALIA SOLOMONOFF

Architect; Solomonoff Architecture Studio

The Internet is producing a fundamental alteration in the relationship between knowledge, content, place and space. If we consider the world as divided into two similarly populous halves: the ones born before 1980 and the ones born after 1980 — of course there are other important differences such as gender, race, class, ethnicity, geography, etc., yet I see the 1980 as significant in the shift and alteration in the relationship of knowledge, place and space, due to the use of the Internet.

Three examples/scenes:

Example/Scene 1:

I am responding to this question from Funes, a locality of 15,000 inhabitants in the core of the Argentine Pampas (country side). I am in what is called a "locutorio"; a place with eight fully equipped computers that charges \$0.20 dollars (twenty cents) for fifteen minutes of Internet use. Five other users are here. A woman in her 20's talking via Skype (with headphones) with her sister and niece in Spain, a 30+ man in a white shirt and tie scanning a resume, two teens playing a video with what I guess is a multi-placed or non-placed community. A man on a Facebook page posting photos of a baby and a trip and myself, a 42 year-old architect on vacation with an assignment due in two hours!

I am the elder here. I am the nonlocal here. Yet the computer helps me and corrects my spelling without asking anyone.

Example/Scene 2:

Years ago when I was an architectural student and wanted to know about, say, Guarino Guarini's importance as an architect, I would go two flights down the stairs at Avery Library, get a few cards, follow the numbered instructions on those index cards and find, two or four or seven feet worth of books in a shelf dedicated to the subject...then I would look at few cross referenced words in such cards, such as, "mannerist architecture", go another path in the same room, and identify another few feet of books on the subject. I would leaf through all the found books and get a vague, yet physical sense of how much there was to know about the subject matter.

Now I Google "Guarino Guarini", and in 0.45 seconds, gets 108,000 entries, and the first page reveals specific details: he was born on January 7, 1624, and lived until March 6, 1683, six images of cupolas, a Wikipedia, and Encyclopedia Britannica entry. My Google search is both very detailed yet not at all physical. I can't tell how much I like this person's personality or work. I can't decide if I want to flip through more entries.

Example/Scene 3:

I am in a car traveling from New York to Philadelphia. I have GPS but no maps. The GPS announces where to go and takes into account traffic and tolls. I trust the GPS, yet in my memory I wish to reconstruct a trip I took years ago with other friends. In that other trip I had a map, I entered the city from a bridge, the foreground was industrial and decrepit the background was vertical and contemporary...at least that is what I remember...was it so? I zoom out the GPS to see if the GPS map reveals an alternative entry route, a different way the city geography can be approached. Nothing in the GPS map looks like the space I remember. What happened? Is my memory of the place faulty or is the focus of the GPS too narrow?

The feeling I want to convey with these examples/scenes is how over time and with the advent of the internet our sense of orientation, space and place have changed, our sense of the details necessary to make decisions has changed. If decisions take into account the many ways in which information comes to us then the internet at this point privileges what we can see and read over many other aspects of knowledge and sensation. How much something weights, how does it feels, how stable it is. Are we, the ones that knew places before the internet, more able to navigate them now or less? Do we make better or worse decisions based on the content we take in? Do we have longer better rests in far away places or constant place-less-ness? How have image, space, place and content been altered to give us a sense of here and now?

Go to link:>

http://www.edge.org/q2010/q10_print.html#carm

Cartographic Opinion

East Sea/Sea of Japan, what is the problem?

A sea name, like any geographical place name, serves as a reference point. This is the reason why it is natural that a sea take the name frequently and commonly used by the inhabitants of the area.

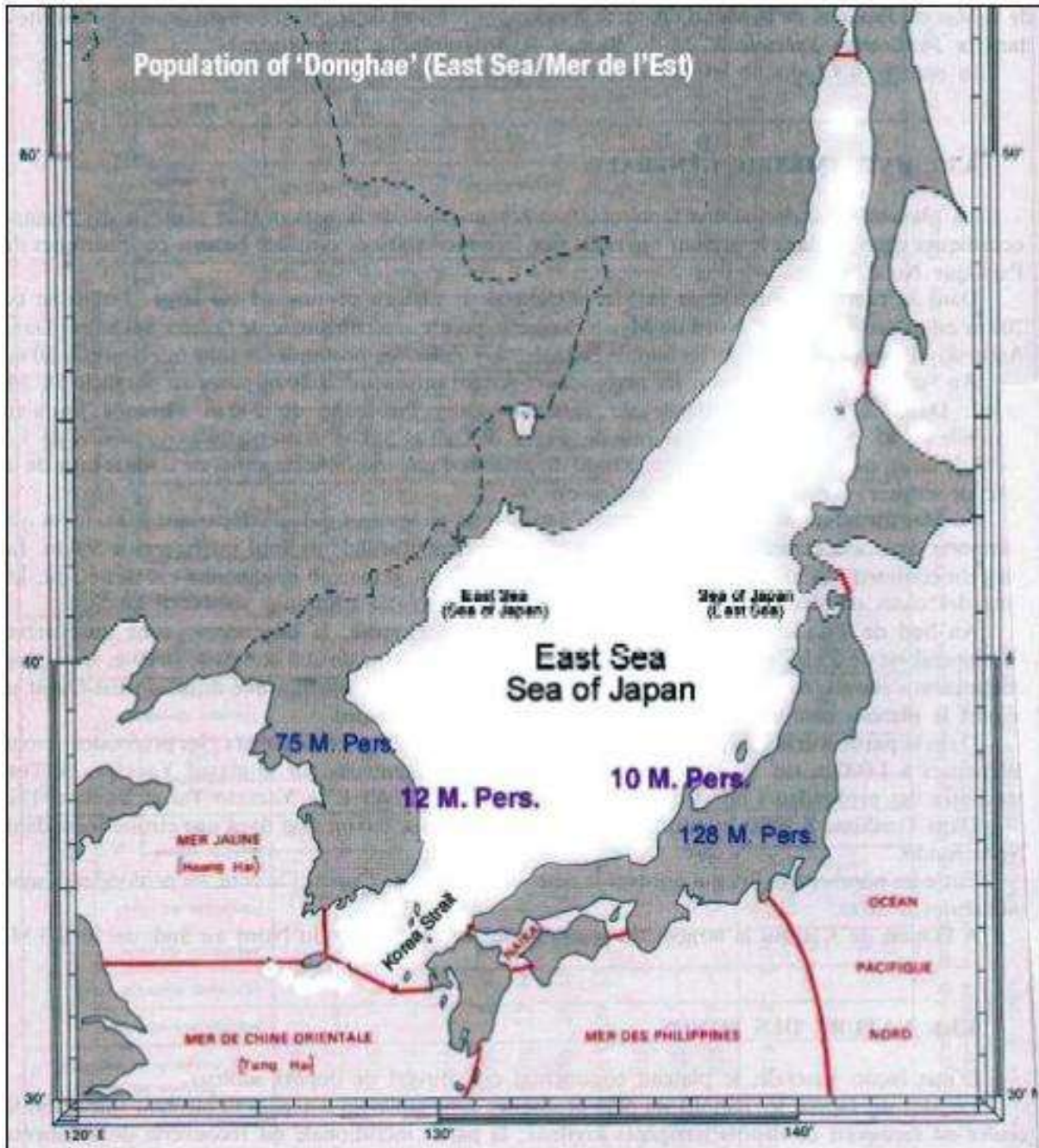
The question of naming the East Sea/ Sea of Japan is a major diplomatic issue between Korea and Japan, toward international communities (U.N., IHO), geographers, cartographers, editors, and mass media of the third countries.

Lee Ki-suk, former professor of geography at Seoul National University, former president of the East Sea Society and a member of the Academy of Sciences, said, "It is well-known that it took several centuries to correct a monumental collection of incorrect toponyms (geographical place names) in Ptolemy's Atlas. ... Everyone needs a place name to communicate with others, and then this place name becomes a key element for socio-economical activities, such as cartography, population census, pastimes and leisure

activities, postal services, trading activities, etc. ”

Yu Woo-ik former professor of geography at Seoul National University, Korean ambassador in China and general secretary of the International Geographical Congress, expressed the same observation in August 2000: “A toponym implies a name given to a place by those whom it belongs to or by those who make use of it, or else by those who are merely concerned.”

“Naming a place is the same as assuming possession over it. Or, trying to do so. A seemingly neutral toponym is actually a high-stakes issue, the stakes increase when there is a dispute over a geographical space among several parties,” wrote Philippe Pelletier, professor of geography at the Lumière University, in Lyon, France.



Go to link:>

<http://www.koreaherald.com/national/Detail.jsp?newsMLId=20100520000904>

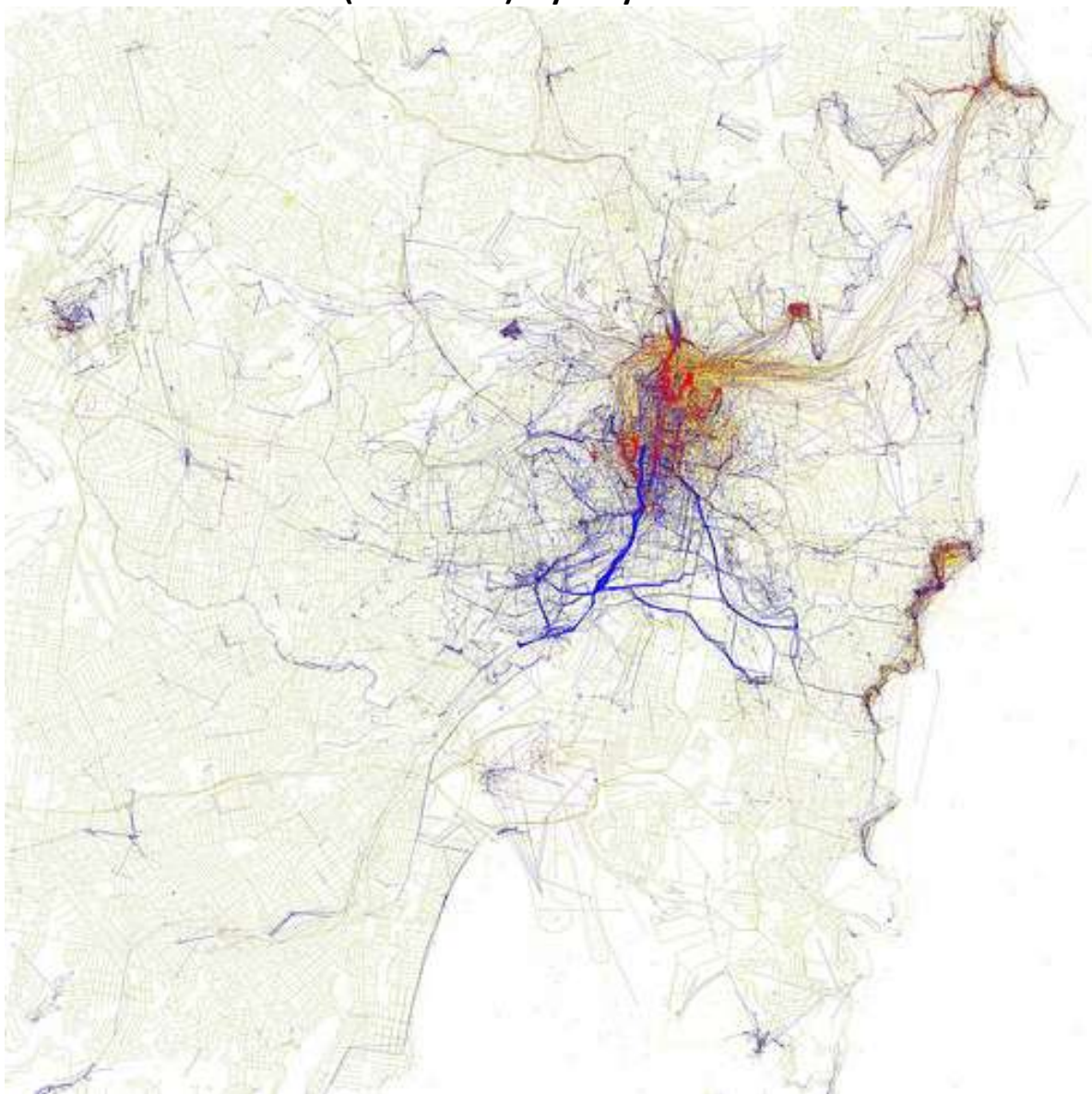
Cartography in the Media

Locals vs. Tourists: World Atlas of Photography

In an amazing feat of cartography, [Eric Fischer](#) turned Flickr's collective [geotagging](#) data [into](#) a world atlas of photo hot spots, by city. Better yet, [they're color-coded](#) — blue for locals (taking photos in each city for a month or more) and red for tourists (taking photos in the city for less than a month/locals of a different city). Above: NYC and SF.

Yellows, swirling suspiciously around Moscow's main streets and idling about Vegas outskirts, are the undetermined. Notice the various Brooklyn parts yet un-plagued by red and the curious tourist swarms around WTC. See the tourists huddled around NOLA's Burgundy and how only tourists take pictures of Vegas and Tokyo looks like a cluster of neurons.

Locals and Tourists #12 (GTWA #27): Sydney



Blue pictures are by locals. Red pictures are by tourists. Yellow pictures might be either

See them all [here](#),

Go to link:>

<http://animalnewyork.com/2010/06/locals-vs-tourists-world-atlas-of-photography/>

Modern experts plumb mysteries of medieval maps

Neely Tucker, Washington Post

Sunday, May 23, 2010

John Hessler, the senior cartographic librarian at the Library of Congress, slipped into the locked underground vaults of the library one morning last week.

Hessler approached a priceless 1559 portolan chart on the table before him, sketched in the hand of Mateo Prunes, the Majorcan mapmaker. The nautical map of the Mediterranean and Black seas is inked onto the skin of a single sheep.

It is a rare representative of one of the world's greatest and most enduring mysteries: Where and how did medieval mapmakers, apparently armed with no more than a compass, an hourglass and sets of sailing directions, develop stunningly accurate maps of southern Europe, the Black Sea and North African coastlines, as if they were looking down from a satellite.

Go to link:>

<http://www.sfgate.com/cgi-bin/article.cgi?f=/c/a/2010/05/23/MN3U1DJ4E3.DTL>

Big brother in the driver's seat

LOUISA HEARN

June 11, 2010 - 10:35AM



Computer generated driver behind the wheel of a motor car.

Car computers are officially big business, but will this new breed of supercars be too clever for their own good?

The threat of highway hacking, driver distraction and unlawful tracking are just a few of the concerns highlighted by researchers studying the next generation of computerised cars. According to IBM, a new family car contains more lines of code than a space shuttle and makes up 40 per cent of the value of a new vehicle. Once they start communicating with other vehicles and external traffic infrastructure, data and software security will become of vital concern say analysts.

“Due to this exponential growth in the automotive electronics industry, owning a modern vehicle is equivalent to operating 30 or more computers on wheels,” IBM said.

This week General Motors told the world it was on track to offer driverless cars within a decade while German city, Ingolstadt unveiled a system of intelligent traffic lights that could tell drivers when the lights are about to change.

Go to link:>

<http://www.theage.com.au/digital-life/cartech/big-brother-in-the-drivers-seat-20100610-xzx1.html>

Google Maps Made Me Walk Onto the Highway, Woman Claims

In my opinion, mapping software paired with GPS technology is one of the more remarkable developments of the modern age, but you know what? You do still need to look where you're going occasionally. Please remember this if you are out for a walk.

Lauren Rosenberg was not aware of, or forgot, this important detail, and so when Google Maps offered her these directions --



- she tootled right along, on foot, onto and along the highway, where she alleges she was hit by a car.

Rosenberg's lawsuit names the driver of the car that hit her as a defendant, which makes sense, but also names Google, alleging it was negligent in steering her onto said road and failed to warn her of the dangers that might be encountered there, to wit, cars.

Go to link:>

[http://www.loweringthebar.net/2010/05/google-maps-made-me-walk-onto-the-highway-woman-claims.html?utm_source=feedburner&utm_medium=feed&utm_campaign=Feed:+LoweringTheBar+\(Lowering+the+Bar\)](http://www.loweringthebar.net/2010/05/google-maps-made-me-walk-onto-the-highway-woman-claims.html?utm_source=feedburner&utm_medium=feed&utm_campaign=Feed:+LoweringTheBar+(Lowering+the+Bar))

Kite Cams Capture Gulf Devastation

By [Mark Navin and Tom Urell](#)

Published May 27, 2010 UPDATED 2:13 PM

Every month, 10 Boston-area philanthropists chip in \$100 to help fund a project they decide is "awesome." In April, the [Awesome Foundation](#) awarded \$1,000 to a grassroots group of cartographers who are mapping the Gulf oil spill, taking digital images from kites and balloons above the Chandeleur Islands off the coast of Louisiana.



Go to link:>

<http://www.wbur.org/2010/05/27/awesome>

China Will Issue Internet Map Licenses In June 2010

May 28, 2010

A representative from the State Bureau of Surveying and Mapping of China has revealed that the bureau will issue the first batch of licenses to Chinese Internet map service providers in June 2010.

The representative also said that by the end of 2010, companies still operating Internet map services without the license will be prosecuted in China.

The new licensing is expected to focus on only allowing Chinese-owned businesses with appropriate credentials to place and produce maps on their websites, thereby adversely affecting any foreign-owned or foreign-invested Internet firms operating in China.

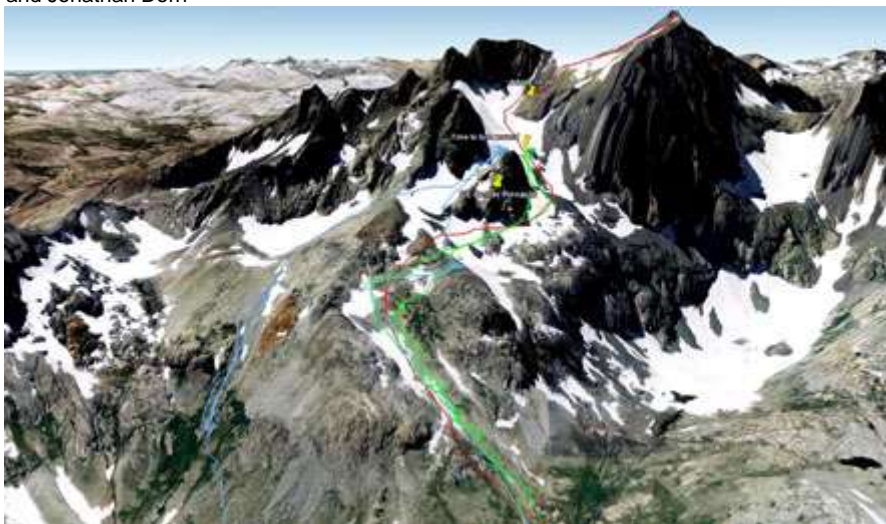
Go to link:>

<http://www.chinatechnews.com/2010/05/28/12122-china-will-issue-internet-map-licenses-in-june-2010>

The Future of Maps

Four cutting-edge cartographers--from Google's explorer-in-residence to Tom Harrison himself--help us chart the course of the next revolution in wilderness mapping.

by: Kris Wagner and Jonathan Dorn



Peter Birch's map of attempts on Mt. Ritter.

Imagine maps that change as fast as conditions on the ground. That's just one of the revolutions envisioned by today's leading cartographers and navigation experts, who joined BACKPACKER for a roundtable discussion led by map editor Kris Wagner and editor-in-chief Jonathan Dorn.

Go to link:>

http://www.backpacker.com/future_of_maps/destinations/14237

Fiordland geology mapped for hazards

By SCOT MacKAY - The Southland Times
Last updated 05:00 29/05/2010

A new geological map of Fiordland can help scientists identify areas that are more subject to hazards than others.

GNS Science geologists have spent 370 days of the past seven years mapping the different rock types in the national park.

GNS geologist Dr Ian Turnbull said one of the benefits of the map was the identification of natural hazards, such as landslides and earthquakes.

"(These) are the most significant natural hazards," he said.

The map highlights the areas where major landslides would most likely occur, he said.

The map, which was published this week, covers about 12,000 square kilometres of Fiordland and is one of 21 maps charting the geological makeup of New Zealand.

Geologists made several advances in geological knowledge during the mapping project, including the discovery of previously unknown rock formations.

Go to link:>

<http://www.stuff.co.nz/southland-times/news/3753047/Fiordland-geology-mapped-for-hazards>

Maps Emerge as Key Communication Tool for Businesses

TORONTO, May 27 /CNW/ -

If a recent surge of orders of customized maps is an indication of a trend, then companies need to add maps to their roster of communication vehicles.

Internet sites such as Google and Bing provide free location-based information but without the additional customization such as location-based spotting (LBS) and identifiers as well as land usage, which can be critical to companies and their customer-base. Now through technological advancements, organizations are looking at custom maps for business development, sales and marketing in a new way.

Go to link:>

<http://www.newswire.ca/en/releases/archive/May2010/27/c7014.html>

No, Not With The Google Maps

Burglars and terrorists should be careful not to use Google Maps if they plan on committing crimes in the state of Louisiana ... a bill approved 89-0 by the Louisiana House will require that judges impose an additional minimum sentence of at least 10 years on terrorist acts if the crime is [committed with the aid of an Internet-generated 'virtual map.'](#) The bill, already approved by the Louisiana Senate, defines a 'virtual street-level map' as one that is available on the Internet and can generate the location or picture of a home or building by entering the address of the structure or an individual's name on a website. If the map is used in the commission of a crime like burglary, the bill [calls for the addition of at least one year in jail](#) (PDF) to be added to the burglary sentence.

Go to link:>

<http://vatul.net/blog/index.php/4322/>

Armenia to create movable property cadastre

From: *Mihran Keheyian* <mkeheyian@gmail.com>

Date: Wed, 9 Jun 2010 22:35:46 PDT

PanARMENIAN.Net -

Armenian Deputy Prime Minister, Minister of the Territorial Administration Armen Gevorgyan received a delegation of Geodesy, Cartography and Cadastre Authority of the Slovak Republic led by its chairman Stefan Moyzes.

Chairman of the Armenian State Committee of the Real Estate Cadastre Yervand Zakharyan also participated in the meeting, the Ministry's press service reported.

The Deputy Prime Minister noted that the system of the real estate cadastre is considered to be a key structure in Armenia - both as a real estate base and as a guarantor of property rights protection. Mr. Gevorgyan noted that reforms to be carried out for the system

improvement will include automation and introduction of new methods of registration. Besides, according to him, Armenia plans to create a cadastre of movable property, for which the experience of Slovak partners may be useful.

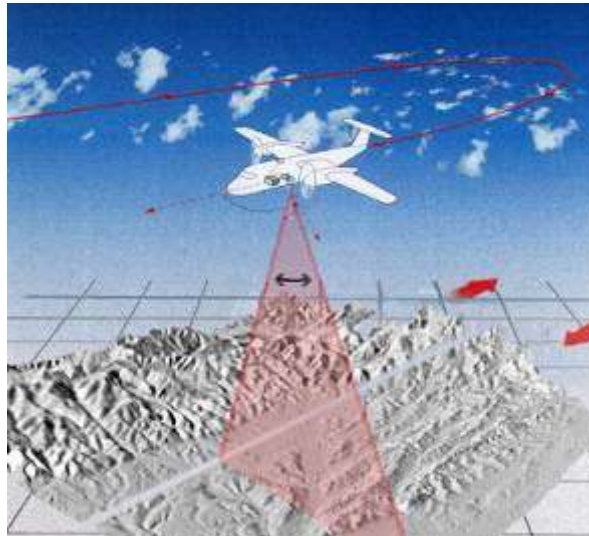
The Deputy Prime Minister expressed hope that the visit of the Slovak delegation to Armenia will be effective for the two parties and will create opportunities for further cooperation.

For their part, the Slovak delegation members briefed Mr. Gevorgyan on their country's cadastre system and the projects being implemented.

LIDAR Mapping

LIDAR THEORY

FUGRO EARTHDATA, INC. LIDAR MAPPING FACT SHEET



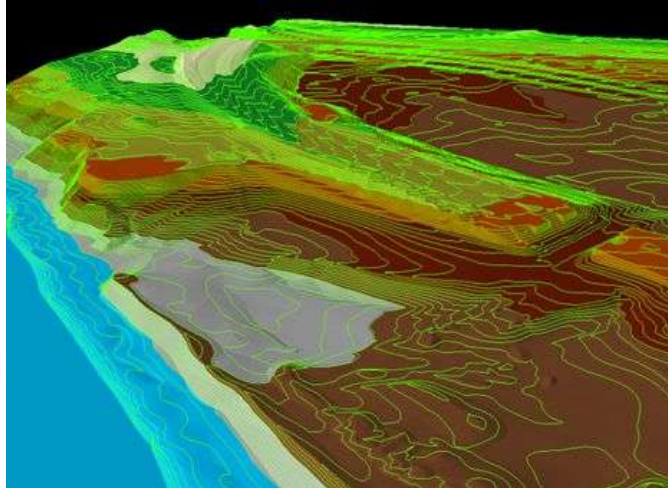
Lidar systems collect height and elevation data using light from the near-infrared wavelength.

What is lidar? Lidar is an acronym for “light detection and ranging.” In the mapping industry, this term is used to describe an airborne laser profiling system that produces location and elevation data to define the surface of the earth and the heights of above-ground features. Mounted on either a helicopter or a fixed-wing aircraft, lidar systems use the near-infrared portion of the electro-magnetic light spectrum (1064 nm) to collect data night or day, in shadow, and beneath clouds. Using semi-automated techniques the “raw” lidar data is processed to generate a number of useful end products, including an accurate “bare-earth” terrain model in which trees, vegetation, and manmade structures have been edited out.

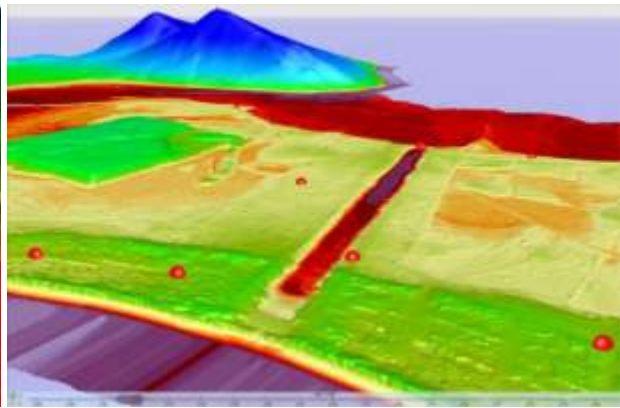
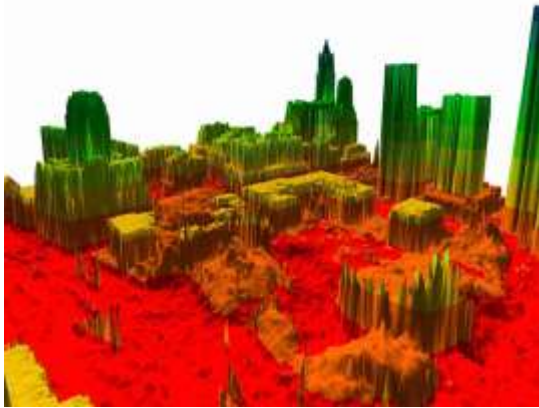
Go to link:>

http://www.fugroearthdata.com/pdfs/FCT_Lidar-Educational_11-07.pdf

LIDAR Images



http://www.fugroearthdata.com/images/services/c-servicesubcat_9_0.jpg
http://www.google.com.au/imgres?imgurl=http://i.treehugger.com/images/2007/10/24/lidar%2520map-jj-001.jpg&imgrefurl=http://www.treehugger.com/files/2007/06/3-d_forest_mapping.php&usg=__eOXDVFj5Sgtdt9dHdIXis4yrqBU=&h=342&w=464&sz=53&hl=en&start=12&um=1&itbs=1&tbnid=P6-hYvZDCvNjfm:&tbnh=94&tbnw=128&prev=/images%3Fq%3Dlidar%2Bmapping%26um%3D1%26hl%3Den%26client%3Dfirefox-a%26sa%3DN%26rls%3Dorg.mozilla:en-GB:official%26tbs%3Disch:1



<http://www.loc.gov/exhibits/911/images/lg-map-lidar1.jpg>

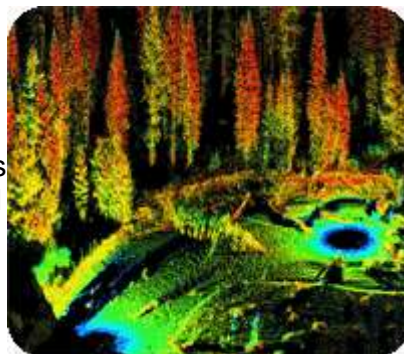
Go to link:>

http://www.eonfusion.com/uploaded/263/13400040_59changelauderdale1origin.jpg

International Workshop on Terrestrial Lidar – From Static to Mobile

15-18 October, Zhengzhou, Henan Province, China

TERRESTRIAL LIDAR 2010 is the first international workshop on terrestrial laser scanning (TLS or Lidar) technologies and applications that takes place in China. The theme selected for TERRESTRIAL LIDAR 2010 will bring together the researchers and practitioners from around the world with one focused objective of sharing information on lidar mapping technology and services.



TERRESTRIAL LIDAR 2010 is a joint ISPRS

event, co-organized by [ICWG VI - Land-Based Mobile Mapping](#)

[Systems](#), [WG V/3 - Terrestrial Laser Scanning and 3D Imaging](#), and [WG I/3 - Multi-Platform Multi-Sensor Inter-Calibration](#). The local hosts are Zhengzhou Institute of Surveying and Mapping and the Engineering Surveying Branch of the Chinese Society for Geodesy, Photogrammetry and Cartography (CSGPC).

The TERRESTRIAL LIDAR 2010 Scientific Committee is seeking papers and work-in progress reports on all aspects of terrestrial lidar mapping, with a particular emphasis on papers that address the key commercial and technical issues facing the geomatics industry.

Go to link:>

<http://www.environment.uwaterloo.ca/research/isprs/lidar2010/>

Cartographic Resources

Online Maps

Maps intended for online viewing also have different requirements than those meant to be viewed on paper. Turner explains:

If you're developing a map specifically for the Internet, generally the fonts have to be larger so you can read the type on screen. You have fewer choices in color because not every color will necessarily output correctly if somebody's trying to print that map. So, because of limitations in color, because of the limitations in type size, compared to a print map it generally has to be much simpler... You generally develop a map that's going to fit on a standard computer screen so that the user doesn't have to pan around to be able to interpret the information.

You can check out some interactive maps at the HowStuffWorks [Maps channel](#).

Go to link:>

<http://science.howstuffworks.com/map6.htm>

A New Technique for Constructing Continuous Cartograms

by: [Sabir M. Gusein-Zade](#), [Vladimir S. Tikunov](#)

Cartography and Geographic Information Science (July 1993), pp. 167-173.

Abstract

This paper deals with the problem of constructing graphic images of territories that make the density of a variable (e.g., the density of population) uniform. The authors discuss some existing construction algorithms and describe a new algorithm and the results of its applications.

<http://www.citeulike.org/user/alexstorer/article/7258410>

Academic GIS, Geography, and Geo Tech Journals

There's no questioning that GIS and Geo Tech has some pretty strong ties to Canada – hey, I'm from there after all.. oh, and so is Roger Tomlinson! If you're interested in some academic reading, journals, or other really geeky tech stuff then here's a few Journal titles that you may wish to Google at some time:

- Cartographica (Canada CCA)
- ACMLA Bulletin (Canada)
- Cartouche Newsletter (Canada CCA)
- Canadian GeographicGeomatica (formerly CISM Journal ACSGC)
- Canadian Journal of Remote Sensing (Canada)
- Canadian Geotechnical Journal (Canada)
- Canadian Journal of Earth Sciences (Canada)
- Geoscience (Canada – Bulletin)
- GEOinfo (Canada – L'actualité en géomatique au Québec)The Cartographic Journal (UK)
- Cartographic Perspectives (NACIS)

- Cartography and Geographic Information Science (CaGIS)
- MapForum.Com (Specialist Antique Map Magazine)
- Mapline (US Chicago)
- Arc North News
- Base Line (Springfield Ill., Map and Geography Roundtable)
- Bulletin of the Society of Cartographers
- Information Bulletin (Western Association of Map Libraries)
- Journal of Maps
- Bulletin du comite francais de cartographie (the library cancelled this title in 1997 but it is still being published)
- The Portolan
- IMCoS Journal (International Map Collectors' Society)
- Journal of map & geography libraries (International)
- Coordinates (American Library Association)
- Coordinates. Series B (American Library Association).
- International Cartographic Association (ICA – many publications with commissions)
- Le Monde des cartes (France)
- Spatial Science (International)
- Imago Mundi (International – history)
- Geographical Review (US)
- Cartographic Perspectives (US)
- Cartography and Geographic Information Systems (US)
- L'Espace Geographique (France)
- Terra Incognitae (US?International?)
- Map World Magazine (Australia)
- GISuser.com
- Directionsmag
- Vector1 Media
- ArcUser Magazine

Go to link:>

http://blog.gisuser.com/?p=7145&utm_source=feedburner&utm_medium=feed&utm_campaign=Feed%3A+Anygeo-AnythingGeospatial+%28AnyGeo++Anything+Geospatial+from+the+GISuser%29

Education in applied sciences: Geometry, Arpentage, Surveying and Vermessungswesen (Homepage: www.gromatica.net).

The Gromatica is a research institution that deals with education in applied sciences following: Geometry, Arpentage, Surveying and Vermessungswesen. It was established in 2009 by Prof. Carlito Vieira de Moraes.

The missions of this institution are: a) to make available to scholars and professionals in the research programs of educational and professional institutions in the world; b) to enhance the knowledge; c) to preserve the knowledge.

The institution does not aim at commercial or advertising market.

The homepage [www.gromatica.net] is under development. Therefore, some sections require preparation, and **other sections need improvement.**

Cartographic Techno Talk

OBIS Selects OpenGeo for Web-based Geospatial Mapping

June 03, 2010

- Original PRWeb article: [OBIS Selects OpenGeo for Web-based Geospatial Mapping](http://www.prweb.com/releases/2010/06/obis-selects-opengeo-for-web-based-geospatial-mapping)

OpenGeo today announced that the Ocean Biogeographic Information System (OBIS) has selected the OpenGeo Suite Enterprise Edition to replace their existing geospatial mapping tools. The product is a fully-integrated, open source geospatial platform for manipulating maps and data that provides enhanced capabilities like the ability to edit vector data through a web interface, imagery delivery and customized web application development. OpenGeo will provide unlimited support and bug fixes for PostGIS, GeoServer, OpenLayers and the rest of the open source platform to help OBIS extract intelligent data more easily from its 27 million record database and improve the ease of use for its global audience.

Dr. Edward Vanden Berghe, Executive Director of OBIS, said, "We are very enthusiastic about this collaboration.

Go to link:>

<http://www.topix.net/content/prweb/2010/06/obis-selects-opengeo-for-web-based-geospatial-mapping>

Sat nav takes charge

By David Williams

Published: 7:15AM BST 03 Jun 2010



Econav uses digital mapping to warn drivers of the true cost of speeding

Using digital mapping, the Econav device alerts the driver whenever their car creeps over the limit. Owners can set sensitivity levels so that it delivers a warning as soon they reach the official speed limit, or when they're a few mph over. Users can choose between a visual warning or an audible one - or a combination of the two.

Econav's 'Less Points, Less Fines' application also tots up any administrative costs that a driver faces in the event of breaking the speed limit. If they are potentially liable for a £60 fine, the device will automatically alert the driver to the £15 prosecution cost that drivers also have to pay.

The new feature is in addition to Econav's existing 'ecological' feature which - after the owner has loaded details of their specific car - issues prompts on when to change gear or reminders to accelerate and brake less fiercely.

Go to link:>

<http://www.telegraph.co.uk/motoring/caraccessories/7797846/Sat-nav-takes-charge.html>

Wide Dynamic Range Vegetation Index for Remote Quantification of Biophysical Characteristics of Vegetation

by: [A. Gitelson](#)

Journal of Plant Physiology, Vol. 161, No. 2. (2004), pp. 165-173.

Summary The Normalized Difference Vegetation Index (NDVI) is widely used for monitoring, analyzing, and mapping temporal and spatial distributions of physiological and biophysical characteristics of vegetation. It is well documented that the NDVI approaches saturation asymptotically under conditions of moderate-to-high aboveground biomass. While reflectance in the red region (ρ_{red}) exhibits a nearly flat response once the leaf area index (LAI) exceeds 2, the near infrared (NIR) reflectance (ρ_{NIR}) continue to respond significantly to changes in moderate-to-high vegetation density (LAI from 2 to 6) in crops. However, this higher sensitivity of the ρ_{NIR} has little effect on NDVI values once the ρ_{NIR} exceeds 30 %. In this paper a simple modification of the NDVI was proposed. The Wide Dynamic Range Vegetation Index, $WDRVI = (a * \rho_{NIR} - \rho_{red}) / (a * \rho_{NIR} + \rho_{red})$, where the weighting coefficient a has a value of 0.1–0.2, increases correlation with vegetation fraction by linearizing the relationship for typical wheat, soybean, and maize canopies. The sensitivity of the WDRVI to moderate-to-high LAI (between 2 and 6) was at least three times greater than that of the NDVI. By enhancing the dynamic range while using the same bands as the NDVI, the WDRVI enables a more robust characterization of crop physiological and phenological characteristics. Although this index needs further evaluation, the linear relationship with vegetation fraction and much higher sensitivity to change in LAI will be especially valuable for precision agriculture and monitoring vegetation status under conditions of moderate-to-high density. It is anticipated that the new index will complement the NDVI and other vegetation indices that are based on the red and NIR spectral bands.

Go to link:>

<http://www.citeulike.org/user/kevinpdavies/article/7238526>

NAVTEQ(R) Map To Power Mobile Devices' Telematics Platforms and Connected PNDs

Global customised transport and logistics applications specialist opts for NAVTEQ data

PARIS, June 2 — (PRNewswire) — NAVTEQ, the leading global provider of maps, traffic and location data enabling navigation, location-based services and mobile advertising around the world, has announced that Mobile Devices has chosen to utilize NAVTEQ data globally in its line of dedicated and standardized platforms for fleet management and telematics applications.

Mobile Devices is using NAVTEQ maps for Europe, North America, Latin America and Asia Pacific for PND navigation applications, hence the map data will also be employed in Mobile Devices' Dreevo connected PNDs, which are available direct to consumers and also as an integral part of the company's enterprise solutions which include white label application stores and its technology "Screen Share".

Go to link:>

<http://www10.gisafe.com/nbc/articles/1/829756/NAVTEQ%28R%29-Map-Power-Mobile-Devices-Telematics-Platforms-Connected-PNDs>

Climate

Climate Change

Lake Tanganyika is an African Great Lake. It is estimated to be the second or third largest freshwater lake in the world by volume, and the second deepest, after Lake Baikal in Siberia. It is situated in the Great Rift Valley. Geologists led by Brown University have determined the east African Rift Lake has experienced unprecedented warming during the last century, and its surface waters are the warmest on record. That finding is important, the scientists write in the journal *Nature Geoscience*, because the warm surface waters likely will affect fish stocks upon which millions of people in the region depend.

The Lake lies in the East African Rift which is an active continental rift zone in eastern Africa that appears to be a section of Africa splitting off from the rest of Africa. The Rift runs from the Afar Triple Junction in the Afar Depression southward through eastern Africa and the Lake.

It is estimated that 25—40% of the protein in the diet of the approximately one million people living around the lake comes from lake fish. Currently, there are around 100,000 people directly involved in the fisheries operating from almost 800 sites. Lake Tanganyika is bordered by Burundi, the Democratic Republic of Congo, Tanzania, and Zambia which are among the poorest countries in the world.

The research team took core samples from the lake bed that laid out a 1,500-year history of the lake's surface temperature. The data showed the lake's surface temperature, 26 degrees Celsius (78.8°F), last measured in 2003, is the warmest the lake has been for 1500 years.

Go to link:>

<http://www.enn.com/ecosystems/article/41334>

[From the EISNews May 2010]

Call For Women Scientists To Participate In Training And Networking On Climate Change Assessment, Information Dissemination And Policy Advocacy

August 2010 - August 2012

The International Foundation for Science (IFS) Eastern Africa Hub together with the Regional Universities Forum for Capacity building in Agriculture (RUFORUM), the Regional Center for Mapping of Resources for Development (RCMRD) and the IGAD Climate Prediction and Application Center (ICPAC) with support from NORAD have the pleasure to announce a training and networking project on “enhancing the participation of African Women Scientists in Climate Change Assessment, Information Dissemination and Policy Advocacy”. The program which will run from August 2010 – August 2012 will aim to promote the implementation of climate change adaptation and mitigation measures in Eastern Africa through enhancing the capacities of women scientists. The overall goal of the project is to build the capacity to adapt to, and mitigate climate change in order to contribute to environmental sustainability and poverty reduction in Eastern Africa countries.

Go to link:>

www.eis-africa.org

AARSE 2010

8th International Conference of the African Association of remote Sensing and the Environment (AARSE)

Earth Observation for Africa's Development Agenda

25 to 29 October 2010-06-01

Addis Ababa, Ethiopia

Go to link:>

www.aarse2010.org

Could online maps save coral reefs?

By Dean Irvine, CNN
Earth's Frontiers

May 25, 2010 -- Updated 1033 GMT (1833 HKT)



From the Coral Triangle to the Caribbean, Reefs at Risk Revisited will use color-coded maps to show threats to coral reefs.

STORY HIGHLIGHTS

- Coral reef project using Google Earth to collect and present new report
- Reefs at Risk project will show on interactive maps main threats to world's reefs
- Project leader hopes public as well as policy-makers and green groups will use maps

(CNN) -- You used to know them as maps, but in a Web 2.0 world they're now called geographic information systems (GIS) and they could play a key part in saving the world's endangered coral reefs.

Harnessing the power of interactive maps is Reefs at Risk Revisited, a conservation and research project headed by the World Resources Institute. It is in the process of updating its 1998 survey on the threats to the world's coral reefs and central to the project is Google Earth.

The online map is being used to collect data from nearly 30 project partners, including WWF and Conservation International, and the final report will be freely available to the public (*in September*).

Go to link:>

<http://edition.cnn.com/2010/TECH/05/25/reefs.google.earth/index.html?iref=allsearch>

Smoke signals

03 June 2010



Professor John Handmer at bushfire-affected Kinglake, near Melbourne. Photo: Carla Gottgens.

In California, firefighters have declared that there is no longer a bushfire season. They prefer instead to talk about periods of low and high risk - with the high-risk season extending much longer than before.

It's a big call, but one that reflects that climate change is not simply about higher average temperatures but about higher risks of disaster.

Sceptics may scoff, but the insurance industry for one is taking the challenge seriously. According to Swiss Re, eight of the top 10 insured losses worldwide between 1970 and 2005 were weather-related, with five of those occurring in just two years, 2004 and 2005.

Hurricane Katrina was more than twice as expensive as the 9/11 attacks.

What sort of additional disasters are we talking about, how often may they occur and how can we prepare for them?

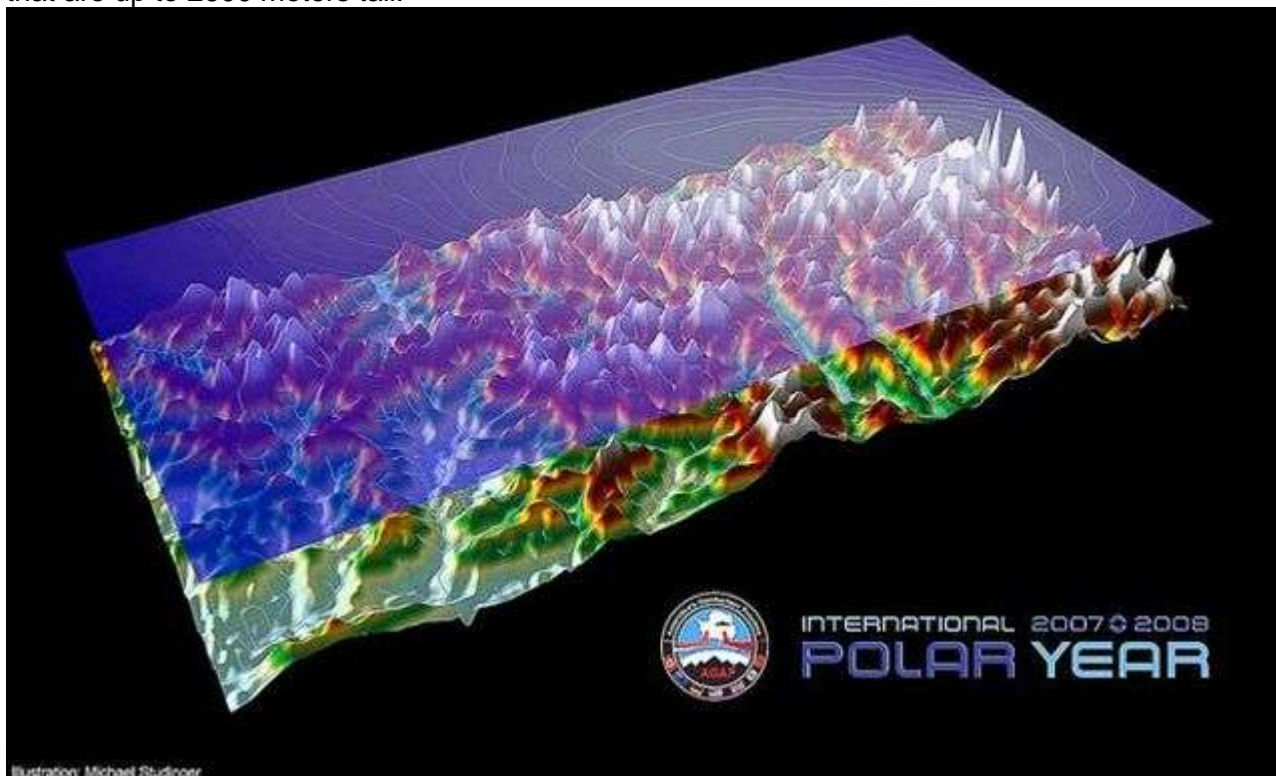
That's the subject of a special report, *Managing the Risks of Extreme Events and Disasters*, being prepared by the Intergovernmental Panel on Climate Change, the body that has brought us the definitive word on human-related climate change.

Go to link:>

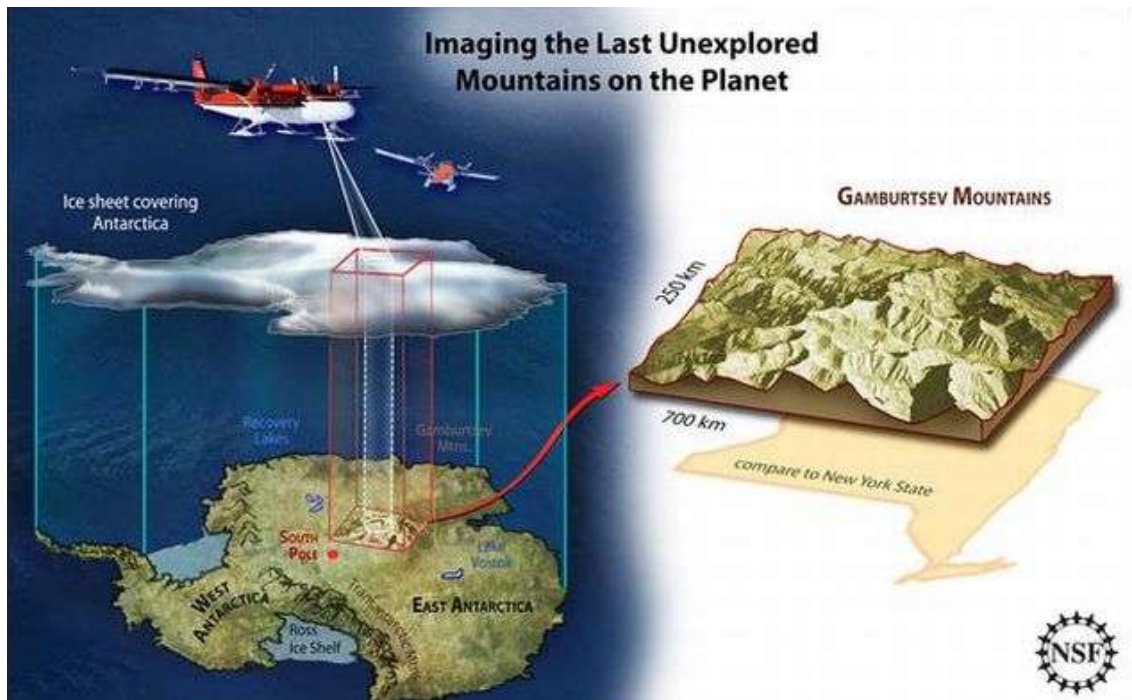
<http://www.rmit.edu.au/browse;ID=tb9sop7kw4i8>

The First Detailed Images of Antarctica Landscape That Is Hiding Beneath The Ice

- Wednesday, January 27, 2010, 16:02
- Do you know what is hiding miles beneath the icy surface in Antarctica? Scientists have finally managed to visualize a landscape that is hiding under an ice sheet.
- Scientist used a ground-penetrating radar in last two years to create most detailed images of a Antarctica landscape that is hiding beneath the ice. Images that are result of surface scanning revealed a landscape with a number of a roughly peaks that are up to 2600 meters tall.



- This project was called Gamburtsev Province Project and it is a part of the International Polar Year science program.



Credits: [[National Geographic](http://www.nationalgeographic.com)]

Go to link:>

<http://incredibleworld.net/2010/01/the-first-detailed-images-of-antarctica-landscape-that-is-hiding-beneath-the-ice/>

Water, water everywhere as downpour settles the dust

DARREN GRAY

June 8, 2010



The flooded Cuttaburra basin in NSW. Photo: Terry Korn

AT NEARLY 100 kilometres long and 35 kilometres wide it's far bigger than your average wetland. Fed by the vast Queensland floods of March, it spreads into two states and covers about 3500 square kilometres.

In some places the water level of the Caryapundy Swamp sits above the "dog fence" separating New South Wales and Queensland, which means it can be more than 1.8 metres deep.

The swamp is just one of a vast number of lakes, billabongs and wetlands in outback Queensland and NSW that have been inundated thanks to rainfall of more than 100 millimetres in 24 hours across a vast region.

Go to link:>

<http://www.theage.com.au/environment/water-issues/water-water-everywhere-as-downpour-settles-the-dust-20100607-xqsr.html>

Odd Spot

Ancient Map Moth (Horned Spanworm Moth)



Horned Spanworm Moth *Nematocampa resistaria*

This gorgeous beauty brought out the cartographer in me. I stare at this thing long enough and I see lakes, rivers, land masses, oceans and even lines for coordinates on a globe. I made every effort, but found this very difficult to photograph. It actually had much more of a yellow/gold appearance, perhaps caused by the reflective shine of the scales. I worked with the color temperature controls in photoshop and was unable to get an exact match with what I saw, but this is fairly close.

Go to link:>

<http://www.flickr.com/photos/modofrodo/3471188963/>

Giant sinkhole swallows three-storey building in tropical storm

June 1, 2010 - 2:11PM

The Age

AP, AAP

Downpours caused by Tropical Storm Agatha have created a giant sinkhole in Guatemala City. The sinkhole, which formed in the northern part of the capital city, swallowed up a space larger than the area of a street intersection, CNN reported on Monday. Residents told CNN that a three-storey building and a house fell into the hole.



Go to link:>

<http://www.theage.com.au/world/giant-sinkhole-swallows-threestorey-building-in-tropical-storm-20100601-wtc6.html?autostart=1>

Europe Field Map



Go to link:>

http://www.exornamentis.de/Galerie/labyrinth/2003_europa_2.jpg

City Maps Watch Design

April 28th, 2009 . By [Eran Abramson](#) in [Watches](#) .

There are a few main items that travellers will always have handy: a wristwatch and a handy map. These new Watch designs by Itay Noy kind of combine the two together in a beautiful looking wristwatch.

This new line of wristwatches called "City Square" present a wonderful and detailed image of famous cities in a tiny and handy map printed on the watch's face. Hamedina in Tel Aviv, Columbus Circle in New York, San Pietro in Rome, and Trafalgar Square in London are a few of the famous tourist attractions which have made their way onto the maps presented o this cool wristwatches.

They may not be large enough to actually be used on a daily basis but may provide some with a little extra confidence when strolling around those places.



<http://www.walyou.com/blog/2009/04/28/city-maps-watch/>

Cartography Quiz

Mapping

The cartographic technique by which points on the sphere of the Earth are transferred to points on the plane surface of a map is ...

- A. trajectory
- B. projection
- C. intersection
- D. interpolation
- E. Approximation

Topo Maps

One of the distinctive features of a topographic map is that it shows ...

- A. roads
- B. latitudes
- C. elevations
- D. scale of distances
- E. man-made structures

Compasses

A compass indicates direction by detecting ...

- A. pressure differences
- B. variations in gravity
- C. solar wind directions
- D. magnetic lines of force
- E. differences in temperature

Latitudes

Which country shares a line of latitude with Mexico?

- A. Libya
- B. Denmark
- C. Mozambique
- D. North Korea
- E. New Zealand

Bearings

A compass bearing of 165 degrees describes a ...

- A. northerly direction
- B. northwesterly direction
- C. southeasterly direction
- D. southwesterly direction
- E. northeasterly direction

Lots of Longitude

Lines of longitude are most closely spaced in the northern part of ...

- A. China
- B. Russia
- C. Turkey
- D. Brazil
- E. Australia

Persistent Problems

The most enduring and elusive challenge to navigators was accurately determining ...

- A. latitude
- B. longitude
- C. elevation
- D. true north
- E. magnetic north

Answers:

Go to link:>

<http://www.greatauk.com/wqcartog.html>

Feature Maps

Cartography that inspires art



“[The Map as Art](#),” a new book edited by Katharine Harmon from Princeton Architectural Press, describes how artists draw on the rich landscape of maps for inspiration. Since I have a degree in Urban Geography, this is an especially interesting topic for me (though my career didn’t exactly follow that path!). While I haven’t read this book, just the reviews and descriptions of it prompt lots of thoughts.

Go to link:>

<http://lorigordon.files.wordpress.com/2009/11/fionas-wave-2005.jpg>

Rare early maps of Canada hit European auction block

BY RANDY BOSWELL, CANWEST NEWS SERVICE APRIL 5, 2010

© Copyright (c) Canwest News Service



A map Dutch mapmaker Cornelis de Jode in 1593 and valued at more than \$40,000, captures the state of knowledge of New France and New England before Champlain even arrived in the New World about 400 years ago.

Photograph by: Canwest News Service, Photo Handout

Two rare and important maps from Canada's early history are to be auctioned in the coming weeks at separate sales in Paris and London.

One of the maps, created by famed 17th-century French cartographer Pierre Du Val, was tucked inside a valuable copy of Samuel de Champlain's collected writings about his North American discoveries — a package deal expected to draw a top bid of more than \$160,000 at a Christie's auction in Paris on April 20.

The other artifact, created by Dutch map-maker Cornelis de Jode in 1593 and valued at more than \$40,000, captures the state of knowledge from French and English explorations of the Americas before Champlain even arrived in the New World some 400 years ago.

The de Jode map goes on the auction block at Sotheby's in London on May 6.

"The problem that de Jode faced was how to combine geographical detail from two different schools — the French for Maritime Canada and the English for the Carolinas — which did not dovetail," Sotheby's notes in its description of the Dutch map.



A map by French cartographer Pierre Du Val.
Photograph by: Canwest News Service, Photo Handout

Go to link:>

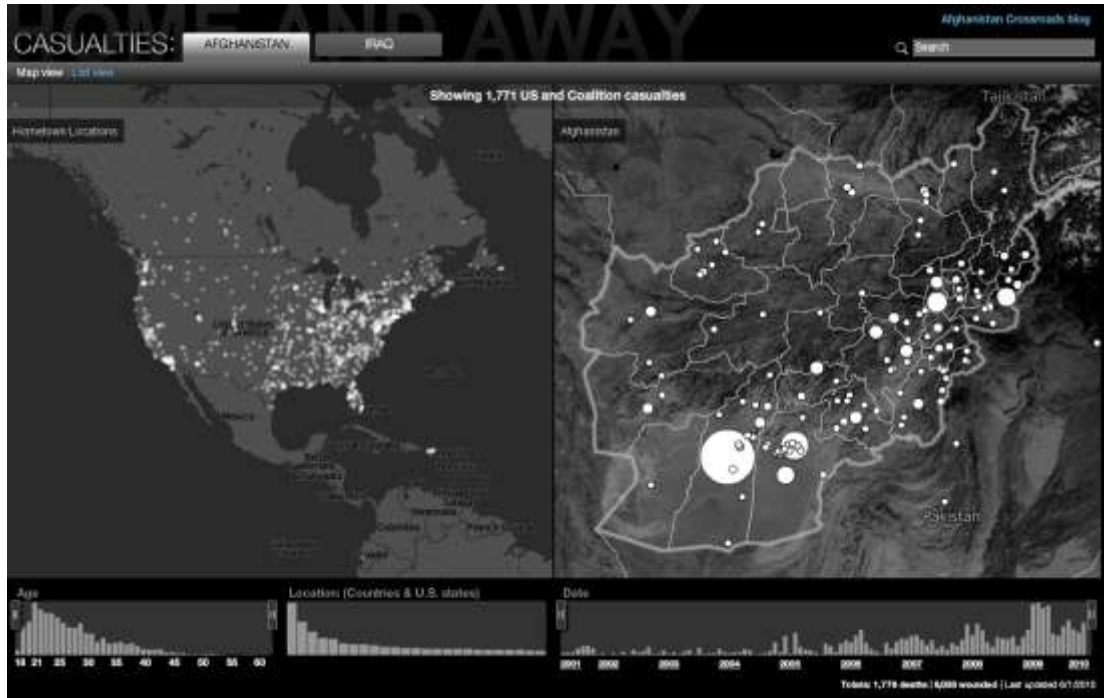
<http://www.canada.com/news/world/Rare+early+maps+Canada+European+auction+block/2765693/story.html>

A Dark Cartographic Topic

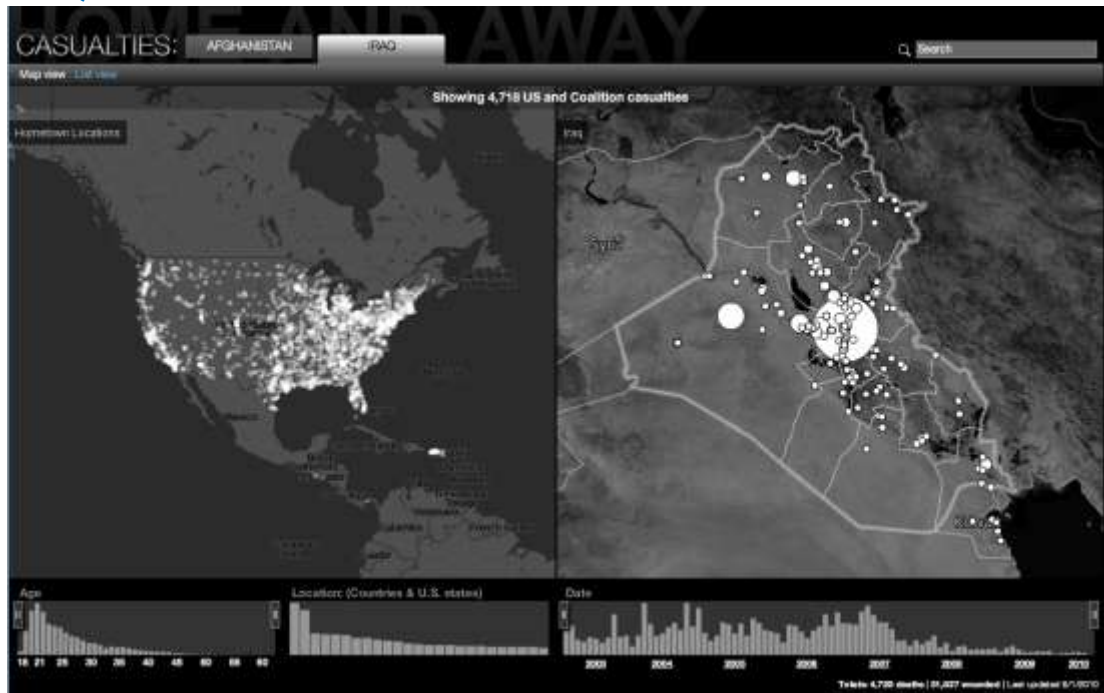
CASUALTIES

CNN has tracked the casualties since the wars began in Afghanistan and Iraq; a new feature to the site tracks service members' hometowns against a **map** of where they died in Afghanistan. At least 31,822 U.S. troops have been wounded in action, according to the Pentagon.

AFGHANISTAN



IRAQ



Go to link:>

<http://edition.cnn.com/SPECIALS/war.casualties/index.html>

The Times They Are a Changing

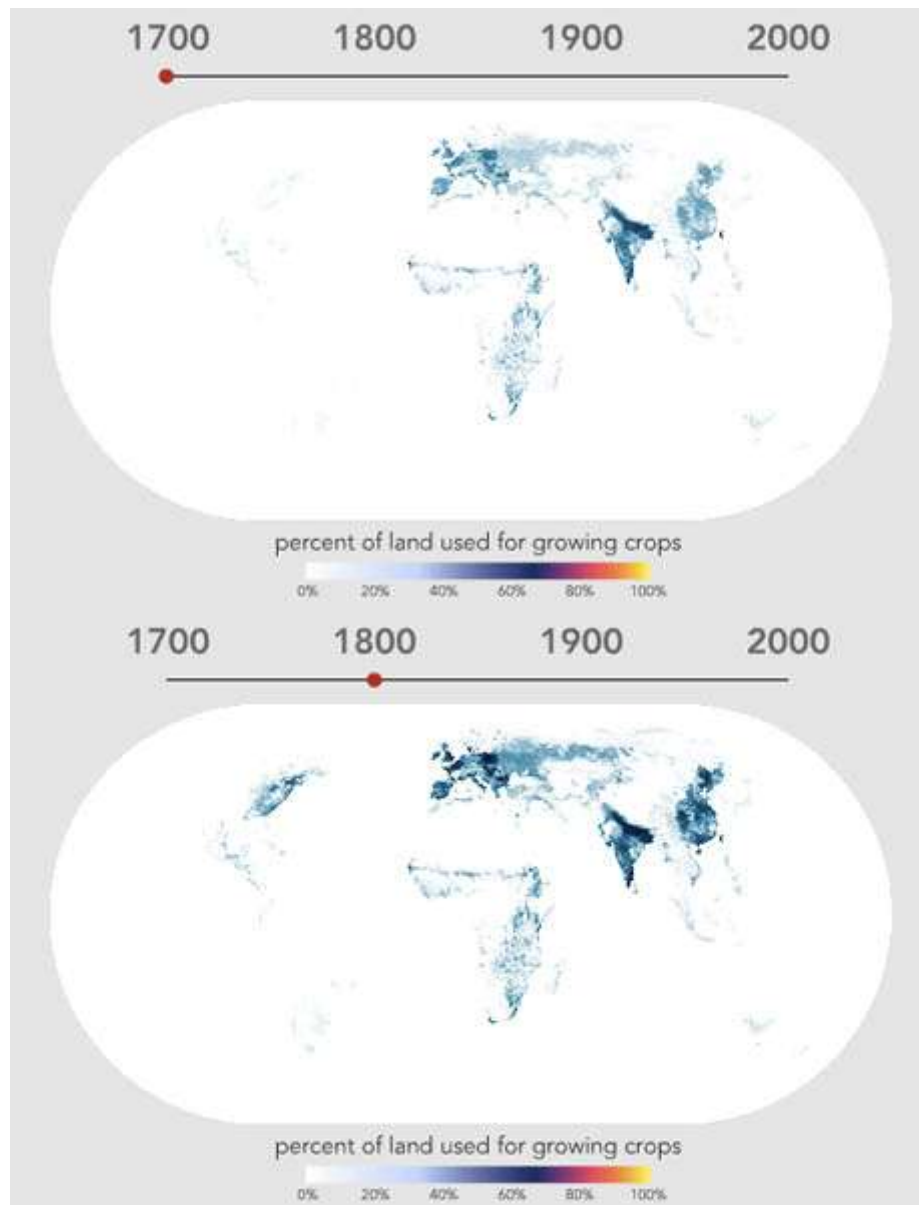
Agriculture Takes Over The World

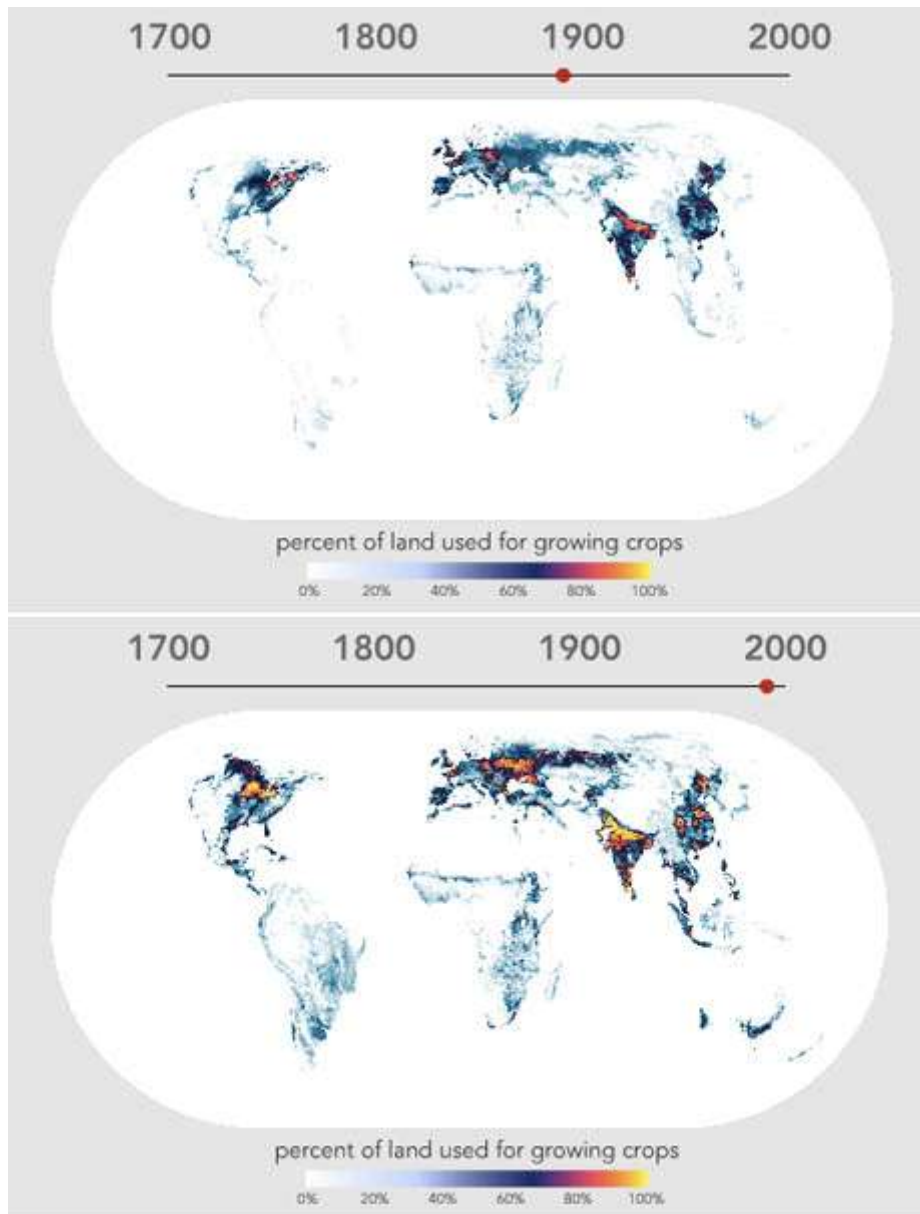
by Jeff Nield, Vancouver, British Columbia

05.31.10

FOOD & HEALTH (FOOD)

Starting in the 1700s (image at the top of the post) you can see how agriculture spreads out and intensifies in key areas.

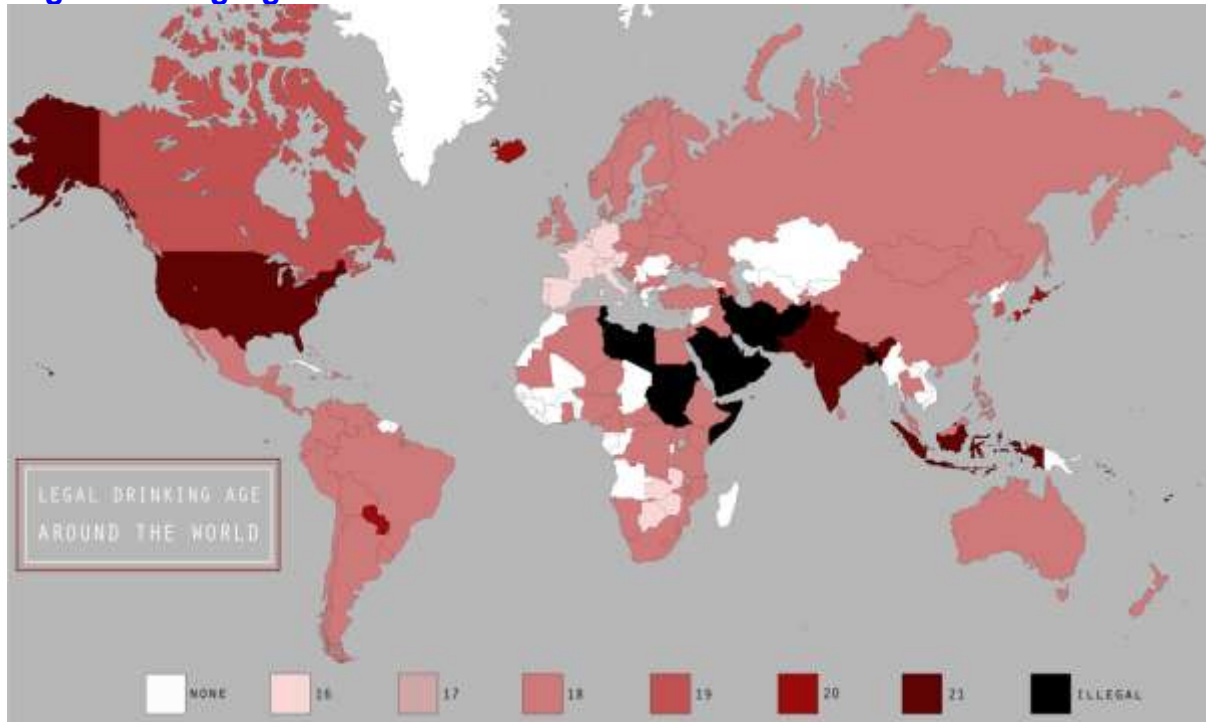




Go to link:>

[http://www.treehugger.com/files/2010/05/agriculture-takes-over-the-world.php?campaign=th_rss&utm_source=feedburner&utm_medium=feed&utm_campaign=Feed:+treehugger+site+\(Treehugger\)](http://www.treehugger.com/files/2010/05/agriculture-takes-over-the-world.php?campaign=th_rss&utm_source=feedburner&utm_medium=feed&utm_campaign=Feed:+treehugger+site+(Treehugger))

Legal Drinking Age Around The World



http://www.nuffy.net/pics/misc/drinking_age_world_map.jpg

Conferences

GI_Forum 2010

July 6-9, 2010

Symposium and Exhibit

Applied GeoInformatics

Salzburg

Learning with Geoinformation

Special Focus: Spatial Citizenship

Symposium & Vocational Training

Within the framework of GI_Forum 2010

July 7-9, 2010 – Salzburg, Austria

www.gi-forum.org/learning

IGU Commission on Geographical Education – CGE Symposium -2010)

July 8-10, 2010

Fatih University

Istanbul, Turkey.

<http://igucge2010.fatih.edu.tr/>

ESRI Business GIS Summit

July 11-12, 2010

San Diego, California

Will bring business professionals and industry leaders together to discuss the key advantages of a geoenabled organization.

<http://www.esri.com/events/business/index.html>

Interdisciplinary CODATA Workshop on RISK Models and Applications

August 26/27, 2010

Berlin, Germany,

http://www.codata-germany.org/RMA_2010/

Seventh European GIS Education Seminar

September 9-12, 2010

Serres, Greece

A specialist meeting on GIS education in Europe

www.eugises.eu

7th ICA Mountain Cartography Workshop

Mountain Mapping and Geospatial Information Retrieval

1-5 September 2010

Borsa, Romania

<http://www.mountaintography.org/>

GeoCart'2010

ICA Symposium on Cartography for Australasia and Oceania

1-4 September 2010

Auckland, New Zealand

The fifth National Cartographic Conference GeoCart'2010 and the first ICA Symposium on Cartography for Australasia and Oceania will convene in Auckland,.

<http://www.cartography.org.nz/geocart2010/index.htm>

7th Symposium on LBS and TeleCartography

20-22 September 2010

Guangzhou, China.

Go to link >

<http://www.lbs2010.org/>

INTERGEO 2010

5 to 7 October 2010

The (geo) world will come together in Cologne.

Around 475 companies from 30 countries will again open up new horizons at the world's leading fair for geodesy, geoinformation and land management. Today, 80 per cent of last year's exhibitors have already booked their trade fair participation

<http://aktuell.kundeninformation.net/re?l=6mg15ol1u9khtcl1&req=anr%3D>

3rd International Symposium of the ICA Commission on the History of Cartography

10-13 October 2010

University of Texas in Arlington, USA

The Symposium will be held in conjunction with the 7th Biennial Virginia Garrett Lectures on the History of Cartography (Friday, 8 October 2010) and the Fall Meeting of the Texas Map Society (Saturday, 9 October 2010);

www.icahistcarto.org

3rd International Conference on Geoinformation technology

For Natural Disaster Management and Rehabilitation

19-20, October, 2010-06-08 The Empress Hotel, Chiang Mai, Thailand

<http://e-geoinfo.net/git4ndm2010/>

ICA Commission on National and Regional Atlases

October 20-23, 2010

Yogyakarta, Indonesia,.

(1) Recent Directions in National Atlas Cartography
and

(2) National, Regional, City and School Atlases

as Expressions and Carriers of Space-related Identity

Organized by ICA Commission on National and Regional Atlases

National Coordinating Agency for Survey and Mapping, Indonesia

International Geographic Union

Regional Geographic Conference

IGU 2011

United and Integrated with the World

14-18 November, 2011

www.ugi2011.cl

AutoCarto 2010

November 15-18, 2010

Orlando, Florida

Sponsored by the Cartography and Geographic Information Society (CaGIS), The 18th in the series, this international research symposium on computer-based cartography and GIScience will be held in conjunction with the American Society for Photogrammetry and Remote Sensing (ASPRS). The International Cartographic Association and the International Society for Photogrammetry and Remote Sensing (ISPRS) Technical Commission IV: Geodatabases and Digital Mapping will also hold a number of commission meetings at AutoCarto 2010.

The focus of this joint meeting is **Geospatial Data and Geovisualization for the Environments, Security, and Society**.

<http://www.cartogis.org/autocarto>

The Use of GIS and Remote Sensing for Sustainable Development

29th Nov-03rd Dec, 2010

Tunis

We have the honour to invite you to participate in the events of **GEOTUNIS International Congress 2010** in its 5th Edition from 29 November to 03 December, **2010 in Tunisia** Centred under the theme "**The use of GIS and remote sensing for sustainable development**". A fifth **GeoTunis session** in front of distinguished scientific users of GIS and remote sensing for the most recent experiments and applications in scientific fields.

The congress will include 4 major scientific themes that address the various uses and applications of geographic information systems as well as numerous practical workshops supervised by the major international institutions active in the field.

Go to link:>

www.geotunis.org

Defence Geospatial Intelligence (DGI) 2011

24 - 27 January, 2011

QEII Centre London

The 7th Annual Geoint Conference & Exhibition

Defence Geospatial Intelligence (DGI) is Europe's largest annual gathering dedicated to high-level discussion addressing the major challenges of the defence and government geospatial intelligence community.

ISPRS Joint Workshop on 3D City Modelling & Applications

First call for papers and Announcement-ISPRS Joint Workshop on 3D City Modelling & Applications which will be held on 26-27 June, 2011 in Wuhan University, P.R. China.

In case of questions, please contact : 3dcma@lmars.whu.edu.cn

For more information please consult the workshop website:

www.lmars.whu.edu.cn/3DCMA2011.html

25th International Cartographic Conference

3–11 July 2011

Paris, France

Open to researchers, engineers, students, data producers and software suppliers, the ICC 2011 will be held from 4th to 8th July 2011 at the Palais des Congrès in Paris, with simultaneous proceedings in eight meeting rooms. This conference will consider the most wide-ranging issues involving cartography and geomatics. In addition to oral presentations, sessions will be organized for the presentation of work in the form of poster displays.

[Go to link >](#)

<http://www.icc2011.fr/>

NOTE: If you are involved in a workshop, symposium or conference related to cartography please send me brief details for the newsletter.

Reflective Piece

Our differentiated world

- 1% of the world's population owns 50% of the world's assets
- 10% of the world accounted for 59% of total private consumption, with the poorest 10% consuming just 0.5%
- Life expectancy varies hugely
- Our life experiences and opportunities are shaped – in some cases determined – by Geography

David Rhind, Prague, 2009