

**International Cartographic Association
Association Cartographique Internationale**



Commission on Education and Training

April 2010 Newsletter

An occasional electronic newsletter for members of the Commission.

If you have any brief items of interest to fellow CET members then please email them to david.fraser@rmit.edu.au for eCET.

If you have more substantial articles please send them to Igor Drecki at i.drecki@auckland.ac.nz for the ICA newsletter.

"Neither the historian nor the cartographer can ever reproduce the reality they are trying to communicate to the reader of books or maps; they can but give a plan, a series of indications, of this reality. There are contrasting schemes for choosing from enormous numbers of geographic details. You may have a map in which every feature that can be named is crowded in or you may have a map in which many details are omitted in the effort to show the reader the lay of the land.... Both kinds are useful, depending on the needs of the viewer." Crane Brinton (1963)

ICA - Commission on Education and Training Workshops 2010

Workshop - Indonesia 2010

The following workshop has been organised by the CET

INDONESIA - JAKARTA WORKSHOP on 26 July - 6 August 2010.

The 5th IGTE symposium will be held on 27-30 July 2010 (workshop presenters for week 1 are to speak at this event also)

WEEK 1 (July - Monday 26th - Friday 30th)

PRESENTER 1

Map projections
Map design/ Cartography design
Cartography theory (Map Evaluation)
Atlas cartography
Special topic - Toponymy

PRESENTER 2

Map production using GIS
Prepress design and layout using GIS

Computer assisted cartography using ArcGIS
Special topic - 3D GIS

WEEK 2 (August - Monday 2nd - Friday 6th)

PRESENTER 3

GIS visualisation
Web cartography
Web-based cartographic research
Special topic - Geographic/geospatial education using ICT

PRESENTER 4

GIS & Cartography on the web
Geospatial Information Science
WebGIS
Special topic - tba

Workshop Vietnam 2010

The following workshop has been organised by the CET

VIET NAM – HO CHI MINH CITY WORKSHOP on 19th to 30th July.

Workshop I: 19-23 July 2010

Cartographic Information Systems (GIS with a cartographic emphasis)
Internet Mapping
Atlas production
Prepress and Digital Printing
(Other specialist topics to be added if deemed appropriate)

Workshop II: 26-30 July 2010

Digital Generalization
3D maps and Geovisualization
Multimedia products
Location Base Services
Cartographic Animation and Dynamic maps
Navigational Maps

CET Workshops – Generic Guidelines

The ICA Commission on Education and Training plans to continue to offer the cartography workshop in the future. An invitation will be extended to selected ICA member nations each year in the hope that the workshop model can be adapted and adopted to the benefit of cartographers in nations requiring such an input. Guidelines have been produced for the workshops. They can be found at the CET website <http://lazarus.elte.hu/cet/> under the “Cartographic Workshops” tab.

ICA Conference – Paris - 2011

Symposium (workshop) – Paris 2011

A workshop "Looking to the future: maps for the education and children" is being organised for prior to the ICC2011. At present, the participation of the Commission on Cartography and Children and the Commission on Education and Training has been confirmed. Dr. Jesus Reyes and Dr Laszlo Zentai are the key organising team with Dr. Elisabeth Chesneau as the French connection.

Review of Cartographic Education and Training papers for ICC2011 in Paris

The Commission will review the cartographic education and training papers presented for consideration for the ICC2011 conference. Commission members Dr. John Kostelnick and Dr Elisabeth Chesneau have kindly offered to take on the role of reviewers.

Biennial Awards on Educational Cartography

Feedback has been received on the awards document from CET members. The document has been amended and approved by the Executive. Ms Elisabeth Chesneau translated the original English version into French. Both versions have been forwarded to the ICC2011 organising committee. Copies have been placed on the CET website [[http://lazarus.elte.hu/cet/.](http://lazarus.elte.hu/cet/)]

Le concours a pour objectif de promouvoir les bonnes pratiques pour la conception et la réalisation de ressources cartographiques dans un contexte éducationnel.

The competition aims to promote good practice in relation to the design and realisation of cartographic resources produced in an educational context.

ICA Research Agenda – CET Contribution

Discussion Paper

The following paper has been written for the ISPRS Commission VI, Mid Term Symposium, Enschede, June 2010

THE ROLE OF INTERNATIONAL GEOMATICS ORGANISATIONS IN THE PROMOTION OF CONTINUING PROFESSIONAL DEVELOPMENT (CPD)

David Fairbairn^{a, *}, David Fraser^b

^a School of Civil Engineering & Geosciences, Newcastle University, Newcastle upon Tyne NE1 7RU, UK
dave.fairbairn@newcastle.ac.uk

^b School of Mathematical & Geospatial Sciences, Royal Melbourne Institute of Technology University, Melbourne 3001, Australia david.fraser@rmit.edu.au

The nature of CPD is considered: the process is modelled and each component is examined in the context of geomatics. Firstly, the type of person and institution interested in CPD (the consumer) is addressed. Secondly, there is a range of suppliers of CPD resources including commercial companies, educational establishments or international learned societies. Thirdly, the material delivered also forms part of the model: there a wide range of content, available material, and dissemination method.

Cartographic Resources

David Rumsey Map Collection

" Map Collector David Rumsey shows how his increasing use of digital technologies and the Internet over the past decade has transformed his work as a historical map scholar and collector. Using imaging software, GIS, and popular applications like Google Earth and Second Life, Rumsey has given new life to old maps, both in their dissemination and our ability to analyze and understand them, thereby unlocking the information held in maps for use in a wide range of disciplines. He will discuss and demonstrate how he offers these software tools and a growing number of digitized maps themselves on his free public online map library at www.davidrumsey.com "

<http://www.youtube.com/watch?v=iYytml2i1tE&feature=related>

Where2.0 2010

<http://www.youtube.com/watch?v=UWj8qtlvkkq&feature=related> where Jack Dangermond and others presented.

Geography Tutor - Types of Maps and Map Projections

<http://www.youtube.com/watch?v=Al36MWAH54s&feature=related>

Map Skills: Using Maps Together

http://www.youtube.com/watch?v=l2HmL_enx94&feature=related

Geography Seasons

http://www.youtube.com/watch?v=taHTA7S_JGk&feature=related

Airplane Tracking in Second Life

<http://www.youtube.com/watch?v=BMH2-rCkz3Y&feature=related>

Expanding Earth Theory – Forming of Mountains

<http://www.youtube.com/watch?v=nfgkm0eBGsc&feature=related>

Alternative World Maps

<http://www.youtube.com/watch?v=cuuluAq4TtU&feature=related>

Visualization of dialect geography data with a geo-browser

<http://www.youtube.com/watch?v=vCArZZkFakM&feature=related>

ESRI Mapping Center (select a web link)

- [ArcGIS Methods](#)
- [Cartographic Concepts](#)
- [Cartographic Effect](#)
- [Cartographic Representations](#)
- [Data Modeling](#)
- [Map Data](#)
- [Map Elements](#)
- [Page Layout](#)
- [Publishing](#)
- [Symbology](#)

[Geo-Geneology of Irish Surnames](#) ★★★★★☆

[Simultaneously displaying hillshades of multiple resolutions and extents](#)

[A Concise History of Bump Mapping](#) ★★★★★☆

[Symbolizing trees in ArcGIS: assigning each species a different symbol](#)

[Globe locator map](#) ★★★★★★

[Symbolizing shorelines](#) ★★★★★☆

[Bad maps are bad for business](#) ★★★★★☆

[Making maps with unfit data](#) ★★★★★☆

[Hillshades for analysis maps](#) ★★★★★☆

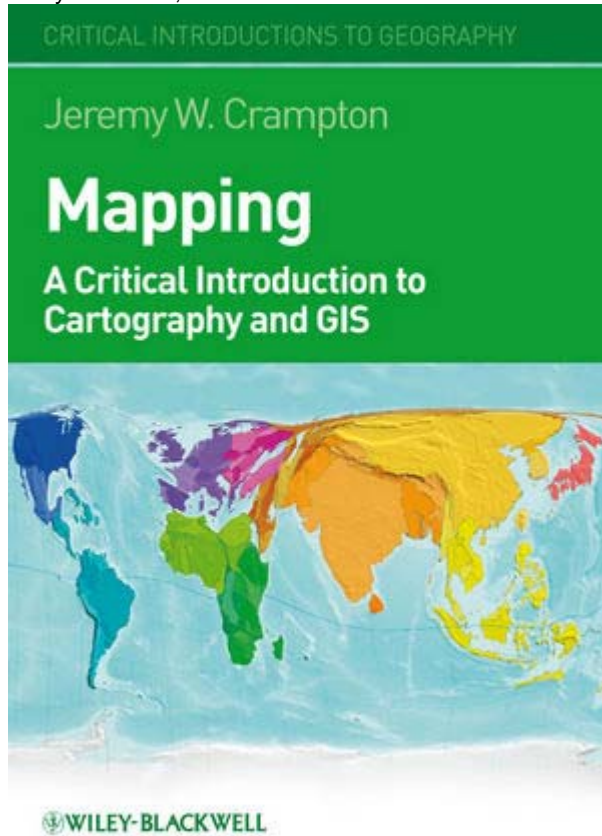
<http://blogs.esri.com/Support/blogs/mappingcenter/archive/tags/Cartographic+Design/default.aspx>

Mapping and GIS

By Yun Zhang | Published: April 13, 2010

Are you interested in critical issues around mapping and Geographic Information Systems (GIS)? If so, you may want to check out Dr Jeremy Crampton's new book: [Mapping: A Critical Introduction to Cartography and GIS](#).

Wiley-Blackwell, 2010. Call number: GA102.4.E4 C73 2010.



Follow the library's [book record link](#) to check the status and location of the book.

Dr Jeremy Crampton is an Associate Professor in the Department of Geosciences. He teaches digital cartography and political geography.

<http://homer.gsu.edu/blogs/library/2010/04/13/mapping-and-gis/>

Opportunities

Fifth National Cartographic Conference GeoCart'2010

The fifth National Cartographic Conference GeoCart'2010 and the first ICA Symposium on Cartography for Australasia and Oceania will convene in Auckland, 1-4 September 2010. It will be held at the outstanding facilities of The University of Auckland (www.auckland.ac.nz) in the City of Sails - Auckland, New Zealand. The Conference is endorsed by the International Cartographic Association (ICA) (www.icaci.org).

The confirmed keynote speakers include:

- Cynthia Brewer, Pennsylvania State University, USA
- Manfred Buchroithner, TU Dresden, Germany
- William Cartwright, RMIT University, Australia, President of the ICA
- Phil Allen, GeoSmart, New Zealand
- David Crossman, Geospatial Intelligence Organisation, Royal New Zealand Navy, New Zealand
- Colin MacDonald, LINZ, New Zealand

The Conference website address is:

http://www.cartography.org.nz/dev/index.php?option=com_content&view=section&id=17&Itemid=91

Maps and the Internet Commission - Symposium

The annual meeting of the Maps and the Internet Commission will take place November 19, 2010 in Orlando, Florida, in association with AutoCarto 2010. If you plan to attend, please reserve a space at: <http://orlando2010.eventbrite.com/>

The symposium is scheduled at the end of the AutoCarto 2010 meeting in Orlando, Florida. AutoCarto 2010 will take place November 15-18, 2010. You may decide to submit a paper for that meeting as well as for the symposium. The call for papers is attached. Abstracts for papers and posters are due May 1.

The focus of the symposium will be on Online Maps with APIs and Webservices and papers will appear in planned book to be published in 2011. The book will examine current and future developments in Application Programmer Interfaces (APIs) for mapping and MapServices in general, including Google Maps API and similar services. The book is to be published in 2011 by the Maps and the Internet Commission along with the Working Group on Open Source Geospatial Technologies of the International Cartographic Association.

Prof. Michael P. Peterson

Chair, International Cartographic Association Commission on
Maps and the Internet (<http://maps.unomaha.edu/ica/>)

“Mapping” Environmental Issues in the City: Arts and Cartographic Cross Perspectives - Workshop

A workshop entitled “Mapping” Environmental Issues in the City: Arts and Cartographic Cross Perspectives" will take place in Montréal at Concordia University from Sept. 8th to Sept. 10th 2010.

Artists, Cartographers and others interested in this topic are invited to submit a proposal (Note: The deadline is past, but there are still a few spots available).

More information is available at:

<http://mappingworkshop.wordpress.com/call-for-proposals/>

Cartography in the media

GPS Options: Many Ways to Find Your Way

Craig Ellison

Apr 28, 2010 11:15 am

[PCWorld](#)

We compared five best-of-breed navigation systems--in your phone, on your dash, or built right into your car--to see which ones do the best job of pointing you in the right direction.



Go to link:>

http://www.pcworld.com/article/195002/gps_options_many_ways_to_find_your_way.html

Map highlights new California earthquake faults

April 27, 2010 | 3:03 pm

[L.A. Now](#)



More than 50 new surface earthquake faults have been discovered in California over the last two decades, according to [a new state map](#) that officials hope will help guide future development decisions and emergency planning.

The state's fault activity map, produced by the California Geological Survey, is the first in 16 years and offers a sober reminder of California quake risks.

Go to link:>

<http://latimesblogs.latimes.com/lanow/2010/04/map-highlights-new-california-earthquake-faults.html>

Maps - the new rock'n'roll

What on earth? Thanks to two new BBC series and a major exhibition, cartography is becoming cool.

By Andrew Pettie
Telegraph.co.uk
Published: 4:18PM BST 16 Apr 2010



The Klencke Atlas, the world's largest book Photo: BBC

In our endlessly charted 21st-century world, with Google Earth photographing every crack in the pavement, it is tempting to believe that maps are our obedient and objective servants, designed with the sole purpose of guiding mankind from A to B. But is this really the case? In a fascinating new season of programmes on BBC Four, two academics will try to expose modern misconceptions about cartography and thereby redraw the map of maps.

As Head of Map Collections at the British Library, Peter Barber, 61, is the proud curator of some 4.5 million atlases, maps, globes and cartographic books. On 30 April, the library will open a splendid new (and free) exhibition, [Magnificent Maps: Power, Propaganda and Art](#). It includes everything from the world's largest book, The Klencke Atlas, which was drawn up in 1660 for Charles II as a summary of the world's knowledge, to a Nazi propaganda poster printed in 1944 depicting Churchill as a grasping imperial octopus.

"Most people think of maps as utilitarian objects," says Barber, "and aren't used to the idea that they can also function as decoration or propaganda. Some of the maps in the exhibition are pictorial encyclopaedias, about far more than just geography."

Go to link:>

<http://www.telegraph.co.uk/culture/tvandradio/bbc/7598431/Maps-the-new-rocknroll.html>

Google Earth Unearths Ancient Human Ancestor

By [Thomas Claburn](#)

Read the Original Article at [InformationWeek](#)

April 08, 2010 (02:07 PM EDT)

Google Earth has helped scientists locate a rare hominid fossil dating back almost 2 million years, a discovery that company chief technology advocate Michael Jones hails as one of the most significant palaeoanthropological finds in recent times.

Google is thrilled and delighted that its free mapping tools have contributed to the exploration and knowledge of the world, said Jones in [a blog post](#). "With these tools, places both foreign and familiar can be explored with the click of a mouse, allowing for new understandings of geography, topology, urbanism, development, architecture and the environment."

Go to link:>

<http://www.techweb.com/article/showArticle?articleID=224202341>

3D Laser Mapping Scans Glacial Terrains to Predict Rock Fall Hazards

The latest laser scanning and remote controlled aircraft technology are to be used to monitor glaciers where unstable slopes and rock falls are a continual threat. A special long range scanner, capable of measuring tiny movements over a 2km range, is being supplied by 3D Laser Mapping for the research by the University of Northumbria. Scan data will be used to help create 3D maps using low level aerial photographs captured by an Unmanned Aerial Vehicle (UAV).

The laser scanner will be used on a range of projects including the monitoring of retreating glaciers in the European Alps and the investigation of rock falls in the Southern Alps of New Zealand. Selected by the University of Northumbria to enhance research, teaching and Enterprise activity in the School of Applied Sciences, the Riegl LMS-Z620 can obtain 10mm accuracies at distances of up to 2km.

Go to link:>

<http://www.geoplace.com/ME2/dirmod.asp?sid=&nm=&type=MultiPublishing&mod=PublishingTitles&mid=13B2F0D0AFA04476A2ACC02ED28A405F&tier=4&id=0E6B20D620374E2A87343A69B10110F2>

Maps will always have mileage

Wednesday, 14 April 2010

The Independent



GETTY IMAGES

The introduction of Sat Navs and mobile technology has made getting lost a thing of the past

When was the last time you were well and truly lost? For those of us who own a smartphone, satnav or laptop, the answer may be quite some time ago. The streets we walk are endlessly documented online, the countryside is comprehensively mapped and even the most winding country lane has had its dimensions captured by the TomToms and Garmins of this world.

Even the trusty Ordnance Survey has just announced its presence online. But does this proliferation of digital data mean a golden age of mapping or is it the end of an era for the paper maps that have helped us around the world – and back again – for centuries?

With the increasing technological sophistication of free online applications such as Multimaps, MapQuest, and Google's ubiquitous applications Earth, Maps and Street View to help us find our way, wherever we are, the Ordnance Survey has finally bowed to the inevitable and published most of its maps for free online. OS was not only losing its market but also its reputation as the nation's most reliable and innovative supplier of maps. Ever since Gordon Brown's declaration in November that OS material should become freely available, the pressure on the OS to release its data had become irresistible, despite opposition within its ranks. But something had to be done.

Go to link:>

<http://www.independent.co.uk/life-style/gadgets-and-tech/features/maps-will-always-have-mileage-1943832.html>

Online Ordnance Survey maps are a treasure

The mapping revolution has had a breakthrough. But too many Ordnance Survey jewels are still locked away

Ben Macintyre
From The Times
April 6, 2010

When *Apollo 17* sent back the “blue marble” photograph of the Earth in 1972, the world was suddenly able to see itself in a new way, as a great glassy orb laced with cloud. But Houston had a problem. In the original image, the South Pole was at the top of the picture. The world was turned upside down.

How would this play in North America, which has always considered itself, in more ways than one, on top of the world? For public consumption, Nasa quietly rotated the photo, to ensure that the picture fitted with the map, and America’s notion of its place on the globe. Maps are reflections of power: defining home and abroad, what is mine and what is thine, the known and unknown.

Go to link:>

http://www.timesonline.co.uk/tol/comment/columnists/ben_macintyre/article7088278.ece

Theodolite-wielding geodesists

Friday, April 02, 2010
Posted by Jenny Davidson at [12:34 AM](#)

At the Independent, Jonathan Brown on the history of the Ordnance Survey as its maps go online:

According to Dr Richard Oliver's *A Short History of the Ordnance Survey of Great Britain*, the first modern maps took shape between 1747 and 1755. Their instigator was an ambitious military officer named Colonel David Watson, who served with the Army and also the Engineers of the Board of Ordnance. The painstaking work was carried out by the Lanarkshire-born surveyor William Roy, who went on to become the father of modern cartography, and the pioneering water colourist Paul Sandby, who helped turn the first maps into beautifully realised artworks. It was a primitive process by modern satellite-driven standards. The contour line was yet to be invented, and all distances were measured by 66ft lengths of chain.

Go to link:>

<http://jennydavidson.blogspot.com/2010/04/theodolite-wielding-geodesists.html>

Aircraft to collect mapping data

2010-04-15 14:52 BJT
Special Report: [7.1-magnitude Quake Hit Qinghai, China](#) |

The State Bureau of Surveying and Mapping has sent a pilotless aircraft for remote sensing to the quake zone.

The plane is equipped with a high-precision remote sensing camera. It can distinguish people's faces from a high altitude.

Experts say the aircraft will collect geographical information to aid relief work.



The State Bureau of Surveying and Mapping has sent a pilotless aircraft for remote sensing to the quake zone. (CCTV.com)

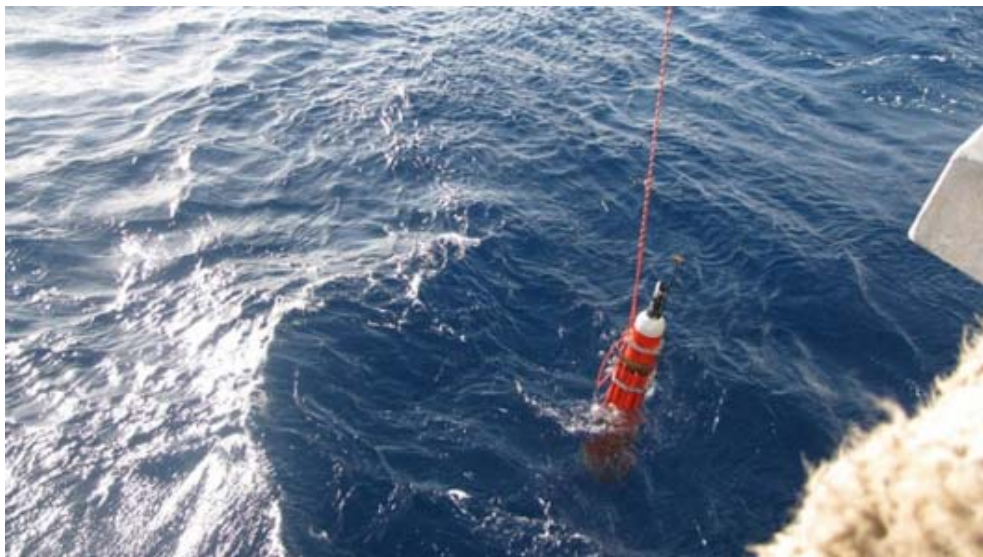
Go to link:>

<http://english.cctv.com/program/newshour/20100415/103852.shtml>

New Thermal Charging System to offer Infinite Life to Ocean Mapping Robot

by George Delozier
Motorized Innovations
InventorSpot.com

Deep ocean mapping and exploration has posed a unique and seemingly impossible challenge to scientists. While autonomous aquatic robots have proved to be instrumental in solving this problem, they require careful monitoring and maintenance to ensure they last as long as possible. However, a new design may be able to remove the need for constant check-ups and offer over three months of uninterrupted exploration.



Go to link:>

http://inventorspot.com/articles/new_thermal_charging_system_offer_infinite_life_ocean_mapping_ro_40158?utm_source=feedburner&utm_medium=feed&utm_campaign=Feed%3A+inventorspot%2Farticles+%28Inventor+Spot+Articles%29

Keep it in the Family

Family maps out a future in cartography

Founders of Etobicoke-based MapArt passing company over to their son

InsideToronto.com
CYNTHIA REASON
Apr 07, 2010 - 3:48 PM



Couple maps out a future in cartography. Hartmut Schwerdt, Rita Schwerdt, and Gordon Woit of MapArt pose with the latest map book for Toronto and area. The company makes maps for cities and towns across Canada with a population of 5,000 or over, giving users detailed directions and accurate landmarks, making finding your way easy. *Staff photo/ANICE WONG*

Hart and Rita Schwerdt started MapArt in 1975 with little more than a homemade light-table, a Volkswagen Beetle, and a dream of providing for their family.

True to that vision 35 very successful years later, the Schwerdts, both 70, are handing the reins of their family-run mapmaking empire - now Canada's leading creator and producer of maps with 70 per cent of the market share - over to their son, Gord.

The MapArt story begins in the early 1960s, when Hart, a gifted German cartographer, was brought to Canada to work for Toronto-based lithographic and fine printing company Rolph-Clark-Stone. He met Rita, who was on a one-year working visa at the University of Toronto, at a dance at the German Club - and the rest, as they say, is history.

Go to link:>

<http://www.insidetoronto.com/news/local/article/661280>

Conferences

Geospatial Visual Analytics: Focus on Time

11 May 2010

Guimarães, Portugal

<http://geoanalytics.net/ica/>

UN-SPIDER Regional Workshop Building upon

Regional Space-based Solutions for Disaster Management and Emergency

Response for Africa to take place from 25 to 28 May 2010 in Addis

Ababa, Ethiopia.

<http://www.un-spider.org/workshop-addis-2010>

3rd International Conference on cartography and GIS

June 15-20 2010
Nessebar, Black Sea, BULGARIA
www.cartography-gis.com

ISPRS Commission VI Cross-Border Education for Global Geo-Information,

June 2-4, 2010.
Mid-Term Symposium
Enschede, Netherlands
<http://www.itc.nl/isprsc6/symposium2010/>

BCS Symposium 2010 - Call for papers

June 9th – 11th 2010
British Cartographic Society Symposium “Talking With Maps”.
Village Hotel and Conference Centre in Nottingham
<http://www.cartography.org.uk/default.asp?contentID=933>

GI_Forum 2010

July 6-9, 2010
Symposium and Exhibit
Applied GeoInformatics
Salzburg
Learning with Geoinformation
Special Focus: Spatial Citizenship
Symposium & Vocational Training
Within the framework of GI_Forum 2010
July 7-9, 2010 – Salzburg, Austria
www.gi-forum.org/learning

IGU Commission on Geographical Education – CGE Symposium -2010)

July 8-10, 2010
Fatih University
Istanbul, Turkey.
<http://igucge2010.fatih.edu.tr/>

ESRI Business GIS Summit

July 11-12, 2010
San Diego, California
Will bring business professionals and industry leaders together to discuss the key advantages of a geoenabled organization.
<http://www.esri.com/events/business/index.html>

Interdisciplinary CODATA Workshop on RISK Models and Applications

August 26/27, 2010
Berlin, Germany,
http://www.codata-germany.org/RMA_2010/

Seventh European GIS Education Seminar

September 9-12, 2010
Serres, Greece
A specialist meeting on GIS education in Europe
www.eugises.eu

7th ICA Mountain Cartography Workshop

Mountain Mapping and Geospatial Information Retrieval
1–5 September 2010
Borsa, Romania
<http://www.mountaintography.org/>

GeoCart'2010

ICA Symposium on Cartography for Australasia and Oceania

1-4 September 2010
Auckland, New Zealand

The fifth National Cartographic Conference GeoCart'2010 and the first ICA Symposium on Cartography for Australasia and Oceania will convene in Auckland,.

<http://www.cartography.org.nz/geocart2010/index.htm>

7th Symposium on LBS and TeleCartography

20-22 September 2010
Guangzhou, China.

Go to link >

<http://www.lbs2010.org/>

3rd International Symposium of the ICA Commission on the History of Cartography

10-13 October 2010
University of Texas in Arlington, USA

The Symposium will be held in conjunction with the 7th Biennial Virginia Garrett Lectures on the History of Cartography (Friday, 8 October 2010) and the Fall Meeting of the Texas Map Society (Saturday, 9 October 2010);

www.icahistcarto.org

AutoCarto 2010

November 15-18, 2010
Orlando, Florida

Sponsored by the Cartography and Geographic Information Society (CaGIS), The 18th in the series, this international research symposium on computer-based cartography and GIScience will be held in conjunction with the American Society for Photogrammetry and Remote Sensing (ASPRS). The International Cartographic Association and the International Society for Photogrammetry and Remote Sensing (ISPRS) Technical Commission IV: Geodatabases and Digital Mapping will also hold a number of commission meetings at AutoCarto 2010.

The focus of this joint meeting is **Geospatial Data and Geovisualization for the Environments, Security, and Society**.

<http://www.cartogis.org/autocarto>

The Use of GIS and Remote Sensing for Sustainable Development

29th Nov-03rd Dec, 2010
Tunis

We have the honour to invite you to participate in the events of **GEOTUNIS International Congress 2010** in its 5th Edition from 29 November to 03 December, **2010 in Tunisia** Centred under the theme "**The use of GIS and remote sensing for sustainable development**". A fifth **GeoTunis session** in front of distinguished scientific users of GIS and remote sensing for the most recent experiments and applications in scientific fields.

The congress will include 4 major scientific themes that address the various uses and applications of geographic information systems as well as numerous practical workshops supervised by the major international institutions active in the field.

www.geotunis.org

25th International Cartographic Conference

3-11 July 2011
Paris, France

Open to researchers, engineers, students, data producers and software suppliers, the ICC 2011 will be held from 4th to 8th July 2011 at the Palais des Congrès in Paris, with simultaneous proceedings in eight meeting rooms. This conference will consider the most

wide-ranging issues involving cartography and geomatics. In addition to oral presentations, sessions will be organized for the presentation of work in the form of poster displays.

Go to link >

<http://www.icc2011.fr/>

NOTE: If you are involved in a workshop, symposium or conference related to cartography please send me brief details for the newsletter.

Odd Spot

Tempesta di Mare plays "Lamentations" by Zelenka, a Bach contemporary.

By Daniel Webster
Philadelphia Inquirer

Posted on Tue, Mar. 30, 2010

Leipzig and [Dresden](#), so near geographically, were polar opposites in baroque musical cartography. In Leipzig, Bach, while aspiring to a royal appointment in Dresden, still sculpted crystalline cantatas cut from Protestant exactitude but infused with humanist emotion. In Dresden, Jan Dismas Zelenka, Bach's Czech contemporary, molded works of parallel craft, yet aimed at theatrical gesture for the newly Catholic court. Finding sure footing in that shifting ecclesiastical landscape might have boggled lesser men, but both determinedly produced full catalogs of music fundamental to any understanding of the whole of music's history.

Go to link >

http://www.philly.com/inquirer/magazine/20100330_Baroque_airs_for_Holy_Week.html

456 – Maps of Murder: Dell Books and 'Hard-Boiled' Cartography

Strangemaps @ 1:35 am

April 11, 2010

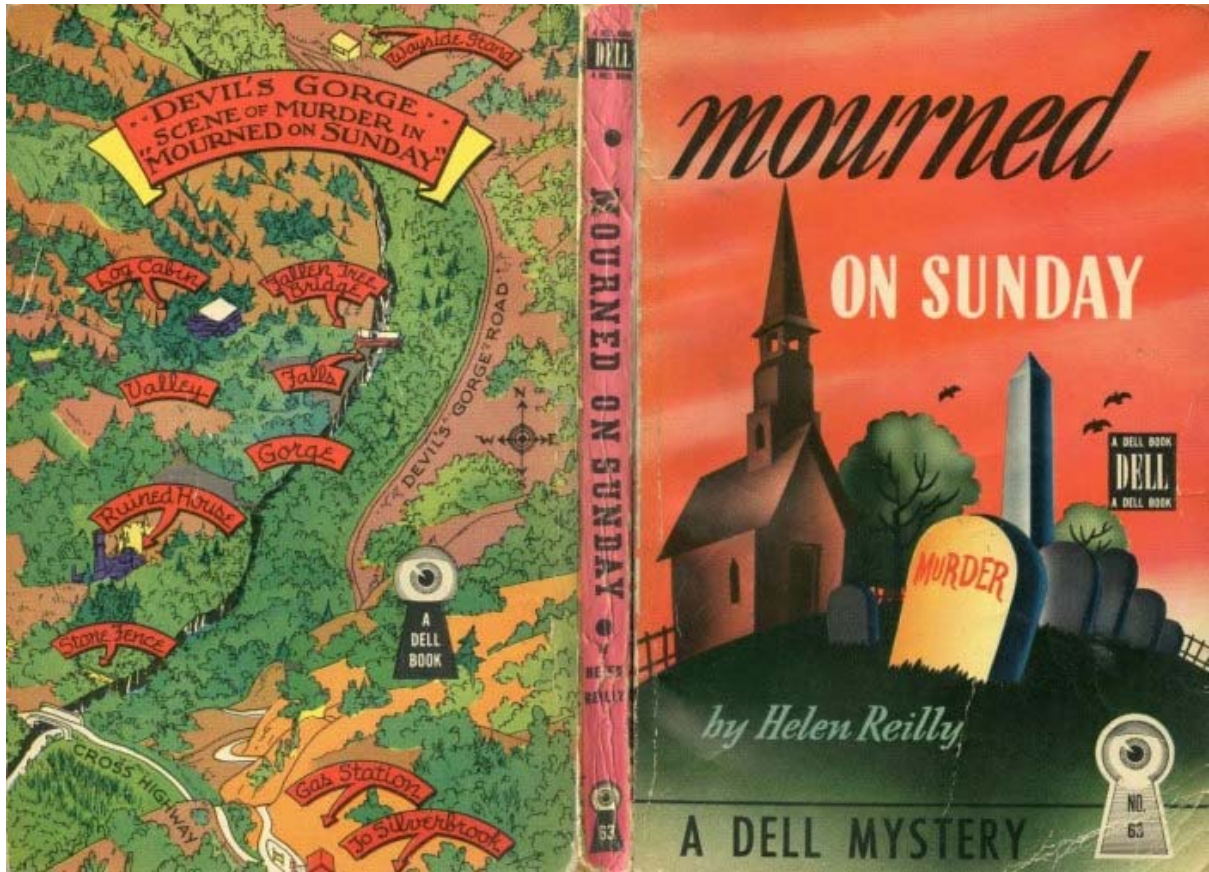
Dell Books, the American series of pulp fiction books, featured many genres, but most of all the detective story. Prominently featured were the maps on the back cover, setting the scene for the adventures and crimes within the covers. An amazing grand total of 577 'Map Backs' were published during the lifespan of the series, from 1943 to 1952.

The subject of the maps would naturally reflected the setting of the story (more often than not a murder mystery), and could be anything from the diagram of a multistorey building to the layout of a city or state – fictional or not – as the scene of the action.

The series published work by Agatha Christie, the grande dame of English crime literature; Dashiell Hammett, pioneer of the hard-boiled detective story; and Erle Stanley Gardner, creator of Perry Mason (writing as A.A. Fair), among others. In 1983, Greenwood Press published William H. Lyles' *Putting Dell on the Map – A History of the Dell Paperbacks*. This scholarly work helped cement the reputation – and collectability – of the Dell paperbacks.

Here is a sample of a Dell Map Back:

Helen Reilly: *Mourned on Sunday* (Dell #63)



<http://strangemaps.wordpress.com/2010/04/11/456-maps-of-murder-dell-books-and-hard-boiled-cartography/>