

International Cartographic Association
Association Cartographique Internationale

Commission on Education and Training

OCTOBER 2009



An occasional electronic newsletter for members of the Commission.

If you have any brief items of interest to fellow CET members then please email them to david.fraser@rmit.edu.au for eCET.

If you have more substantial articles please send them to Igor Drecki at i.drecki@auckland.ac.nz for the ICA newsletter.

-----000000-----

"Maps, to the layman at least, serve as reassurance to man that indeed the little plot he walks on is part of some greater whole; part of some grand design which maps allow him better to understand."
(Sir Ninian Stephen, 1984)

Conferences Update

Proposed ICA Symposium on Cartography for Australasia and Oceania / GeoCart'2010

1-4 September 2010 (Wed-Thu-Fri-Sat)
University of Auckland, Auckland, NZ
(Pencil this in your diary – more details later)

PCV 2010 – Photogrammetry Computer Vision and Image Analysis Conference

ISPRS Technical Commission III Symposium
September 1-3, Paris France

PCV is an ISPRS selective conference covering all the aspects of computer vision and image analysis dealing with geomatics data (or geographic data). Papers in the main technical program must describe high-quality, original research and will be presented either orally in a single track or as a poster.

(<http://pcv2010.ign.fr>)

Digital Earth Summit,

12-14 June 2010
Nessebar, Bulgaria

3rd International Conference on cartography and GIS

15-20 June 2010
Nessebar, Black Sea, BULGARIA
www.cartography-gis.com

58th German Cartographers Day 2010

Berlin and Potsdam
June 8-10, 2010

The German Cartographic Society (Deutsche Gesellschaft für Kartographie e.V., DGfK) and its Berlin-Brandenburg Section invite you to actively participate in the 58th German Cartographer's Day 2010 (Deutscher Kartographentag / DKT 2010).

Contributions are welcome in English or German language.

We offer an ideal platform to exchange experiences between experts and decision-making units coming from companies, universities, research institutions and administration all located within the broader domain of Cartography and Geoinformatics.

<http://dkt2010.dgfk.net/>

ISCRAM2010

Defining Crisis Management 3.0

7th International Conference on Information Systems for Crisis Response and Management

May 2-5 2010

Crowne Plaza Hotel Seattle Washington USA

Geo-Information Support for Crisis Response and Management

www.iscram.org

ICA CET Member Country News Items

Czech Republic - Report

I thank Associate Professor. Vaclav Talhofer, CET member and the Czech Cartographic Society member, for the following examples of the cartographic activities in the Czech Republic in autumn 2009, focused on the activities of young people.

Student GIS project

More than 30 students of the Czech universities came together for a professional competition to present their cartographic and GIS thesis on September 29th. The traditional competition called *Student GIS project* was held as part of the 18th Czech and Slovak Cartographic Conference within its pre-conference activities. The ESRI technology was a common aspect of all projects. A high level of cartographic skill appeared in a wide scope of maps, map servers and atlas layouts. The three best works were acknowledged by the Czech Cartographic Society.



Fig. 1 The auditorium of the Student GIS Project (photo by O. Ruzicka, UP Olomouc)

18th Czech and Slovak Cartographic Conference

The Czech and Slovak cartographers met on the traditional Cartographic Conference on September 30th to October 2nd 2009. The 18th conference with the motto “*Quo Vadis Cartography?*” was held in one of the oldest cities of the Czech Republic, Olomouc. The Palacky University, Department of Geoinformatics organised a very successful professional and social meeting where more than 170 attendees were able to listen to interesting papers and also engage in discussion with colleagues.



Fig. 2 18th Cartographic Conference in the Czech Republic (photo by O. Ruzicka, UP Olomouc)



Fig. 3 Quo Vadis, Cartography? (photo by O. Ruzicka, UP Olomouc)

Within the conference program an exhibition of old and present map works was organised. The conference was open for pupils and students from elementary and secondary schools as well. Over 500 children came to see many aspects of map production - from historical pieces (nautical atlas from 1563, globes from 1640) to modern cartographic products (lenticular maps, map servers, virtual globes, 3D tactile maps). This was a very impressive exhibition, with guidance provided by university students, was a great presentation of cartography. Children also had the chance to listen to selected scientific presentations in conference programme.



Fig. 4 Children and ancient atlas (photo by O. Ruzicka, UP Olomouc)



Fig. 5 Children and present cartographic products (photo by O. Ruzicka, UP Olomouc)

This report was prepared by Professor. Vit Vozenilek and Associate Professor. Vaclav Talhofer, of the Czech Cartographic Society. In Brno October 10th 2009

HUNGARY REPORT

Many thanks to Professor Laszlo Zentai, Eotvos University, Department of Cartography and Geoinformatics for this report.

Cartographic activities - Hungary

Bologna process, MSc in cartography

After the 1990 political reforms, it took several years until Hungary officially signed the Bologna Declaration (1999). The progress was very slow: the implementation of the Bologna principles only started in 2002. The nation-wide introduction of the BA and BSc system began in 2006. The new system is now complete with the start of training at MA and MSc levels in autumn 2009. Students interested in cartography can obtain an MSc degree at Eötvös Loránd University, Budapest. The first students at the master level have just started their studies. The subjects with a total value of 120 credits are classified into modules which are as follows with their credits:

Geodesy (12), Cartographic visualization (28), Geoinformatics (26), Cartography technology (23), Other cartography subjects (9), Optional subjects (6), Degree thesis (16). All these modules have been managed by the Department of Cartography and Geoinformatics only. The students have to take part in a two-week field trip or practical placement at an institution or firm.

The teaching staff of the Department is largely responsible for the specialization in cartography at bachelor level and fully responsible for the training of cartographers at master level. The staff is highly qualified, which is demonstrated by the following facts. There are three professors, and of them, Prof. Klinghammer is a member of the Hungarian Academy of Sciences and of the German Academy of Sciences Leopoldina. He was also the rector of the university for more than six years. Prof. Zentai, one of the authors of the present paper, is the Vice-Rector for Education of the university. The third one, Prof. Márton received the title in September 2009. The number of associate professors is five, and that of assistant professors is three. The department employs a librarian, three technical workers and one administrator. Further information on the Department is available at <http://lazarus.elte.hu/index-e.html>.

Descriptio Transylvaniae

An International Conference on History of Cartography and Historical Geography was organized in Cluj-Napoca (Romania) by the Society of Geography "Jenő Cholnoky" Babes-Bolyai University. The conference concentrated on the following topics: Map Collections in Transylvania, Transylvania represented on Maps, Changes of the Landscapes, Changes in the Perception of the World, The Language of the Maps, The Linguistic Maps. The conference proceeding was published. See <http://cholnoky.ro/content/view/202/193/lang,en/> for more details.

International Conference on Orienteering Maps (ICOM)

The 13rd International Conference on Orienteering Mapping was organized in Miskolc, Hungary in August. The conference was connected to the World Orienteering Championships. There were about 30 participants from 12 countries. The main topics were the new orienteering map specifications, the laser scanning technology, internet map portals for orienteering maps. More details on <http://lazarus.elte.hu/mc/13icom/13icom.htm>.

Alexander Radó Conference



110 years Anniversary of Alexander Radó's birth was celebrated on a Conference organized by the War History Institute and Museum. Alexander Radó was the first cartographer who got the ICA Honorary member award. He was the chairman on Commission on Thematic Cartography between 1972-76 and a chairman on Commission on Mapping of Natural Resources between 1976-80. It was decided by the ICA in 1974, but it was presented only on the 80th birthday of Radó, in 1979.

ICA News - 50th Anniversary Special Edition

Well worth a look is this - Special Issue of the ICA News commemorating the 50th Anniversary celebrations of the ICA held in Bern, 9-10 June 2009 is now available from the 'Newsletter' section of the ICA website (Go to link below).



Participants of the 50th Anniversary of the International Cartographic Association meeting in Bern, Switzerland, 9-10 June 2009 | *Photography Thomas Maag*

<http://cartography.tuwien.ac.at/ica/index.php/Newsletter/Newsletter>

Cartography – The Road to Becoming a Billionaire?

Wealthiest Americans lose billions but “cartographer” makes the rich list

The top 400 richest people in the US have seen their collective wealth plummet by £188 billion over the last year

Francesca Steele
From Times Online
September 30, 2009

Plummeting property prices and faltering capital markets, as well as fraud and divorce, have caused a significant dent in the bank balances of the super-rich over the last year, although Bill Gates managed to retain his position at the top.

Among the 19 new entrants taking up the vacant spots on the list are Isaac Perlmutter, the Marvel Entertainment chief, in at No 230, and **the mapping software magnate Jack Dangermond in at No 158.**

http://business.timesonline.co.uk/tol/business/industry_sectors/article6856357.ece

Cartography in the Media

Autism Gift – New York from memory.

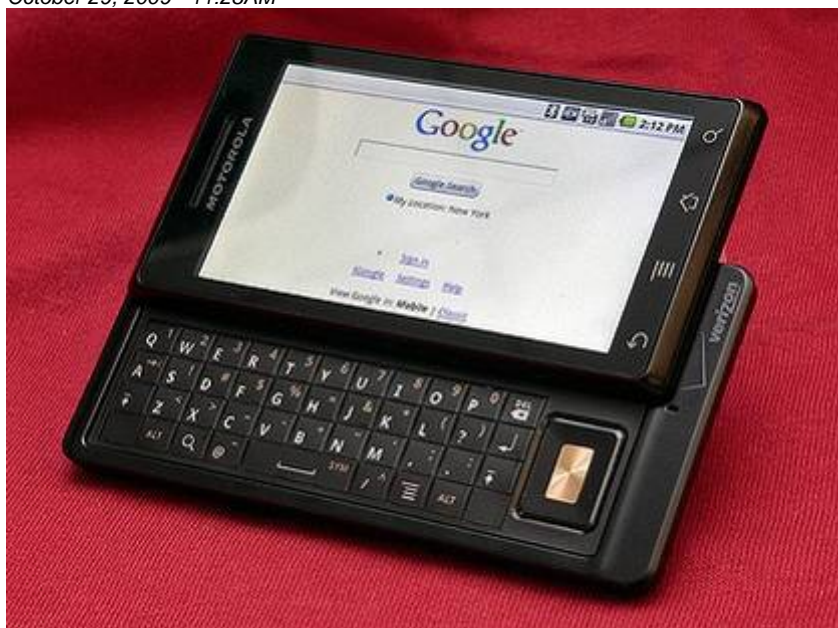
After a short helicopter ride over New York, Steven Wiltshire is sketching a six metre panorama of the Manhattan skyline from memory. The London based artist has already sketched Sydney, London and Los Angeles from memory.



Source: The Age electronic – Tuesday 27th October, 2009

Google unveils GPS for android phones

The Age - AFP
October 29, 2009 - 11:28AM



Motorola Droid ... the first smartphone to feature Google Maps Navigation. *Photo: AP*

Google has unveiled a free navigation system for mobile phones in a move seen as a potential challenge to the makers of standalone GPS navigation devices.

"Global positioning devices were already on the road to becoming irrelevant and Google Maps Navigation for Android 2.0 may speed up the trip," wrote Larry Dignan, editor-in-chief of technology blog ZDNet.

<http://www.theage.com.au/digital-life/cartech/google-unveils-gps-for-android-phones-20091029-hlza.html>

NASA to begin massive climate survey of Antarctica

October 9, 2009

The Age

© 2009 [AFP](#)

NASA next week begins the most extensive aerial survey of Earth's surface to chart the impact of global warming, with six years of flights over Antarctica to understand the frozen continent's glaciers and ice sheets.

The US space agency said the massive aerial survey, part of a program dubbed Operation Ice Bridge, will get underway on October 15.

Data gathered during the mission will help scientists predict how changes to the massive Antarctic ice sheet will contribute to a rise in sea levels around the world.

Researchers will work from NASA's DC-8, an airborne laboratory equipped with laser mapping instruments, ice-penetrating radar and gravity instruments.

<http://news.theage.com.au/breaking-news-world/nasa-to-begin-massive-climate-survey-of-antarctica-20091009-gpdj.html>

Google Earth climate change 3D map unveiled

ASHER MOSES

September 28, 2009 - 12:26PM

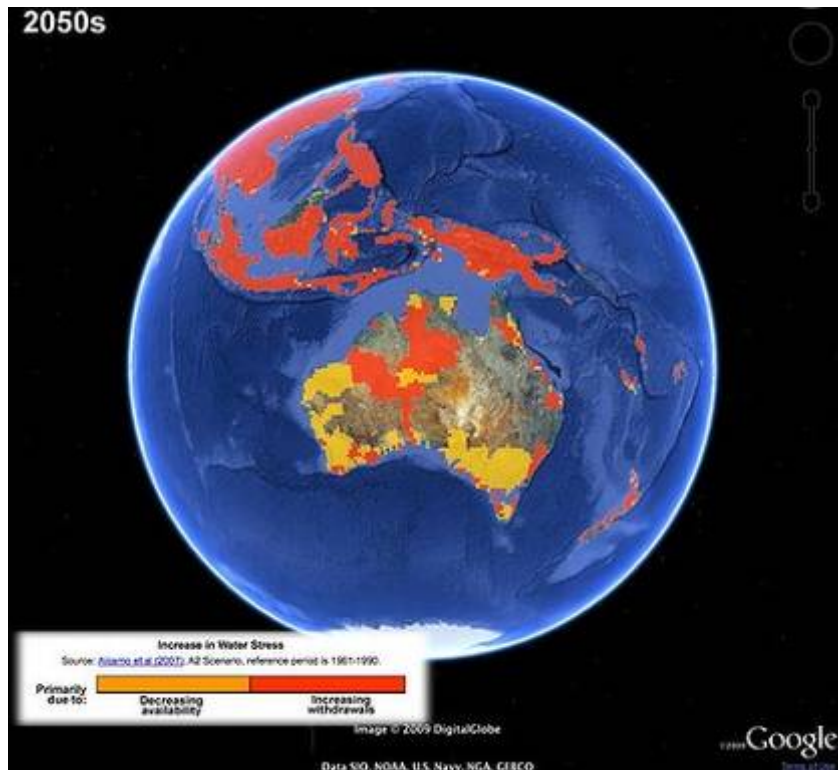
Google Earth climate tour

Google is using its Google Earth mapping tool to simulate on a 3D map of the world the predicted effects of climate change until the year 2100.

Using data provided by the Intergovernmental Panel on Climate Change, the search giant created [new layers for Google Earth](#) showing the range of expected temperature and precipitation changes under different global emissions scenarios that could occur throughout the century.

The new tools were introduced in partnership with the Danish Government ahead of the United Nations Climate Change Convention in December.





(Go to link)

<http://www.google.com/landing/cop15/#intro>

China completes 3D moon map: state media

September 29, 2009 - 4:49PM

The Age

© 2009 AFP

China has completed a high-resolution, three-dimensional map of the entire surface of the moon, state media says.

The map was made using image data obtained by a camera on China's first lunar probe - the Chang'e 1 - launched in October 2007, the official Xinhua news agency said late on Monday.

Quoting Liu Xianlin, an academic at the Chinese Academy of Surveying and Mapping, the report said the map would help scientists study the features of the moon's surface and deepen understanding of lunar geology and its evolution.

(Go to link)

<http://news.theage.com.au/breaking-news-world/china-completes-3d-moon-map-state-media-20090929-gato.html>

Cartographic Resources

Relief shading

www.reliefshading.com

International Society for Photogrammetry and Remote Sensing

Highlights No.9 October 2009 Issue ISSN0717-2931

<http://www.isprshighlights.org/download/isprshighlights-oct09.pdf>

Google Scholar

Go to Google Scholar (from Google search engine > more) and search CARTOGRAPHY 2009 for a list of textbooks and key article on cartography.

http://scholar.google.com.au/scholar?hl=en&q=cartography+2009&btnG=Search&as_ylo=&as_vis=0

Books on Cartography

Geographic Information And Cartography For Risk And Crises Management: Towards Better Solutions

Author: Milan Konecny, Sisi Zlatanova, Temenoujka L. Bandrova

ISBN:

3642034411

ISBN-13:

9783642034411

Binding: Hardcover

Publishing Date: Feb 2010

Publisher: Springer

Number of Pages: 400

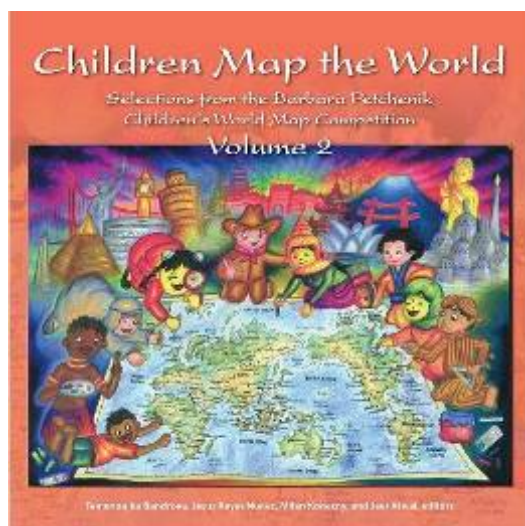
Language: English

Cartography and geographic information (GI) are remarkably appropriate for early warning (EW) and crises management (CM) needs. Use of geospatial technology has tremendously increased in the last several years. ICT has changed from just using maps created in advance to new approaches allowing individuals (decision-makers) to use cartography interactively, on the basis of individual user's requirement. The new generation of cartographic visualizations based on standardisation, formal modelling, use of sensors, semantics and ontology, allows for better adaptation of information to the needs of the users. To design a new culture in pre-disaster and disaster management it is also needed to consider safety/security/privacy aspects of institutions and citizens. All this can be achieved only by demonstrating new research achievements, sharing best practices (e.g. in the health area) and working towards wider society acceptance of geospatial technology (e.g. with the help education and media). This book will outline research frontiers and applications of cartography and GI in EW and CM and document their roles and potentials in wider processes going on in information/knowledge-based societies.

<http://www.flipkart.com/geographic-information-cartography-risk-crises/3642034411-4dz3fp1vhb>

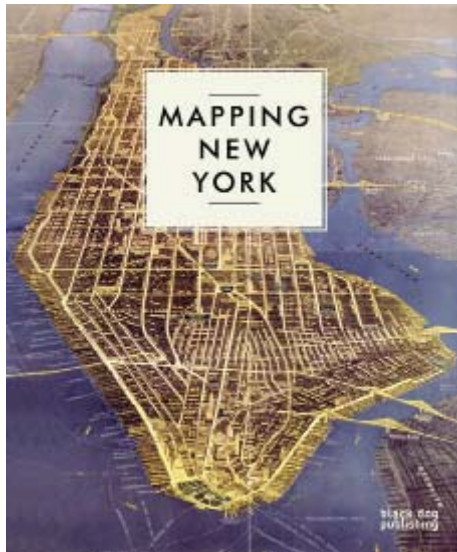
Children Map the World: Selections from the Barbara Petchenik Children's World Map Competition (Paperback)

by [Temenoujka Bandrova](#) (Author), [Jesus Reyes Nunez](#) (Author), [Milan Konecny](#) (Author)



<http://www.amazon.co.uk/Children-Map-World-Selections-Competition/dp/1589482468>

MAPPING NEW YORK



Contributors: Seth Robbins
and Robert Neuwirth

October 2009

“Mapping New York is a fascinating and richly illustrated survey of the urban and social history of New York City. From early woodblock engravings to the latest satellite images available of Manhattan, these maps show the intricate story of the development of one of the world’s most populous cities.”

Hardback

272 pages

216 b/w and color ills

11.5 x 9.5 in

ISBN13: 978 1 906155 82 7

UK £29.95

Also available: Mapping London: Making Sense of the City <http://blackdogonline.com/all-books/mapping-london.html>

Mapping England <http://blackdogonline.com/all-books/mapping-england.html>

(Go to link)

www.blackdogonline.com

DVDs on Maps & Mapmaking

The Map of the Great Explorers (Part I: Columbus, Vespucci, Magellan)



2009

Distributed by [Landmark Media, Inc.](http://www.landmarkmedia.com), 3450 Slade Run Drive, Falls Church, VA 22042; 1-800-342-4336 Produced by Jean Luc Millan, Grand Angle Distribution; Director n/a DVD, color, 25 min.; Jr. High – Adult; European Studies, History, Geography, Storytelling

Reviewed by Brad Eden, Associate University Librarian for Technical Services and Scholarly Communication, University of California, Santa Barbara

Date Entered: 9/18/2009

This is Part 1 of a two-part series on the explorers of the New World. The three explorers Columbus, Vespucci, and Magellan and their voyages are not only accounted for here, but also their contributions to mapmaking and geography and how their voyages helped to expand and change the world view of their own time and subsequent time periods. This volume provides a short history of maps in the Middle Ages, Portugal and the spice trade, each of the above-mentioned explorers, and a quick discussion of Patagonia and the crossing of the Pacific. An interesting, if rather short presentation of three major historical explorers and their influence on mapmaking and geography.

Mapping environmental disasters bushfires and threatened species.

by Garner, Simon.; Doolan, Kieran.; Hancox, Glen.; Learning Essentials (Firm)

When natural disasters like fire strike the Australian landscape, maps are used to help us immediately deal with the problem, determine the impact on people and the environment and plan for another such event. This program explores the important role different types of maps play in managing the impact of fire, how technology complements the use of paper maps and what maps can do to help people protect threatened species. ANBD:000026344316

<http://l102.nla.gov.au/resource/5664d536-0d30-4f25-91a2-38b8f640c2b4>

Special Feature - Cartography in the movies

VIDEO > MacGyver – How to Use a Map

According to MacGyver, a map "can get you in and out of places a lot of different ways" other than just getting yourself from point A to point B. As this video clearly shows, a map can help you unlock doors, distract women in burkas and beat an armed guard senseless: (7.12 minute You Tube video)

<http://www.youtube.com/watch?v=mOY4BnsddKE>

MOVIE > The Englishman Who Went Up A Hill But Came Down A Mountain –



Movie Review

10 June 2009 6:49 PM, PDT |

There are some stories that seem incredibly simple, if you boil them down as far as they go, which are actually very complicated. We enter that story as cartographers, on their rounds measuring the heights of mountains (and hills), come to the sleepy village that lies in the shadow of Ffynnon Garw, in the south of Wales. Trouble rears its head pretty quickly, as these cartographers mention some doubt that Ffynnon Garw is more than a thousand feet, the height required to be deemed a mountain. »

- Marc Eastman

(One of my favourite movies available for rental on DVD – David Fraser)

<http://www.imdb.com/title/tt0112966/>

Google Earth – Worst case scenario

What some people fear is happening already

(Go to link)

<http://www.youtube.com/watch?v=fPgV6-qnQaE>

4D Globe – YouTube Video

A 4D Globe – it's very interesting for what you can do with it.

(Go to link)

http://www.youtube.com/watch?v=hN_oLwe75C0&feature=fvw

(Contribution from Dean Sayers)

Cartography book review (Humour)

Silly Inventions with Brian Forbes Cartography Book (**PART 1**)

(Go to link)

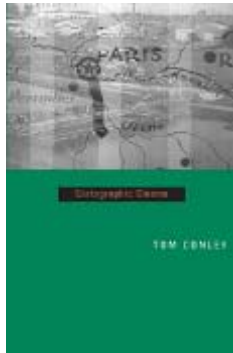
<http://vodpod.com/watch/1260283-invention-with-brian-forbes-comedy-series-astounding-book-author>

Silly Inventions with Brian Forbes Cartography Book (**PART 2**) – Parental guidance recommended

(Go to link)

<http://vodpod.com/watch/2105528-silly-inventions-with-brian-forbes-cartography-book-author-r>

BOOK > Cartographic Cinema



Tom Conley

University of Minnesota Press

\$26.50 Paper

ISBN: 0-8166-4357-1

ISBN-13: 978-0-8166-4357-8

Cartographic Cinema examines the affinities of maps and movies through comparative theory and close analysis of films from the silent era to the French New Wave to Hollywood blockbusters. In doing so, Conley reveals that most of the movies we see contain maps of various kinds and almost invariably constitute a projective apparatus similar to cartography. In addition, he demonstrates that spatial signs in film foster a critical relation with the prevailing narrative and mimetic registers of cinema.

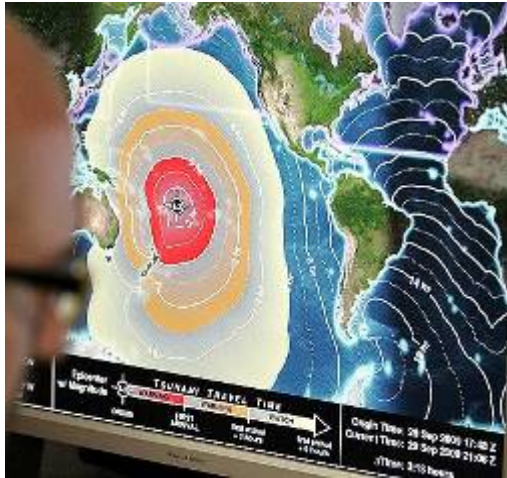
Conley convincingly argues that the very act of watching films, and cinema itself, is actually a form of cartography. Unlike its function in an atlas, a map in a movie often causes the spectator to entertain broader questions—not only about cinema but also of the nature of space and being.

http://www.upress.umn.edu/Books/C/conley_cartographic.html

The Value of Cartography

Pacific tsunami alert

September 30, 2009 - 12:59PM
The Brisbane Times



Christopher Moore (foreground) of the National Oceanic and Atmospheric Administration looks at computer graphs at the Pacific Tsunami Warning Center in Ewa Beach, Hawaii. *Photo: Hugh Gentry*
<http://www.brisbanetimes.com.au/world/villagers-die-as-massive-quake-triggers-pacific-tsunami-alert-20090930-gbcr.html?autostart=1>

Historical Maps

Madaba's Jerusalem Mosaic Map



This 6th century mosaic map of Jerusalem was found under the floor of Madaba's St George's Church. The mosaic was probably made during the reign of the Emperor Justinian (AD 527-65) and hold significant historical value.

<http://www.flickr.com/photos/cybjorg/134315684/>

Trinitarian map



Clover-shaped map of the world, with Jerusalem at the centre of the world, according to medieval theoretical geography.

<http://www.flickr.com/photos/69814458@N00/120818928/>

Imperial Federation, map of the world showing the extent of the British Empire in 1886



Everything about the design of this elaborately decorated world map glorifies the late-19th-century British Empire. Cartographically it used a Mercator projection centered on the Greenwich Prime Meridian, placing Great Britain just above the map's central focal point. The Greenwich Prime Meridian (near London) was adopted as the international standard in October 1884. The British Isles, as well as all of the British colonies spreading out to the east and the west, were highlighted with red, while other geographical areas were left blank with only a minimum number of place names. In addition, an inset box was placed near each of the major colonies, listing statistics about geographical area, population, and trade. The words "Freedom, Fraternity, Federation," suggesting a peaceful co-existence within the British Empire, were prominently placed along the map's top margin, but the remainder of the map's illustrations imply "colonialism." At the bottom center Britannia is seated on top of the world ruling over her subjects, represented by a variety of animals and costumed figures. India, quickly identified by an elephant and a tiger, appears in the lower left corner, while Australia, including a kangaroo and a sheep, is shown in the lower right. Using the Mercator projection in constructing this thematic map may have not been the most appropriate choice because it greatly exaggerates the size of Canada. However, since this projection is best used for navigational purposes, it was a reasonable choice. Considering the British Empire thrived on ocean-going transportation, the use of this projection would have provided a familiar image for the British public.

<http://www.flickr.com/photos/normanbleventhalmapcenter/2710800068/>

David Rumsey Maps 6



Exploring the David Rumsey Maps regions, one of the most fascinating groups of sims in SL. This is an immense, terraformed map of Yosemite.

<http://www.flickr.com/photos/zikiquesti/3260104133/>

Map Product Comparison



A comparison between Virtual Earth, Google Maps, Google Earth and NASA World Wind.

<http://www.flickr.com/photos/strangnet/28182773/>

Reflection

Security is a good map.



<http://www.flickr.com/photos/alastairhumphreys/1453048765/>