

International Cartographic Association
Association Cartographique Internationale

Commission on Education and Training

SEPTEMBER 2009



An occasional electronic newsletter for members of the Commission.

If you have any brief items of interest to fellow CET members then please email them to david.fraser@rmit.edu.au. for eCET. If you have more substantial articles please send them to Igor Drecki at i.drecki@auckland.ac.nz for the ICA newsletter.

-----000000-----

"More than 99.9 percent of all the maps that have ever existed have been made in the last 100 years"
(Denis Wood, *Cartographer*, 2007)

Conferences Update

Proposed ICA Symposium on Cartography for Australasia and Oceania / GeoCart'2010

1-4 September 2010 (Wed-Thu-Fri-Sat)
University of Auckland, Auckland, NZ
(Pencil this in your diary – more details later)

The Future of Maps and the Internet

Friday, November 13, to Sunday November 15th, 2009
Vina Del Mar, Valparaiso, Chile
An event sponsored by the Maps and the Internet Commission.
<http://valparaiso2009.eventbrite.com/>

3rd International Conference on cartography and GIS

15-20 June 2010
Nessebar, Black Sea, BULGARIA
www.cartography-gis.com

Gi4DM 2010 Conference

Geomatics for Crisis Management
February 2-4, 2010
Centro Congressi Torino Incontra
Torino, Italy
<http://www.gi4dm-2010.org/>

Pacific Islands GIS&RS User Conference 2009

1-4 December, 2009
Suva, Fiji,
<http://www.picisoc.org/PacGISRS2009>

ISPRS Commission V Mid-Term Symposium

Close Range Image Measurement Techniques
22nd to 24th June 2010
Newcastle upon Tyne, UK

Abstracts by 21st December 2009

<http://www.isprs-newcastle2010.org>

DGI EUROPE 2010

Geospatially Enabling Defence & National Security Across The World

January 25 - 28, 2010

QEII Conference Centre in Westminster, London

www.dgieurope.com

International Cartographic Association

Production of Digital Cartography as a Support to the National Census - A Geostatistical Strategy to Build the Colombian Spatial Data Infrastructure

Lilia-Patricia Arias

Census 2005-Cartographic production Coordinator

Agustin Codazzi Geographic Institute

liliaparias@igac.gov.co

Since the first efforts to build the Colombian Spatial Data Infrastructure -SDI-, several institutions have been concerned about improving spatial information management. As an essential principle to provide access to official information, the National Government has promoted coordinated initiatives focused on reducing barriers to share data and building the political framework that ensures geographic information availability to support decision making and sustainable development.

<http://www.cartesia.org/geodoc/icc2005/pdf/oral/TEMA6/Session%206/LILIA-PATRICIA%20ARIAS.pdf>

Books on Cartography

THE MAP AS ART: CONTEMPORARY ARTISTS EXPLORE CARTOGRAPHY

Katharine Harmon,

Princeton Architectural Press, \$55

Reviewer Andrew Stephens

September 4, 2009

It's little wonder that artists have for so long been drawn to cartography for research, inspiration and imagery. Mapping, after all, is at the heart of their business: trying to make sense of the world - materially, aesthetically, philosophically - and to present findings visually. It is a search for meaning by marking and naming life's terrain.

Introducing this comprehensive and intricate book, Katharine Harmon observes an exponential increase in the number of artists working with maps in recent decades. While intended to be utilitarian, maps also offer "implicit promises of routes into and out of the unknown". This spirit has led graphic wanderers into its territory - to explore, imagine and even get lost.

<http://www.theage.com.au/news/entertainment/arts/artists-mapping-out-their-inner-and-outer-terrains/2009/09/03/1251570796979.html>

Cartography in the Media

The Big Draw of a GPS Run



Michael Nagle for The New York Times

Part sport, part art, GPS drawing lets runners, walkers, cyclists and hikers imagine themselves anew, mapping their track lines across cities, roads and farms, and sharing them online. Above, a GPS drawing by a runner.

By MALIA WOLLAN

Published: August 19, 2009

THREE years after moving to Brooklyn from Poland, Tomasz Berezinski awoke after a night of inebriety with a headache and decided his life must change. He started running, bought a GPS device and turned his body into a brush and the city into his canvas. ([go to link](#))

http://www.nytimes.com/2009/08/20/fashion/20GPS.html?_r=1&scp=3&sq=mapping&st=cse

Open Minds: Follow the double-click road

From The Sunday Times

Jerry Brotton

July 26, 2009

You really needed a map if, like me, you were living in East Berlin in the early 1990s. An East Berliner told me once how he got hold of a map of West Berlin, and would spend hours poring over the districts and streets of the other half of a city that he doubted he would ever see with his own eyes. All that changed in November 1989 as he scrambled over the Wall and walked the streets, familiar from years of consulting his grubby old map. Not only could he move round his new city with the greatest of ease, but he even directed lost West Berliners to their destinations without even a hint that he was an "Ossi".

His story has stayed with me ever since, and I've spent the past two decades obsessed by the strange ubiquity of maps. ([go to link](#))

<http://www.timesonline.co.uk/tol/travel/online/article6725510.ece>

Bold Soil-Mapping Venture Seen as Crucial to Efforts on Climate, Agriculture

By PAUL VOOSSEN of [Greenwire](#)

Published: August 7, 2009

Long left in the dust by their peers in climate research, a small group of soil scientists is spearheading an effort to apply rigorous computer analysis to the ground beneath our feet. Their goal: to produce a digital soil map of the entire world.

It is a daunting task. In many parts of the world, such as Africa and South Asia, knowledge of soil is sketchy at best, relying on fading paper maps. . ([go to link](#))

<http://www.nytimes.com/gwire/2009/08/07/07greenwire-bold-soil-mapping-venture-seen-as-crucial-to-e-74103.html?scp=1&sq=mapping&st=cse>

Searching for cached treasure

DAVID ADAMS

August 20, 2009

The Age

Peter Taurins and his daughters Jessica, 17, and Gabrielle, 9, regularly look for caches at weekends.

Photo: Rodger Cummins



We're standing on a small patch of parkland and somewhere near us lies a small container, hidden away from prying eyes but housing our "treasure" — a small sheet of paper on which we can note that we found it.

But where? Could it be stuck to the base of a light pole? Hidden among the bushes?

Or camouflaged to look like something else?

Peter Taurins, an experienced "geocacher" with almost 1900 "finds" to his geocaching moniker — "caughtatwork" — is confident it can be found.

He's been geocaching — using a hand-held GPS receiver to locate map co-ordinates in order to find secreted caches containing logbooks to record his discovery — as a hobby since 2004 and this year aims to find 365 caches. ([go to link](#))

<http://www.theage.com.au/digital-life/computers/searching-for-cached-treasure-20090819-ep9x.html>

Mapping out our every move

September 12, 2009

The Age

Online tracking is under artistic scrutiny, writes Suzy Freeman-Greene.

THEY speak of abundance, these markers on a map. Sour Plum (over back lane). Cumquat (very big; yummy fruit). Passionfruit vine (hangs outside fence). Feijoa Tree (really good fruit; occupants don't seem to pick it).

On Fitzroy's Feral Fruit Map, a collaboration using Google maps, urban gleaners share news of falling produce. It hasn't been updated since December but I'm hoping for a bumper crop of postings this summer. Imagine if such maps were made across Melbourne. We could have fruit picking walks and jam-making jamborees. No one need go hungry.

Once, maps were chiefly about property and power. Colonial explorers mapped lands they sought to claim. Coloured pins measured the march of armies across paper. Today, new technologies have thrust sophisticated maps and cartography tools into almost anyone's hands.

<http://www.theage.com.au/news/entertainment/arts/mapping-out-our-every-move/2009/09/11/1252519629969.html>

Frankfurt 09: Internet access on the move

Toby Hagon, *drive.com.au*, September 16, 2009

Wireless internet access has made it to the car, promising uninterrupted coverage while in traffic jams. By Toby Hagon



Mercedes-Benz is introducing wi-fi access for its cars.

You can log online at home, at work or even at your local café or McDonald's. But soon you'll be able to access your emails or the world wide web from a traffic jam or while cruising down the freeway thanks to the world's first in-car wi-fi. From next month Mercedes-Benz will offer wireless internet access in its cars through its new InCar Hotspot.

<http://www.drive.com.au/Editorial/ArticleDetail.aspx?ArticleID=65640&vf=12>

Waze turning road warriors into map builders

September 26, 2009

The Age

Technology startup Waze is tapping into the collective knowledge of road warriors in order to make life more pleasant for drivers while creating reliable street maps.

A free Waze: Way to Go service that proved its worth in Israel is making its US debut, inviting motorists to use smart phones to keep one another in the know about speed traps, short cuts, hazards, accidents and more.

"It seems like a silly thing, but it is addictive," Waze chief executive Noam Bardin said while demonstrating the service for AFP.

"There is this feeling that you are not alone... Some people just like knowing someone else is out there."

Satellite tracking technology commonly built into smart phones lets Waze automatically measure traffic flow while simultaneously verifying or modifying public street information in its database. Motorists "teach" Waze computers where roads are and how best to maneuver about simply by driving.

Drivers can upload comments, along with pictures, from along their routes to alert fellow "wazers" to anything from accidents or detours to a favorite place to grab a cup of coffee. Waze also provides users with turn-by-turn directions.

While Waze's acts as a handy, free navigation tool for drivers it is, at its core, a "wiki" style approach to map making: Waze users are essentially feeding updated street information to the service every time they drive.

The crowd-sourcing approach is expected to produce up-to-date street maps that will compete with offerings from leading mapping data firms Navteq and Tele Atlas.

Navteq and Tele Atlas dispatch fleets of specially equipped trucks to gather data they in turn sell to firms that provide Internet mapping and in-car navigation services.

"We plan to come out with cheaper, better maps built from scratch," Bardin said.

"We are very much about folks driving their daily commutes or local routes. You might know a better way to get someplace; fine, drive it and you've taught us."

Waze features include outlining routes considered fastest, shortest, popular, or most environmentally friendly.

"We've found that people have started using our application to build maps all over the world," Bardin said. "By year's end, we plan to open up internationally."

The project was named "Freemap" when it was launched in Israel in 2006 and data collection for a "live" map of that country is almost complete.

Waze plans to make money by eventually charging for map data and premium navigation services.

© 2009 [AFP](#)

<http://news.theage.com.au/breaking-news-technology/waze-turning-road-warriors-into-map-builders-20090926-g6jk.html>

Cartographic Resources

GEOInformatics September 2009

Magazine for Surveying, Mapping & GIS Professionals

<http://fluidbook.microdesign.nl/geoinformatics/06-2009/#0>

ArcGIS Explorer

ESRI has a new ArcGIS Explorer program. It's similar to Google Earth (in some respects) however you can add in your own GIS data from ArcGIS or ArcMAP. Along with this they have introduced ArcGIS Online where you can download free data sets and input them into ArcGIS Explorer.

The best thing about this program is that it is totally **free!**

Below is the link to the official site which has an overview, demos and key features if you are interested.

<http://www.esri.com/software/arcgis/explorer/index.html>

Information was sourced through the blog site:

http://mapperz.blogspot.com/2009_08_01_archive.html

A simple YouTube search of 'ArcGIS Explorer' turns up several interesting videos relating to the program

http://www.youtube.com/results?search_query=arcgis+explorer&search_type=&aq=f

(Information provided by Dean Sayers)

National Geographic

Mapmachine

NG Maps Print Collection

A Visual Guide to Trends

<http://maps.nationalgeographic.com/maps>

University of Texas- Perry-Castañeda LibraryMap Collection

At this internet site you will find:

Online Maps of Current Interest

Online Maps of General Interest

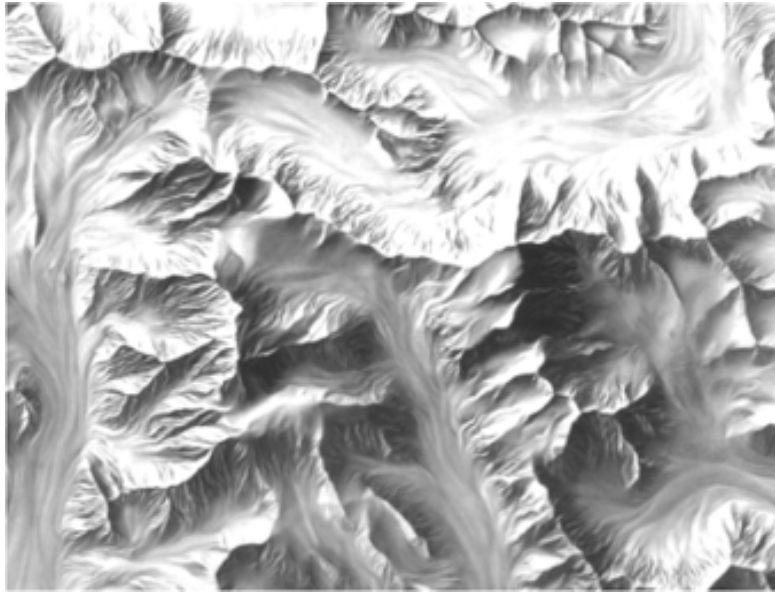
Cartographic Reference Resources

- Distance Calculators
- Gazetteers
- Glossaries and Guides
- Latitude and Longitude
- Map Projections
- Map Scale
- Sun and Moon Rise/Set Calculators
- Tides
- Time Zones

<http://www.lib.utexas.edu/maps/>

Relief Representation

Tibor G. Tóth – born (1937) and raised in Hungary – has more than forty years of pencil, airbrush, acrylic, and digital relief experience. He is the owner of "[Tóth Graphix](#)" cartographic art studio. After an eighteen-month cartographic training program in Budapest, starting in 1957 he worked at [Freitag-Berndt und Artaria](#), [American Geographical Society](#), and the [National Geographic Society](#).



For more relief see the following [Cartographers](#)

[Hans Conrad Gyger](#)

[Rudolf Leuzinger](#)

[Xaver Imfeld](#)

[Hermann Kümmerly](#)

[Fridolin Becker](#)

[Eduard Imhof](#)

[Fritz Hölzel](#)

[H.C. Berann](#)

[Hal Shelton](#)

[Heinz Leuzinger](#)

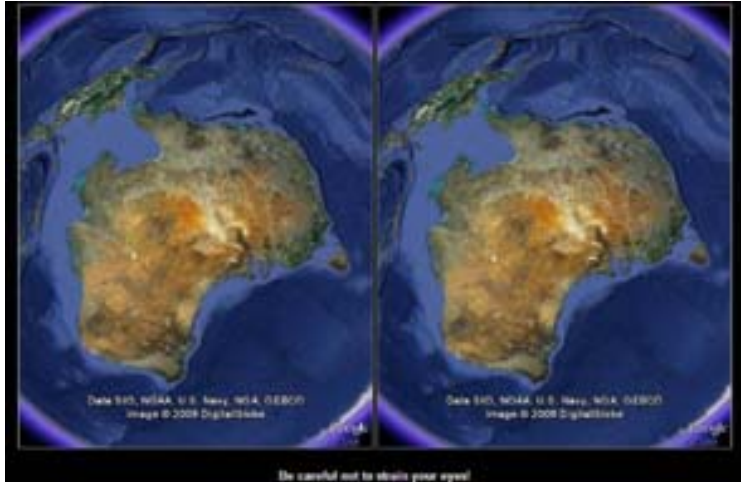
[Tibor Tóth](#)

[Tom Patterson](#)

http://images.google.com.au/imgres?imgurl=http://www.reliefshading.com/cartographers/pictures/toth.jpg&imgrefurl=http://www.reliefshading.com/cartographers/toth.html&usq=__RZ0y7IPMI_MDqnGF1RIWfn3GLZE=&h=185&w=132&sz=8&hl=en&start=39&um=1&tbid=NGFTBznqG-1EYM:&tbnh=102&tbnw=73&prev=/images%3Fq%3Dcartographic%2Bart%26ndsp%3D21%26hl%3Den%26client%3Dfirefox-a%26rls%3Dorg.mozilla.en-GB:official%26sa%3DN%26start%3D21%26um%3D1

Stereoscopic 3D Using Google Earth Images

Go to the website, cross your eyes and view the earth in stereoscopic 3D!



<http://earth-api-samples.googlecode.com/svn/trunk/demos/stereo/stereo.html>

Archaeological Ruins

Stereo photogrammetry is being used to teach archaeology students about reconstructing the past in Iran.



Camouflage class model

A “camouflage class” at New York University, where men and women are preparing for jobs in the Army or in industry by making models from aerial photographs and working out camouflage schemes, 1943.



Photo by Marjory Collins.

<http://www.pdnphotooftheday.com/2009/03/628>

Moscow city for sale, price: \$3M

This is a Moscow city scale model. It is back from USSR times, when Soviet leaders had a little craze on making such epic compositions. It was ordered from an artist Efim Deshalyt in 1976. The size of the model exceeds 400 sq ft.



<http://englishrussia.com/?p=245>

Biggest Little Cities: Models for Urban Planning

By Terrence Russell
02.23.09

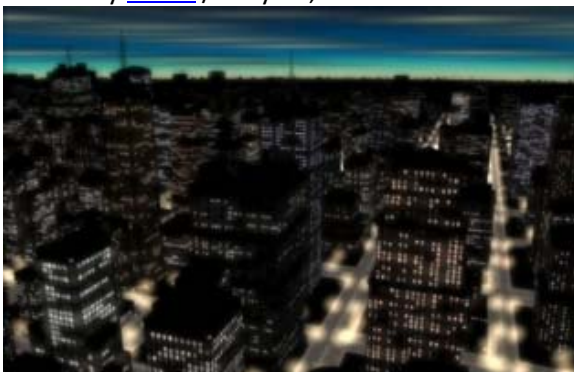
[Michael Chesko](#) is no architect. He's not a structural engineer or an urban planner either. But he just spent more than 2,000 hours constructing this highly detailed, nearly perfect scale model of midtown Manhattan. Chesko cut, sanded, and glued the mini metropolis—now on exhibit at the [New York Skyscraper Museum](#)—using only an X-Acto knife, a nail file, and a Dremel (and lots of balsa wood). But the 50-year-old software engineer was having fun; he's been building little cities since he was a kid.



http://www.wired.com/culture/design/magazine/17-03/pl_design

Pixel City: Computer-generated City

Posted by [Nathan](#) / May 14, 2009



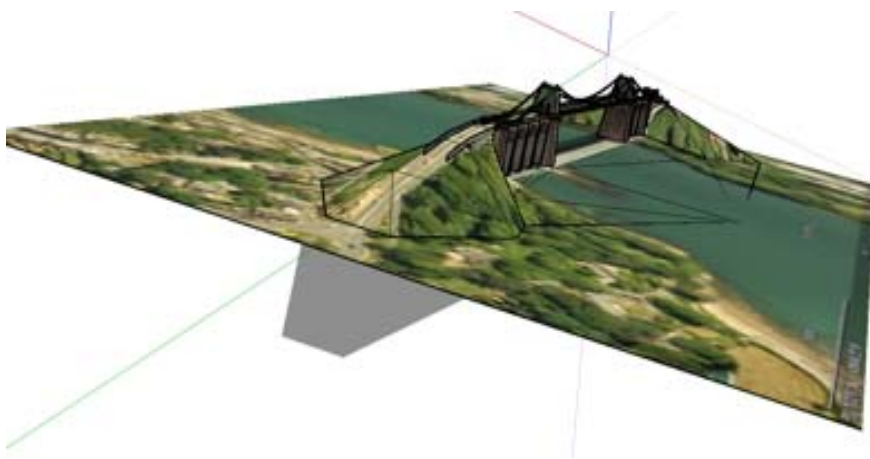
[Pixel City](#) is a procedurally-generated city by Shamus Young. For the non-coders out there, this essentially means that based on a certain set of rules, this 3-D city is generated dynamically each time the program runs. Here, the video that shows the Young's process will make it more clear: ([Go to link](#))

<http://flowingdata.com/2009/05/14/pixel-city-computer-generated-city/>

Google SketchUp 3D Terrain Models

You can create your own 3D terrain model using Google SketchUp. This free downloadable software is available from <http://sketchup.google.com/>

View existing models in the 3D warehouse



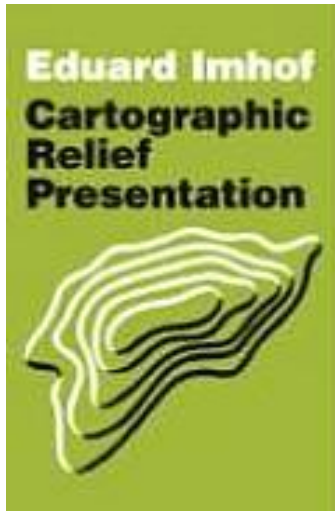
Menai Bridge image created in Google SketchUp by Damo

Wave Rock Arizona

http://www.cracked.com/article_17256_17-more-images-you-wont-believe-arent-photoshopped.html



Reference Books



The SHAPE of SPACE

Second Edition

Jeffrey R. Weeks
*Freelance Mathematician
Canton, New York*



MARCEL DEKKER, INC.

NEW YORK - BASEL

The Lighter Side of Cartographic Relief



shewalkssoftly.com/tag/furniture/

DIY Cartography

[Making Maps: DIY Cartography](#)

Resources and Ideas for Making Maps

Making Flat Earth Globes

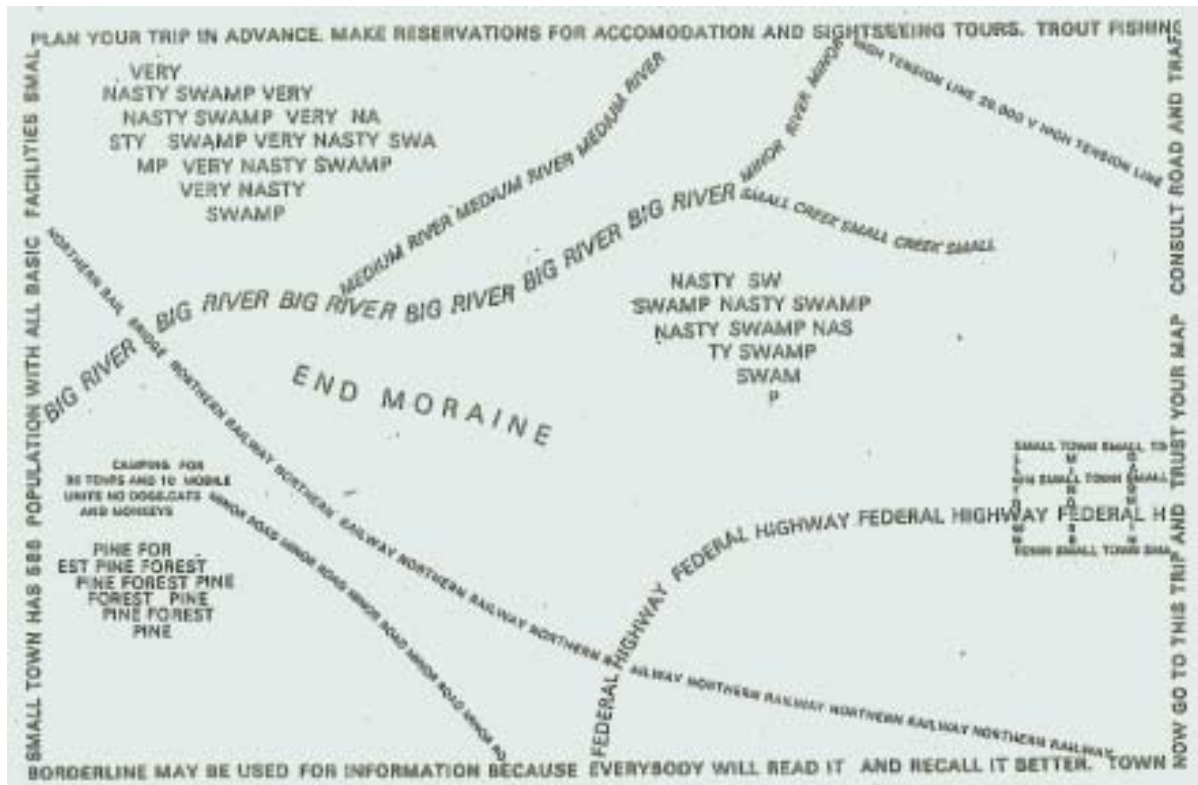
September 19, 2007 by [John Krygier](#)



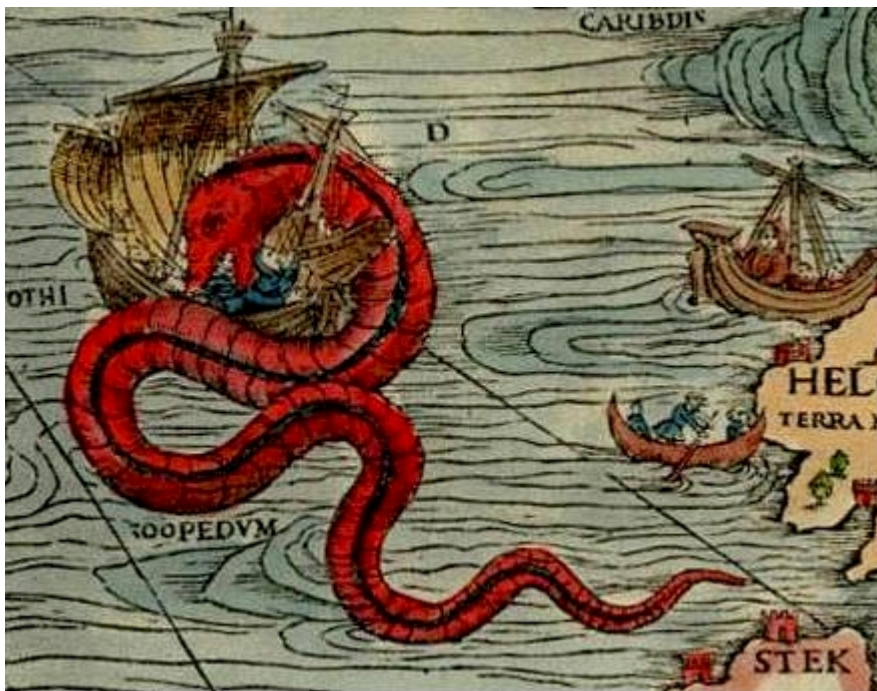
<http://makingmaps.net/2007/09/19/making-flat-earth-globes/>

Special Maps

Below is a map I have used each year for many years to stimulate creativity in my cartography students. The map was designed by John Balodis who is still as passionate about cartography as he was when he created this intellectually stimulating gem.



A Humorous Look at Nautical Charts



<http://espliego.files.wordpress.com/2008/11/red-sea-monster-serpent.jpg>

"I should say we'd reach England by Tuesday or thereabouts, with a decent wind behind us. It would be a lot quicker than that if we could just sail straight there, but I was looking at the nautical charts, and it's a good job I did, because it turns out there's a dirty great sea-serpent right in the middle of the ocean! It has a horrible gaping maw and one of those scaly tails that looks like it could snap a boat clean in two. So I thought it best to sail around that." FritzRoy frowned. 'I think they just draw those on maps to add a bit of decoration. It doesn't actually mean there's a sea-serpent there.' The galley went rather quiet. A few of the pirate crew stared intently out of the portholes, embarrassed at their Captain's mistake. But to everyone's relief, instead of running somebody through, the Pirate Captain just narrowed his eyes thoughtfully. *'That explains a lot,'* he said. *'I suppose it's also why we've never glimpsed that giant compass in the corner of the Atlantic. I have to say, I'm a little disappointed.'*

(Defoe 2004, p. 44-45).

<http://www.accessmylibrary.com/article-1G1-175065668/humorous-maps-explorations-alternative.html>

The famous Carta Marina showing a host of sea serpents attacking sailing ships and each other can be found at

http://images.google.com/imgres?imgurl=http://espliego.files.wordpress.com/2008/11/two-ships-and-monsters1.jpg&imgrefurl=http://espliego.wordpress.com/2008/01/08/old-sea-map-with-monsters/&usq=__PfTGDcTp1wXldFqLmSfFew4_R8=&h=311&w=476&sz=37&hl=en&start=83&um=1&tbnid=ztwAEZq2T7Aa yM:&tbnh=84&tbnw=129&prev=/images%3Fq%3Dsea%2Bserpents%2Bnautical%2Bcharts%26ndsp%3D21%26hl%3Den%26rls%3Dcom.microsoft.en-au:IE-SearchBox%26rlz%3D117GGLD%26sa%3DN%26start%3D63%26um%3D1

For those who like a mathematical challenge

Your puzzle:

Edward Eyre Junior is lost on the Nullarbor Plain. He hears a train whistle. Ed cannot see the train or the railway line, but he knows the direction from which the whistle came. His only chance of surviving is to run to a point on the line before the train gets to that point. In which direction should he run? (When you have your solution go to the link)

<http://www.education.theage.com.au/pagedetail.asp?intpageid=2379&intsectionid=11&colour=#003333>